

840868
Property Submission:
PGM & Red Claims

PGM & RED CLAIMS
YALAKOM RIVER AREA
SOUTH WESTERN BRITISH COLUMBIA

920/2
a.c.

ARC RESOURCE GROUP
SUITE 107 - 325 HOWE STREET
VANCOUVER, B.C.
V6C 1Z7
(604) 685-9700

JR - Home phone 737 7549
will be in Gold Bridge Sun night?
tour with Westmin Tues.
available for tour with SGM on Mon.

YALAKOM - RED & PGM CLAIMS

PROPERTY SUMMARY

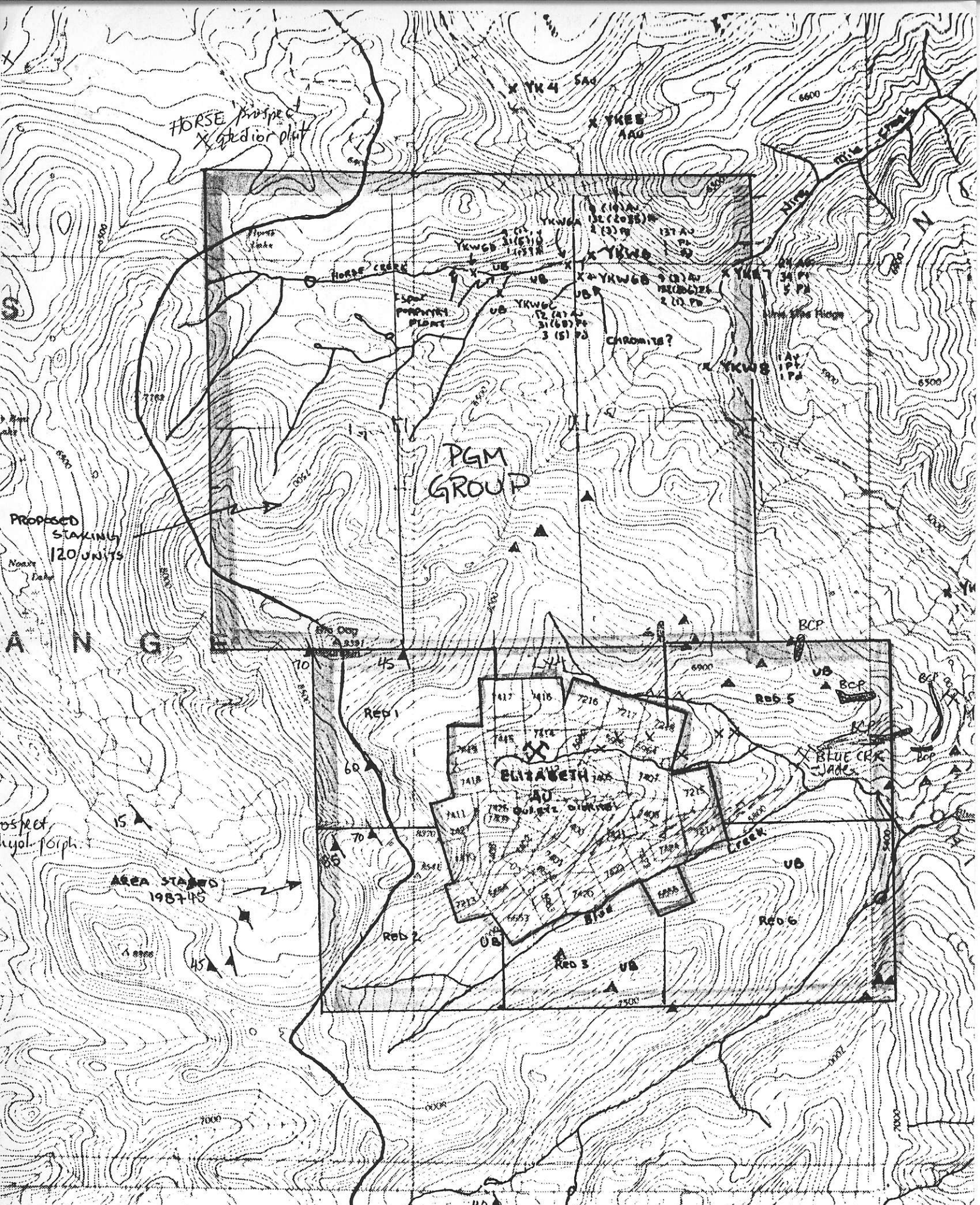
- These claims are well situated in a geologically favourable environment for the discovery of new mineral deposits.
- The nearby Bridge River Mining Camp approximately 50km to the southwest, has historically been the largest and richest lode gold mining camp in B.C.
- The Shulaps ultrabasic complex underlies the claims, represents an excellent exploration target for platinum and gold mineralization.
- 1987 reconnaissance (heavy mineral) sampling program for gold and platinum group minerals found anomalies up to 2035 ppb platinum and up to 1,000 ppb gold.

PGM CLAIMS

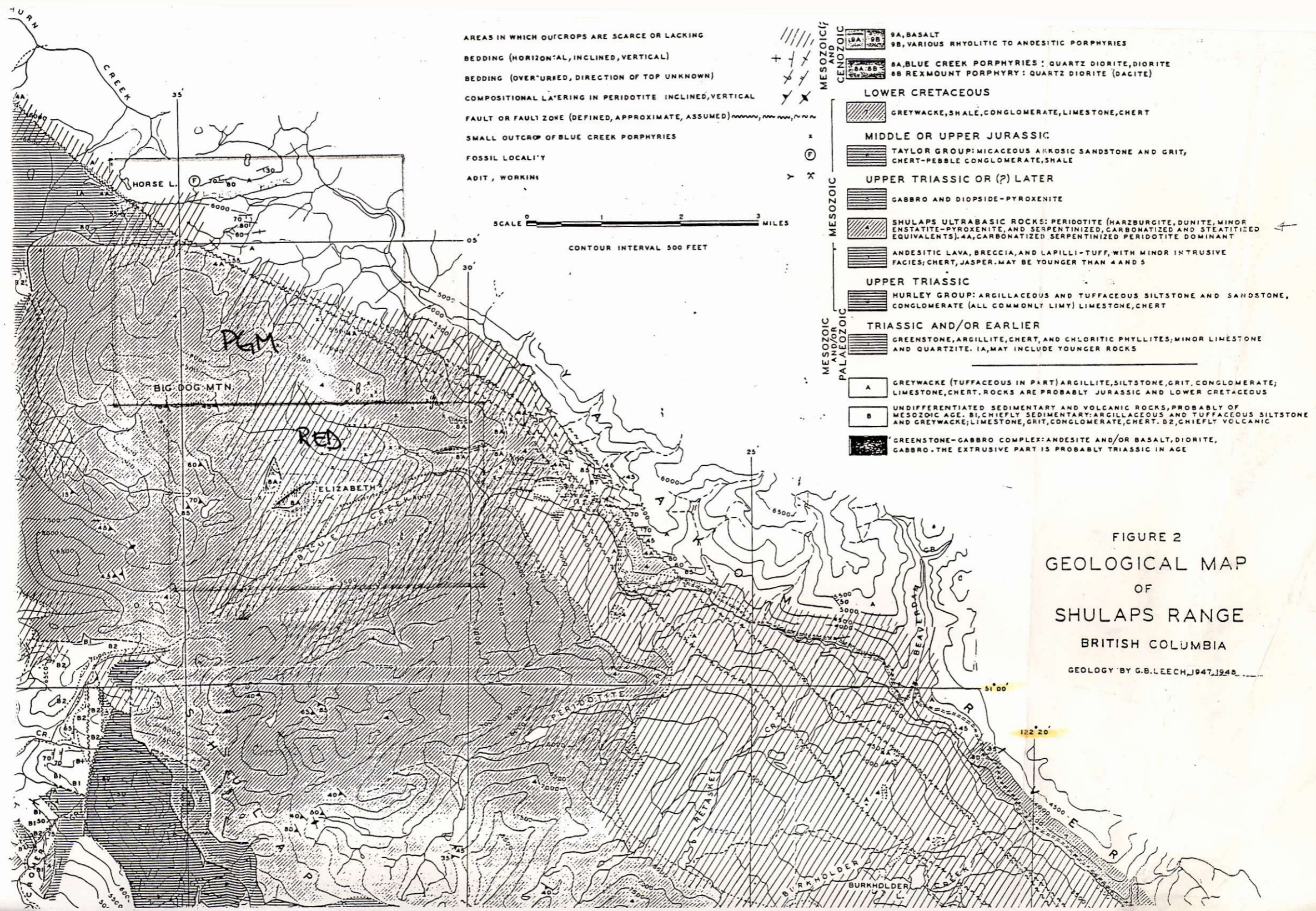
- 120 units
- Heavy mineral sampling located several platinum and gold anomalies on Horse Creek, indicating a strong potential for discovery.
- Possibilities for Au mineralization similar to Elizabeth showing (just South).

RED CLAIMS

- 80 units
- High grade gold veins are found in quartz-diorite plugs intruding the Shulaps ultramafics (Elizabeth showing).
- Minor development in 1958 resulted in mining of 9 tons of ore yielding 5 oz. gold, 52 lbs. lead and 17 lbs. zinc.
- Claims surround the Elizabeth showing and represent good exploration targets for both platinum and gold mineralization.



YALAKOM CLAIMS



(VALUES IN PPM)	ZN	BA	SN	W	CR	AU-PPB	PT-PPB	PD-PPB	HMZ
	60	2	12	1	43	2			3.74
	52	1	4	1	36	2	1	2	4.40
	88	1	1	1	140	1000	12	1	3.51
	72	2	6	1	44	5			2.95
	49	2	7	1	57	4			4.17
YK-W6	55	1	4	3	934	137	1	1	4.98
YK-W7	45	2	7	1	76	24	34	5	3.38
	27	1	2	4	659	1	1	1	5.86
	44	2	8	3	43	8			3.08
	1338	2	1	7	1037	1	1	2	1.87
	86	2	5	3	246	5			2.94
	94	3	5	1	105	3			1.39
	62	1	3	8	605	12			2.42
	22	2	1	6	596	32	10	1	14.9E
	27	3	3	18	421	31	27	5	7.86
	138	2	1	3	363	3			2.51
	44	1	5	6	711	2	1	1	4.81
	29	1	2	6	461	13	8	1	12.51
	40	1	6	3	30	18			2.21
	66	1	7	2	39	230			2.61
	261	1	1	5	38	10			2.01
	70	3	3	3	185	103	6	16	7.31
	266	1	7	2	32	13			2.21
	207	1	3	3	38	9			2.71
	49	2	3	1	179	3			9.01
	133	3	1	1	328	40	25	18	5.60

RECEIVED
AUG 18 1987

MIN-EN LABORATORIES LTD.

Specialists in Mineral Environments

705 West 15th Street North Vancouver, B.C. Canada V7M 1T2

Phone: (604) 980-5814 OR (604) 988-4524

TELEX: VIA USA 7601067 UC

Certificate of GEOCHEM

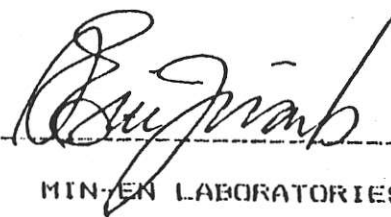
Company: COOKE GEOLOGICAL
Project: CB 87 YK
Attention:

File: 8-122/P1
Date: FEB 11/88
Type: HEAVY METALS

I hereby certify the following results for samples submitted.

Sample Number	HM %	AU-FIRE PPB	PT PPB	PD PPB
KW6A-NDN-MAG	10.46	9	132	2
KW6B-NDN-MAG	11.75	24	132	2
KW6C-NDN-MAG	16.99	12	31	3
	10.40	4	31	1
	3.31	1	22	1
KW6A-MAG	3.36	3	21	5
KW6B-MAG	6.00	19	2035	3
KW6C-MAG	3.03	3	206	1
	5.40	4	68	5
	3.93	1	5	1
	1.27	2	42	8
	1.03	3	65	6

Certified by



MIN-EN LABORATORIES LTD.

JECT NO: CB 87 YK

705 WEST 15TH ST., NORTH VANCOUVER, B.C. V7M 1T2

FILE NO: B-122/P1

ATTENTION:

1604)980-5814 OR 1604)988-4524

* TYPE HEAVY METALS *

DATE: FEB 11, 1988

(VALUES IN PPM)	ZN	GA	SN	W	CR	HM%
YKW 6A-NON-MAG	187	2	1	4	2949	10.46
YKW 6B-NON-MAG	190	2	3	4	2103	11.75
YKW 6C-NON-MAG	187	2	1	4	2778	16.99
	204	2	2	4	2407	10.40
	127	1	7	2	170	3.31
	99	1	7	2	125	3.36