

July 28/76 - cloudy, cool

N.T.S. 82 J 13/E

840791

- small valley beneath
Mt Brusilof & facing
Assiniboine Creek

- At 1st small lake shown
on map in this valley

are thinly bedded black
& dark grey l.s. (~~stromatolite~~
& some argillite

- underlain by light grey
stromatolite l.s. (some red beds)

L- 28/7/76-1 6775'

- bed in strom. l.s. 343°/28°E

Easterly side falls ~ 6600

are light grey, pinkish grey
weathering massive dol. with
some open vugs

- lower but not by much are
med. grey, bluish-grey weather
l.s. with irreg. thin nodules
of creamy dolomite (weather in
relief.

- Below is dolomite as described

above → along falls

L-28/7/76-2 - 6050'

- steep cliff over small lake
- rock is grey finely mottled l.s.; some of mottles are broken into platy chips

Soil: reddish brown; 1 to 4" down to bedrock, rock fragments, full of rootlets

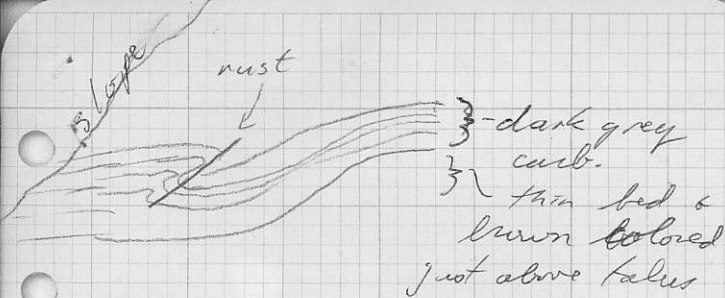


* -3 - 6350'

- Soil, reddish brown, at surface, clayey, full of chips, close to l.s. outcrops
- quartzite fragments in soil



Northerly side of Aurora Creek valley, next junction with Mitchell River. → at base cliff, sudden down warping of lower beds, rust zones, folding; light layer thicker than wood



northwesterly striking X-section

L-28/7/76-4 \approx 6000'

- coarse carbonate (magnesian?)
with pyrite cubes, replacing
dark grey, massive dolomite

At 5500', dark brown
weathering, platy argillaceous l.s.

-5 \sim 5500'

* - Soil, reddish brown, at
surface (talus fines), full of
chips; steep slope, beneath
outcrops grey dolomite &
a dark brown weathering,
light grey dolomite

Stephen a 75' thick - dark
grey to black, thin bed l.s.
with animal traces; some
orange laminations dolomite
- Below it is 50' of orange to
buff weathering interbedded
grey l.s. & argillaceous l.s. &
limy argillite → platy
- under it are limestones
(stromatolites), more massive
mottled l.s., light grey to
white massive dolomite &
dark grey l.s., then
dolomite → then platy
l.s. & argillite

✓ Cathedral grading down
to LE on some contact
with PE

- Cathedral ~ 1500' thick
200'

- Overlain by Stephen →
Eldon Pika (?), Anthony's
(reddish & yellowish dolomites)

July 30/76 - Rain

NTS - 87J 13/E

Lomenda, Sargent

- Traverse at base cliff on north side Aurora Creek at junction with Mitchell River

- bed 200/45°W

- Brown weather thin bedded argil. l.s. → grades

down into greenish weathered argillites

L - 30/7/76-1 ~ 5300'

- base of cliff → argillites

- rusty zone seen previous day directly above (connection to red soil & gothite seen on opposite side Aurora Creek?)

- float gothite here

L - 30/7/76-2 ~ 5000'

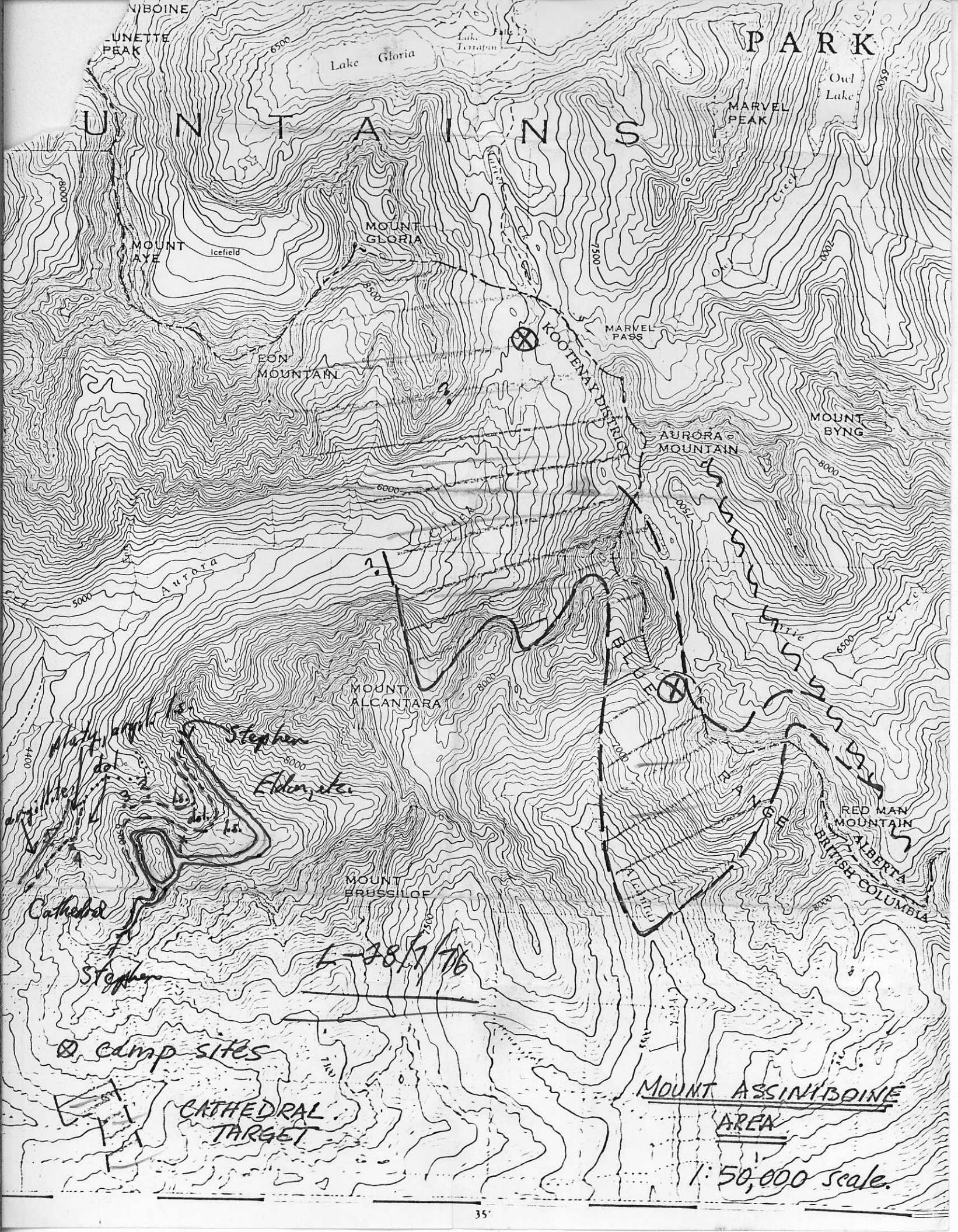
- Yellowish weathering magnesian veins up to 25' wide intruding into dark grey, finely lam. l.s.

- folding probably related

to magnetite or vice versa



→ 50° Az



ASSINIBOINE PEAK
MOUNT ASSINIBOINE
MOUNT GLORIA
MOUNT ALCANTARA
MOUNT BRUSSILOF
MOUNT BYNG
MOUNT AURORA
MOUNT EON
MOUNT AYE
MARVEL PEAK
MARVEL PASS
KOOTENAY DISTRICT
BRITISH COLUMBIA
ALBERTA

Lake Gloria
Lake Tenapin
Icefield
Aurora
Cathedral

Stephan
Eldersite
CAMP SITES
CATHEDRAL TARGET

L-78/7/76
MOUNT ASSINIBOINE AREA
1:50,000 scale.