

July 27/76 - cloudy, frosty,  
wet ground

N.T.S.

840790

Tiperary L.

Traverse westerly side  
of valley

L-27/7/76 - 1A - 6300'

\* Soil: dark chocolate brown, sandy,  
full of rootlets, 2-6" down, organic?

- 100' below cliff, weed  
covered, rocky

- up along small creek

L-27/7/76 - 1B - 6400'

- base cliff

- Talus fines; light brown,  
clayey, full of tiny chips

Rock: finely bedded, light  
grey weathering l.s. &  
l.s. congl.

- bed 45/50' W

L-27/7/70-2-6150'

- over lake, near center,
- a few rusty spots near base cliff, probably due to pyrite &/ or marcasite
- Marcasite pecks seen in talus in other places beneath cliff

- 3 - close to #2

(Soil (Talus fines) - dark chocolate brown, full of fragments & rootlets

- 4 - 6200'

- near base cliff
- soil, dark brown, full of chips, organic, 2-10" down

- 5 - 6400'

- rusty spots just on north side small creek
- rust is moss
- creeks follow thin veins dolyspar

with breccia fragments  
of l.s.

Creek is just east of  
contact with dolomite

Dolomite: dark grey, weather  
light grey, massive

L-27/7/76-6

Dolomite, light grey, weathers  
lighter, beds 1-5' thick, but  
looks massive (some scattered pisolites)

- bed 160/25°W

- underlies thin bed, finely  
lamin. dol. on west side  
gully

L-27/7/76-7 ~ 5800'

- bed 210/35°W

- edge of cliff, dolomite;  
dark to mid grey, weathers  
cream with orange, more  
dolomitic (?) laminations

in wavy fashion

- thin bedded

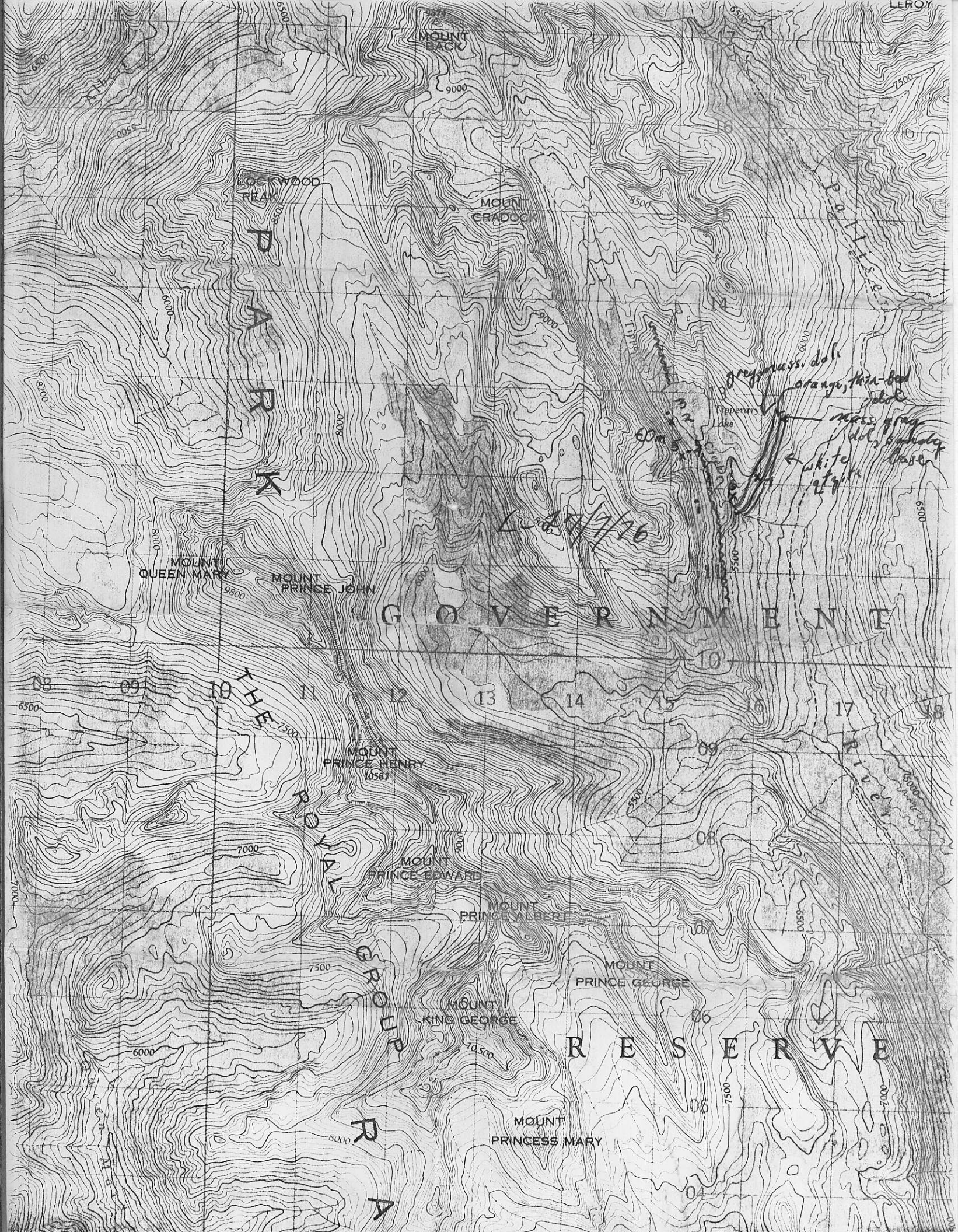
- looks like McKay l.s.

- wavy lam more like nodules in places & nearly pseudo-conglomerate
- a little lower in section is grey, massive dolomite (light grey)
- lower part interbedded with white qtzite, beds several feet thick
- lower yet is thicker unit of white X-bed med to coarse qtzite



Along creek near Tiperary h, is a thin sequence of dolomitic, arenaceous breccia - long & dolomite fragments in dolomitic qtz sandy matrix (X-bed)





P  
A  
R  
K

G O V E R N M E N T

T H E

R O Y A L

G R O U P

R E S E R V E

P A T I S S E

R I V E R

grey mass. dol.  
orange thin bed  
mass gray dol. sandy base  
white quartz

L 10/1/76

LEROY