

July 26/76 - sunny, windy
N. T. S. 82J13/E

Location: Headwaters Alcon Tara
Creek

840789

L-26/7/76-1 ~ 7000'

- below argillite → carbonates
above on mountain
- talus fragments of bluish-grey limestone & limy dolomite
- some have +ve zinc in
tiny lacae & hair-like fractures.
(concordant) of white dolomite
- wavy appearance
- +ve zinc uncommon
- At 8000', this l.s. lies
on light grey, creasing
weathering dd. - stromatolites
- contact sharp
- l.s. contains stromatolites &
is 20' thick; overlain by
grey mottled dolomite

22-

111

- into large draw; magnes. H vein?, some dolomite from ls crossing the l.s.
- below the stromatolites are more grey l.s. but looks massive & has less mottles
- talus from above is white, coarse thick-bedded, waxy det.

L-26/7/76-2 - 7300'

- bed $\approx 110^\circ/10^\circ S$
- creamy weathering, thin bed stromatolitic dolomitites
- talus around here & back to draw is largely coarse carbonate

L-26/7/76-3 - 7420'

- northern side of broad draw at headwaters Alcatara Creek
- Talus is mainly light grey to white, light grey weathering massive dolomite
- *Soil (talus fines): med. brown, 1-6" down, full of talus

L-26/2/76 - 4 ~ 7400'

- bed ~ 140/25°W

- thin bed creamy weather dolomite; finely lam.

- algal?

- 5 - - 7360'

- talus dark grey to black dolomite with wispy, fine white dolomite mottles → resembles the l.s. seen with Zn

Soil (talus fines); medium reddish brown, sandy, full of talus 2-6" down; lots rootlets

- 6 ~ 7000'

- base of cliff near waterfall

- dark & yellowish weathering layers & pods

- Dolomite, dark grey, limy, with white dolomite mottles (small); Dolomite, white to light grey, weathers creamy yellow, waxy

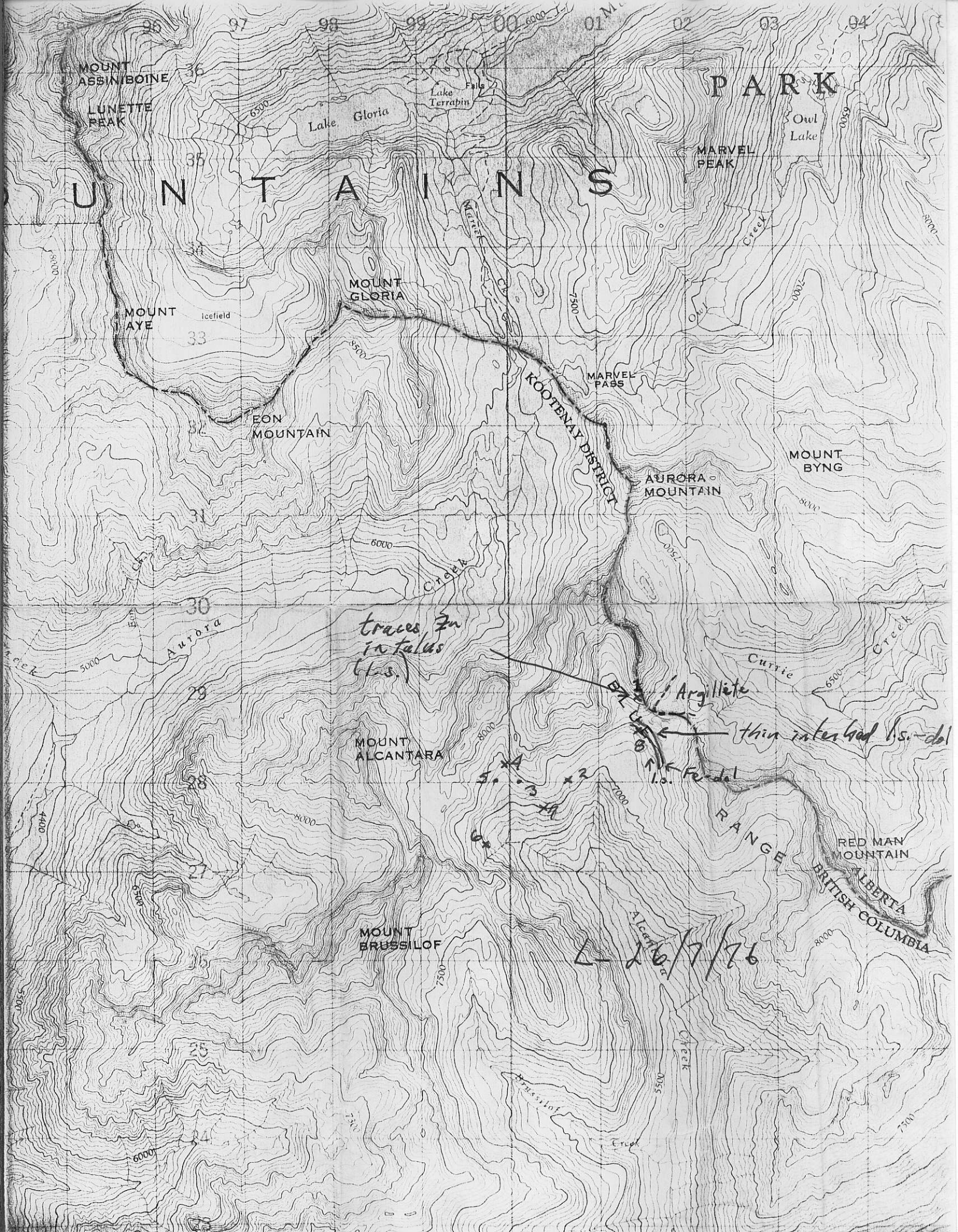
- 320 L Pacific Rainforest
- both are eroding but the
yellowish dol is much more
so.

L-26/7/76-7 ~ 7000'

- top vertical drop over
creek
- Cause ~~is~~ X line dolomite
massive

L-26/7/76-8 ~ 7500'

- base cliff top of creek
at continental divide
- Dark grey, bluish grey weather,
thin bed l.s. → thin
laminations (wavy) of dolomite
- Overlain abruptly by
dolomite: white, reddish
brown weathering, thin bedded,
looks massive, but fine
lamm. seen locally
- overlain by dark grey, thin bedded
platy l.s. with wavy red dolomite
interbeds
- bed $115^{\circ}/70^{\circ}W$



PARK

U N T A I N S

MOUNT ASSINIBOINE
 LUNETTE PEAK
 MOUNT AYE
 EON MOUNTAIN
 MOUNT ALCANTARA
 MOUNT BRUSSILOF
 MOUNT GLORIA
 MARVEL PASS
 AURORA MOUNTAIN
 MOUNT BYNG
 RED MAN MOUNTAIN

Lake Gloria
 Lake Terrabin
 Owl Lake

Icefield

KOOTENAY DISTRICT

BRITISH COLUMBIA

ALBERTA

Currie Creek
 Argillite
 R.L. Fendel

6000
 5500
 5000
 4500
 4000
 3500
 3000
 2500
 2000
 1500
 1000

96 97 98 99 00 01 02 03 04

36 35 34 33 32 31 30 29 28 27 26 25 24 23

traces in talus (bas.)

thin interbed ls. dol

L-20/1/76