

Report on 1 lot of Middle Cambrian fossils from a ridge between Mitchell and Assiniboine Creek, Rocky Mountains, southeast B.C. The collection was made in 1977 by L. Dekker, Chevron Standard Ltd., 901 Marine Bldg., 355 Burrard St., Vancouver, B.C. V6G 2G8.

"The relevant parts of any manuscript prepared for publication that paraphrase or quote from this report should be referred to the Eastern Paleontology Section, Ottawa, for possible revision."

Identification

Field No. L.D. 32-77F

Spencella sp.

GSC loc. No. 95592

Remarks. The distribution of this fossil in the Field, B.C. area has been documented in the Proceedings of the North American Paleontological Convention, Sept. 1969, Part I, p. 1155-1170 (W.H. Fritz, 1971). It is common in the fourth faunule of the Middle Cambrian Bathyuriscus-Elrathina Zone, which occupies the "thin" Stephen Formation and the upper part of the "thick" Stephen Formation. The occurrence of the fossil is shown on range charts in figures 4, 5, and 6 (loc. cit.).

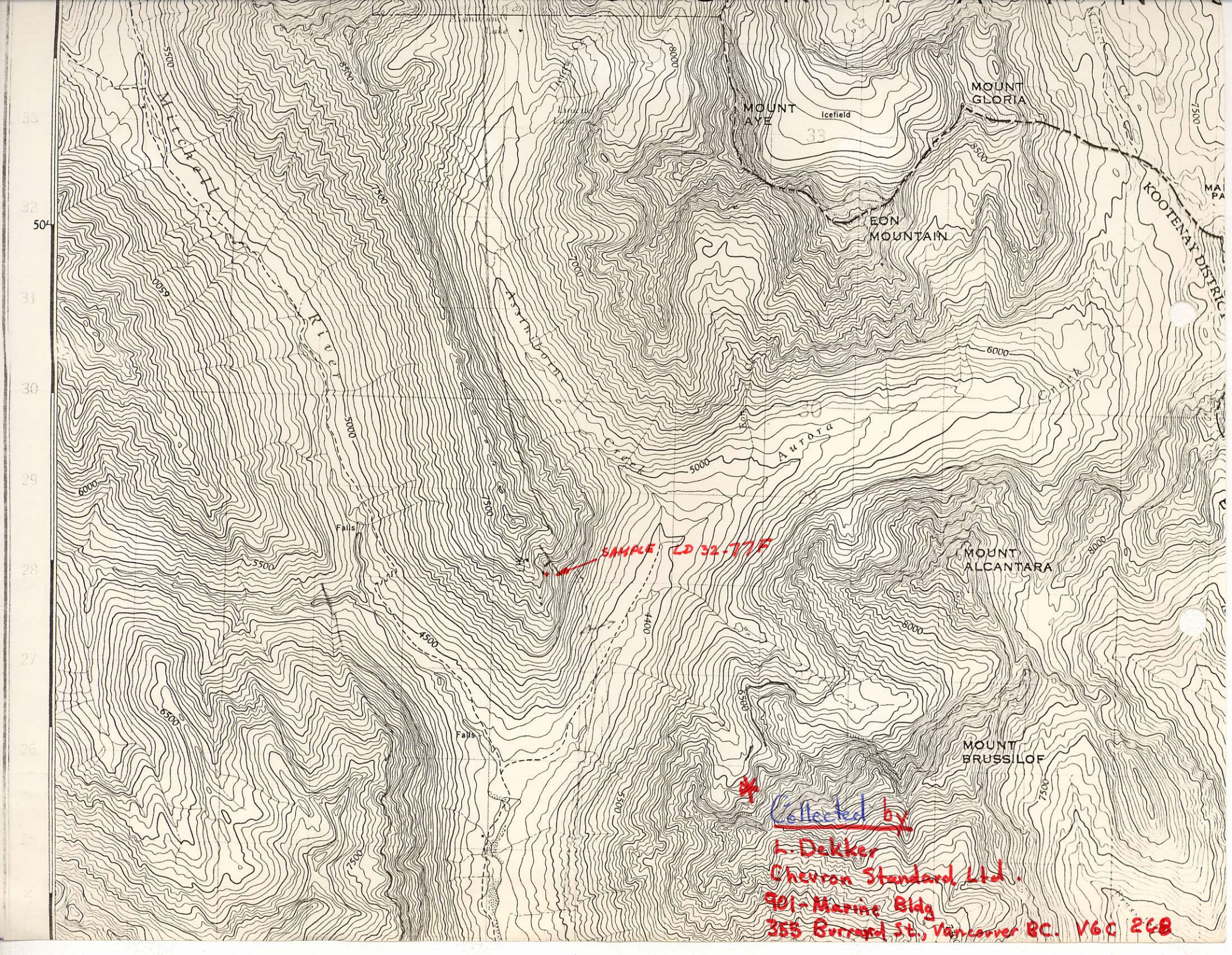
*W H Fritz*

W.H. Fritz

*M. J. Lapland*  
Geological Survey of Canada  
Eastern Paleontology Section  
Ottawa, 9 March 1978

Copy to: Dr. I.A. McIlreath

*This is a very interesting observation as there is a facies change slightly to the west in the vicinity of Mitchell River*



SAMPLE LD 32.77F

Collected by  
L. Dekker  
Chevron Standard Ltd.  
901 Marine Bldg  
355 Burrard St., Vancouver BC. V6C 2G8