

840684

M. Thicke.

IVER

JUNE 22 1984.

Terry & I began dirt bagging the IVER SP.  
A base line was set up to encompass anomalies found  
in '83. There is a rough location (N-S) of anomalous  
Au values & this soil grid should cover the anomalous  
zones & ground in between.  
Soil development ~~is~~<sup>is</sup> good with B-soil readily available.  
Line spacing is 200m & sample spacing is 50m.



# GEOCHEMICAL SAMPLE DATA SHEET

| <b>NAME:</b> MILLE THICKE     |               | <b>DATE:</b> JUNE 22 <sup>ND</sup> 84. |     | <b>MAP:</b> 104K.      |     |     |     |   |
|-------------------------------|---------------|--|-----|------------------------|-----|-----|-----|---|
| <b>PARTNER:</b>               |               | <b>PROJECT:</b> M504                   |     | <b>TRAVERSE NO.:</b> 9 |     |     |     |   |
| <b>LOCATION:</b> IVER CLAIMS. |               | <b>PHOTO NO.:</b> A11586-245.          |     |                        |     |     |     |   |
| SAMPLE NO.:                   | LOCATION      | HRN                                    | CLR | TEX                    | SLP | ORG | PHY | COMMENTS  |
| MT472-159                     | 10+00S 0+00E  | 2/4                                    | 1   | 3                      | -   | 2/4 | 4   |   |
| 160                           | 0+50E         | 2                                      | 1   | 3                      | -   | 1   | 4   |   |
| 161                           | 1+00E         | 2                                      | 1   | 2                      | -   | 1   | 4   |   |
| 162                           | 1+50E         | 2                                      | 1   | 2                      | -   | 1   | 4   |   |
| 163                           | 2+00E         | 2                                      | 1   | 3                      | -   | 2   | 4   |   |
| 164                           | 2+50E         | 2/4                                    | 1   | 3                      | -   | 2/4 | 4   |   |
| 165                           | 3+00E         | 2                                      | 1   | 2                      | 1   | 2   | 4   | NEAR STREAM CLOSE<br>TO FW374-558                   |
| 166                           | 3+50E         | 2                                      | 1   | 3                      | -   | 2   | 4   | SOUTH SIDE OF STREAM.                               |
| 167                           | 4+00E         | 2                                      | 1   | 3                      | -   | 1   | 4   |   |
| 168                           | 4+50E         | 2                                      | 1   | 2                      | -   | 1   | 4   |   |
| 169                           | 5+00E         | 2                                      | 1   | 2                      | -   | 1   | 4   |   |
| 170                           | 5+50E         | 2                                      | 1   | 2                      | -   | 2   | 4   |   |
| 171                           | 6+00E 10+00S. | 2                                      | 1   | 2                      | -   | 1   | 4   |   |
| 172                           | 6+00E 8+00S   | 2                                      | 1   | 3                      | -   | 1   | 4   |   |
| 173                           | 5+50E         | 2                                      | 1   | 3                      | -   | -   | 4   |   |
| 174                           | 5+00E         | 2/4                                    | 1   | 3                      | -   | 1   | 4   |   |
| MT474175                      | 4+50E         | 4                                      | 1   | 3                      | -   | -   | 4   |   |
| T476                          | 4+00E         | 4                                      | 1   | 3                      | -   | -   | 4   |   |
| 177                           | 3+50E         | 2                                      | 1   | 2                      | -   | 1   | 4   |   |
| 178                           | 3+00E         | 2                                      | 1   | 2                      | -   | -   | 4   |   |
| 179                           | 2+50E         | 2                                      | 1   | 2                      | -   | 1   | 4   |   |
| T4-180                        | 2+00E         | 4                                      | 1   | 3                      | -   | -   | 4   |   |
| 181                           | 1+50E         | 2                                      | 1   | 3                      | -   | 1   | 4   |   |
| 182                           | 1+00E         | 2/1                                    | 1   | 3                      | -   | 1   | 4   | (SOME UNREADABLE TEXT)                              |
| 183                           | 0+50E         | 2                                      | 1   | 2                      | -   | 1   | 4   | ~35M EAST OF BL - WOULD INTERSECT<br>BL. AT 7+75 S. |
| 184                           | 0+00E 8+00S   | 2                                      | 1   | 2                      | -   | -   | 4   |   |



M. Trübe

IUER

JUNE 23/84.

Gernot & I finished off B.C. to 2600s.  
We then dirt-bagged lines 2400s & 2600s. Also will  
run lines ~3700 W on a few of these southern lines.  
Samples taken as yesterday.

- ① Geochem along lined trend of Au anomalies
  - try to discover why not in south bend.
  - what is causing 2200 ppb Au!?

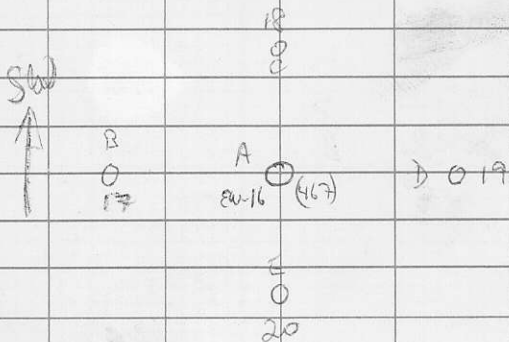
M. THICKE GRINGO JUNE 24/84.

FOLLOWING UP SG'S 1982  
700 pp6 Au.

DROPPED OFF ON S6272-465  
(9+00S 7+00W)

DOWN TO 9+00S 6+00W  
NO OUTCROP - EW-15 SOIL  
SAMPLE TAKEN FROM HOLE  
AND ONE BULK SAMPLE  
FROM THIS LOCATION.

DOWN TO 9+00S 5+00W  
(S6272-467). RE-SOILED & COLLECTED  
BULKS - SEE DIAGRAM



SUB-CROP ENCOUNTERED AT  
THIS LOCATION WERE FRESH  
INKLIN FM GYWR.

DOWN TO 9+00S 4+00W  
RE-SAMPLED SOIL (EW 472-23)  
ALSO COLLECTED BULK  
SAMPLE AT HIS LOCATION.

BUT ALSO SAMPLED  
SOME SOIL AT 4+25W  $\frac{1}{2}$   
5+50W.

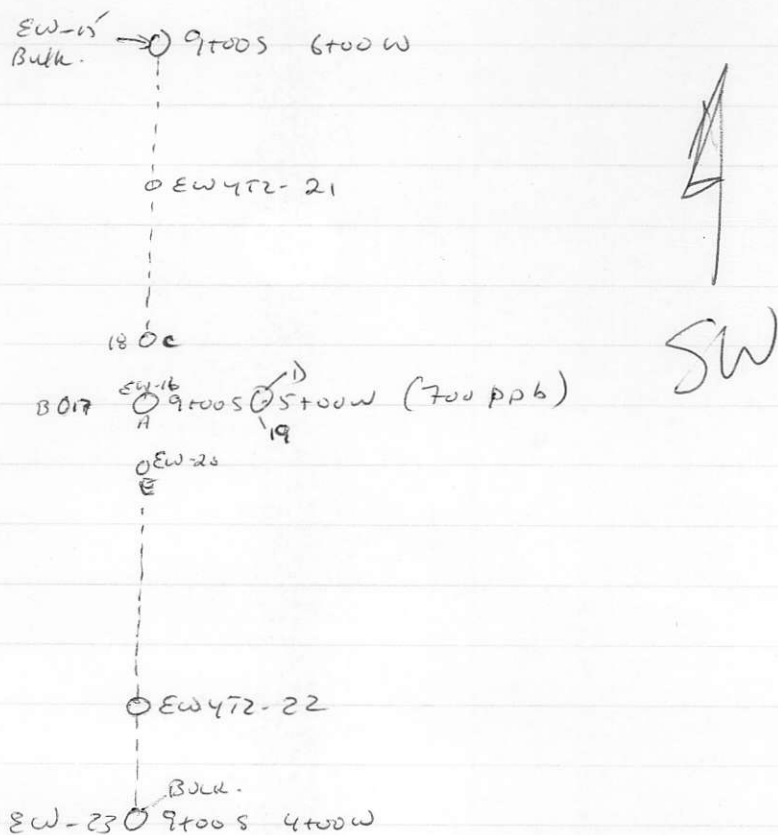
AFTER LUNCH FLOW  
OVER TO HO CK AREA  $\frac{1}{2}$   
SOIL SAMPLED SOME FILLTN  
WITH M.G. ABOVE CLIFFS  
(FROM 1ST PCY CAMP) R.W.  $\frac{1}{2}$   
G.W. SOILED ~~THE~~ A LINE A  
COUPLE OF HUNDRED METERS  
ABOVE US.

M. Thicke.

GRINGO / HO

JUNE 24/84.

Went out to GRINGO in A.M. to follow-up at S.G. soil sample of 1982 (700ppb Au). Found the location of bulk sampled & soiled sampled the anomalous hole & around the immediate area. Very little outcrop in the area - though minor amounts of fresh Inclin Fur ~~sed~~ greywacke.



Flew over to HO to do a couple of contour soil lines for fill-in as discussed with Helmut on June 23/84. Lines were contour-lines run above cliffs up from the first fly-camp on Yeth Ck.

M. THICKS

RIVER

JUNE 25/84.

MIKE & I COMPLETED DIRTBARRING  
6+00S THEN BEGAN FOLLOWING  
UP ANOMALIES IN THE CK BETWEEN  
RIVER & TAKER.

WHERE CREEK FORKS IN EAST PART  
OF CLAIM IN BD-100 AREA (100ppb Au)

MT471-204

OK IN CREEK.

TAKEN NEAR BD-101. OK OF  
PHYL-GYST, HEMATITE & CHLORITE ON  
FRESH SURFACES GENERALLY RUSTY  
ON FRESH. CONTAINS QZ & CARB  
VEINS & DISSEM SULPHIDE TO  
<0.5%.

FOLIATION (LAYERING) 00S/STEEP E.

MT471-205

OK AT CK JCT.

SAME ROCK AS #204 ONLY  
COLLECTED AT BD-100.

FOLIATION (ALSO ONE OF PROMINENT FCT  
DIRECTIONS) 00S/STEEP WEST.



JUNE 25/84

MT4T1-206

FLOAT IN STREAM.

STWIK QZ VEIN WITH A BK TEXTURE.

WHITE F.G. QZ CONTAINING ~ 0.5%

PY DISSEM. CONTAINS A RUSTY

WHITE-LIGHT GREY LIMONITIC STOCKWORK. ~~TRAIL~~

SOME MINOR REACTION TO HCl.

NOT ABUNDANT IN STREAM.

IVERLINE

WALKED DOWNSTREAM TO LOOK

FOR BD-93 (160ppb) AND TO

CHECK OUT THE IVERLINE JCT

WITH THE CREEK. FW374-560

WAS COLLECTED ON IVERLINE. SAMPLE

OF LANDSLIDE & TALUS MATERIAL

- NOT A GOOD SAMPLE - MUCH

SLUMP DEBRIS AROUND. ROCKS

IN THE VICINITY APPEAR FRESH,

& WELL FCTD.

FOUND BD-93 - REALLY NO

EXPLANATION FOR SOIL TO

RUN 160 - LOOKS LIKE PRETTY

JUNE 25/84.

GOOD SOIL FOLIATED BRST  
 VERY FRESH AROUND SAMPLE  
 SITE. MB4T2-174 RE-  
 SAMPLED.

STRUCTURE: 1 ✓ 073/15 NW.  
 2 ✓ 019/25 NW.  
 3 ? 050/36 NW.

MT4T1-207 o/c

NO HAND SPEC

GOUGE MATERIAL BUT STILL  
 RECOGNIZABLE AS A PHYL.

CHLORITE GREEN & HERCYNITE RED  
 LAYERS. SULPHIDES ?? UNABLE  
 TO OBTAIN AN ORIENTATION.  
 TAKEN ON THE "IVERLINE" ON  
 SOUTH SIDE OF CK.

\* NOTE THAT ON THE NORTH  
 SIDE OF THE CREEK AT THE IVER-  
 LINE AREA THERE IS ABUNDANT  
 RECENT COLD SPRING DEPOSIT  
 MATERIAL CONTAINING CLASTS  
~~FROM~~ OF ALL ROCK TYPES IN THE  
 AREA.

JUNE 25/84.

MTYTI-208

OIC.

AT FW-556 (2200 ppb Au).  
 UNALTERED, FOLIATED <sup>STIKING SED.</sup> ~~EST~~ W/  
 RUSHY CARB VEINS. SAMPLE OF  
 A WHITE, F.G. 1CM - 3CM WIDE  
 Q3 VEIN. STRIKES 047/VERTICAL.  
 CONTAINS SOME BLACK, AT  
 TIMES NEEDLE LIKE, MATERIAL  
 - POSSIBLY T $\phi$ .

MTYTI-209

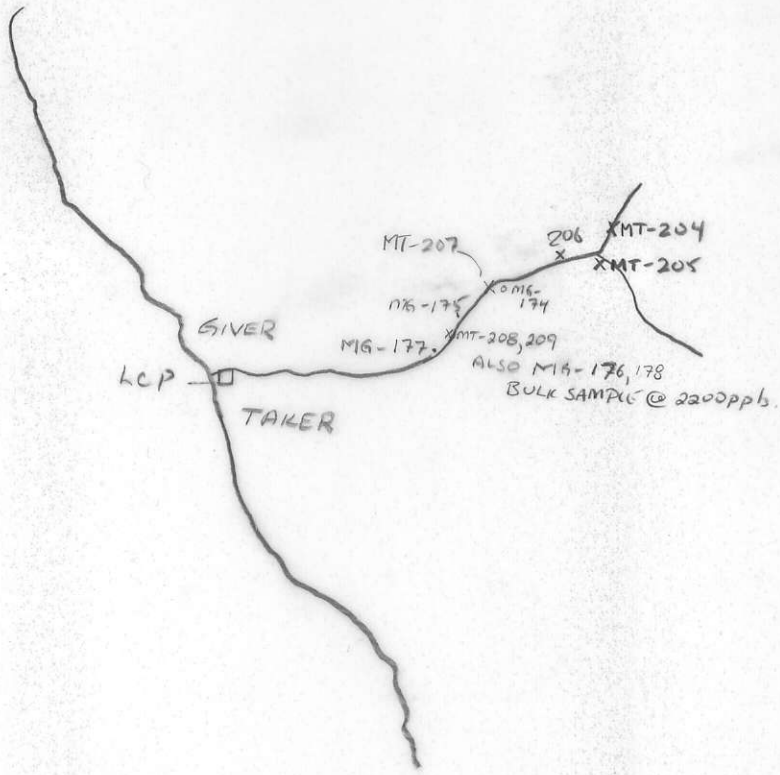
OIC.

FOLIATED STIKING SED (FG.-M.G.  
 GYWK ??). NOT REALLY LIKE A  
 BRST. CONTAINS DISCONTINUOUS  
 Q3 (#208) & CARB VEINS. FRESH  
 ROCK. TAKEN AT #208.  
 ↗ 000/35 W.

|         |               |                          |       |       |             |      |        |                              |    |
|---------|---------------|--------------------------|-------|-------|-------------|------|--------|------------------------------|----|
| Project | M504          | NTS                      | 104 k | Scale | 1:30,000    | Page | 1 of 2 | Traverse                     | 11 |
| Sampler | THICK<br>GRAY | Location, Target (words) |       |       | IVER.       |      |        | Sample Nos MT-204 to 209     |    |
| Date    | JUNE 26/84    | photo no.                |       |       | A1586 - 245 |      |        | Cert. Nos MG-174-178 (soil?) |    |

- GOSAN, MINERALS
- INTRUSIVE
- LIMESTONE DOLOMITE
- SHALE
- CHERT
- VOLCANIC
- CONGLOMERATE
- SANDSTONE SILTSTONE
- SANDSTONE SILTSTONE

SPECIMEN SITE A,B,...; DO NOT WRITE ON OTHER SIDE OR USE COLOURS  
DON'T FORGET CONTOURS, DRAINAGE, NORTH ARROW, LAT/LONG, SAMPLE SITES, WORKINGS, TRAILS, GOSSANS, OBSERVED GEOLOGY: DEFINED --- INFERRED --- ASSUMED.....



GEOCHEM: Cu Mo Pb Zn U W ASSAY:

|                 |                               |                |             |             |
|-----------------|-------------------------------|----------------|-------------|-------------|
| Project M504    | NTS                           | Scale 1:30,000 | Page 1 of 2 | Traverse 11 |
| Sampler         | Location, Target (words) IVER |                | Sample Nos  |             |
| Date JUNE 25/84 | photo no.                     | Cert. Nos      |             |             |

WSD-2999 113D  
ATTITUDES  
(100/40 N)

DO NOT FORGET CONTOURS, DRAINAGE, NORTH ARROW, LAT/LONG, SAMPLE SITES, WORKINGS, TRAILS, GOSSANS, OBSERVED GEOLOGY: DEFINED — INFERRED --- ASSUMED.....

GEOCHEM: Cu Mo Pb Zn U W

ASSAY:

INTRUSIVE

LIMESTONE DOLOMITE

SILT X SOIL ● ROCK ■

SHALE PAN Δ WATER ○

CHERT

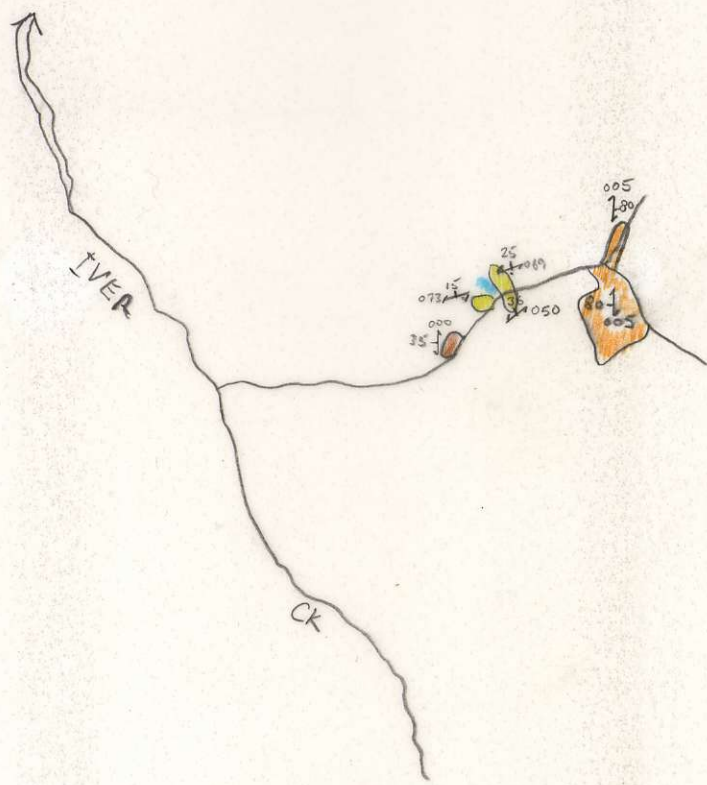
VOLCANIC

CONGLOMERATE

SANDSTONE SILTSTONE

SPECIMEN SITE A,B,...; DO NOT WRITE ON OTHER SIDE OR USE COLOURS

DO NOT WRITE ON OTHER SIDE OR USE COLOURS



STIRKINE ASSEM.

- FOLIATED GRST.
- FOLIATED GYWK/SLST.
- FE-CARB ALTD  
PHYL & GRST.
- COLD SPRING  
DEPOSIT.

M. Thibe.

IVER

June 25/94.

Mike B. & myself dirt bagged like 6000 to complete ~~the~~ the grid to 10000. Gerny will continue on ~~work~~ tomorrow.

We then began checking out soil anomalies that ~~most~~ are situated on the creek separating BIVER & IVER including FW-556 (2200 ppb Au). Most soils were duplicated where geology couldn't explain anomaly. In ~~most~~ <sup>all</sup> cases geology couldn't explain the anomalies - but rx were collected to try & cover area. A bulk sample was also collected at the 2200 ppb location as well as a qz vein & foliated strike sed at this location.

Very little alteration can be seen in this anomalous area except for some qz - carb altered phyllites & greenstones, these are not too juicy though two samples were collected from this area.

M. THICKS

IVER

JUNE 26/84.

WALKING DOWNSTREAM ON CREEK THAT FLOWS THROUGH TRAKER TO CHECK OUT SOME BD & EW '83

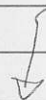
ANOMALIES. SEE MIKE GRAY'S NOTES FOR THE DAY ON ROCK DESCRIPTIONS ETC.

I'M TAKING SOILS TODAY.

|        | COL | TEX | SLP | HRN | ORG. |
|--------|-----|-----|-----|-----|------|
| MT-210 | 1   | 3/4 | -   | 4   | -    |

#210 WAS TAKEN AT EW 374-198.

BACK UP TO BD-127 - LOOKS LIKE POSSIBLY A BREAK IN SLOPE ??



MOVING UP-STREAM TO FOLLOW UP EW-213 & BD-2133.

AT EW-213 SOME GREY - BUFF LIMST, GENERALLY INTRUDED BY ABUNDANT DO VEINS & POSSIBLY MAJOR QZ VEINS. CONTAINS PY CUBES LOCALLY UP TO 0.5%.

JUNE 26/84.

LMST ALSO CONTAINS CARBONACEOUS SEAMS. THIS IS WHAT CAUSED THE BLACK "SOIL" WHERE EW-218 WAS COLLECTED. ROCKS TAKEN AT THIS LOCATION WERE M64T1-182, 183.

MT-212

1            2            -            2            1

~~MT~~ WAS TAKEN A FEW METERS UP SLOPE FROM BDST 2-133. AT BD'S SOIL LOCATION THERE IS QUITE A BIT OF GROUND-WATER SEEPAGE.

WALKED UP-STREAM TO BDST-146. SAMPLE COLLECTED FROM OLD STREAM BANK OR MORRAINE. BLACK TAKWANI SHALE ON SOUTH SIDE OF CREEK.



M. Thibe.

IVER.

JUNE 26 1894.

M. Gray & I were checking out 83 soil anomalies as well as the prominent limestone on the TAKER claim. Mike G. took rocks while I re-sampled some of the anomalies.

Most rocks were unaltered (only Fe-CARB) & unmineralized. Limestone cropping out in the creek seemed quite dolomitized and one narrow sample contained probably 0.5 to 1% pyrite disseminations & stringers.

Some of soil anomalies may be break in slope & seepage anomalies.

WENT BLASTING  
IN P.M.

M. THICKE

IVER.

JUNE 27/84.

OUT TO IVER TO MAP &  
PROSPECT ~~FOR~~ NORTH FLOWING  
CREEKS THAT FLOW INTO THE  
MAIN CREEK BETWEEN RIVER  
& TAKER.

BEGAN IN FRESH FOLIATED  
GRST (TUFFACEOUS) RUSTY & GREEN  
ON WEATHERED SURFACE, GREEN  
ON FRESH. MODERATELY TO WELL  
FCT. ① ↗ 036/35NW

② ~~↘~~ ↗ LIMB OF ANTIFORM.

③ RUSTY Fe-CARB ALT<sup>n</sup> GRST.  
WELL FCT<sup>n</sup> ↗ 035/63NW.

MT4T1-213

o/c

RUSTY GRST CONTAINING < 0.5% PY  
CONTAINS WHITE & DARK GREY  
STRINGERS - USUALLY D<sub>8</sub> OF CA.  
RUSTY ON WEATHERED SURFACES,  
GREENISH ON FRESH. RUSTY ENVELOPS

JUNE 27/84.

AROUND FCT.

④ FRESH, WELL FCT GRST.

⑤ Fe-CARB AL<sup>0</sup> FOLIATED GRST.

✓ 004/74 W.

MT4T1-214

o/c

SIMILAR TO #213 ONLY #214  
CONTAINS  $\geq 0.5\%$  PY BLENDS &  
DISSEMINATION SAME RUSTY Fe-  
CARB AL<sup>0</sup> GRST THAT IS EVERYWHERE  
IN THIS AREA.

⑥ Fe-CARB AL<sup>0</sup> GREENSTONE.

NOTE THAT AREA ⑤ & ⑥ CONTAIN  
MORE PY & PERHAPS MORE INTENSIVELY  
AL<sup>0</sup> THAN OTHER GRST IN THIS  
CK

⑦ FRESH, PURPLISH GRST(?) SMALL o/c.

✓ 157/75 SW.

JUNE 27 194.

⑧ ✓ 167/65 NE.

GREEN CHLORITIC PHYLL. WELL  
FET, FRESH WITH LOCAL  
ZONES OF Fe-CARB ACT<sup>NS</sup>.

⑨ Q Fe-CARB ALTD GREENSTONE, SAME  
AS # 214. ✓ 030/27 SE

⑩ ✓ 068/43 NW. FRESH, GREEN

FEST. LINEAR "FABRIC" - OFTEN  
APPEARS "ROD-LIKE". THESE "RODS"  
OFTEN APPEAR WELDED OR  
ELLIPTICAL. POSSIBLY THIS UNIT  
IS/AS AN OCEAN FLOOR BASALTIC  
FLOW ~~STRUCTURE~~ & THESE ROD-LIKE  
STRUCTURES ARE PILLOWS(?) OR  
ROPEY LAVA STRUCTURES.

LOCALLY CONTAINS "PHENOCRYSTS"  
OF A DARK GREENISH MAFIC MINERAL.  
- POSSIBLY AUGITE PHENOS THAT  
ARE STRETCHED & ELLIPTICAL  
SHAPED.

GENERALLY FRESH ROCK CONTAINS

MINOR Fe CARB VEINS.

VOLCANIC CONGLOMERATE SANDSTONE SILTSTONE  
SPECIMEN SITE A.B...; DO NOT WRITE ON OTHER SIDE OR USE COLOURS

INTRUSIVE LIMESTONE DOLOMITE SHALE PAN CHERT WATER  
SILT X SOIL ROCK

GOSSAN MINERALS

DON'T FORGET CONTOURS, DRAINAGE, NORTH ARROW, LAT/LONG, SAMPLE SITES, WORKINGS, TRAILS, GOSSANS, OBSERVED GEOLOGY: DEFINED --- INFERRED --- ASSUMED.....

|         |              |                          |            |       |          |            |    |          |    |
|---------|--------------|--------------------------|------------|-------|----------|------------|----|----------|----|
| Project | M 504        | NTS                      | 104 K      | Scale | 1:30,000 | Page       | of | Traverse | 18 |
| Sampler | M. THICKS    | Location, Target (words) | IVER       |       |          | Sample Nos |    |          |    |
| Date    | JUNE 27 1984 | photo no.                | A11586-245 |       |          | Cert. Nos  |    |          |    |



STIKINE ASSEMBLAGE

- Fe CARB ALTERED GREENSTONE
- FOLIATED GREENSTONE
- CHLORITIC PHYLLITE
- LIMESTONE

GEOCHEM: Cu Mo Pb Zn U W ASSAY:

M. THORPE.

IVER

JUNE 27/84.

Out to prospect & map 2 creeks on RIVER/TAKER  
claim boundary.

Rocks encountered along trail were all Strike Assemblage  
rocks; they include:

- ① fresh foliated greenstones.
- ② fresh phyllite chloritic
- ③ fresh grey- $\frac{1}{2}$  whitish limestone.
- ④ Fe-CARB altered greenstones containing up to  
1% pyrite.

No rocks encountered were juicy. The alteration of  
the greenstones is likely due to Fe-carbonate veins. Minor  
quartz veins could be seen intruding greenstones.

M. THICKS

SLAM

JUNE 30/84.

MIKE & I FINISHED OFF B.L.  
TO 2800N. WE THEN WALKED  
BACK TO THE CIRQUE BELOW  
THE MAIN BODY OF SILICIFICATION.  
CONTINUE TO PROSPECT & OUTLINE  
DETAILED MAPPING OF  
SILICIF<sup>N</sup>.

IN CIRQUE

MT4T1-215

TALUS

TOTALLY SLFD KMST(?). BRXX  
WITH LIKELY 2 PHASES OF  
MINERALIZ<sup>N</sup>. FRAS ARE WHITE TO  
LIGHT GREY, MAX MED GREY, VERY  
FINE - POSSIBLY SULPHIDE RICH.

PY F.G & BRASSY, ALSO ~~BRASSY~~  
(siliceous) DISSEM  $\rightarrow$  POSSIBLY LATER STAGED.

MAY CONTAIN ~~SE~~ AS, APPEAR  
TO HAVE SC ON WEATHERED  
SURFACE. SULPHIDE  $\approx$  0.5%.

VERY JUICY ROCK. ALSO A FEW  
VUGS LINED W/ QZ XLS.



JUNE 30 184.

MT4T1-216

TRALUS.

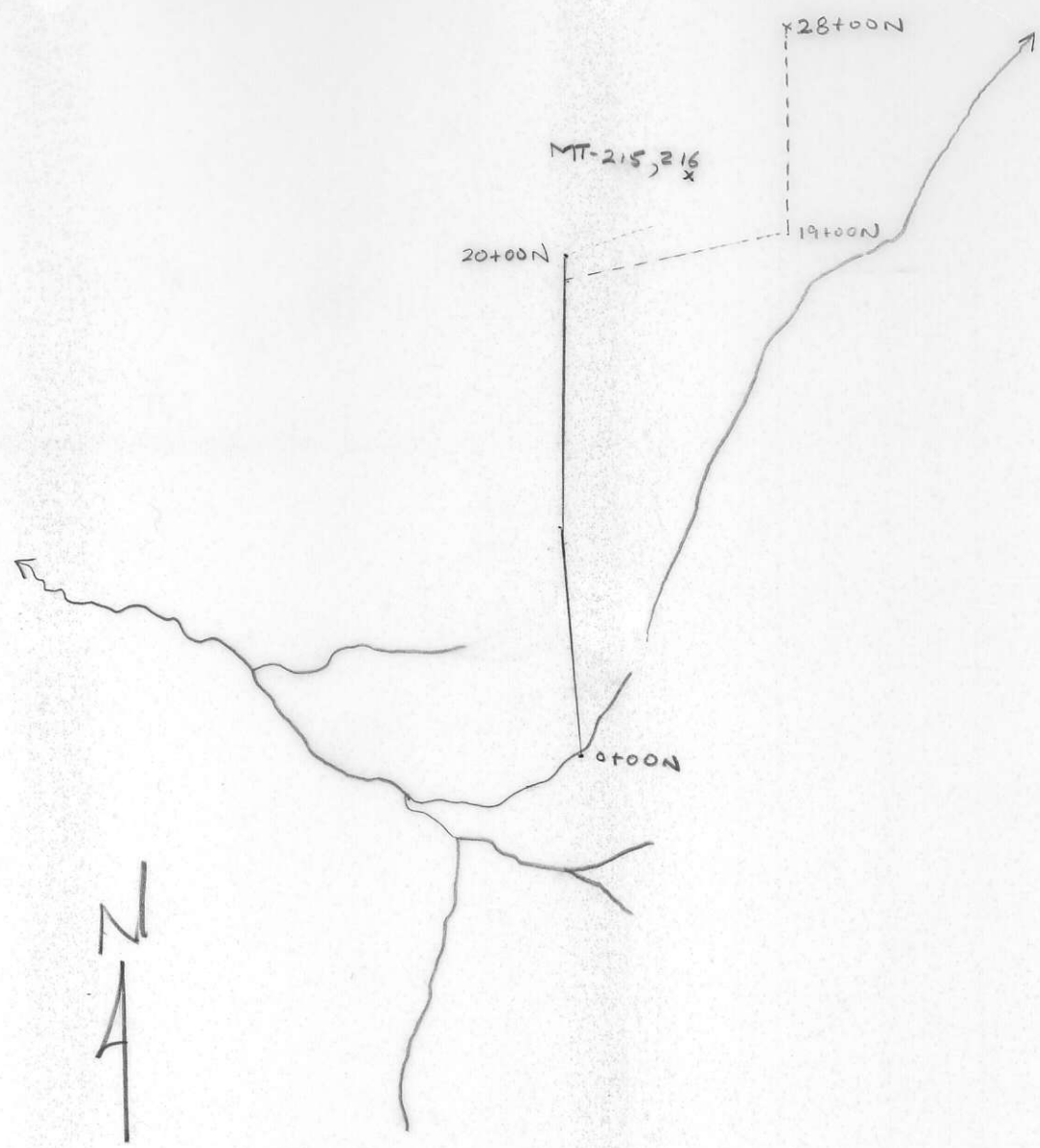
SLFD BRXX LMST(?). FRAGS  
 MOSTLY WHITISH, ANGULAR & UP TO  
 1CM LONG. PK MEDIUM TO DARK  
 GREY POSSIBLY SULPHIDE RICH -  
 MED TO DARK GREY, F.G. BRASSY PY  
 ± 0.5%. JULY. "RUST" ON  
 FCT & ENVELOPING INTO BRXX.  
 MINOR CAVITIES.

|                   |                                |                |            |              |
|-------------------|--------------------------------|----------------|------------|--------------|
| Project M504      | NTS 104k                       | Scale 1:32,000 | Page of    | Traverse 14  |
| Sampler M.T./M.G. | Location, Target (words) SLAM. |                | Sample Nos | MT-215 & 216 |
| Date JUNE 30/84   | photo no. A11586-176           | Cert. Nos      |            |              |

JUNE 29/84.

- GOSSEN, MINERALS
- INTRUSIVE
- LIMESTONE DOLOMITE
- SILT X SOIL ● ROCK ■
- SHALE
- CHERT
- WATER ○
- VOLCANIC
- CONGLOMERATE
- SANDSTONE SILTSTONE

SPECIMEN SITE A,B,...; DO NOT WRITE ON OTHER SIDE OR USE COLOURS  
DON'T FORGET CONTOURS, DRAINAGE, NORTH ARROW, LAT/LONG, SAMPLE SITES, WORKINGS, TRAILS, GOSSANS, OBSERVED GEOLOGY: DEFINED — INFERRED - - - ASSUMED - - -



GEOCHEM: Cu Mo Pb Zn U W ASSAY: