

WAYSIDE

840540

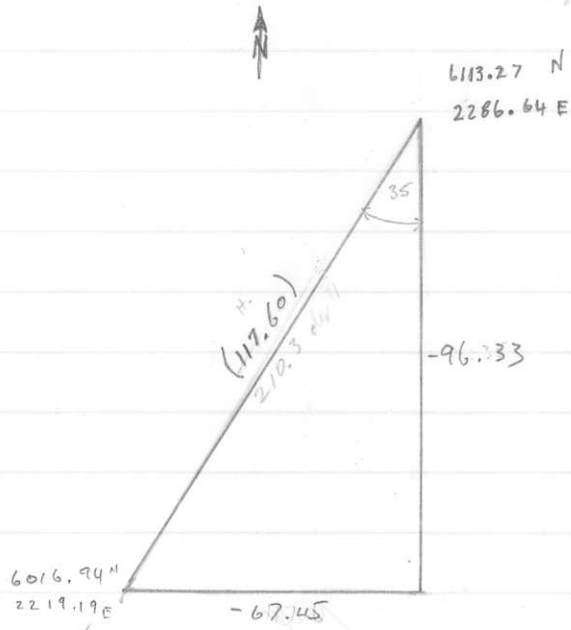
Hole 79-S-1

230 -74°

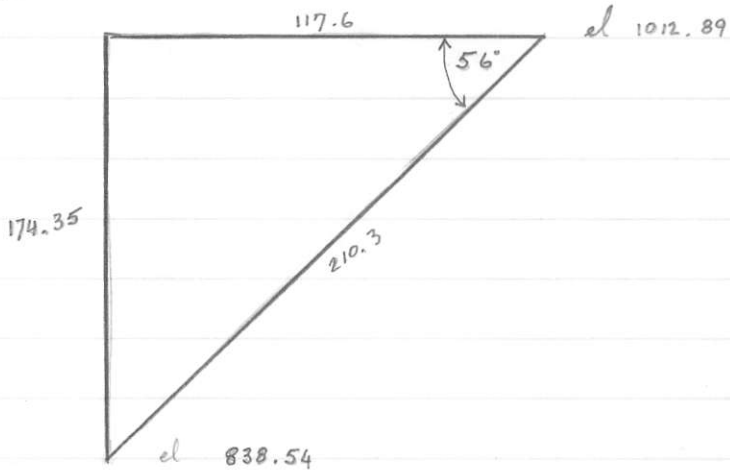
Au.
86-89 1.58 2/1
(82-89 .695 2/1)



Plan

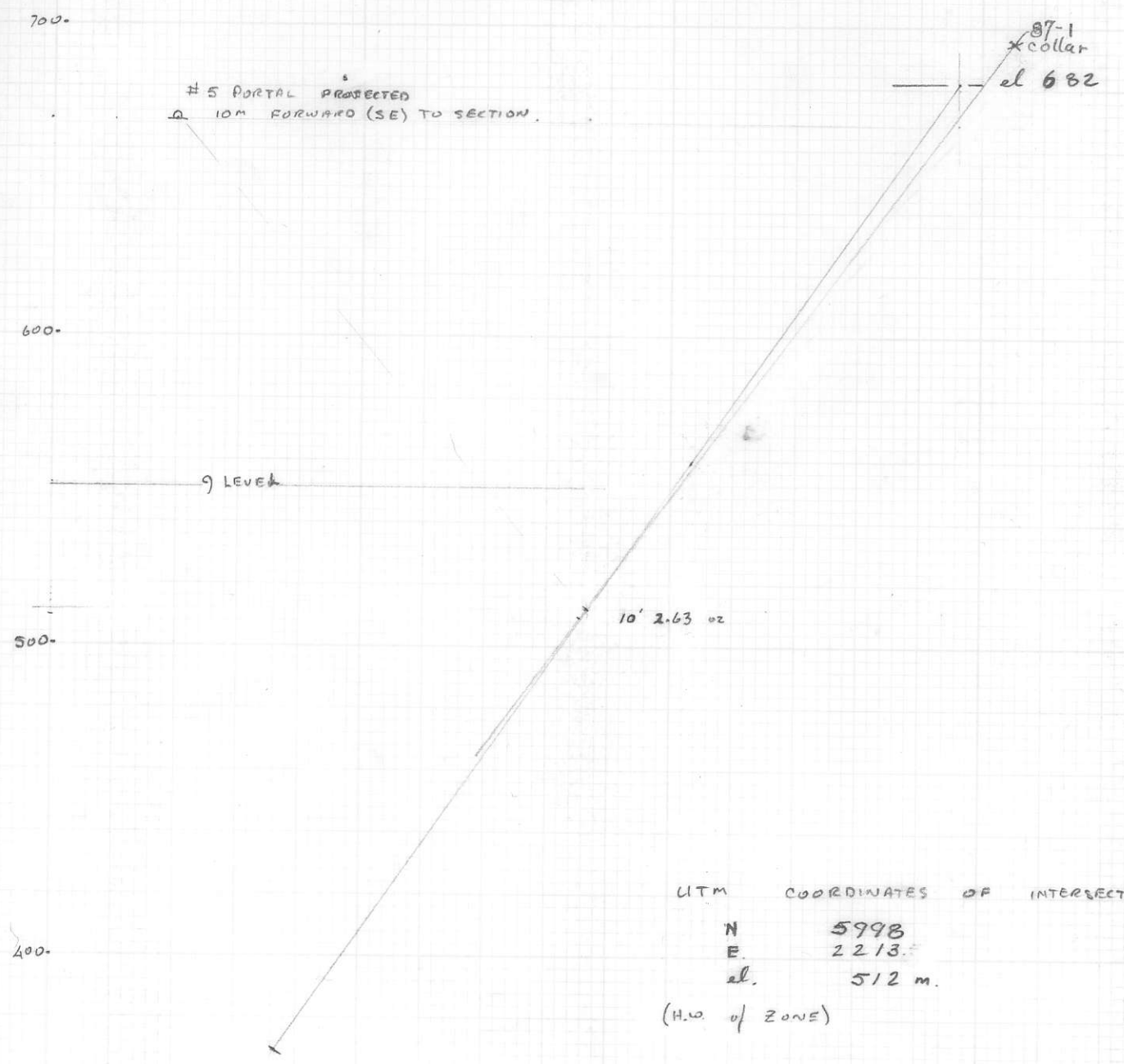


Secn.



WAYSIDE
HOLE 80 S-10

SECTION ALONG 215° LOOKING NW



UTM COORDINATES OF INTERSECTION:-
 N 5998
 E 2213
 el. 512 m.
 (H.W. of ZONE)

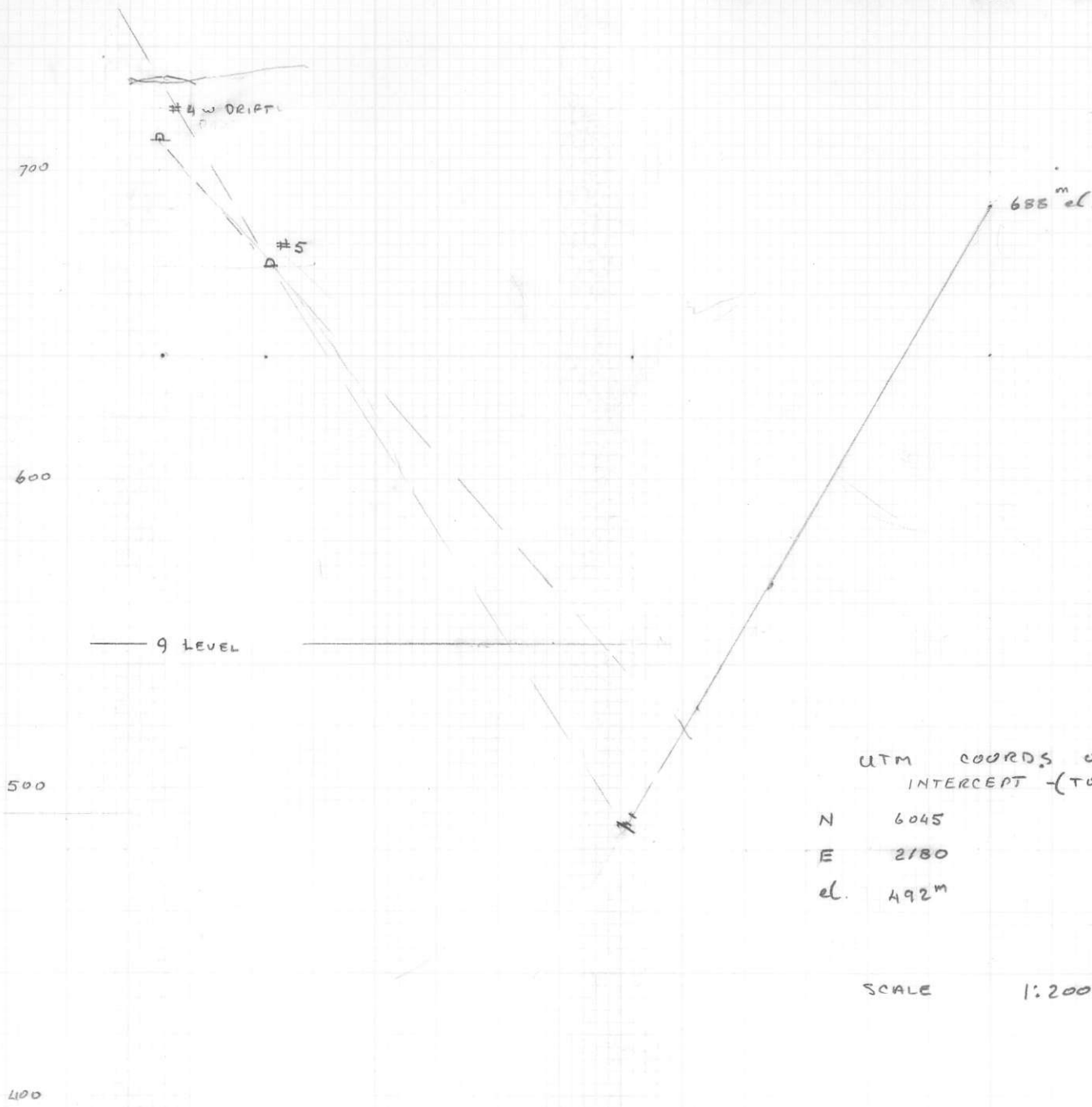
from Elwell 1982
 @ vein 685' - 700'; 10' from 685 to 695 AVG 2.63 g/T Au
 (208.79) 1.02 g/T Ag
 m.

1:2000 SCALE 1:2000

69'

WAYSIDE
HOLE 80-S-11 (31-S-1)

SECTION ALONG 235° LOOKING NW



UTM COORDS OF INTERCEPT -(TOP OF H.W.)

N	6045
E	2180
el.	492m

SCALE 1:2000

after Elwell '82
 Hole completed to 767'
 754 to 764 showed gts with mariposite
 avg .003 g/T.

THIS HOLE MAY NOT HAVE PENETRATED THE ZONE. cf. ADIT, LEVEL 0, WHERE HIGH GRADE QTZ IS ~15 to 20m W OF MARIPOSITE / QTZ SHEAR ZONE.

FROM COLLAR OF WS-6

DRILL 258° -73°

Should hit previous intercept
of Wayide with Hole 79-10.

projected depth = 151m = 495 ft.

700

600

9 LEVEL

el of intercept on DDH 81-5-10 (512)

500

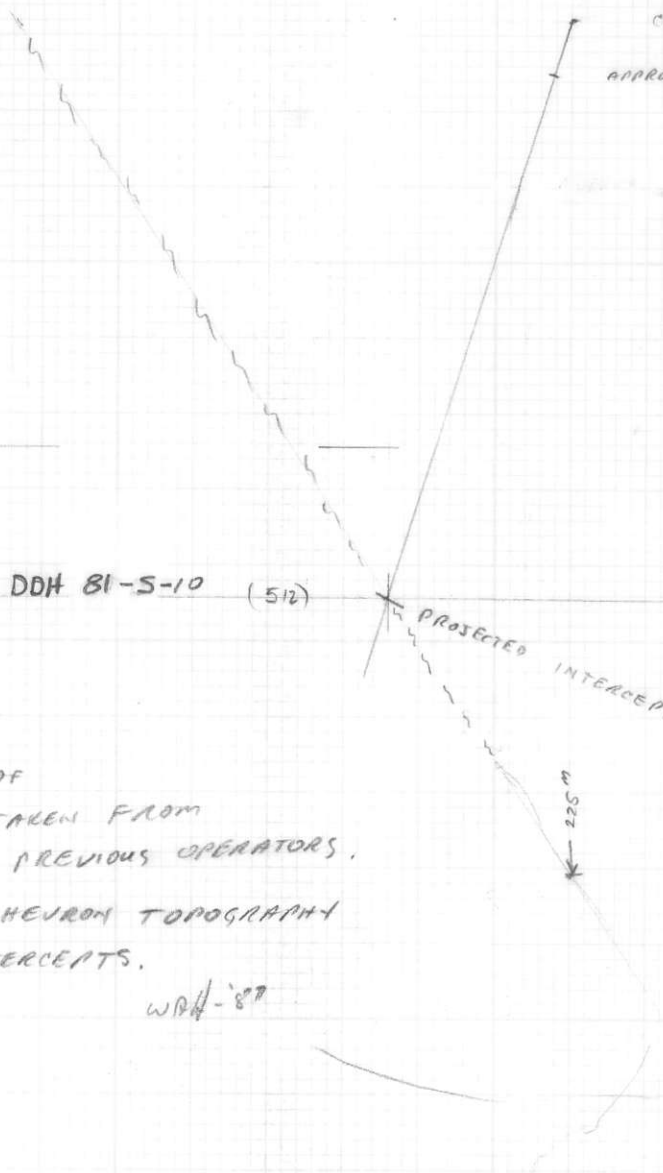
collar WS-6
APPROX. OVERBURDEN

PROJECTED INTERCEPT

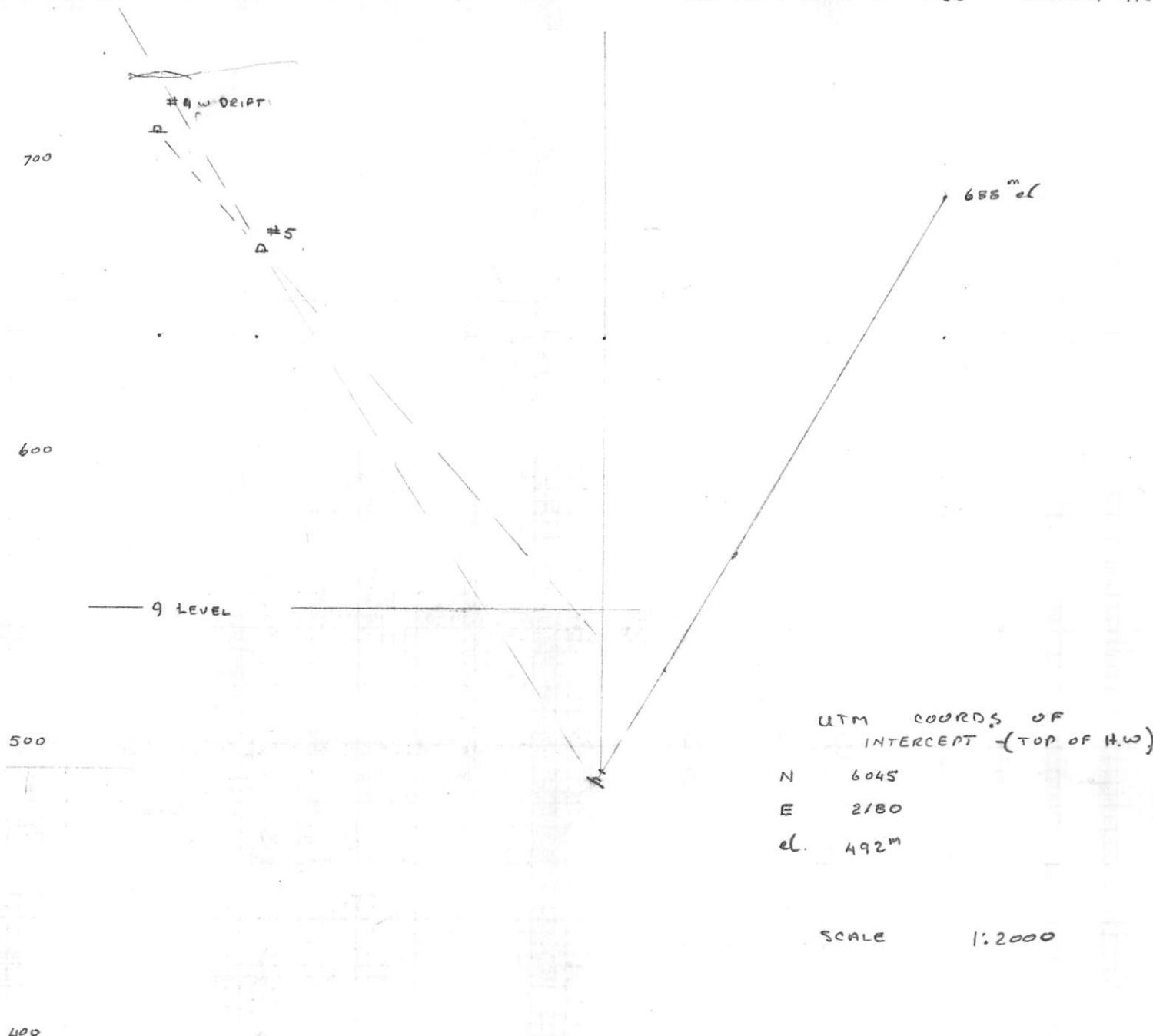
225m

COLLAR LOCATIONS OF
ALL HOLES ARE TAKEN FROM
DATA PROVIDED BY PREVIOUS OPERATORS.
ELEVATIONS FROM CHEVRON TOPOGRAPHY
AND CALCULATED INTERCEPTS.

WAY-87



WAYSIDE
 HOLE 81-S-11 (81-S-1)
 SECTION ALONG 235° LOOKING NW.



UTM COORDS OF
 INTERCEPT (TOP OF H.W.)
 N 6045
 E 2180
 el. 492^m

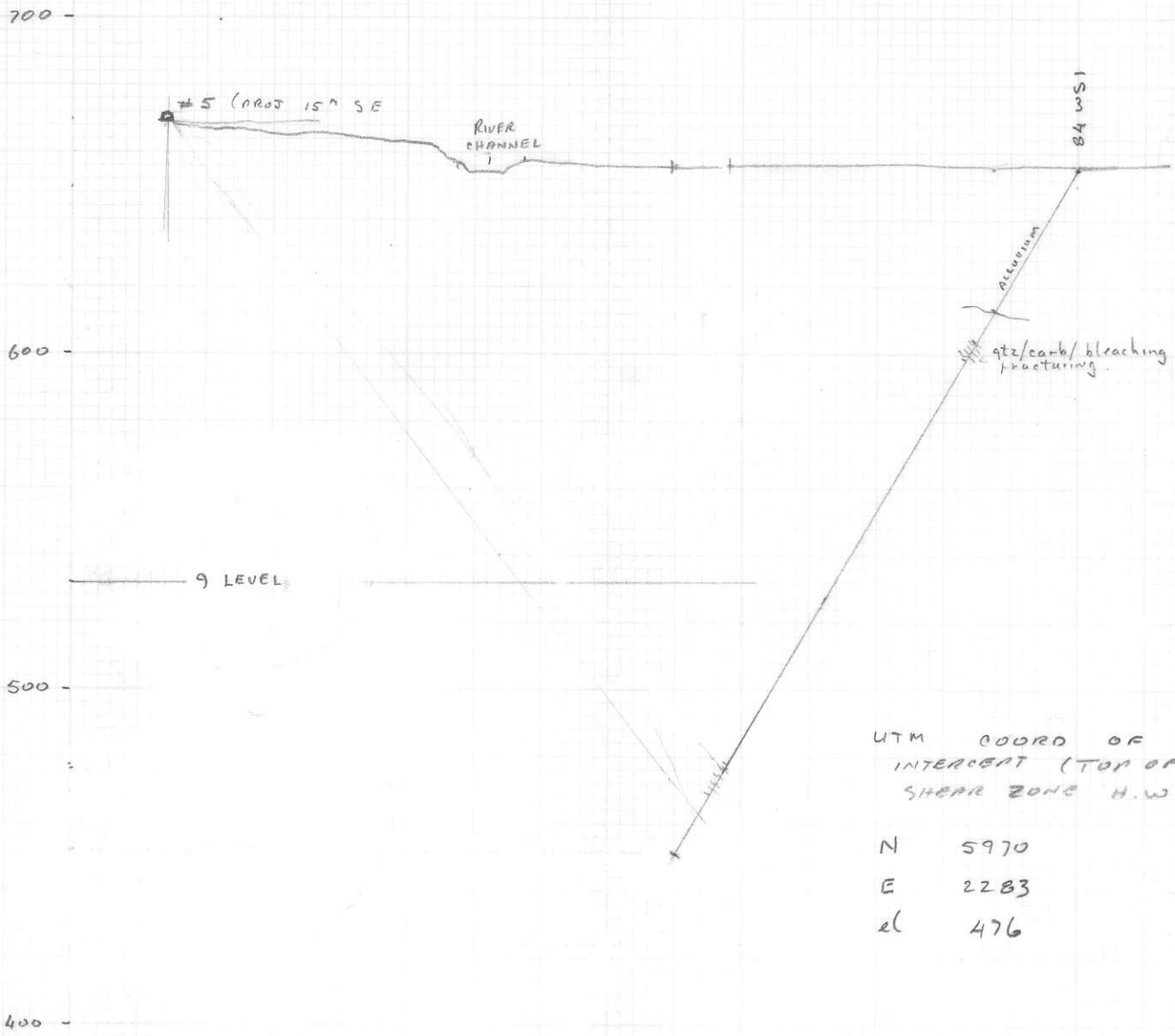
SCALE 1:2000

after Elwell '82
 Hole completed to 767'
 754 to 764 showed gty with mariposite
 avg .003 g/T.

THIS HOLE MAY NOT HAVE PENETRATED THE
 ZONE. CP. ADIT, LEVEL 0, WHERE HIGH GRADE
 QTZ IS ~15620^m W OF MARIPOSITE/QTZ SHEAR ZONE.

DDH 84-WS-1

SECTION LOOKING NW
along 240°
DH84WS-1 is



UTM COORD OF
INTERCEPT (TOP OF
SHEAR ZONE H.W.)

N 5970
E 2283
Z 476

NB - 60 ft to bedrock beneath river gravels.

SCALE 1:2000

DDH - 84-WS-1

Brg 240° - 60' 777'
Section looking NW along 240°

elevations are
corrected to Chev. Datum
LOCATIONS FROM H. A'EK' BU

2200
2197
2100
2000
2001
1900
1873
1800
1785
1700
1600

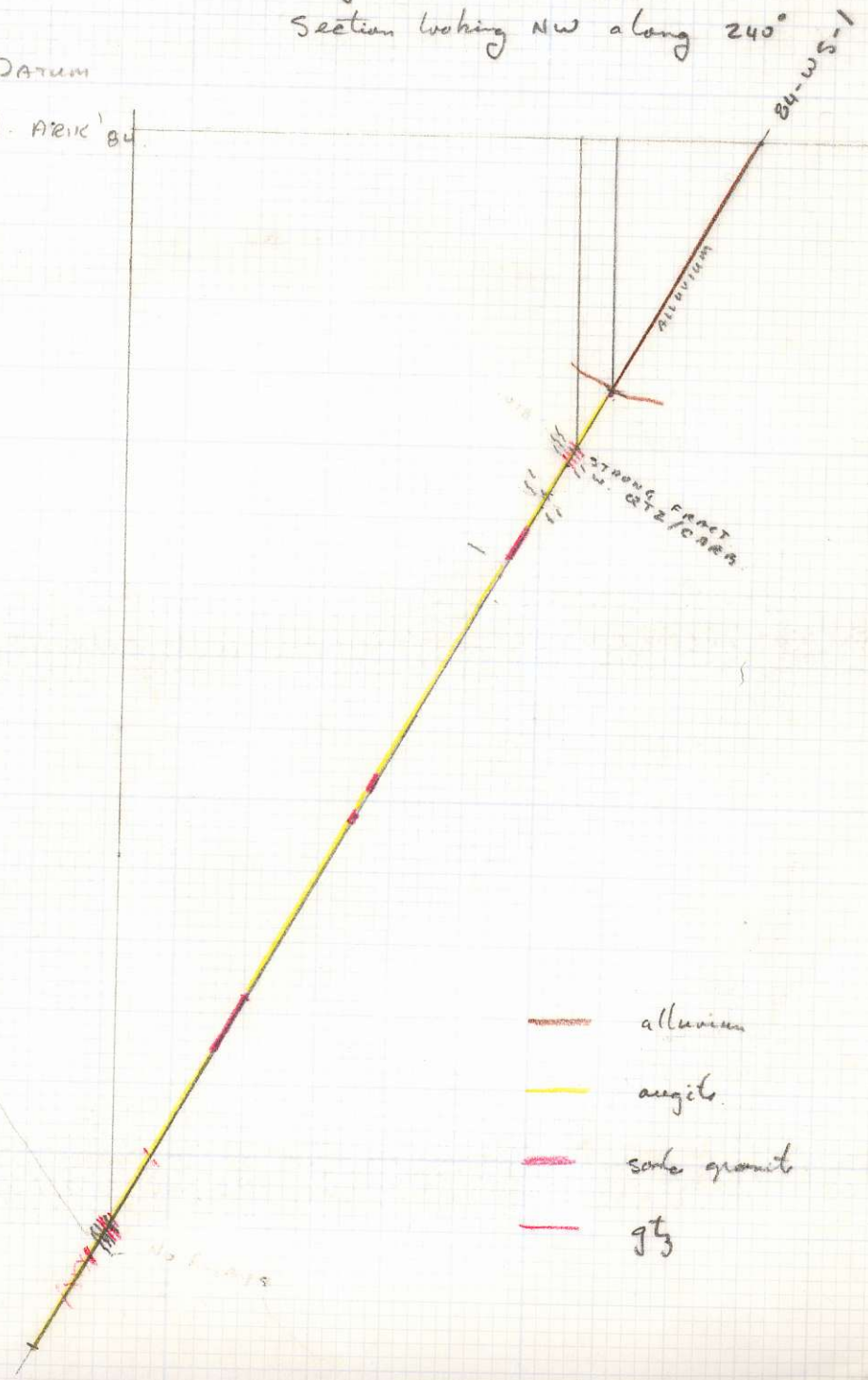
#5 (Pros)

#7 (Pros)

#8

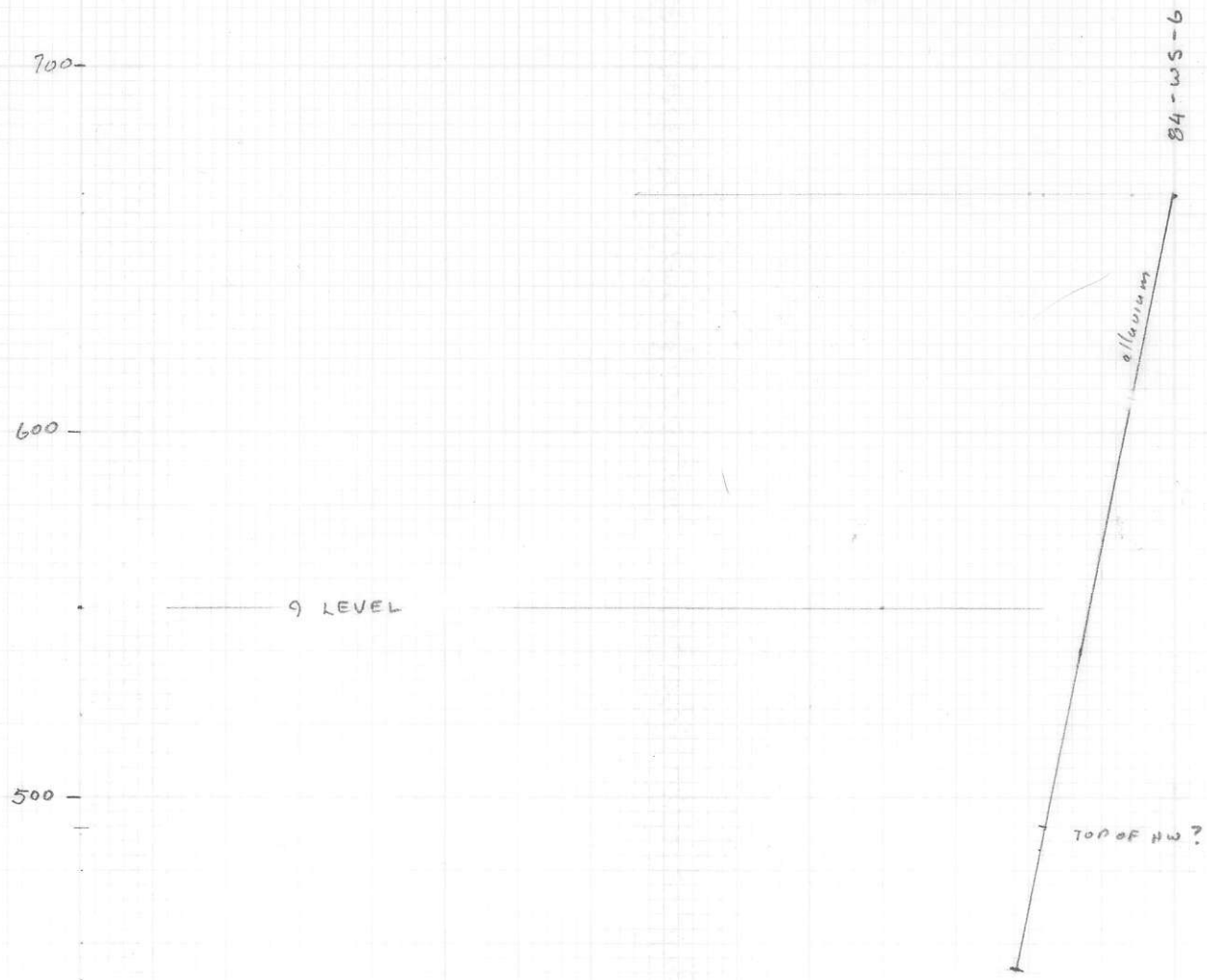
#9

UTM of



- alluvium
- argils
- scoria granite
- 95

WAYSIDE
DH 84WS-6 SECTION ALONG 213°
SECTION LOOKING NW.



UTM COORD. ON TOP OF
HW. :-

N 5979
E 2301
d. 492 m.

SCALE 1:2000

elevations are corrected to Chem. Datum
locations from H. ARK 1984

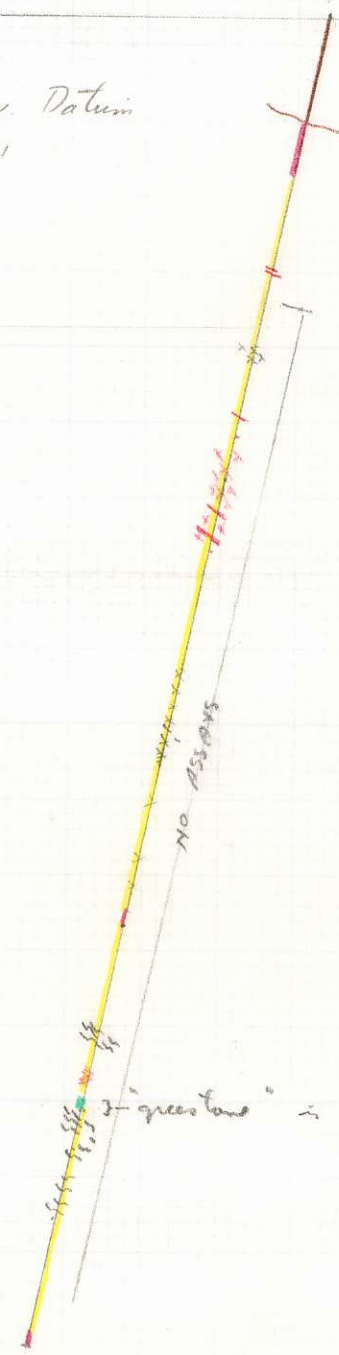
2200
2100
2000
1900
1800
1700
1600

#5

#7
(PROS)

#8

#9



"greenstone" in the Elwell's basement at 80-5-10

~ el.
2172
-78°

166 84-656

#9
LEVEL

old level x section
analytical -70 dip on vein
C #9 level.

926-9374

el. 1540.

-63°

-70°



60
180

FROM COLLAR OF WS-6

DRILL 258° -73°

Should hit previous intercept
of Waspids with Hole 79-10.

projected depth = 151m = 495 ft.

700

600

9 LEVEL

500

el of intercept on DDH 81-B-10

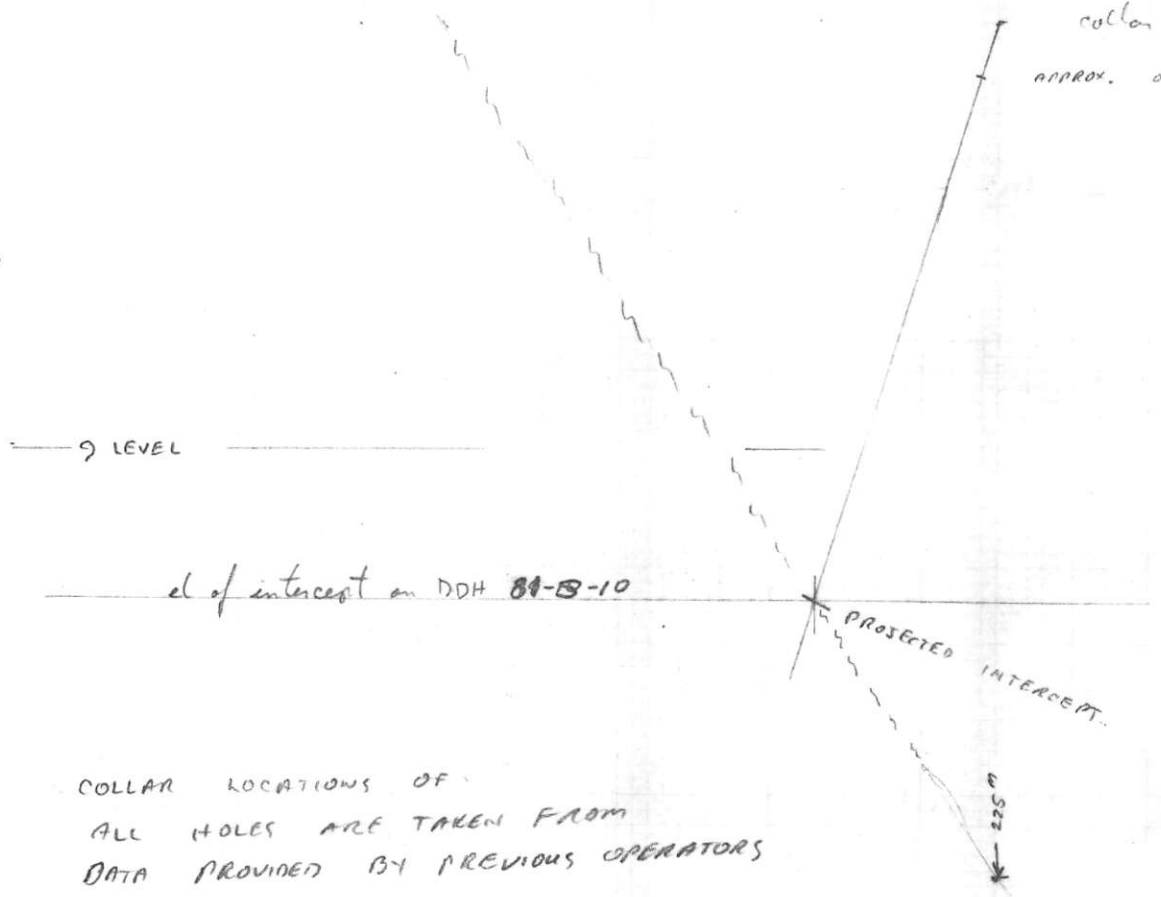
collar WS-6
APPROX. OVERBURDEN

PROJECTED INTERCEPT

225m

COLLAR LOCATIONS OF
ALL HOLES ARE TAKEN FROM
DATA PROVIDED BY PREVIOUS OPERATORS
ELEVATIONS FROM CHEVRON TOPOGRAPHY
AND CALCULATED INTERCEPTS.

WAD-87



A PROPOSED HOLE DRILLED $258^{\circ} - 73^{\circ}$
 SHOULD HIT THE PREVIOUS HIGRADE LOCATION
 AT 151' DEPTH.

SEVERAL HOLES COULD BE DRILLED FROM
 THE SAME SET UP TO TEST THE UP & DOWN
 PLUNGE DIRECTION OF A POTENTIAL ORE SHOOT.

PAXTON \rightarrow $\begin{cases} 79-37 \\ 79-38 \\ 79-39 \end{cases}$

12000 E

2305 CR. \rightarrow

Y1

Y150

Y2

Y3

Y4W

Y4

#5 Y

LOCATION OF
 10' OF $2.4602/T$
 (5' OF $4 * 02/T$)
 IN HOLE 81-S-10.

PROPOSED D. HOLE

84WS-6

81-S-11

81-S-10

36000 N

-60°

-55°

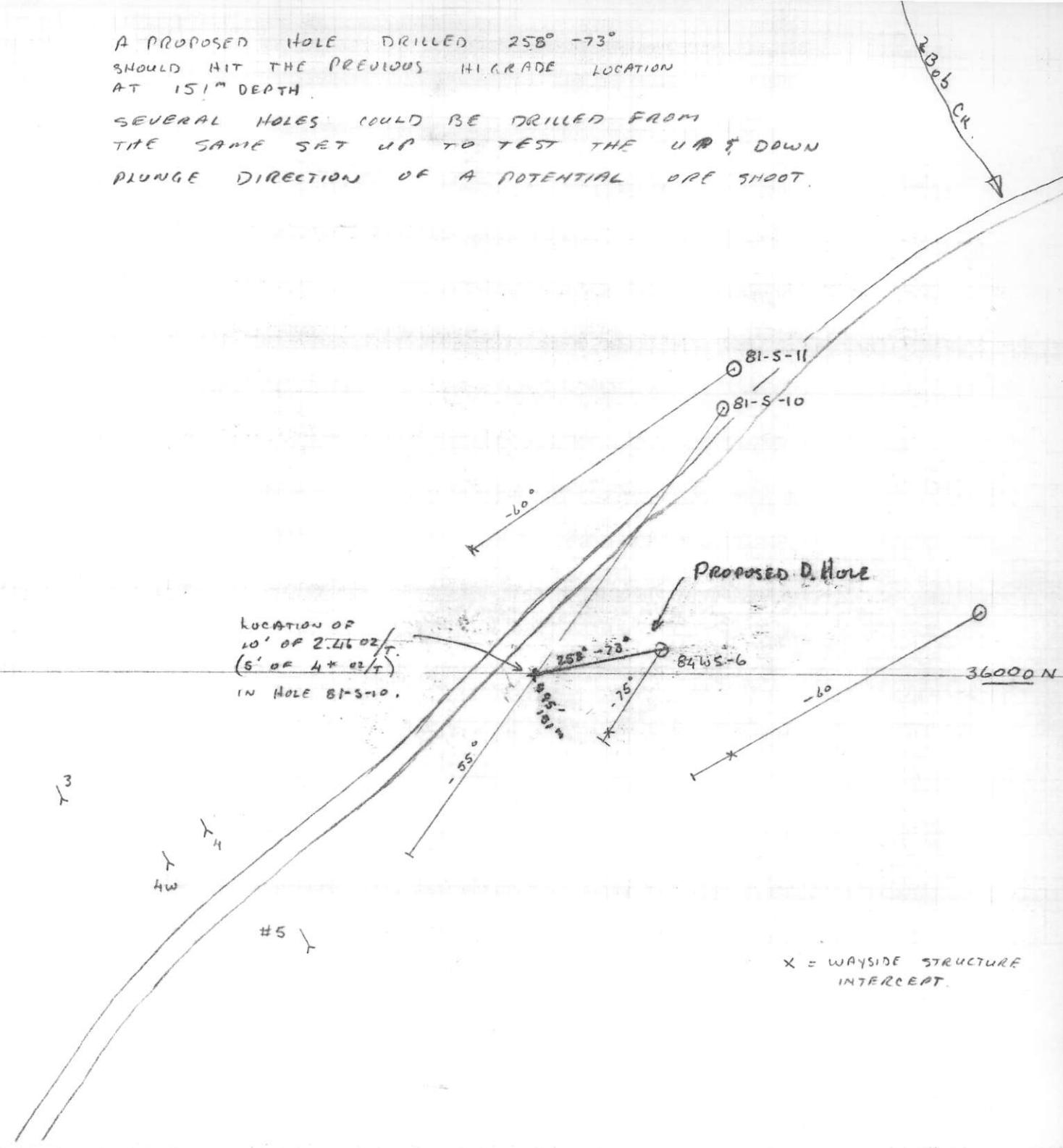
-75°

-60

$258^{\circ} - 73^{\circ}$

895' 814"

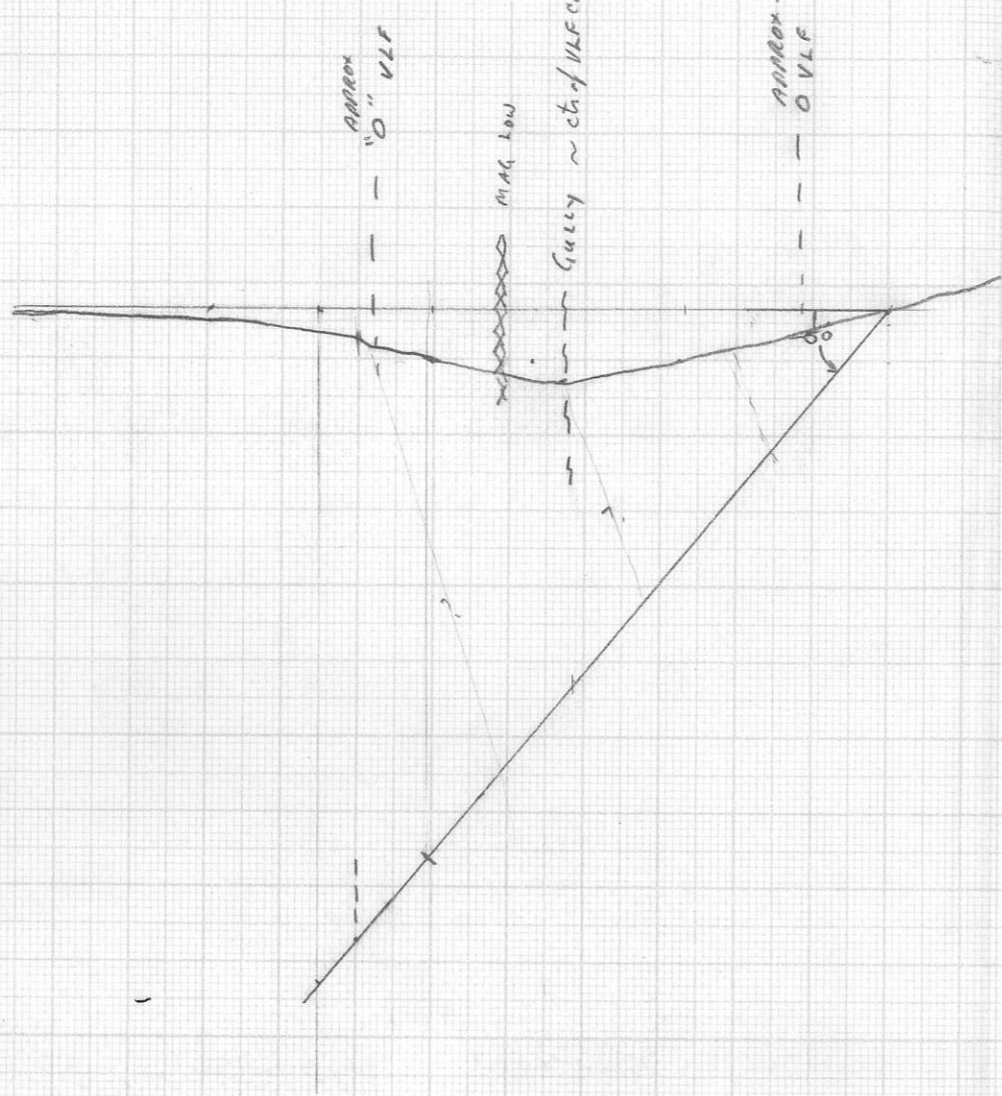
X = WAYSIDE STRUCTURE
 INTERCEPT.



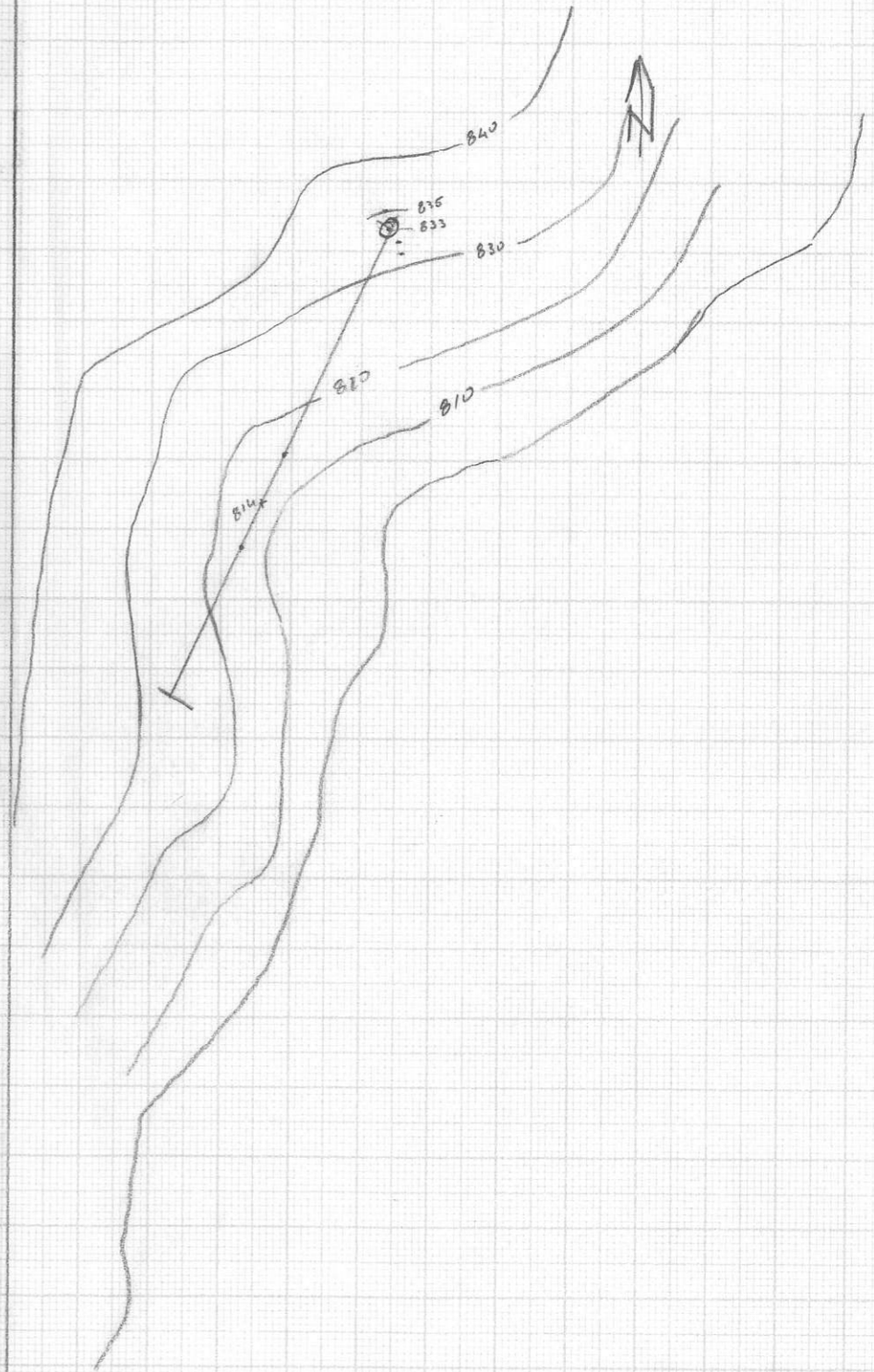
DDH 87-3 (Mannors)

SECTION ALONG 205°
LOOKING N.W.

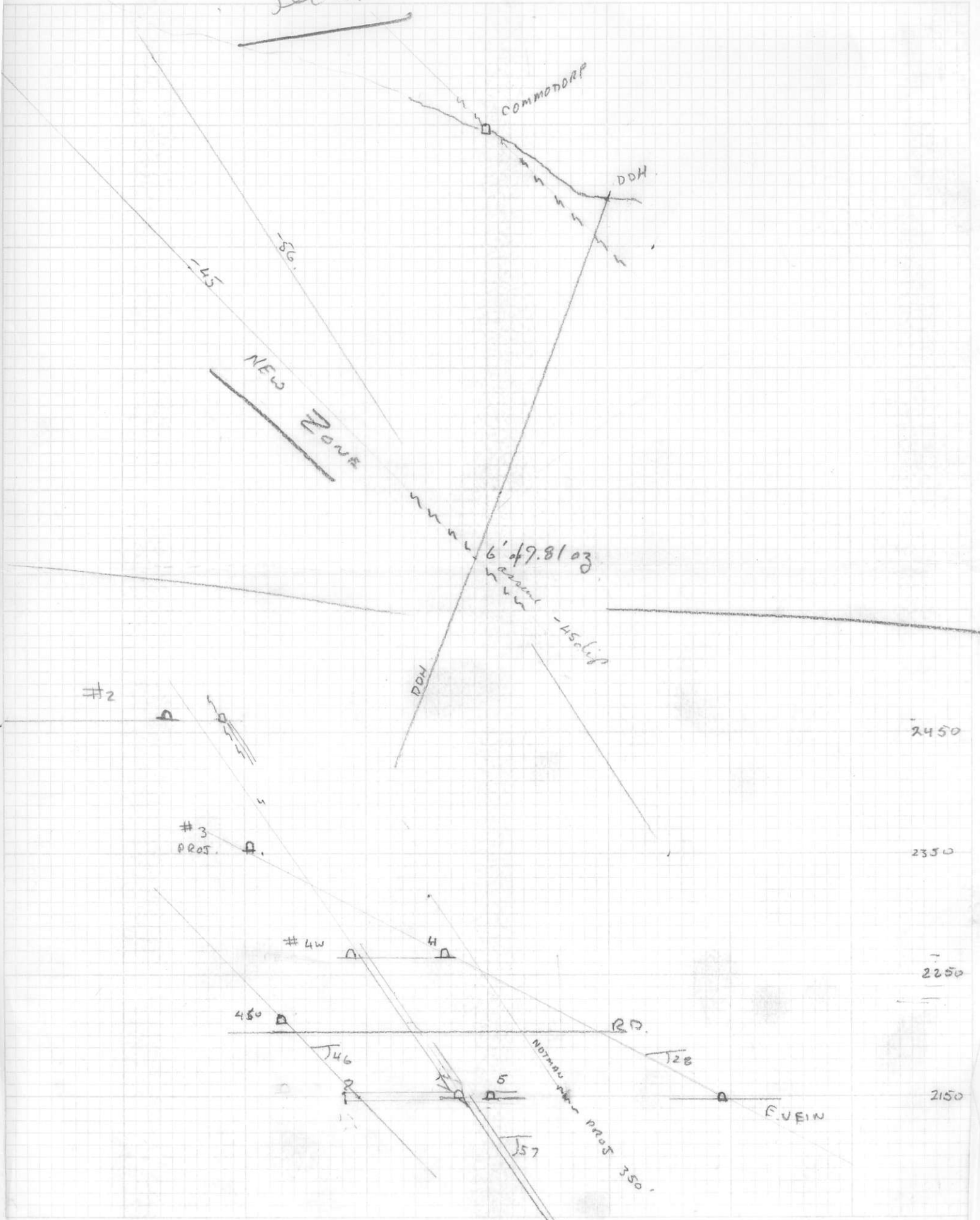
AZ - 205° } Pulled
Dip - 52 }
50° - plotted



860
840
820
800
780
760
740
720
700
680
660
640



Section 2



A PROPOSED HOLE DRILLED $258^{\circ} - 73^{\circ}$
 SHOULD HIT THE PREVIOUS HIGH GRADE LOCATION
 AT 15' DEPTH.

SEVERAL HOLES COULD BE DRILLED FROM
 THE SAME SET UP TO TEST THE UP & DOWN
 PLUNGE DIRECTION OF A POTENTIAL ORE SHOOT.

PAXTON \rightarrow $\begin{cases} 79-37 \\ 79-38 \\ 79-39 \end{cases}$

12000 E

2300 CR.

Y1

Y150

Y2

Y3

Y4W

Y4

#5

LOCATION OF
 10' OF 2.4602/T
 (5' OF 4*02/T)
 IN HOLE 81-S-10.

PROPOSED D. HOLE

$258^{\circ} - 73^{\circ}$

84WS-6

81-S-11

81-S-10

36000 N

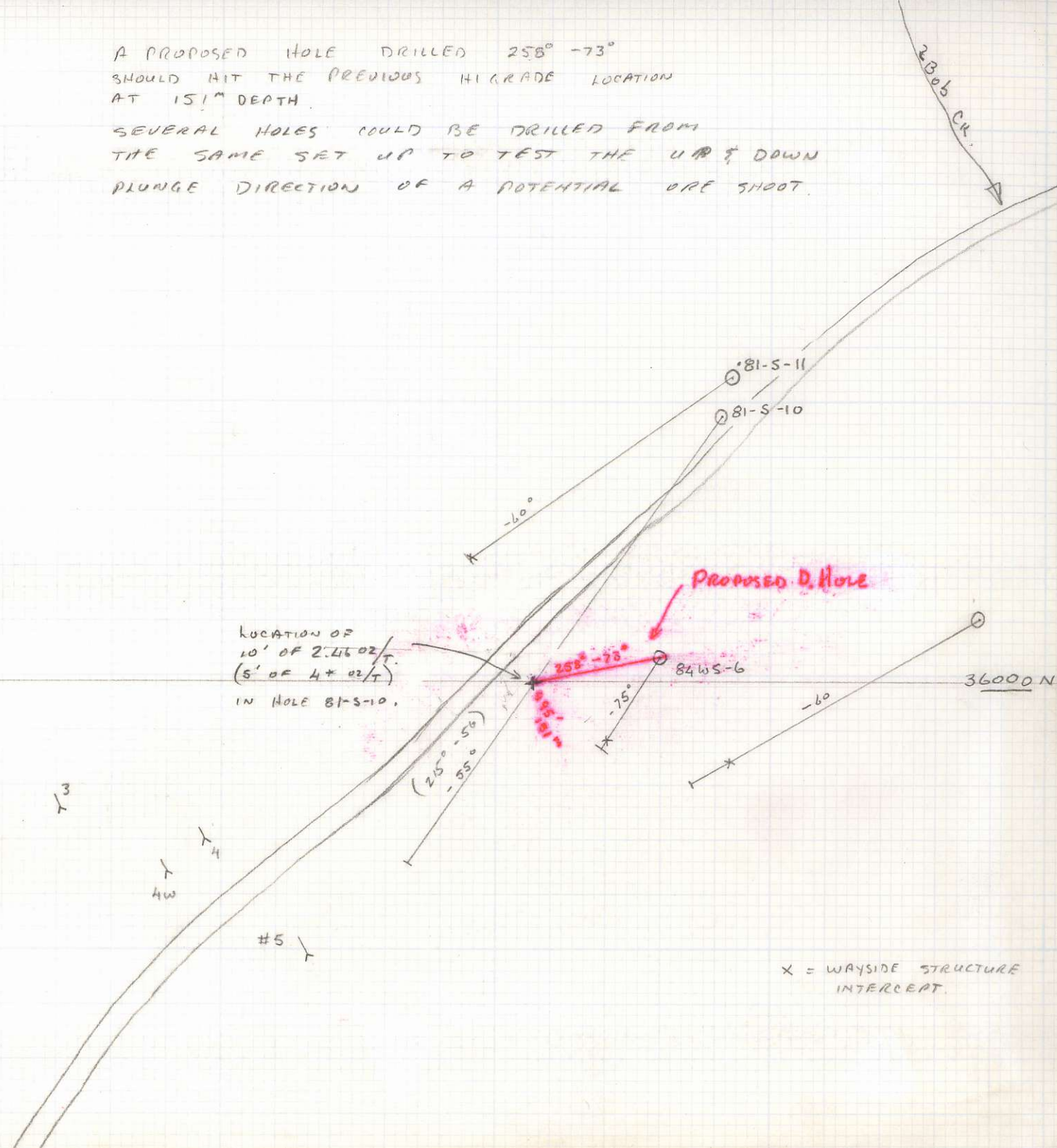
-60°

-75°

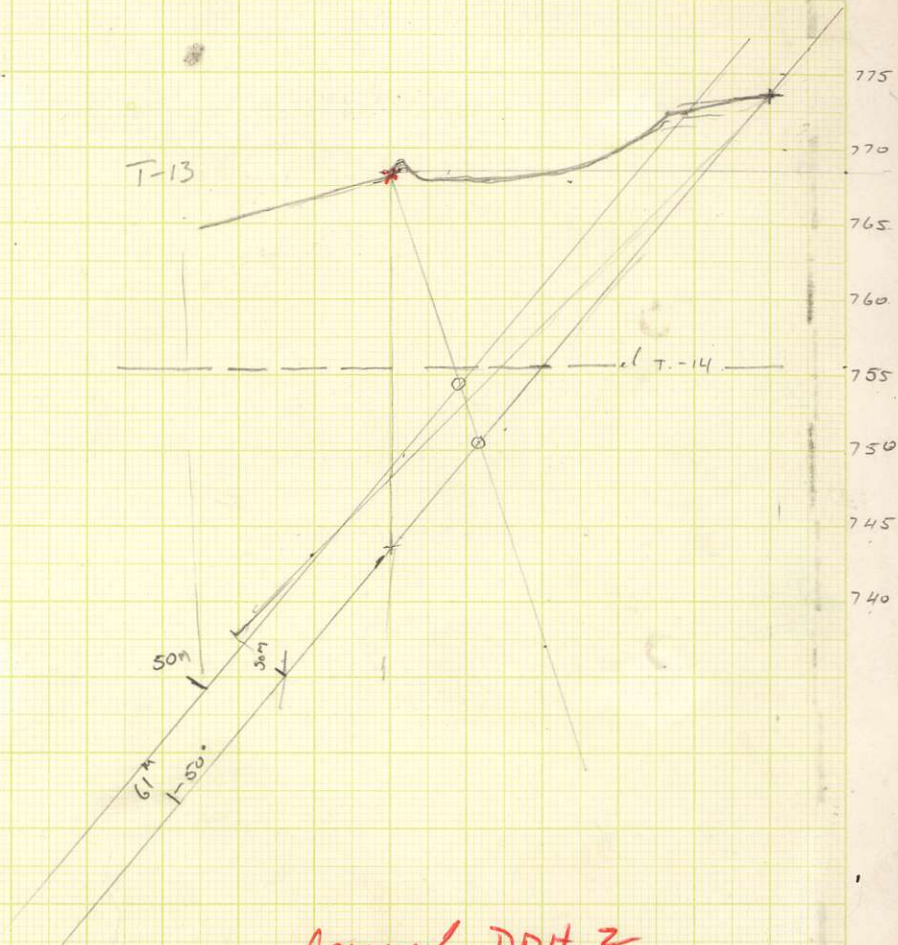
-60

$(215^{\circ} - 56^{\circ})$
 -85°

X = WAYSIDE STRUCTURE
 INTERCEPT.



12.2
787.2
799.4



Assumed DDH 2

2-BOB CK AREA

220° - 50°

~ 150 FT T.D.



340°

670
512
158 m

DH 10 intercept

UTM
5998 N
2213 E
el 512 m

WS 6

Proposed New
collar basin
(underwater)

el 670 5984 N
2217 E

5984 N

New collar c

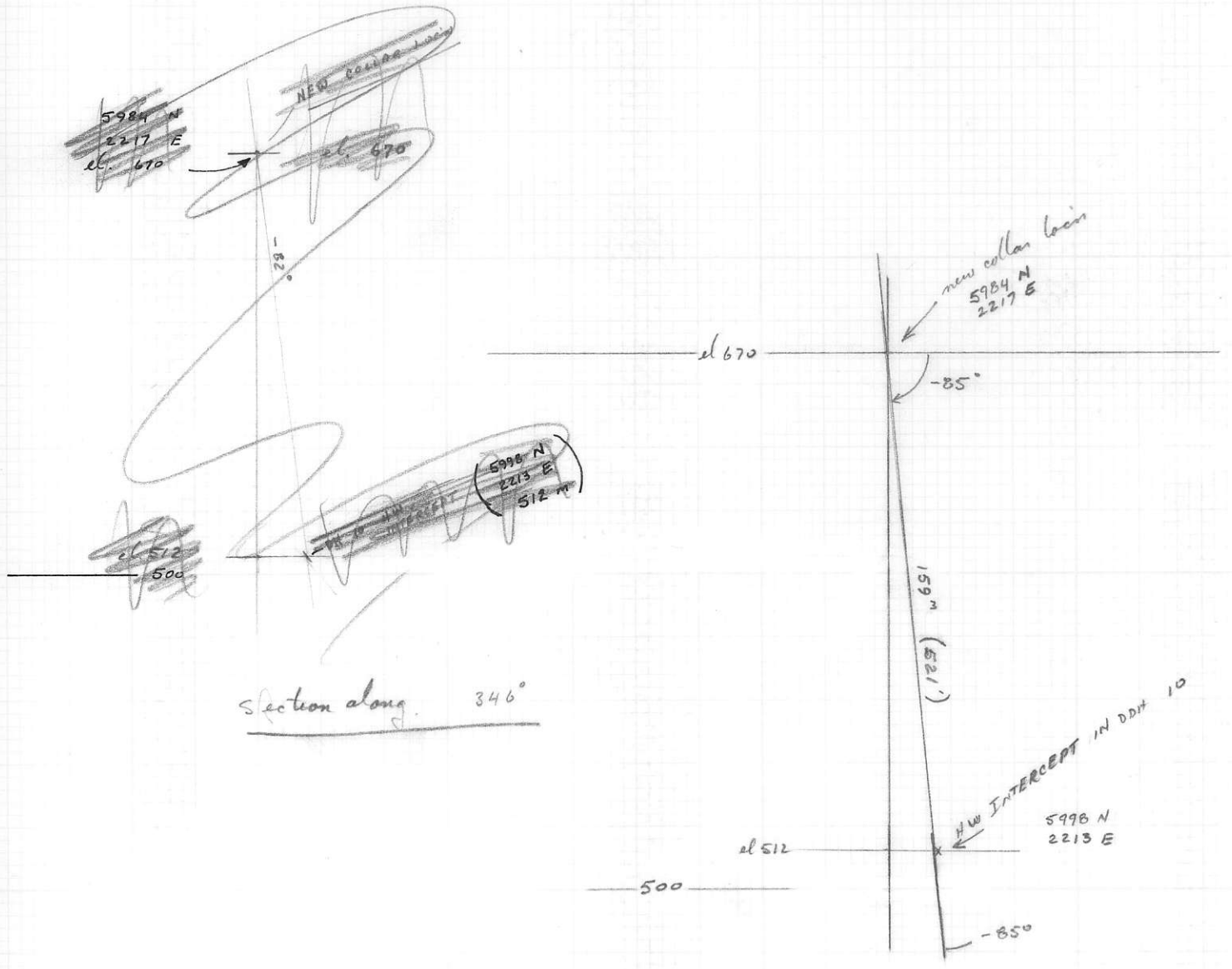
potential
new collar locations

120 m
#5 portal



PROPOSED DDI#
 from bench @ #5 portal level
 to Intercept of Q2 vein with Hole 84-10

SECTION ALONG 346°



section along 346°

New Hole 346° -85° 160°

$\Delta 10^\circ = 100'$

1:2000

#5 PORTAL
Hole 87-1 AZ 212
Dip -53°

87-1

853'

800'

212

-50°

117 m
(383.85')

80-10

50

174 m
(539.86')

87-1

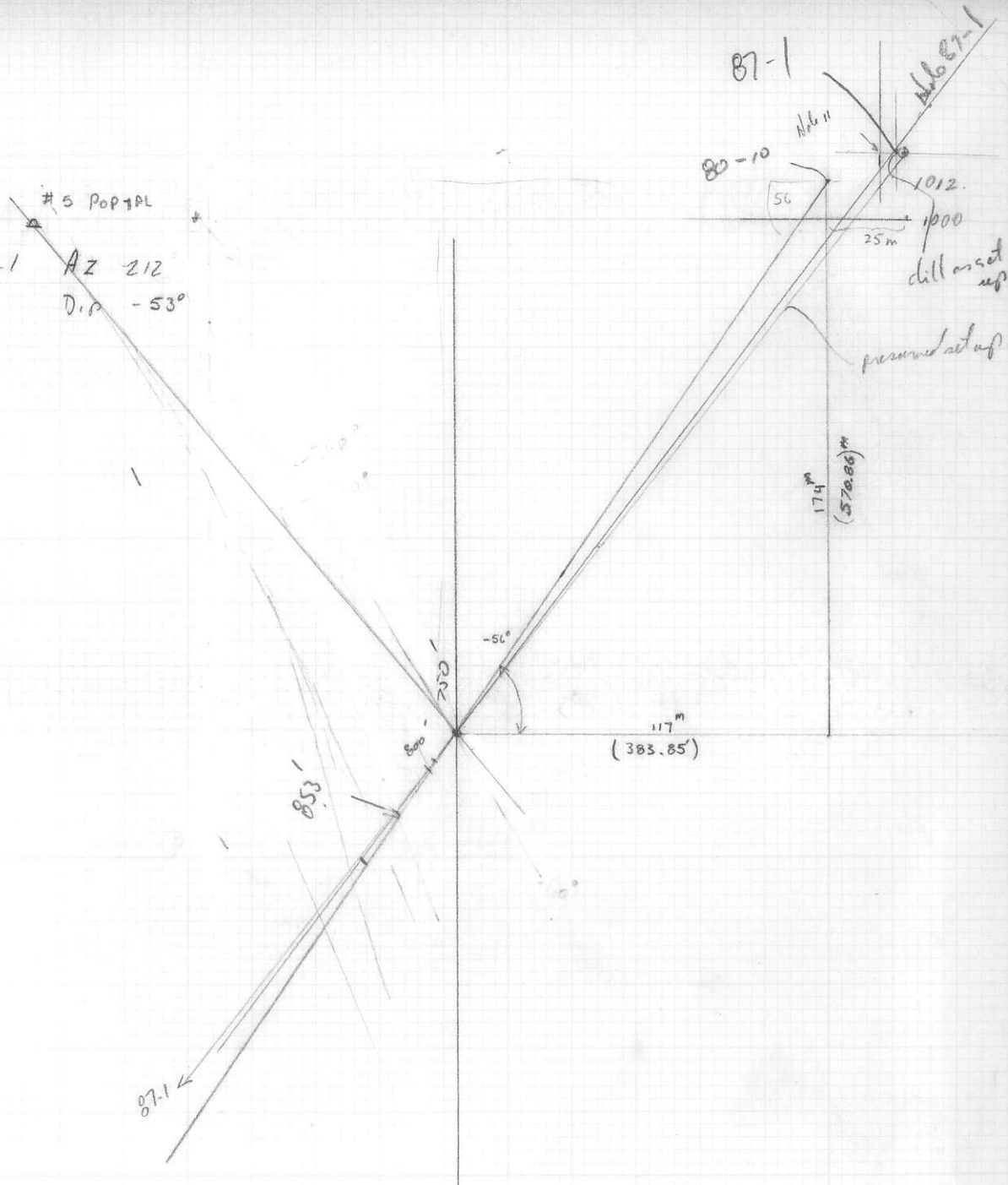
1012

25 m

ditch on set up

pressure set up

DDH 10
SECTION



Hole 75-A-1 ~~74~~ collar locn is ^(20.4") 67' long 190' from
bend of Power line.

Hole AZ = 230° -74°

76-83 .955

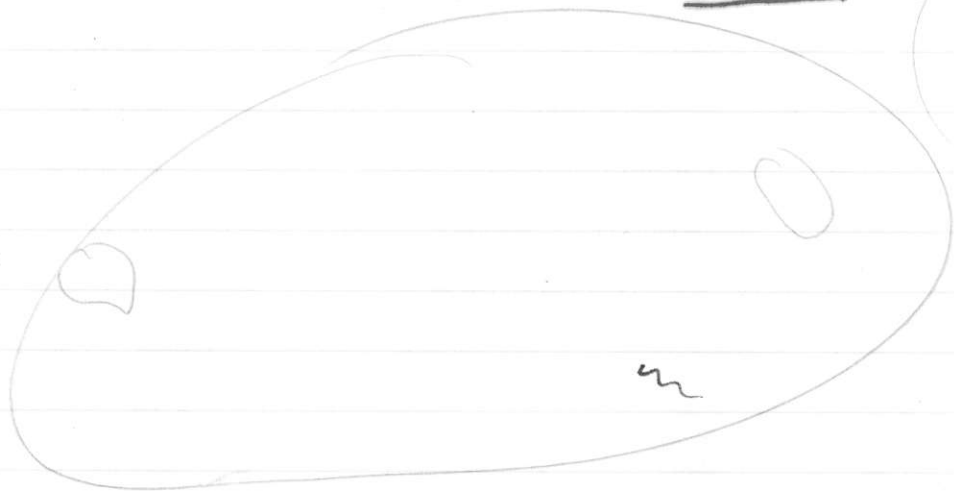
Hole 75-A-3 collar locn is
Hole Bearing 215° -60°

Hole 75-A-5 collar locn is ?

Hole Bearing 220° -70°

130-133 (3')

19.615 oz/Ton



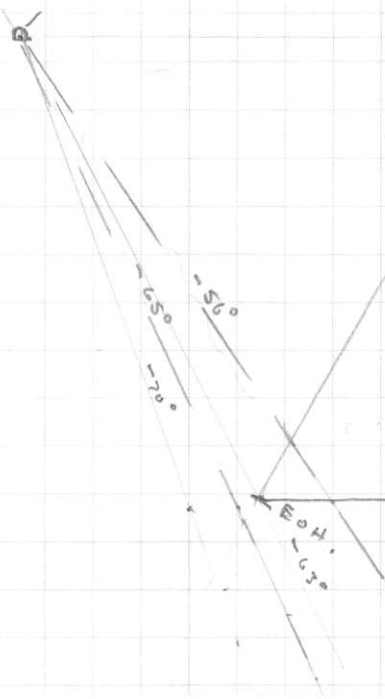
1" = 100'

el.
2168

check
#9 el

#9 LEVEL

x section by
oct 75 indicates
dip has steepened to $\sim 70^\circ$
in #9 level.



1968

1860

1768

1068

1568

1490

from H. A. R. K.

84-WS-1

685-705

to Verify Main Waypoint shear zone.
mineralized shear zone. (Q. is this the "Notman")

NB- No ASSAYS FOR MAIN SHEAR INTERSECTION

84-WS-6

weak mineral "20' away from rich zone" in 80-S-10.

84-C-8

84-C-9

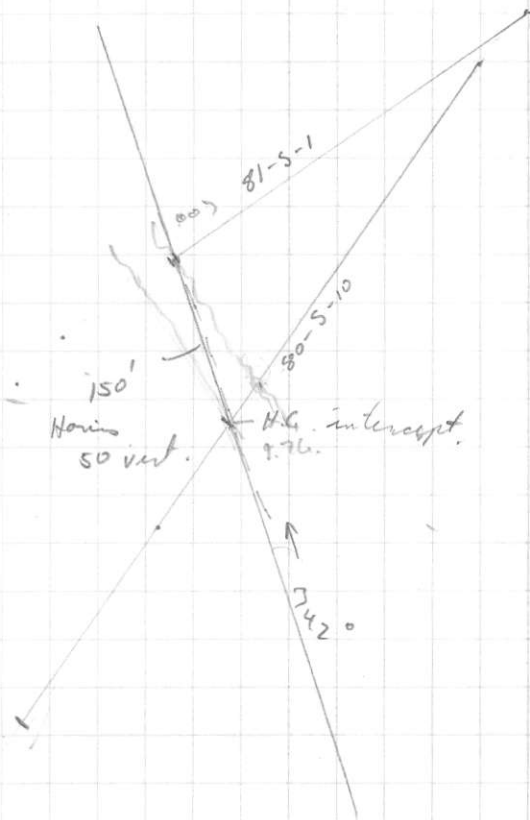
drilled an Comstock system (? loc'n.

84-D-4

is "stockworked" Argill. diorite

1:2000

Horis Plat.
Hals 80-5-10
81-5-1



1:2000

Vent Spec

Hubs

80 - S 10
81 - S - 11

el. 680'
≈ 2231'

#9 LEVEL

50 vent.

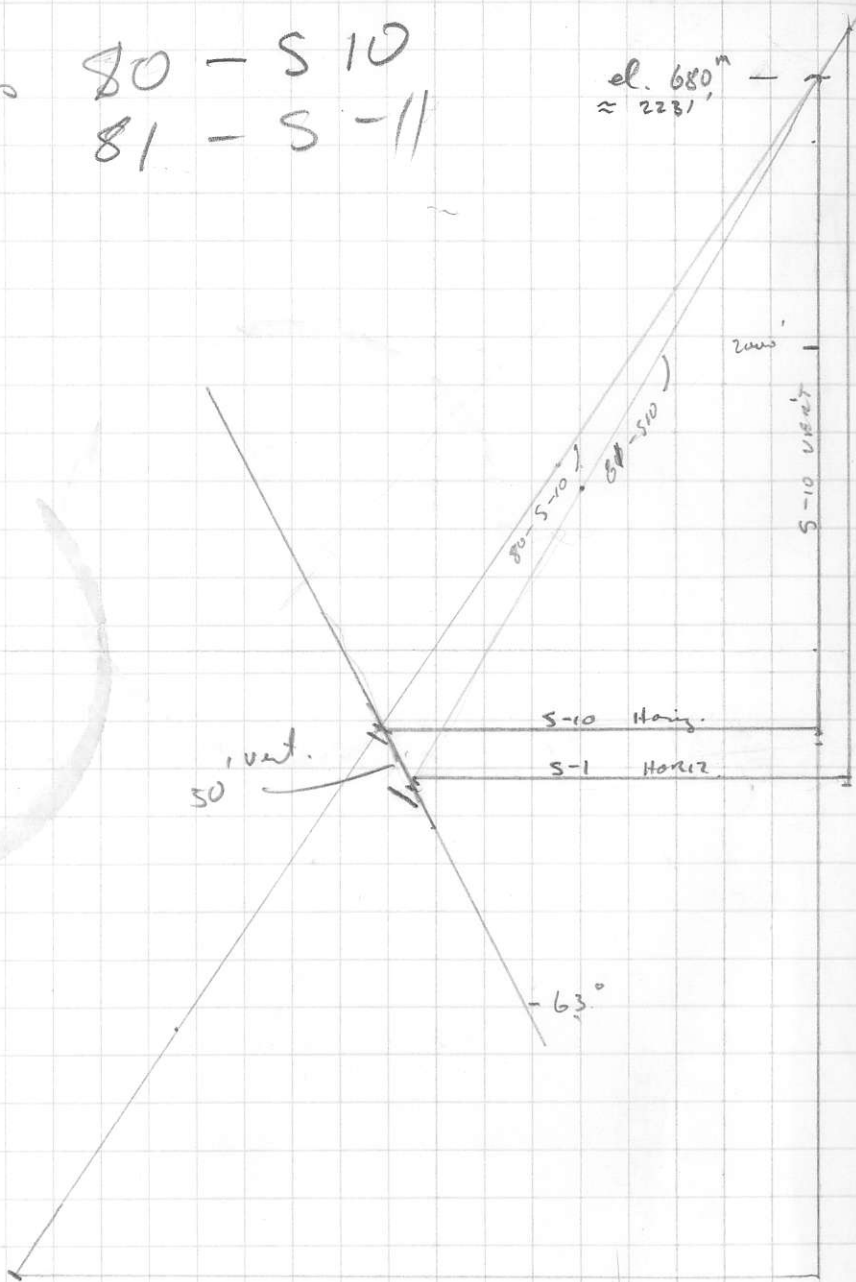
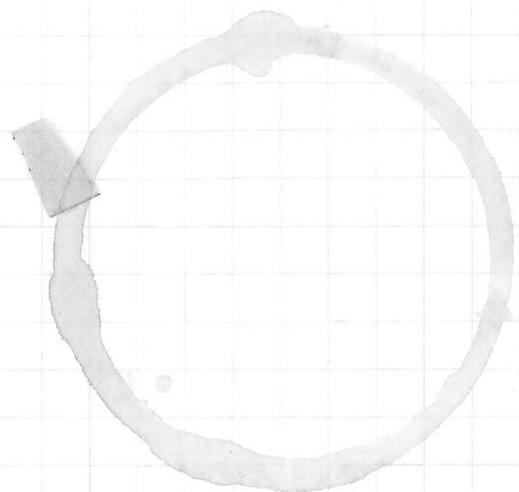
S-10 Horiz.

S-1 Horiz.

-63°

2000'

S-10 VENT



*

87-1 $A_s = 212.0^\circ$
dip 53.0°

intersect hanging wall
contact at $230\text{ m} = \underline{\underline{754.6\text{ ft}}}$

DDH 87-1
Set up.

87-1
DDH-11

DDH-10 d. 1012.31 m

6096 N
162

2283 E.
120

5934 N

2163 E

685' = 208.79'

#5
cored 1000.0 m

DDH 10 - 214

5934 N
2163 E

120 m

191.5 m

PLAN.