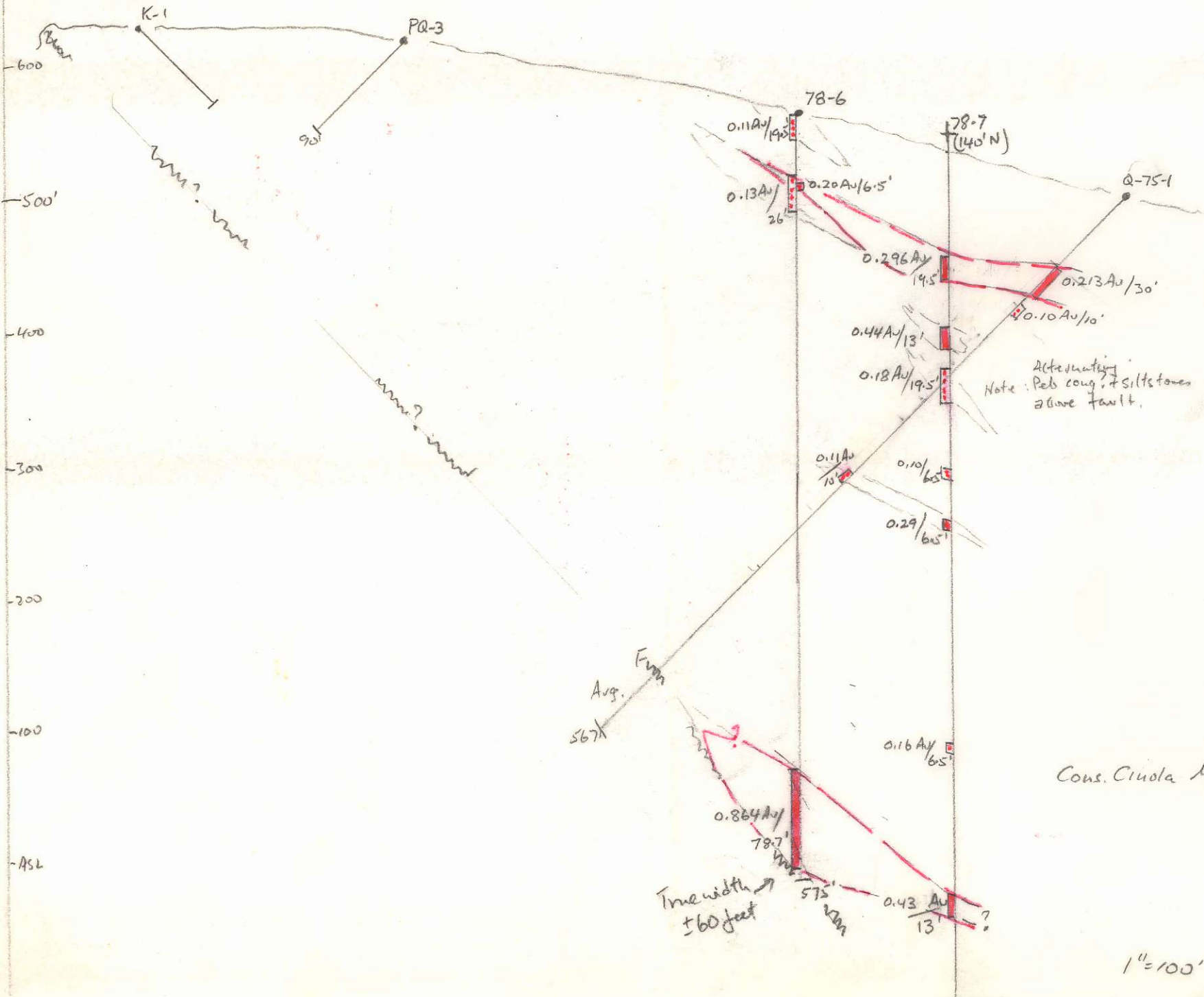


700' ASL
600
500'
400
300
200
100
ASL



From
Avg.
567x

True width
±60 feet

Note: Alternating
Peb. cong. & siltstones
above fault.

Cons. Cinola Mines

1" = 100'

840498
Cons. Cinola
103F/9

689' End hole.

Continued
72-1

V20
Masset

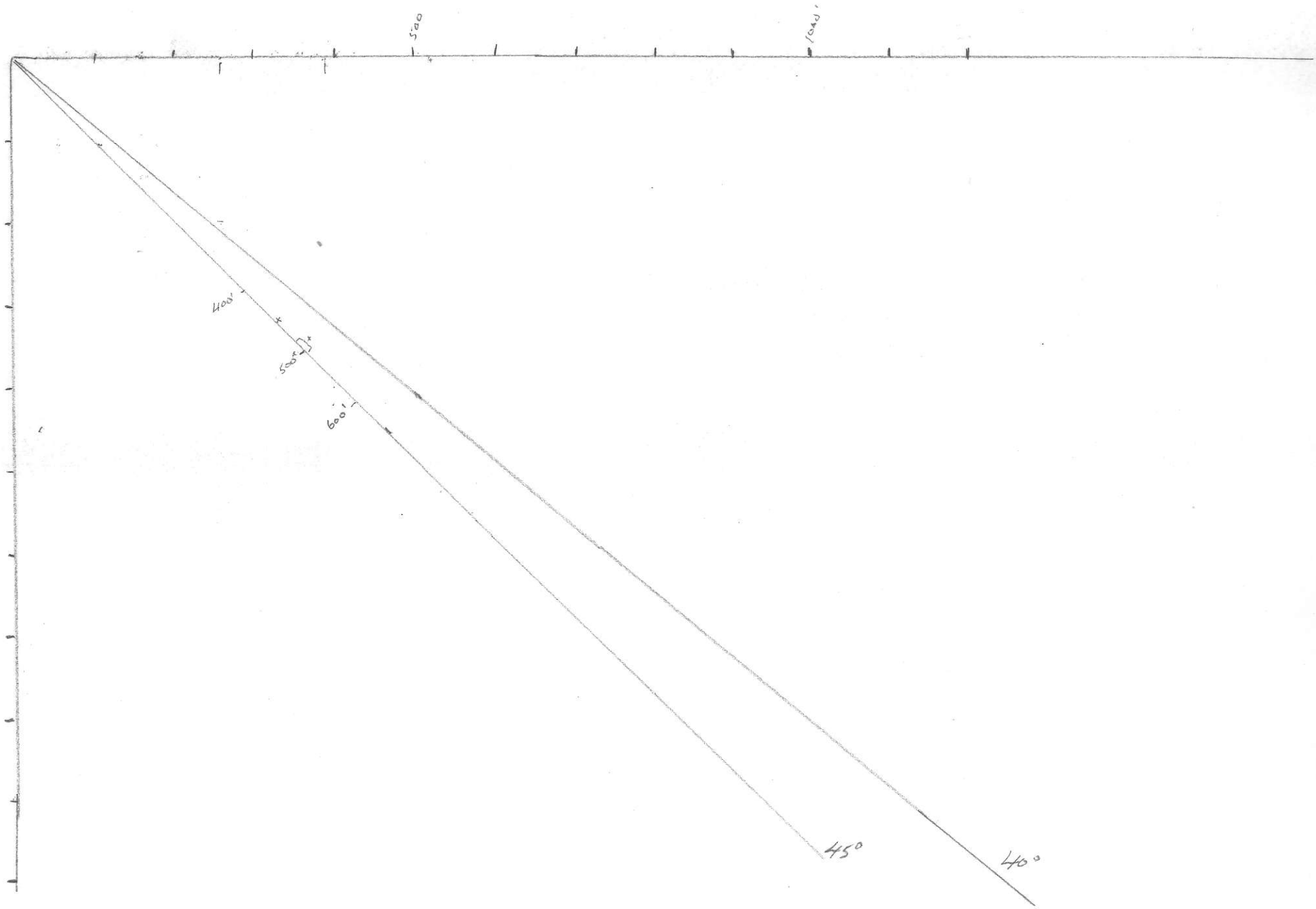
0.12 A
751

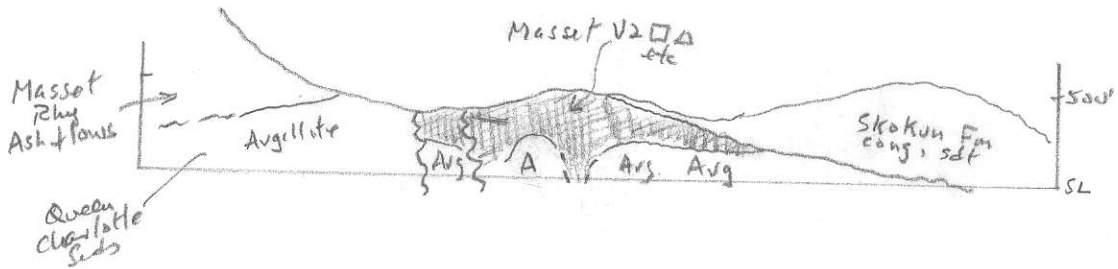
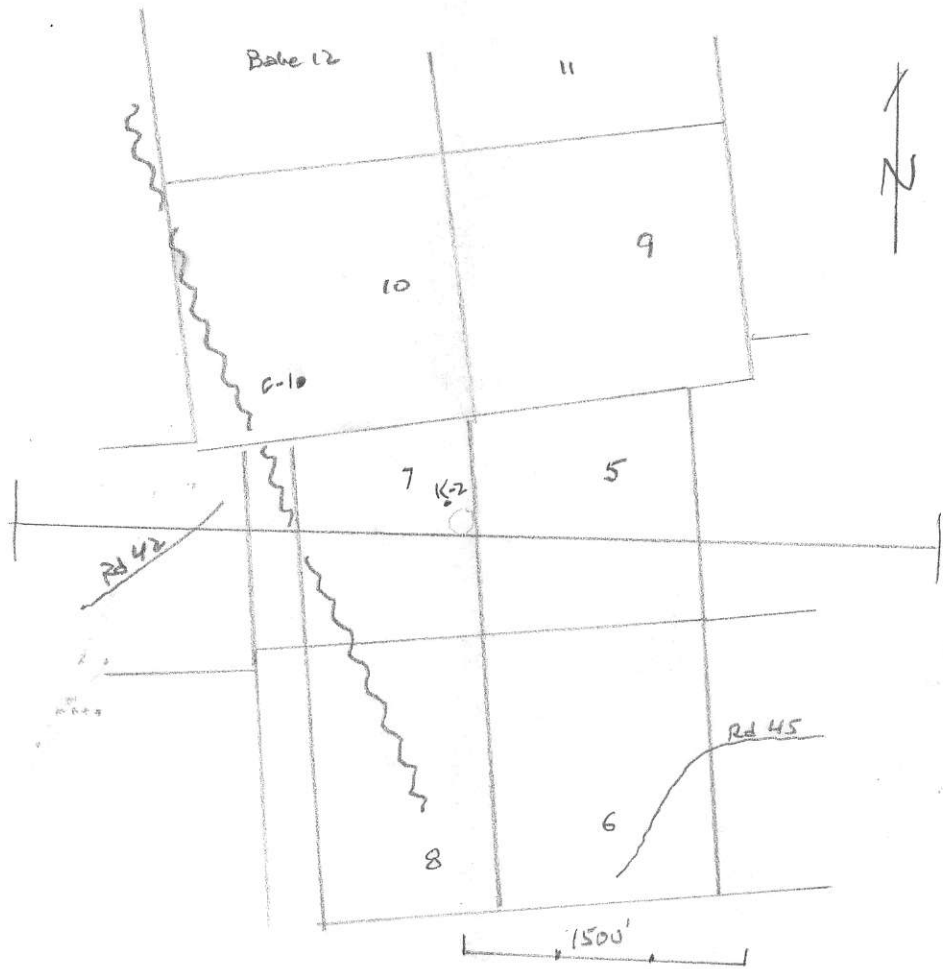
0.30 A
20

Siltstone

V20





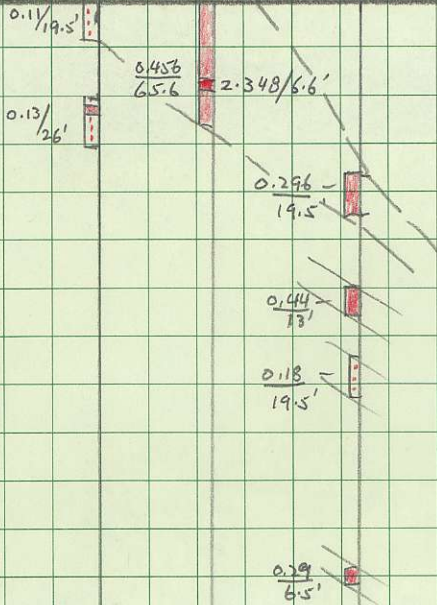


Cinola

update Apr 9/79

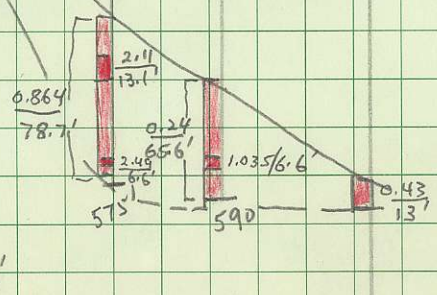
→ North

(cont) 79-1 (50' W) 78-6 (cont) 79-2 (50' E) 78-7



(0.788 Au / 6.6')
 → 0.296 Au / 26.3'

Average	79-1	0.296 Au / 26'
	78-6	0.864 Au / 78'
	79-2	0.24 Au / 66'
	78-7	0.43 Au / 13'
		183
Avg.		0.53 Au / 45.7'



616'

23

NO. L16-190-4A GRAND & TOY 4 SQUARES TO THE INCH