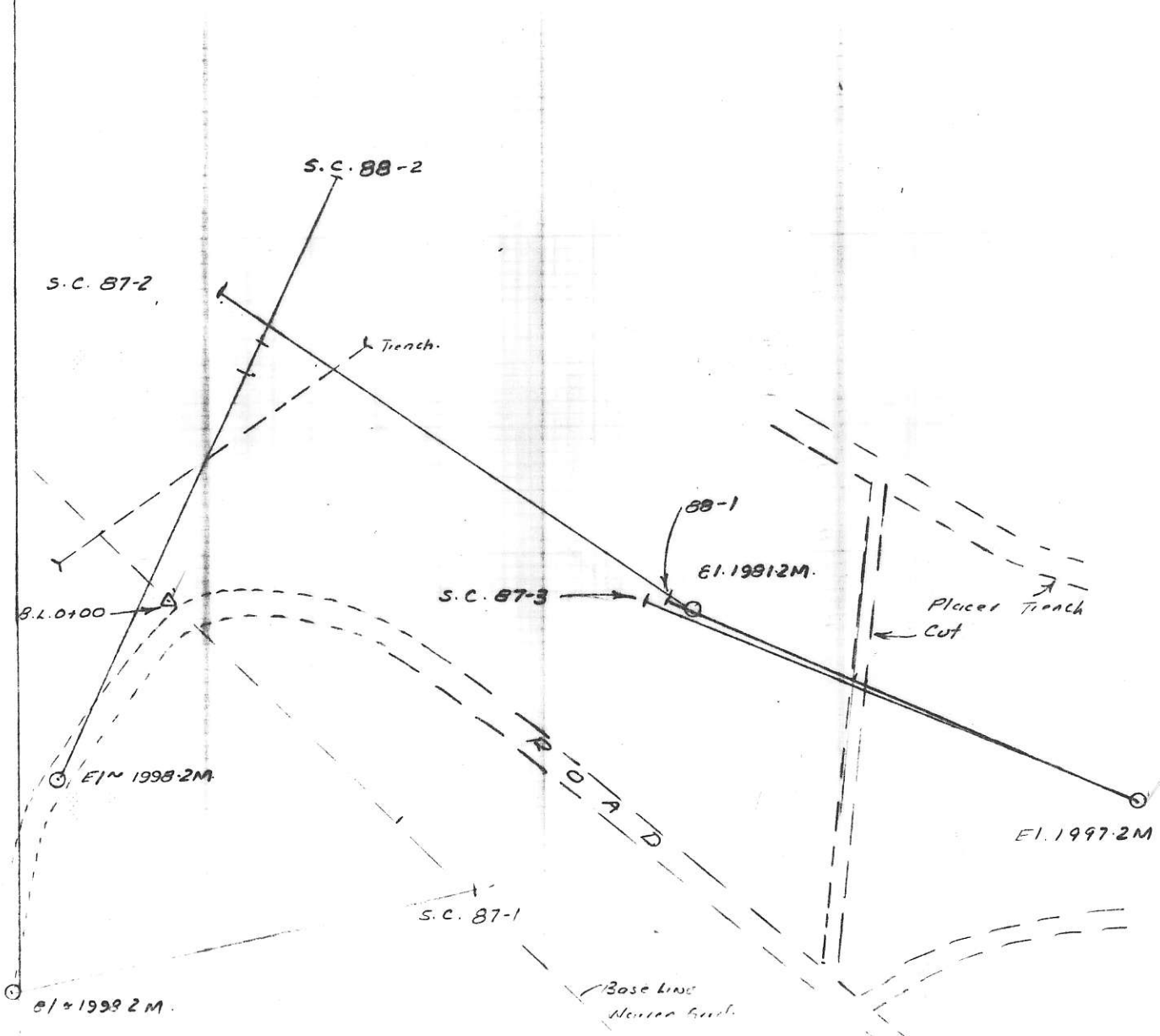


HOLE	AZ	AVE D/D
S.C. 87-1	078	-49°
S.C. 87-2	305°	" -46°
S.C. 87-3	293°	" -46°
S.C. 87-A	079°	" -47½°
S.C. 88-1	294°	" -66°
S.C. 88-2	024½°	" -63°



CHEVRON MINERALS LIMITED
 WARREN OPTION - M594.
 STIRRON CREEK
 Sketch showing location of
 1989 drill holes
 Scale 1:1000. Oct/99

NOTE Survey by Compass & Nylon Chain
 Elevations are approximate

840471