

840468

ASSESSMENT REPORT

ON

ASTONISHER C.G.; AJAX C.G.
MONITER C.G.; MONTY C.G.
CHEVALIER C.G.; SUN FRACTION C.G.

AND

W1 TO W18 AND LAST CHANCE
MINERAL CLAIMS

N.T.S. 92-0-1

LONG.-122°12' Lat.-51°08'

BY

T.E. LISLE, B.Sc., P. ENG

FOR

CHEVRON STANDARD LIMITED
MINERALS STAFF

PROJECT FILE

Vancouver, B.C.
October 8, 1975

T A B L E O F C O N T E N T S

| | <u>Page No.</u> |
|-----------------|-----------------|
| 1. Introduction | 1 |
| 2. Core Storage | 1 |

ILLUSTRATIONS:

- Figure (1) General Location Map
Figure (2) Detailed Location Map

APPENDICES:

- (1) Diamond Drill Log
(2) Statement of Costs
(3) Statement of Qualifications

INTRODUCTION:

A two-hole drilling program was commenced at the Stirrup Creek property on September 12, 1975 and continued to October 2, 1975.

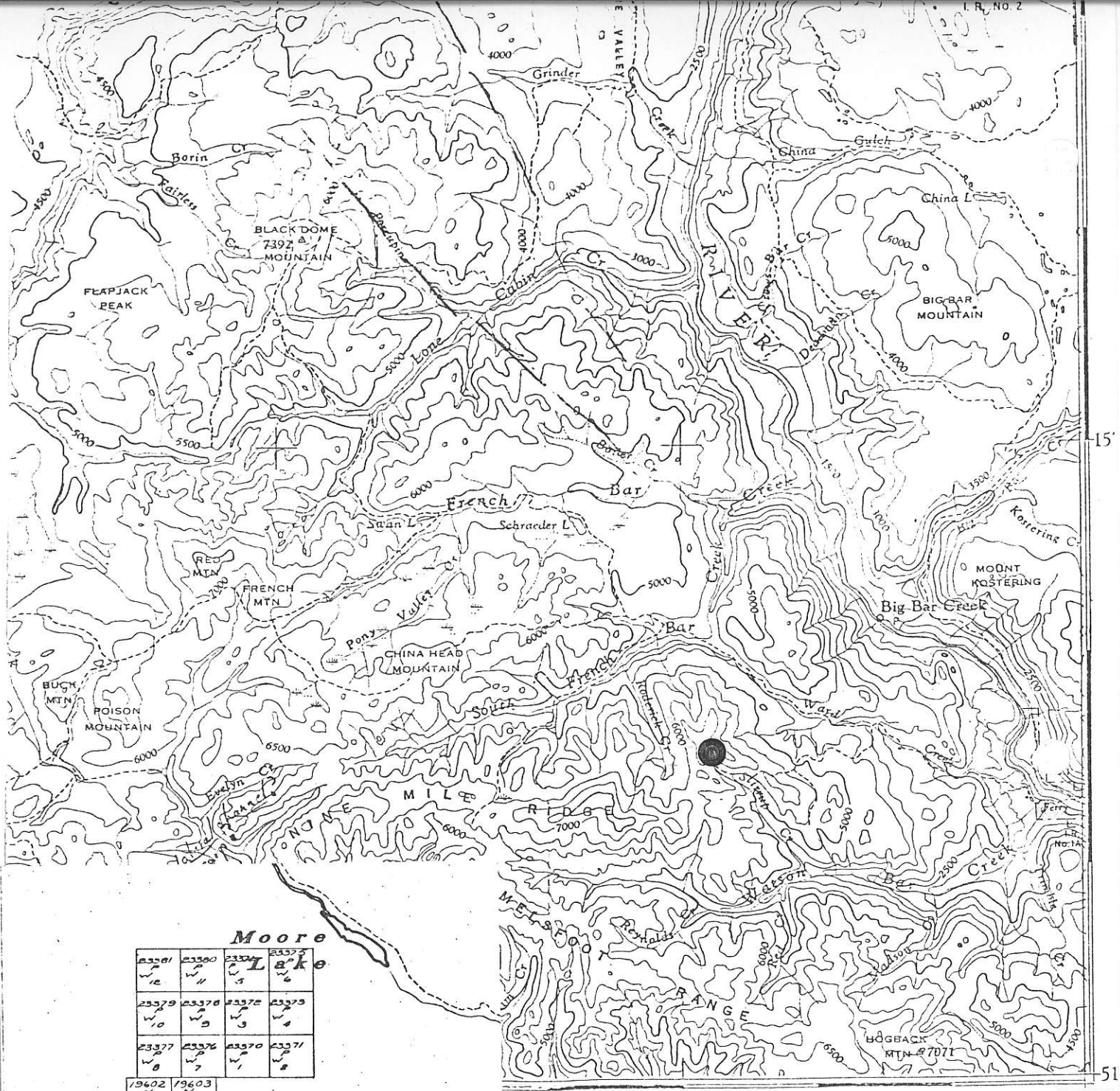
Two 300-foot vertical drill holes were completed to test surface exposure at depth. The location of the holes is shown on the enclosed map.

Drill Hole 75-C-1 is collared at approximate elevation of 6,475 feet and 75-C-2 at approximately 6,500 feet.

CORE STORAGE:

The core is temporarily stored at 145 West Rockland Avenue, North Vancouver, B.C. It will be probably be forwarded to the residence of Dr. H.V. Warren at 1816 Western Parkway, Vancouver, B.C.

J. E. Gault



Moore

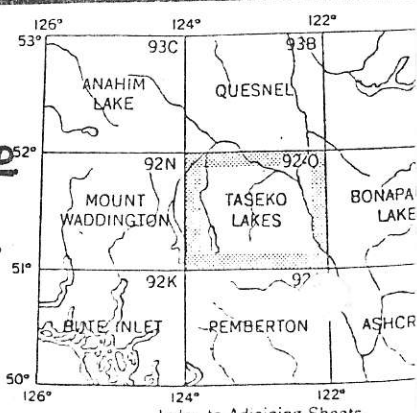
| | | | | |
|---------------|---------------|---------------|--------------|--------------|
| 23371 W 12 | 23390 W 11 | 23379 W 10 | 23378 W 9 | 23375 W 8 |
| 23377 W 8 | 23376 W 7 | 23370 W 7 | 23371 W 8 | |

| | | | | |
|--------------|--------------|--------------|--------------|--------------|
| 19593 G 8 | 19594 G 8 | 19401 G 8 | 19604 G 8 | 19605 G 8 |
| 19336 L 7 | 7982 C 6 | 7981 C 6 | 7979 C 6 | 19607 N 5 |
| 19597 G 8 | 19598 G 8 | 19599 G 8 | 19600 G 8 | 19608 G 8 |
| 19599 G 8 | 19600 G 8 | 19611 G 8 | 19612 G 8 | 19613 G 8 |

LOCATION MAP

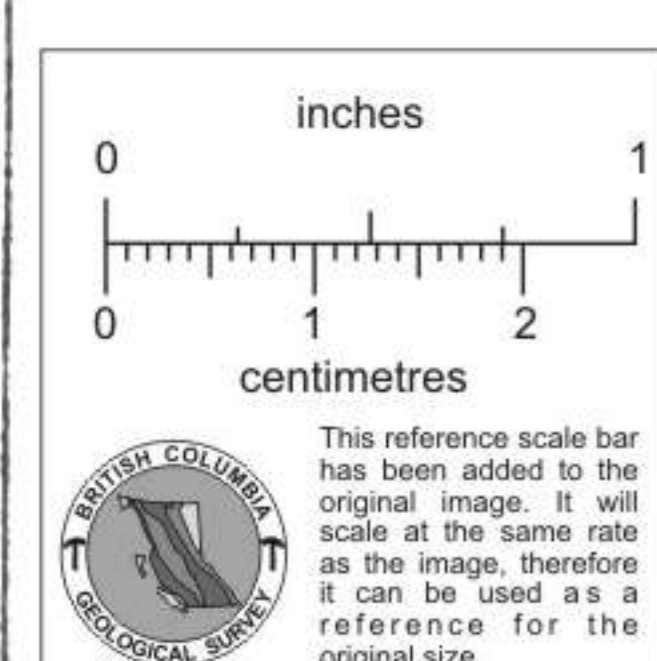
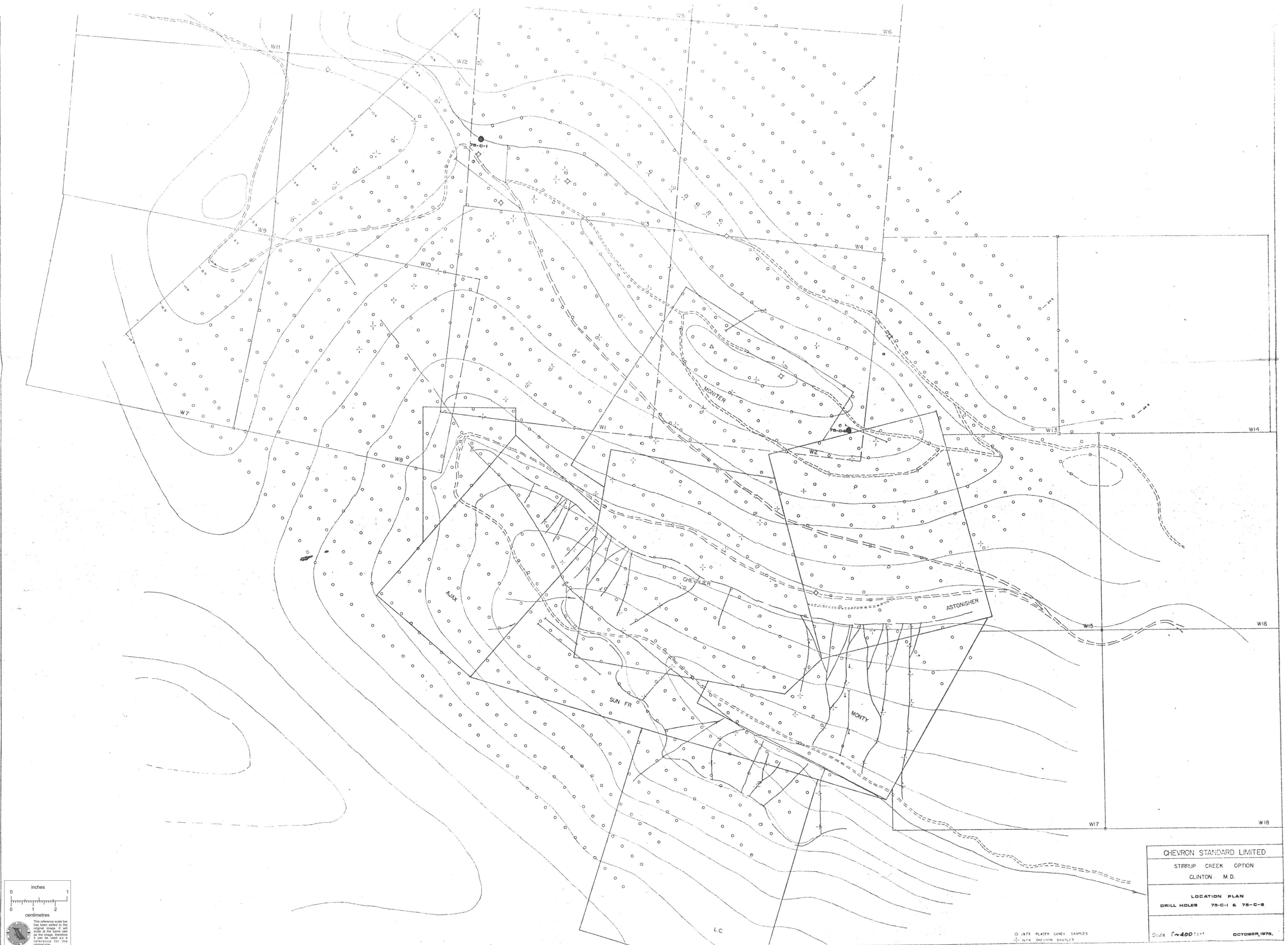
STIRRUP CREEK CLAIMS

1 inch = 4 miles.



Index to Adjoining Sheets

Figure 1



| | |
|-----------------------------|----------------|
| CHEVRON STANDARD LIMITED | |
| STIRRUP CREEK OPTION | |
| CLINTON, M. D. | |
| LOCATION PLAN | |
| DRILL HOLES 75-C-1 & 75-C-2 | |
| Scale 1"=400 feet | OCTOBER, 1978. |

○ 1973 PLACER GANEX SAMPLES
 - 1974 CHEVRON SAMPLES

Figure 2.

DIAMOND DRILL RECORD

PROPERTY Stirrup Creek - C422

HOLE No. 75-C-1

| DIP TEST | | |
|----------|---------|-----------|
| | Angle | |
| Footage | Reading | Corrected |
| | | |
| | | |
| | | |
| | | |
| | | |

Hole No. 75-C-1 Sheet No. 1 Lat. Total Depth 300 ft.
 Section Dep. Logged By T. Lisle
 Date Begun Sept. 19, 1975 Bearing Vertical Claim
 Date Finished Sept. 23, 1975 Elev. Collar Approx. 6,475 ft. Core Size B

Location - Placer Trench - 195 ft. west of cut

| DEPTH-Feet | DESCRIPTION | SAMPLE No. | WIDTH OF SAMPLE | | Au Ozs./Ton | |
|------------|---|------------|-----------------|-----------|----------------|-------|
| | | | Ft. From | Ft. To | | |
| 0 - 4 | Casing. | 10784 | 11.0 | 40 | 15 | Tr |
| 4 - 300 | Lithic tuffaceous greywacke. | 10783 | 5.0 | 15 | 20 | Tr |
| | 95% of section has been pervasively altered to a rusty | 10782 | 10.0 | 20 | 30 | 0.015 |
| | brown carbonate rich rock. Remainder is a grey (clay | 10781 | 10.0 | 30 | 40 | 0.015 |
| | altered) greywacke which appears to predate the rusty | 10751 | 10 | 40 | 50 | Tr |
| | brown phase. Bedding is not apparent. Limonite with | 10752 | 10 | 50 | 60 | Tr |
| | lesser manganese stain is evident throughout and is | 10753 | 10 | 60 | 70 | Tr |
| | particularly notable at top of section and around steep | 10754 | 10 | 70 | 80 | Tr |
| | fracture zones as at 163 - 165' and 174'. Fresh rocks | 10755 | 10 | 80 | 90 | Tr |
| | were not encountered. | 10756 | 10 | 90 | 100 | Tr |
| | Fracturing is weak to locally strong and complex. Frac- | 10757 | 10 | 100 | 110 | Tr |
| | tures are filled with quartz and carbonate (locally | 10758 | 10 | 110 | 120 | Tr |
| | vuggy). | 10759 | 10 | 120 | 130 | Tr |
| | | 10760 | 10 | 130 | 140 | Tr |
| | | 10761 | 10 | 140 | 150 | Tr |
| | | 10762 | 10 | 150 | 160 | Tr |
| | | 10763 | 10 | 160 | 170 | Tr |
| | | 10764 | 4 | 170 | 174 | Tr |
| | | 10765 | 6 | 174 | 180 | Tr |

DIAMOND DRILL RECORD

PROPERTY Stirrup Creek - C422

HOLE No. 75-C-1

| DIP TEST | | |
|----------|---------|-----------|
| | Angle | |
| Footage | Reading | Corrected |
| | | |
| | | |
| | | |
| | | |
| | | |

Hole No. Sheet No. 2 Lot. Total Depth.
 Section Dep. Logged By
 Date Begun Bearing Claim
 Date Finished Elev. Collar. Core Size

| DEPTH-Feet | DESCRIPTION | SAMPLE No. | WIDTH OF SAMPLE | Ft. From | Ft. To | Au ozs./Ton |
|-----------------|--|------------|-----------------|----------|---------|----------------|
| 4 - 300 (Cont.) | Silicification is generally weak. Quartz occurs as smoky-grey fracture fillings, occasionally weakly pyritized and commonly less than 1/8 inch. They are slightly more numerous between 266' - 288'. Sulphide mineralization, mainly pyrite, is weak and occurs either as fine disseminations, noted mainly in the light grey greywacke; as local, irregular concentrations in fractures (See 1/2 inch dark green 40° zone at 15 1/2'); and as weak very fine fracture fillings, found mainly towards bottom of hole. Some dark sulphide in fractures, (Arsenopyrite? - Stibnite?) - 251' - 252', at approximately 5° to core axis and dark quartz with yellow stain at 267'. END OF HOLE. | 10766 | 10.0 | 180 | 190 | Tr |
| | | 10767 | 3.5 | 190 | 193 1/2 | Tr |
| | | 10768 | 6.5 | 193 1/2 | 200 | Tr |
| | | 10769 | 10.0 | 200 | 210 | Tr |
| | | 10770 | 10.0 | 210 | 220 | Tr |
| | | 10771 | 5.0 | 220 | 225 | Tr |
| | | 10772 | 5.0 | 225 | 230 | Tr |
| | | 10773 | 10.0 | 230 | 240 | Tr |
| | | 10774 | 10.0 | 240 | 250 | Tr |
| | | 10775 | 5.0 | 250 | 255 | 0.02 |
| | | 10776 | 5.0 | 255 | 260 | Tr |
| | | 10777 | 10.0 | 260 | 270 | Tr |
| | | 10778 | 10.0 | 270 | 280 | Tr |
| | <u>CORE RECOVERY:</u> | 10779 | 10.0 | 280 | 290 | Tr |
| | 4 - 14 1/2' - approximately 35%; 77-82' - 60% | 10780 | 10.0 | 290 | 300 | Tr |
| | 14 1/2 - 32 1/2' - 80%; 82 - 106 1/2' - +80% | | | | | |
| | 32 1/2 - 38 1/2' - 45%; 106 1/2 - 300' - +85% | | | | | |
| | 38 1/2 - 77' - 85% | | | | | |

DIAMOND DRILL RECORD

PROPERTY Stirrup Creek C-422

HOLE No. 75-C-2

DIP TEST

| Footage | Angle | |
|---------|---------|-----------|
| | Reading | Corrected |
| | | |
| | | |
| | | |
| | | |
| | | |

Hole No. 75-C-2 Sheet No. 1 Lat. Total Depth 300 feet
 Section Dep. Logged By T. Lisle
 Date Begun Sept. 26, 1975 Bearing Vertical Claim
 Date Finished Oct. 1, 1975 Elev. Collar Approx. 6,500 ft. Core Size B
 Location - N.W. END TRENCH 2

| DEPTH -Feet | DESCRIPTION | SAMPLE No. | WIDTH OF SAMPLE | Ft. From | Ft. To | Au Ozs./Tc |
|-------------|---|------------|-----------------|----------|--------|------------|
| 0 - 4 | Casing. | | | | | |
| 4 - 156 | Argillite. | | | | | |
| | Section has 15 - 25% sandstone in beds commonly less than 1 inch. Beds are at approximately 75° to core axis; are irregular, lensey, locally contorted and occasionally offset by late fractures. | 10785 | 8 | 12 | 20 | Tr |
| | | 10786 | 10 | 20 | 30 | Tr |
| | | 10787 | 10 | 30 | 40 | Tr |
| | | 10788 | 10 | 40 | 50 | Tr |
| | 4 - 50' - Well fractured and moderately well altered (Carbonate). Limonite with some manganese common. | 10789 | 5 | 85 | 90 | Tr |
| | | 10790 | 10 | 90 | 100 | Tr |
| | 50 - 77' - Blue-grey argillite, relatively fresh. | 10791 | 10 | 100 | 110 | Tr |
| | Weak carbonate fractures. Weathering effects weak. | 10792 | 10 | 110 | 120 | Tr |
| | 77 - 156' - Mainly as in 4 to 50' with short, unaltered sections as in 50-77'. | 10793 | 10 | 130 | 140 | Tr |
| | | 10794 | 10 | 140 | 150 | 0.005 |
| | | 10795 | 6 | 150 | 156 | Tr |
| | | 10796 | 4 | 156 | 160 | Tr |
| | | | | | | |
| | | | | | | |
| | | | | | | |
| | | | | | | |
| | | | | | | |

DIAMOND DRILL RECORD

PROPERTY Stirrup Creek C-422

HOLE No. 75-C-2

| DIP TEST | | |
|----------|---------|-----------|
| Footage | Angle | |
| | Reading | Corrected |
| | | |
| | | |
| | | |
| | | |
| | | |

Hole No. Sheet No. 2 Lat. Total Depth

Section Dep. Logged By

Date Begun Bearing Claim

Date Finished Elev. Collar Core Size

| DEPTH-Feet | DESCRIPTION | SAMPLE No. | WIDTH OF SAMPLE | Ft. From | Ft. To | Au Ozs./Ton |
|------------|--|------------|-----------------|----------|--------|-------------|
| 156 - 242 | Granite Porphyry. | | | | | |
| | Generally massive but progressively more fractured and altered towards bottom (220 - 242'). | | | | | |
| | Sections 182-184'; 185-189.5'; 190 - 192.5'; 199 - 205'; | 10797 | 7.0 | 185 | 192 | Tr |
| | 206 - 209' are light grey, clay altered porphyry with traces of pyrite. Remainder is speckled, brown, | 10798 | 10.0 | 225 | 235 | Tr |
| | weakly carbonated porphyry which appears to post-date | 10799 | 7.0 | 235 | 242 | 0.005 |
| | grey phase. | 10800 | 8.0 | 242 | 250 | 0.005 |
| | Intrusive is considered to be a sill and contacts, | 10801 | 10.0 | 250 | 260 | Tr |
| | while locally irregular are greater than 50° to core | 10802 | 10.0 | 260 | 270 | Tr |
| | axis. Weathering effects more apparent in bottom | 10803 | 6.0 | 270 | 276 | 0.005 |
| | section. | 10904 | 7.0 | 276 | 283 | Tr |
| | | 10805 | 10.0 | 283 | 293 | Tr |
| 242 - 293 | Argillite. | 10806 | 7.0 | 293 | 300 | 0.005 |
| | 242 - 255' - Mainly blue-grey. Section has less sandstone than in 4 - 156'. Section is weak to moderately well fractured. Some brecciation - Silicified at 247'. | | | | | |
| | | | | | | |
| | | | | | | |
| | | | | | | |
| | | | | | | |

DIAMOND DRILL RECORD

PROPERTY Stirrup Creek C-422

HOLE No. 75-C-2

| DIP TEST | | |
|----------|---------|-----------|
| Footage | Angle | |
| | Reading | Corrected |
| | | |
| | | |
| | | |
| | | |
| | | |

Hole No. Sheet No. 3 Lat. Total Depth

Section Dep. Logged By

Date Begun Bearing Claim

Date Finished Elev. Collar Core Size

| DEPTH -Feet | DESCRIPTION | SAMPLE No. | WIDTH OF SAMPLE | Ft. From | Ft. To | Au Ozs./Ton |
|-------------|--|------------|-----------------|----------|--------|-------------|
| | 242 - 255' (Cont.) | | | | | |
| | Late quartz and Carbonate fractures weak to locally strong - Rusty brown alteration spotty. | | | | | |
| | 255 - 293' - As in 4 - 50' but section is more highly fractured and brecciated. | | | | | |
| 293 - 300 | Granite Porphyry: Well carbonated, with limonite and some manganese stain. Locally silicified 293-295' with traces of pyrite. | | | | | |
| | END OF HOLE. | | | | | |
| | CORE RECOVERY: | | | | | |
| | 4-12'; approximately 25% 42½-156' approximately 85% | | | | | |
| | 12-20'; " 70% 156 -272' +90% | | | | | |
| | 20-30'; " 80% 272-283' 45% | | | | | |
| | 30-38½'; " 40% 283-300'; +90% | | | | | |
| | 38½-42½'; " 75% | | | | | |
| | | | | | | |
| | | | | | | |
| | | | | | | |
| | | | | | | |
| | | | | | | |

BREAKDOWN FOR INVOICE #42317

10/17/55
 1500.00

MOBILIZATION

ADDITIONAL COSTS FOR MOVING IN DRILL
 90 HRS @ \$13.00

\$1170.00

SETTING UP DRILL, CAMP & WATER SUPPLY
 30 HRS @ \$13.00

\$390.00

DRILLING HOLE #1

CORING 0-4' = 4' @ \$12.00 = \$48.00
 CORING 4-300' = 296' @ \$13.00 = \$3,848.00

\$3900.00

MOVING FROM HOLE #1 TO HOLE #2
 20 HRS @ \$13.00

\$264.00

DRILLING HOLE #2

CORING 0-4' = 4' @ \$13.00 = \$52.00
 CORING 4-300' = 296' @ \$13.00 = \$3,848.00

\$3900.00

COSTS FOR PUMPING WATER
 35 HRS @ \$13.00

\$455.00

COST FOR MOVING EQUIPMENT FROM DRILL SITE
 TO FERRY

27 HRS @ \$13.00

\$1131.00

TOTAL

\$12,810.00

| | |
|----------|-----------|
| APPROVED | DATE |
| PROJECT | EXP. CODE |
| | |
| | |
| C427 | 12,810.00 |

THIS AGREEMENT MADE THE 7 DAY OF AUGUST 1975.

422

BETWEEN: CHEVRON STANDARD LIMITED
a body corporate duly incorporated under the laws of
the Province of British Columbia, and having its head
office at 901 MARINE BLDG., 355 BARRARD STREET,
VANCOUVER, B.C. V6C 2G8
(hereinafter called the Company)

AND: WRIGHT DRILLING LTD., a body corporate duly incorporated
under the laws of the Province of British Columbia and
having its Registered Office at Suite 305 - 186 Victoria
Street, Kamloops, British Columbia
(hereinafter called the Contractor)

WHEREAS:

A. The Company has requested the Contractor to complete
a minimum 600 feet of drilling and related
services as hereinafter set forth on the property of the
Company in the LILLOOET AREA OF BRITISH COLUMBIA.

B. The Contractor has agreed to do the said Diamond drilling
and to perform the related services requested upon the terms,
conditions and provisos hereinafter contained:

NOW THEREFORE THIS Agreement witnesseth that in consideration of the
payment of the amounts stipulated herein and mutual promises and
covenants herein contained, it is understood and agreed by and between
the parties as follows:

1. SCHEDULE OF RATES - CORING

The Company hereby employs the Contractor to drill a series of
bore holes on the said property using a BQ core barrel producing
a core of approximately 1 15/16 inches. The Company agrees to
pay the Contractor on a footage basis for all drilling according
to the following schedule of rates:

| <u>Coring</u> | <u>From</u> | <u>To</u> | <u>Price/foot</u> |
|-------------------|-------------|-----------|-------------------|
| | 0' | 500' | \$13.00 |
| | 500' | 1000' | N/A |
| <u>Overburden</u> | | | |
| | 0' | 25' | \$13.00 |
| | 25' | 50' | \$14.00 |
| | 50 plus | | Field cost |

2. TRANSPORTATION AND MOVES

A. It is agreed that the moving of drill and camp equipment,
supplies and personnel to the transport discharge point and return
from the transport loading point, shall be the Company's account
at a lump sum of fifteen hundred dollars with seventy-five
percent (75%) payable upon completion of the move in and the
remaining twenty-five (25%) payable upon completion of the minimum
footage.

B. In the event access to the drilling area cannot be realized with
the Contractor's truck, moving from the truck discharge point to
the drilling area will be for the Company's account at the specified
labour rate.

C. The Contractor agrees to erect a suitable camp for the purpose of providing room and board for personnel associated with the drilling operation. Erection and dismantling of the camp will be for the Company's account at the specified labour rate.

D. It is agreed that moves between drill sites shall be at the agreed labour rate. Moving time shall be from the time of completion of pulling to set - up time at the next drill site. No machine rental charge will be made unless the rig is used to move itself.

3. WATER SUPPLY

If the source of water supply is at a greater distance than two thousand (2000) feet from the drilling site, or over three hundred (300) feet vertical lift, the Contractor will be paid the extra cost of supplying water to the drill site in addition to the other contract charges. Supplying of water to be negotiated on site

4. MUD AND ADDITIVES:

If ever required to help penetrate the overburden and or aid in core recovery, would be supplied at cost on the job site plus ten percent. Time spent mixing mud and stabilizing the hole would be charged on a field cost basis.

5. REAMING CASING AND CEMENTING:

If ever necessary to help prevent cave-ins, would be performed on a field cost basis.

6. DIRECTIONAL AND CONTROLLED DRILLING

It is mutually agreed that directional drilling to change the direction of a bore hole and controlled drilling to maintain the angle of a bore hole shall not be part of this agreement.

7. SECURITY

The Contractor will not give out any information regarding drill results or access to any person other than to the Company's representative.

8. BOARD AND LODGING

The Contractor agrees to provide board and lodging for its own men at its own expense, and to provide meals to a limited number of the Company's representatives at the rate of N/A per meal.

The Company agrees on fly-in jobs that all transportation and expediting costs be charged to the Company's account.

9. CORE BOXES

It is mutually agreed, that if requested, core boxes would be supplied on the job site at cost, plus ten percent (10%).

10. STANDBY

It is agreed that standby, dip testing, delay time or other time which the Contractor's crews are performing services for the Company, not otherwise covered herein, shall be performed at a field cost basis.

11. HELICOPTER PROJECTS

The Company agrees that on helicopter jobs they will supply all fuels and transportation cost from truck discharge point to drill sites at no cost to the Contractor.

12. DRILLING SITES

The Contractor agrees to case and drill on the sites and at angles and azimuths selected by the Company representative and to follow the instructions of the said representative relating to place and time of drilling.

13. CAVES

In the event that cavities or loose and caving materials are encountered of a nature as to prevent the successful completion of any hole, the Contractor does not, under such conditions, guarantee to drill to a predetermined depth and, in the event that it becomes necessary to abandon the hole, the Company agrees to pay for such uncompleted holes at the rate herein specified for all footage completed.

In the event it becomes necessary to resort to cementing, reaming of casing or mud circulation in bedrock, the Company agrees to reimburse the Contractor at field cost.

Wherever pipe or casing is lost or left in a hole on the instruction of the Company's engineer, the Company agrees to pay the Contractor for such pipe or casing at cost, f.o.b. drill site. Caved or broken ground would be drilled on field cost basis, if encountered.

14. TRACTOR

If required, the Contractor will supply at the Company's cost a tractor for the construction and maintenance of access roads, drill site preparation and cleanup and the moving of the diamond drill.

15. FIELD COST

It is agreed that the hourly rate shall be interpreted here and hereinafter to be thirty dollars per hour, per drill outfit. It is also agreed that the Contractor shall include in the hourly rate the cost of supplying a regular two man drill crew, supervision and maintenance as required, drilling machinery and associated equipment, fuels, and board and lodging for the drill crew.

In the event labour over and above the regular two man crew and supervision are required, the Contractor agrees to supply such additional labour at the rate of thirteen dollars per man per hour.

It is further agreed and understood that when the Contractor is working at the field cost rate, the cost of pipe or casing lost or left in the hole, diamond articles and materials and supplies consumed in the work shall be for the Company's account at cost, plus 10%

16. PAYMENT

The Company agrees to pay the Contractor, in Canadian funds the above prices. Payment to be made within 15 days of the date of the account rendered. Invoices shall be submitted twice monthly.

17. COMPENSATION AND INSURANCE

The Contractor agrees that the men employed by him in the performance of this Contract shall be fully covered under Worker's Compensation laws according to the Province of British Columbia and will keep such men covered and will pay the assessment required and will protect the Company from any action arising therefrom, excluding however, claims arising out of any negligent act or omission of the Company, its servants or agents.

The Contractor shall, at his own cost, maintain Liability and Property damage insurance in the amount of five hundred thousand (500,000.00) dollars.

The Contractor carries an all perils insurance policy limited to \$20,000.00 per drilling outfit at his own cost. The Company agrees that additional insurance cost incurred for flying or barging of equipment will be to their account.

18. RIGHT OF ENTRY AND REMOVAL OF EQUIPMENT.

Company will provide at its own expense, all rights of way, both ingress and egress, and the peaceable possession of all real property that may be required in connection with said work including real property upon which all necessary temporary buildings and other facilities may be erected, or placed, and will save the Contractor harmless from any and all damages, claims, demands, costs or charges of whatsoever kind or character incident to the occupation and use of said real property.

Upon completion of such work by the Contractor, the Contractor shall have the right to remove, within a reasonable length of time, all temporary buildings and other fixtures, trade fixtures, machinery, equipment, appliances and facilities furnished by and placed upon such real property by Contractor.

19. LIENS

The Contractor shall be responsible for and will pay promptly all costs and charges, incurred by itself for labour, machinery, tools and supplies used in completing the work hereunder so that no lien or other such charge relative to the Contractor, may be registered against the Company or the property.

20. FORCE MAJEURE

Neither party to the agreement shall be liable for any loss or damage caused by reason of strikes, acts of God, action of the elements, or any other causes beyond its control.


21. LAWS APPLICABLE

This agreement shall be interpreted and any dispute arising hereunder shall be determined in accordance with the laws of the Province of British Columbia.

22. ASSIGNMENTS

This agreement shall be binding upon and shall inure to the benefit of the parties hereto, their respective successors and assignees, provided, however, that the same shall not be assignable by either party until the consent in writing of the other shall have first been had and obtained thereto.

IN WITNESS THEREOF, this agreement has been executed by the parties hereto the day and the year first herein written.

By 
CHEVRON STANDARD LIMITED

By 
WRIGHT DRILLING LTD.

APPENDIX III

STATEMENT OF QUALIFICATIONS: T.E. LISLE

1. Graduate of University of British Columbia with a B.Sc. in Geology, 1964.
2. Intermittent field experience in Geology 1955 - 1964.
3. 1964 - Present - Continuous geological work in exploration geology, mainly in British Columbia.
4. (a) Member - Association of Professional Engineers of British Columbia;
(b) Member of Geological Association of Canada;
(c) Member of Canadian Institute of Mining and Metallurgy.

T.E. LISLE, P. ENG.

Vancouver, B.C.
October 8, 1975