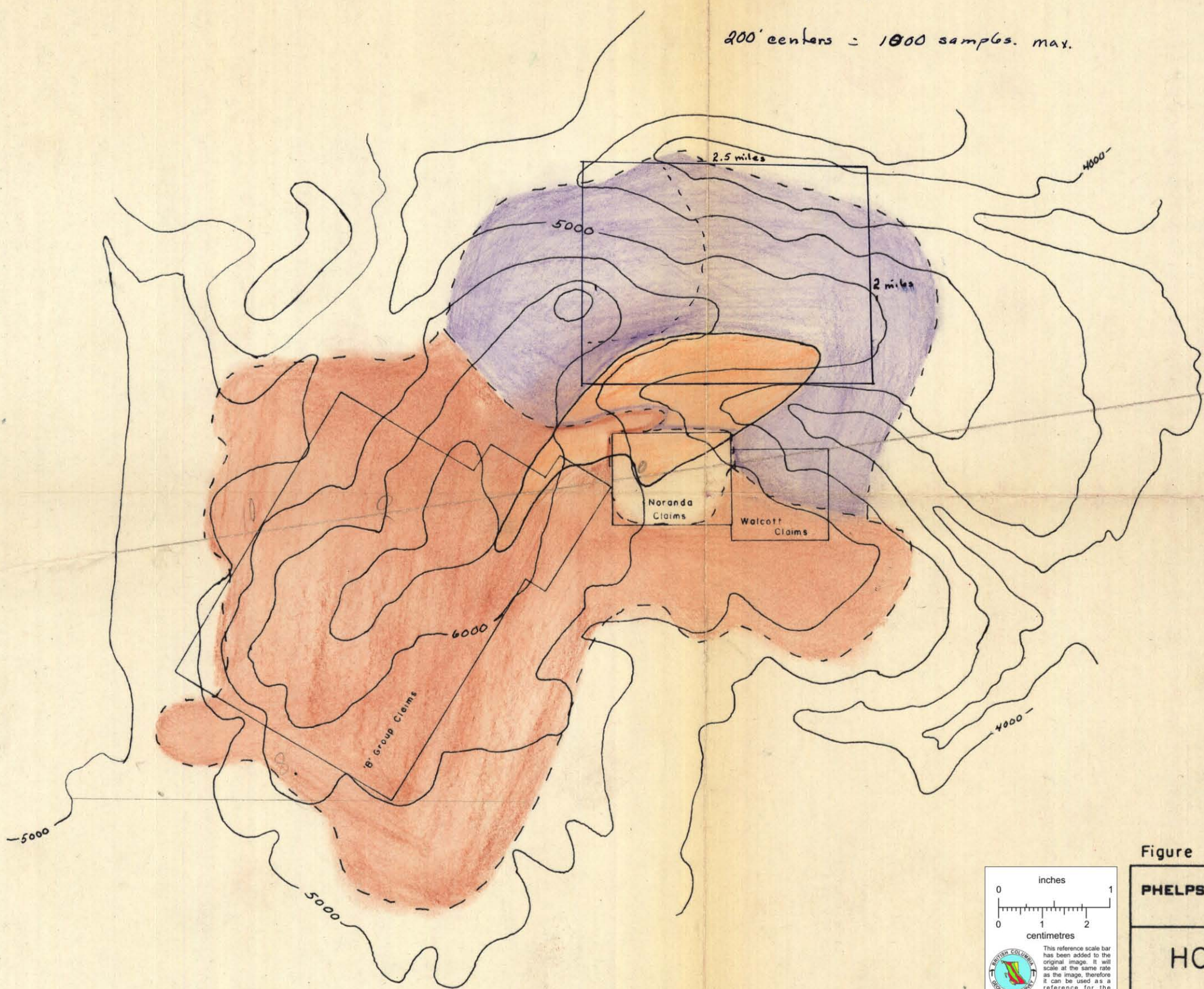
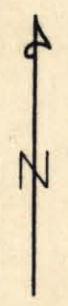





200' centers = 1000 samples. max.



LEGEND

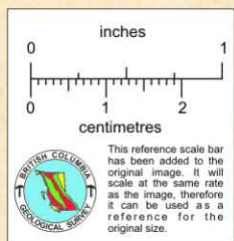
-  Area prospected in 1966
-  Area to be prospected in 1967
-  Intrusive contact

Contour Interval = 500'

Figure 13

PHELPS DODGE CORPORATION OF CANADA, LIMITED
VANCOUVER OFFICE

HOUSTON TOMMY CREEK
TELKWA MOUNTAINS



840168

SCALE: 1" = 1 Mile	DATE: Nov. 22, 1966	SURVEYED BY:	DRAWN BY: L.M.A.
-----------------------	------------------------	--------------	---------------------