

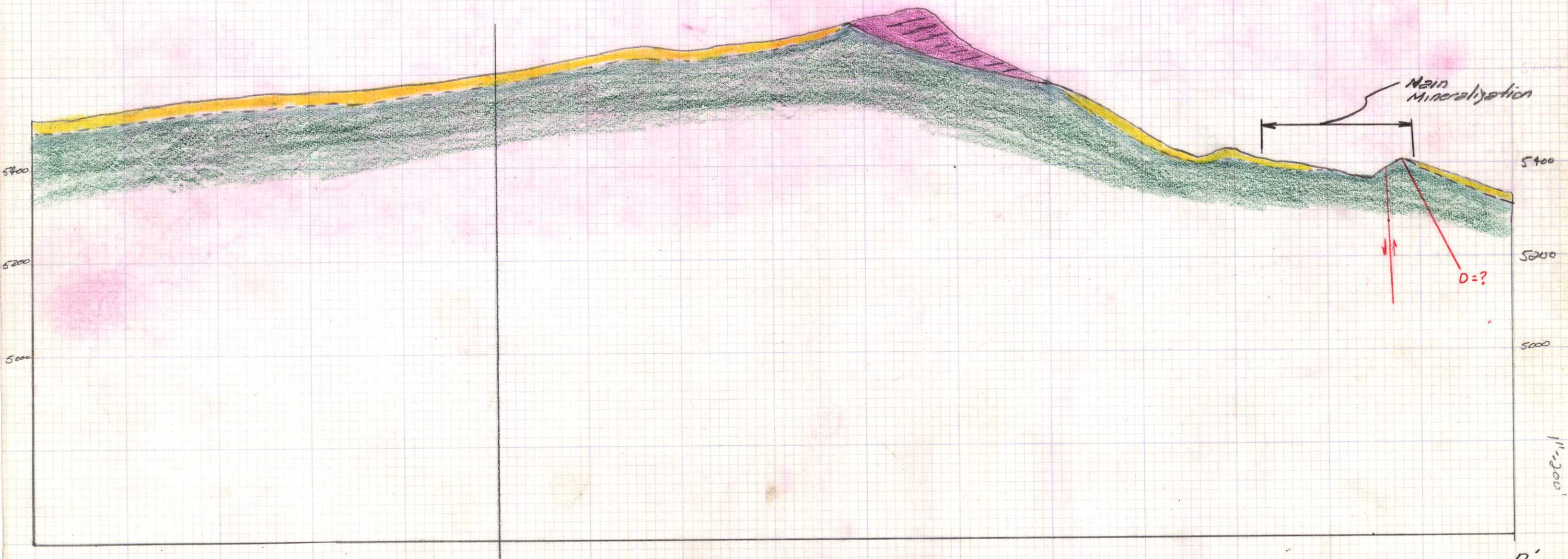
HOUSTON -
Tommy 840163

093L/07W

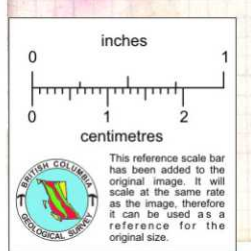
Diorite Intrusion East Side
 Flattop Mountain
 Section D-D'

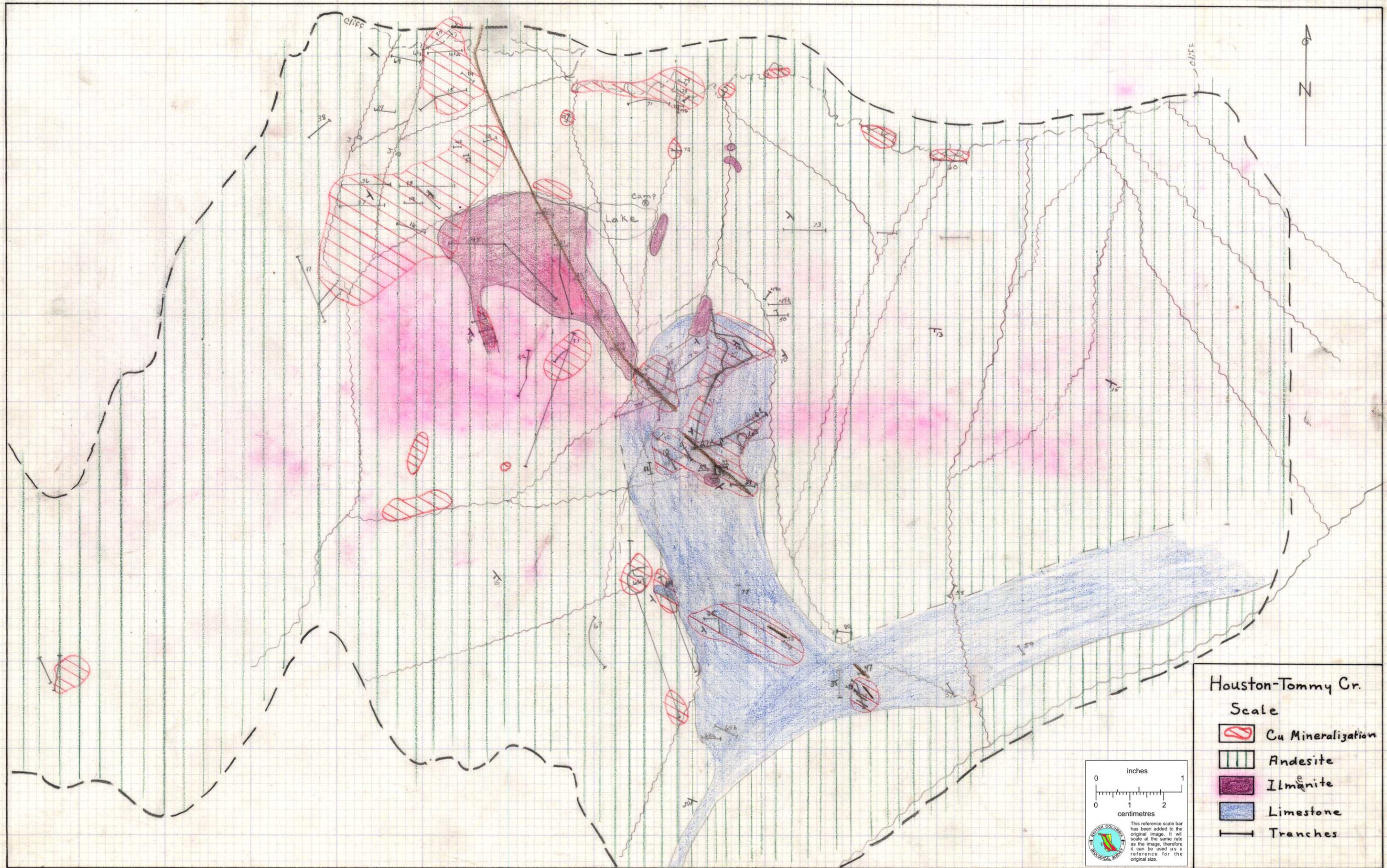
LEGEND

- Sedimentary and Volcanic Strata
- Diorite Porphyry Intrusion
- Alluvium and Glacial Cover. Depth of Cover Unknown.
- Fault



Scale: Hor. 1" = 300'
 Vert. 1" = 200'





Diorite Intrusion

LEGEND

- █ Sedimentary Rocks
- █ Igneous Intrusive
- Alluvial Cover
- / Faults

