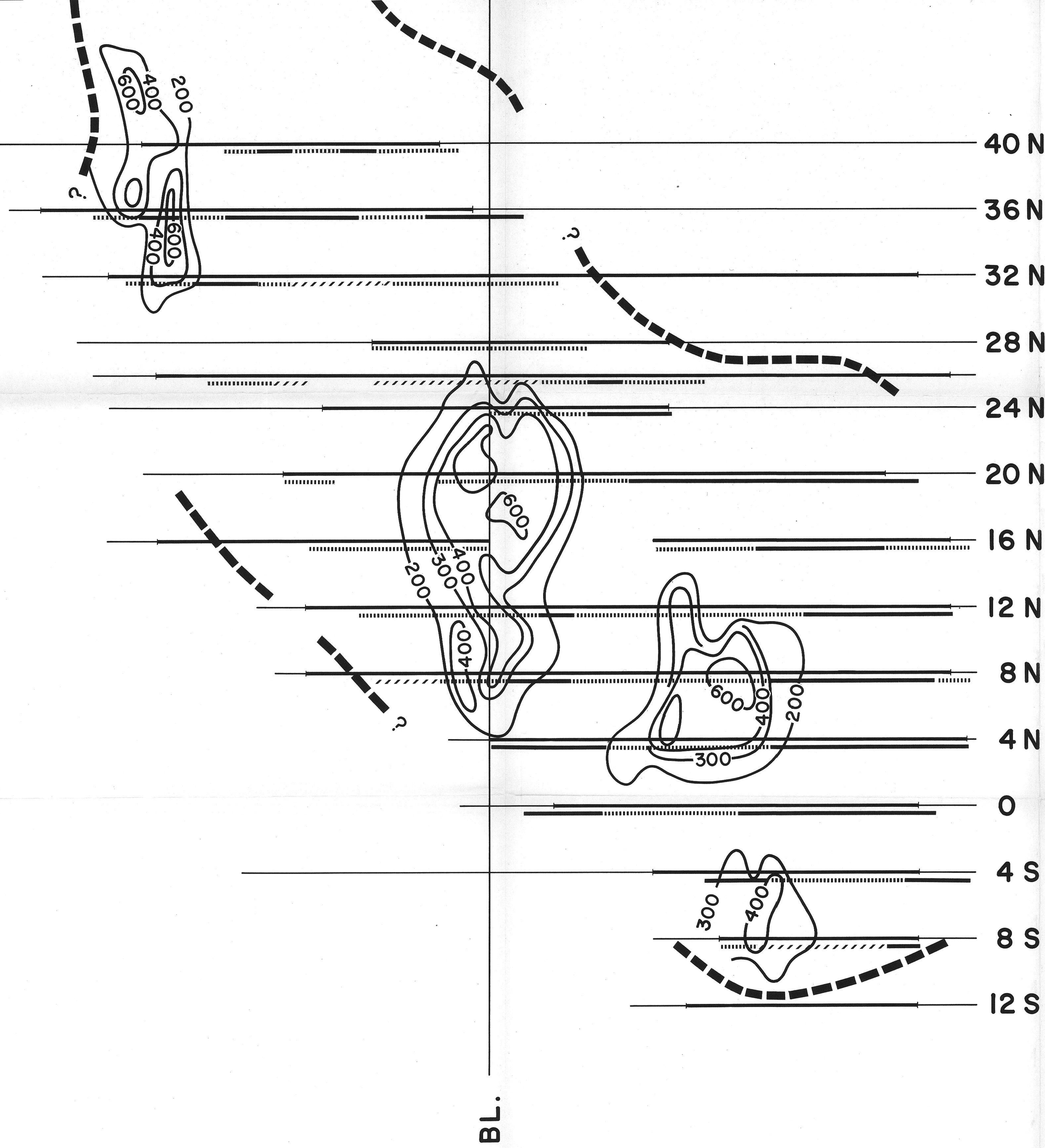


# I.P. AND MAGNETIC SURVEYS

## BABINE LAKE AREA

### B.C.



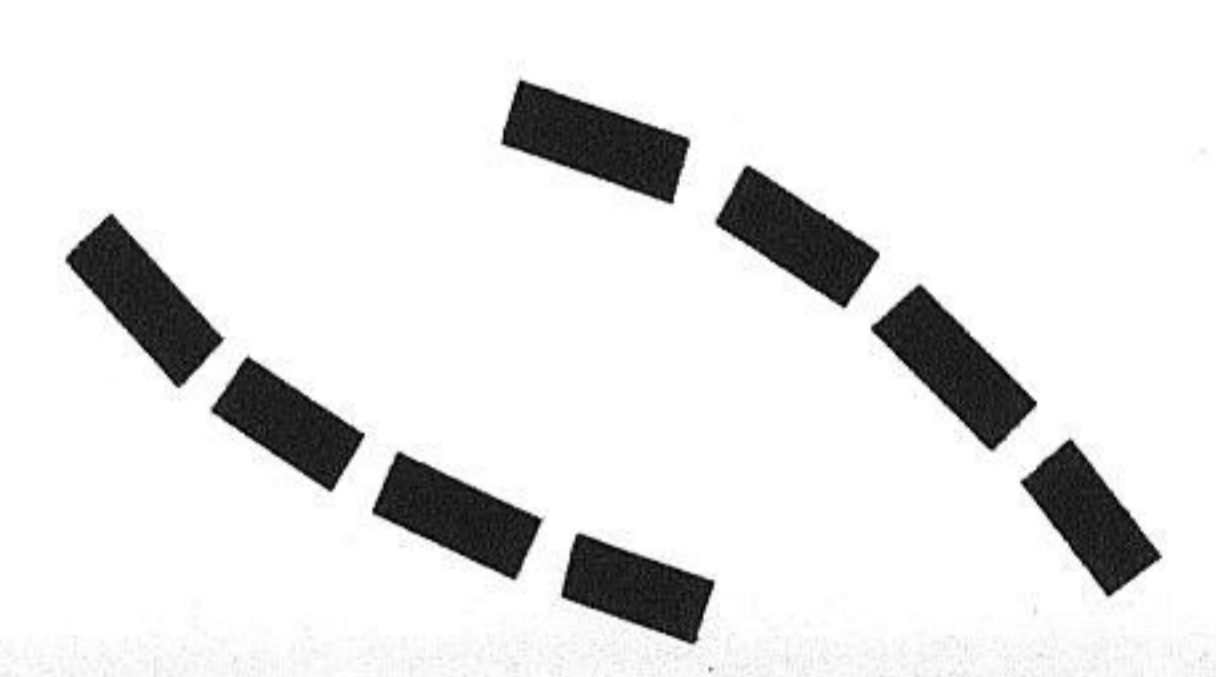
#### I.P. ANOMALIES

- DEFINITE
- PROBABLE
- POSSIBLE

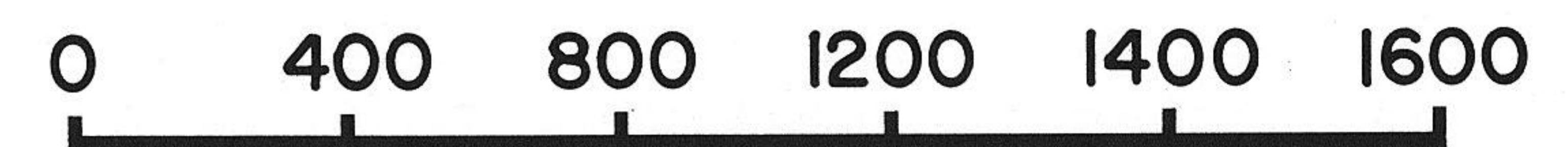
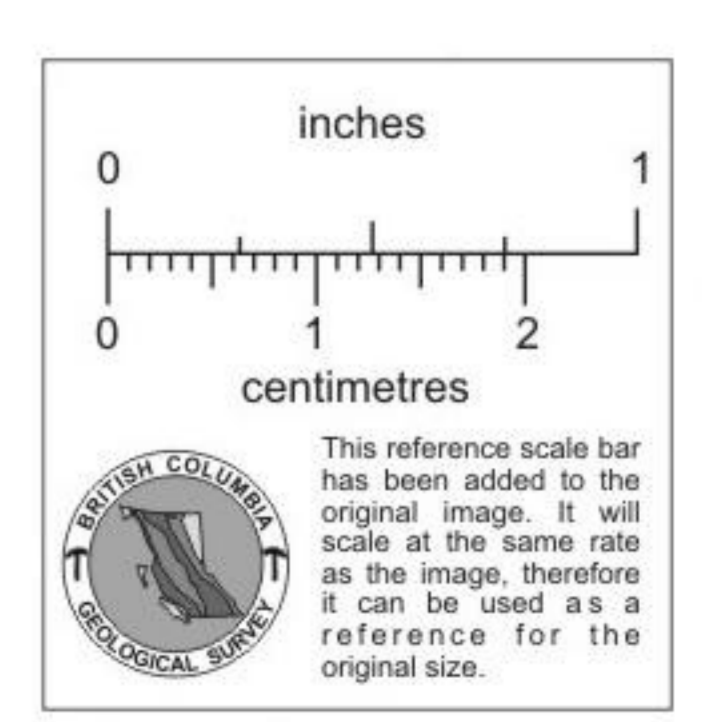
#### LIMITS OF EFFECTIVE I.P. COVERAGE



OVERALL HIGH  
I.P. RESPONSE



MAGNETIC CONTOURS



SCALE IN FEET