

831032

# ***INTERNATIONAL CHEROKEE DEVELOPMENTS LTD.***

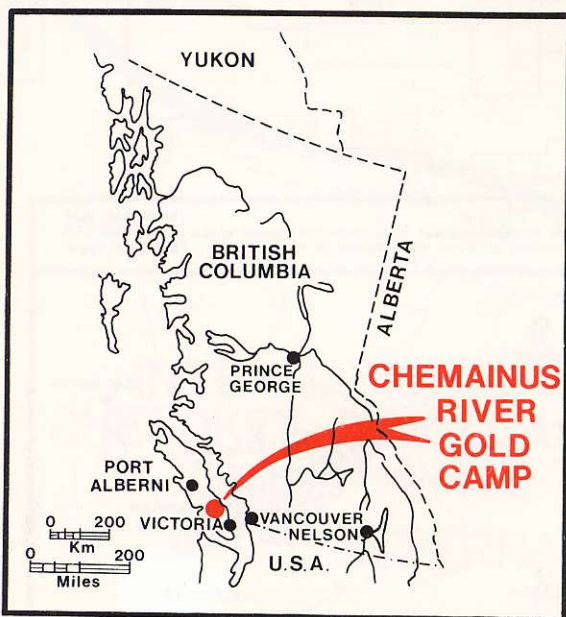
## **CHEMAINUS RIVER GOLD CAMP REVIEW 1986**

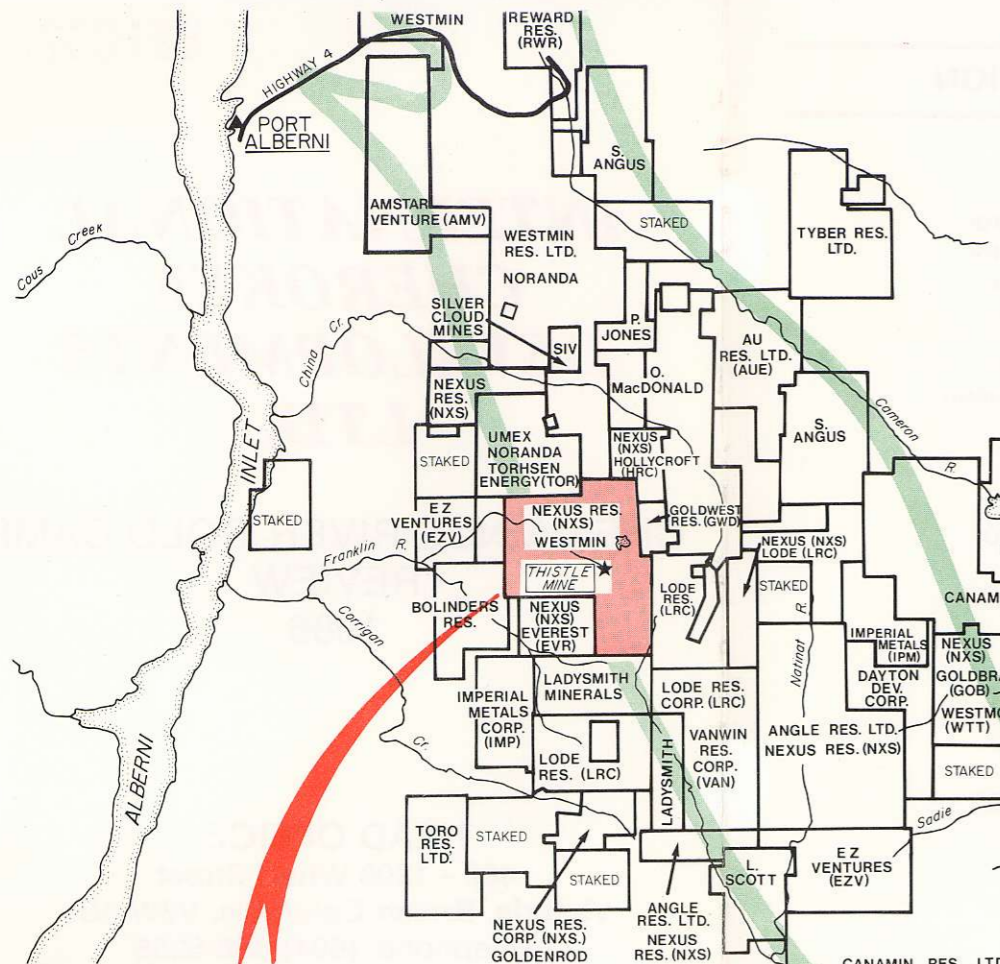
### **HEAD OFFICE**

402 - 1208 Wharf Street

Victoria, British Columbia, V8W 3B9

Telephone: (604) 388-6258

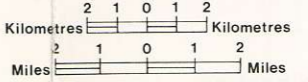




- HIGHLIGHTS OF 1985/86 ACTIVITIES**
- 1 Abermin Corporation : drilling
  - 2 Esso Res./Kidd Creek : drilling, trenching, geophysics
  - 3 Canamera Expl. : drilling, geochemistry, geophysics
  - 4 Falconbridge Copper : drilling, geochemistry
  - 5 Falconbridge Ltd. : drilling, geochemistry, geophysics
  - 6 Utah Mines Ltd. : geochemistry, geophysics
  - 7 Utah Mines Ltd. : geochemistry, geophysics

**INTERNATIONAL CHEROKEE DEVELOPMENTS LTD. (ICK-V)**

**CHEMAINUS RIVER GOLD CAMP SICKER GROUP VANCOUVER ISLAND BRITISH COLUMBIA**



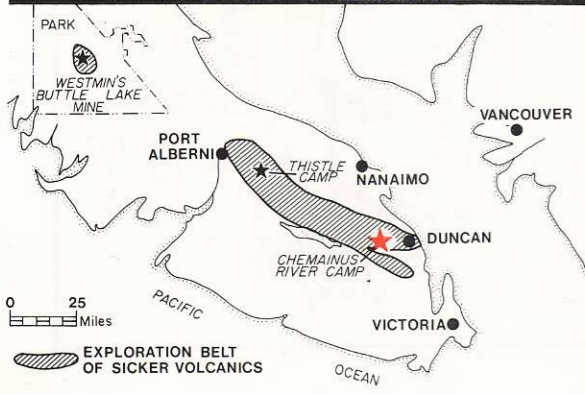
SICKER VOLCANIC BELT   
MINERAL OCCURRENCE   
(Au, Ag, Zn, Pb, Cu)

Major exploration program underway by WESTMIN RES.

**INTERNATIONAL CHEROKEE DEV.**  
(Option to earn 50%)  
**NEXUS RES. (NXS)**  
**ANGLE RES**  
(25% each)

**ABERMIN'S DISCOVERY**  
(Au, Ag, Zn, Pb, Cu)

This map has been compiled from information believed reliable, actual locations of claims and ownership is not guaranteed.  
MERIDIAN MAP DRAFTING LTD MAR. 5th, 1986



**INTERNATIONAL CHEROKEE DEV. (ICK-V)**  
(100% Interest)

**INTERNATIONAL CHEROKEE**  
(Option to earn 50%)  
**VANWIN RES. CORP. (VAN)**

PLACER GOLD

FORMER TWIN J MINE

---

## CHEMAINUS RIVER GOLD CAMP

---

The Company has acquired 129 Units by way of outright purchase and thus has a 100% interest in these units. The Company acquired options on a further 119 Units which requires certain work to be done in order to earn 50% interest. The total units comprise 248, being approximately **15,000 acres** of land.

The property, located north of the east end of Cowichan Lake in the Victoria Mining Division, is underlain mainly by rocks of the Paleozoic Sicker Group, including the Myra Formation and Sediment-Sill Unit.

The Myra Formation is a well-known host of volcanogenic massive sulphide deposits. The presence of three manganiferous cherty showings, hosted by Myra Formation tuffs within 4 km of the property indicates that a favourable environment for the formation of volcanogenic massive sulphide mineralization is present. Abermin Corporation's Lara property, which is 10 miles northwest of Duncan is a volcanogenic massive sulphide prospect, located 3 km to the northeast of the one property.

In July 1985, after a total of 40 diamond drill holes had been completed, Abermin announced that a mineralized zone 1,300 feet long by 350 feet deep had been outlined. The zone is open on both ends and to depth. The average true width of the zone is 20.53 feet and it grades 0.051 oz Au/ton, 1.12 oz Ag/ton, 1.98% Zn, 0.44% Cu, and 0.36% Pb. The eastern end of the zone is richer. A diamond drill hole located 1650 feet east of the zone along strike intersected 12.07 feet (true thickness) of massive sulphide mineralization grading 0.213 oz Au/ton, 8.60 oz Ag/ton, 9.22% Zn, 1.16% Cu, and 2.53% Pb.

---

## HISTORY OF THE AREA

---

Since the announcement in 1979 of Westmin Resources Ltd.'s new H-W deposit with reserves of **15,232,000 tons** grading 5.3% Zn, 2.2% Cu, 0.07 oz Au/ton, 1.1 oz Ag/ton, 0.3% Pb, the Sicker Group

has become a very active exploration target. Many major exploration companies and numerous junior companies have staked almost all of the ground underlain by Sicker Group rocks. Majors active in the Cowichan Lake - Duncan area include **Corporation Falconbridge Copper, Utah Mines Ltd., Abermin Corporation, Esso Minerals Canada, Noranda Exploration Ltd., and Cominco Ltd.**

A past-producing mine hosted by the Sicker Group in the Duncan area is the Twin J. Mine. A total of 305,149 tons of ore mined from 1898 to 1964 yielded at least 40,014 oz Au, 840,472 oz Ag, 21,344,332 lb Cu, 45,864,654 lb Zn, 418,716 lb Pb, and 2600 lb Cd.

Westmin's Lynx and Myra Mines at **Buttle Lake** near Campbell River, have been producing for over 20 years and the company recently spent **\$250 million** developing the H-W Mine and installing a 3,000 tons per day milling complex.

---

## **1986 WORK PROGRAM**

---

Our Company has **commenced work** on the property adjacent to the Abermin Corporation property described above.

As additional financing becomes available, the Company will continue to concentrate their efforts on further exploration of the Sicker Volcanics. **Joint venture** possibilities are under discussion with junior exploration companies as well as a **major Canadian mining corporation.**

---

## **CONCLUSION**

---

Our consulting geologist, Dr. N.C. Carter, P.Eng, says that in view of current levels of **activity in the Port Alberni-Duncan area** and the recent discovery of the Abermin Lara property, coupled with the recognition of large deposits in the Sicker Group such as Westmin's H-W Mine, the company's properties in the Chemainus area are **attractive prospects warranting significant exploration programs.**

---

## **CORPORATE INFORMATION**

---

### **DIRECTORS AND OFFICERS:**

S. Cedric Steele - President/Director

Dr. Arnold Lane - Secretary/Director

Norman Worsley, P.Eng. - Director

Joseph Cunliffe, P.Eng. - Director

Alan Wynne - Exploration Manager

Darlene Rimmer - Shareholder Liaison

### **SHARE CAPITAL:**

Authorized: 25,000,000

Issued: 2,240,250 (includes 375,000  
escrowed)

Awaiting approval on 300,000 shares -  
flow-through

### **AUDITORS:**

Thorne Riddell - K.M.G.

707 Fort Street

Victoria, British Columbia, V8W 3G3

### **TRANSFER AGENT:**

Yorkshire Trust Company

1100 Melville Street

Vancouver, British Columbia, V6E 4B6

### **BANK**

The Royal Bank of Canada

1079 Douglas Street

Victoria, British Columbia, V8W 2R7

Attention: John Foster

### **SOLICITOR:**

Worrall Scott & Page

100 - 200 Granville Street

Vancouver, British Columbia V6C 1S4

Attention: Jim Stewart

### **LISTING:**

Vancouver Stock Exchange

Trading Symbol: ICK-V