

676000 E

678000 E

680000 E

6132000 N

6130000 N

6128000 N

6126000 N

6132000 N

6130000 N

6128000 N

6126000 N

676000 E

678000 E

680000 E



Square: Grid North  
Star: True North  
Arrow: Magnetic North

Angles presented are approximate mean deviations for centre of NTS sheet. Use diagram for reference only.

Grid North - True North: -1.4°  
Grid North - Magnetic North: 13.8°  
Annual change: -0.27" from 1980

### TOTAL FIELD MAGNETICS

Total field magnetic intensity contour data, measured by a cesium high sensitivity magnetometer at an average sensor elevation of 45m, and corrected for diurnal variation.

Map contours are in nanoTeslas, and are multiples of those listed below:

- 2 nT
- 10 nT
- 50 nT
- 250 nT
- 1000 nT

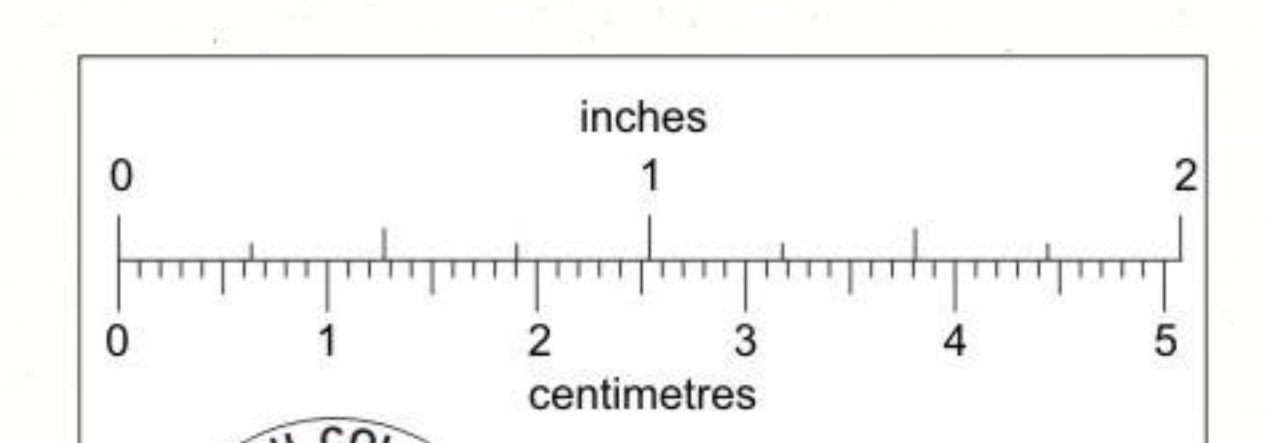
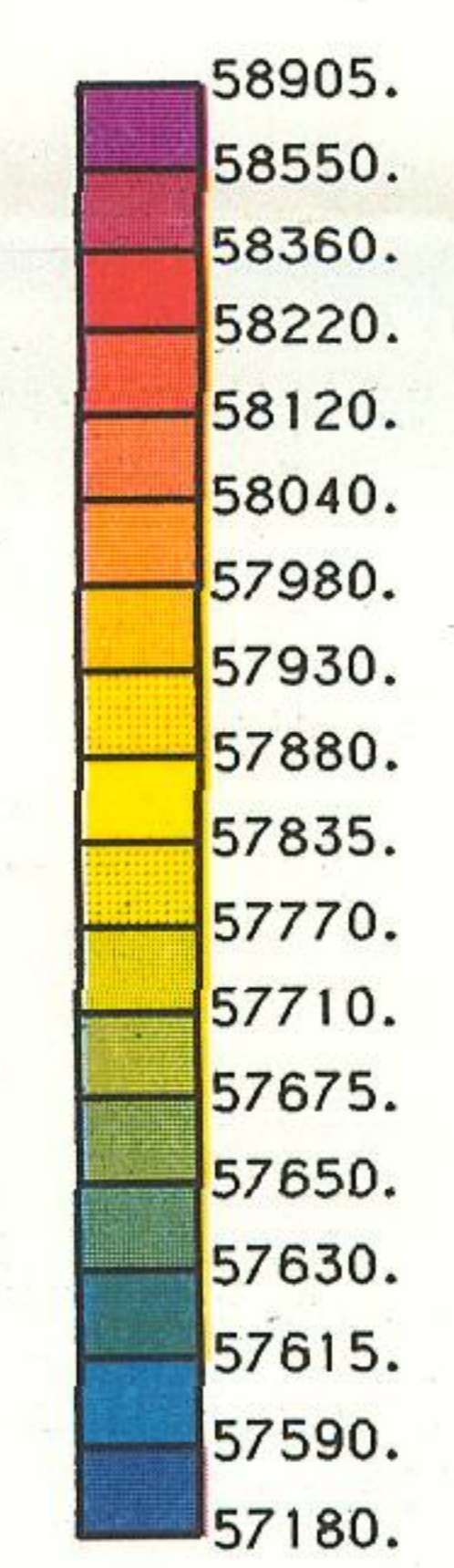
### EM ANOMALIES

EM anomalies selected by computer algorithm and manually confirmed. Selection is based on the response correlation to theoretical sources such as a steeply dipping conductor.

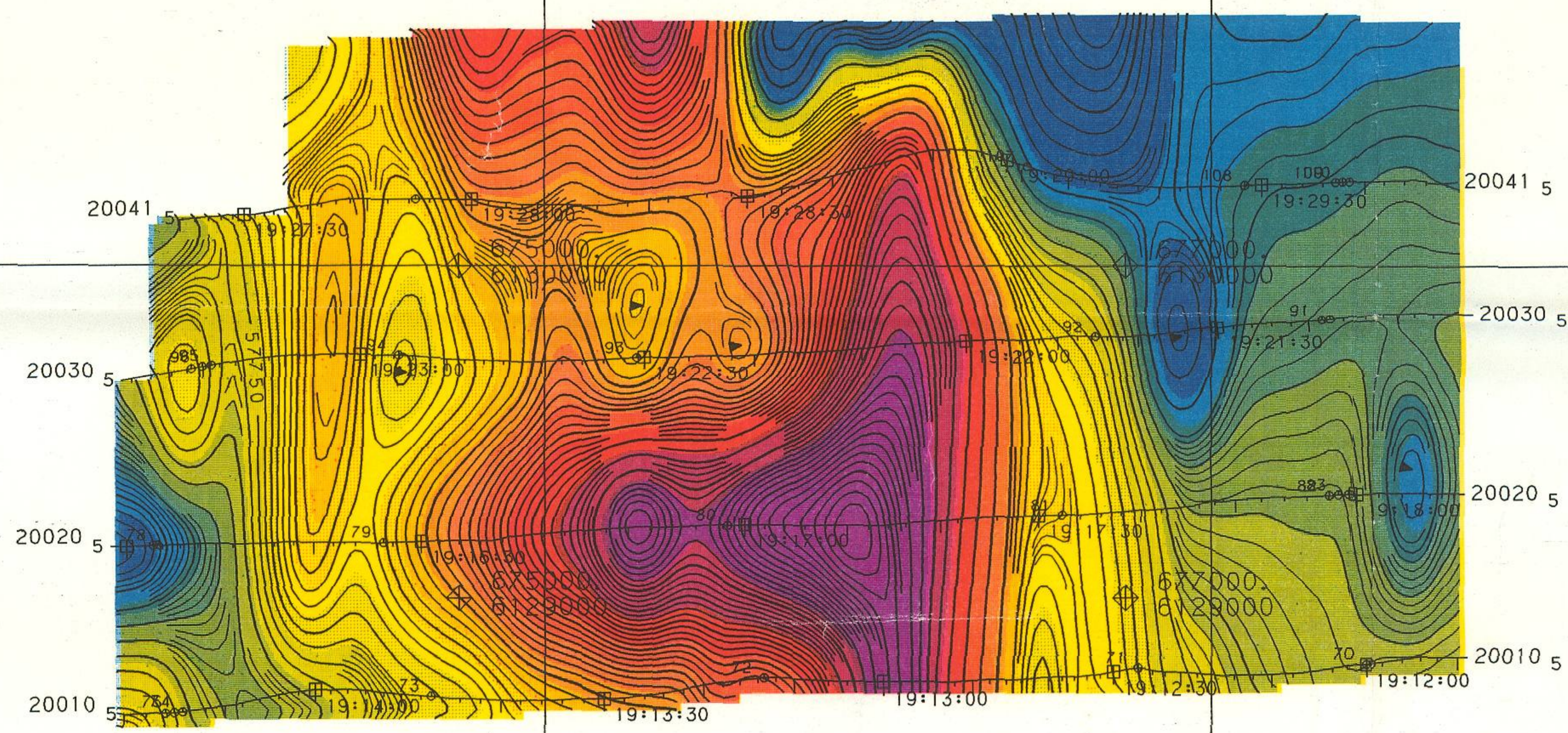
Calculation of conductance is based on the response of the 4600 Hz coaxial data, and forms the basis for anomaly classification.

Letter codes are used to identify individual anomalies on a line, and the inphase amplitude of the 4600 Hz response is annotated opposite.

- A<sub>0</sub><sup>2</sup> 0 - 1 mhos
- 1 - 2 mhos
- ⊖ 2 - 4 mhos
- ⊙ 4 - 8 mhos
- ⊗ 8 - 16 mhos
- 16 - 32 mhos
- > 32 mhos



This reference scale bar has been added to the original image. It will scale at the same rate as the image, therefore it can be used as a reference for the original size.

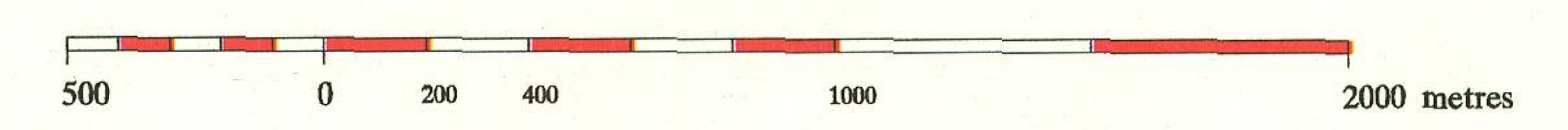


NORANDA EXPLORATION COMPANY, LIMITED

## TOTAL FIELD MAGNETICS

NAK  
BRITISH COLUMBIA

SCALE 1:20 000



AERODAT LIMITED

Date Flown: FEBRUARY, 1993

NTS Map Ref: 93M/8

Project Ref: J9321

830932