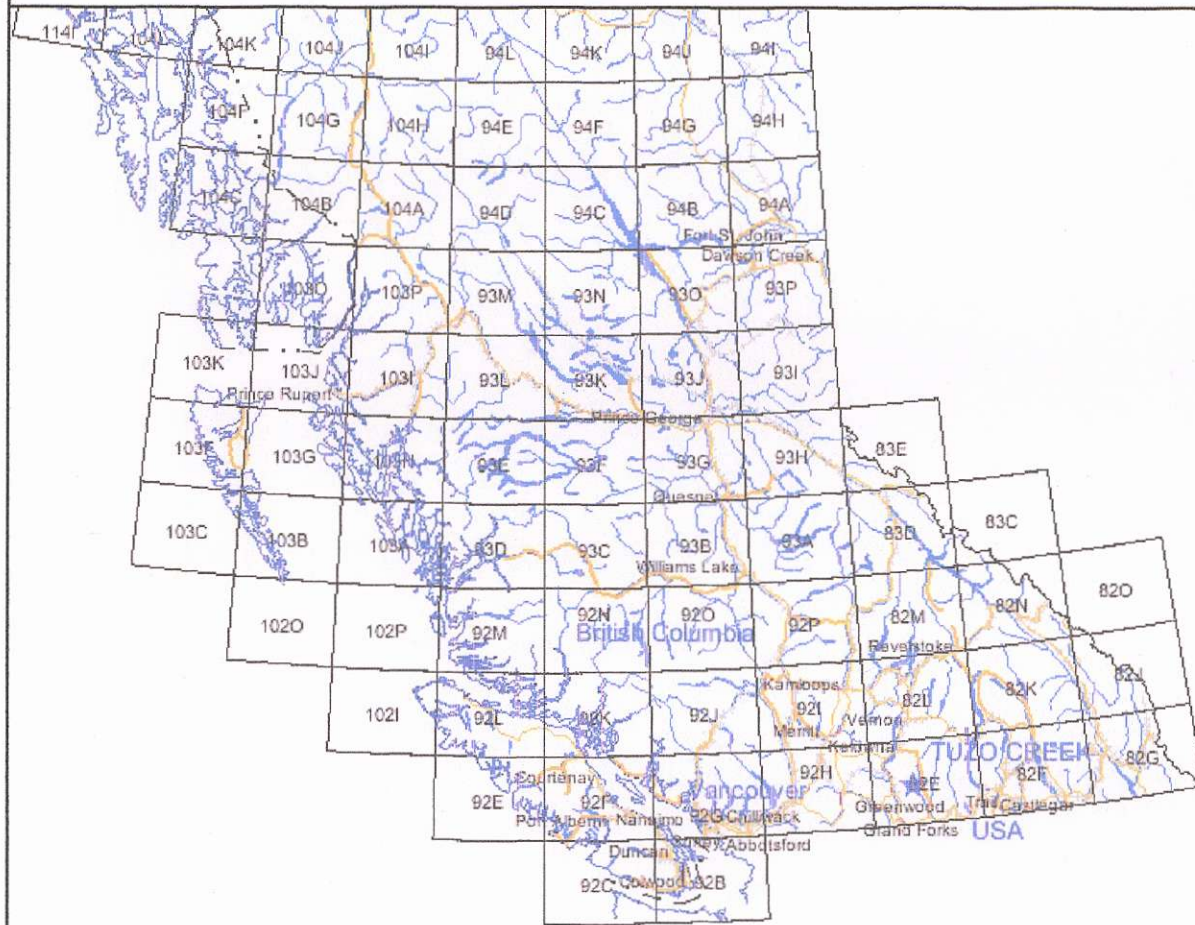


082E/6
Tuzo Creek No. 830723

Figure 1 - Location

Legend



- Provincial Boundary (1:6M)
- Boundary (International)
- Boundary (Interprovincial)
- NTS Grid
- Transportation - Lines (1:6M)
- Road - Trunk
- Road - Main
- Rail Line
- Water - Lines (1:6M)
- River/Stream - Definite
- Lake - Definite
- Island - Definite
- Coastline - Definite
- Water - Polygons (1:6M)
- River/Stream - Definite
- Lake - Definite
- Major Cities

Scale: 1:9,417,427

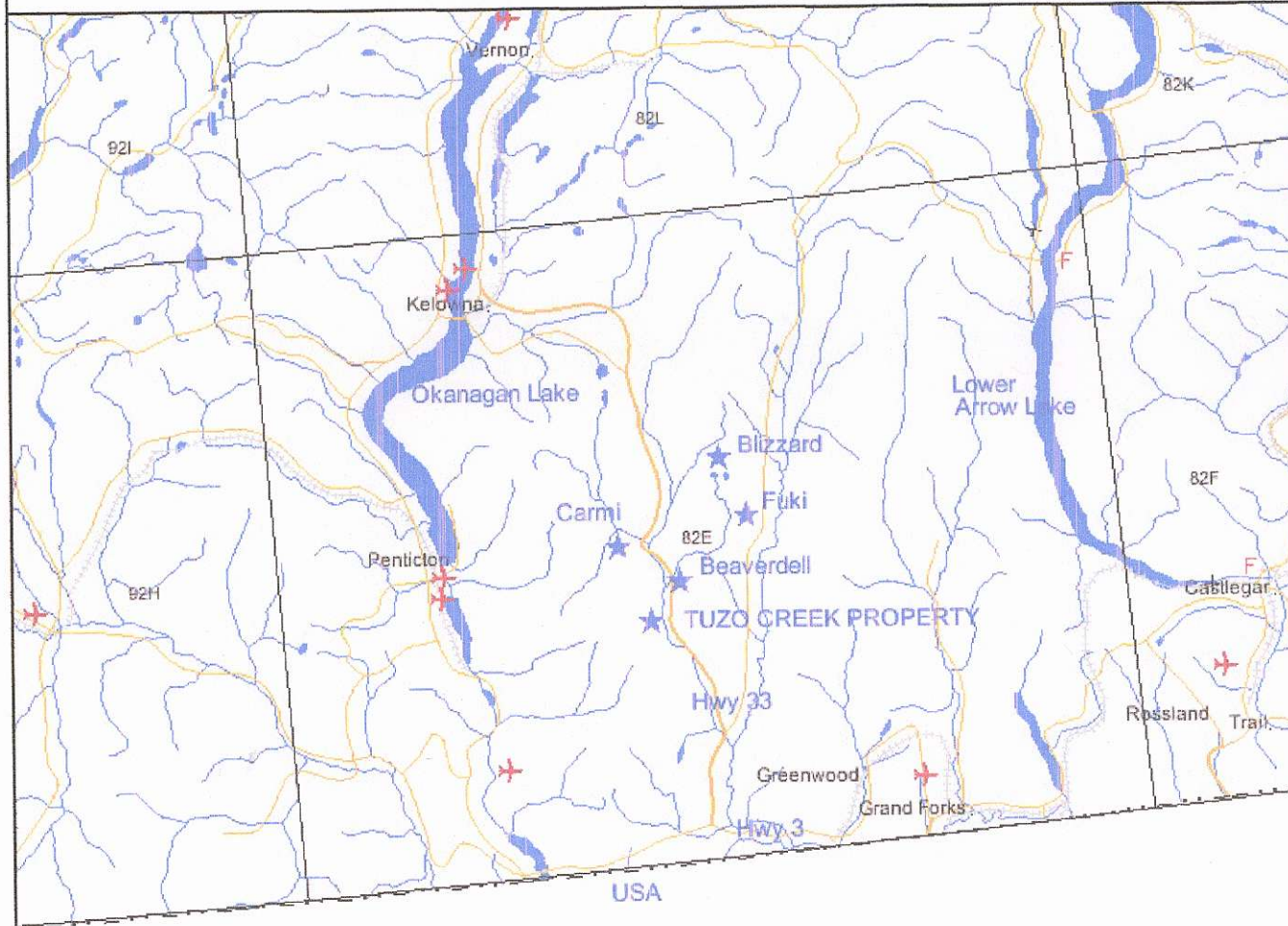
DO NOT USE FOR NAVIGATION

0 179km

Map Center: 123°26' W, 51°53' N

Figure 2 - Location - Tuzo Creek Property

Legend



	Provincial Boundary (1:2M)
	Boundary (International)
	Boundary (Interprovincial)
	NTS Grid
Transportation - Points (1:2M)	
	Airstrip
	Ferry Route
	Seaplane Custom Port
Transportation - Lines (1:2M)	
	Ferry Route
	Road - Trunk
	Road - Main
	Road - Local
	Bridge
	Rail Line
Water - Points (1:2M)	
	Falls
	Dam
Water - Lines (1:2M)	
	River/Stream - Definite
	River/Stream - Left Bank
	River/Stream - Right Bank
	Dam
	Lake - Definite
	Icefield
	Island - Definite
	Coastline - Definite
Water - Polygons (1:2M)	
	River/Stream - Definite
	Lake - Definite
	Island - Definite
	Major Cities

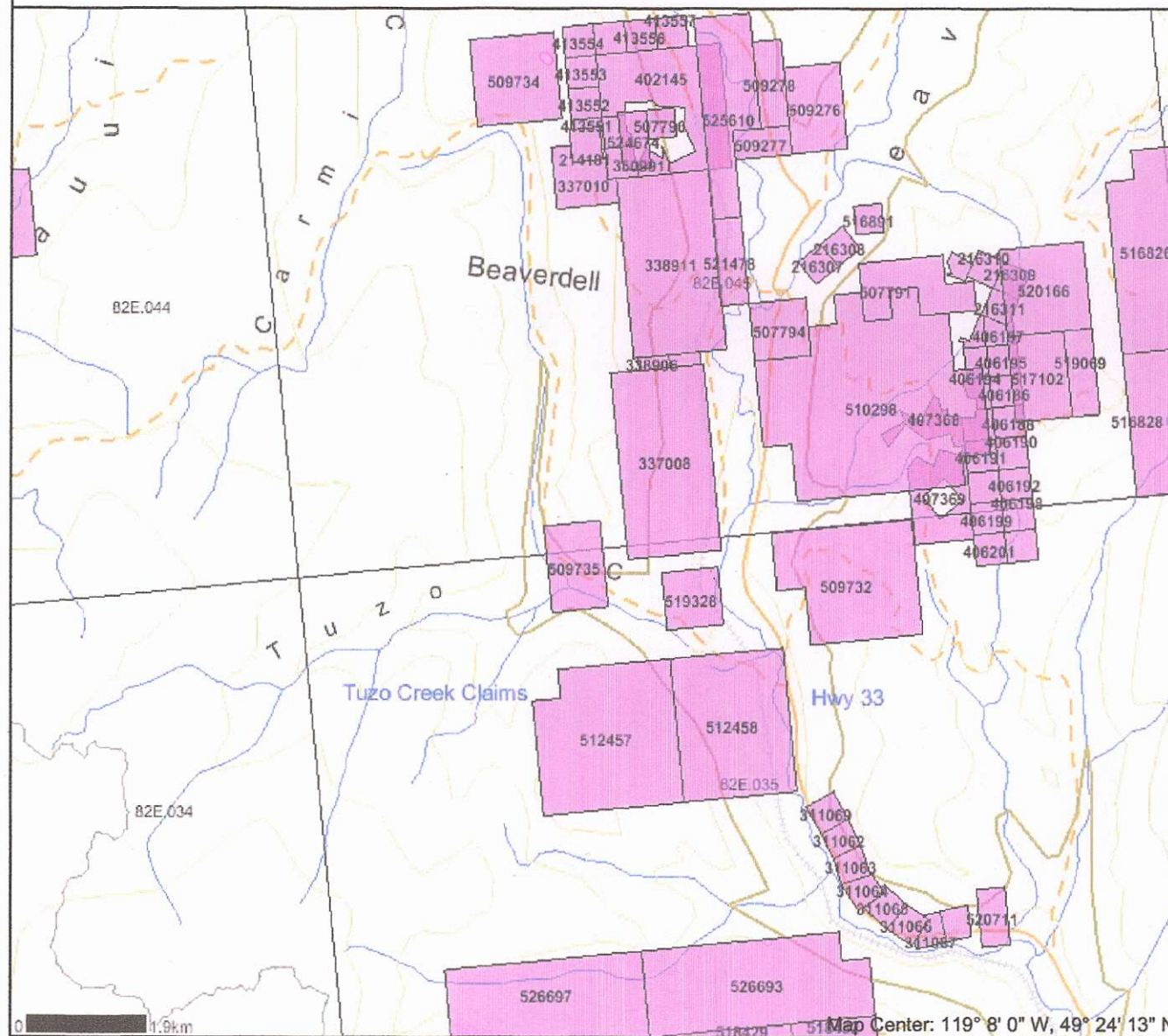
0 22km

Map Center: 119°6' W, 49°26' N

Scale: 1:1,177,178
DO NOT USE FOR NAVIGATION

Figure 3 - Tuzo Creek Property

Legend



- Indian Reserves
- National Parks
- Parks
- Mineral Tenures
- Reserves (Sites)
- Placer Claim Designation
- Placer Lease Designation
- No Staking Reserve
- Conditional Reserve
- Release Required Reserve
- Surface Restriction
- Recreation Area
- Others
- Mining Divisions
- BCGS Grid
- Contours (1:250K)
- Contour - Index
- Contour - Intermediate
- Area of Exclusion
- Area of Indefinite Contours
- Annotation (1:250K)
- Transportation - Points (1:250K)
- Airfield
- Anchorage - Seaplane
- Ferry Route
- Heliport
- Seaplane Base
- Air Field
- Airport
- Air Feature - Condition Unknown
- Airport: Abandoned
- Transportation - Lines (1:250K)
- Ferry Route
- Aerial Cableway
- Road (Gravel Undivided) - 1 Lane
- Road (Gravel Undivided) - 3 Lanes
- Road - Paved, lanes, 2 or More, Divided
- Road (Paved Undivided) - Not Elevated - 1 Lane
- Road (Paved Undivided) - Not Elevated - 2 Lanes
- Road - Paved, lanes, 3 or More, Undivided
- Road (Unimproved)
- Road - Loose access Dry Weather
- Road (Winter Road)
- Road - Paved, lanes, 2, Undivided
- Road - Paved, lanes, 2, Undivided, U/C
- Road - Paved, Divided, access, Non Standard
- Track - Cart/Tractor
- Causeway (Railway)
- Cut (Roadway)
- Trail
- Tunnel

Scale: 1:100,000

DO NOT USE FOR NAVIGATION

1.9 km

Map Center: 119° 8' 0" W, 49° 24' 13" N