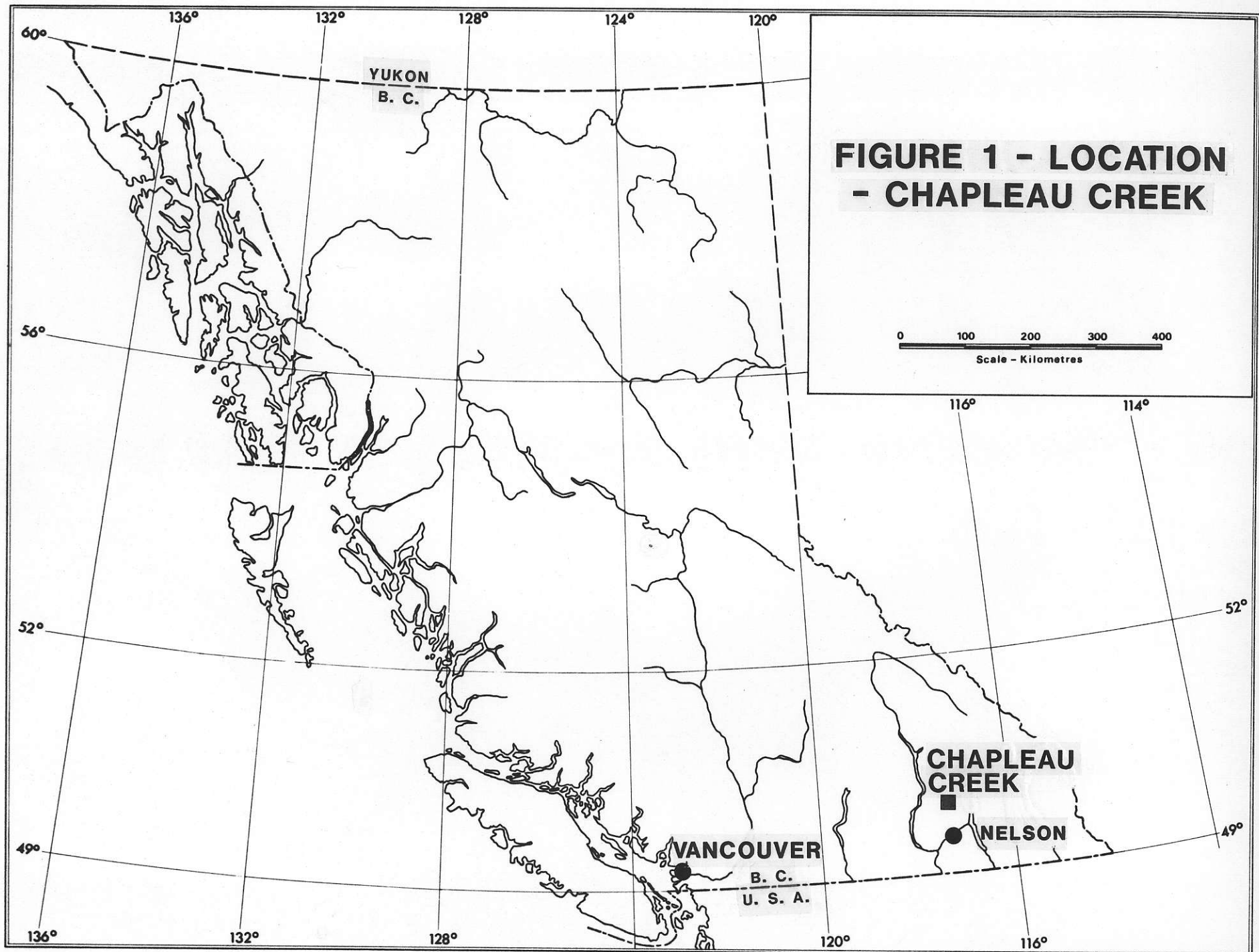


830515



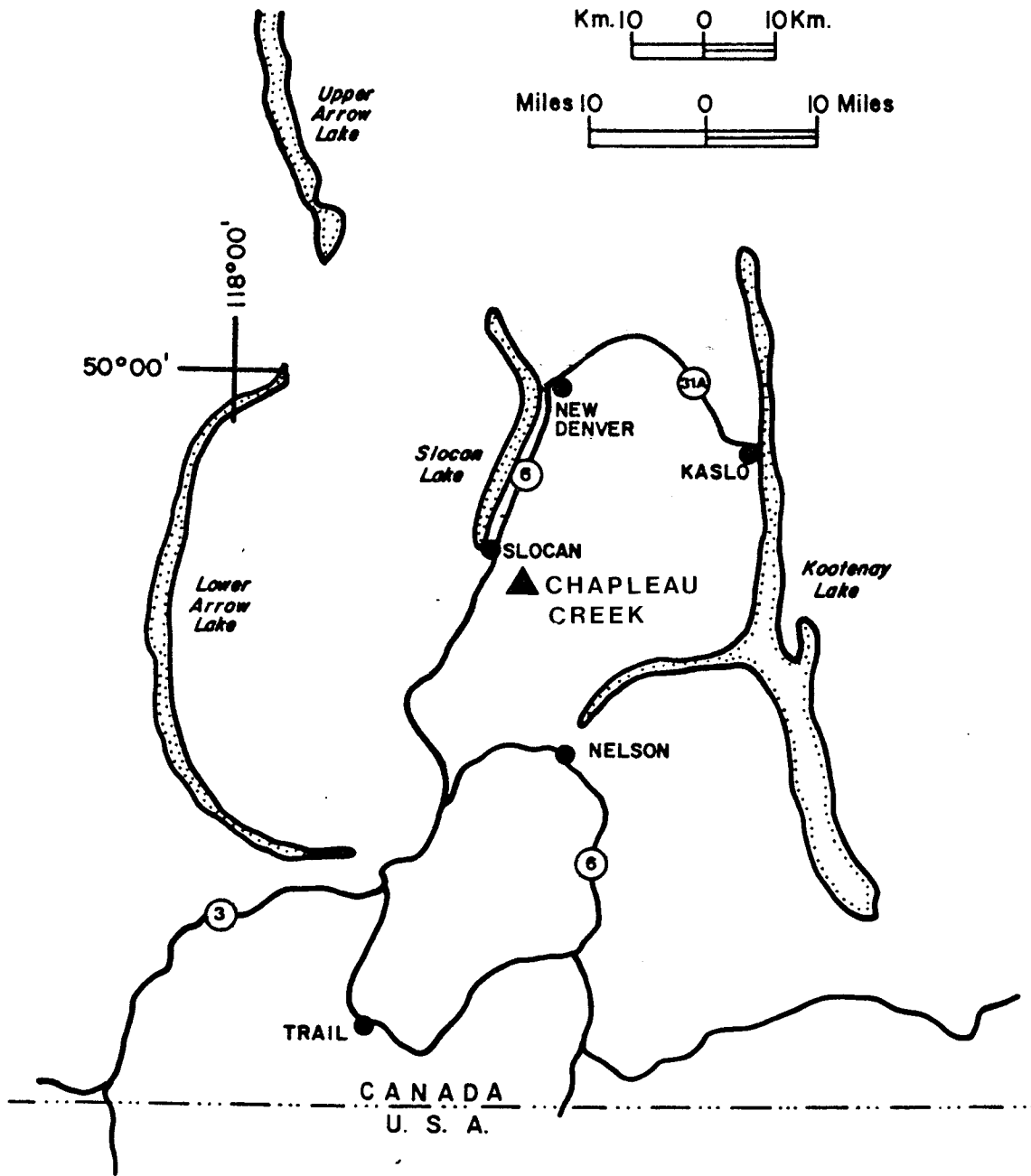


FIGURE 2 - LOCATION - CHAPLEAU CREEK PROPERTY

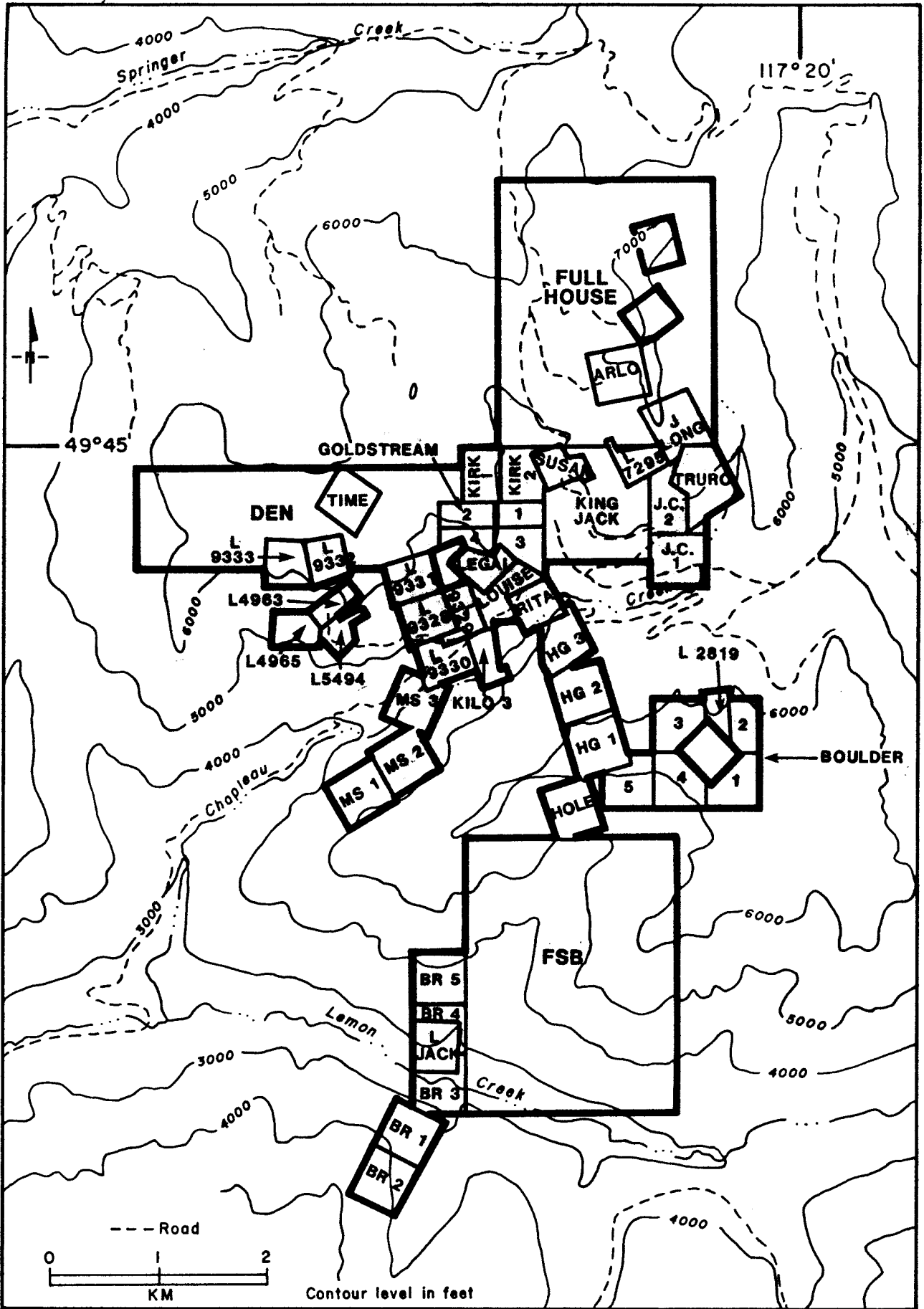
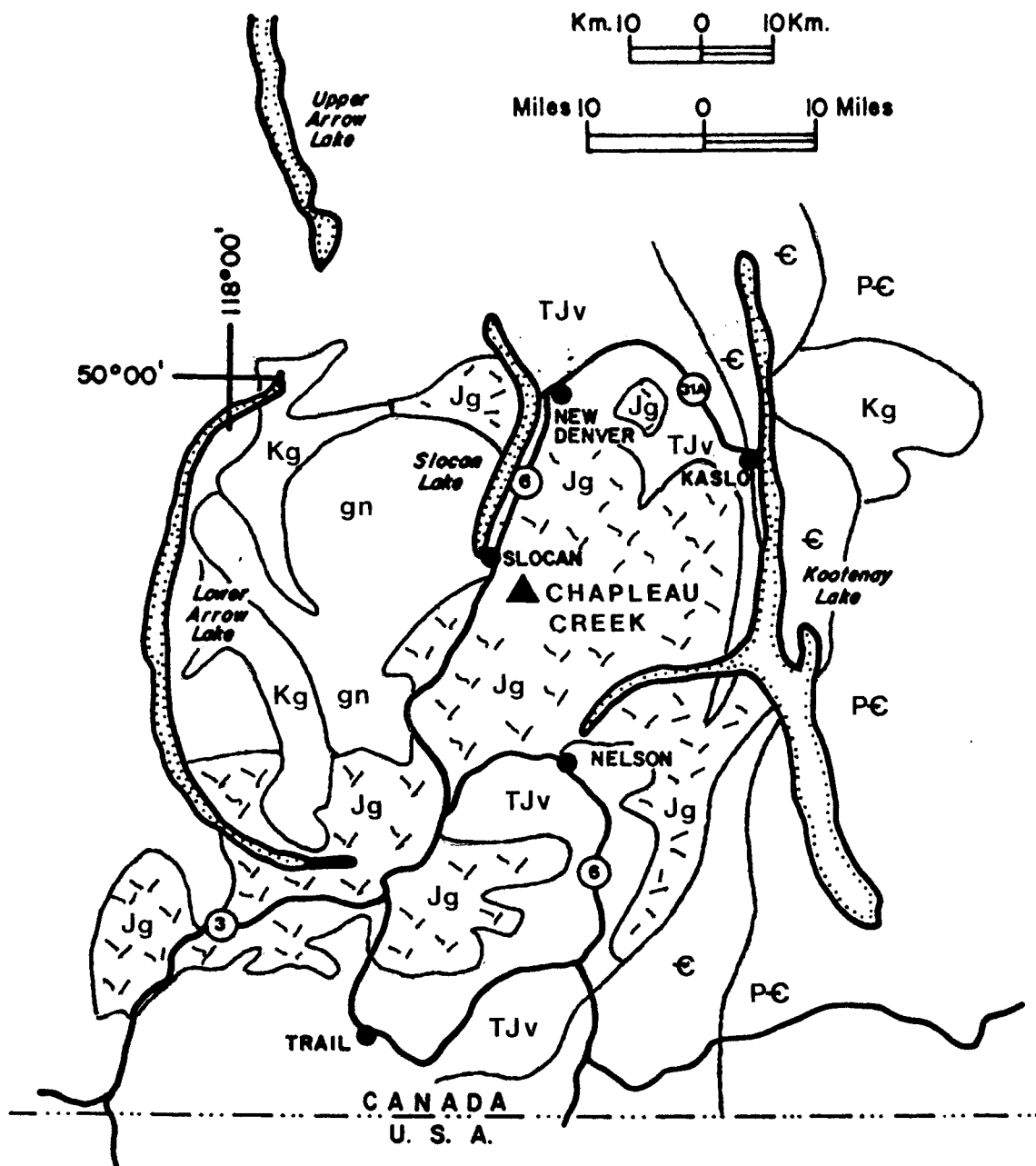


FIGURE 3 - MINERAL CLAIMS - CHAPLEAU CREEK



- | | |
|-----|--|
| Kg | Cretaceous granitic rocks |
| Jg | Jurassic granitic rocks - "Nelson batholith" |
| gn | Valhalla gneisses |
| TJv | Mesozoic volcanics and sediments |
| e | Late Precambrian - early Paleozoic sediments |
| Pe | Late Precambrian sedimentary rocks |

FIGURE 4- GEOLOGICAL SETTING (after GSC Map 1505A)

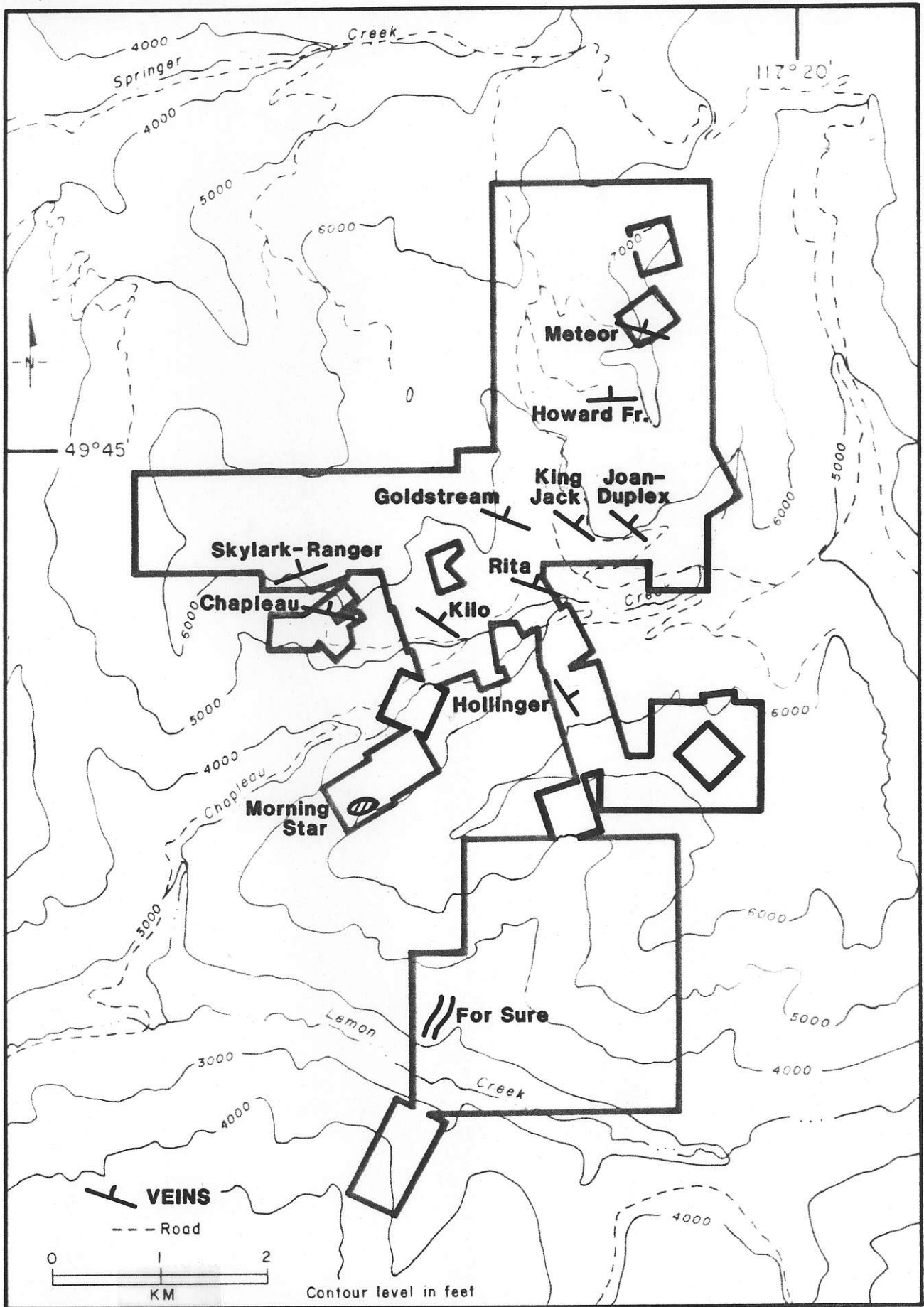
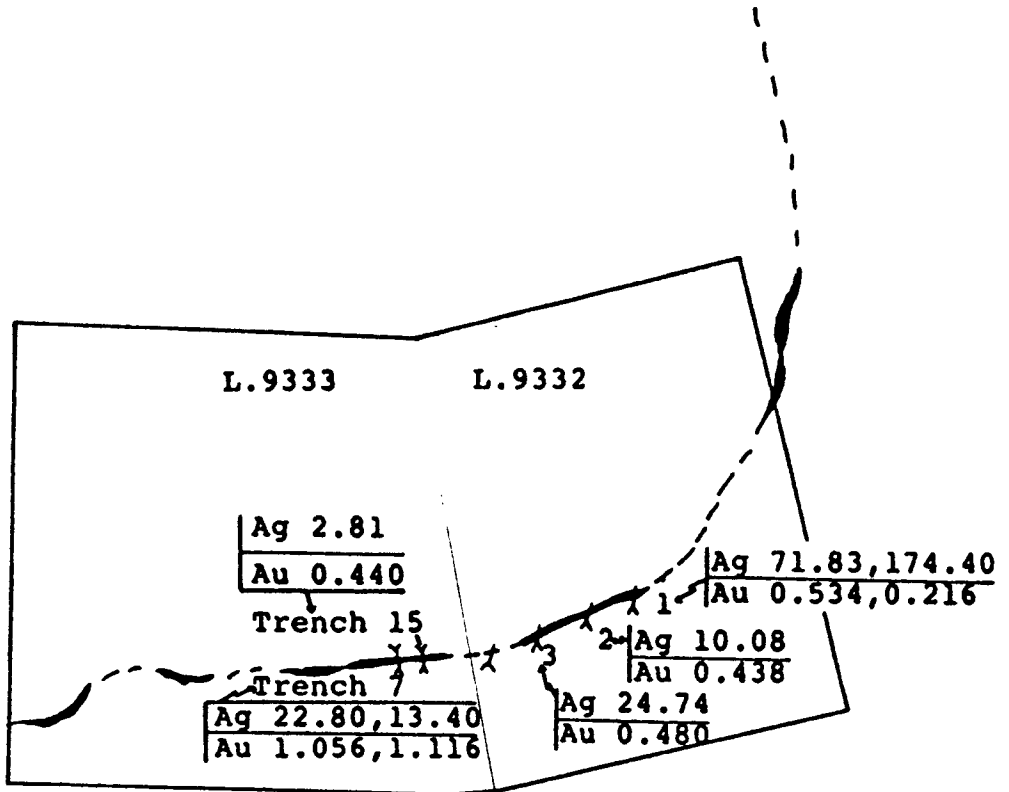
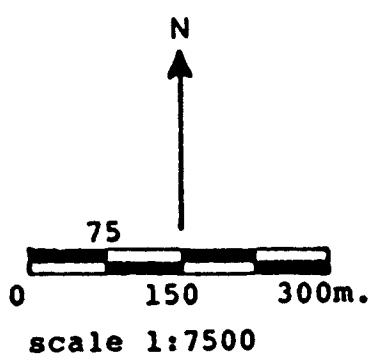


FIGURE 5 - MINERAL ZONES - CHAPLEAU CREEK



Adit 5-Ag 6.85 Au 0.166

'DEN' South Claim Boundry (approximate)



SKYLARK/RANGER PROPERTY - SLOCAN M.D.		
KILO GOLD MINES LTD.		
Assay Plan Values in oz./ton		
Monashee Geological Services	nts:82F/11W Nov.25/86	Fig. no. 6

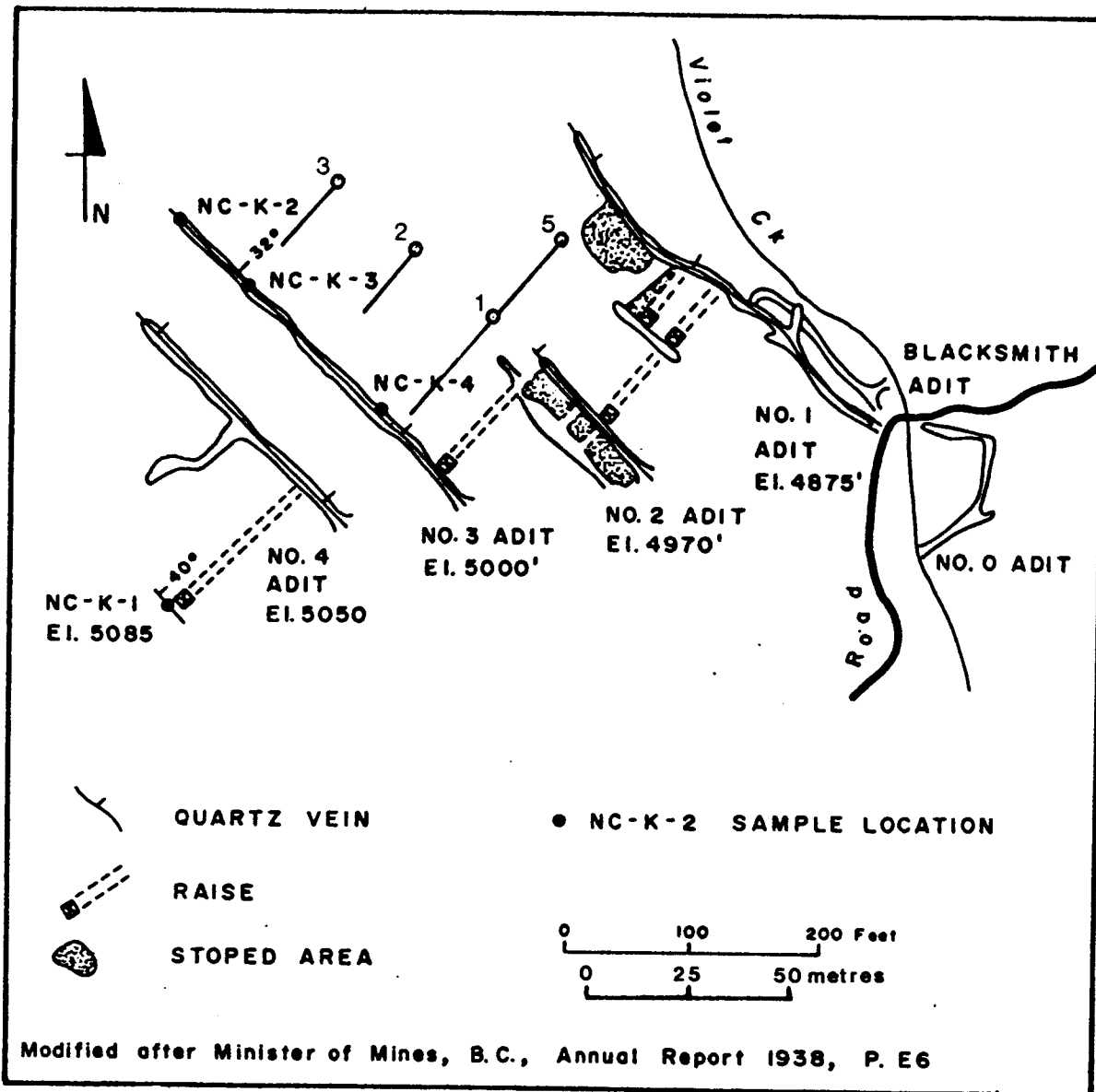


FIGURE 7 KILO UNDERGROUND WORKINGS

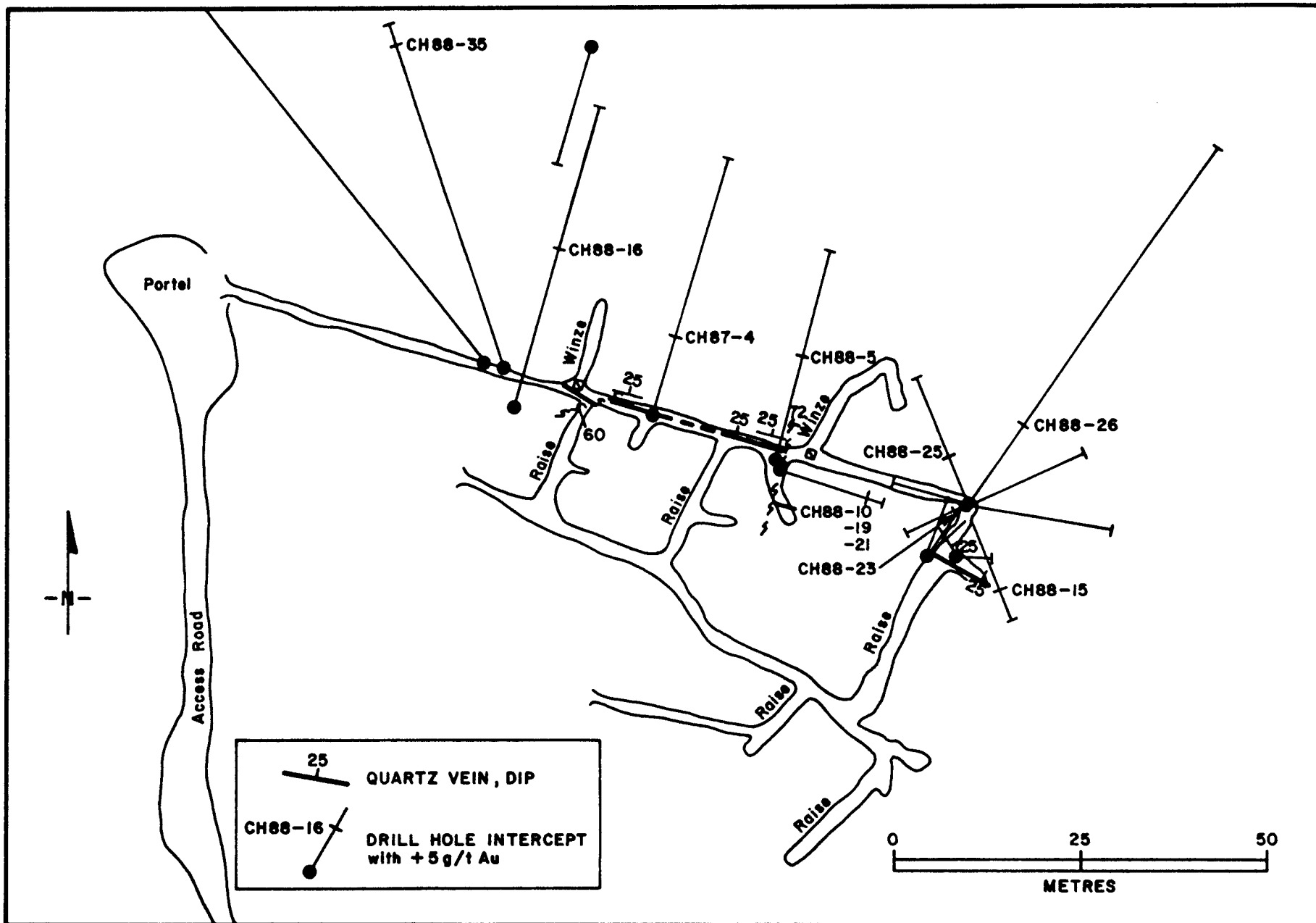


FIGURE 8 - CHAPLEAU No. 3 ADIT LEVEL - DRILL HOLE PLAN
 (after Santos, 1989)

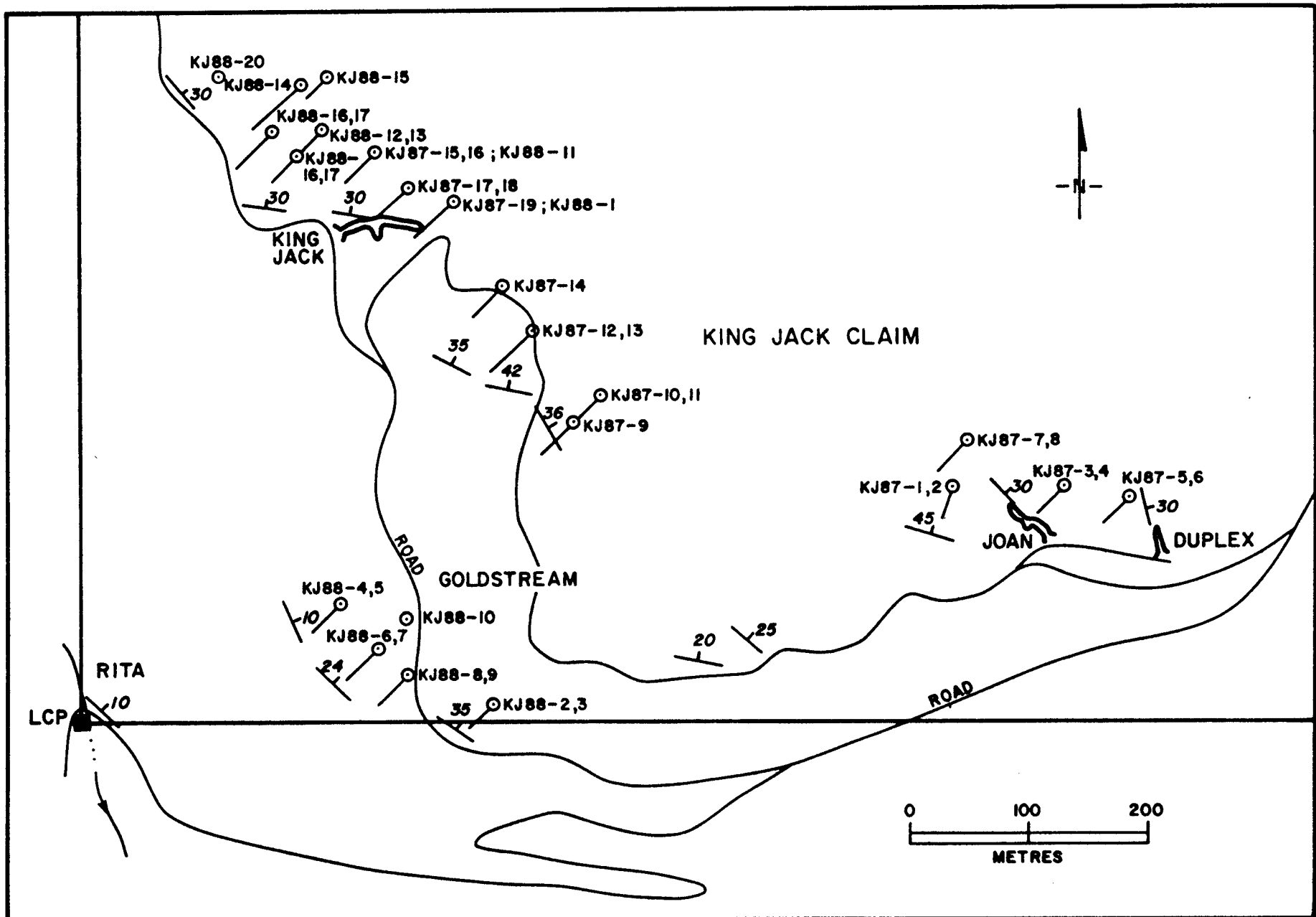


FIGURE 9 - KING JACK MINERAL CLAIM - DRILL HOLE PLAN
 (after Santos, 1988)

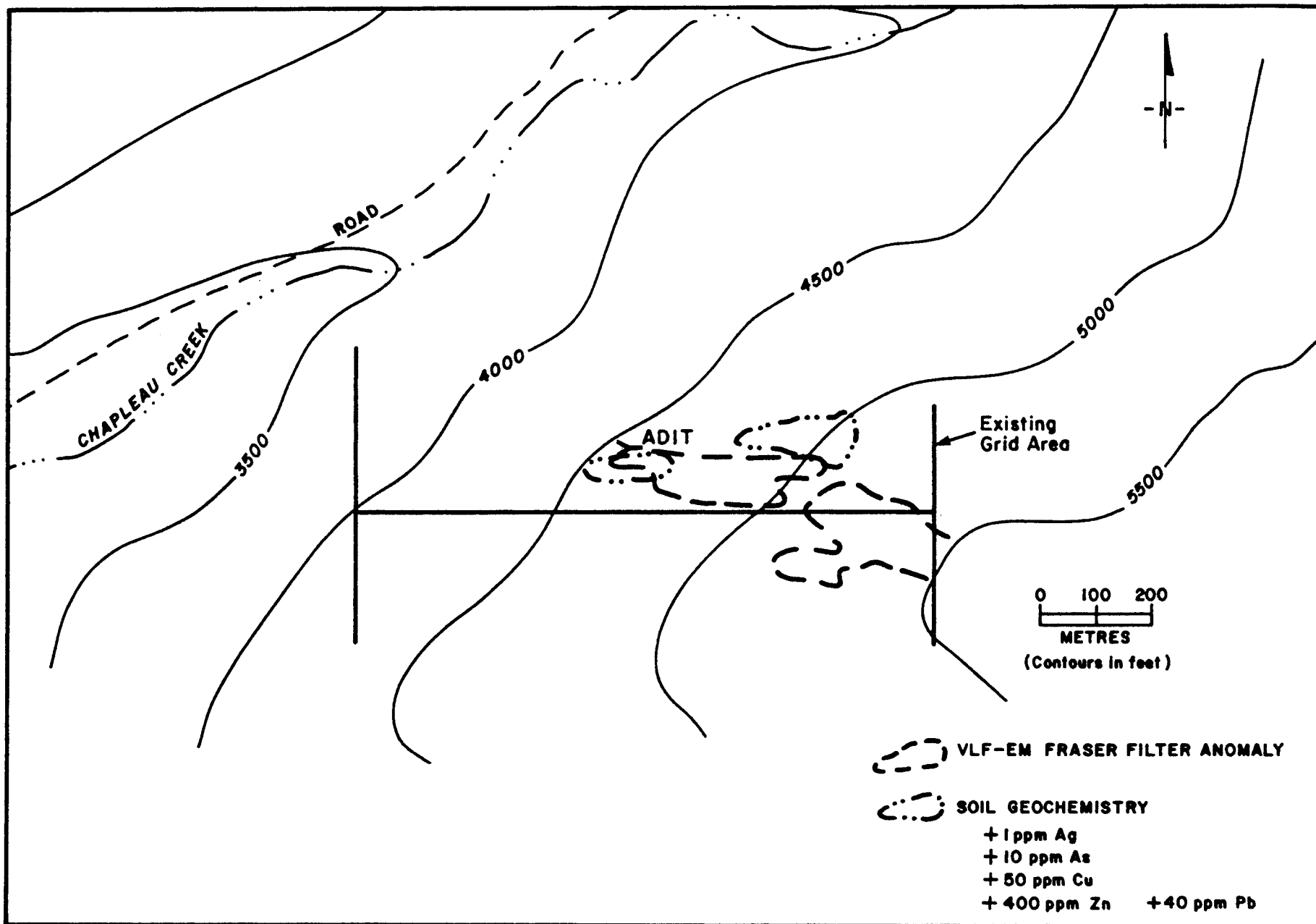


FIGURE 10 - MORNING STAR ZONE
 (after Santos, 1989)

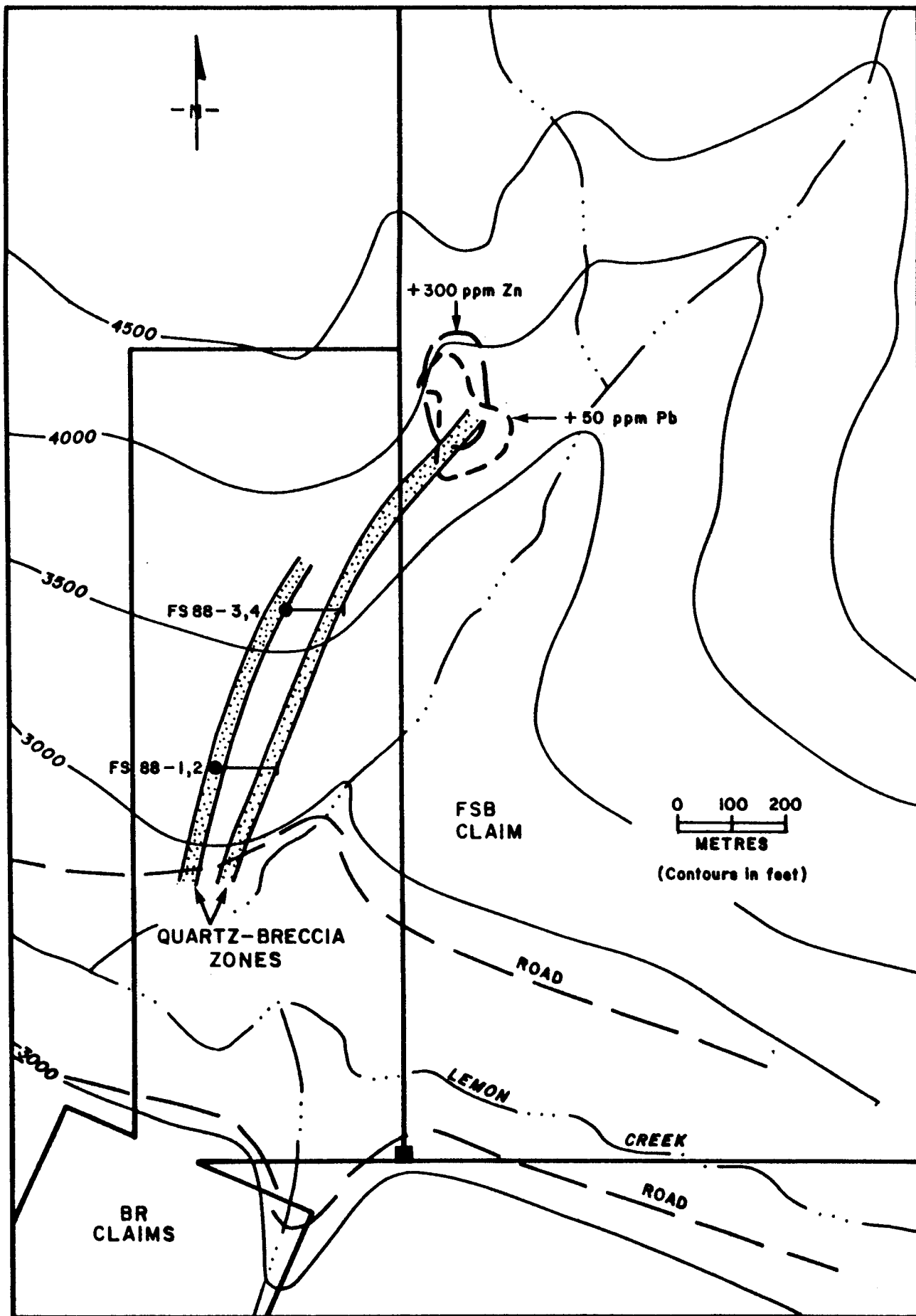


FIGURE 11 - FOR SURE ZONES
 (after Santos, 1989; Hall, 1991)