

PRELIMINARY REPORT
1993 DIAMOND DRILLING PROGRAM

KILO PROPERTY
Slocan Mining Division
British Columbia

FOR
KILO GOLD MINES LTD.

BY
N.C. CARTER, PH.D. P.ENG.

November 24, 1993

INTRODUCTION

Kilo Gold Mines Ltd. completed a diamond drilling program on the Kilo property between October 6 and 17, 1993. The program consisted of four inclined holes totalling 175.9 metres (577 feet) and was carried out by Neill Mining Company of Victoria, B.C.

Drill core was transported to Victoria where it was logged and sampled by the writer.

PROGRAM OBJECTIVES

The program was directed to a previously unexplored part of the Kilo property and was designed to test the Kilo vein between 25 and 40 metres down-dip from No. 3 level and over a strike length of 100 metres (see Figure 1).

PROGRAM RESULTS

The Kilo vein structure was definitely identified in three (K93-1, -2, -5) of the four holes drilled.

Unlike the vein seen in No. 3 level adit and elsewhere, no typical sericite-pyrite alteration selvages were noted marginal to vein contacts in drill core. Rather, "tight" contacts with host Nelson porphyritic granodiorite (at 70 to core axes) were noted and most veins were aplitic to pegmatitic in composition with a fair amount of fine to

coarse grained pink feldspar plus some muscovite and/or biotite noted.

Analytical results are included in table form at the end of this report. Better gold values in holes K93-1 and -5 (365 ppb - 0.01 oz/ton and 69ppb - 0.002 oz/ton respectively) were associated with quartz veining and silicified granitic wallrock. There was evidence of core loss in both of these holes; only 60% recovery of the 4.8 ft. section in K93-5 was achieved and some quartz cave was noted. With the exception of the aforementioned intersection in hole K93-5 which contained between 10 and 15% disseminated pyrite, only minor sulphide mineralization was noted in drill core.

Several quartz-feldspar veins were intersected in each of the four holes completed. Samples were collected from all vein structures but most contained negligible values.

Complete analytical results (appended) indicate that in addition to enhanced gold values, other diagnostic features of the principal or Kilo vein structure include elevated values for the following elements:

Ag, Al, Ba, Fe, K, Mn, P, Pb, Zn (Ca, Cd)

Enhanced values for the foregoing elements were noted for vein intersections in holes K93-1 and -5 and also K93-2 which contained 65 ppb (0.002 oz/ton) gold.

The main vein was possibly intersected in hole K93-3

between 113.3 and 115.1 feet. This section contained no elevated gold or silver but did have some weakly enhanced lead, zinc and iron.

In my opinion, this is not the main structure. As illustrated on the drill sections (Figures 2, 3, 4) holes K93-1, -2, and -5 intersected the main vein immediately below the vein trace while the hole K93-3 intersection is above the vein trace. It is entirely possible that this hole was not drilled deep enough to intersect the main structure. Hole depth was 136.6 ft. or about where I estimated the vein to be in my October 12 memo - I also recommended that this hole be drilled to 150 ft.

CONCLUSIONS AND RECOMMENDATIONS

1993 drill hole intercepts are shown on the appended longitudinal projection (Figure 5) relative to existing underground workings. Also plotted are averaged results of detailed sampling of No. 3 level carried out by Saltair Excavating in 1979 which demonstrate the erratic distribution of gold values within the structure.

While gold values obtained from the recent drilling program are low, the program did demonstrate structural continuity of the Kilo vein within a previously untested area. It is believed that hole K93-3 was not drilled deep

enough and additional drilling below and along strike to the northeast of hole K93-3 is recommended. Shallow inclined holes along strike from the end of Nos. 3 and 4 adits should also be considered.

The 1993 drilling program can be used for assessment work purposes - a short report incorporating hole logs will be required as will an itemized cost statement.

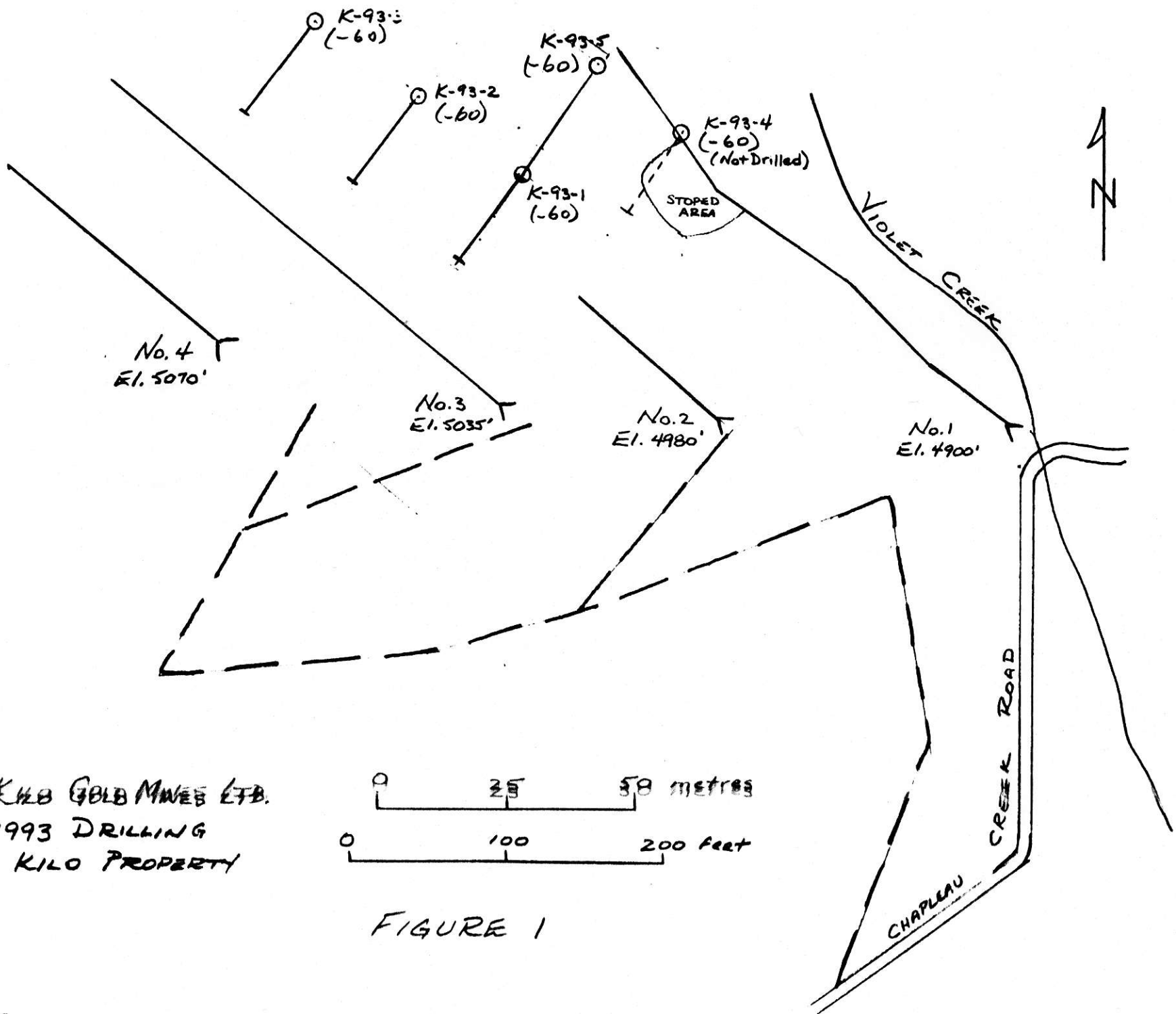
KILO DRILLING RESULTS

Hole	Interval(ft)	Width(ft)	Au(ppb)	Ag(ppm)	Pb(ppm)	Zn(ppm)
K93-1	79.2 - 81.2	2.0	5	0.2	6	18
	89.5 - 90.2	0.7	5	0.2	14	12
	* 111.5 - 113.5	2.0	365	1.6	138	208
K93-2	38.0 - 38.9	0.9	<20	0.2	16	14
	62.0 - 63.0	1.0	<20	0.2	10	30
	87.4 - 89.3	1.9	5	0.2	10	46
	105.5 - 107.0	1.5	5	0.2	16	18
	* 117.0 - 118.0	1.0	65	0.2	2	64
K93-3	62.9 - 64.3	1.4	5	0.2	22	16
	86.8 - 87.8	1.0	5	0.2	18	18
	113.3 - 115.1	1.8	5	0.2	22	32
	118.2 - 120.7	2.5	5	0.2	6	14
K93-5	24.2 - 25.0	0.8	<20	0.2	120	36
	109.7 - 110.5	0.8	<20	0.2	14	48
	151.0 - 151.8	0.8	<20	0.2	38	20
	# * 151.8 - 156.6	4.8	69	0.4	32	288
	159.4 - 162.4	3.0	<20	0.2	14	26
	162.4 - 165.0	2.6	<20	0.2	16	44

* Main Quartz Vein - includes slightly elevated Pb and Zn

Quartz Vein - 60% recovery in this section - 1.8 ft. of core lost

Note: initial results reported Au as <0.0005 oz/ton - these are reported above as <20 ppb.



KILB GOLD MINES LTD.
 1993 DRILLING
 KILO PROPERTY

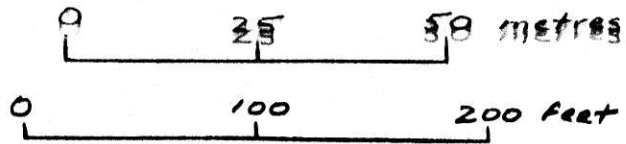
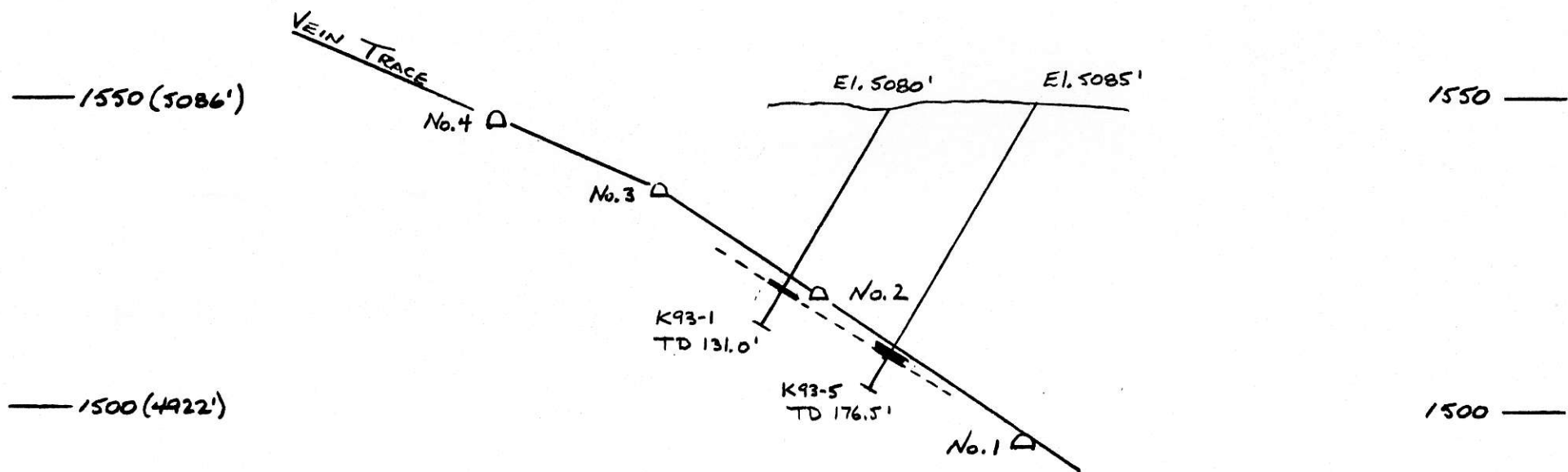


FIGURE 1



KILO PROPERTY - 1993 DRILLING
CROSS-SECTION

HOLES K93-1, -5

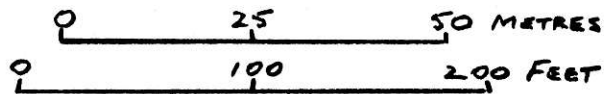
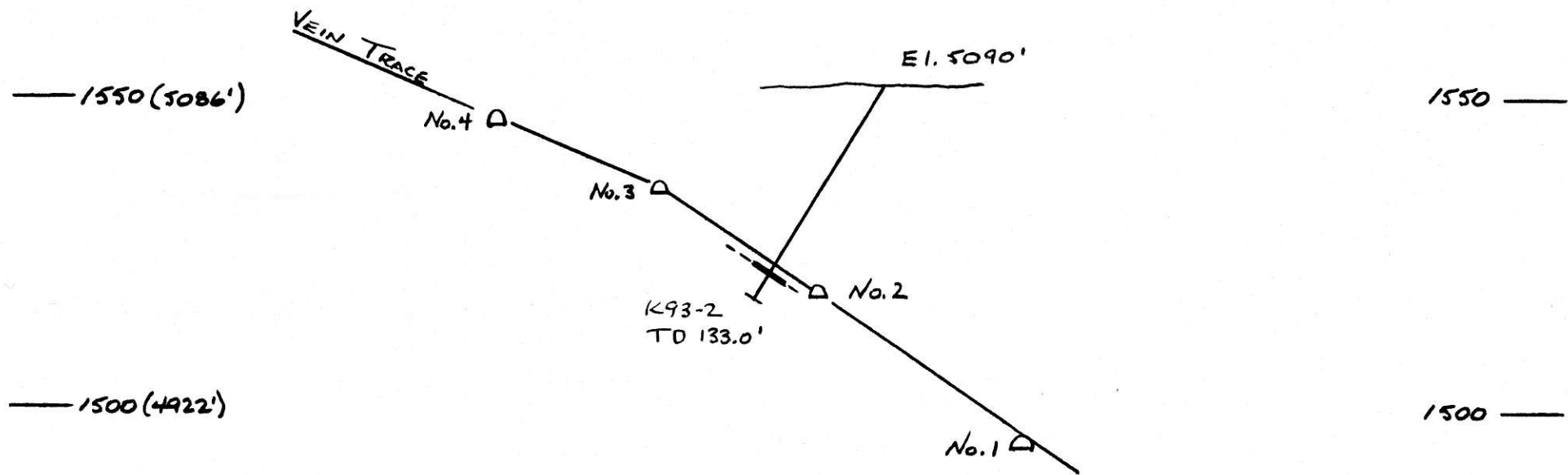


FIGURE 2



KILO PROPERTY - 1993 DRILLING
CROSS-SECTION

HOLE K93-2

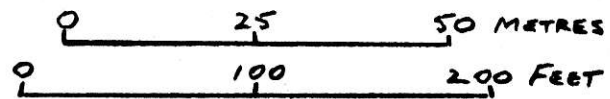
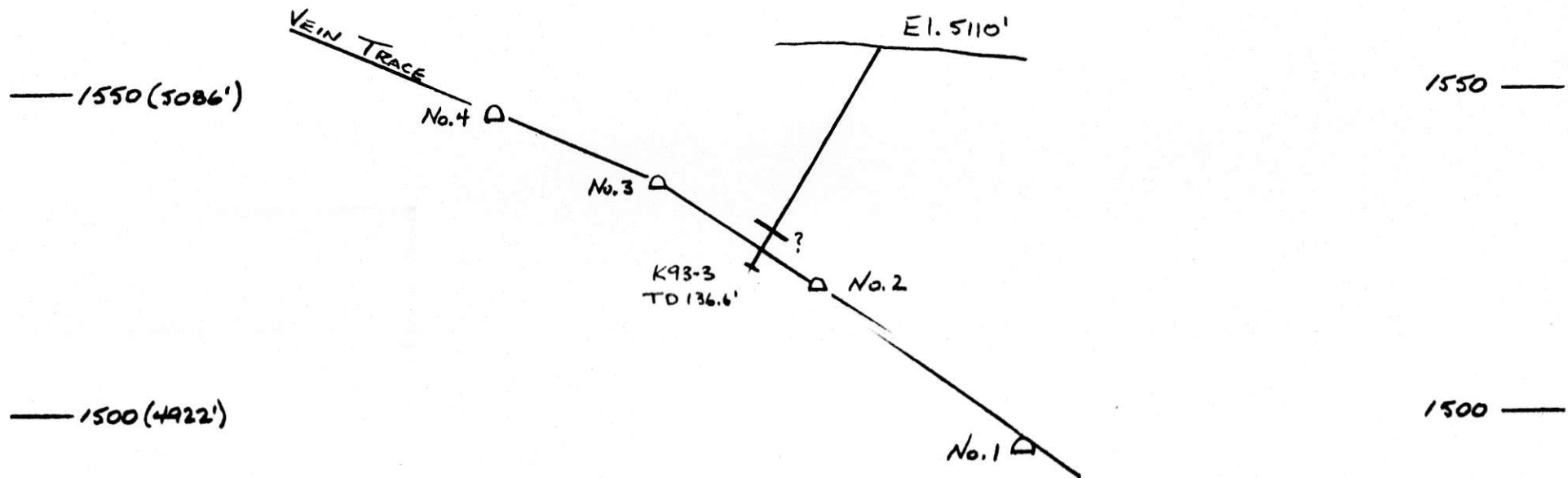


FIGURE 3



KILO PROPERTY - 1993 DRILLING
CROSS-SECTION

HOLE K93-3

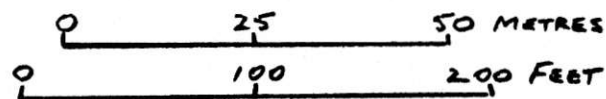
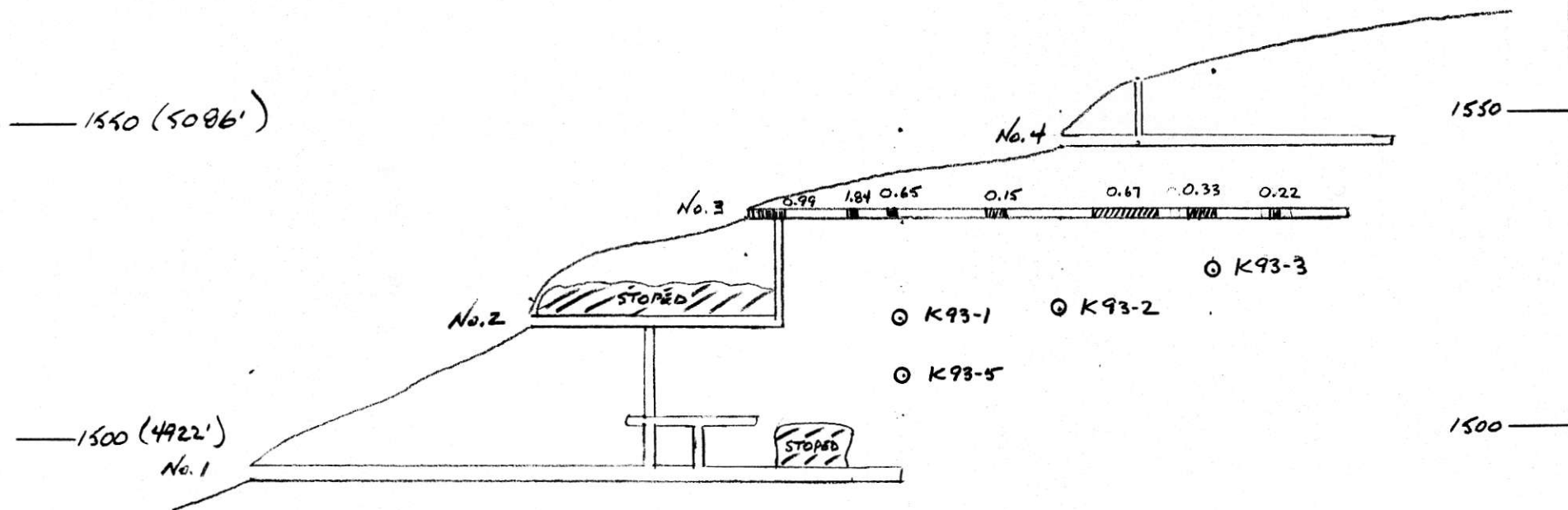


FIGURE 4



1993 DRILLING - KILO PROPERTY
LONGITUDINAL PROTECTION

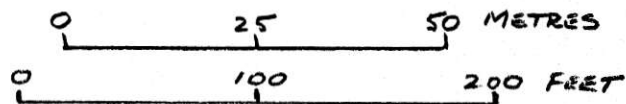


FIGURE 5

1993 KILO DRILLING PROGRAM - SAMPLE INTERVALS

<u>Hole Number</u>	<u>Sample Number</u>	<u>Interval (ft)</u>
K93-1	38733	79.2 - 81.2
	38734	89.5 - 90.2
	38735	111.5 - 117.5
K93-2	38724	38.0 - 38.9
	38725	62.0 - 63.0
	38726	87.4 - 89.3
	38727	105.5 - 107.0
	38728	117.0 - 118.0
K93-3	38729	62.9 - 64.3
	38730	86.8 - 87.8
	38731	113.3 - 115.1
	38732	118.2 - 120.7
K93-5	38718	24.2 - 25.0
	38719	109.7 - 110.5
	38720	151.0 - 151.8
	38721	151.8 - 156.6
	38722	159.4 - 162.4
	38723	162.4 - 165.0



Chemex Labs Ltd.

Analytical Chemists * Geochemists * Registered Assayers
212 Brooksbank Ave., North Vancouver
British Columbia, Canada V7J 2C1
PHONE: 604-984-0221

To: KILO GOLD MINES LTD.
203 - 920 HILLSIDE AVE.
VICTORIA, BC
V8T 1Z8

1

Page Number : 1-A
Total Pages : 1
Certificate Date: 03-NOV
Invoice No. : 193237
P.O. Number :
Account : CYX

Project :
Comments: ATTN: THOMAS E. KIRK CC: N.C. CARTE

CERTIFICATE OF ANALYSIS

A9323795

SAMPLE	PREP CODE	An oz/T FA+AA	Ag ppm	Al %	As ppm	Ba ppm	Ba ppm	Bi ppm	Ca %	Cd ppm	Co ppm	Cr ppm	Cu ppm	Fe %	Ga ppm	Hg ppm	K %	La ppm	Mg %	Mn ppm
38718	205 274	<0.0005	0.2	0.27	< 2	20	< 0.5	< 2	0.03	< 0.5	< 1	55	20	0.58	< 10	< 1	0.16	< 10	0.08	90
38719	205 274	<0.0005	< 0.2	0.80	< 2	120	< 0.5	< 2	0.19	< 0.5	3	82	6	1.49	< 10	< 1	0.59	10	0.35	270
38720	205 274	<0.0005	< 0.2	0.22	< 2	< 10	< 0.5	< 2	0.03	< 0.5	< 1	55	6	0.30	< 10	< 1	0.16	< 10	0.03	160
38721	205 274	0.0020	0.4	0.95	2	50	< 0.5	< 2	1.66	6.5	5	35	6	2.25	< 10	< 1	0.34	10	0.42	600
38722	205 274	<0.0005	< 0.2	0.39	< 2	10	< 0.5	< 2	0.59	< 0.5	< 1	73	8	0.58	< 10	< 1	0.20	< 10	0.07	175
38723	205 274	<0.0005	0.2	0.50	2	10	< 0.5	< 2	0.41	< 0.5	1	80	13	0.92	< 10	< 1	0.21	10	0.11	250
38724	205 274	<0.0005	< 0.2	0.32	< 2	20	< 0.5	< 2	0.05	< 0.5	< 1	61	5	0.46	< 10	< 1	0.24	< 10	0.06	125
38725	205 274	<0.0005	< 0.2	0.34	< 2	20	< 0.5	< 2	0.06	< 0.5	< 1	88	3	0.48	< 10	< 1	0.21	< 10	0.06	250

CERTIFICATION:

Thomas E. Kirk



Chemex Labs Ltd.

Analytical Chemists * Geochemists * Registered Assayers
212 Brooksbank Ave., North Vancouver
British Columbia, Canada V7J 2C1
PHONE: 604-984-0221

To: KILO GOLD MINES LTD.
203 - 920 HILLSIDE AVE.
VICTORIA, BC
V8T 1Z8



Page Number : 1-B
Total Pages : 1
Certificate Date: 03-NOV-93
Invoice No. : 19323795
P.O. Number :
Account : CYX

Project :
Comments: ATTN: THOMAS E. KIRK CC: N.C. CARTE

CERTIFICATE OF ANALYSIS

A9323795

SAMPLE	PREP CODE		No	Na	Ni	P	Pb	Sb	Sc	Sr	Ti	Tl	U	V	W	Zn
			ppm	%	ppm	ppm	ppm	ppm	ppm	ppm	%	ppm	ppm	ppm	ppm	ppm
38718	205	274	1	0.03	1	20	120	< 2	< 1	9	0.01	< 10	< 10	3	< 10	36
38719	205	274	< 1	0.04	2	420	14	< 2	2	14	0.10	< 10	< 10	22	< 10	48
38720	205	274	< 1	0.04	1	20	38	< 2	< 1	3	< 0.01	< 10	< 10	1	< 10	20
38721	205	274	1	0.01	2	890	32	< 2	1	91	< 0.01	< 10	< 10	14	< 10	288
38722	205	274	< 1	0.06	1	110	14	< 2	< 1	29	< 0.01	< 10	< 10	3	< 10	26
38723	205	274	< 1	0.08	2	190	16	< 2	< 1	25	< 0.01	< 10	< 10	6	< 10	44
38724	205	274	< 1	0.06	1	60	16	< 2	< 1	4	0.02	< 10	< 10	4	< 10	14
38725	205	274	< 1	0.09	2	70	10	< 2	2	3	0.01	< 10	< 10	4	< 10	30

CERTIFICATION:

Thai D Ma



Chemex Labs Ltd.

Analytical Chemists * Geochemists * Registered Assayers
212 Brooksbank Ave., North Vancouver
British Columbia, Canada V7J 2C1
PHONE: 604-984-0221

To: KILO GOLD MINES LTD.

203 - 920 HILLSIDE AVE.
VICTORIA, BC
V8T 1Z8

2

Page Number : 1-A
Total Pages : 1
Certificate Date: 17-NOV-9
Invoice No. : 19324519
P.O. Number :
Account : CYX

Project :
Comments: ATTN: THOMAS W. KIRK

CERTIFICATE OF ANALYSIS A9324519

SAMPLE	PREP CODE	Au ppb FA+AA	Ag ppm	Al %	As ppm	Ba ppm	Be ppm	Bi ppm	Ca %	Cd ppm	Co ppm	Cr ppm	Cu ppm	Fe %	Ga ppm	Hg ppm	K %	La ppm	Mg %	Mn ppm
38726	205 274	< 5	< 0.2	0.69	2	110	< 0.5	< 2	0.16	< 0.5	2	73	6	1.39	< 10	< 1	0.48	10	0.29	305
38727	205 274	< 5	< 0.2	0.29	2	20	< 0.5	2	0.05	< 0.5	1	104	14	0.61	< 10	< 1	0.20	< 10	0.06	135
38728	205 274	65	< 0.2	1.11	< 2	200	< 0.5	< 2	0.23	< 0.5	3	75	1	2.07	< 10	< 1	0.82	20	0.50	440
38729	205 274	< 5	< 0.2	0.25	< 2	< 10	0.5	< 2	0.03	< 0.5	< 1	123	1	0.33	< 10	< 1	0.14	< 10	0.01	730
38730	205 274	< 5	< 0.2	0.28	< 2	10	< 0.5	< 2	0.06	< 0.5	< 1	93	< 1	0.41	< 10	< 1	0.13	10	0.05	135
38731	205 274	< 5	0.2	0.27	< 2	< 10	0.5	< 2	0.09	< 0.5	1	108	5	1.05	< 10	< 1	0.13	10	0.02	365
38732	205 274	< 5	< 0.2	0.26	2	< 10	< 0.5	< 2	0.06	< 0.5	< 1	100	1	0.40	< 10	< 1	0.09	< 10	0.03	105
38733	205 274	< 5	< 0.2	0.39	< 2	20	< 0.5	< 2	0.08	< 0.5	< 1	91	7	0.65	< 10	< 1	0.23	< 10	0.11	125
38734	205 274	< 5	< 0.2	0.21	< 2	< 10	< 0.5	< 2	0.03	< 0.5	< 1	79	10	0.41	< 10	< 1	0.09	< 10	0.02	140
38735	205 274	365	1.6	0.85	2	60	0.5	< 2	0.34	3.0	3	76	1	1.79	< 10	< 1	0.38	20	0.26	440

CERTIFICATION:

Hart Buchler



Chemex Labs Ltd.

Analytical Chemists * Geochemists * Registered Assayers
212 Brooksbank Ave., North Vancouver
British Columbia, Canada V7J 2C1
PHONE: 604-984-0221

To: KILO GOLD MINES LTD.

203 - 920 HILLSIDE AVE.
VICTORIA, BC
V8T 1Z8

2

Page Number : 1-B
Total Pages : 1
Certificate Date : 17-NOV-9
Invoice No. : 19924519
P.O. Number :
Account : CYX

Project :
Comments: ATTN: THOMAS W. KIRK

CERTIFICATE OF ANALYSIS

A9324519

SAMPLE	PREP CODE	Ko ppm	Na %	Ni ppm	P ppm	Pb ppm	Sb ppm	Sc ppm	Sr ppm	Ti %	Tl ppm	U ppm	V ppm	W ppm	Zn ppm
38726	205 274	< 1	0.04	1	350	10	< 2	2	8	0.09	< 10	< 10	17	< 10	46
38727	205 274	< 1	0.05	1	60	16	< 2	< 1	3	0.02	< 10	10	3	< 10	18
38728	205 274	1	0.06	2	530	2	< 2	4	13	0.15	< 10	< 10	29	< 10	64
38729	205 274	< 1	0.07	1	10	22	< 2	2	2	< 0.01	< 10	< 10	< 1	< 10	16
38730	205 274	< 1	0.05	1	100	18	< 2	1	6	0.01	< 10	< 10	1	< 10	18
38731	205 274	1	0.05	1	230	22	< 2	1	6	< 0.01	< 10	10	10	< 10	32
38732	205 274	< 1	0.05	2	10	6	< 2	< 1	10	< 0.01	< 10	< 10	2	< 10	14
38733	205 274	< 1	0.05	1	110	6	< 2	< 1	9	0.04	< 10	< 10	6	< 10	18
38734	205 274	< 1	0.05	1	10	14	< 2	< 1	2	< 0.01	< 10	< 10	1	< 10	12
38735	205 274	1	0.02	1	640	138	< 2	1	18	0.01	< 10	< 10	8	< 10	208

CERTIFICATION: *Hart Bechler*