

830492

GEOLOGICAL REPORT

ON THE

MACKTUSH PROPERTY

Alberni Inlet
Alberni Mining Division
Vancouver Island
British Columbia

Latitude 49°08' North
Longitude 124°52' West
NTS 92F/2W

FOR

SYMC RESOURCES LTD.

BY

N.C. CARTER, PH.D. P.ENG.

~~July 16, 1990~~

June 13/91

N.C. CARTER, Ph.D., P.Eng.
CONSULTING GEOLOGIST

TABLE OF CONTENTS

	Page
SUMMARY	1
INTRODUCTION	2
LOCATION AND ACCESS	2
MINERAL PROPERTY	3
PHYSICAL FEATURES	4
HISTORY	4
REGIONAL GEOLOGY AND MINERALIZATION	6
PROPERTY GEOLOGY AND MINERALIZATION	10
CONCLUSIONS	17
RECOMMENDATIONS	18
COST ESTIMATE	21
REFERENCES	22
CERTIFICATE	24
Appendix I - Analytical Results - Surface Sampling	25
Appendix II - Diamond Drilling Data	26

List of Figures

	Following Page
Figure 1 - Location	1
Figure 2 - Location - Macktush Property	2
Figure 3 - Macktush Property Mineral Claims	3
Figure 4 - Geological Setting	7
Figure 5 - Macktush Property - Geology	11
Figure 6 - Principal Mineral Showings-COPPER 102 Claim	13
Figure 7 - Diamond Drill Hole Plan-Fred Vein	15
Figure 8 - Diamond Drill Hole Cross-Sections	16

SUMMARY

SYMC Resources Ltd. owns the Macktush gold prospect which is situated south of Port Alberni on Vancouver Island.

The company's 10 Modified Grid mineral claims cover a northwest trending contact between Island Intrusions granitic rocks and Karmutsen Formation volcanic rocks. A number of gold-bearing quartz veins have been discovered marginal to this contact in the central property area. Surface sampling of several of these structures and limited diamond drilling of one zone indicates locally good gold values across reasonable widths and additional work to test the potential of these and other possible zones is warranted.

It is recommended that an initial program consisting of base map preparation, orientation geophysics, excavator trenching, detailed surface sampling and additional diamond drilling of the principal vein structure be carried out at an estimated cost of ^{335,750}~~\$294,400.00~~. Phase II work, estimated to cost ^{623,750}~~\$546,250.00~~, would include additional diamond drilling of the principal vein structure and other veins as warranted by the results of the initial program.

INTRODUCTION

SYMC Resources Ltd. owns the Macktush property which consists of 10 Modified Grid mineral claims and is situated south of Port Alberni on Vancouver Island.

This report, prepared at the request of SYMC Resources Ltd., is based on examinations of parts of the claims area by the writer April 26 and June 20, 1990, and on results of exploration work and other studies undertaken on the property since 1982. A compilation of previous surface sampling and diamond drilling was recently completed by John Wilson, FGAC, who also supervised a survey of part of the property. These data have been incorporated into this report.

LOCATION AND ACCESS

The Macktush property is situated 10-15 km south of Port Alberni on southern Vancouver Island (Figure 1). The mineral claims are located on the west side of Alberni Inlet immediately north of Macktush Creek (Figure 2) in NTS map-area 92F/2W. The geographic centre of the property is at latitude $49^{\circ}08'$ North and longitude $124^{\circ}52'$ West.

Access to the property is by highway and road from Port Alberni by way of MacMillan Bloedel Limited Sproat Lake Woodlands Division Main roads along Cous and Macktush Creeks or a shore road along Alberni Inlet (Figure 2).

The mineral claims are situated in an active logging area and access to most parts of the property is afforded by numerous logging roads.

MINERAL PROPERTY

The Macktush property consists of 10 Modified Grid mineral claims (159 units) located in the Alberni Mining Division.

No claim posts or lines have been examined by the writer but the claims are believed to have been located in accordance with procedures as specified in the Mineral Tenure Act Regulations of the Province of British Columbia. According to Mineral Titles maps, some overlapping of several of the claims is evident.

The configuration of the mineral claims is shown on Figure 3 and details are as follows:

<u>Claim Name</u>	<u>Record Number</u>	<u>Units</u>	<u>Expiry Date</u>
COPPER 100	1909	12	October 31, 1992 ³
COPPER 101	1910	9	October 31, 1991 ²
COPPER 102	1911	16	" " 2
COPPER 103	1912	12	" " 2
COPPER 104	1913	20	" " 2
COPPER 105	1914	20	" " 2
COPPER 300	2169	20	May 25, 1991 ² "
COPPER 400	2170	20	" "
COPPER 500	2244	20	June 11, 1991 ²
COPPER 50	2474	10	February 13, 1992 ³

Recently reworked

same

PHYSICAL FEATURES

Mineral claims comprising the Macktush property cover an area of moderate to steep relief west of Alberni Inlet (Figure 3). Elevations range from sea level to 960 metres in the western claims area.

Steeper slopes are found north of Macktush Creek, above Alberni Inlet and marginal to a number of drainages flowing east to Alberni Inlet. Active logging is underway in most parts of the claims area and bedrock is well exposed along logging roads, major drainages and some of the steeper slopes.

The climate is typical of the southwest coast of Vancouver Island with abundant rainfall in the fall and winter months. Mild winters allow for work on the property most months of the year.

HISTORY

The earliest record of prospecting and mining activity west of Alberni Inlet dates back to the turn of the century when copper-gold vein occurrences near the head of the Inlet were investigated and some 1900 tonnes of material containing copper-silver-gold were mined from the Three Jays skarn deposit south of Nahmint River. Sporadic exploration work, directed to several copper and/or precious metal prospects, has continued to the present time.

The current Macktush property includes a number of gold-

silver-copper bearing quartz veins. The majority of these have been located by work over the past several years but at least one was explored a number of years ago by several pits and two short adits. Remains of an old cabin (now destroyed) attested to this earlier work and an old claim post with a claim tag characteristic of those in use up to the mid-1940's was observed adjacent to one of the known quartz veins. There are no records of this earlier work;

*references included in the report REMARK
Marble (92F-11500, June 1990) description of the Marble property at
Marble to description of the Marble property.*

The old workings on one of the vein structures were re-discovered by principals of SYMC Resources Ltd. in April of 1981. Mineral claims were located and work through 1986 included prospecting, trenching and sampling. Ten diamond drill holes, totalling more than 900 metres, were completed in 1987 and 1988.

Preliminary metallurgical test work was carried out in 1988 (Broughton, 1988) as were initial investigations pertaining to a possible tailings impoundment area (Palmer and Skirmer, 1988) and potential mining methods. This work was undertaken in response to recommendations of the British Columbia Mine Development Steering Committee which had received a preliminary prospectus from SYMC Resources earlier that year.

A survey of surface workings and drill hole collars on the main quartz vein structure was undertaken in January of 1990 and a compilation of results of exploration work was completed by John Wilson, FGAC, in April. *of that year.*

REGIONAL GEOLOGY AND MINERALIZATION

Vancouver Island makes up the southern part of the Insular belt, the westernmost tectonic subdivision of the Canadian Cordillera. The southern Insular belt is dominated by Paleozoic and Mesozoic volcanic-plutonic complexes and lesser sedimentary rocks which are overlain on the east coast of Vancouver Island by clastic sedimentary rocks of late Cretaceous age. Tertiary basic volcanic rocks are prevalent in the south Island area and granitic intrusions of similar age are widespread along the west coast of the Island.

Vancouver Island hosts a variety of mineral deposit types which include volcanogenic massive sulphides at Buttle Lake and near Duncan which are hosted by late Paleozoic Sicker Group volcanic rocks. The Island Copper deposit near Port Hardy is a porphyry copper-molybdenum deposit with significant by-product gold and which is related to Mesozoic subvolcanic intrusions. Iron-copper skarns, hosted by late Triassic limestones marginal to granitic intrusions, are numerous in the central and northern Island areas.

The west coast and central parts of Vancouver Island are noted for gold-bearing vein deposits. Many of these are at least spatially related to Tertiary granitic intrusions, the most notable examples being the Zeballos camp, and the Kennedy Lake,

Alberni Inlet and Mount Washington areas.

The oldest rocks exposed near Alberni Inlet are late Paleozoic Sicker Group volcanic and sedimentary rocks which underlie the northern part of the Cowichan structural uplift (Figure 4). Three volcanic formations comprise most of the Sicker Group in this area (Massey and Friday, 1989). From oldest to youngest these include a basal pillow basalt with minor felsic units, and intermediate fragmental andesite and an upper volcanoclastic-epiclastic sequence. The youngest sequence of the Sicker Group is comprised of cherty sediments, limestones, siltstones and sandstones.

Mesozoic volcanic and sedimentary rocks overlie Sicker Group rocks and include late Triassic Karmutsen Formation andesite and basalt pillow lavas, pyroclastics and massive flows and early Jurassic Bonanza Group fragmental andesites and lesser sedimentary rocks. Where complete Mesozoic sections exist, the Karmutsen Formation and Bonanza Group are separated by Quatsino Formation calcareous and clastic sedimentary rocks.

The Mesozoic sequences underlie much of the area west of Alberni Inlet (Figure 4) where they are intruded by granodiorites and quartz diorites of the Middle Jurassic Island Intrusions.

Youngest layered rocks include late Cretaceous Nanaimo Group clastic sedimentary rocks which underlie the fault-bounded

Alberni valley (Figure 4). These are intruded by hornblende-feldspar porphyry dykes and sills of probable Tertiary (Eocene?) age (Massey and Friday, 1989).

The dominant northwest structural trend of the Alberni Inlet area is reflected by the Cowichan structural uplift, the elongate nature of Island Intrusion plutons and the distribution of late Cretaceous sediments in the northwest trending Alberni valley. Regional northwest trending thrust faults mark the boundaries between Sicker Group and younger rocks east of Alberni Inlet (Massey and Friday, 1989).

Various styles of mineralization are recognized in the Alberni Inlet area (Muller and Carson, 1969; Massey and Friday, 1989). These include volcanogenic massive sulphide occurrences in the lower volcanic unit of the Sicker Group, porphyry copper and/or molybdenum mineralization associated with Island Intrusions granitic rocks and iron-copper skarn deposits and occurrences in Mesozoic sedimentary and volcanic rocks, some of which have yielded limited production most notably the Three Jays prospect on the west side of Alberni Inlet. According to Wahl (1980), much of the copper mineralization at this prospect may be related to shear zones.

Considerable work has been done in recent years - full
investigating similar styles of mineralization at the head of east-flowing tributaries of Cous Creek (Figure 4). Here,

discontinuous massive sulphide lenses and pods containing copper, silver and gold values are developed in Karmutsen andesite flows near their contact with Island Intrusions granitic rocks and adjacent to felsic dykes of probable Tertiary age (Sookochoff,1986; Laanela,1987).

Other known deposit types west of Alberni Inlet include a number of copper occurrences in fracture zones in Karmutsen Formation volcanic rocks, examples of which include one prospect near Alberni Inlet 5 km north of the Macktush property and several occurrences immediately south of Macktush Creek. The latter prospect features pyrrhotite, pyrite and chalcopyrite in shear zones and in lenses in Karmutsen volcanics from which some silver values have also been reported (Stewart,1983).

The most common mineral deposit types in the Alberni Inlet area are gold-bearing quartz-sulphide veins and fissure zones. These are widespread in the Franklin River-China Creek area east of Alberni Inlet where they are spatially and possibly genetically related to a north trending belt of Tertiary feldspar porphyry intrusions (Carson,1969).

Gold-bearing quartz-sulphide veins also occur in shear zones in Karmutsen Formation basalts west of Alberni Inlet. Examples include the Ferguson prospect south of Two Rivers Arm on Sproat Lake and the Raven and Dauntless prospects due west of

Port Alberni and 7-10 km north of the Macktush property. Gold values at these prospects is associated with quartz veins containing chalcopyrite, pyrite and pyrrhotite (LeRiche and Hopkins, 1988).

PROPERTY GEOLOGY AND MINERALIZATION

The Macktush property is underlain by late Triassic Karmutsen Formation basaltic pillow lavas and andesites which are in contact with granodiorites and quartz diorites of the Middle Jurassic Island Intrusions in the central property area.

As indicated on Figure 4 these granitic rocks, which underlie much of the eastern half of the property, are part of an elongate pluton which extends southeasterly from Sproat Lake through the property area and across Alberni Inlet.

According to recent mapping by Sutherland Brown and others (1986), the contact between the Karmutsen volcanics and Island Intrusions extends in a southeasterly direction through the claims just below the height of land (Figure 5). Tholeiitic pillow lavas are the dominant rock type west of the contact while andesitic varieties underlie the southwestern claims area along Macktush Creek.

Granitic rocks of the Island Intrusions, where observed by the writer in the central property area, include medium to coarse grained grey quartz diorite and granodiorite. Some K-

feldspar stringers were noted locally as were northwest trending 15 cm wide aplite dykes.


The contact between the granitic and volcanic rocks in the central property area is irregular with numerous inclusions of Karmutsen pyroxene porphyry flows and bleached andesites.

Known mineralization on the property includes a small iron-copper skarn zone in Karmutsen volcanics in the central property area and prophyry style mineralization in at least two areas of the property. These include molybdenite in quartz veinlets and fractures in Island Intrusion granodiorite exposed in road cuts along Alberni Inlet in the eastern claims and disseminated chalcopryrite in K-feldspar altered diorites in the northern part of the property (Figure 5).

A number of gold-bearing quartz-sulphide veins in various parts of the claims area constitute the most significant mineralization found to date. A number of these veins occur within a 0.5 square km area in the western part of the COPPER 102 mineral claim (Figure 5) marginal to the contact between Karmutsen volcanics and Island Intrusion granitic rocks.

As indicated on Figure 6, most of the known veins strike northeasterly and dip moderately to steeply southeast. The strike direction is normal to the overall trend of the Island Intrusions contact, which parallels the regional trend, and the distribution of veins in this area is about equally divided

between volcanic and granitic host rocks.

Vein widths range from 0.30 to several metres with an overall average of about 1.3 metre. Vein contacts are commonly sheared with 7-30 cm wide gouge zones developed in both foot- and hangingwall host rocks. Quartz stringers in wallrocks were observed marginal to several of the vein exposures. This feature is particularly evident at the northeast end of the 130 metre long trench (Figure 6) where 0.30 metre wide quartz veins within a 3-7 metre wide zone of shearing are separated by wedges of altered volcanic and granitic rocks. Narrow basic dykes,  parallel the northeast shear direction and cut both the veins and wallrocks. Elsewhere, inclusions of volcanic rocks are present near quartz veins hosted by granitic rocks and the southwest trench on the main quartz vein structure exposes a 1.4 metre wide quartz vein with a quartz diorite footwall and an andesitic hangingwall.

Most vein structures display multiple stages of quartz veining. Colloform banding is common as are drusy cavities. Sulphide mineralization within the veins includes fine to medium grained pyrite, pyrrhotite and chalcopyrite.

A number of the known quartz vein exposures occur along apparently persistent northeast structures. These include the Fred vein (Figure 6) which has an apparent strike length of at least 130 metres; the quartz veining in the long trench to

the southwest may represent an extension of this structure. ^{The} The Red vein (Figure 6) ^{apparently} reportedly extends several hundred metres down a northeast trending draw. ^{inasmuch as the structure was exposed without excavator blasting.} Other exposures of quartz veins ^{near the SW limits of the Red vein represent} in this general area also may be parts of more continuous, parallel zones.

Surface Sampling

A number of surface samples have been collected from various exposures by principals of SYMC Resources Ltd., Provincial Government geologists and the writer. Locations are shown on Figures 6 and 7 and analytical data are contained in Appendix I. Results for sites indicated on Figure 6 are as follows:

Site	Number	Width(m)	Gold(oz/ton)	Silver(oz/ton)	Copper(%)
1	130	Grab	0.318	0.31	0.42
	20773	1.1	0.073	0.07 0.20(ppm)	88(ppm)
2	20774	1.0	696(ppb)	0.30(ppm)	37(ppm)
3	E19511	Grab	0.192	1.56	0.57
4	E19510	Grab	0.166	1.23	0.42
5	E19509	Grab	0.074	0.76	1.12
	20775	Chips	817(ppb)	1.40(ppm)	26(ppm)

The Fred vein (Figure 6), ^{The} apparently the original zone discovered years ago, is exposed in two short adits (now caved) and three pits as shown on Figure 7. Width of the vein, which strikes east-northeast and dips steeply south, ranges from 0.75 to nearly 5 metres. Sample results for those sites indicated on Figure 7 are as follows:

<u>Location</u>	<u>Number</u>	<u>Width(m)</u>	<u>Gold(oz/ton)</u>	<u>Silver(oz/ton)</u>	<u>Copper(%)</u>
1 (Vein)	101	0.91	0.303	0.12	0.01
(Wall)	102	0.46	0.173	0.71	0.05
2 (Vein)	50	2.13	0.303	0.01	0.01
3 (Vein)	104	3.66	0.416	2.21	0.78
4 (Vein)	1003	0.76	0.218	1.43	1.34
5 (Vein)	1	4.88	0.952	0.34	0.60
(Vein)	20772	1.20	0.659	8.1(ppm)	1286(ppm)

Most of the foregoing sample locations, widths (where applicable) and results are as provided by SYMC Resources Ltd. and refer to samples collected on the company's behalf between 1983 and 1987. Note that all of the SYMC samples shown on Figure 6 are grab^s or more properly, character samples of vein material. Sample numbers ~~20772-20775~~ ^{was} refer to samples collected by the writer in June. ^{of 1990.} Results of sampling by B.C. Ministry of Energy Mines and Petroleum Resources geologists at the lower ^{← Spall} adit include values of 4910 ppb gold, 3 ppm silver and 0.16% copper from a 1 metre chip sample and 7100 ppb gold, 34 ppm silver and 0.62% copper from a composite grab sample (H.P. Wilton, personal communication).

Insert. → Diamond Drilling

As noted previously, 10 BQ-size diamond drill holes were completed on the Macktush property in 1987 and 1988. → Unfortunately, core recovered from six of these holes was disturbed before any logging or sampling was done. These included two shallow inclined holes on the RED vein, two inclined holes near the southwest end of the large trench and

two drilled to test parts of the Fred vein (H. McMaster-SYMC Resources Ltd.-personal communication). *Drilled to test*

Diamond drill cores for four inclined holes, totalling 321 metres, *and drilled to test the Fred vein.* are in good order. These were drilled at -45° along 330° azimuths and *reasonably* tested the Fred vein along its exposed strike length to vertical depths of between 20 and 40 metres. Drill hole locations are shown on Figure 7 and sections, after those originally prepared by John Wilson, FGAC, are illustrated on Figure 8. Surveyed locations of the holes are as follows:

<u>Hole Number</u>	<u>North</u>	<u>East</u>	<u>Elevation(m)</u>
DDH87-1	2679.5	1165.5	683.0
DDH87-3	2787.4	1253.4	597.8
DDH88-5	2770.8	1238.5	607.8
DDH87-8	2725.0	1188.5	644.0

Results of core sampling for the three 1987 holes were provided by SYMC Resources Ltd. The writer logged and sampled DDH88-05 and the drill log and analytical data for the *this hole* ~~writer's samples and those provided by SYMC~~ *space* *and analytical data provided by SYMC* are contained in Appendix II.

INTERACT. → *Find.* The quartz vein structure was intersected in the 4 holes drilled and results confirmed a southerly dip of between 60 and 80 degrees. *Vein lengths* ~~True widths~~ ranged from *1.14* metres in the most westerly hole (DDH87-1) to *3.81* metres in DDH87-3 near the known eastern limits of the structure. *by the writer*

Geological relationships noted in DDH88-5 are believed to be to be representative of the Fred vein in the area drilled and

they generally confirm relationships noted in surface exposures. The hole was collared in generally fresh, medium grained, grey quartz diorite locally cut by 0.5-5 metre wide, post-mineral basic dykes with chilled margins. Some 15 metres above the quartz vein intersection, the quartz diorite features an increasing number of quartz-carbonate-pyrite stringers plus increased silicification and argillic-carbonate alteration. Disseminated pyrite and pyrrhotite is also a feature of more intensely altered zones and inclusions of Karmutsen volcanic rocks are evident. A 2 metre length of quartz vein, intersected between 47.5 and 49.5 metres, exhibits multiple stages of veining, drusy cavities and disseminated pyrite, pyrrhotite and chalcopyrite. An 8 metre section of variably altered quartz diorite, with 0.5 metre Karmutsen volcanic inclusions and a basic dyke, follows the quartz vein intersection with the hole terminating at 60 metres in relatively unaltered quartz diorite. Sampling of drill cores yielded the following results:

<u>Hole No.</u>	<u>Interval(m)</u>	<u>Length(m)</u>	<u>Au(oz/ton)</u>	<u>Ag(oz/ton)</u>	<u>Cu(%)</u>
	<i>109.58-110.72</i>	<i>1.14</i>	<i>0.174</i>	<i>0.06</i>	<i>0.03</i>
DDH87-1	109.73-112.70	2.97	0.172	0.07	0.73
DDH87-3	33.58-35.36 <i>34.29</i>	<i>1.83</i> <i>0.79</i>	0.114 <i>0.112</i>	0.46 <i>0.48</i>	0.80
<i>36.58-40.39</i>	35.36-40.64	5.28 <i>3.81</i>	<i>1.290</i>	5.06 <i>5.04</i>	0.94 <i>0.95</i>
DDH87-8	71.32-72.50	1.18	0.116	0.06	0.01
<i>71.63-72.88</i>	72.50-74.29	1.79 <i>1.25</i>	0.290	0.05	0.08 <i>0.03</i>
DDH88-5	47.22-48.80	1.58	0.006	0.09	0.02
			(219ppb)	(3.0ppm)	(190ppm)

Bulk Sampling

Four 6-8 kg samples were collected from the Fred vein in 1988 and submitted to Coastech Research Inc. for preliminary metallurgical testing. Average head grades of a composite sample were 0.126 oz/ton gold and 0.29 oz/ton silver. Test work on the composite sample included standard flotation, gravity concentration and cyanidation procedures.

Results of the test work indicated that good recoveries for gold, silver, and copper could be obtained by initial gravity concentration to recover free milling coarse gold followed by froth flotation to produce a sulphide concentrate containing copper and precious metals.

CONCLUSIONS

The Macktush property includes a number of gold-bearing quartz-sulphide veins. Work to date in the central property area, which includes ^{mechanical} trenching and diamond drilling, has partially defined several vein structures with apparent good gold grades over reasonable widths. Some of these may extend ^{Recent excavations/trenching of the} over significant strike lengths ^{and to depth} and further work is warranted to test this potential. ^{These veins extend for}

sub-indicates that ~~strike~~ structures containing ~~these veins~~ extend for
several hundred
along strike

Limited sampling of several of the veins indicates a wide variation in gold content. While this is a characteristic feature of deposits of this type, it does emphasize the need

for detailed sampling to determine average grades.

As noted previously, most of the known quartz veins strike northeasterly, normal to the regional structural trend as reflected by the northwest trending contact between the Island Intrusions and Karmutsen Formation volcanic rocks. The quartz veins in the central property area are marginal to this contact which is considered to be prospective for the discovery of additional gold-bearing veins throughout the claims area.

Other styles of mineralization known on the Macktush property include iron-copper skarns and porphyry copper and molybdenum. Further investigation is necessary to determine the significance of these.

The Macktush property merits additional work as detailed in the succeeding section.

RECOMMENDATIONS

A two-phase work program is recommended for the Macktush property with the principal emphasis of the Phase I program being directed to additional diamond drilling of the Fred vein structure. This work should include -60° holes drilled from the four original drill sites, followed by infill drilling at 20 metre spacings between drill sites with two holes at -45° and -60° drilled from each site. Step-out holes, northeast and southwest of the strike length defined to date, are also

recommended as are ^{two} ~~four or five~~ deeper holes to test the vein at vertical depths in the range of 75 metres. This program of ^{about} ~~more~~ than ¹⁵ ~~20~~ holes totalling ¹⁷⁰⁰ ~~2000~~ metres is designed to thoroughly test the continuity of grade and structure within and adjacent to the known limits of the Fred vein. ^{These holes, not along, but along 200 m. interval, to test the Red vein - suggested reference to the vein - recently flushed areas.}

As previously noted, a number of additional gold-bearing quartz veins are known in the vicinity of the Fred vein. In order to determine precise locations of these and other structures, a topographic map on a scale of 1:5000 should be prepared utilising available colour air photography and the existing survey control in the area of the Fred vein. ~~X~~ It is intended that such a map would cover the entire property area with more detailed (1:1000) coverage prepared for the area of the Fred ^{and Red} vein.^s These topographic maps would provide a base for geological mapping and sampling of vein structures.

It is also recommended that a picket line grid be established with a baseline parallel to the trend of the Fred vein and cross lines at 100 metre spacings with 25 metre stations. It is intended that this grid, totalling 20 km, would cover the area of the Island Intrusions - Karmutsen Formation contact over much of the COPPER 102 claim. The grid would be used for tying in drill holes prior to a proper survey and for conducting orientation VLF-EM and magnetometer geophysical surveys.

The other known vein structures, ~~including the Red vein,~~

should be further investigated by excavator trenching followed by detailed mapping and sampling.

Phase II work would consist principally of additional diamond drilling where warranted, based on results of ~~Fred vein~~ ^{Phase I & II} drilling and on results of detailed sampling of other vein structures. Additional trenching may also be required as part of the Phase II program.

Phase III work is envisioned as including preliminary feasibility work which would be contingent on the results obtained from the first two phases. This work might consist of definition drilling and metallurgical test work of bulk samples.

COST ESTIMATE

Phase I

Topographic mapping	350	\$5,000.00	5,500
Picket line grid - 20 km @ \$300/km		\$6,000.00	7,000
Geological mapping, sampling		\$10,000.00	10,500
Geophysics - 20 km @ \$250/km	300	\$5,000.00	6,000
Excavator trenching - 50 hours @ \$100/hour	115	\$5,000.00	5,750
Diamond drilling - 2000 metres @ \$100/metre		\$200,000.00	230,000
Analytical Work	115	\$10,000.00	11,000
Engineering, supervision, reporting		\$15,000.00	17,000
Contingencies		\$38,400.00	43,000

Total Phase I

\$294,400.00 335,750

Phase II

Diamond drilling - 4000 metres @ \$100/metre	115	\$400,000.00	460,000
Excavator trenching - 50 hours @ \$100/hour		\$5,000.00	5,750
Analytical Work	115	\$20,000.00	23,000
Engineering, supervision, reporting		\$50,000.00	55,000
Contingencies		\$71,250.00	80,000

Total Phase II

\$546,250.00 623,750

Total Phases I and II

~~\$840,650.00~~ 959,500

N.C. Carter, Ph.D. P.Eng.

REFERENCES

- Broughton, Linda M. (1988): SYMC Resources Ltd. - Metallurgical Testwork Report #2, Coastech Research Inc.
- Carson, David J.T. (1969): Tertiary Mineral Deposits of Vancouver Island, CIM Transactions Vol. LXXII, pp. 116-125
- Laanela, H. (1987): Report on Geological, Geochemical and Magnetic Surveys on the Skarn Claim, Alberni Mining Division, BCMEMPR Assessment Report 16918
- Lerliche, Peter and Hopkins, J. (1988): Report on Geological and Geochemical Surveys of the Stamp Claim Group, Alberni Mining Division, BCMEMPR Assessment Report 17557
- Massey, N.W.D. and Friday, S.J. (1989): Geology of the Alberni-Nanaimo Lakes Area, Vancouver Island in Geological Fieldwork 1988, BCMEMPR Paper 1989-1, pp. 61-74
- Muller, J.E. and Carson, D.J.T. (1969): Geology and Mineral Deposits of Alberni Map-Area, British Columbia (92F), GSC Paper 68-50
- Palmer, Ronald W. and Skermer, Nigel A. (1988): Macktush Creek Property - Proposed Pilot Tailings Impoundment-private report for SYMC Resources Ltd.
- Sookochoff, L. (1986): Diamond Drilling Report-Cous Creek Kola Property, Alberni Mining Division, BCMEMPR Assessment Report 15658
- Stewart, Craig (1983): Contented Claim Report #1, Report on Geology and Geochemistry, Alberni Mining Division, BCMEMPR Assessment Report 12044

COST ESTIMATEPhase I

Topographic mapping	\$5,500.00
Picket line grid - 20 km @ \$350/km	\$7,000.00
Geological mapping, sampling	\$10,500.00
Geophysics - 20 km @ \$300/km	\$6,000.00
Excavator trenching - 50 hours @ \$115/hour	\$5,750.00
Diamond drilling - 2000 metres @ \$115/metre	\$230,000.00
Analytical Work	\$11,000.00
Engineering, supervision, reporting	\$17,000.00
Contingencies	<u>\$43,000.00</u>

Total Phase I \$335,750.00

Phase II

Diamond drilling - 4000 metres @ \$115/metre	\$460,000.00
Excavator trenching - 50 hours @ \$115/hour	\$5,750.00
Analytical Work	\$23,000.00
Engineering, supervision, reporting	\$55,000.00
Contingencies	<u>\$80,000.00</u>

Total Phase II \$623,750.00

Total Phases I and II \$959,500.00

N.C. Carter, Ph.D. P.Eng.

Sutherland Brown, A., Yorath, C.J., Anderson, R.G. and Dom, K. (1986):
 Geological Maps of Southern Vancouver Island
 Lithoprobe I, Geological Survey of Canada, Open
 File 1272, Sheet 7 of 10 Sheets

SYMC Resources Ltd. (1988): A Prospectus for SYMC Resources Ltd.-
 Macktush Creek Property-Port Alberni, B.C.-
 prepared for B.C. Mine Development Steering
 Committee

Wahl, H.G. (1980): Results of Prospecting and Geochemical Sampling
 on the IME Group, Alberni Mining Division,
 BCMEMPR Assessment Report 8286

*Carter, N.C. (1990): Geol Report on the Macktush
 Property, - private report for
 SYMC Resources Ltd.*

*Wilson, John (1991): Record of Chip Sampling
 of April, 1991 on the
 Macktush Property
 A/B M/D Port Alberni
 - private report for SYMC Resources Ltd.*

CERTIFICATE

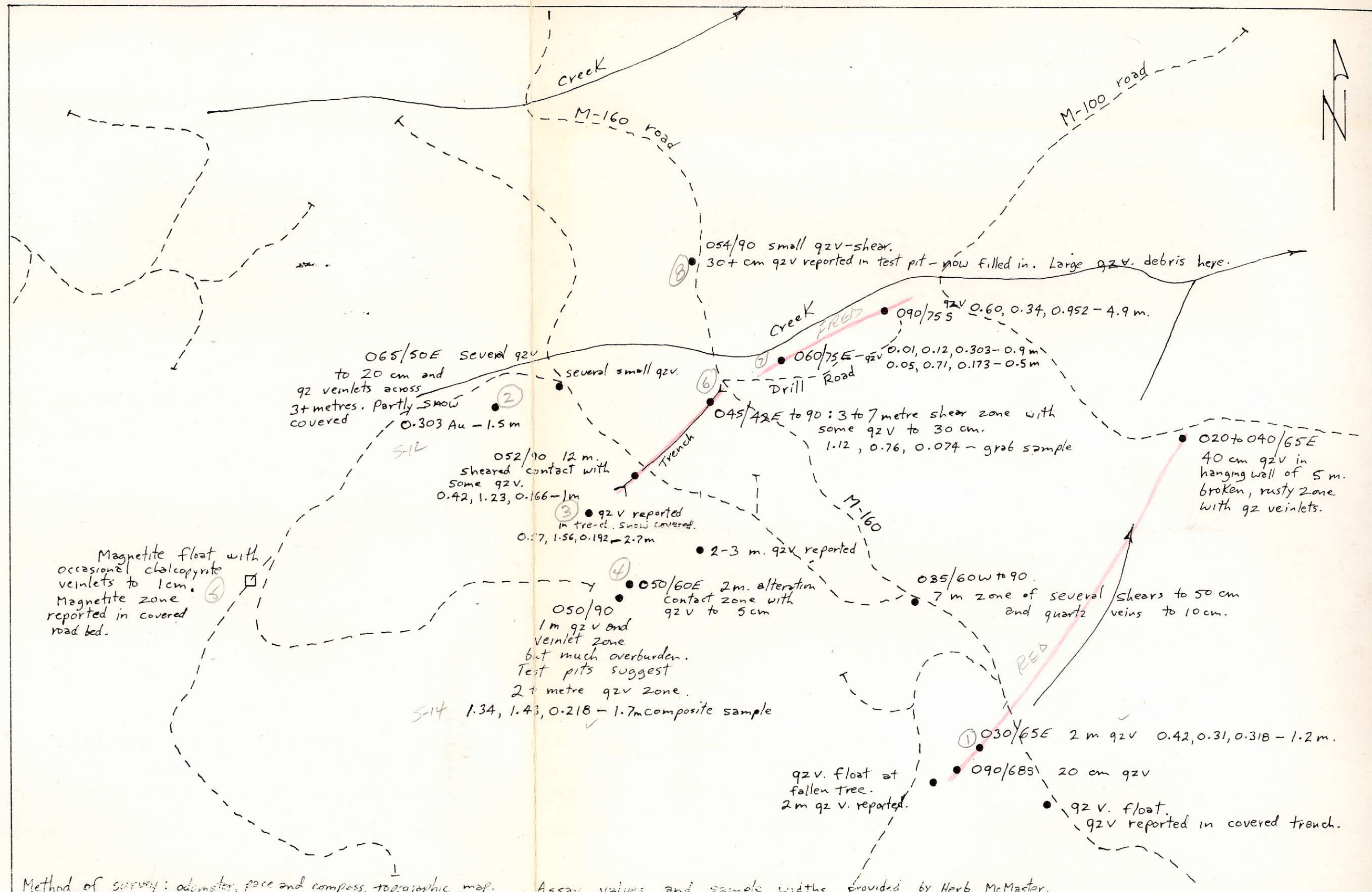
I, NICHOLAS C. CARTER of Victoria, British Columbia, do hereby certify that:

1. I am a Consulting Geologist registered with the Association of Professional Engineers of British Columbia since 1966.
2. I am a graduate of the University of New Brunswick with B.Sc.(1960), Michigan Technological University with M.S.(1962) and the University of British Columbia with Ph.D.(1974).
3. I have practised my profession in eastern and western Canada and in parts of the United States for more than 25 years.
4. The foregoing report on the Macktush Property, Alberni Mining Division, British Columbia, is based on personal examinations of parts of the property, ^{1980 & 1981} a review of published and unpublished reports and maps ^{on} and on information provided by SYMC Resources Ltd. which included a compilation of previous work prepared by John Wilson, FGAC.
5. I hold no interest, directly or indirectly, in the mineral claims comprising the Macktush property or in the securities of SYMC Resources Ltd. nor do I expect to receive any such interest.

N.C. Carter, Ph.D. P.Eng.

Victoria, B.C.
July 16, 1990

N.C. CARTER, Ph.D., P.Eng.
CONSULTING GEOLOGIST



SYMBOLS		0 100 200 300 m.	
•	showing site (quartz veins)		
052/90	strike, dip		
qzv	quartz vein		
0.42, 1.23, 0.166 - 2.7 m	assays % Cu, g/ton Ag, g/ton Au - metres sampled		

SCALE : ~~1:5000~~

NTS :

Work Done: April 1990

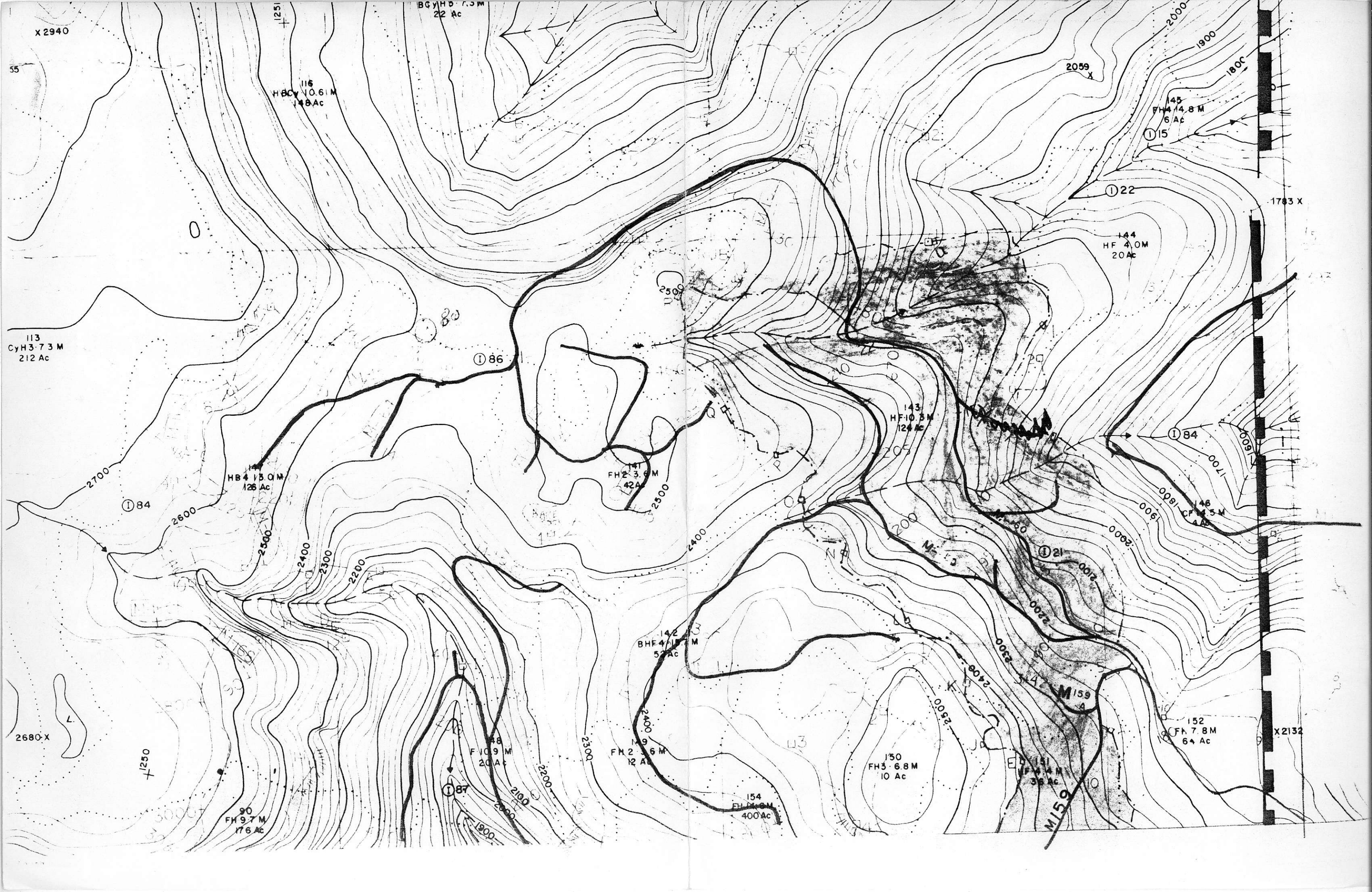
By: John Wilson/Herb McMaster

SYMC RESOURCES LIMITED

MACKTUSH PROPERTY

COPPER 102 CLAIM REGION

LOCATIONS OF SHOWINGS



X2940

116
HBCy 10.6 M
148 Ac

BCyHD 7.5 M
22 Ac

2059 X

145
FH 14.8 M
6 Ac

122

1783 X

144
HF 4.0 M
20 Ac

113
CyH 3.73 M
212 Ac

186

143
HF 10.5 M
124 Ac

184

144
HB 4.15 M
126 Ac

141
FH 2.36 M
42 Ac

184

142
BHF 4.1 M
52 Ac

M159

152
FH 7.8 M
64 Ac

X2132

90
FH 9.7 M
176 Ac

187

149
FH 2.56 M
12 Ac

150
FH 3.68 M
10 Ac

151
FH 3.4 M
36 Ac

154
FH 1.9 M
400 Ac