

830424

SUMMARY REPORT

McKEE CREEK MINERAL CLAIMS

ATLIN MINING DIVISION  
BRITISH COLUMBIA

N.C. CARTER, Ph.D., P.Eng.

March 23, 1983

## INTRODUCTION

Four mineral claims on McKee Creek in the Atlin Mining Division are owned by John R. Harvey and Harvey Evenden.

This summary report, prepared at the request of Mr. John Harvey, is based on an examination of the property in September of 1982 and on a review of private reports made available by Mr. Harvey.

## LOCATION AND ACCESS

The mineral claims are situated 16 km. southeast of Atlin on McKee Creek. Access to the central part of the claims is by road.

## MINERAL PROPERTY

John R. Harvey (60%) and Harvey Evenden (40%) own the following Modified Grid mineral claims in the Atlin Mining Division:

<u>Mineral Claim</u>	<u>Record No.</u>	<u>Expiry Date</u>
PENNY (12 units)	1165	October, 1984
KIA ( 6 units)	1405	August, 1984
HARV (18 units)	1385	July, 1984
COX ( 8 units)	1404	August, 1984

The owners also hold and operate placer leases on McKee and Eldorado Creeks.

## HISTORY

Placer mining on McKee Creek has been carried out since 1898, with production of more than 44,000 ounces of coarse gold.

The lode gold potential of McKee Creek and environs was first investigated in the early 1940's by Cominco. Gold-bearing quartz veins were discovered by the then placer operators while driving an adit to exploit the gravels. Only limited sampling was done. A percussion drilling program by DuPont in 1977 included collection of bedrock samples but these were not analyzed.

The present claims were located in 1981. Since then, representatives of several companies have sampled bedrock exposed by placer mining in McKee Creek.

A percussion drill hole ( $-50^{\circ}$  at  $315^{\circ}$  azimuth) was drilled to a depth of 120 feet beneath the principal exposed zone in September of 1982. The writer located this hole and supervised sampling of cuttings at 10 foot intervals.

## GEOLOGY AND MINERALIZATION

McKee Creek area is underlain by an assemblage of greenstones and argillaceous sedimentary rocks, part of the Cache Creek Group of Permo-Carboniferous age. Layered rocks are intruded by small ultramafic plugs, and a diorite dyke.

Where exposed, all rocks are intensely sheared and brecciated, with the principal orientation at  $N20^{\circ}E$ .

The main exposed area, in the southwest corner of the Penny claim features sheared greenstones, argillites and cherts with ubiquitous quartz veinlets. Carbonate alteration, including ankerite and fuchsite-mariposite is pervasive.

Chip samples collected by various geologists returned generally low gold and silver values, ranging from detection limits to about 30 - 40 ppb gold and 0.5 ppm silver. Sampling by Aspinall (1981) returned higher values in the main exposed area with values ranging from 950 to 1600 ppb gold and arsenic ranging from 68 to 119 ppm.

Samples collected from the percussion drill hole yielded values ranging from 11 ppb to 165 ppb gold. The final sample, 800 ppb, may have been contaminated.

Cominco investigated fault zones containing pyrite and quartz exposed in a placer drift in the 1940's, believed to have been situated several hundred feet north of the main exposure. Sampling returned values as high as 0.36 ounces per ton over 3.3 feet adjacent to a 2.2 foot wide sample grading 0.18 ounces per ton. Although recommended, no further work was done and the exact location of this drift is unknown.

#### CONCLUSIONS AND RECOMMENDATIONS

The coarse nature of placer gold recovered from McKee Creek and the association of hackly gold with quartz and rock chips in some of the nuggets suggests that such mineralization has not moved far from its original source.

Old Cominco records indicate good gold values are present

in bedrock. While recent surface sampling has yielded low values, the geological environment is favourable for lode gold mineralization.

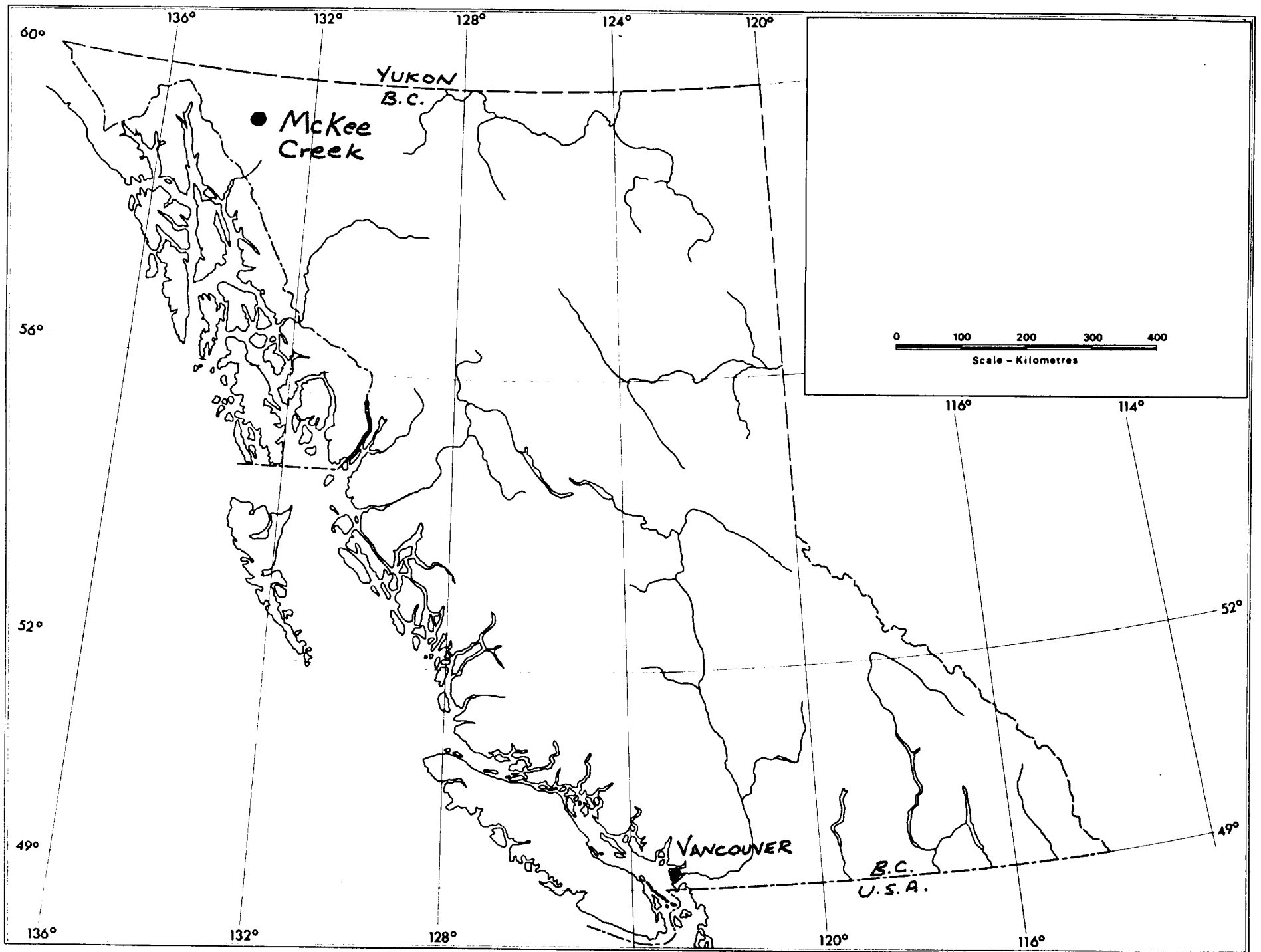
Most bedrock in McKee Creek is obscured by glacial overburden and tailings. No systematic investigation of the lode potential has been undertaken.

Detailed geological mapping of the entire claims area, coupled with rock and soil geochemistry, is recommended.

March 23, 1983

---

N.C. Carter Ph.D., P.Eng.



664

662

45'

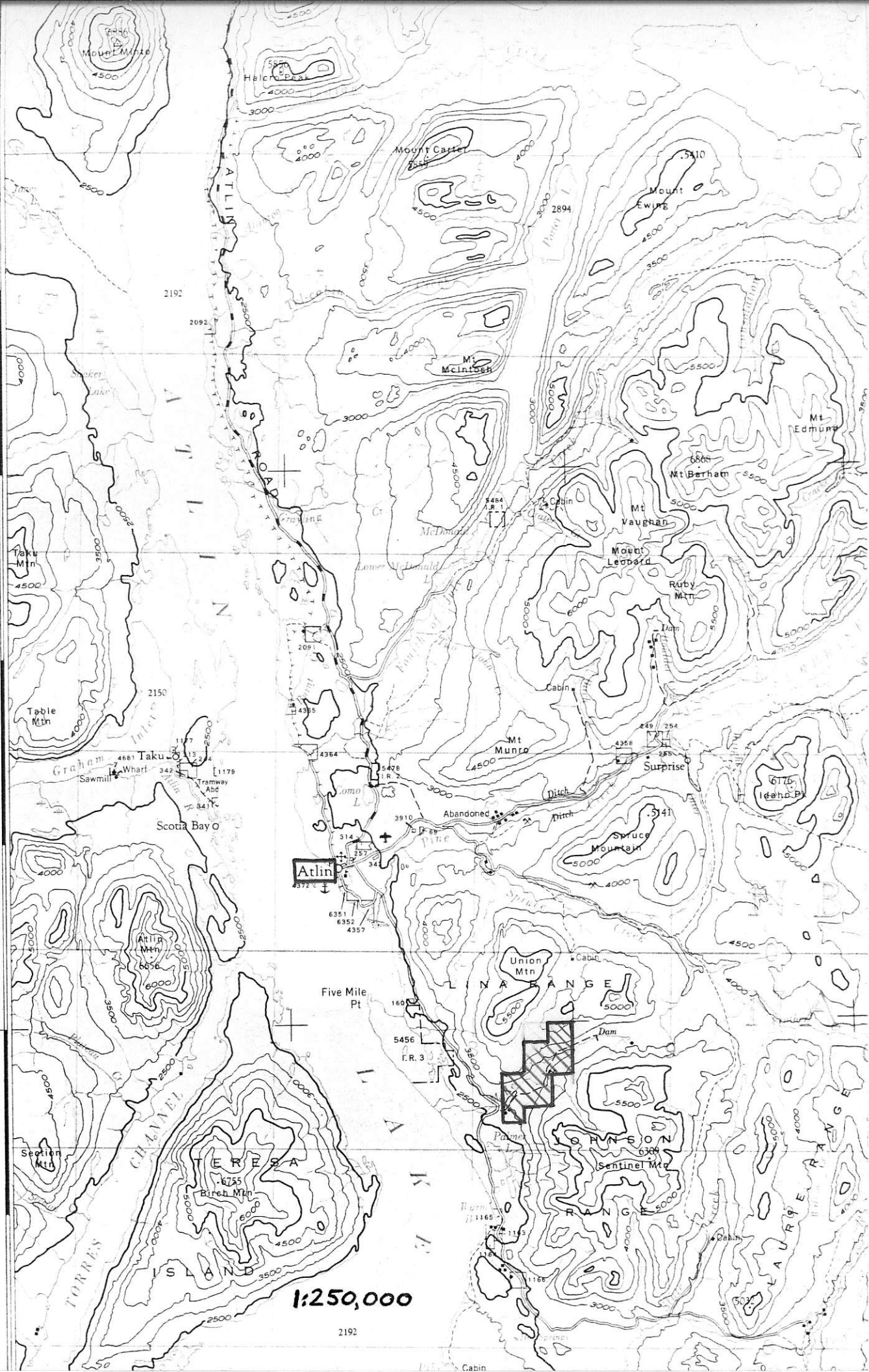
662

661

660

30'

659



1:250,000

2192







ASPIHALL SAMPLES - 1981

File No. 81-1544

c.c. Ontrak Exploration Ltd. Yukon

Type of Samples Rock

## GEOCHEMICAL ASSAY CERTIFICATE

Disposition \_\_\_\_\_

SAMPLE No.	As	Sb	Au							
McKee 1	2	2	.005							1
2	24	2	.005							2
3	2	2	.005							3
4	5	2	.005							4
5	16	2	.005							5
6	15	2	.010							6
7	13	2	.005							7
8	9	2	.005							8
9	7	2	.005							9
10	28	2	.005							10
11	16	2	.005							11
12	119	2	.150	1						12
13	108	2	.160	2						13
14	92	2	.075	3						14
15	12	2	.005							15
16	68	2	.095	4						16
17	18	2	.005							17
18	3	2	.005							18
19	2	2	.005							19
20	2	2	.005							20
21	135	5	.005							21
22	6	2	.005							22
23	9	2	.005							23
24	5	2	.005							24
25	2	2	.005							25
26	46	2	.005							26
27	5	2	.005							27
McKee 28	2	2	.005							28
										29
										30
										31
										32
										33
										34
										35
										36
										37
										38
										39
										40

All reports are the confidential property of clients  
All results are in PPM.

DIGESTION:.....

DETERMINATION:.....

DATE SAMPLES RECEIVED Oct. 5, 1981

DATE REPORTS MAILED Oct. 14, 1981

ASSAYER

DEAN TOYE, B.Sc.  
CHIEF CHEMIST  
CERTIFIED B.C. ASSAYER

<u>No.</u>	<u>Description</u>	<u>Measurement</u>	<u>Width</u>	<u>Oz. Au</u>	<u>Oz. Ag</u>
	Solid vein rock with quartz seams & pyrite	-	1.25	0.14	0.1
	From dump " " " " " "	-	Grab	0.095	0.1
	" " " " " "	-	Grab	0.245	0.2
	Gray rock quartz seams and pyrite	0-2.5' from W.	2.5	0.18	0.2
	" " " " " "	2.5-5.8' " "	3.3	0.36	0.5
	" " some quartz and pyrite	5.8-2.5' " "	2.5	0.02	0.1
	" " with pyrite, some decomposed	17-20' W of Stn 31	3.0	0.02	0.1
	" " with pyrite & quartz seams	12-15' " " " "	3.0	0.04	0.1
	" " decomposed & rusty	20-24' " " " "	4.0	Tr	0.2
	" " with quartz seams and pyrite	15-18' " " " "	3.0	0.03	1.0
	" " " " " " " "	15-21' " " " "	3.0	0.02	0.1
	" " rusty	21-24' " " " "	3.0	Tr	Tr
	Dark grey rock with quartz seams & pyrite	24' SW of Stn 32	2.0	0.05	0.40
	" " " " " " " "	28' SW " " " "	2.0	0.04	0.10
	" " " little quartz & pyrite	30' " " " "	1.0	0.04	0.10
	" " " with fine seams quartz/pyrite	44' N of Stn 31	2.0	Tr	Tr
	" " " few seams quartz & pyrite	44' " " " "	2.0	0.04	0.10
	" " " " " " " "	24' " " " 30	1.0	0.02	0.10
	Blue rock, several slips, some pyrite	At Stn 6 W side	4.0	Tr	Tr
	" " " " " " " "	" " " E "	1.0	Tr	Tr

C.M. & S. RESULTS- 1941