

HOPE SILVER PROPERTY
TERRACE AREA
SKEENA MINING DIVISION, B.C.

Location and Access

62 km north of Terrace by way of the Nass River road which leaves highway 16 in east Terrace. The first 50 km is on pavement.

The principal mineral showings are on a bench at 350 m elevation on the east side of the Kitsumkalum valley. Some 1.3 km of road requires opening up - this would involve less than a day of bulldozer time.

The Alice Arm - Stewart power line follows the Nass River road and is within 2 km of the property.

Previous Work

Mineral showings on the property were originally staked in 1913 and the property has been variously known as the Iona, Silver Dollar, Silver Coin, Silver Plate and Silver Cup. Work in the 1920's included pitting, a 6 m shaft and a 15 m adit. High grade material was reportedly shipped in 1926.

6 tons grading 40.3 oz/ton silver, 2.8% copper and 5.4% lead were shipped in 1966. The property was acquired in 1969 by Kleanza Mines Ltd (later Kendal Mining and Exploration Ltd.) and work over the next four seasons included bulldozer trenching, geophysics and five short drill holes totalling 52.7 metres.

The condition of the access road and old trenches suggests little if any work since the early 1970's.

Mineral Property

The property consists of one Modified Grid mineral claim of 20 units known as the Silver Ghost and two internal 2-post claims, the Weary 1 and 2.

Geological Setting and Mineralization

The property is underlain by Bowser Assemblage siltstones and greywackes which strike northeasterly and dip moderately north. The east contact of the Coast Plutonic Complex is 5 km to the east and a small plug of Coast granitic rocks cuts the sediments 600 metres west of the main mineralized zones.

The sedimentary rocks are transected by two parallel, west-northwest striking, steeply south dipping shear zones. 0.3 to 0.6 metre wide quartz-sulfide veins are developed along the shear zones and the area between them in the area of the principal showings is occupied by quartz-breccia sulfide zones which contain medium to coarse grained sphalerite, galena, chalcopyrite and tetrahedrite.

Exposed width of the quartz breccia sulfide zone in the creek showing is 7.5 metres. Two samples were collected by the writer across the exposed width - analytical results are pending.

A 4.6 metre wide zone of quartz-breccia-sulfides was exposed in the area of the old shaft, 18 metres west of the creek showing, in 1969. This zone is now sloughed, but a sample across the exposed width, collected by the writer in 1969, assayed 12.6 oz/ton silver, 0.76% copper, 1.90% lead and 6.7% zinc.

Quartz veining and some quartz-breccia-sulfide zones are known to occur in sloughed pits and trenches over a 90 metre interval to the southeast of the principal showings; to the northwest along strike good silver values were reported from old pits.

Gold values from the property range from trace to 0.02 oz/ton. This may be merely a reflection of the fact that little assaying for gold has been done. Similar quartz-sulfide veins and quartz-breccia sulfide zones, studied by the writer in the Alice Arm area, are known to have gold values in the 0.03 - 0.56 oz/ton range.

Conclusions and Recommendations

Hope Silver is an attractive prospect which features ease of access and proximity to existing infrastructure. Good grades of silver and base metal mineralization are known to occur over significant widths in the area of the principal showings - areas along strike and to depth are mainly untested.

The property warrants a program of geophysics to better define potential strike extensions, followed by 1000 metres of diamond drilling. Anticipated expenditures would be in the order of \$100,000.



**MINERAL
• ENVIRONMENTS
LABORATORIES**

SPECIALISTS IN MINERAL ENVIRONMENTS
CHEMISTS • ASSAYERS • ANALYSTS • GEOCHEMISTS

VANCOUVER OFFICE:
705 WEST 15TH STREET
NORTH VANCOUVER, B.C. CANADA V7M 1T2
TELEPHONE (604) 980-5814 OR (604) 988-4524
TELEX: VIA U.S.A. 7601067 • FAX (604) 980-9621

TIMMINS OFFICE:
33 EAST IROQUOIS ROAD
P.O. BOX 867
TIMMINS, ONTARIO CANADA P4N 7G7
TELEPHONE: (705) 264-9996

Assay Certificate

9S-0322-RA1

Company: NICK CARTER
Project:
Attn: NICK CARTER

Date: NOV-02-89
Copy 1. NICK CARTER, VICTORIA, B.C.

We hereby certify the following Assay of 2 ROCK samples
submitted OCT-31-89 by NICK CARTER.

Sample Number	AG G/TONNE	AG OZ/TON
20769R	278.0	8.11
20770R	266.0	7.76

Certified by _____

MIN-EN LABORATORIES



Geochemical Analysis Certificate

9S-0300-RG1

Company: NICK CARTER
 Project:
 Attn: NICK CARTER

Date: OCT-24-89

Copy 1. NICK CARTER, VICTORIA, B.C.
 2. NICK CARTER, C/D MIN-EN LABS.

He hereby certify the following Geochemical Analysis of 2 ROCK samples submitted OCT-20-89 by NICK CARTER.

Sample Number	AU-FIRE PPB	AG PPM	CU PPM	PB PPM	ZN PPM
20769	31	189.0	6470	7650	3550
20770	239	234.0	13250	32700	2650

THESE SAMPLES SHOULD HAVE BEEN REQUESTED FOR ASSAY.

Certified by _____

MIN-EN LABORATORIES

approximately 10 miles long runs from Rosswood at the north end of Kitsumgallum lake to Cedar River crossing and a good pack-horse trail along the telegraph line leads from there to the property. There is a cabin beside the trail and the mineral showings are 200 feet above it at an elevation of 1,050 feet on the gentle southeast slope of Belway mountain. The claims were first staked in 1913 and have been known successively as the Iona, Silver Dollar and Silver Coin, and Silver Plate and Silver Cup groups. In 1926 the Hopper Davis Syndicate sank a 20-foot shaft and shipped some high-grade ore. The present owners are Clarence Giggy, Donald Bruce, and partners, of Terrace.

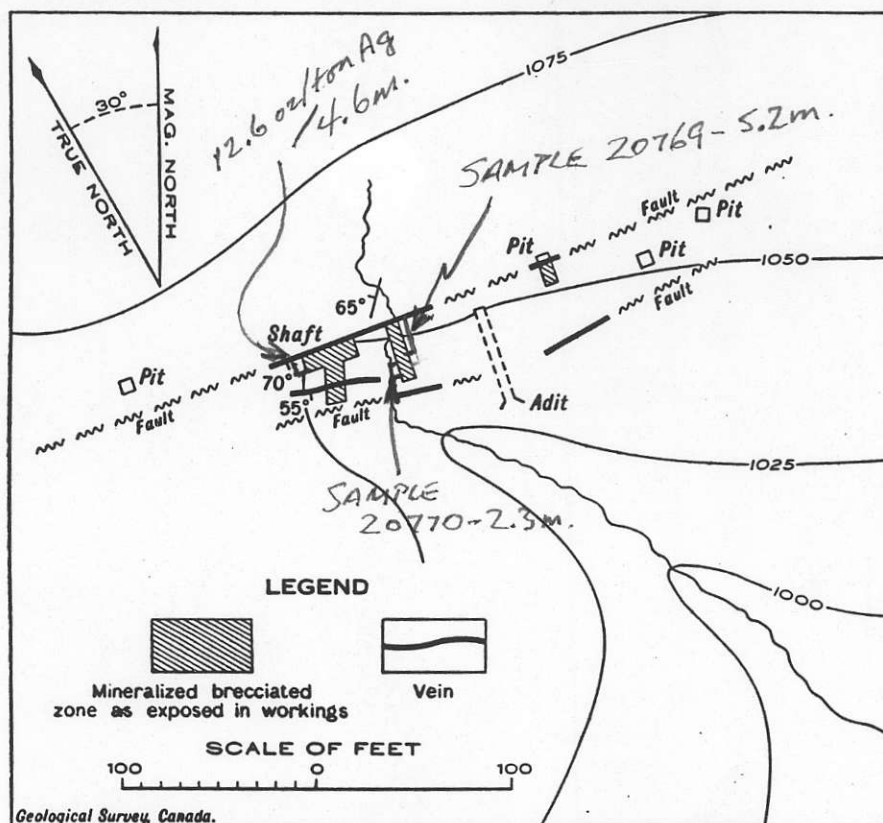


Figure 2. Plan of part of Silver Plate and Silver Cup group.

Silver, lead, zinc, and copper-bearing minerals occur in quartz veins and in brecciated zones in argillite and impure sandstone. The sediments strike about north 20 degrees east and dip from 55 to 65 degrees northwest. The deposit is under a heavy covering of drift and has been exposed by trenches at intervals for 150 feet along its strike. No intrusive rocks were seen in the vicinity.

st
of
th
m
ve
T
ch

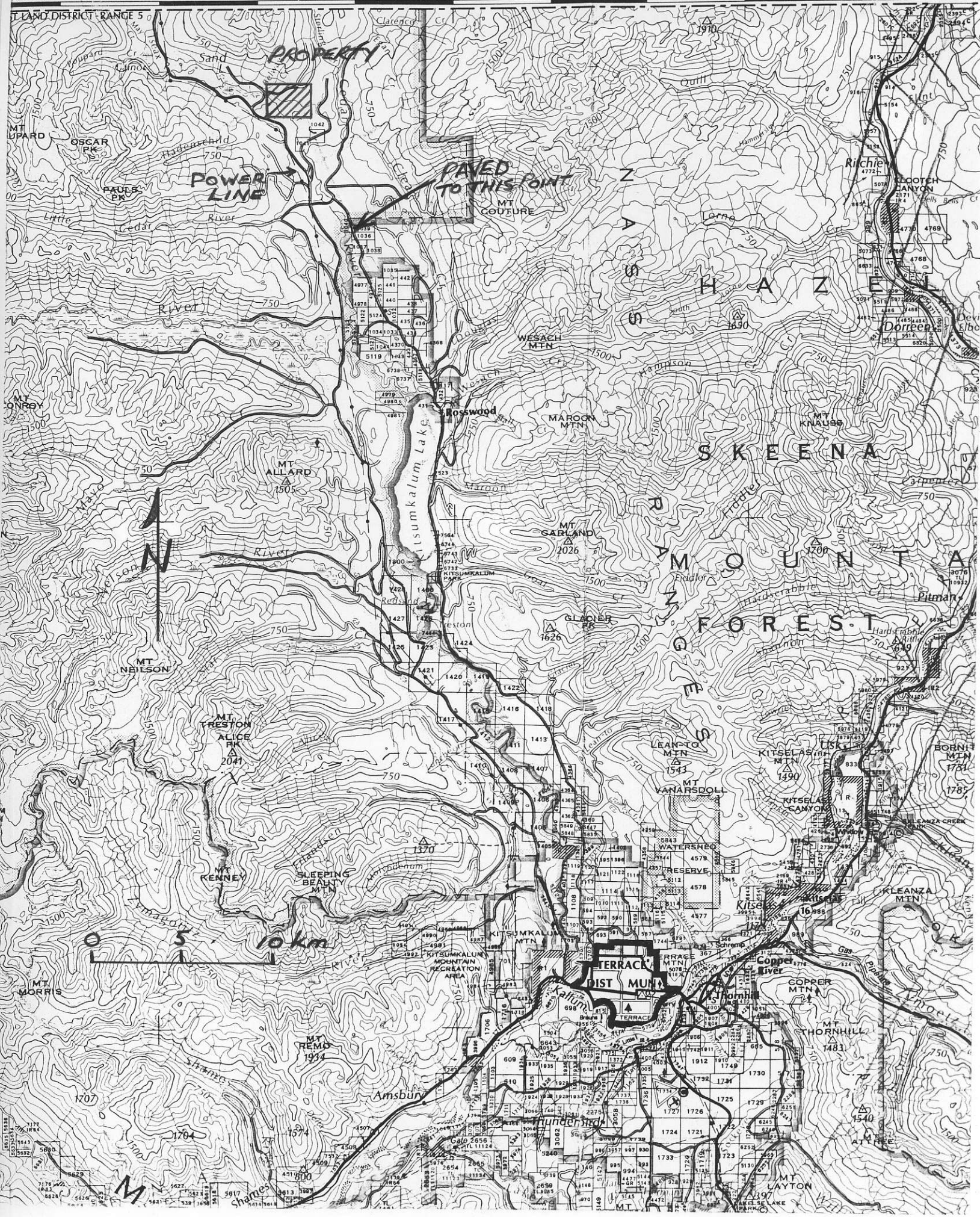
lo
st
M
4
th
sh
ce

50
be
ve
20
a
ad
qu
sul
the
0-
cer
the
no

Ref

Co
eas
sta
cha

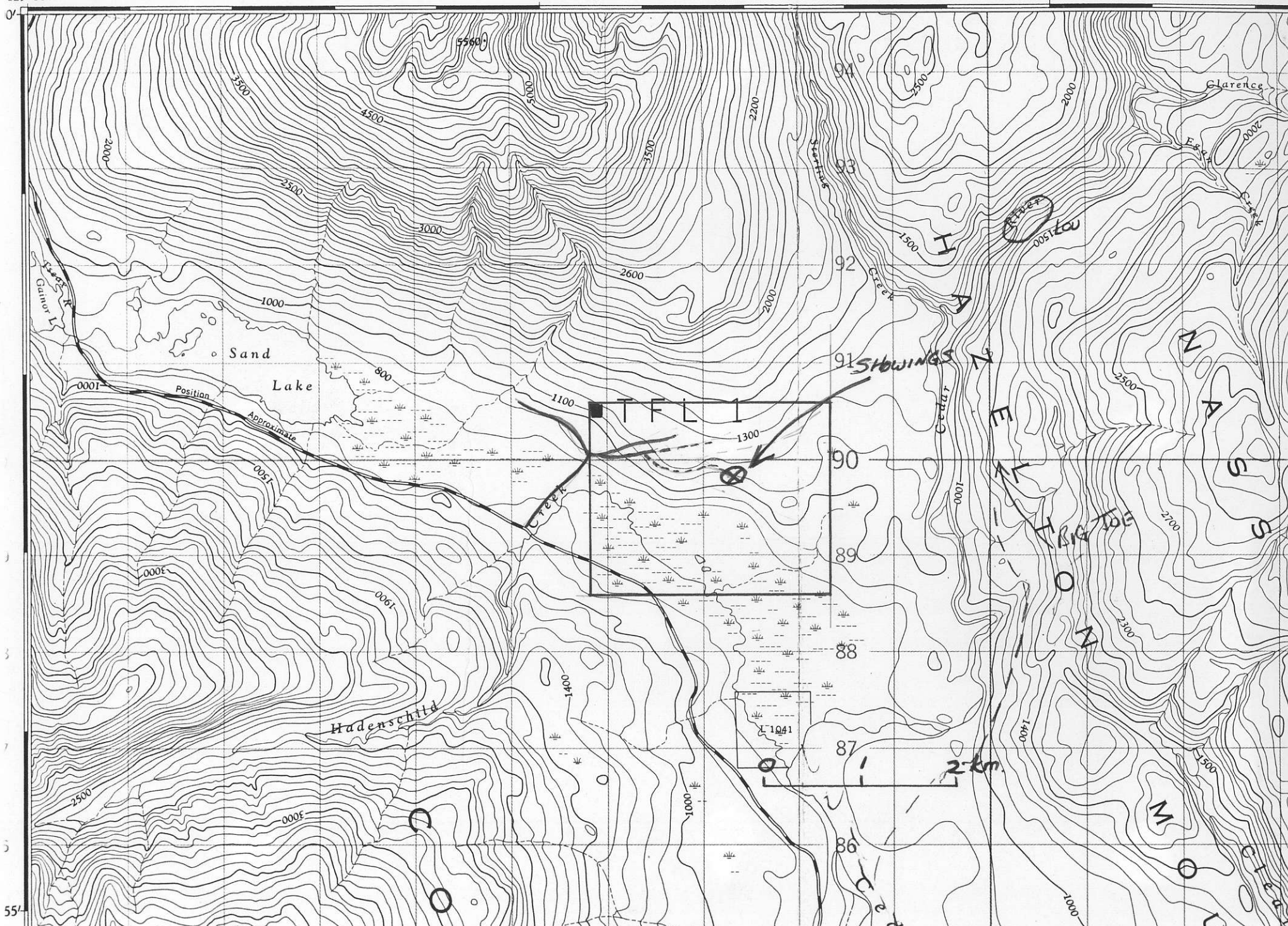
stri
on
The
ble
am
ver

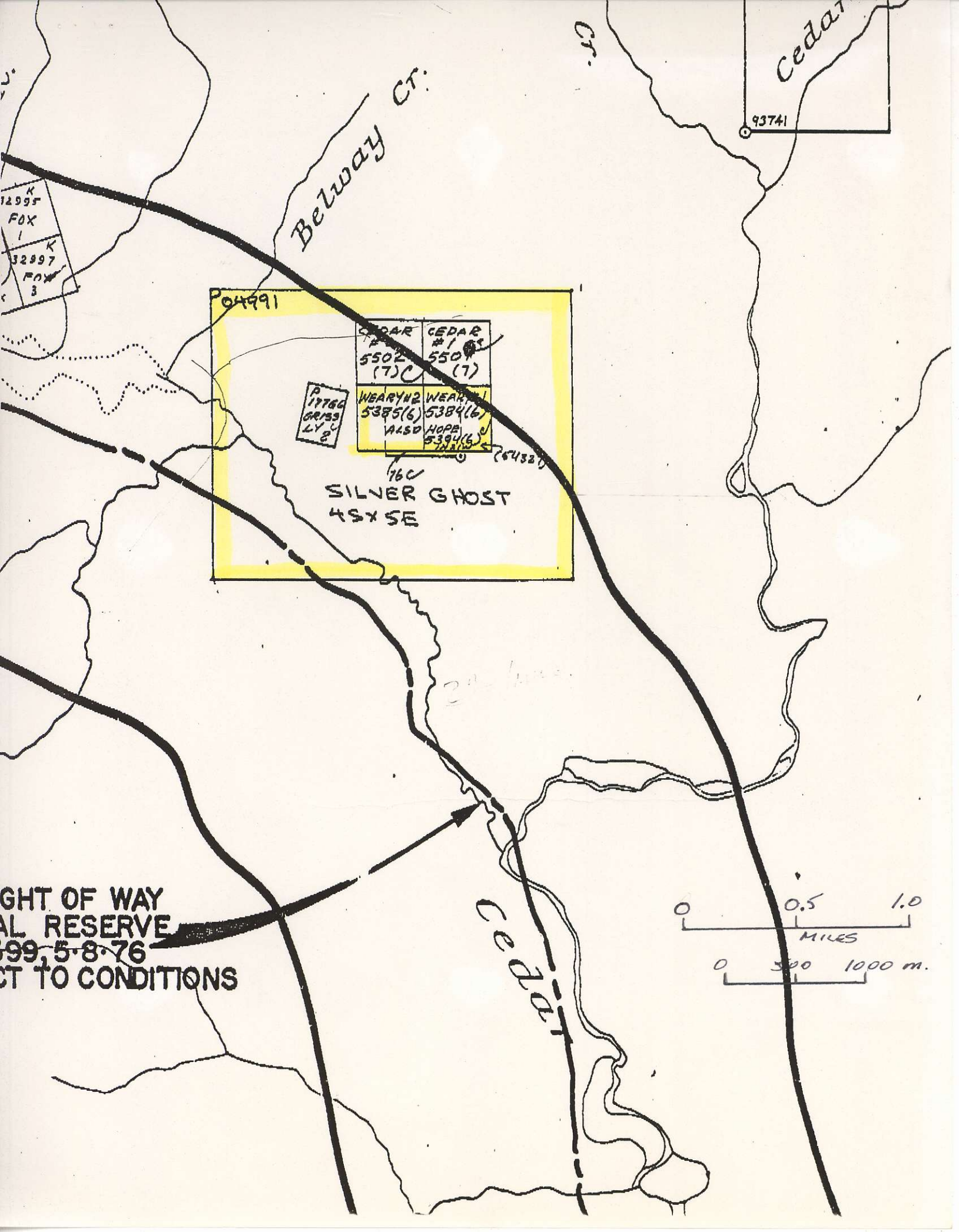


Aiyansh 23 m

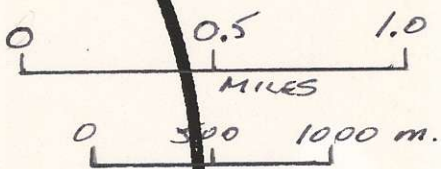
01 02 03 04 05 55' 06 07 08 09 10 50' 11 12 13

129°00'





RIGHT OF WAY
 AL RESERVE
 1999, 5-8-76
 CT TO CONDITIONS



04991

CEDAR #1 550 (7)	CEDAR #1 550 (7)
WEARY #2 5385(6)	WEARY #1 5384(6)
ALSO HOPE 5394(6)	ALSO HOPE 5394(6)

P 17760
GR/33
LY 2

760
SILVER GHOST
45X SE

204520

K
12595
FOX
1
K
32897
FOX
3

93741

Belway Ct.

Cedar

CT.

Cedar