

X	BS	F/S	HI HR	SLOPE DIST	VERT A	HORIZ A	DIST HZ	DIST VERT	ELV	N.	E.
MSA = MASTER STATION "A"											
BRG IP# 531 → M.S.A N-15°-46'-30"E											
ELV 5825.8' / 3.2808'/M ≡ 1775.70											
N 6,580.02' / 3.2808'/M ≡ 2,005.59											
E 38,332.57' / 3.2808'/M ≡ 11,683.71											
IP# 531									1775.70	2,005.59	11,683.71
MSA									1766.86	2,122.39	11,966.44
MN HUB-1			155 140	305.98	-41-00	128-13-30	305.85	-8.99 ^{+0.15}			
N-67-33-00E											
MSA											
* SHOTS # ① ... → ⑭											
* ALL SHOTS TAKEN ON GROUND BESIDE PVC PIPE WITH MARKER											
MN HUB-1			144 140	53.08	+1-44-00	151-36-30	53.05	+1.60 ^{+0.04}	1766.86	2,163.53	11,999.94
M-86-11											
N-40-56E	IP# 515			445.42	+1-58-00	153-23-00	445.16	+15.28	1782.18	2,458.69	12,258.10
CHECKS ✓									1782.18	2,458.69	12,258.10
①	M-86-9			431.32	+3-59-00	165-25-40	430.28	+29.96	1796.86	2,381.47	12,309.97
②	M-86-8			452.88	+5-38-30	174-41-00	450.69	+44.52	1811.42	2,332.35	12,365.23
③	M-85-2			461.21	+6-22-37	179-43-00	458.36	+51.27	1818.17	2,299.51	12,389.19
④	M-86-20			431.95	+5-05-30	186-32-45	430.24	+38.33	1805.23	2,240.29	12,380.22
⑤	M-86-12			404.96	+3-38-00	186-18-00	404.15	+25.66	1792.56	2,234.80	12,354.64
⑥	M-86-10			395.65	+3-22-00	189-11-30	394.97	+23.23	1790.13	2,212.97	12,350.88
⑦	M-86-6/7			408.77	+3-23-30	176-24-00	408.05	+24.18	1791.08	2,301.59	12,333.04
⑧	M-86-1/2			374.56	+0-49-00	177-13-00	374.52	+5.34	1772.24	2,282.05	12,305.22
⑨	M-86-4/5			347.63	+0-01-00	165-53-30	347.63	+0.10	1767.00	2,329.45	12,245.67
⑩	M-86-3			337.95	-1-37-30	176-14-00	337.81	-9.58	1757.32	2,271.62	12,269.50
⑪	M-86-18			299.60	-3-37-00	190-17-30	299.00	-18.90	1748.00	2,185.36	12,258.74
⑫	M-86-16/7			320.79	-1-41-30	189-46-45	320.65	-9.47	1757.43	2,192.72	12,279.28
⑬	M-86-4/15			348.69	+0-31-30	187-52-30	348.67	+3.19	1770.09	2,210.13	12,303.89
⑭	M-86-19			365.93	+1-40-30	186-33-40	365.77	+10.70	1777.60	2,222.52	12,318.24

NOT LOCATED IN "loose" SCREE SLOPE.

* IP# 515 TIE IN IS EXCELLENT SINCE 1972 SURVEY

- SCREE CREEP (DOWN HILL WESTERLY) WOULD ACCOUNT FOR A 1986 LOWER EASTING BY .26M 12,258.10
- SCREE CREEP (EAST → WEST FASHION) " " 2,458.69
- A MINIMAL NORTH MOVEMENT BY .05M

ALSO
- DOWN HILL CREEP WOULD ACCOUNT FOR A LOWER ELEVATION BY .08M 1782.18
FOR BENCH CONTROL + PRELIMINARY CALCS THIS MINING CONTROL SURVEY IS O.K.

SWANEX EXPLORATION SERVICES
KEVIN R.J. COSWAN B.Sc.
BOX 311, TELKWA, B.C.
CANADA V0J 2X0

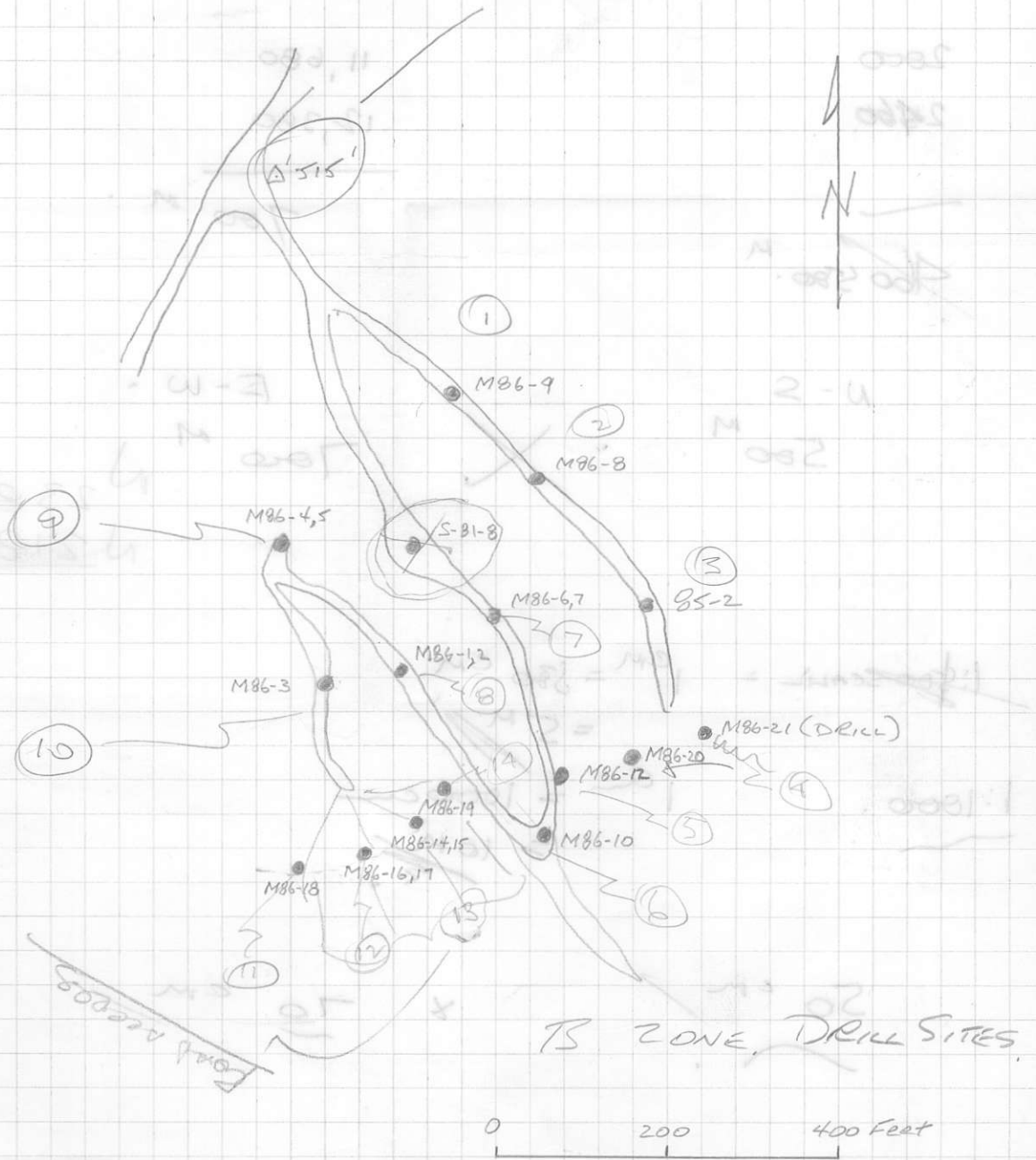
KEVIN COSWAN B.Sc., SWANEX.
OCT 2/86.

SEPT 19 → OCT 2/86

SG SWANEX.

SET IN SCREEN SHORE.

M-86-11



MIN HUB #1
ALSO MSA.

TS ZONE, DRILL SITES

0 200 400 Feet

*) ALL ON 502 PRISM SLOTS TO GROUND SURFACE PVC PIPE MARKING TOPS (*)

SWANEX EXPLORATION SERVICES
KEVIN R.J. COSWAN B.Sc.
BOX 311, TELKWA, B.C.
CANADA V0J 2X0

SKETCH ONLY
BY N.C. CARTER.

SGS 2000

SEPT 19/86

S T A T I O N S

CO-ORDINATES

Type	Tag No.	Description	Northings	Eastings	Elevations
OCIP	-	Trig. Stn. "FUBAR"	10,000.00	35,000.00	6467.0
CIP	533	Master Stn. "A"	6,580.02	38,332.57	5825.8 *
CIP	503	Master Stn. "B"	9,410.17	39,527.83	6278.3 *
CIP	536	Master Stn. "C"	3,259.34	35,494.71	6186.6 *
CIP	-	Master Stn. "D"	6,154.41	41,567.24	
IP	502	(Control Stn.)	6,995.33	39,710.54	5744.2 *
IP	531	(Control Stn.)	6,081.83	38,191.83	5719.2
IP	534	(Control Stn.)	6,665.73	38,249.05	5822.1
IP	535	(Control Stn.)	6,907.94	36,456.99	5979.1
IP	551	(Traverse Stn.)	13,998.84	51,375.58	-
IP	559	(Traverse Stn.)	6,310.13	45,375.24	-
IP	561	(Traverse Stn.)	18,979.01	49,570.60	-
IP	"BH"	(Traverse Stn.)	6,539.20	50,212.80	-
IP	500	Loc. Post No. 1 Chappelle No. 5-6			
		Loc. Post No. 2 Chappelle No. 3-4	6,302.93	39,487.72	5566.0 *
IP	505	Loc. Post No. 1 Gold 17-18	7,013.77	40,044.22	5645.9 *
IP	506	Loc. Post No. 1 Chappelle No. 3-4			
		Loc. Post No. 2 Chappelle 1-2	7,728.63	39,540.16	5881.7
IP	507	Loc. Post No. 1 Chappelle 9-10			
		Loc. Post No. 2 Chappelle 7-8	7,828.90	37,878.64	5538.9
IP	509	Loc. Post No. 1 Chappelle No. 17-20	5,353.40	35,078.62	5484.2
IP	510	Wt. Loc. Post Chappelle No. 17-18, 33-36	5,921.94	35,082.26	5644.8 *
IP	511	Wt. Loc. Post Chappelle No. 19-22	4,896.43	35,057.82	5497.7 *
IP	515	Loc. Post No. 1 Gold 19-20	8,066.32	40,217.73	5847.3
IP	516	Loc. Post No. 2 Gold 17-18			
IP	517	Loc. Post No. 1 Chappelle No. 25-30	8,890.26	41,642.99	5651.7
IP	517	Loc. Post No. 2 Chappelle No. 43-44	10,536.20	39,630.74	5851.4
IP	529	Loc. Post No. 1 Chappelle No. 13-14			
		Loc. Post No. 2 Chappelle No. 11-12	5,315.47	37,551.78	5271.3
IP	530	Loc. Post No. 2 Chappelle No. 13-14	3,554.33	37,477.81	5312.4
IP	538	Loc. Post No. 1 Gold 21-22	9,242.24	40,749.89	-
IP	548	Loc. Post No. 2 Gold 19-20	8,535.93	36,333.56	-
IP	548	Loc. Post No. 1 Gold 13-14			

IP	529	Loc. Post No. 1 Chappelle No. 13-14	18,550.20	39,830.74	5831.4
		Loc. Post No. 2 Chappelle No. 11-12	5,315.47	37,551.78	5271.3
IP	530	Loc. Post No. 2 Chappelle No. 13-14	3,554.33	37,477.81	5312.4
IP	538	Loc. Post No. 1 Gold 21-22			
		Loc. Post No. 2 Gold 19-20	9,242.24	40,749.89	-
IP	548	Loc. Post No. 1 Gold 13-14	8,535.93	36,333.56	-
IP	558	Loc. Post No. 1 Gold 15-16			
		Loc. Post No. 2 Gold 13-14	9,488.39	36,554.89	-
IP	552	Loc. Post No. 1 Saunders 58-59			
		Loc. Post No. 2 Saunders 56-57	19,269.47	51,952.43	-
IP	560	Wt. Loc. Post Chappelle No. 134, 136-137	6,479.35	53,908.78	-
IP	562	Loc. Post No. 1 Saunders 82-83			
		Loc. Post No. 2 Saunders 60-61	19,779.84	54,216.31	-
PP	504	#1, N.W. Chappelle No. 1	9,106.16	39,488.31	6179.6 * ✓
PP	-	#2, N.E. Chappelle No. 1	9,162.57	40,987.25 ✓	-
PP	-	#3, S.E. Chappelle No. 1	7,785.05	41,039.10 ✓	-
PP	-	#4, Bend E. Bdy.	7,673.50	41,039.14 ✓	6157.1 ✓
PP	-	#5, S.E. Chappelle No. 3	6,286.20	40,988.12	-
PP	-	#6, S.E. Chappelle No. 5	4,831.67	41,008.14	-
PP	501	#7, S.W. Chappelle No. 5	4,809.99	39,509.34	5371.5
PP	-	#8, S.W. Chappelle No. 6	4,788.29	38,009.47	-
P. Rock	-	#9, N.W. Chappelle No. 6	6,281.23	37,987.87	-
PP	-	#10, Bend W. Bdy.	6,358.07	37,988.73	-
PP	-	#11, S.E. Chappelle No. 9	6,532.18	37,995.14	-
PP	513	#13, S.W. Chappelle No. 9	6,619.13	37,607.38	5414.0
PP	-	#14, S.W. Chappelle No. 10	6,947.31	36,143.73	-
PP	-	#15, N.W. Chappelle No. 10	8,014.56	36,383.03	-
PP	-	#16, N.W. Chappelle No. 8	9,142.71	36,413.70	-
PP	508	#17, N.E. Chappelle No. 8	9,103.07	37,912.34	5691.5
PP	-	#18, N.E. Chappelle No. 7	9,103.07	39,406.22	-
Spike in conc. bk.		Base Stn. "A"	6,702.71	39,672.75	5696.5 (top sp 5696.0 (top co
Spike in conc. bk.		Base Stn. "B"	6,461.15	39,102.37	5659.9 (top sp 5659.4 (top co
OIP	-	N.W. Lot 6009	2,938.74	34,766.44	-
OIP	-	N.E. Lot 6009, N.W. Lot 6008	3,939.65	35,881.61	5595.7
OIP	-	N.E. Lot 6008	4,938.95	36,999.97	5248.2

Notes: Elevations are to geodetic datum and derived from Trig. Stn. "FUBAE" (Elev. = 6
Elevations marked * confirmed by two or more readings.
All other elevations determined from single readings only.
Elevations given to top of CIP, PP, or IP.