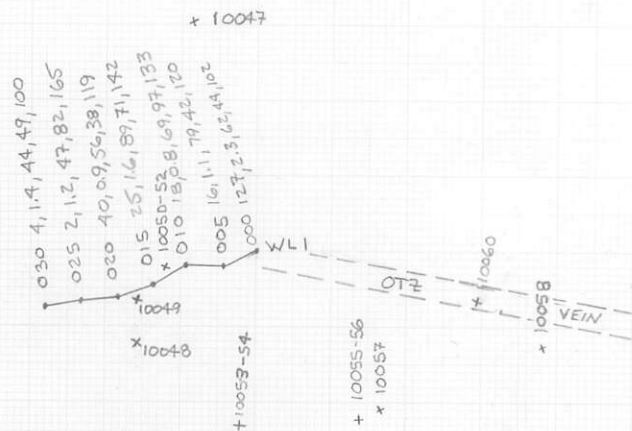


\* PISCAN 1E/2N CAIRN



ROCK SAMPLES

	Au	Ag	Cu	Pb	Zn
10047 -	2	0.9	16	12	13
10048 -	3	0.8	59	31	430
10049 -	1	1.2	62	37	138
10050 -	17	3.0	98	64	169
10051 -	58	2.0	51	21	112
10052 -	83	1.5	59	26	173
10053 -	15	1.4	66	16	13
10054 -	4	0.8	39	18	29
10055 -	1	1.0	39	17	46
10056 -	2	0.9	40	10	67
10057 -	1	0.8	36	4	16
10058 -	4	0.2	6	6	4
10059 -	2	1.4	48	29	71
10060 -	3	0.8	44	73	34
10061 -	121	2.3	17	26	44

WEST CHAPPELLE

	Au	Ag	Cu	Pb	Zn
10062 -	11	1.2	8	29	80
10063 -	3	1.9	10	32	30
10064 -	2	1.4	9	29	29
10065 -	6	0.8	10	16	6
10066 -	3	0.9	9	61	38
10067 -	16	1.1	20	20	24

SOIL LINE WLI AND ROCKCHIP  
TRAVERSE IN ZONE WEST OF  
WEST CHAPPELLE  
SCALE 1:1000

Baker Mine 830291