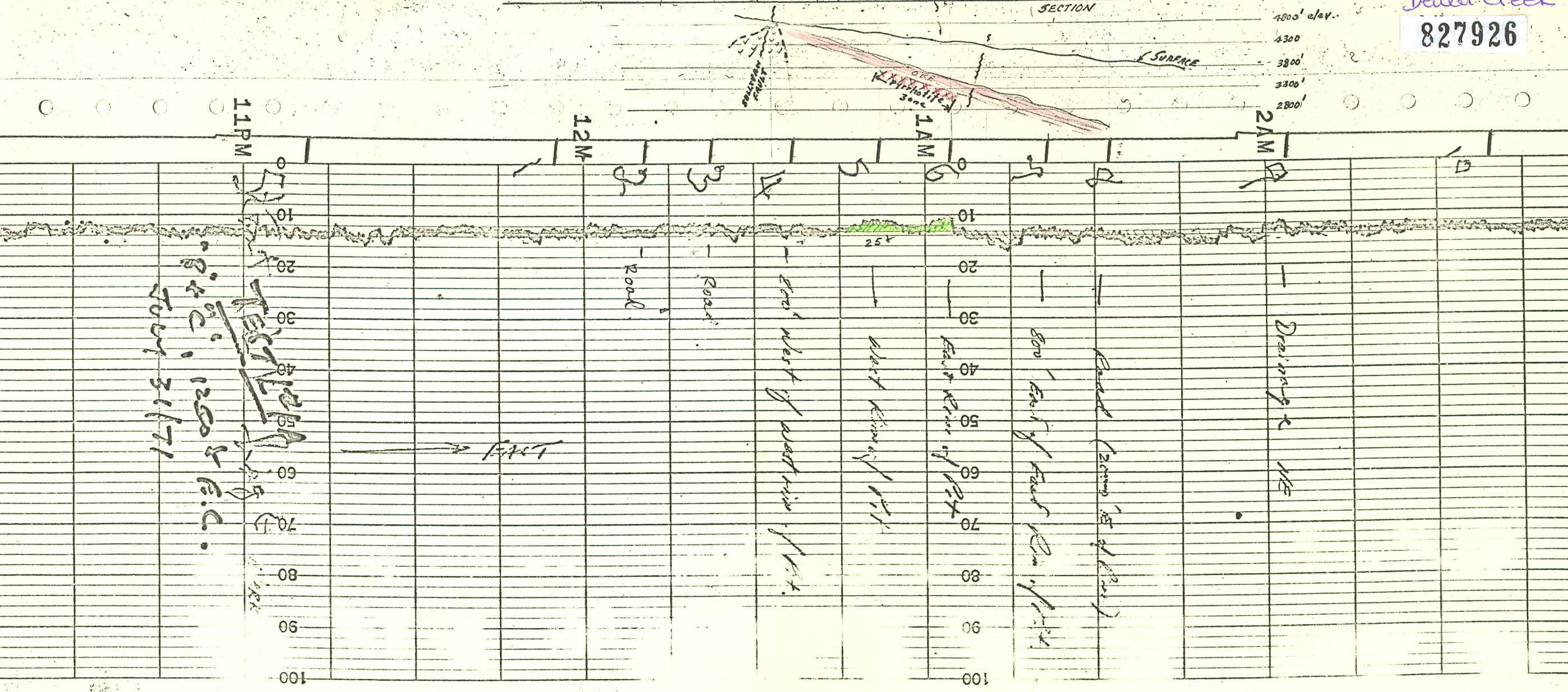


Dewar Creek
827926



MADE IN U.S.A. CHART NO. A7-1 TEXAS INSTRUMENTS INC. (ATFD), HOUSTON, TEXAS, U.S.A.

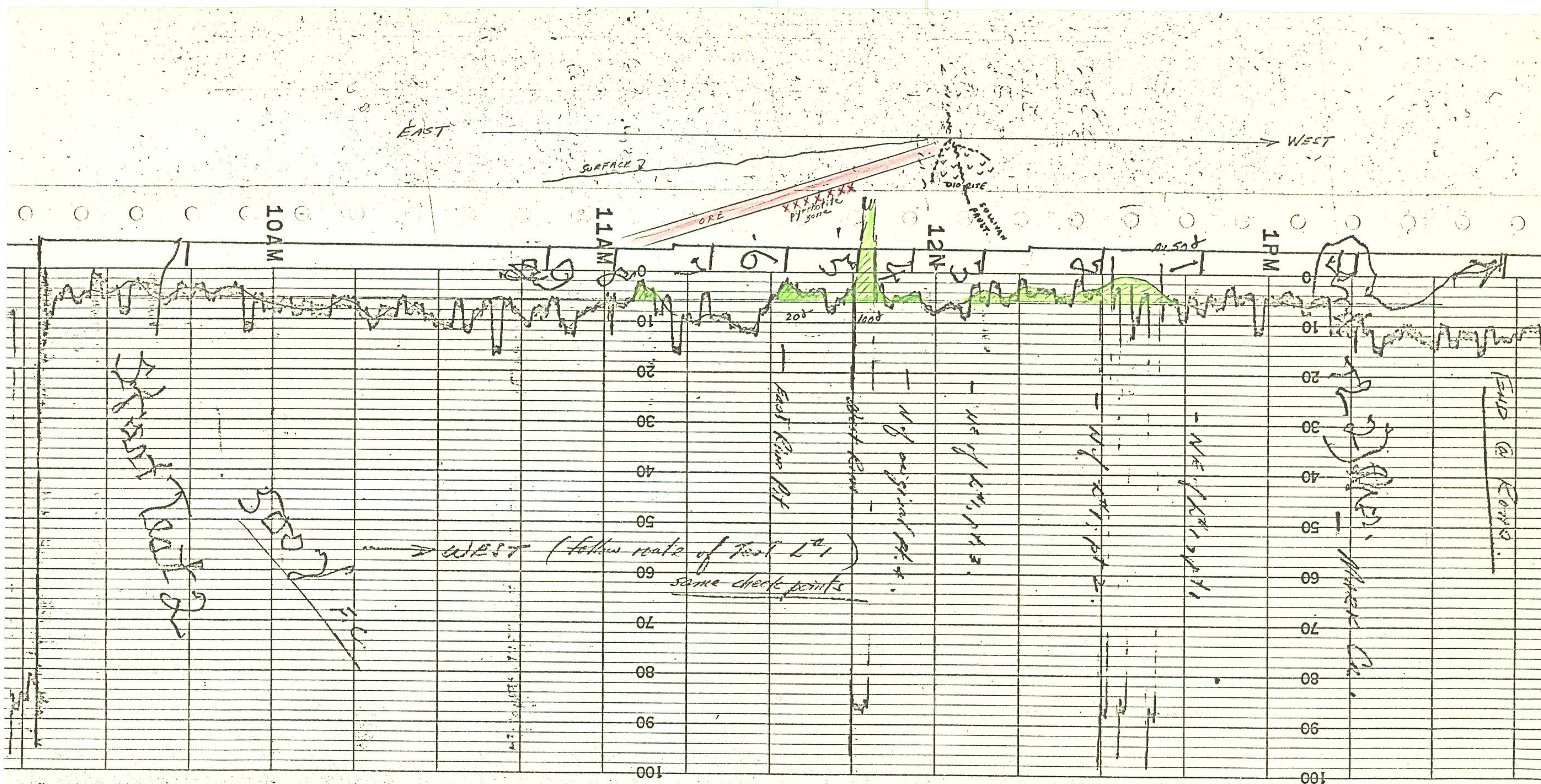
ELSEC AEROMAGNETIC TEST FLIGHT OVER SULLIVAN MINE, B.C.
after Narrow Band Adjustment to Magnetometer
on "B" + "C" Setting, 1250⁺ FULL CHART
JULY 31, 1971 J.L.

LINE #1A

72

LINE #1A

1250⁺ FULL CHART



TE

70

FEET LEFT

0 1
inches

0 1 2
centimetres

This reference scale bar has been added to the original image. It will scale at the same rate as the image, therefore it can be used as a reference for the original size.

BRITISH COLUMBIA
GEOLOGICAL SURVEY

MADE IN U.S.A.

CHART NO. A7-1

TEXAS INSTRUMENTS INCORPORATED, HOUSTON, TEXAS, U.S.A.

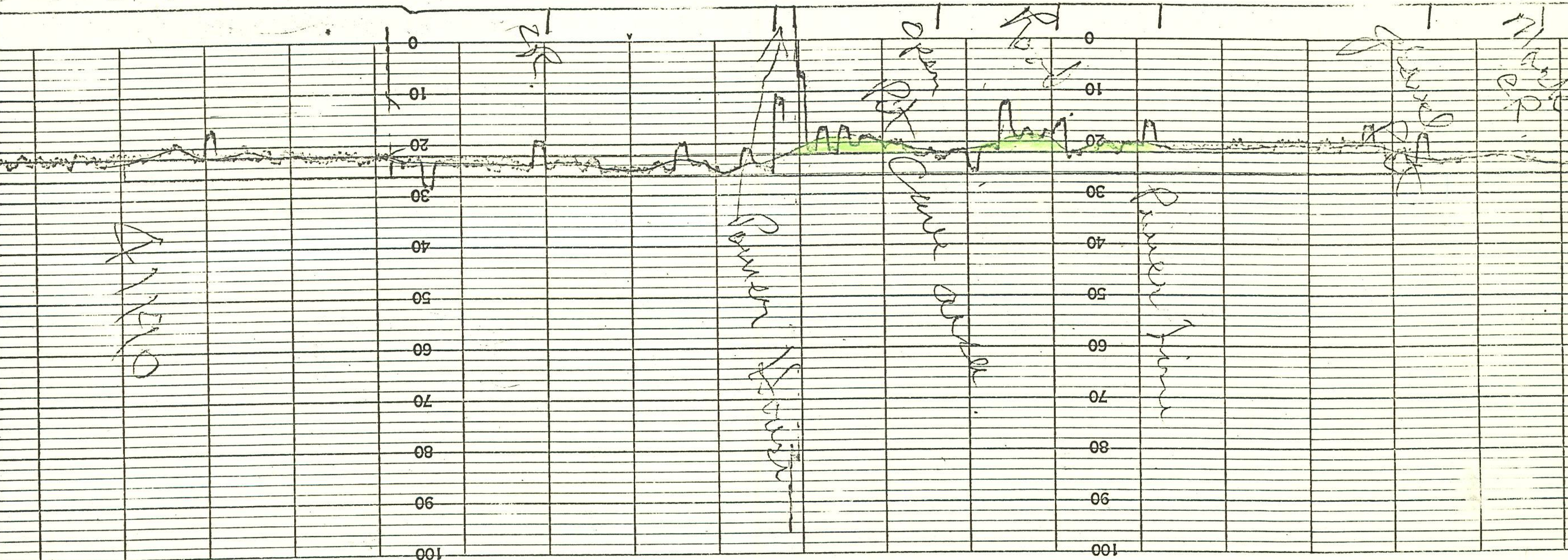
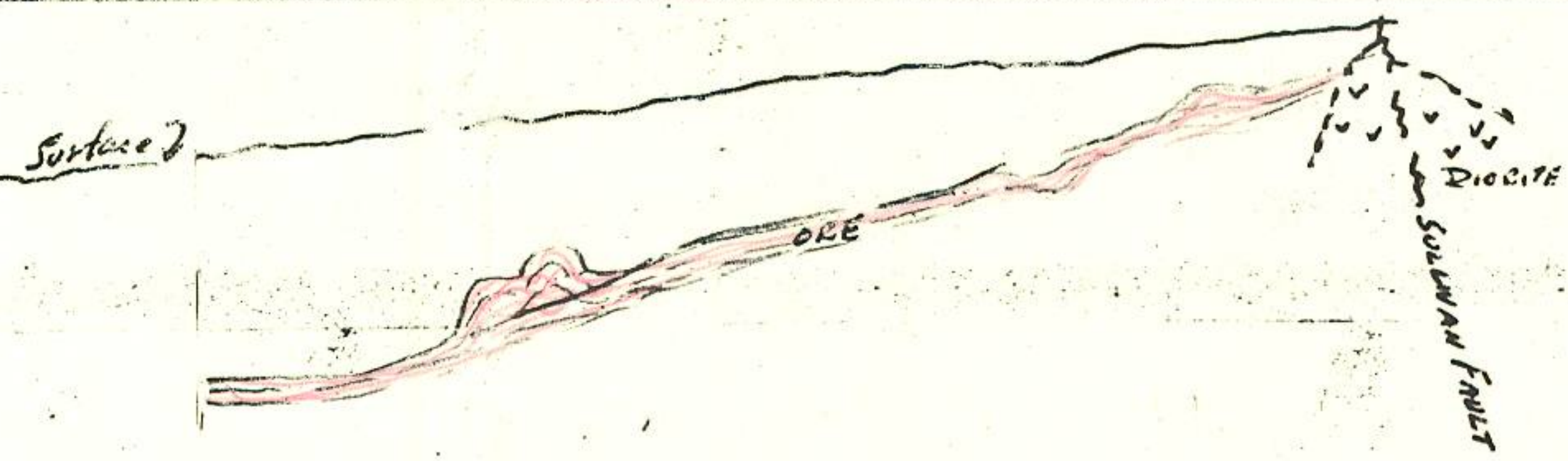
ELSEC AEROMAGNETIC TEST FLIGHT OVER SULLIVAN MINE, B.C.
after Narrow Band Adjustment
on "B" & "C" SETTING, 500' FULL CHART
July 31, 1971. J.L.

LINE # 1
500' FULL CHART

EAST ←

→ FLIGHT

→ WEST

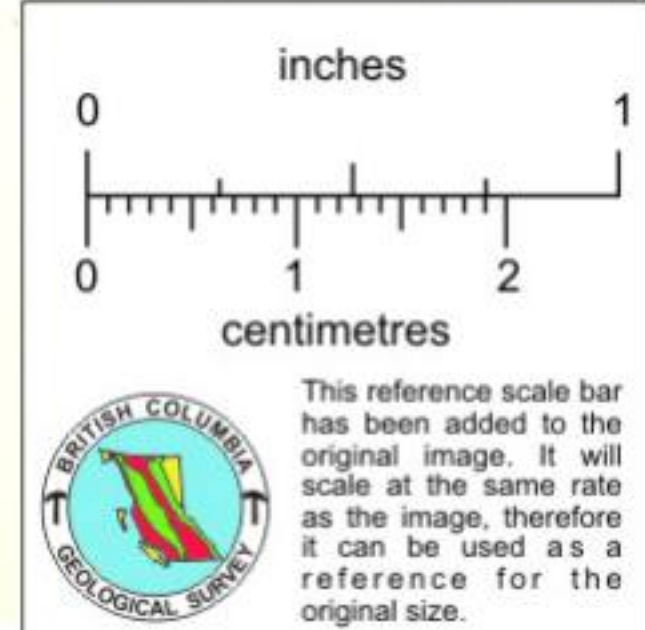


TEXAS INSTRUMENTS INCORPORATED, HOUSTON, TEXAS, U.S.A.

MADE IN U.S.A. CHART NO. A7 U.S.A., HOUSTON, TEXAS, U.S.A.

ELSEC AEROMAGNETIC TEST FLIGHT
 OVER SULLIVAN MINE
 ON "B+C" SETTING
 JUNE 6, 1971 A.L.

94
 FEET
 LEFT
 53



LINE #A
 1250' FULL CHART

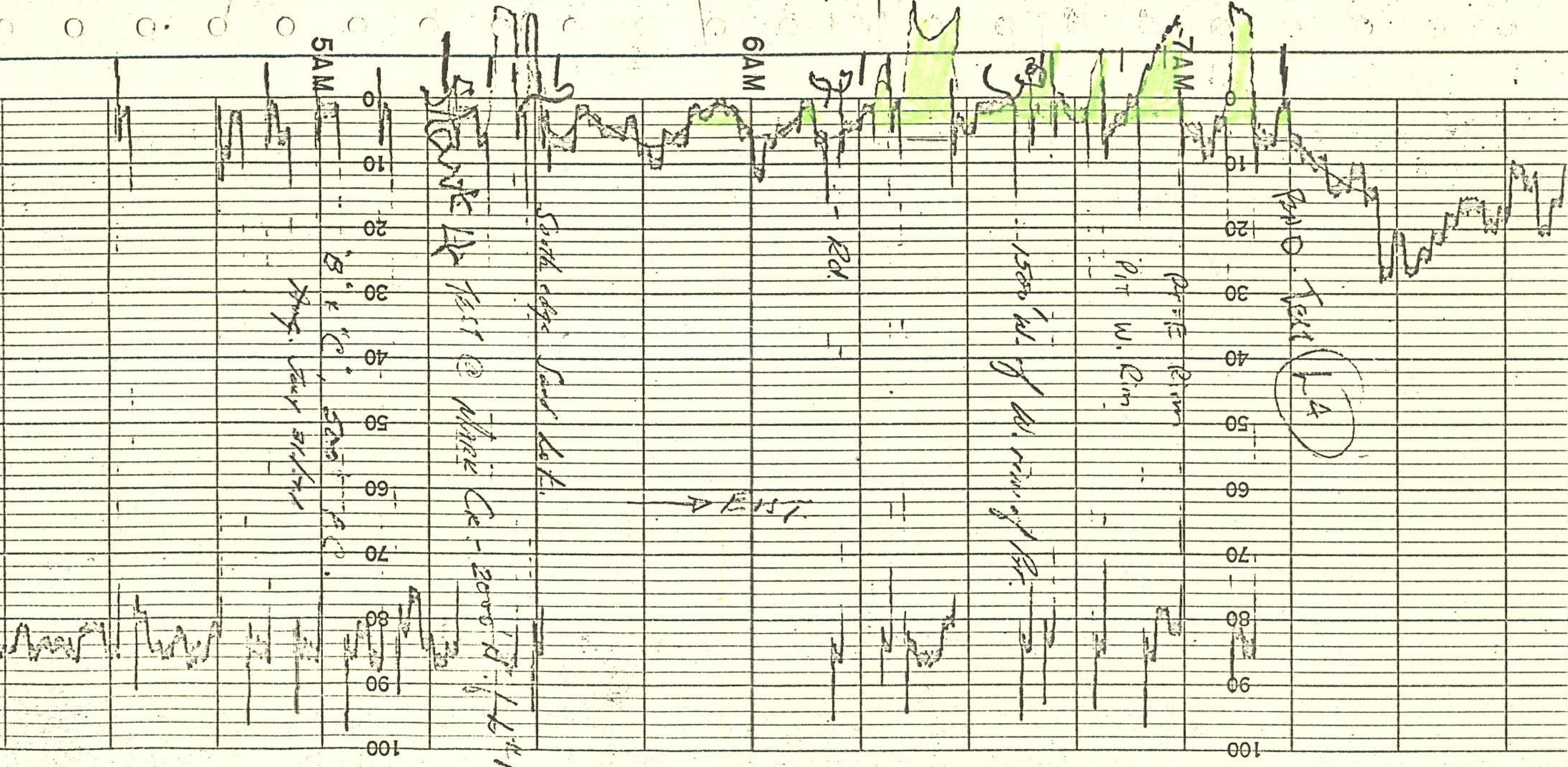
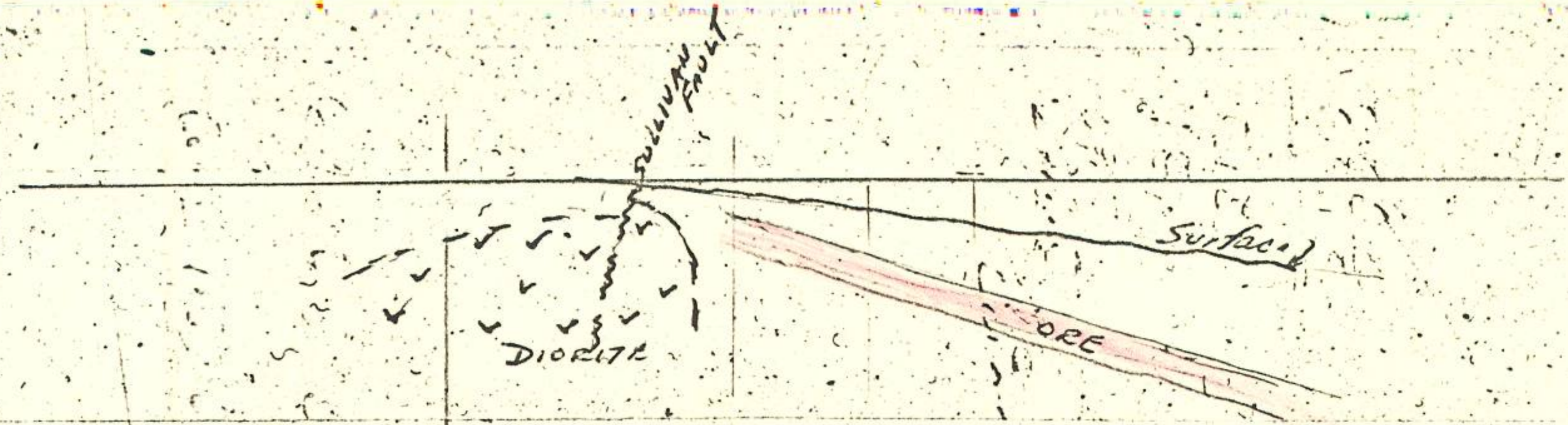
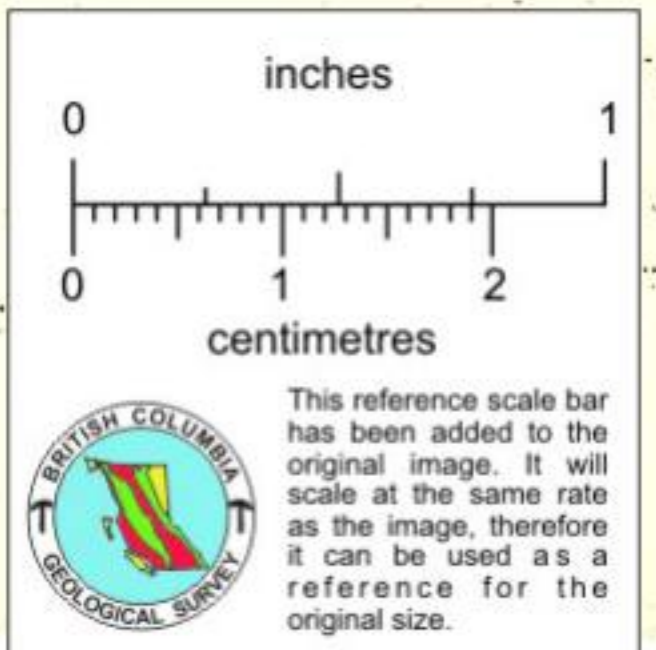


CHART NO. A7-1 MADE IN U.S.A.

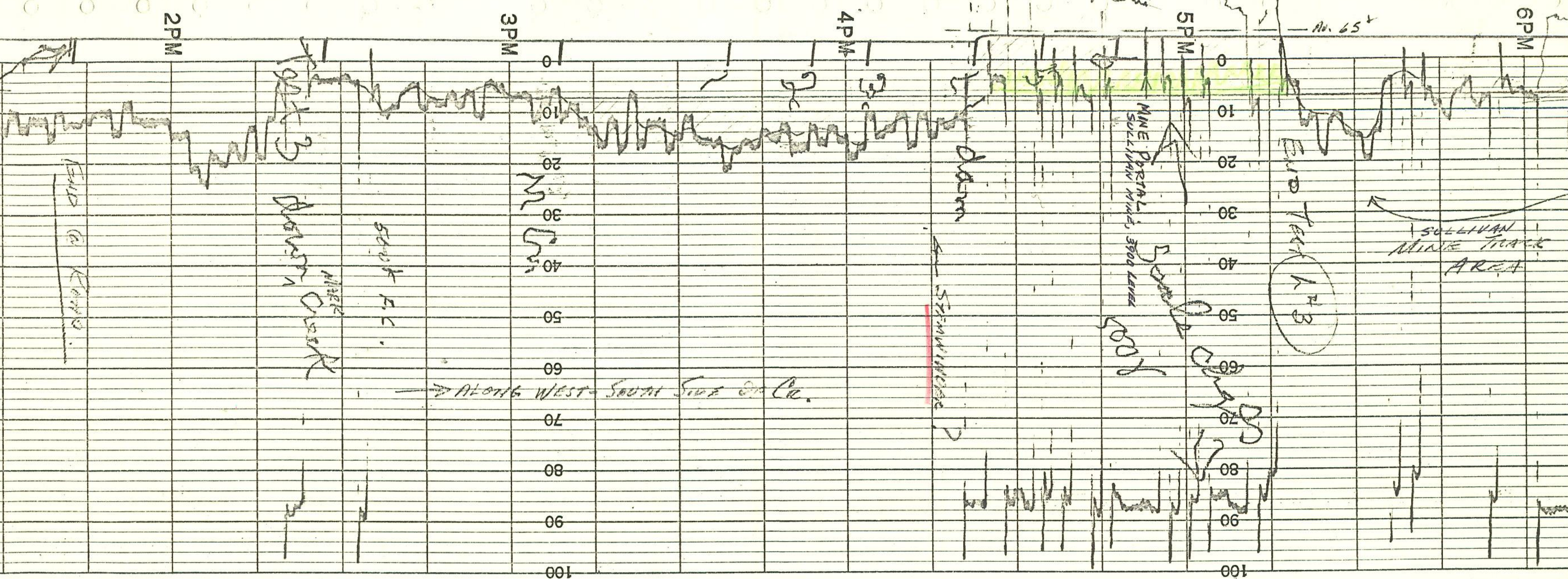
65
 ELSEC AEROMAGNETIC TEST FLIGHT OVER SULLIVAN MINE, B.C.
 after Narrow Band Adjustment
 on "B" + "C" Setting, 500^g Full Chart

LINE # 4
 500^g FULL CHART



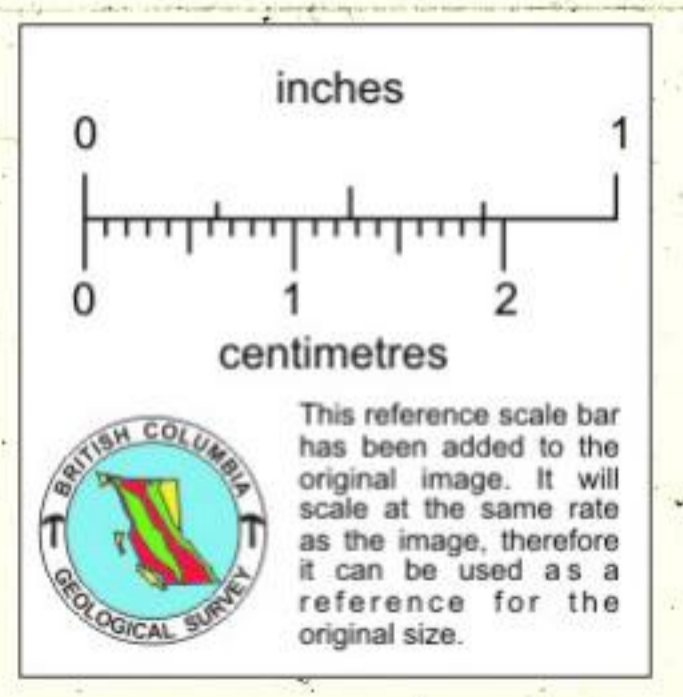
TEXAS INSTRUMENTS INCORPORATED, HOUSTON

→ EAST

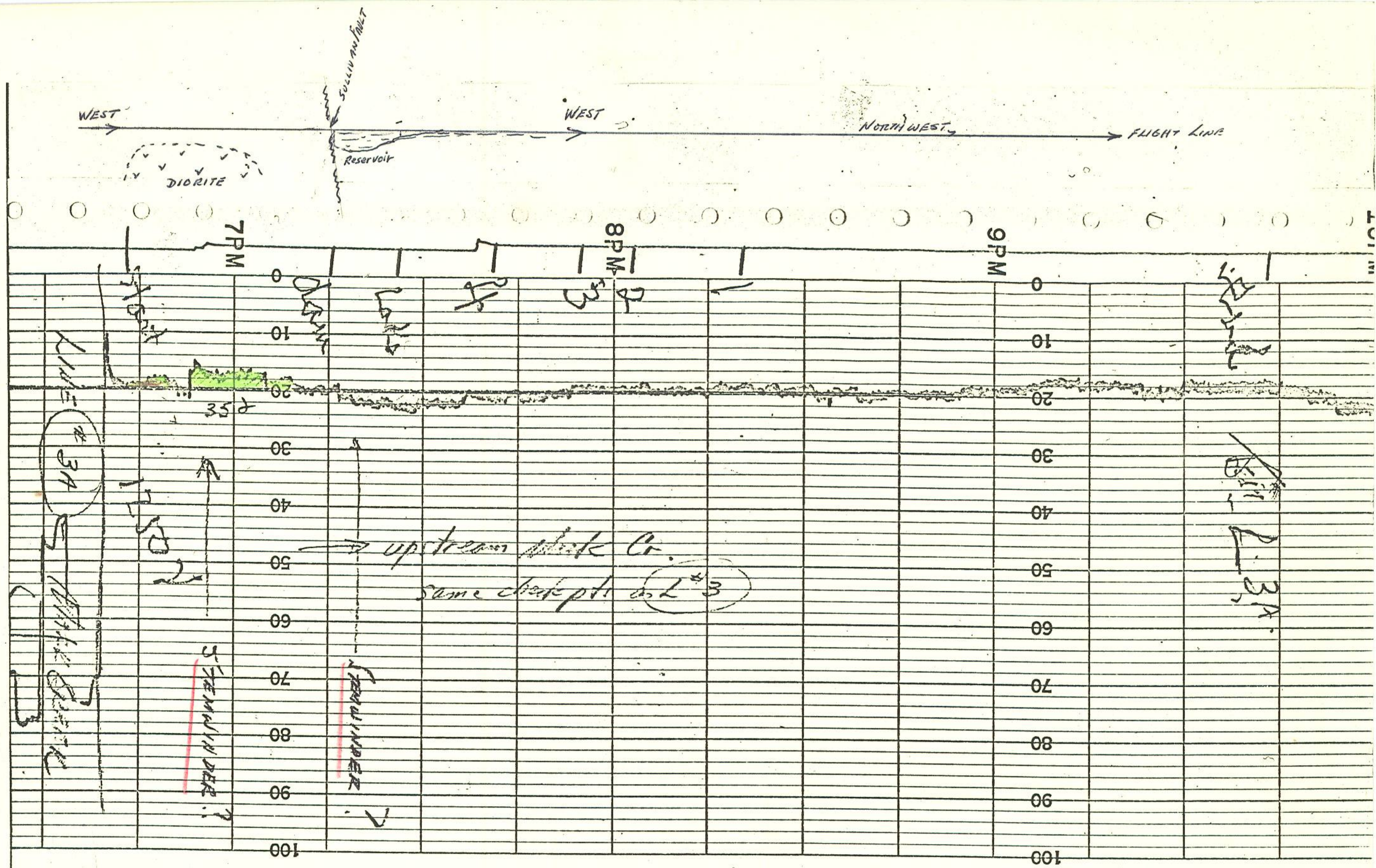


TEXAS INSTRUMENTS INCORPORATED, HOUSTON, TEXAS, U.S.A. CHART NO. A7-1 MADE IN U.S.A. 69 FEET LEFT

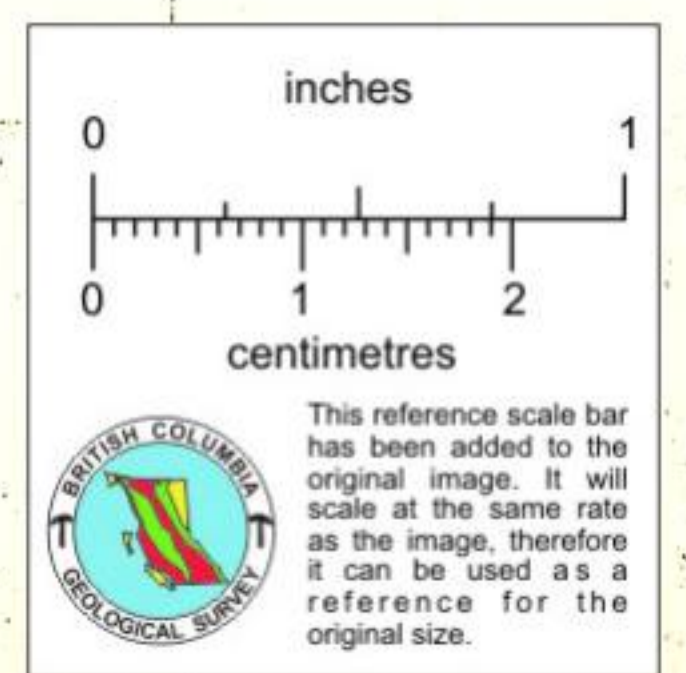
ELSEC AEROMAGNETIC TEST FLIGHT
 OVER STEMWINDER DEPOSIT
 JULY 31, 1971 J.L.



LINE # 3
 500' FULL CHART



TEXAS INSTRUMENTS INCORPORATED, HOUSTON, TEXAS, U.S.A. CHART NO. A7-1 MADE IN U.S.A.



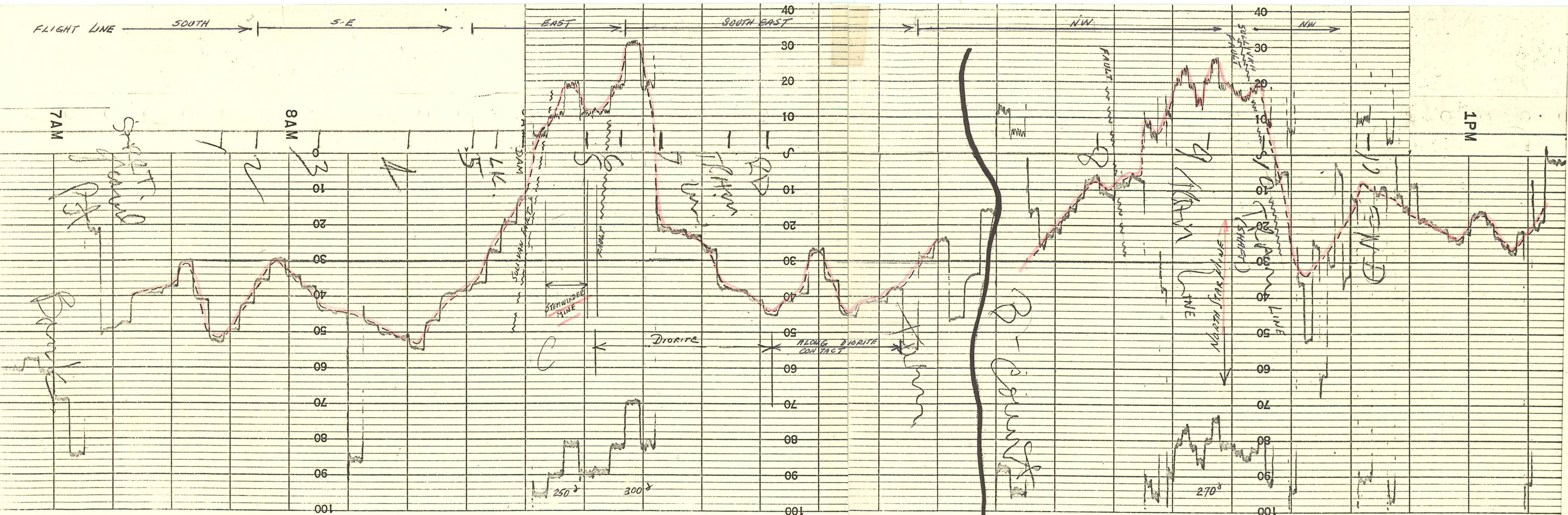
ELSEC MAGNETOMETER TEST FLIGHT
OVER STEMWINDER DEPOSIT

JULY 31, 1971

J.L.

LINE #3A
1250' FULL CHART

FLIGHT LINE SOUTH S-E EAST SOUTH EAST N-W N-NW



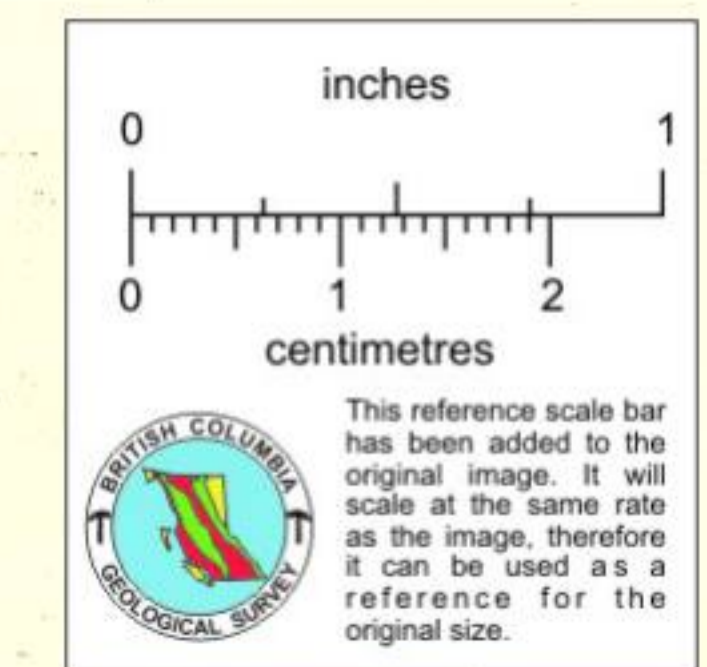
TEXAS INSTRUMENTS INCORPORATED, HOUSTON, TEXAS, U.S.A.

MADE IN U.S.A. CHART NO. A7-1

TEXAS INSTRUMENTS INCORPORATED, HOUSTON, TEXAS, U.S.A.

ELSEE AEROMAGNETIC TEST FLIGHT 5
STEMWINDER MINE
 500° FULL CHART, "C" (SLOW) COUNT.
 JUNE, 1971
 J.L.

61
 FEET LEFT
LINE #10
 500° FULL CHART



NORTH STAR MINE
 500° FULL CHART, "B" (FAST) COUNT
 JUNE 1971
 J.L.

LINE #11
 500° FULL CHART