

KERR ADVISOR MINES LTD.  
 DEWAR CREEK PROJECT, B.C.  
 NINE LAKE M.C. GROUP

TRENCHES 5+6 GEOLOGY  
 PITS 1-9 ROCK ASSAY  
 SOIL PROFILE ASSAY  
 SOIL GEOCHEM DISPERSION

SCALE: 1"=100' or as shown

OCT. 1/83 28 FIGURE = NL-73-3

827922

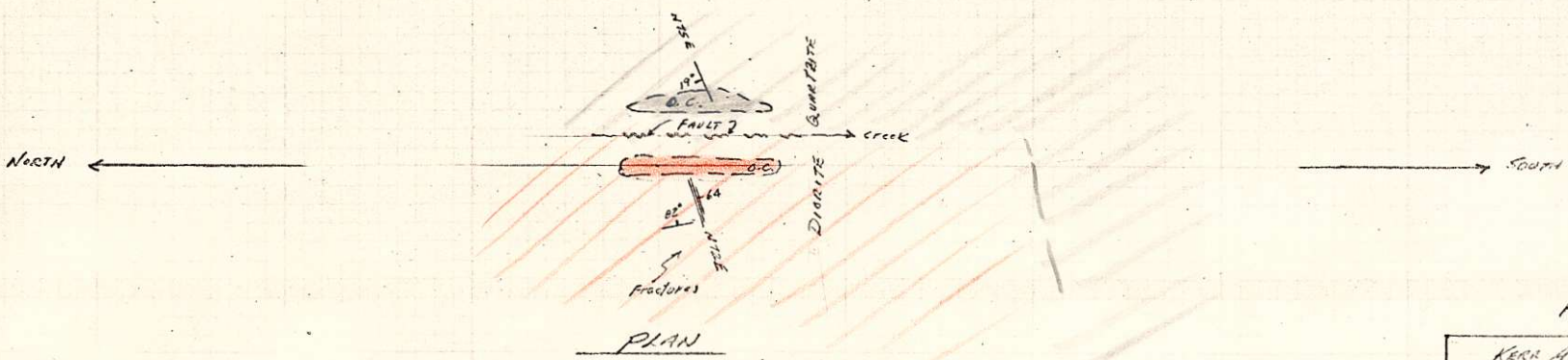
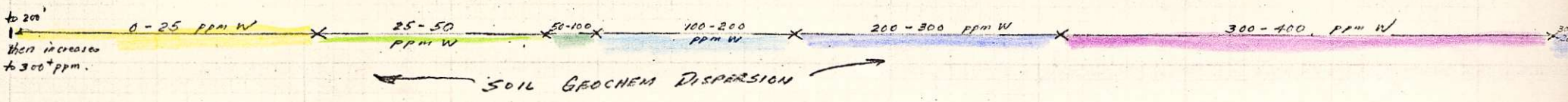
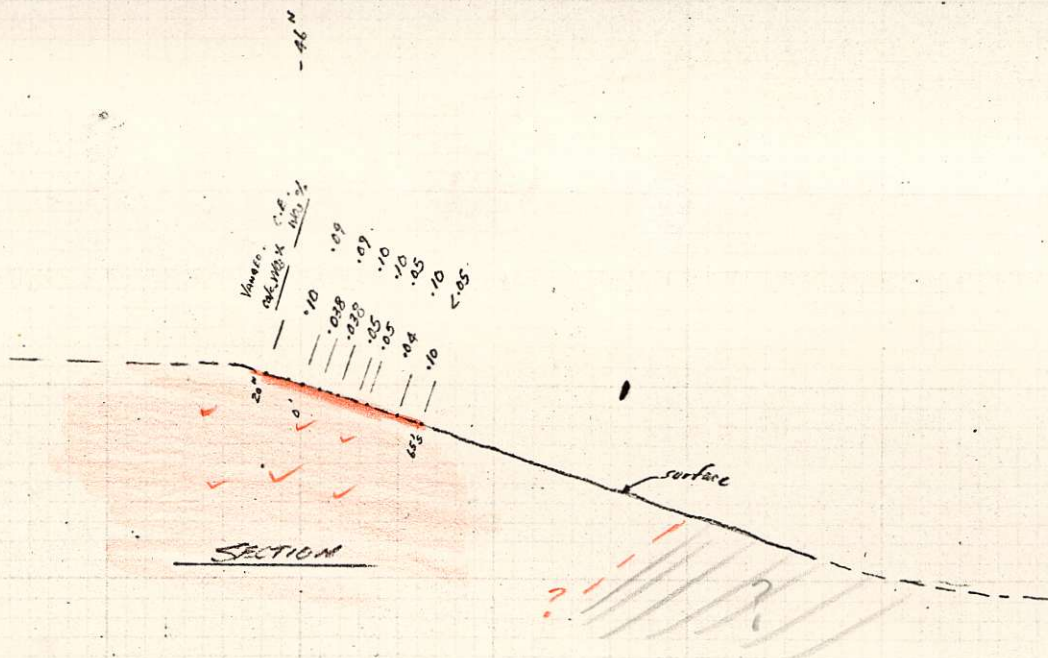
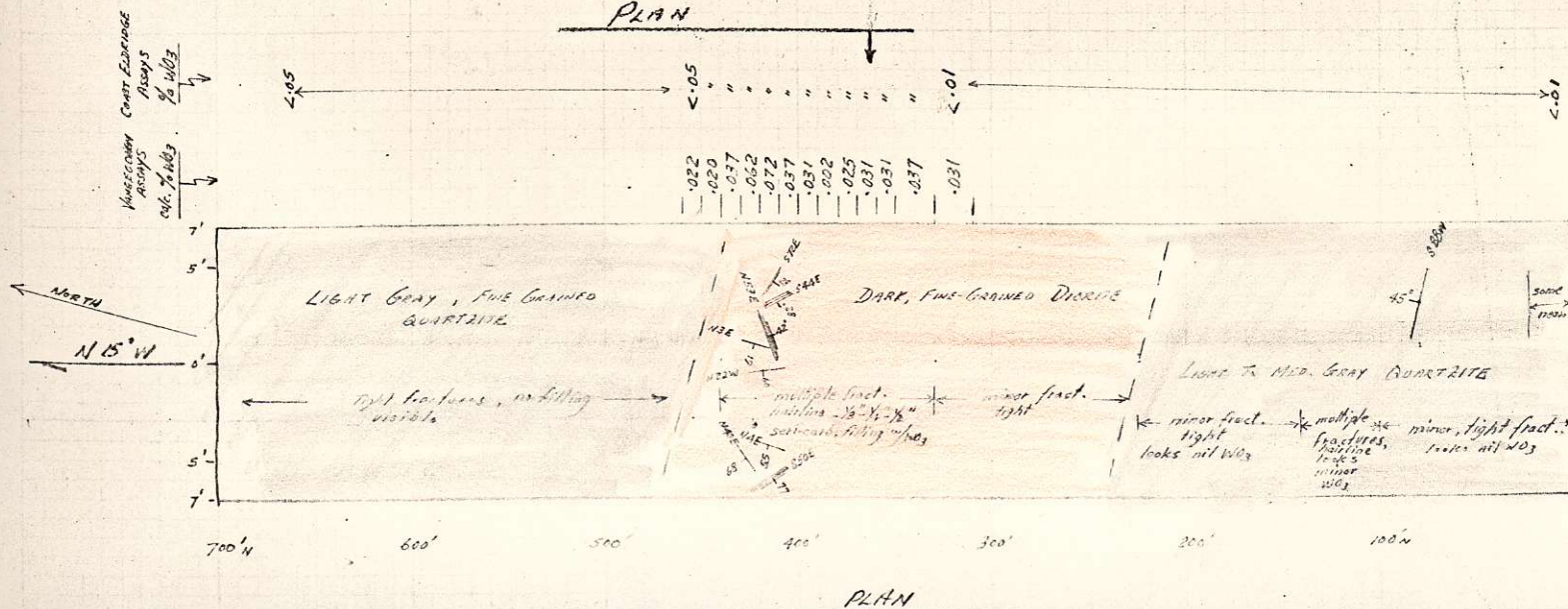
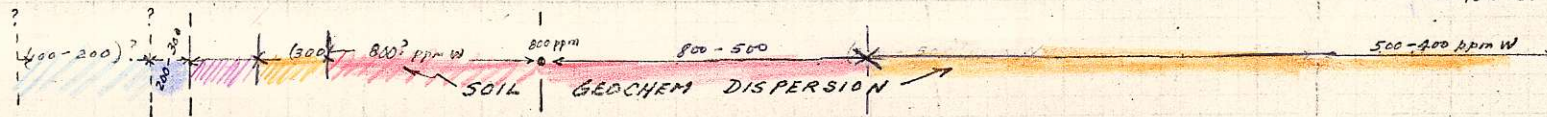
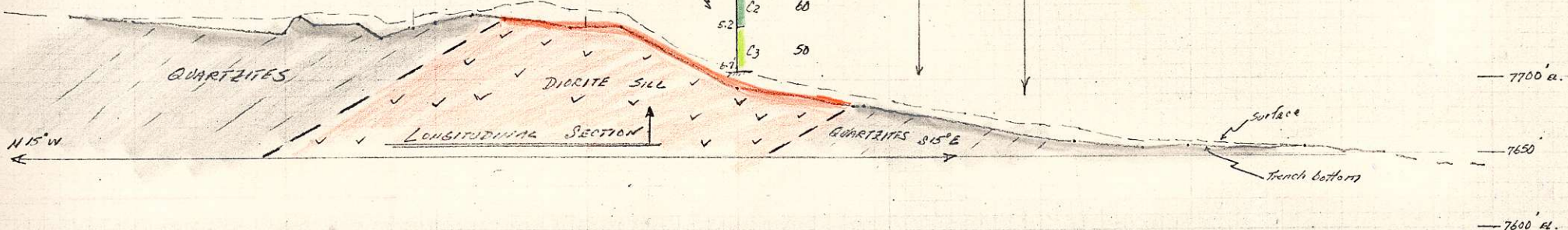
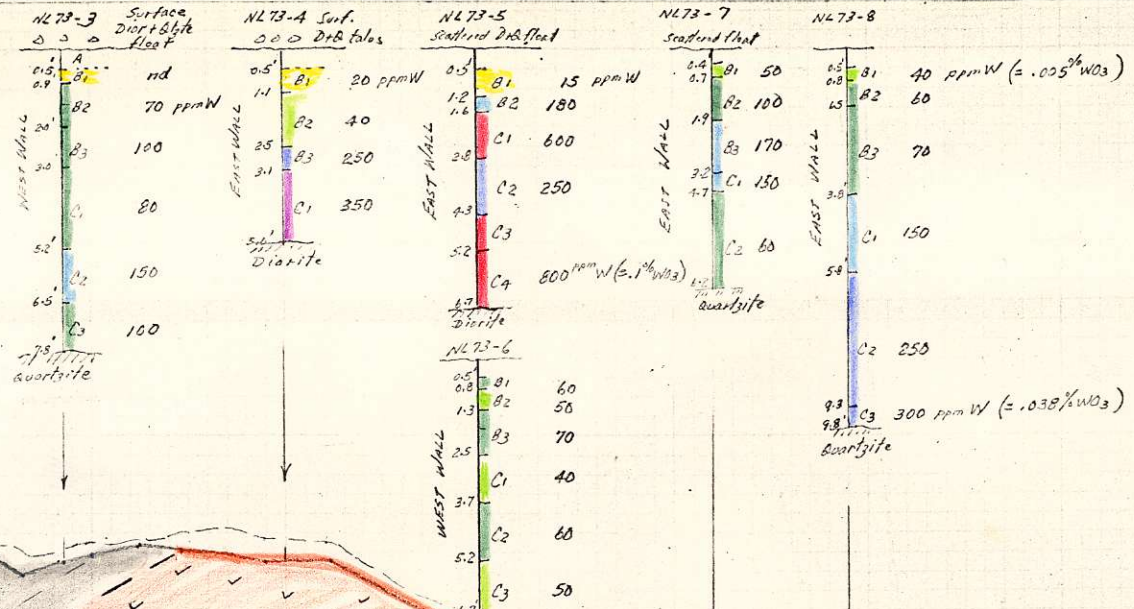


FIGURE NL-73-

KERR HADISON MINES LTD.	
DENMARK CREEK PROJECT, B.C.	
NINE; LAKE H.C. GROUP	
FAULT ZONE:	GEOLOGY
(500' E of Trench #2)	Rock Assay
	SOIL GEOCHEM DISPERSION
SCALE = 1" = 100'	
Oct 1973 J.C.	Fig. NL-73-4

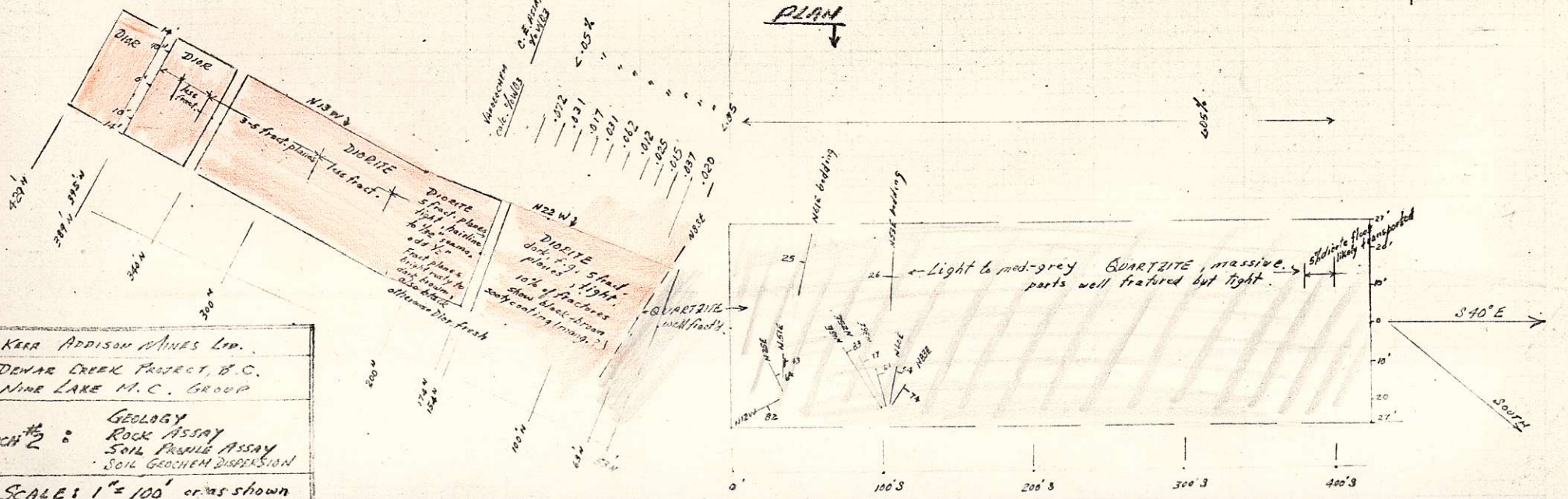
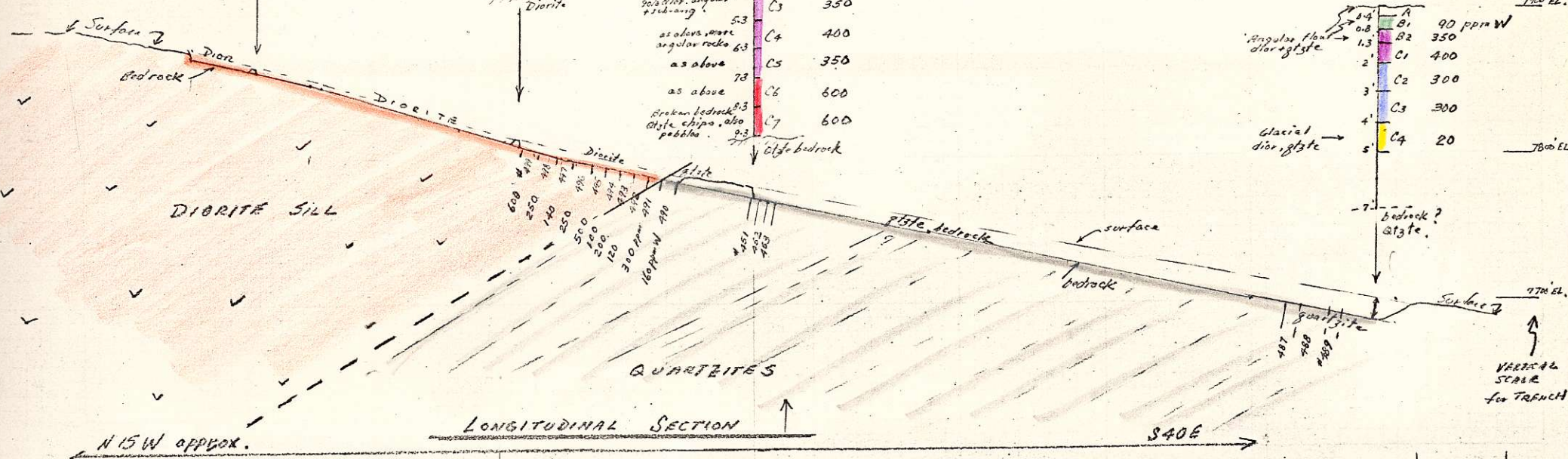
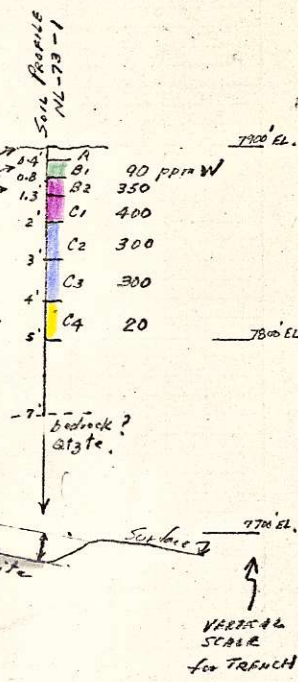
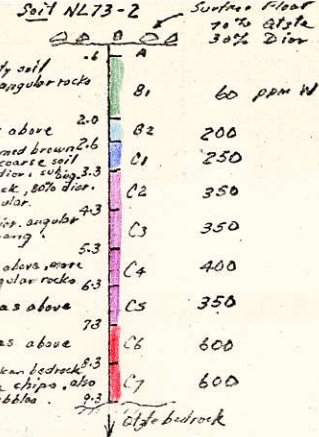
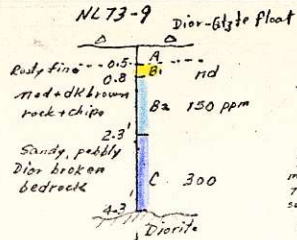
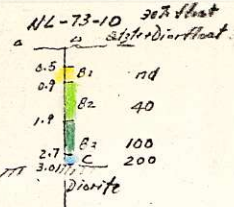


KEAR ADISON MINES LTD.  
 DENVER CREEK PROJECT, B.C.  
 NINE LAKE M.C. GROUP

Geology  
 TRENCH #1: ROCK ASSAY  
 SOIL PROFILE ASSAY  
 GEOCHEM DISPERSION

SCALE: 1" = 100' or as shown

FIG. NL-73-1 - Oct/73 9/6



KERR ADDISON MINES LTD.  
DENAR CREEK PROJECT, B.C.  
NINE LAKE M.C. GROUP

GEOLOGY  
TRENCH #2 :  
ROCK ASSAY  
SOIL PROFILE ASSAY  
SOIL GEOCHEM DISPERSION

SCALE: 1" = 100' or as shown

OCT/13 7:26 FIG. NL-73-2

DOC MINERAL CLAIMS, B.C.  
SECTION C-C'  
(LOOKING DUE NORTH)

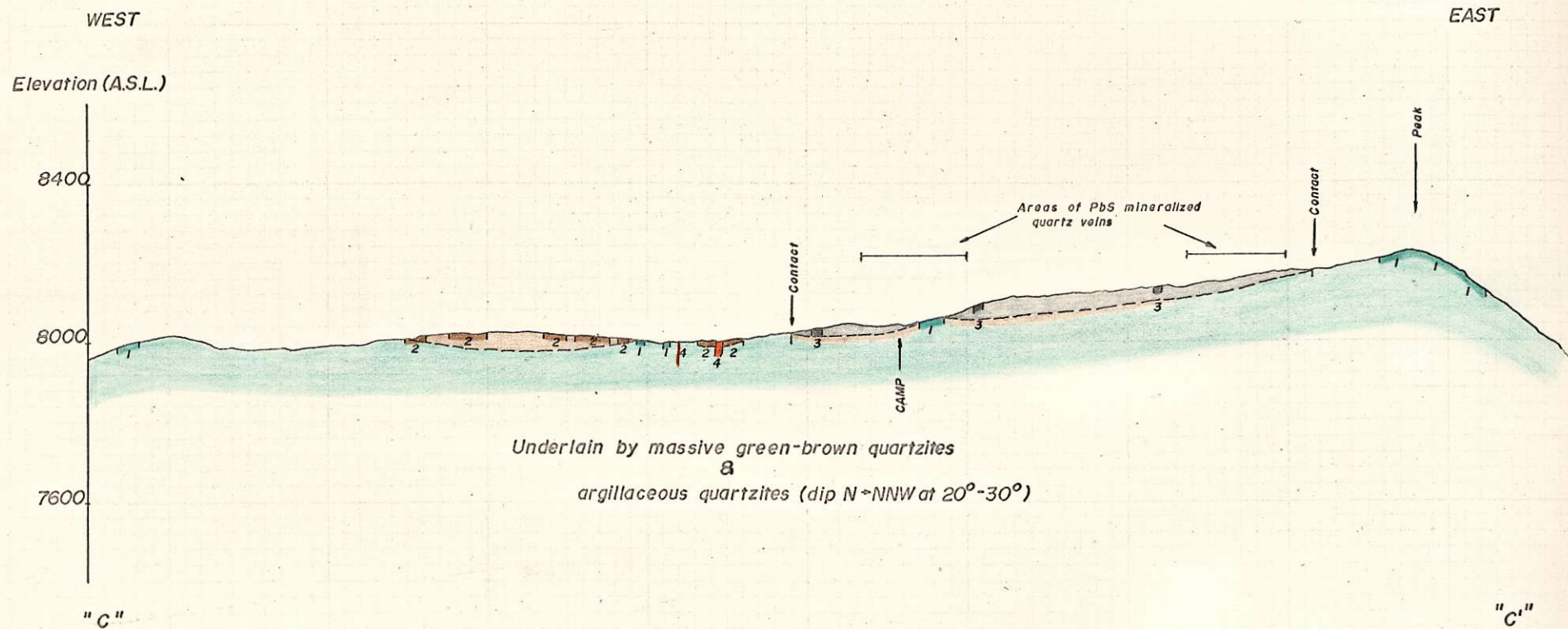


FIG. D-73-1

HORIZONTAL & VERTICAL SCALE

0' 200' 600'

1" = 400'

To accompany GEOLOGICAL PLAN (Oct 73)

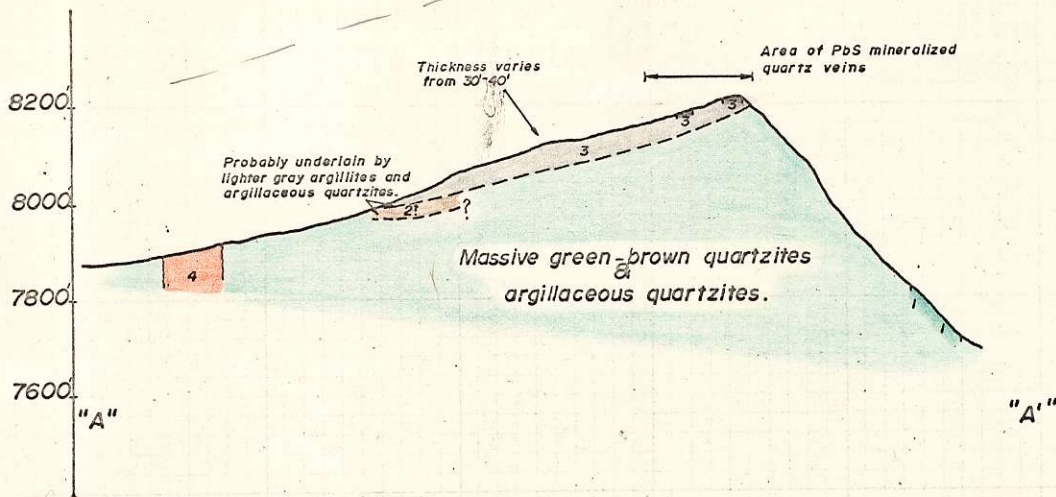
DOC MINERAL CLAIMS, B.C.  
SECTION A - A'

Looking East (approx.)

NORTH

SOUTH

Elevation (A.S.L.)



SECTION B-B'

NORTH

SOUTH

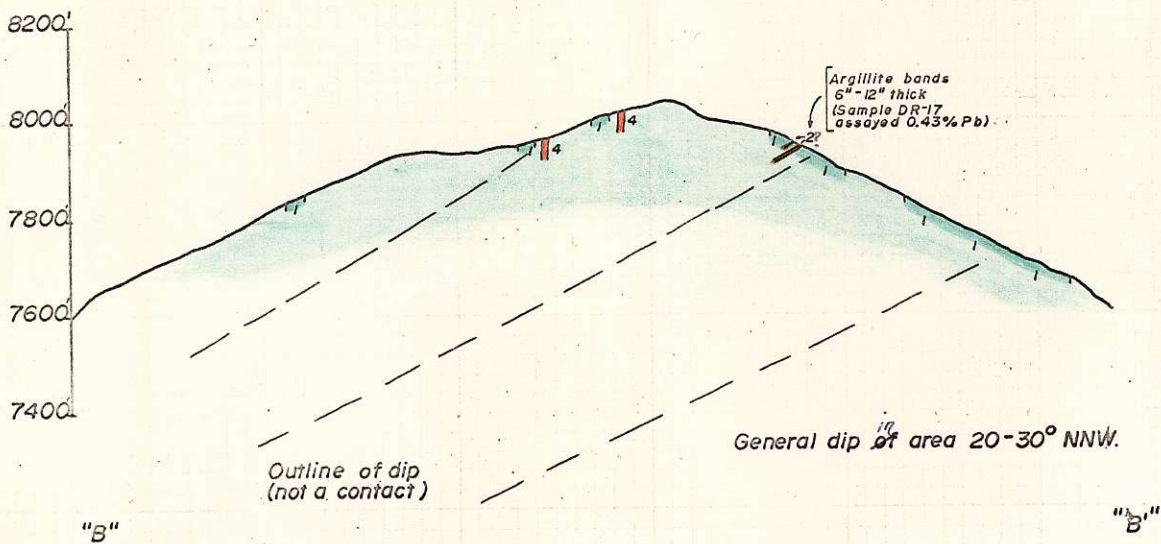
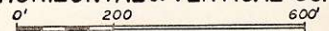


FIG. 73-2

HORIZONTAL & VERTICAL SCALE

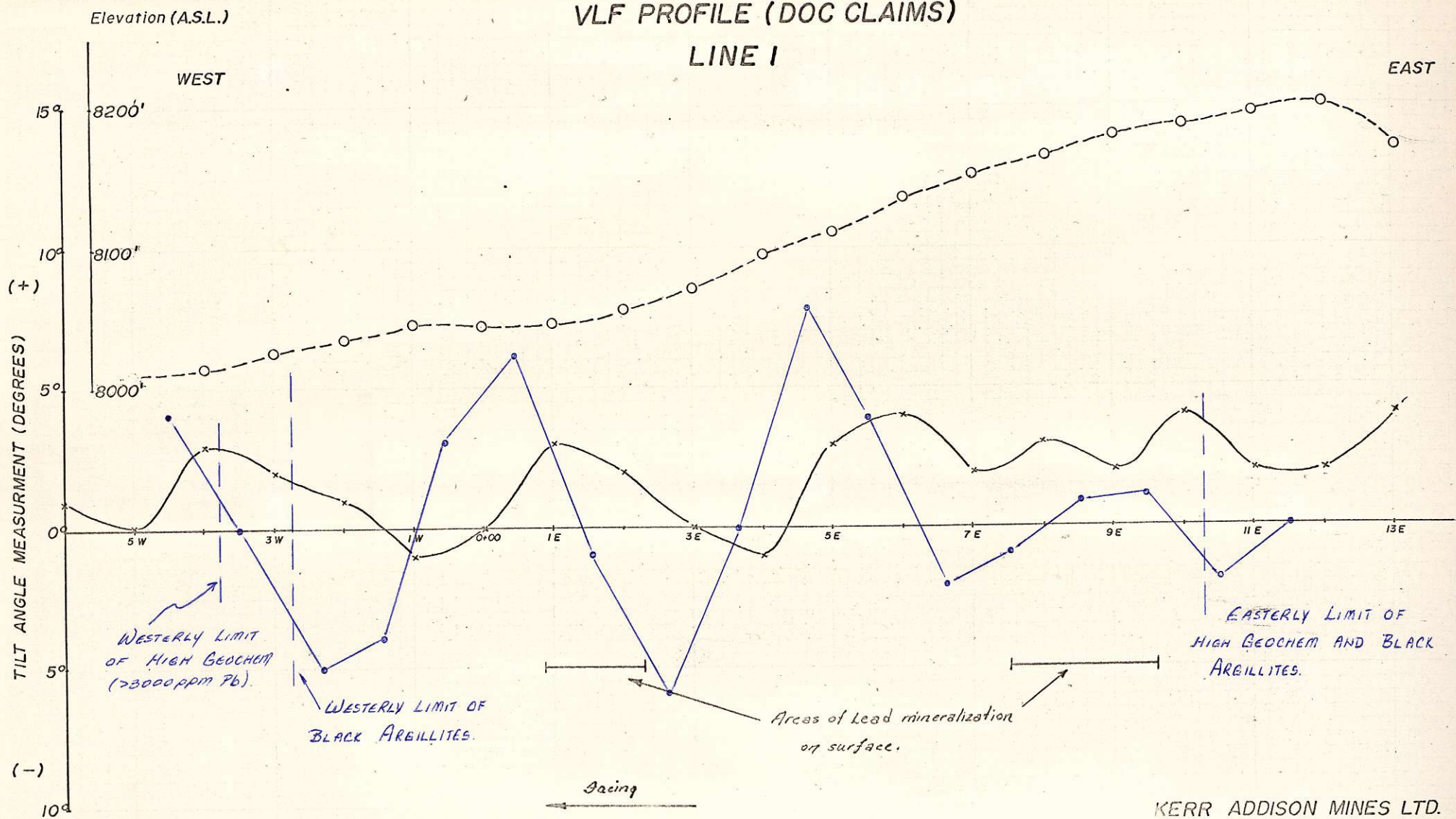


1" = 400 feet

To accompany GEOLOGICAL PLAN (Oct 73)

W.P.

# VLF PROFILE (DOC CLAIMS) LINE I



--o---o-- TOPOGRAPHY

-x---x- VLF READINGS

-o---o- PROCESSED DATA (AFTER FRASER)

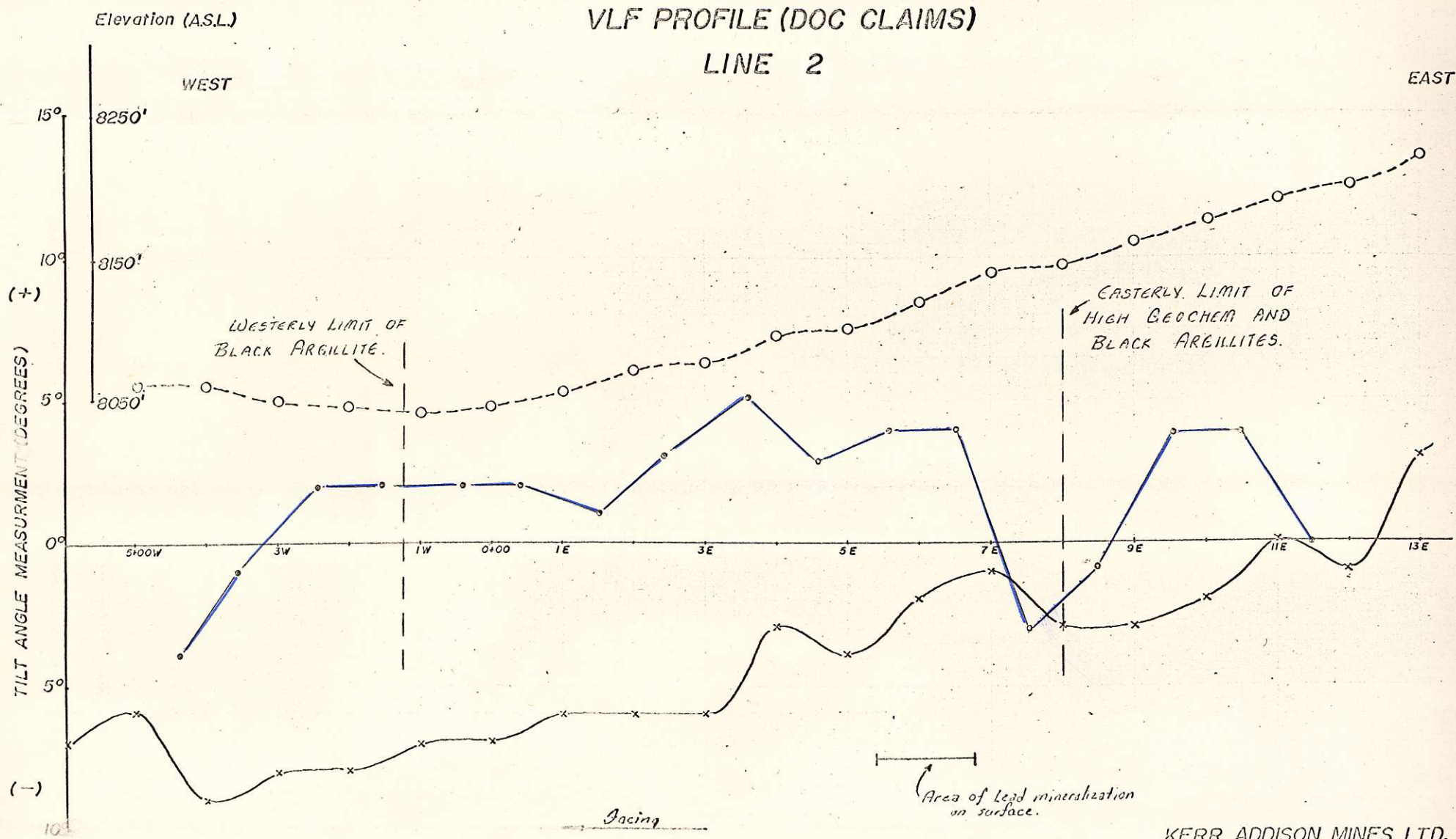
KERR ADDISON MINES LTD.

SCALE: 1" = 200' (horiz)  
1" = 5° (vertical)

INSTRUMENT: SCINTREX SE-80 RECEIVER  
USING 18.6 KHz.

(STATION USED: SEATTLE, WASH)

Figure D-73-3



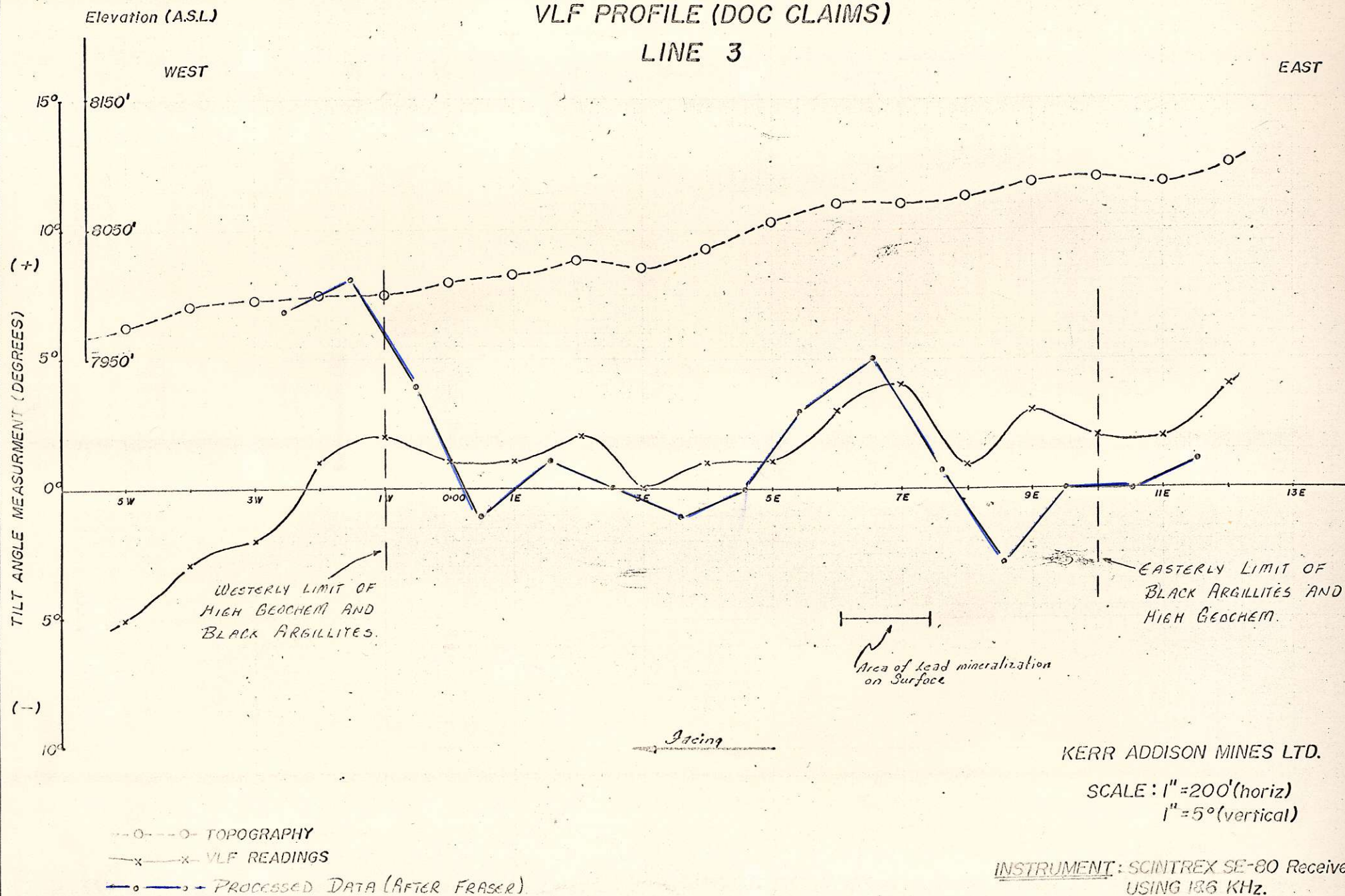
--o--o-- TOPOGRAPHY  
 -x-x- VLF READINGS  
 -o-o- PROCESSED DATA (AFTER FRASER)

KERR ADDISON MINES LTD.  
 SCALE: 1" = 200' (horiz)  
 1" = 5° (vertical)

INSTRUMENT: SCINTREX SE 80 RECEIVER  
 USING 18.6 KHz.  
 (STATION USED: SEATTLE, WASH.)



# VLF PROFILE (DOC CLAIMS) LINE 3



KERR ADDISON MINES LTD.

SCALE: 1" = 200' (horiz)  
1" = 5° (vertical)

INSTRUMENT: SCINTREX SE-80 Receiver  
USING 186 KHz.

(STATION USED: SEATTLE WASH)

Figure D-73-5

24/9/73