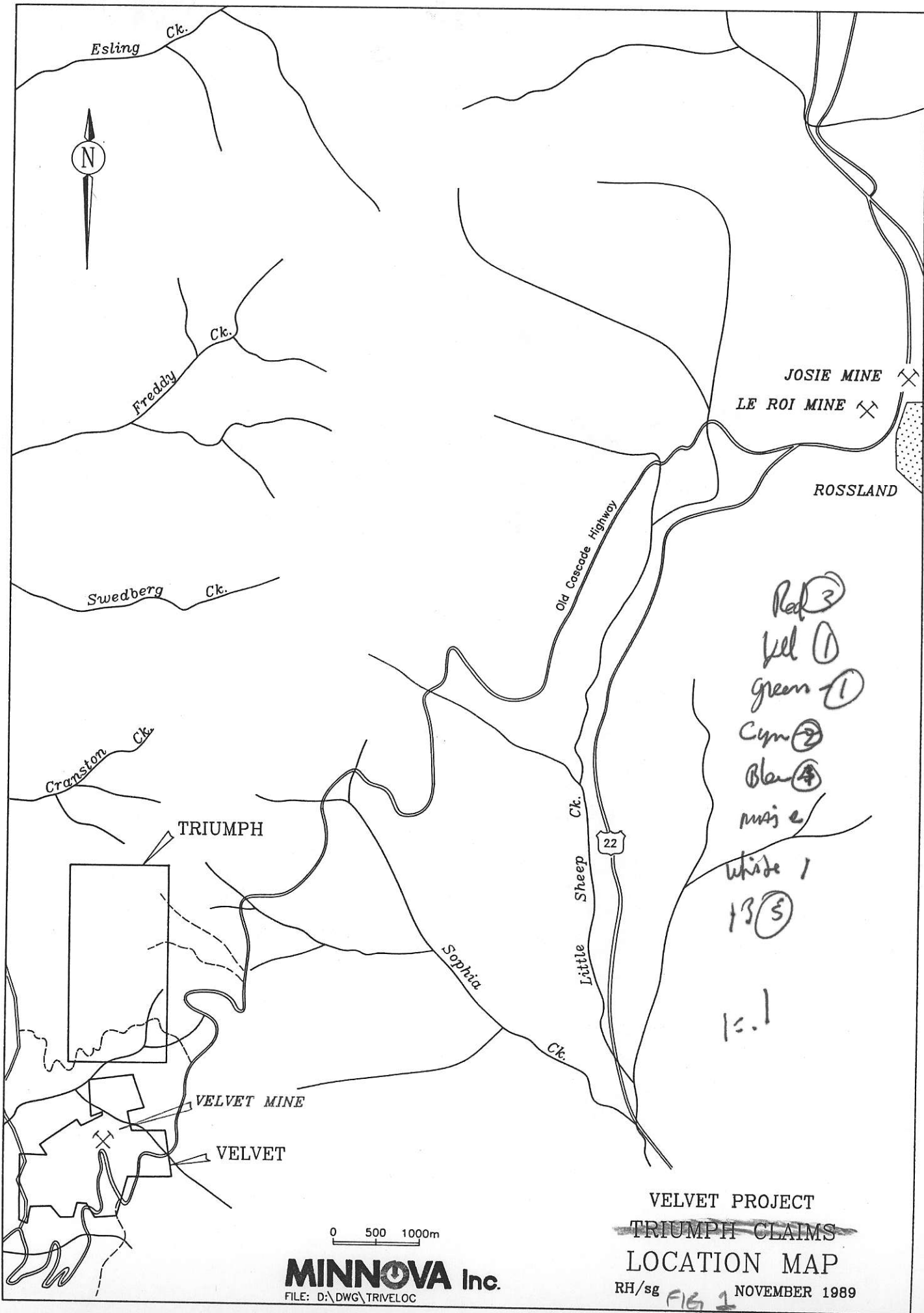


827869



Esling Ck.

Freddy Ck.

Swedberg Ck.

Cranston Ck.

TRIUMPH

Sophia Ck.

Old Cascade Highway

Little Sheep Ck.

22

JOSIE MINE
LE ROI MINE

ROSSLAND

VELVET MINE

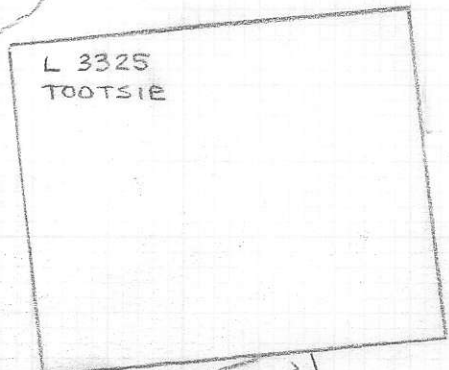
VELVET

Red (3)
 Yellow (1)
 Green (1)
 Cyan (2)
 Blue (4)
 magenta
 white 1
 13 (5)
 15.1

0 500 1000m

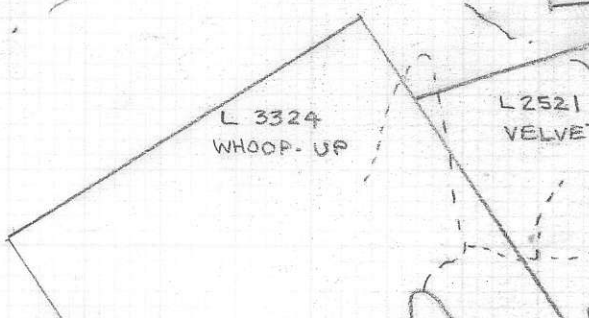
MINNOVA Inc.
 FILE: D:\DWG\TRIVELC

VELVET PROJECT
~~TRIUMPH CLAIMS~~
 LOCATION MAP
 RH/sg NOVEMBER 1989
 FIG 1

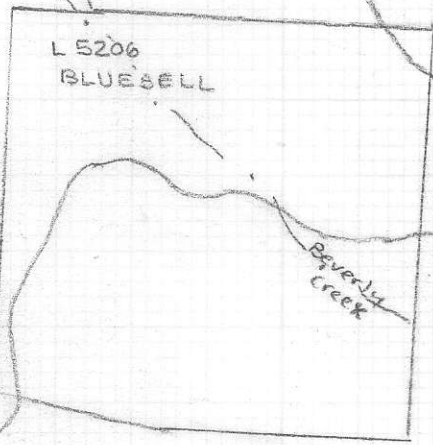


TO
ROSSLAND

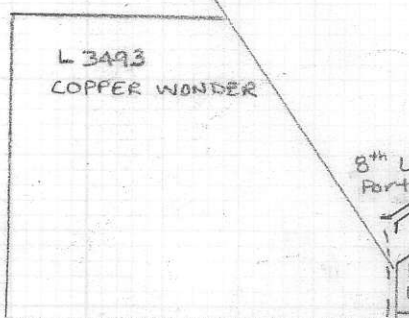
OLD CASCADE
HIGHWAY



4th Level
Portal



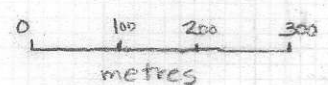
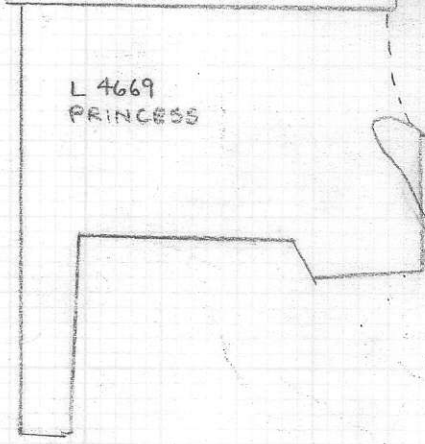
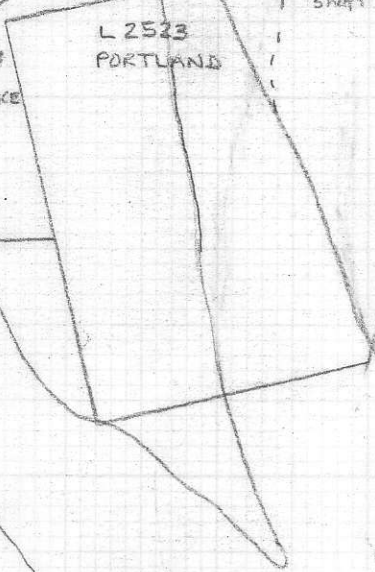
Beverly
Creek



8th Level
Portal

L 5205
VELVET FR.

Portland
shaft



VELVET PROPERTY
CLAIM MAP
FIG 2



TO ROSSLAND

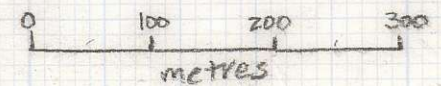
OLD CASCADE HIGHWAY

LEGEND

-  Coryell syenite
-  Monzonite
-  Elise mafic volcanics and serpentine
-  reported old workings
-  magnetic highs
-  rock sample location
-  diamond drill hole



VELVET PROPERTY
SURFACE COMPILATION



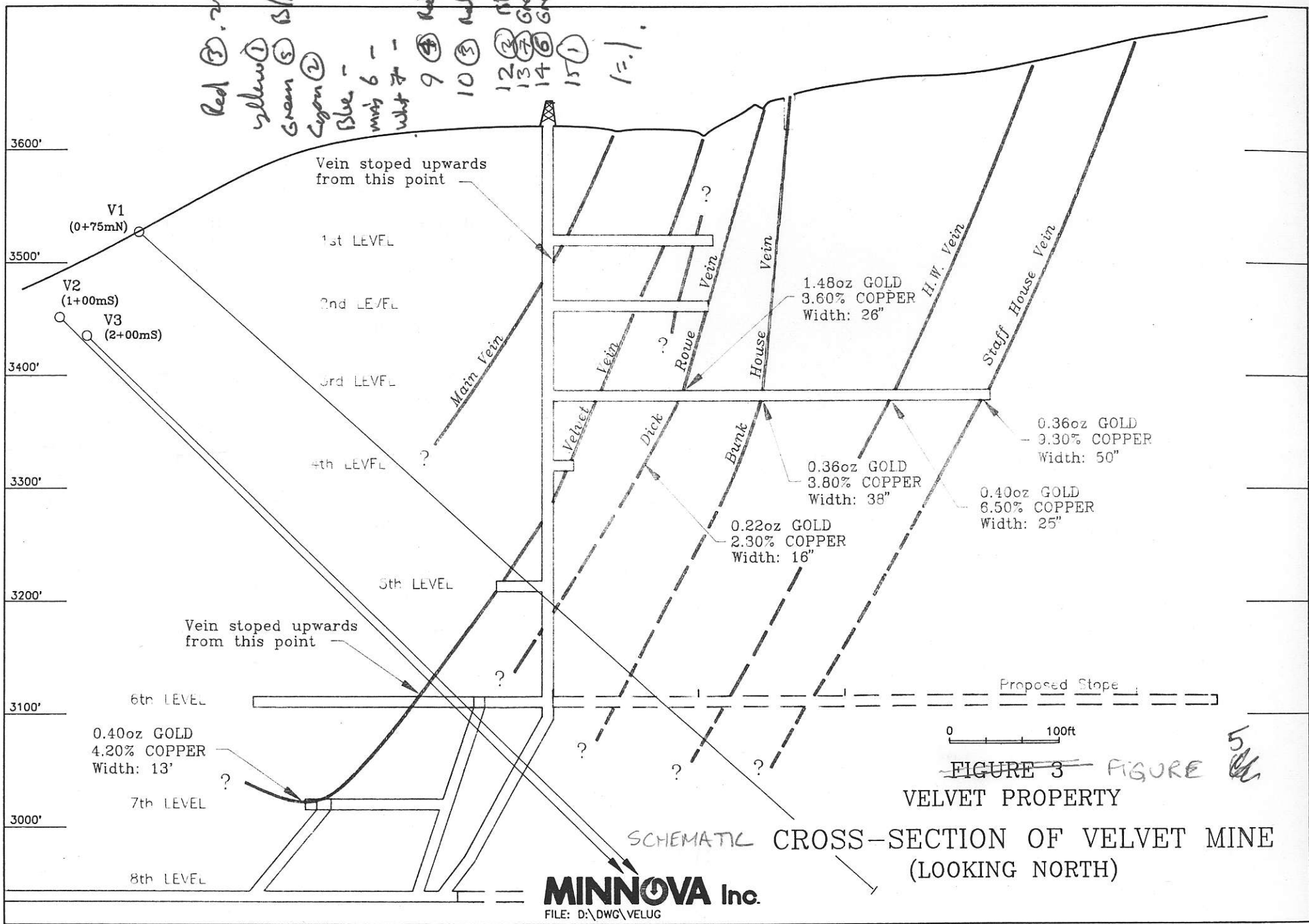
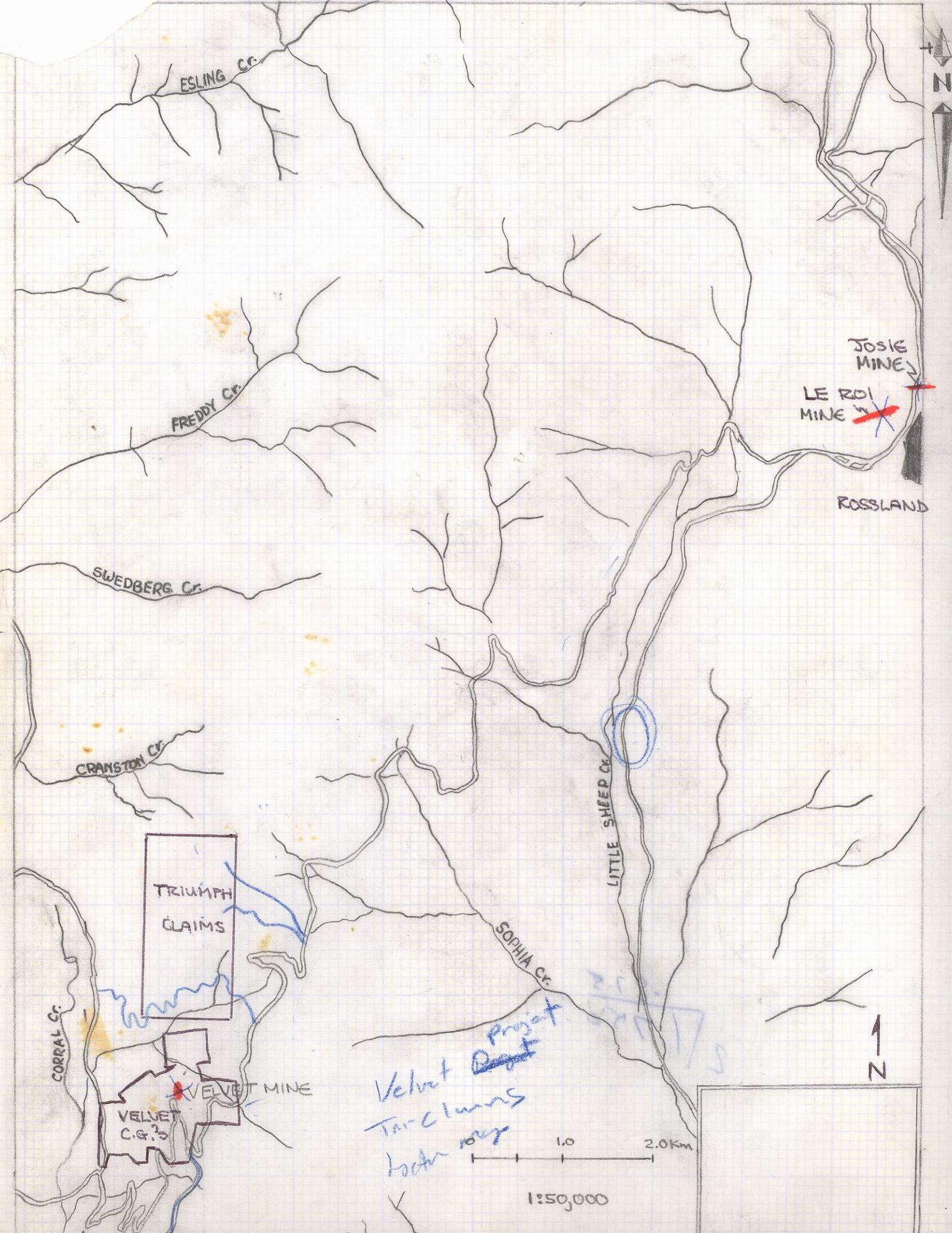


FIGURE 3 ~~FIGURE~~ 5
 VELVET PROPERTY
 SCHEMATIC CROSS-SECTION OF VELVET MINE
 (LOOKING NORTH)



ESLING Cr.

FREDDY Cr.

SWEDBERG Cr.

CRANSTON Cr.

CORRAL Cr.

LITTLE SHEEP Cr.

SOPHIA Cr.

JOSIE MINE

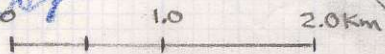
LE ROI MINE

ROSSLAND

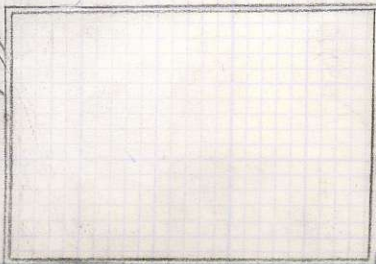
TRIUMPH CLAIMS

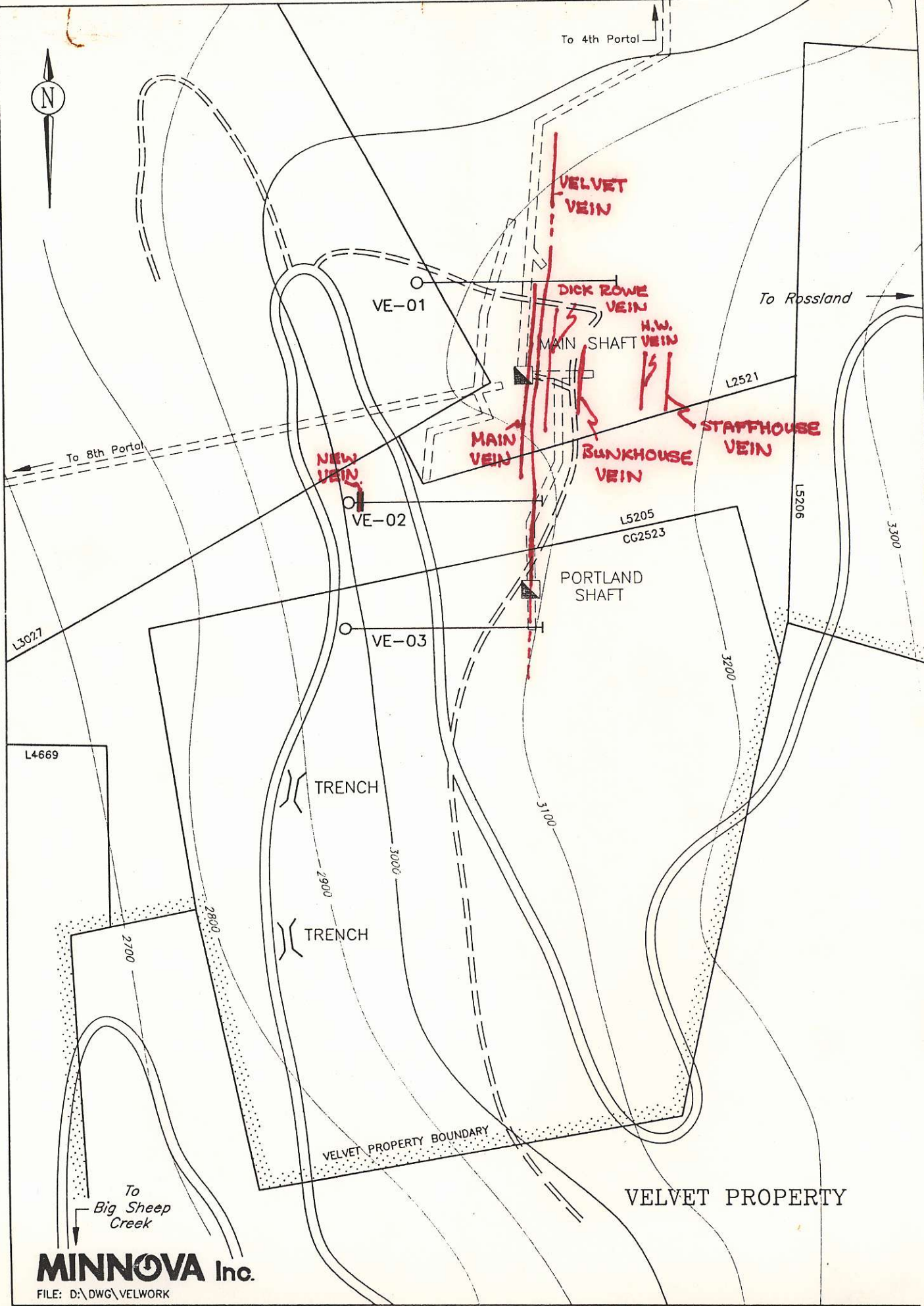
VELVET MINE
C.G. 3

*Velvet Project
Tail-claims
look very*



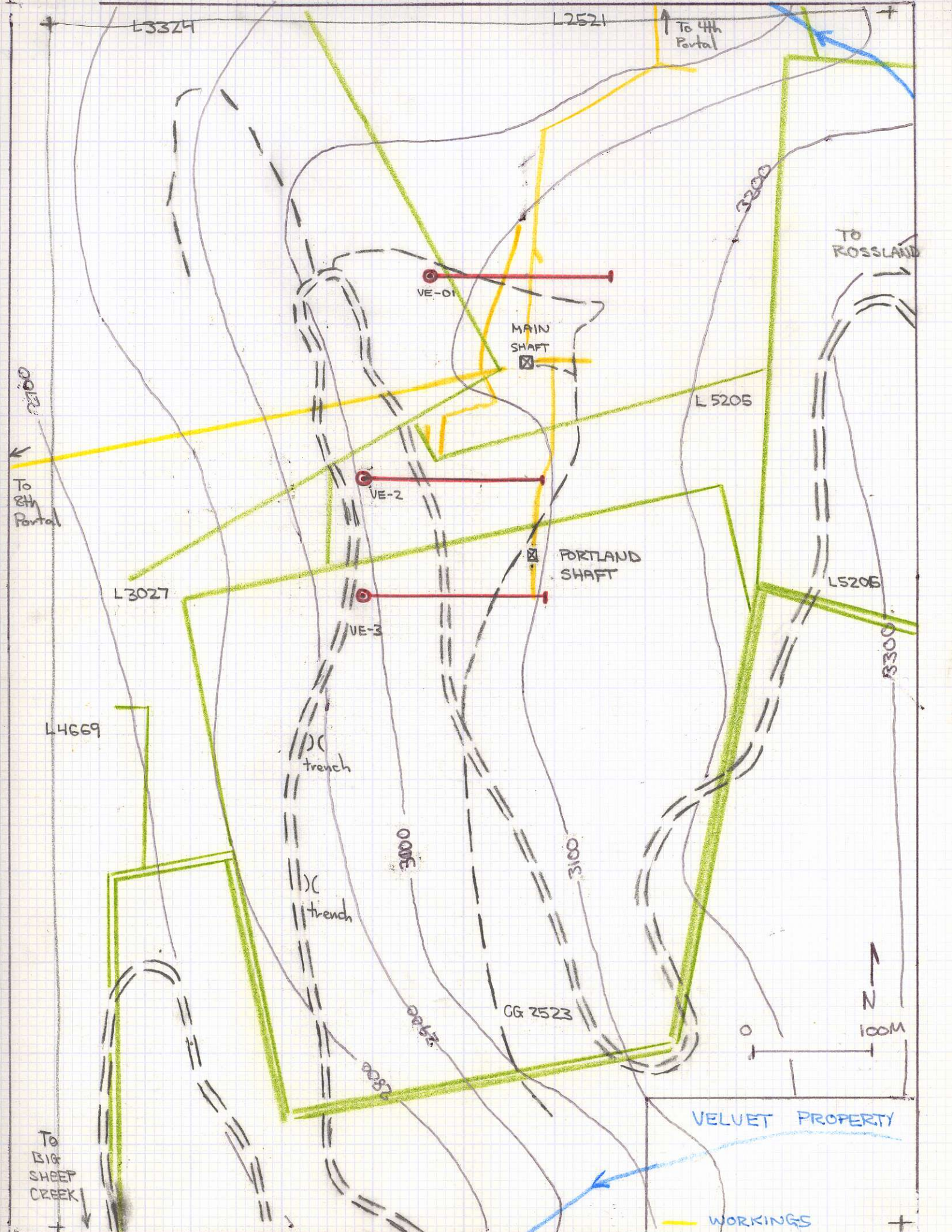
1:50,000

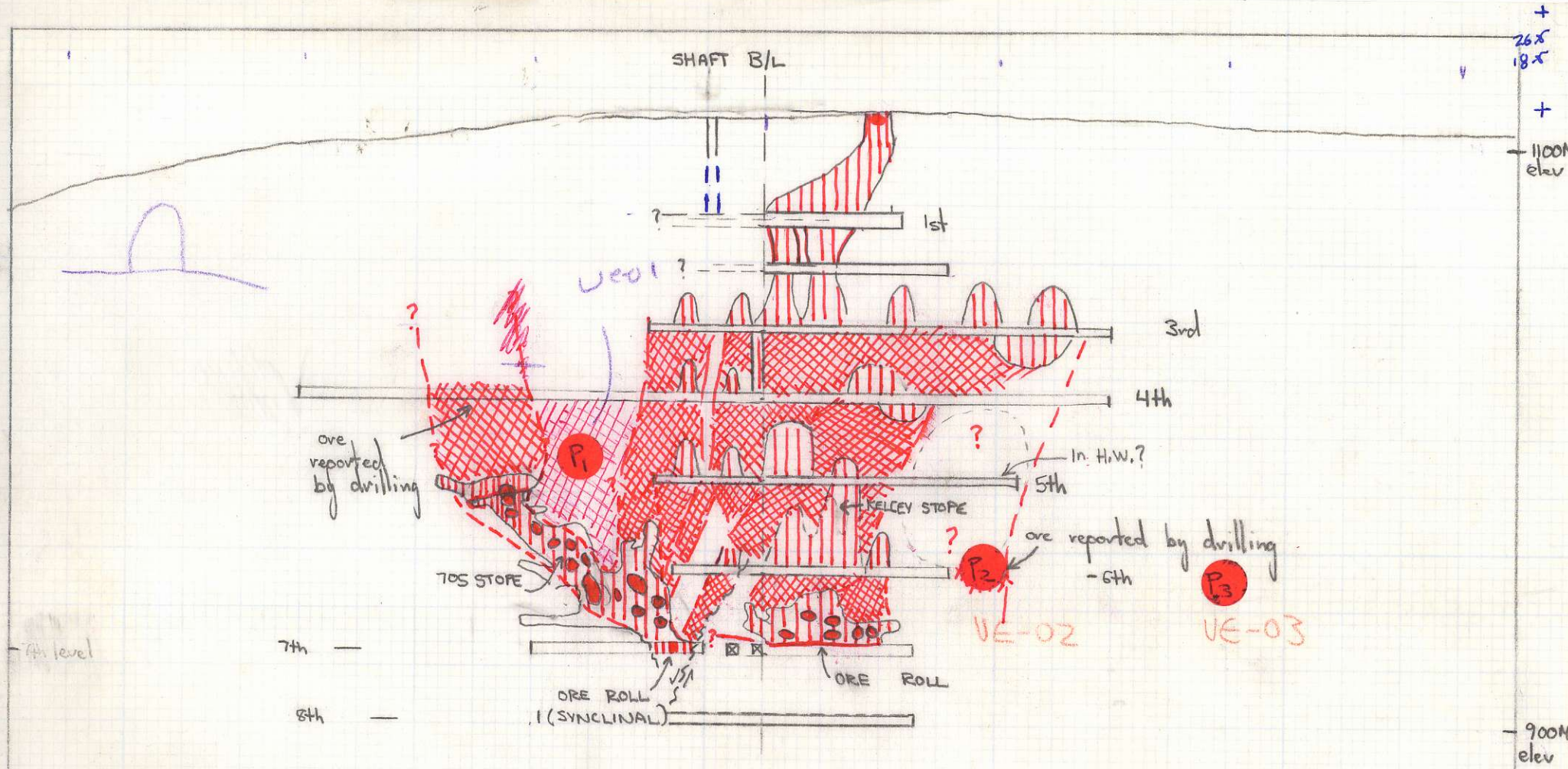




MINNOVA Inc.

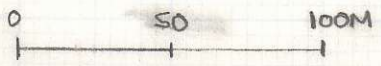
FILE: D:\DWG\VELWORK





- ORE
- ▨ ORE STOPED OUT
- ▩ POSSIBLE ORE
- P 1989 DRILL HOLE INTERSECTIONS

VELVET VEIN
LONG SECTION
1:2500



(LOOKING E) Avg 60° dip