

Velvet legend

827855



Lamprophyre Dyke



Syenite - ~~Manzanita~~ ^{Granodio.} Dyke

} related to Coryell



Vein w/ min/zn



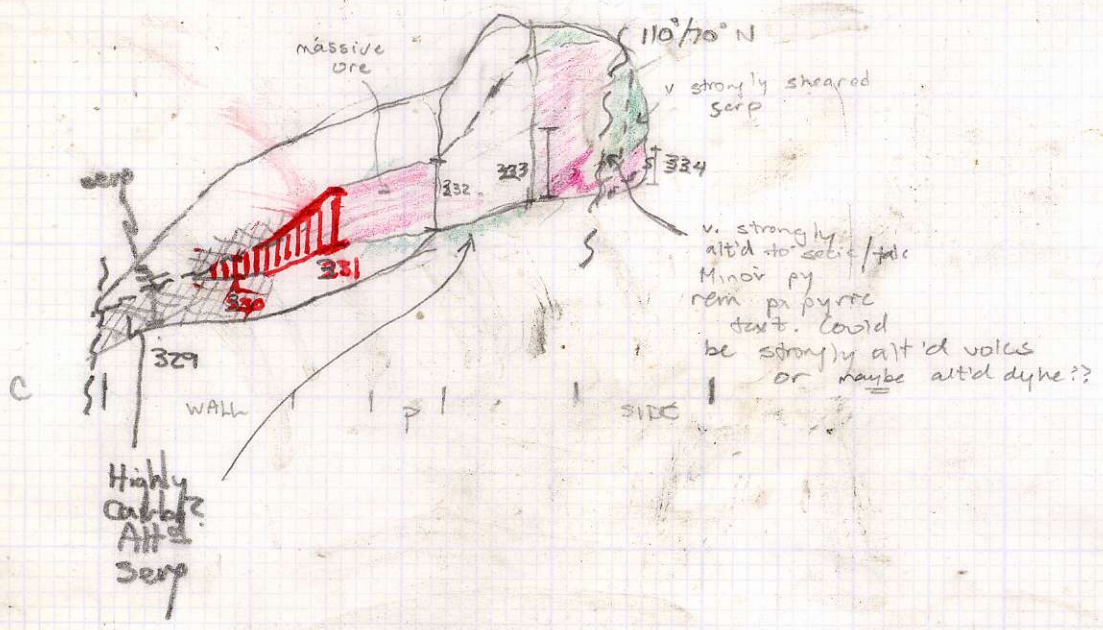
Dissem. Min/zn



Felsite Dyke.



E-E'

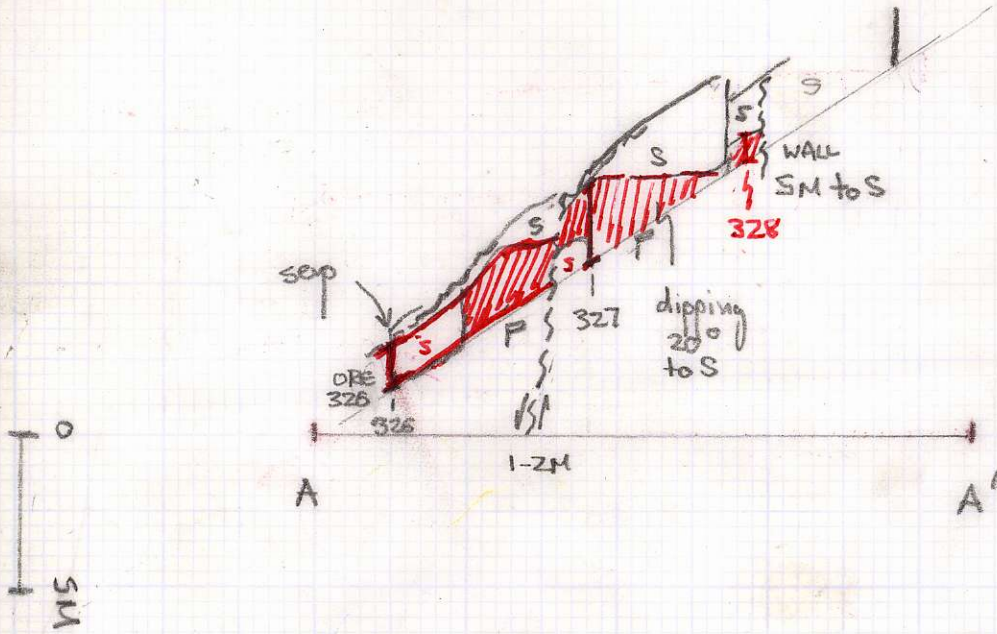


709 Sections

1:240

LOOKING N

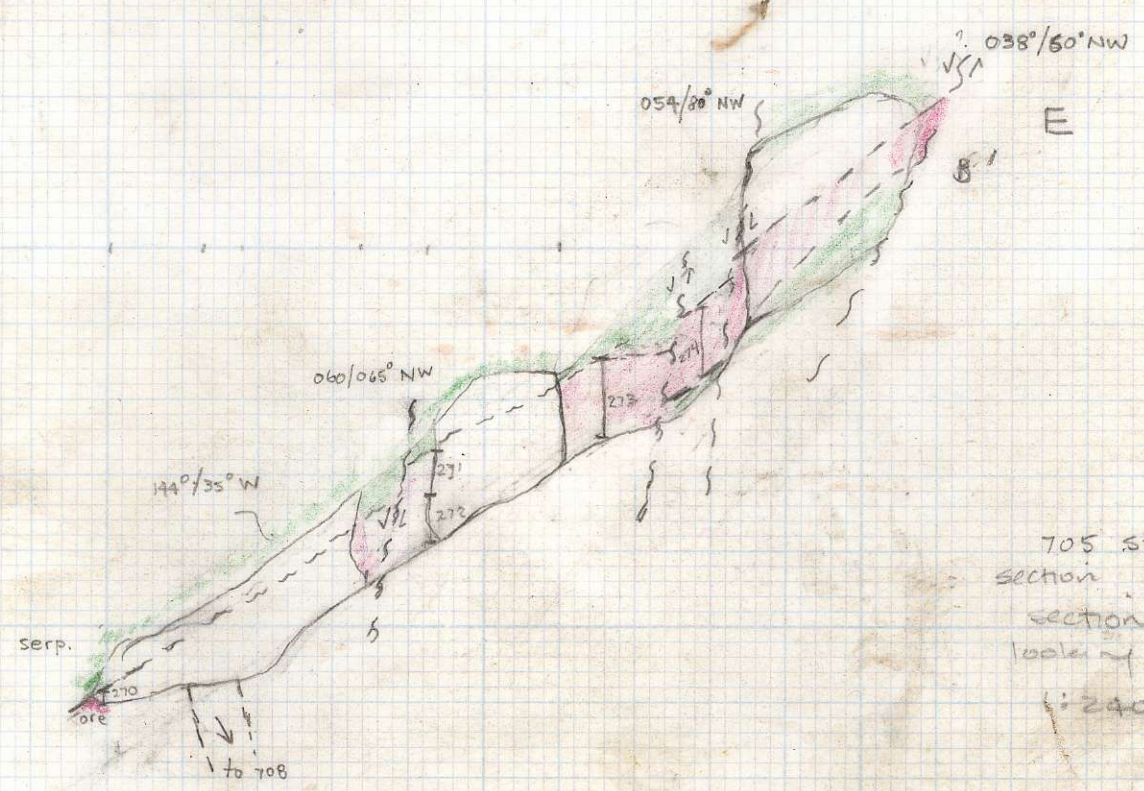
c-c'



W

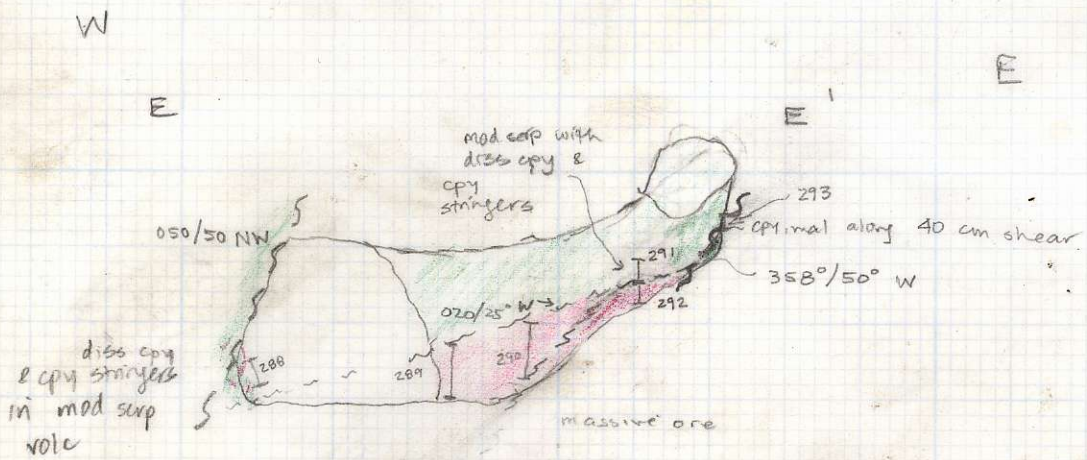
D-D'

W
B



705 slope
section B-B'
section
looking N
1:240

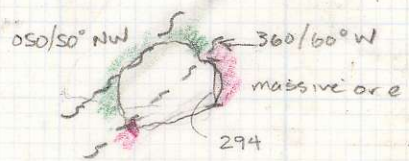
G-G'



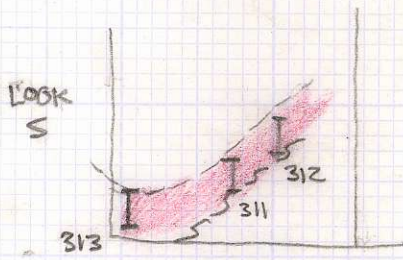
705 slope
1:240
E-E' section
looking N

W
F

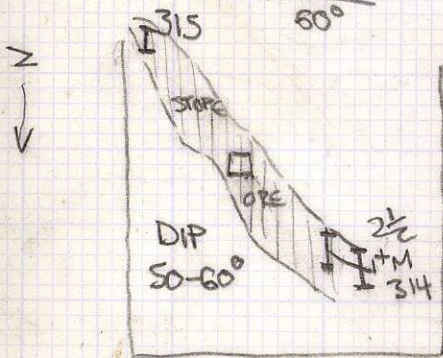
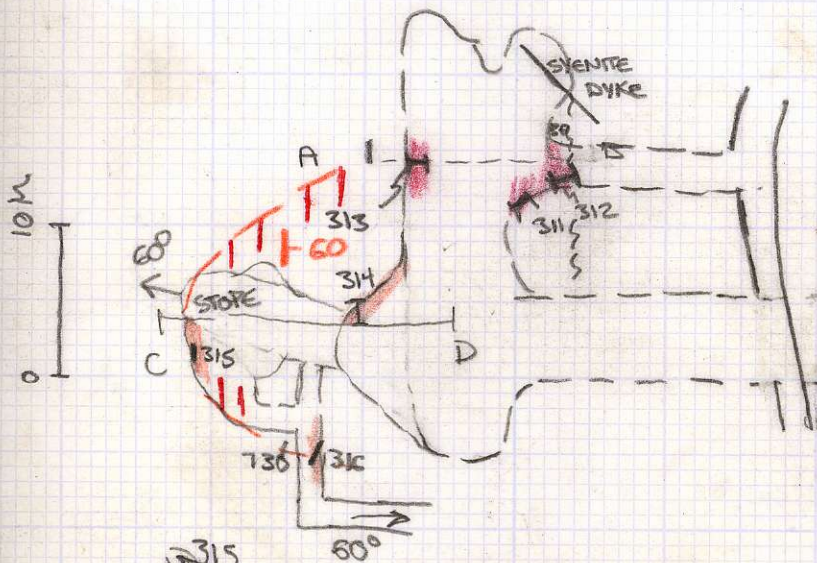
F' E



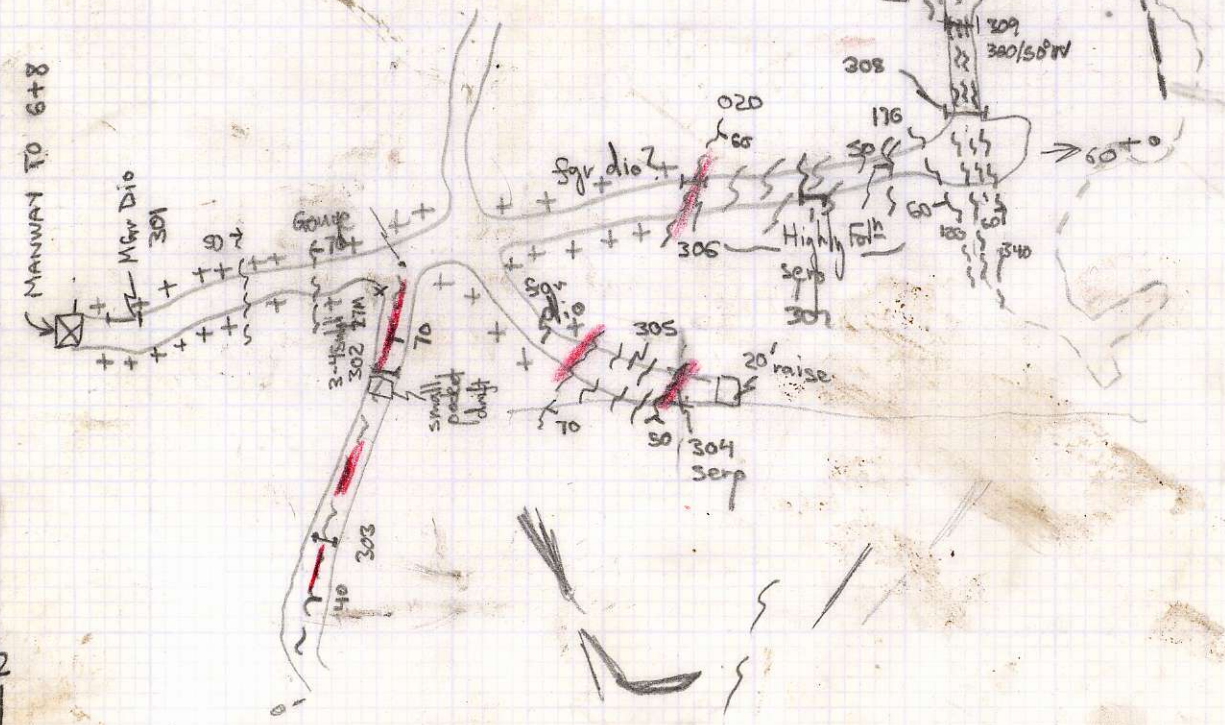
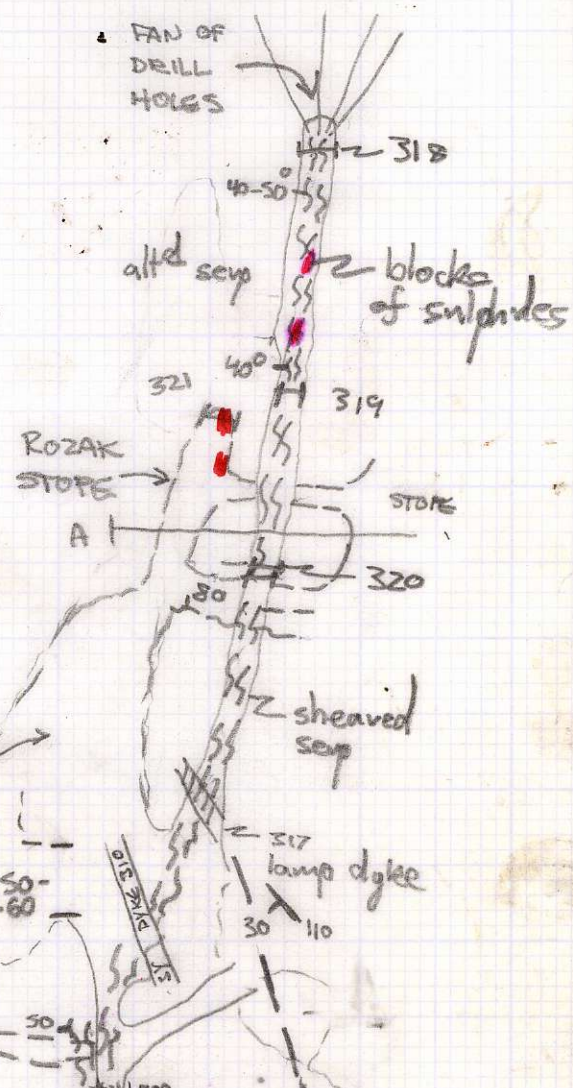
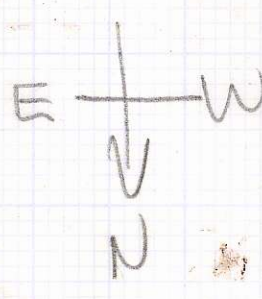
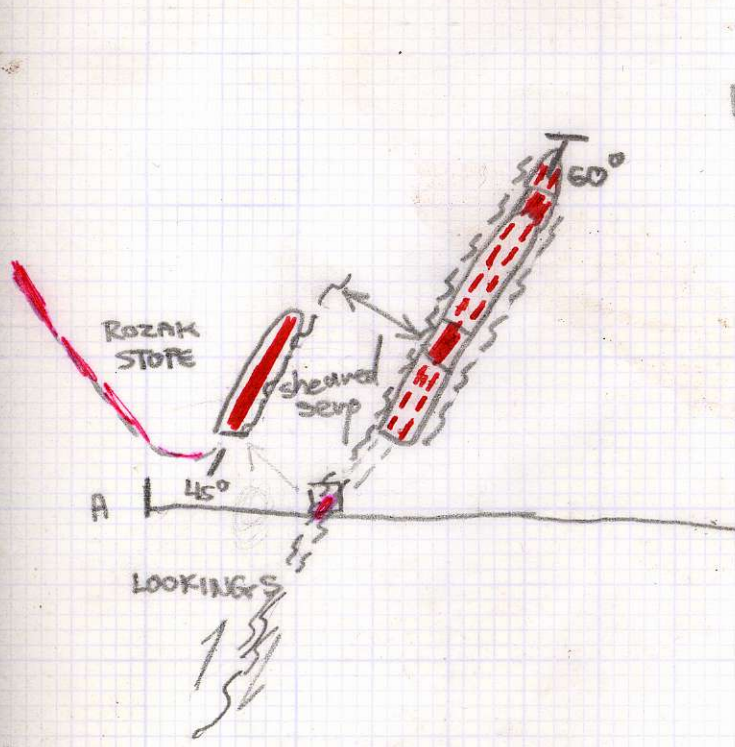
705 slope
1:240
F-F' section
looking N

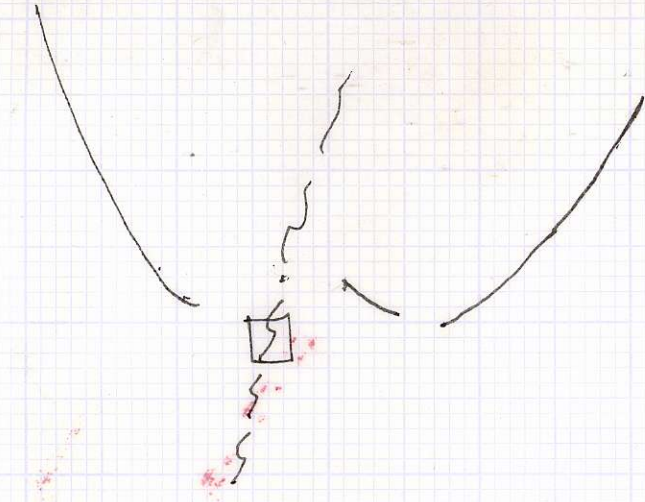


40' vertical

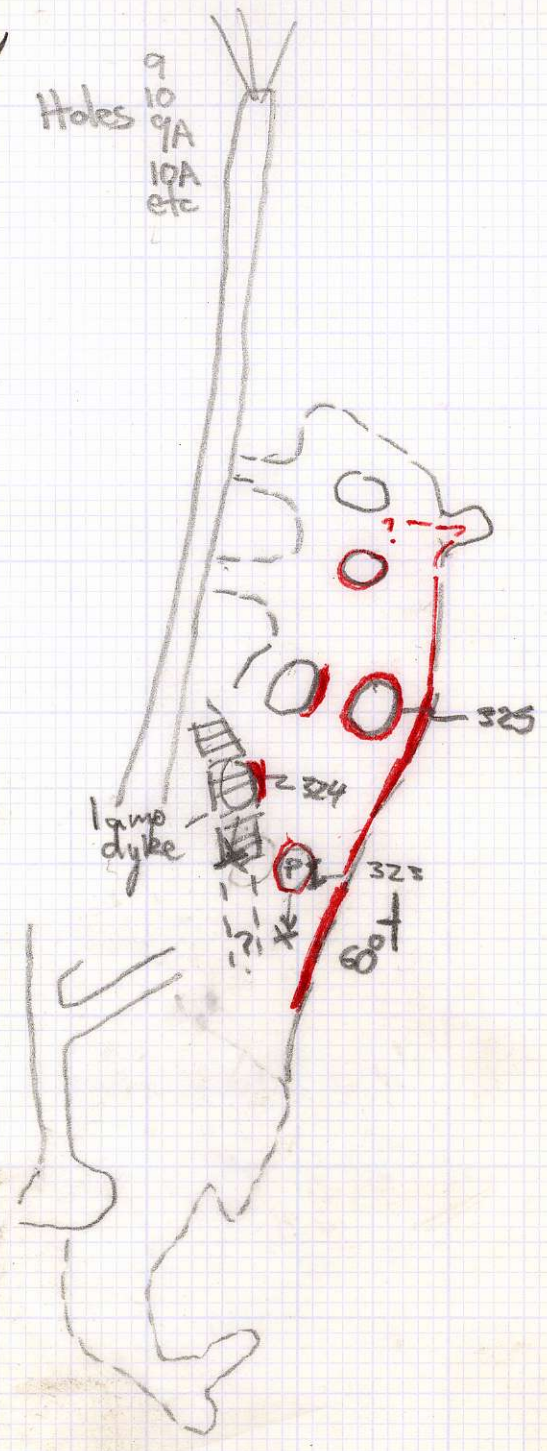
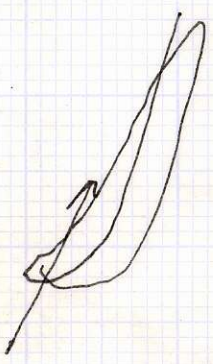


ROSAK STORE

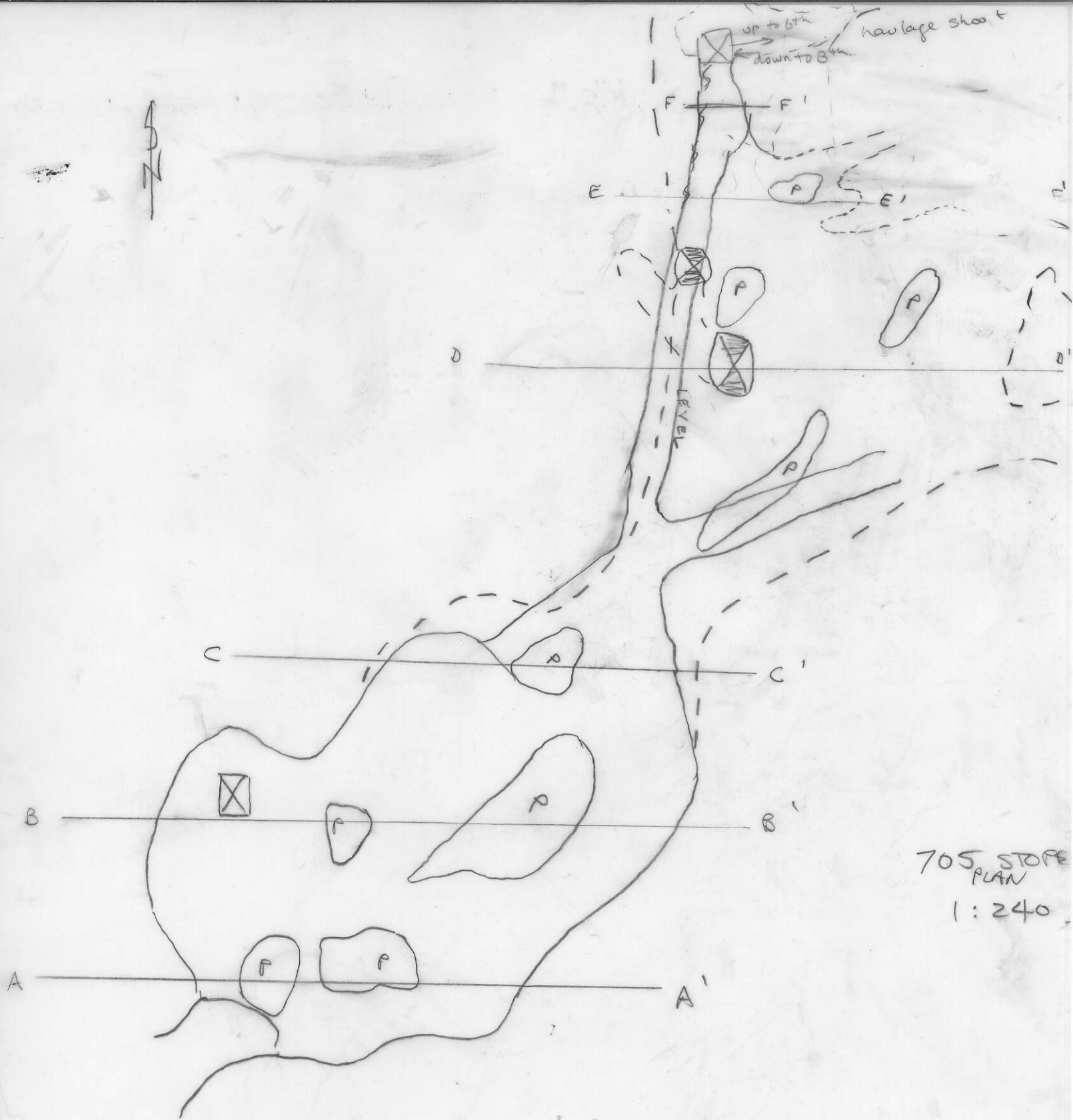
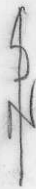




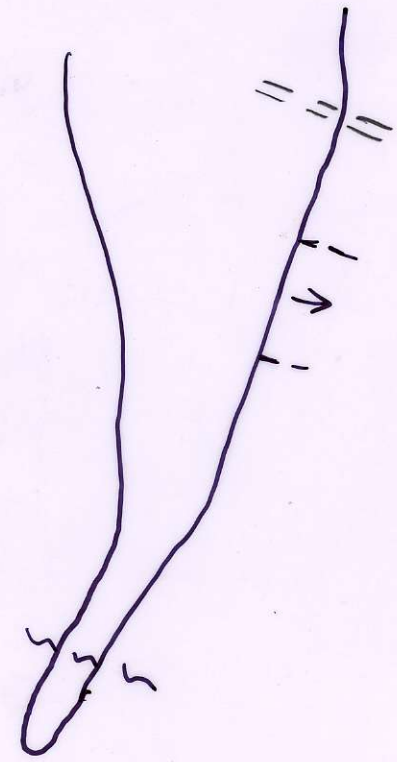
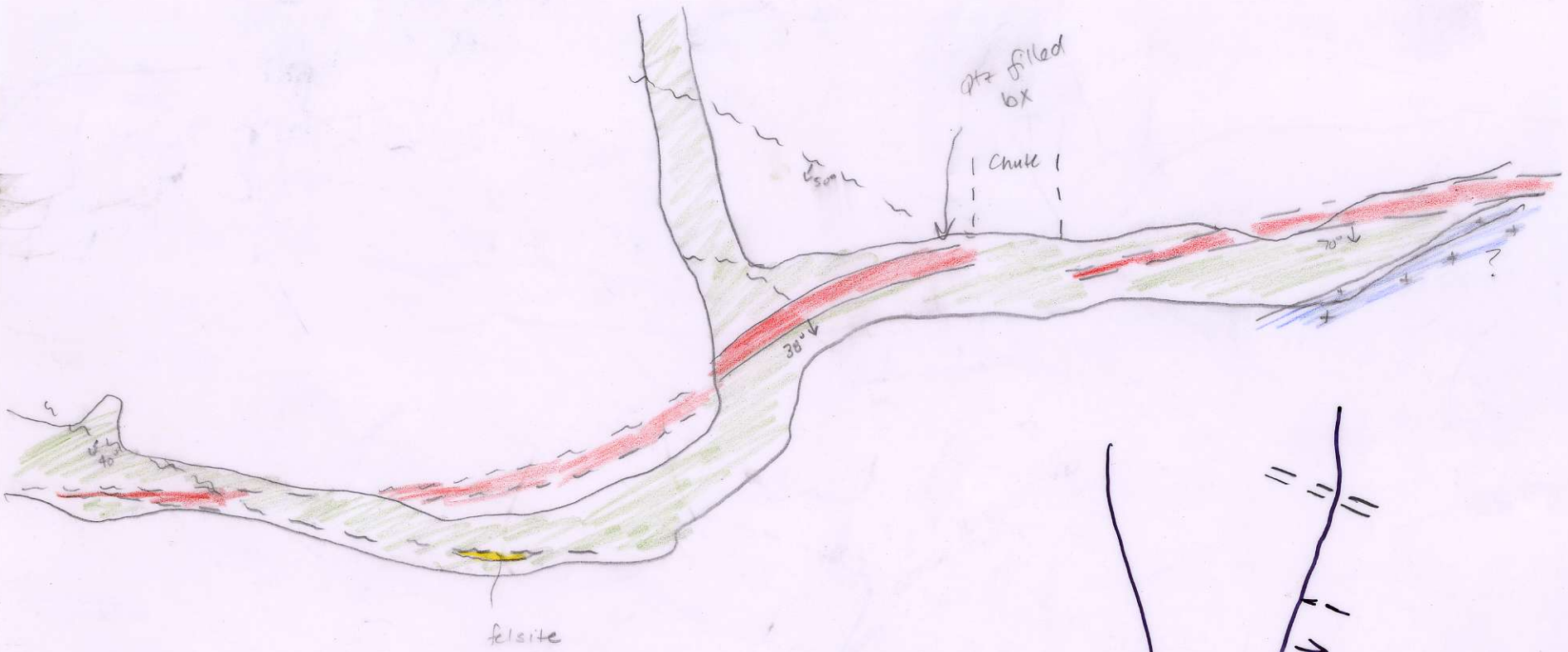
Holes
9
10
9A
10A
etc



11

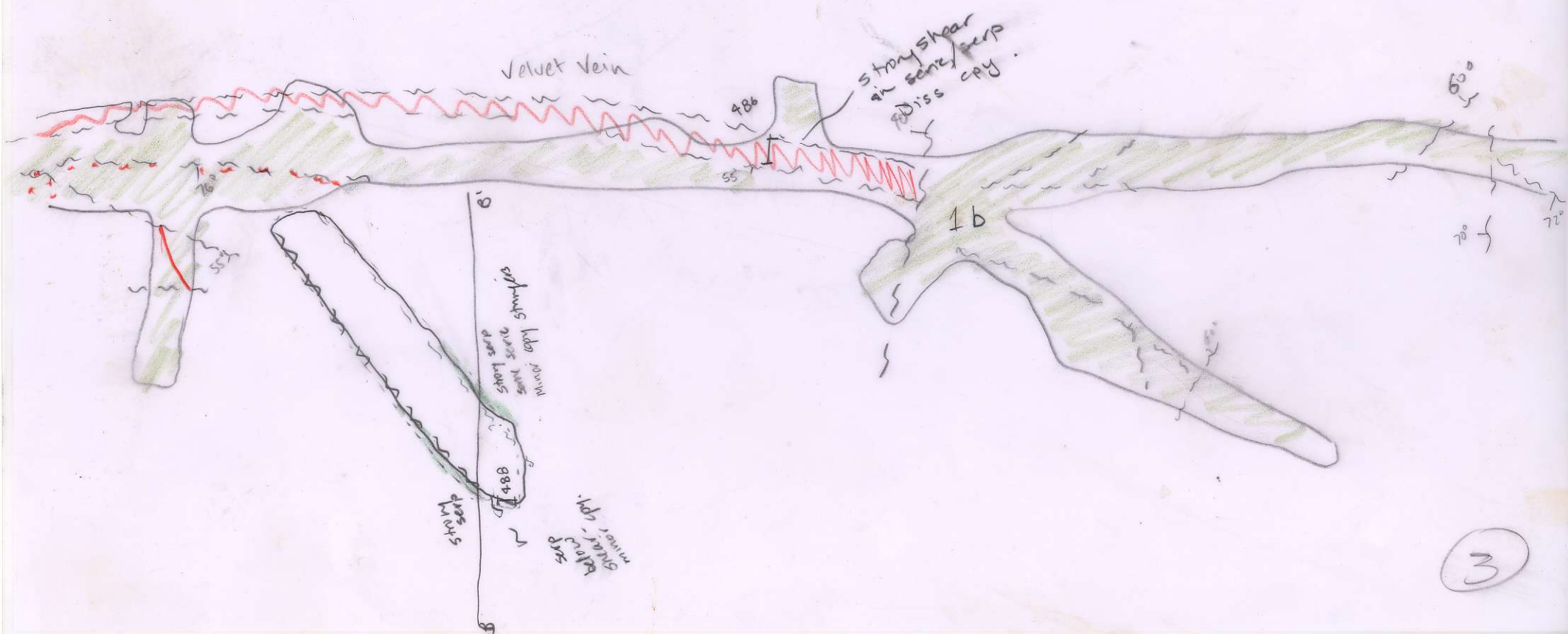
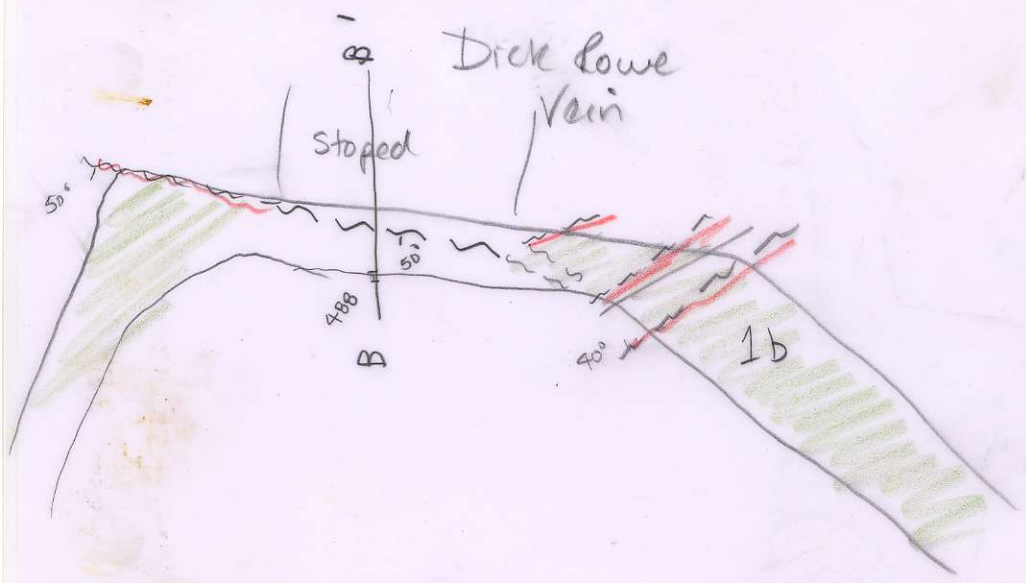


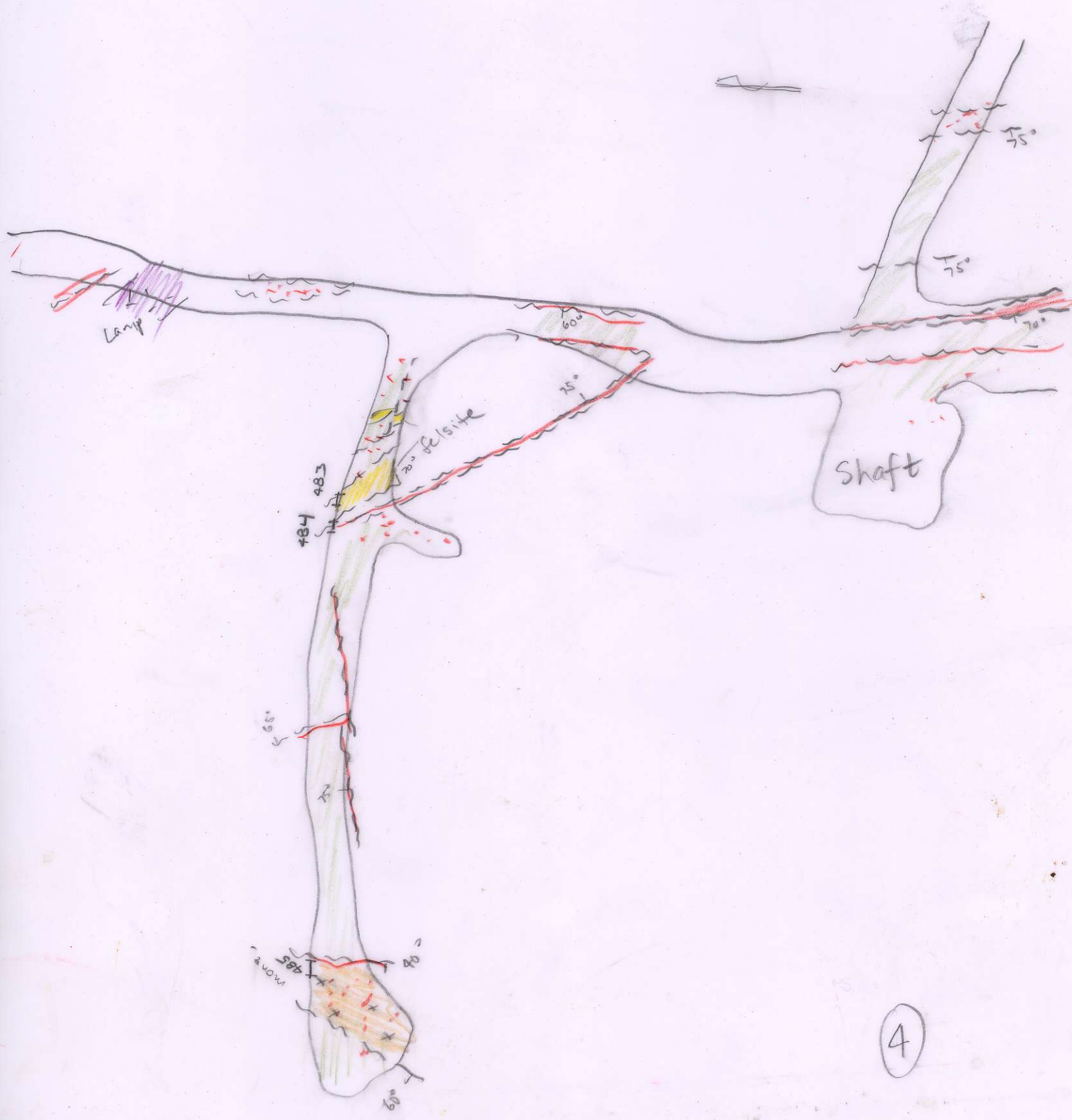
705 STONE
PLAN
1:240





②

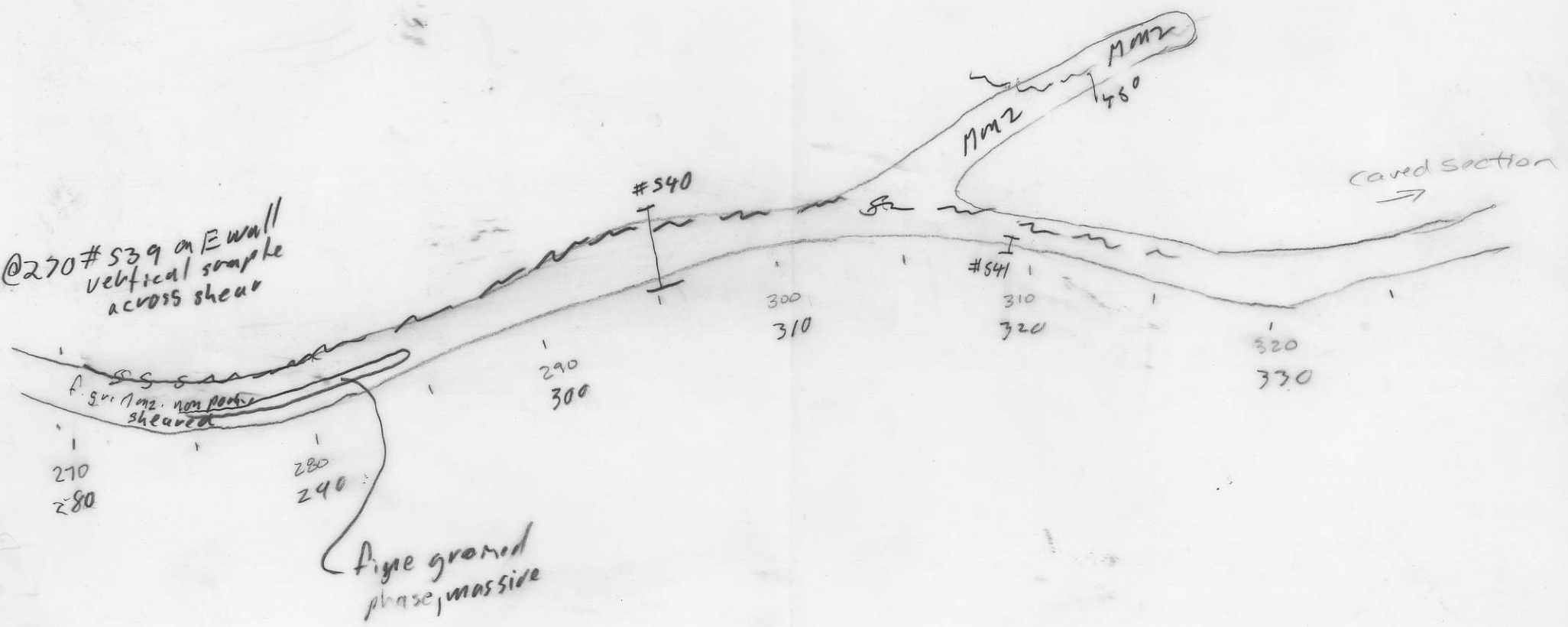




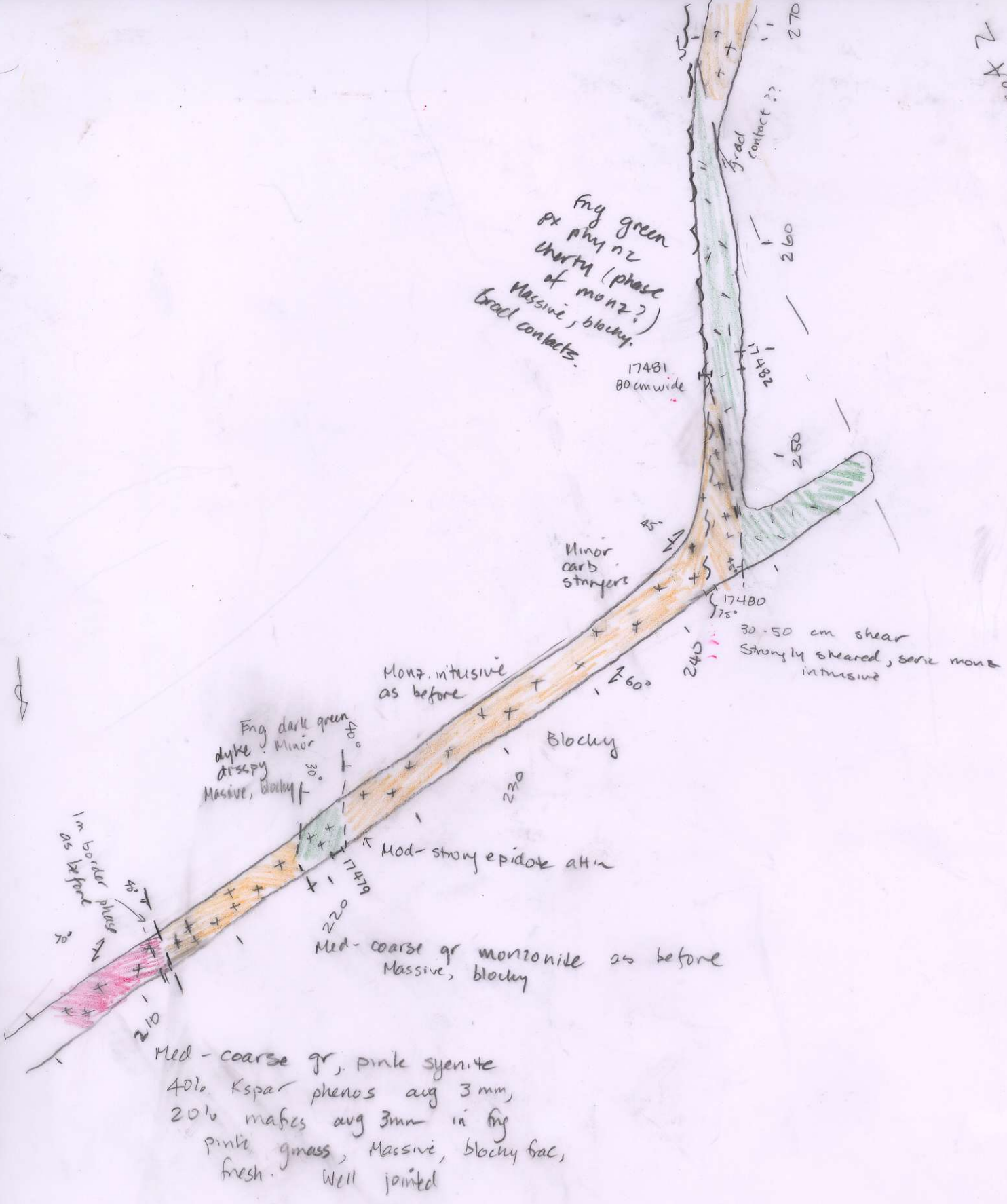
4



@270 #539 on E wall
vertical sample
across shear



2 X 200 S



4th level

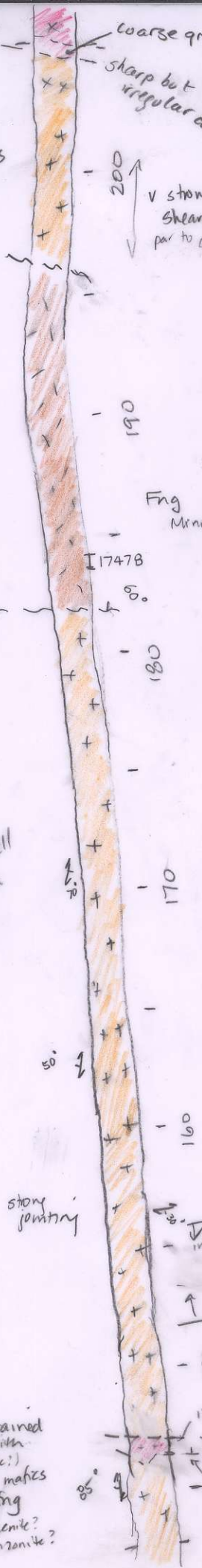
coarse grey ~~dyke~~ intrusive as 17477 at contact, border phase of syenite
sharp but irregular contact

Monz intrusive as before

200
v strong shearing par to contact

Fng dark brown lamprophyre
Minor diss py. Massive, blocky

Massive, well jointed fresh monz as before



stone jointing

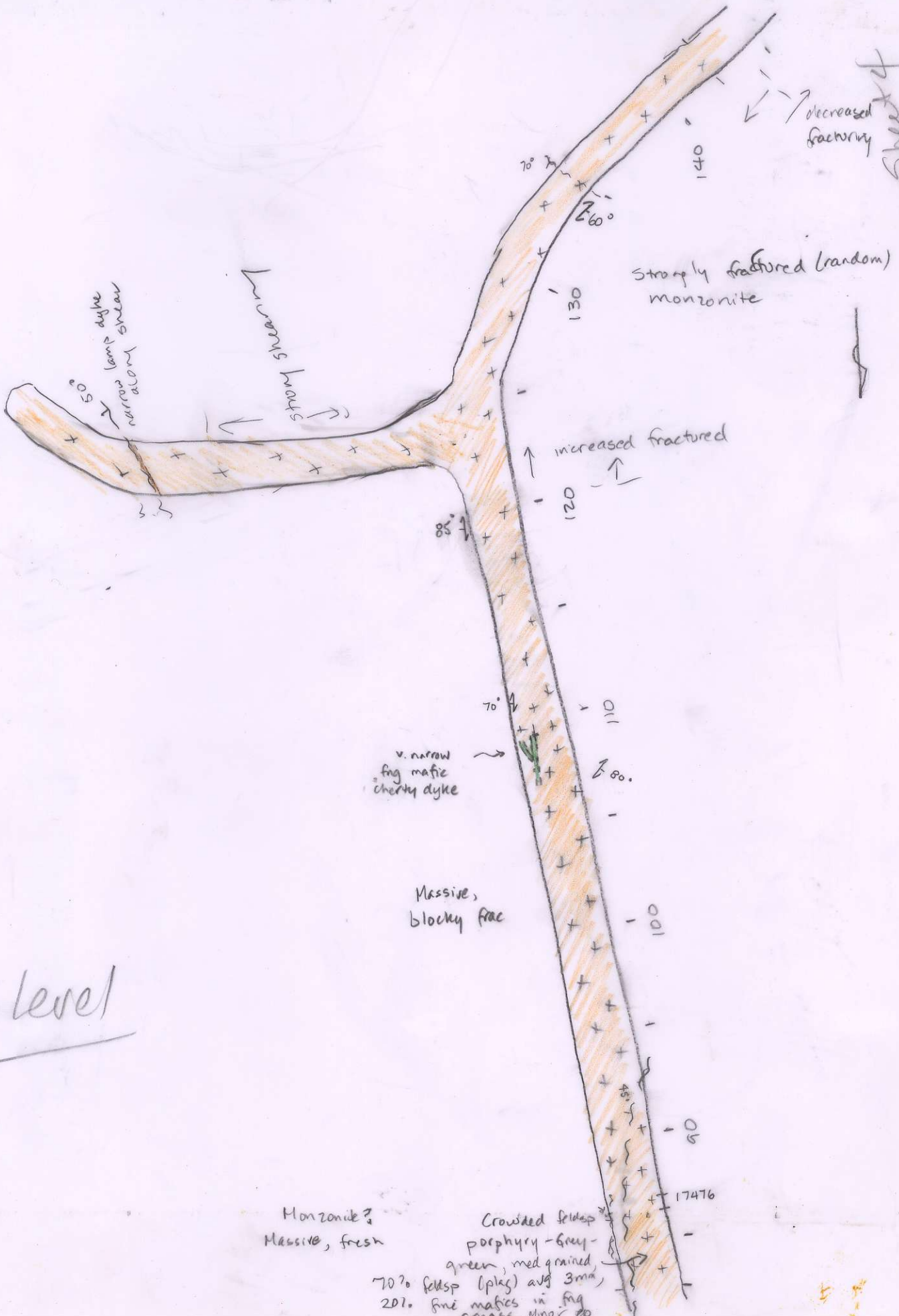
increased fract

Coarse grained grey dyke with 20% feldsp (analc?) to 5mm, 5% mafes avg 2mm in fng matrix -> syenite? monzonite?

17477
sharp but irreg. contact

4th level

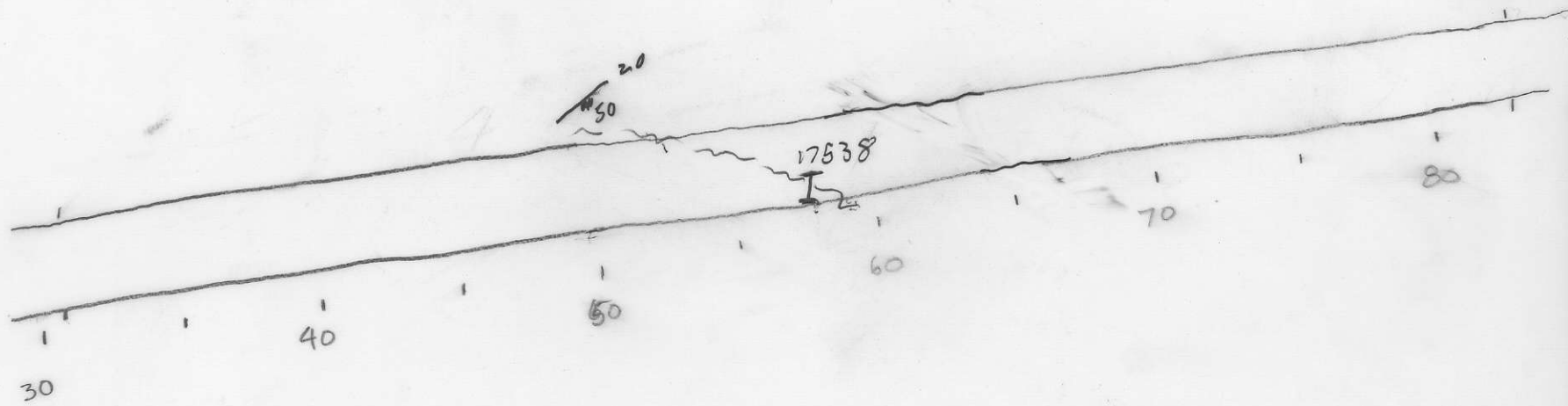
Sheet 4



4th level

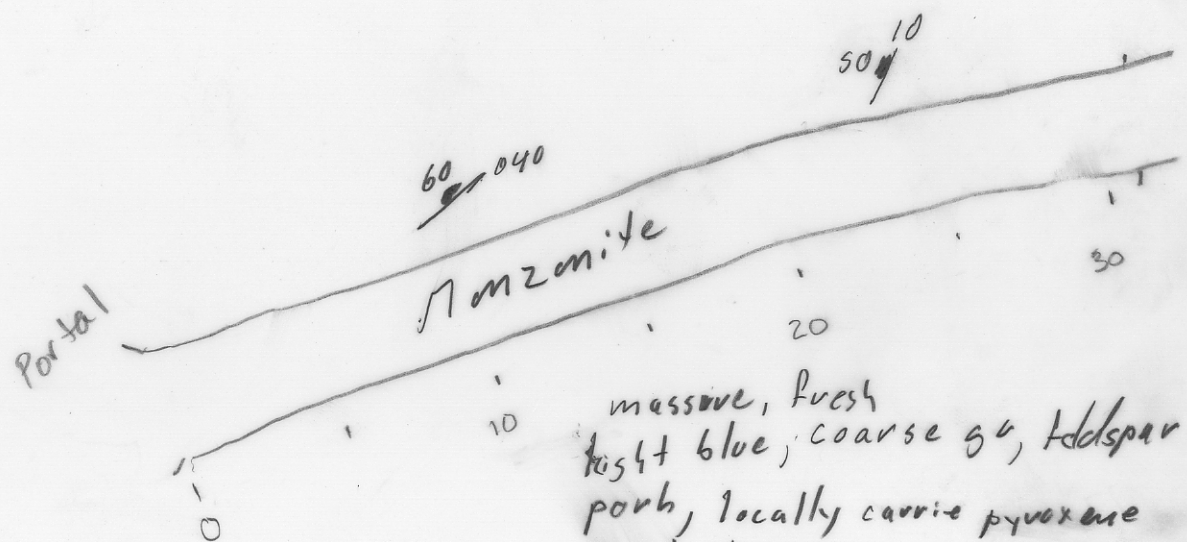
Monzonite?
Massive, fresh

Crowded feldsp
porphyry - Grey-green, med grained
70% feldsp (plag) avg 3mm
20% fine mafics in fine mass. minor ep



4th level

Sheet 5



4th level

massive, fresh
light blue, coarse gr, feldspar
poor, locally carries pyroxene
porphy to 2mm

Sheet 6