



## LARA HALD STUDY, PHASE I, 1986

## DIAMOND DRILL HOLE 86-94

SAMPLE #	STRAT LOC.	FROM METERS	TO FIELD METERS	ROCK CODE	PPM										%										ALTN INDX	MG/NA RATIO
					CU	PB	ZN	AG	BA	AS	S	SI02	AL2O3	TI02	FE2O3	MGO	CAO	NA2O	K2O	MNO						
DL94-53	FW	134.09	136.09	RHYL	R	8	4	22	0.1	1266	10.0	1613	69.74	17.27	0.26	2.41	1.33	2.24	2.56	4.09	0.04	53.03	0.52			
DL94-54	FW	136.09	138.80	RHYL	R	22	12	31	0.1	1441	23.0	2227	68.40	18.69	0.26	2.18	1.25	2.49	1.36	4.65	0.05	60.51	0.92			
DL94-55	FW	138.80	140.42	MDST	S	152	2	74	0.1	466	130.0	3030	52.76	16.22	2.01	10.77	3.58	8.07	0.86	3.80	0.14	45.25	4.16			
DL95-56	FW	140.42	142.42	RHYL	R	22	4	34	0.1	1082	9.0	2304	69.22	18.20	0.21	2.58	1.48	1.67	2.29	4.13	0.05	58.62	0.65			
DL95-57	FW	142.42	144.42	RHYL	R	20	8	40	0.1	891	7.0	1793	69.51	18.00	0.21	2.50	1.57	1.83	1.19	4.60	0.05	67.14	1.32			
DL94-58	FW	144.42	147.96	RHYL	R	19	4	38	0.1	1163	3.0	795	69.92	17.84	0.23	2.55	1.77	1.80	0.51	5.10	0.05	74.84	3.47			
DL94-59	FW	147.96	149.71	RHYL	R	14	20	40	1.0	1019	7.0	1696	68.54	18.43	0.25	2.69	1.95	1.72	0.68	5.21	0.05	74.90	2.87			
DL94-60	FW	149.71	151.71	RHYL	R	6	4	43	0.1	1381	5.0	1704	61.12	21.40	0.25	3.32	2.38	2.34	0.98	6.58	0.06	72.96	2.43			
DL94-61	FW	151.71	153.71	RHYL	R	14	6	48	0.1	714	5.0	2493	68.76	17.20	0.18	2.98	1.91	2.55	1.76	4.27	0.07	58.91	1.09			
DL94-62	FW	153.71	155.71	RHYL	R	17	10	39	0.1	795	8.0	1783	69.15	18.08	0.26	2.69	1.52	1.89	1.35	4.80	0.05	66.11	1.13			
DL94-63	FW	155.71	157.71	RHYL	R	9	4	43	1.0	820	2.0	1643	69.50	17.04	0.26	2.95	1.77	2.60	1.04	4.64	0.06	63.78	1.70			
DL94-64	FW	157.71	159.08	RHYL	R	18	8	38	1.0	2905	273.0	2784	66.74	18.86	0.26	2.67	1.60	1.91	0.12	5.10	0.05	76.75	13.33			
DL94-65	FW	159.08	160.22	RHYL	R	17	4	24	0.1	1005	650.0	4138	66.59	20.35	0.21	2.67	1.50	1.64	0.53	4.69	0.05	73.60	2.59			
DL94-66	FW	160.22	163.73	RHYL	R	37	6	48	0.1	1480	6.0	2023	61.62	19.77	0.31	4.00	2.28	2.51	1.84	4.72	0.08	61.67	1.24			
DL94-67	FW	163.73	166.90	RHYL	R	20	6	41	0.1	2244	1.0	1069	62.86	20.89	0.27	2.98	2.66	1.82	1.16	5.78	0.07	73.91	2.29			
DL94-68	FW	166.90	168.90	RHYL	R	51	1	40	0.1	1416	6.0	3387	69.12	16.06	0.20	2.83	1.35	2.20	4.20	3.82	0.07	44.68	0.32			
DL94-69	FW	168.90	170.90	RHYL	R	15	5	34	0.1	1435	13.0	3589	67.18	18.59	0.22	2.57	1.64	2.02	1.31	4.77	0.06	65.81	1.25			
DL94-70	FW	170.90	172.90	RHYL	R	20	5	29	0.1	1094	3.0	840	70.23	15.93	0.20	2.49	1.32	1.84	3.98	3.84	0.07	46.99	0.33			
DL94-71	FW	172.90	174.90	RHYL	R	17	6	42	0.1	1358	6.0	1711	66.88	16.96	0.28	3.78	2.27	1.98	3.20	4.14	0.11	55.31	0.71			
DL94-72	FW	174.90	176.90	RHYL	R	28	9	35	0.1	1264	3.0	1728	70.63	15.75	0.19	2.81	1.45	2.12	2.76	4.43	0.09	54.65	0.53			
DL94-73	FW	176.90	179.15	RHYL	R	16	7	26	0.1	973	4.0	1794	69.31	16.41	0.22	2.70	1.47	2.73	2.60	4.06	0.03	50.92	0.57			
DL94-74	FW	179.15	181.15	DIOR	DI	158	8	96	2.0	256	6.0	1523	49.19	11.91	1.87	12.97	7.97	12.99	1.67	0.44	0.18	36.45	4.77			
DL94-75	FW	181.15	184.35	DIOR	DI	255	3	130	3.0	493	0.5	1462	50.78	13.06	2.48	13.91	5.51	10.43	2.43	0.33	0.19	31.23	2.27			
DL94-76	FW	184.35	187.35	RHYL	R	55	10	73	0.1	1295	9.0	1494	71.02	15.40	0.21	2.75	1.06	1.85	2.36	4.53	0.07	57.04	0.45			
DL94-77	FW	187.35	189.35	RHYL	R	27	20	64	0.1	1090	5.0	6534	69.40	16.56	0.19	2.64	1.05	2.55	1.59	3.82	0.09	54.05	0.66			
DL94-78	FW	189.35	191.35	RHYL	R	53	6	82	1.0	1179	14.0	5120	62.70	17.15	0.41	5.71	1.86	3.75	1.24	4.38	0.16	55.57	1.50			
DL94-79	FW	191.35	193.35	RHYL	R	69	27	76	0.1	1101	13.0	5471	60.85	18.40	0.37	5.33	1.83	3.86	0.95	4.66	0.15	57.43	1.93			
DL94-80	FW	193.35	195.35	RHYL	R	40	6	60	0.1	861	10.0	4481	66.58	17.97	0.23	3.32	1.57	2.68	1.85	4.12	0.12	55.68	0.85			
DL94-81	FW	195.35	197.40	RHYL	R	30	31	107	0.1	1160	8.0	5428	65.29	22.74	0.23	3.01	1.30	2.08	1.05	5.81	0.07	69.43	1.24			
AVE HANGINGWALL						183	849	2041	10.7	3468	60	25163	65.91	17.97	0.27	3.83	1.81	1.34	2.49	4.61	0.03	62.21	1.66			
STD DEV HANGINGWALL						322	2661	5256	22.6	2535	105	22342	4.30	2.73	0.04	1.64	1.00	0.91	1.62	1.63	0.02	16.48	1.83			
AVE FOOTWALL						34	14	62	0.6	1238	26	4993	66.91	17.95	0.34	3.21	1.85	2.62	1.43	4.72	0.06	63.32	12.59			
STD DEV FOOTWALL						42	30	93	1.3	537	91	6552	4.53	1.84	0.42	2.34	1.06	2.00	0.99	1.12	0.04	11.49	33.94			

ID \ Var:	SI02	AL203	TI02	FE203	MGO	CAO	NA2O	K2O	MNO	AS	BA	CU	PR	S	ZN	AG
	%	%	%	%	%	%	%	%	%	PPM	PPM	PPM	PPM	PPM	PPM	PPM
DL88-25	70.83	17.52	0.19	2.32	0.79	2.43	1.80	3.77	0.05	10	1058	19	7	2642	27	<1
DL88-26	65.72	18.34	0.34	4.20	1.60	4.32	0.56	4.44	0.08	27	1043	25	6	9300	74	<1
DL88-27	69.99	17.53	0.29	3.19	0.60	2.93	1.42	3.97	0.06	41	1137	13	8	15980	11	<1
DL88-28	69.58	18.31	0.32	2.79	0.80	2.81	1.55	3.94	0.07	26	1399	14	2	7663	25	<1
DL88-29	66.24	18.78	0.31	3.65	0.91	3.34	1.51	4.01	0.08	26	1493	18	7	10991	32	2
DL88-30	67.98	17.72	0.27	3.53	1.22	3.68	1.18	3.49	0.09	4	1183	12	2	3820	37	<1
DL88-31	66.32	18.83	0.28	3.29	1.16	3.12	1.17	3.79	0.07	2	1337	20	4	2592	34	<1
DL88-32	66.85	17.60	0.27	3.64	1.36	3.97	1.27	3.33	0.09	3	1274	14	5	2606	25	<1
DL88-33	64.03	19.27	0.28	3.62	1.44	4.28	1.34	3.67	0.09	<1	1303	9	7	4316	38	<1
DL88-34	65.49	17.83	0.27	3.21	1.25	4.72	1.30	3.31	0.09	2	1132	25	6	4499	49	<1
DL88-35	64.17	20.35	0.34	3.16	1.04	3.51	0.95	4.27	0.08	5	1424	21	8	5569	26	<1
DL88-36	66.37	18.63	0.29	3.15	1.17	3.19	0.75	3.61	0.07	4	1212	17	5	6328	33	<1
DL88-37	66.20	18.33	0.30	3.42	1.49	3.25	0.72	3.60	0.08	2	1192	16	7	4202	48	<1
DL88-38	67.14	19.21	0.32	3.05	1.15	3.43	1.11	3.77	0.08	5	1268	14	6	6482	32	<1
DL88-39	66.06	16.80	0.27	3.62	1.28	5.85	0.94	3.09	0.10	8	995	16	5	7988	27	<1
DL88-40	64.34	19.66	0.38	3.21	0.91	4.72	0.55	4.06	0.07	49	1649	38	8	8699	94	1
DL94-1	68.36	17.05	0.26	3.62	3.38	0.28	1.07	3.93	0.09	18	1566	28	10	177	77	<1
DL94-2	67.30	17.85	0.28	3.76	3.69	0.94	1.30	4.13	0.08	8	1812	25	12	853	78	<1
DL94-3	70.54	15.66	0.30	3.28	1.81	1.25	4.21	2.45	0.04	18	1209	101	17	9770	87	1
DL94-4	70.69	16.03	0.28	3.90	0.66	0.34	5.39	2.51	0.02	13	1235	32	18	27055	35	<1
DL94-5	71.82	15.51	0.26	2.54	0.71	0.63	5.93	2.14	0.02	9	1030	24	9	12729	27	<1
DL94-6	67.38	17.52	0.25	4.26	1.46	0.83	3.30	3.56	0.02	12	1473	38	8	26550	52	2
DL94-7	66.85	17.84	0.25	3.55	1.86	1.18	3.70	3.55	0.03	11	2162	29	15	20681	70	2
DL94-8	69.02	17.08	0.23	2.78	2.40	1.10	4.30	2.86	0.03	10	1473	40	5	12140	85	<1
DL94-9	65.94	16.55	0.23	6.60	2.15	1.38	3.70	3.06	0.04	6	1566	50	23	47792	87	2
DL94-10	52.12	24.62	0.38	3.85	2.53	3.00	1.57	7.81	0.05	10	3462	16	30	18656	75	1
DL94-11	64.35	19.85	0.30	3.13	1.93	1.20	2.11	5.33	0.03	4	2759	21	5	16061	88	2
DL94-12	67.52	18.26	0.28	2.80	1.72	1.30	2.73	4.58	0.03	7	2544	17	10	14727	120	1
DL94-13	69.55	17.26	0.24	2.35	1.61	1.74	2.74	4.41	0.03	10	2455	20	7	13167	103	<1
DL94-14	66.65	18.28	0.27	3.84	1.46	1.28	3.13	5.03	0.03	7	3090	30	13	27508	175	3
DL94-15	64.34	15.54	0.22	8.79	1.07	1.39	2.49	4.34	0.03	11	2507	38	25	82964	208	5
DL94-16	69.52	17.31	0.25	3.49	1.48	0.65	1.89	5.31	0.02	11	3265	15	15	23641	156	3
DL94-17	63.76	13.21	0.18	5.39	0.69	4.36	1.04	5.16	0.02	265	9130	842	5237	63989	12594	88
DL94-18	61.78	15.50	0.21	6.18	1.14	2.28	0.59	5.02	0.02	386	7564	1230	11669	73901	22220	67
DL94-19	61.48	21.67	0.31	2.22	1.96	1.15	0.35	7.17	0.02	193	8154	530	316	13632	2414	20
DL94-20	62.05	21.48	0.30	2.31	1.87	1.28	0.37	7.11	0.02	213	8363	579	351	15483	2728	21
DL94-21	63.12	23.20	0.34	1.79	2.24	0.54	0.32	7.32	0.02	37	6007	132	45	6941	1380	6
DL94-22	60.35	17.22	0.25	3.94	1.15	2.23	1.15	5.87	0.01	470	12927	1714	7534	40885	13481	136
DL94-23	60.44	18.38	0.25	4.20	1.74	2.27	1.34	5.78	0.03	18	7156	332	5969	35336	8182	33
DL94-24	65.92	18.02	0.23	2.01	1.53	3.40	1.14	5.55	0.04	8	3212	41	12	7889	76	<1
DL94-25	66.05	19.93	0.29	2.19	1.74	1.33	1.26	5.98	0.03	5	2134	28	19	8201	79	2
DL94-26	68.38	18.03	0.24	1.92	1.67	1.81	1.57	4.88	0.03	7	1952	42	16	7727	72	<1
DL94-27	68.46	18.87	0.24	2.15	1.76	2.07	0.97	5.27	0.04	4	1045	91	10	8182	111	<1
DL94-28	70.51	17.95	0.24	2.03	1.48	1.64	0.23	5.21	0.03	6	996	15	6	7027	36	<1
DL94-29	64.11	20.37	0.30	2.52	2.01	2.61	0.33	6.61	0.05	12	1054	17	6	5952	58	1
DL94-30	66.72	17.23	0.22	2.42	1.32	4.68	0.31	5.20	0.05	8	1125	27	8	12662	54	<1
DL94-31	72.11	17.26	0.23	2.05	1.34	1.56	0.62	4.73	0.03	5	605	18	5	7555	45	<1
DL94-32	65.40	19.46	0.28	2.40	1.64	2.03	1.26	5.59	0.04	15	874	20	10	8462	66	<1
DL94-33	66.97	19.49	0.29	2.38	1.57	1.79	1.27	5.40	0.03	6	1039	48	11	7307	47	<1
DL94-34	70.16	17.53	0.25	2.52	1.18	1.79	1.82	4.31	0.03	5	2806	30	10	12517	33	1
DL94-35	68.15	17.68	0.26	4.13	1.26	1.46	2.38	4.22	0.03	9	1113	34	33	25671	25	1
DL94-36	67.96	18.21	0.24	1.80	1.43	2.38	2.06	4.47	0.04	8	1404	15	9	3804	26	1
DL94-37	67.40	18.35	0.26	1.80	1.33	2.15	3.11	4.16	0.04	3	1207	12	14	3959	21	<1
DL94-38	68.21	19.11	0.28	1.96	1.48	1.55	1.36	5.20	0.04	8	1248	16	5	2790	29	<1
DL94-39	71.36	17.11	0.23	2.38	1.85	1.46	0.03	5.32	0.05	8	1033	16	2	2299	23	1

ID \ Var:	SI02	AL203	TI02	FE203	MGO	CAO	NA2O	K2O	MNO	AS	BA	CU	PB	S	ZN	AG
	%	%	%	%	%	%	%	%	%	PPM	PPM	PPM	PPM	PPM	PPM	PPM
DL94-40	66.35	18.41	0.28	2.83	2.27	2.94	0.06	5.89	0.07	10	1147	11	6	1769	39	<1
DL94-41	65.21	20.36	0.24	2.97	2.29	2.11	0.04	6.56	0.06	14	878	16	10	5718	30	<1
DL94-42	69.57	17.30	0.14	2.41	2.39	2.73	<0.01	5.16	0.07	7	688	8	5	1797	32	<1
DL94-43	64.86	21.68	0.19	2.40	2.22	1.26	0.03	7.05	0.05	13	1082	18	8	1377	46	<1
DL94-44	68.31	17.48	0.17	2.18	1.60	1.56	<0.01	5.16	0.04	23	814	10	8	969	35	<1
DL94-45	66.39	18.77	0.20	2.38	2.06	2.29	0.74	5.54	0.05	2	1258	19	9	590	46	<1
DL94-46	67.44	17.67	0.19	2.34	2.06	3.40	0.66	5.18	0.05	4	1070	17	10	533	44	<1
DL94-47	69.51	18.02	0.19	2.17	2.04	2.09	0.49	5.30	0.04	7	1280	12	5	1739	43	<1
DL94-48	70.53	15.04	0.23	4.96	0.97	2.15	2.36	3.47	0.03	24	1574	101	236	42149	741	9
DL94-49	69.71	18.02	0.27	2.14	1.11	1.86	2.49	4.43	0.03	12	1562	19	28	12068	75	2
DL94-50	71.24	17.30	0.25	2.41	1.11	1.76	1.72	4.17	0.03	10	1485	29	20	13777	82	2
DL94-51	69.07	18.52	0.28	1.83	1.36	1.73	1.98	4.57	0.03	10	1253	36	12	4898	57	<1
DL94-52	70.86	16.72	0.26	1.98	1.26	2.16	2.89	3.81	0.04	7	1173	5	7	1862	19	<1
DL94-53	69.74	17.27	0.26	2.41	1.33	2.24	2.56	4.09	0.04	10	1266	8	4	1613	22	<1
DL94-54	68.40	18.69	0.26	2.18	1.25	2.49	1.36	4.65	0.05	23	1441	22	12	2227	31	<1
DL94-55	52.76	16.22	2.01	10.77	3.58	8.07	0.86	3.80	0.14	130	466	152	<2	3030	74	<1
DL94-56	69.22	18.20	0.21	2.58	1.48	1.67	2.29	4.13	0.05	9	1082	22	4	2304	34	<1
DL94-57	69.51	18.00	0.21	2.50	1.57	1.83	1.19	4.60	0.05	7	891	20	8	1793	40	<1
DL94-58	69.92	17.84	0.23	2.55	1.77	1.80	0.51	5.10	0.05	3	1163	19	4	795	38	<1
DL94-59	68.54	18.48	0.25	2.69	1.95	1.72	0.68	5.21	0.05	7	1019	14	20	1696	40	1
DL94-60	61.12	21.40	0.25	3.32	2.38	2.34	0.98	6.58	0.06	5	1381	6	4	1704	43	<1
DL94-61	68.76	17.20	0.18	2.98	1.91	2.55	1.76	4.27	0.07	5	714	14	6	2493	48	<1
DL94-62	69.15	18.08	0.26	2.69	1.52	1.89	1.35	4.80	0.05	8	795	17	10	1783	39	<1
DL94-63	69.50	17.04	0.26	2.95	1.77	2.60	1.04	4.64	0.06	2	820	9	4	1643	43	1
DL94-64	66.74	18.86	0.26	2.67	1.60	1.91	0.12	5.10	0.05	273	2905	18	8	2784	38	1
DL94-65	66.59	20.35	0.21	2.67	1.50	1.64	0.58	4.69	0.05	750	1005	17	4	4138	24	<1
DL94-66	61.62	19.77	0.31	4.00	2.28	2.51	1.84	4.72	0.08	6	1480	37	6	2023	48	<1
DL94-67	62.86	20.89	0.27	2.98	2.66	1.82	1.16	5.78	0.07	1	2244	20	6	1069	41	<1
DL94-68	69.12	16.06	0.20	2.83	1.35	2.20	4.20	3.82	0.07	6	1416	51	<2	3387	40	<1
DL94-69	67.18	18.59	0.22	2.57	1.64	2.02	1.31	4.77	0.06	13	1485	15	5	3589	34	<1
DL94-70	70.23	15.93	0.20	2.49	1.32	1.84	3.98	3.84	0.07	3	1094	20	5	840	29	<1
DL94-71	66.88	16.96	0.28	3.78	2.27	1.98	3.20	4.14	0.11	6	1358	17	6	1711	42	<1
DL94-72	70.63	15.75	0.19	2.81	1.45	2.12	2.76	4.43	0.09	3	1264	28	9	1728	35	<1
DL94-73	69.31	16.41	0.22	2.70	1.47	2.73	2.60	4.06	0.08	4	973	16	7	1794	26	<1
DL94-74	49.19	11.91	1.87	12.97	7.97	12.99	1.67	0.44	0.18	6	256	158	8	1523	96	2
DL94-75	50.78	13.06	2.48	13.91	5.51	10.43	2.43	0.33	0.19	<1	493	255	3	1462	130	3
DL94-76	71.02	15.40	0.21	2.75	1.06	1.85	2.36	4.53	0.07	9	1295	55	10	1494	73	<1
DL94-77	69.40	16.56	0.19	2.64	1.05	2.55	1.59	3.82	0.09	5	1090	27	20	6534	64	<1
DL94-78	62.70	17.15	0.41	5.71	1.86	3.75	1.24	4.38	0.16	14	1179	53	6	5120	82	1
DL94-79	60.85	18.40	0.37	5.33	1.83	3.86	0.95	4.66	0.15	13	1101	69	27	5471	76	<1
DL94-80	66.58	17.97	0.23	3.32	1.57	2.68	1.85	4.12	0.12	10	861	40	6	4481	60	<1
DL94-81	62.29	22.74	0.23	3.01	1.30	2.08	1.05	5.81	0.07	8	1160	30	31	5428	107	<1

SARA PROJECT

## LITHOGEOCHEMISTRY

DDH 94

SECTION \_\_\_\_\_

(CORONATION ZONE HANGINGWALL &amp; FOOTWALL)

SAMPLE No	KEY	FROM	TO	METERS	LITHOLOGY	COMMENTS
DL94-1		28.90	30.90	2.00		
DL94-2		30.90	32.64	1.74		
DL94-3		32.64	34.64	2.00		
DL94-4		34.64	36.64	"		
DL94-5		36.64	38.64	"		
DL94-6		38.64	40.64	"		
DL94-7		40.64	42.64	"		
DL94-8		42.64	44.64	"		
DL94-9		44.64	46.42	1.78		
DL94-10		46.42	48.42	2.00		
DL94-11		48.42	50.42	"		
DL94-12		50.42	52.42	"		
DL94-13		52.42	54.42	"		
DL94-14		54.42	56.42	"		
DL94-15		56.42	58.42	"		
DL94-16		58.42	60.41	1.99		
DL94-17		60.41	62.41	"		
DL94-18		62.41	64.41	"		

PROJECT

LITHO GEOCHEMISTRY

DDH 94 SECTION \_\_\_\_\_

(CORONATION ZONE HANGINGWALL & FOOTWALL)

SAMPLE No	KEY	FROM	TO	METERS	LITHOLOGY	COMMENTS
DL 94-19		64.49	66.93	2.52		
DL 94-20		66.93	68.93	2.00		
DL 94-21		68.93	69.95	1.05		
DL 94-22		69.95	<del>71.95</del>	2.00		
DL 94-23		71.95	74.37	2.42		
DL 94-24		74.37	76.37	2.00		
DL 94-25		76.37	78.37	"		
DL 94-26		78.37	80.37	"		
DL 94-27		80.37	82.37	"		
DL 94-28		82.37	84.37	"		
DL 94-29		84.37	86.37	"		
DL 94-30		86.37	88.37	"		
DL 94-31		88.37	90.37	"		
DL 94-32		90.37	92.37	"		
DL 94-33		92.37	94.37	"		
DL 94-34		94.37	96.37	"		
DL 94-35		96.37	98.37	"		
DL 94-36		98.37	100.37	"		

A PROJECT

## LITHOGEOCHEMISTRY

DH 94

SECTION \_\_\_\_\_

(CORONATION ZONE HANGINGWALL &amp; FOOTWALL)

SAMPLE No	KEY	FROM	TO	METERS	LITHOLOGY	COMMENTS
DL94-37		100.37	102.37	2.00		
DL94-38		102.37	106.37	"		
DL94-39		106.37	107.72	1.35		
DL94-40		107.72	109.72	2.00		
DL94-41		109.72	111.72	"		
DL94-42		111.72	113.72	"		
DL94-43		113.72	115.72	"		
DL94-44		115.72	117.72	"		
DL94-45		117.72	119.72	"		
DL94-46		119.72	121.72	"		
DL94-47		121.72	124.09	2.37		
DL94-48		124.09	126.09	2.00		
DL94-49		126.09	128.09	"		
DL94-50		128.09	130.09	"		
DL94-51		130.09	132.09	"		
DL94-52		132.09	134.09	"		
DL94-53		134.09	136.09	"		
DL94-54		136.09	138.80	2.71		

A PROJECT

## LITHOGEOCHEMISTRY

DH 94

SECTION

(CORONATION ZONE HANGINGWALL &amp; FOOTWALL)

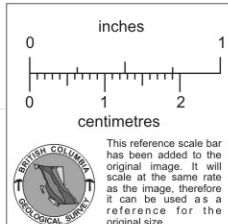
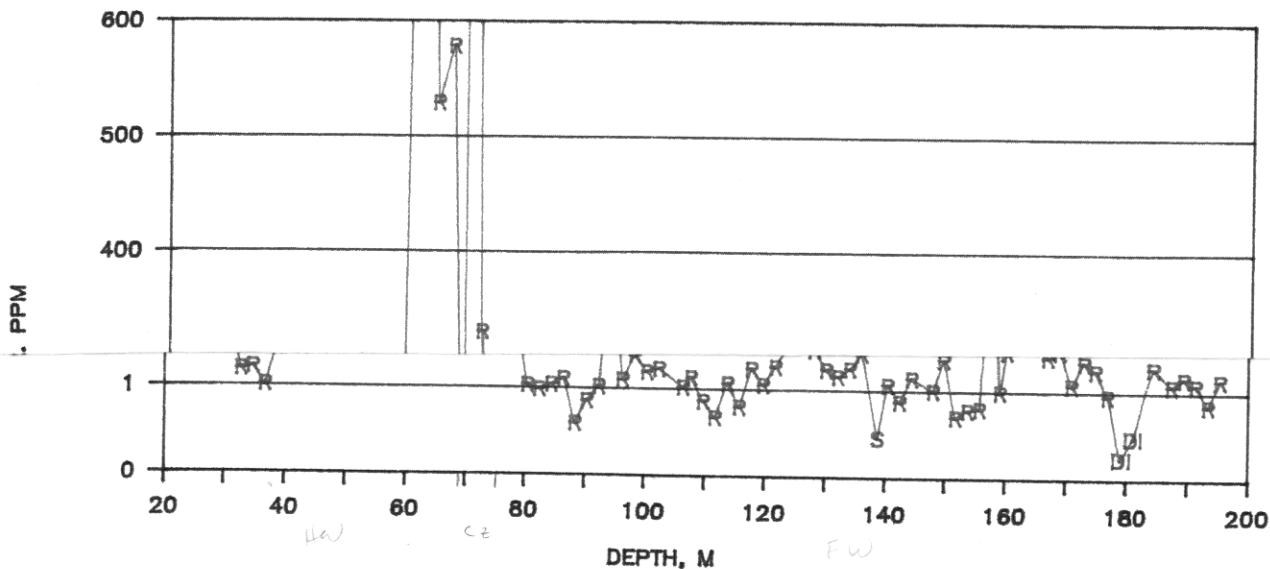
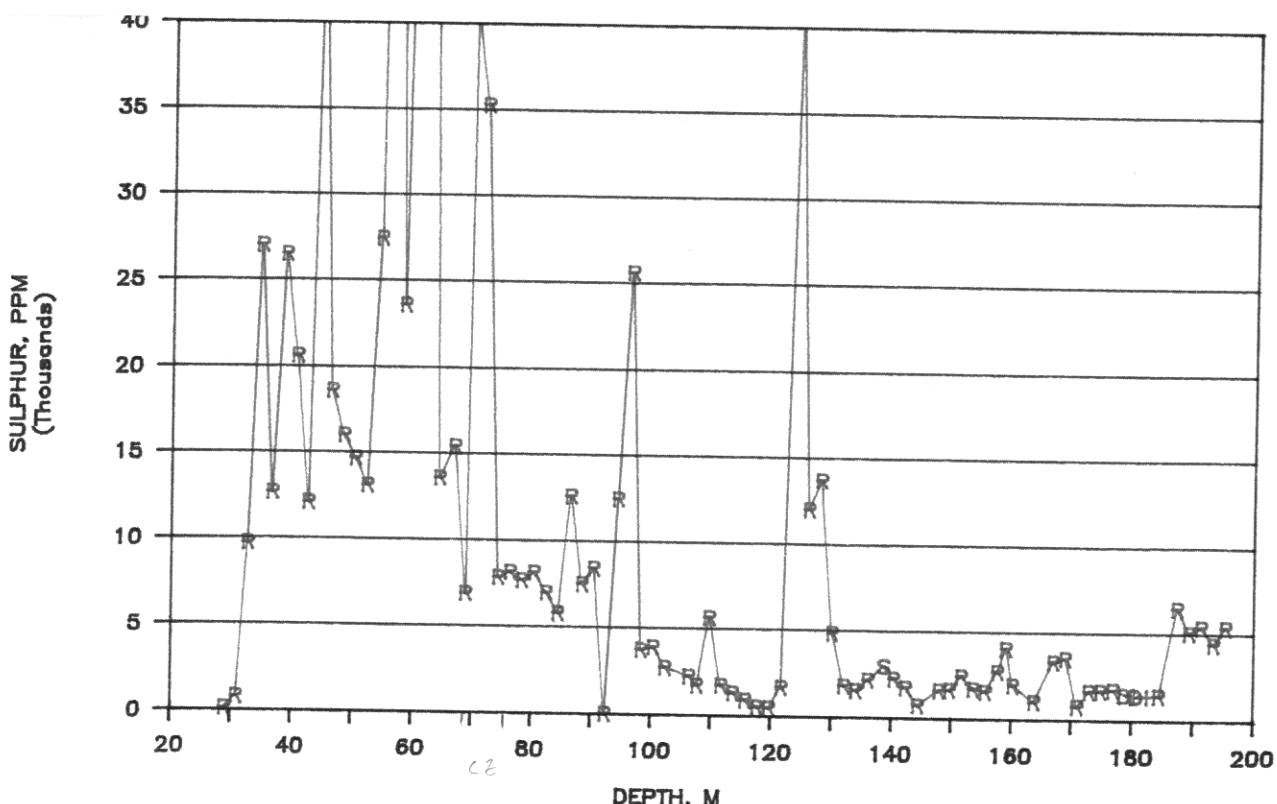
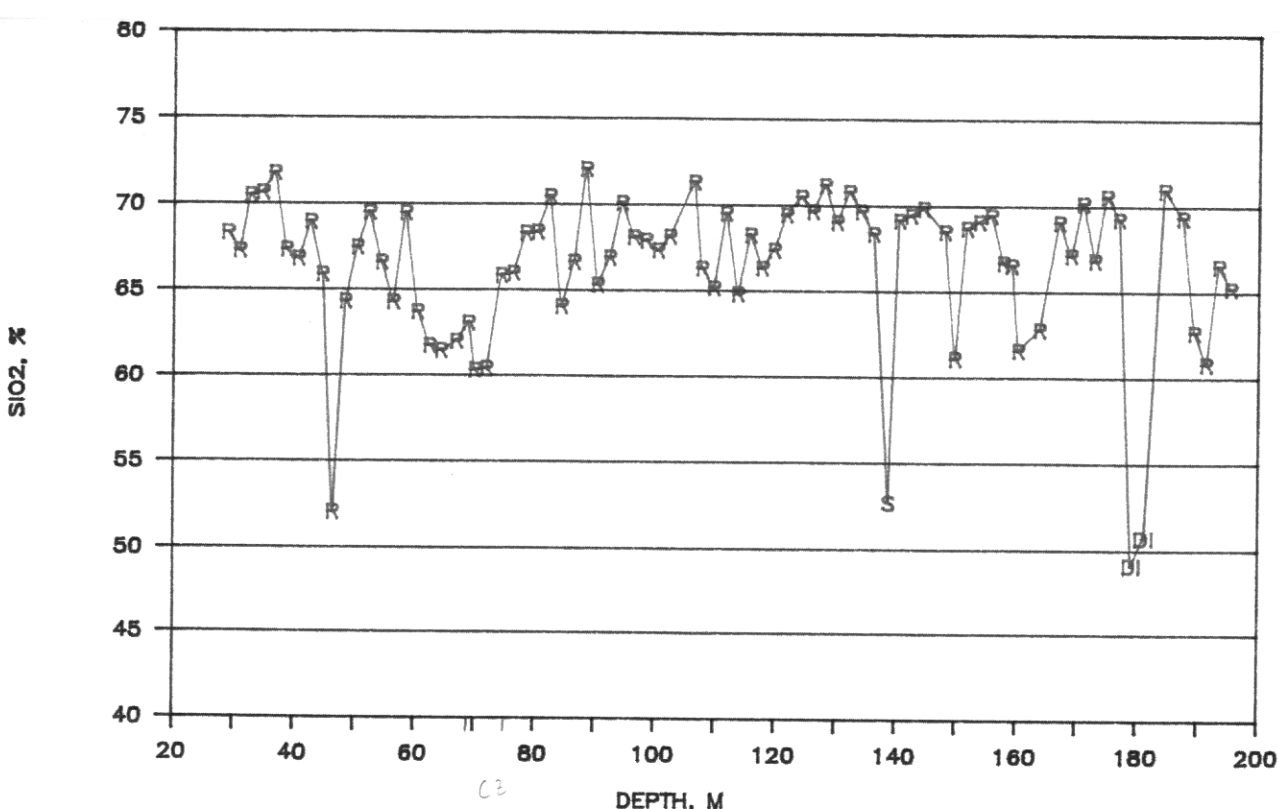
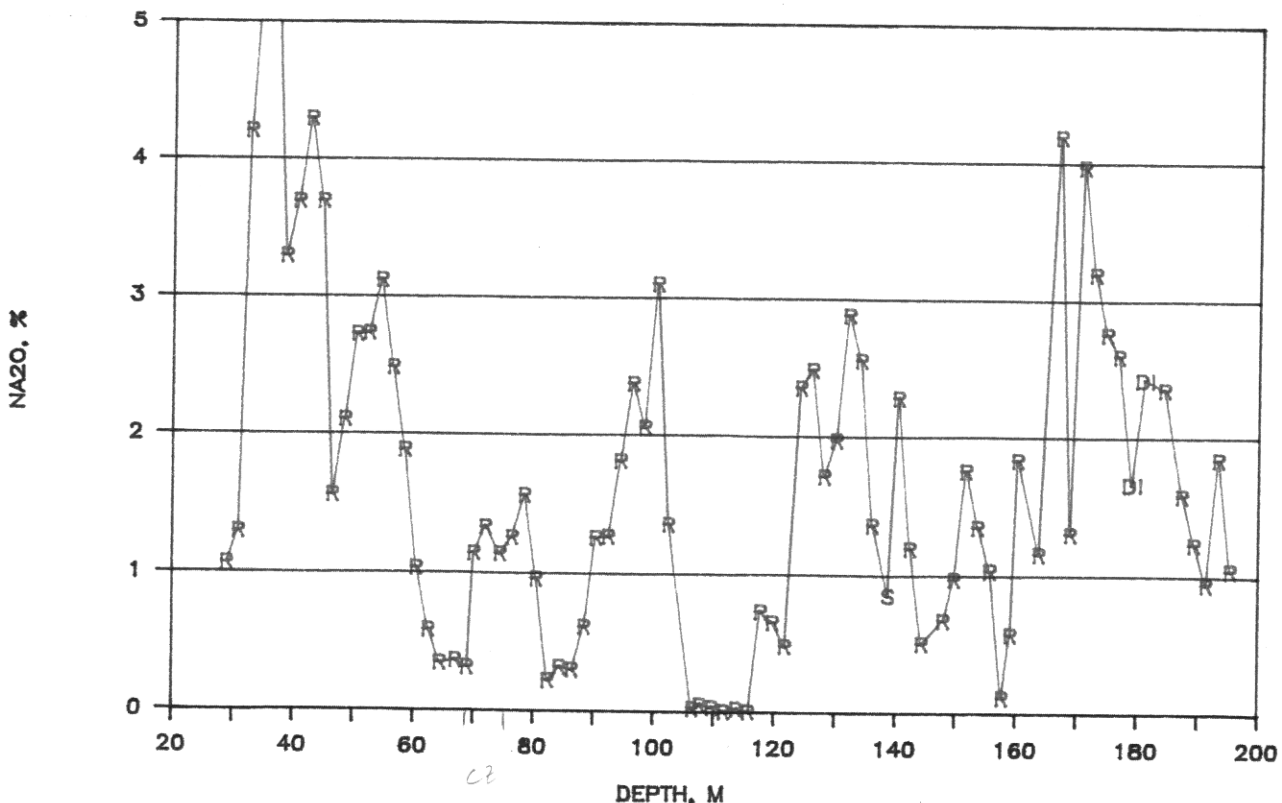
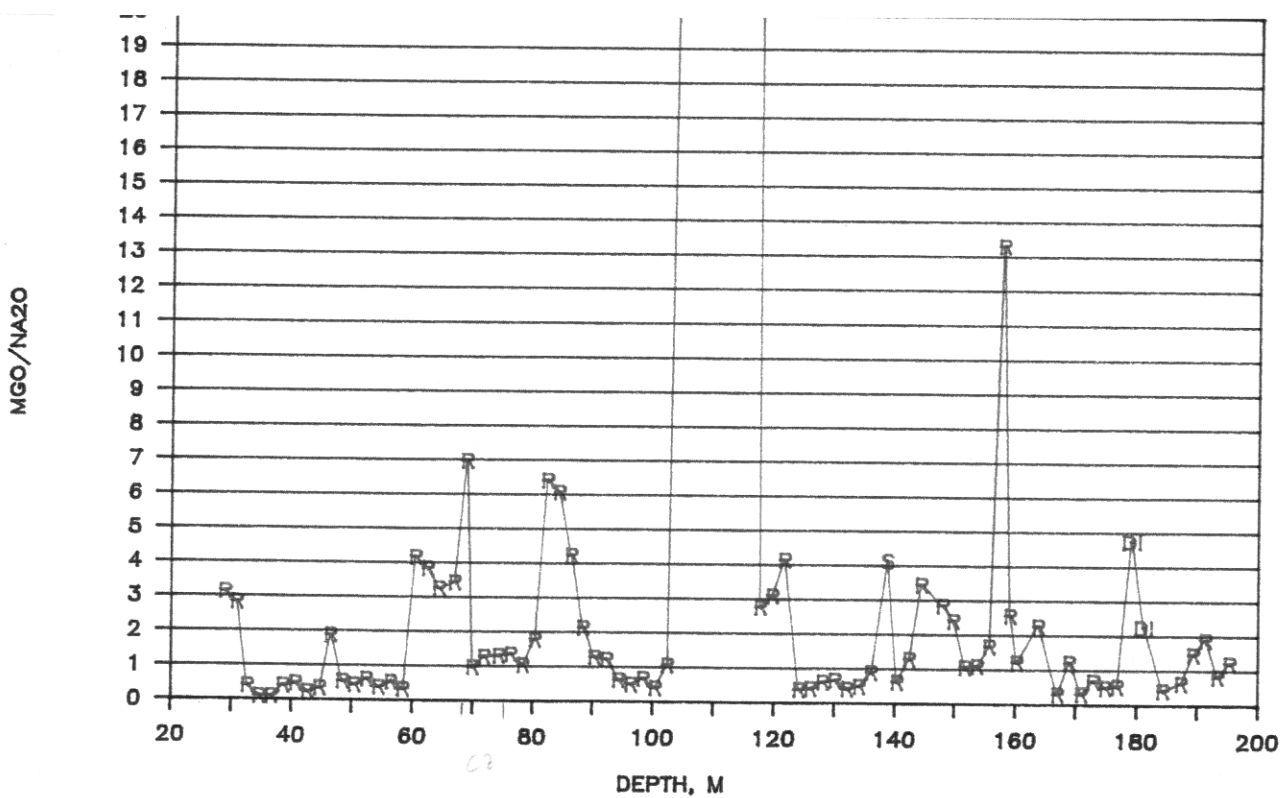
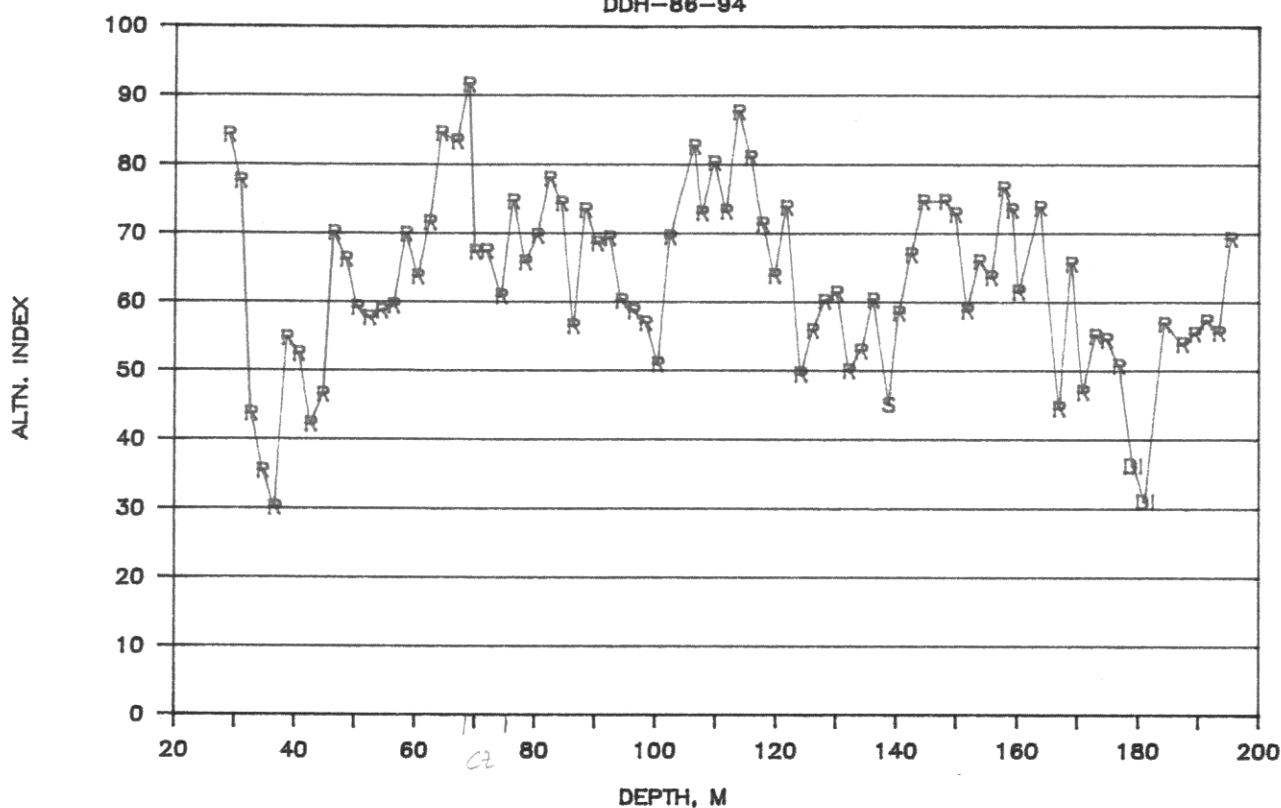
SAMPLE No	KEY	FROM	TO	METERS	LITHOLOGY	COMMENTS
DL94-55	MDST	138.80	140.42	1.62		
DL94-56		140.42	142.42	2.00		
DL94-57		142.42	144.42	"		
DL94-58		144.42	147.96	3.54		
DL94-59		147.96	149.71	1.85		
DL94-60		149.71	151.71	2.00		
DL94-61		151.71	153.71	"		
DL94-62		153.71	155.71	"		
DL94-63		155.71	157.71	"		
DL94-64	MDST	157.71	159.08	1.37		
DL94-65	ARG	159.08	160.22	1.14		
DL94-66		160.22	163.73	3.51		
DL94-67		163.73	166.90	3.17		
DL94-68		166.90	168.90	2.00		
DL94-69		168.90	170.90	"		
DL94-70		170.90	172.90	"		
DL94-71		172.90	174.90	"		
DL94-72		174.90	176.90	"		





# LARA HALO STUDY

DDH-86-94



This reference scale bar has been added to the original image. It will scale at the same rate as the image, therefore it can be used as a reference for the original size.