

FIELD RESULTS Mt. Sicker
1984 092B/13
827669

CRONE PEM/DEEPEM SURVEY

June 84 D. Croft
D. LeFebvre

PEM RESULTS

- | | <u>Results</u> |
|------------------------------------|-----------------------------------|
| MTS1 - 2 surveys, same loop | - no anomalies |
| MTS2 - 1 survey, same loop as MTS1 | - 2 channel in-hole -110m |
| MTS3 - blocked at top ~10m | |
| MTS4 - 5 surveys, 5 loops | - no anomalies, not-to-target |
| MTS5 - 3 surveys, 3 loops | - several walk off-hole responses |

CRONE GEOPHYSICS Ltd.
BOREHOLE-PEM

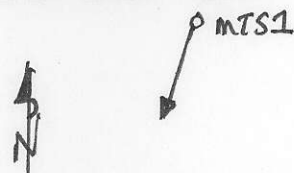
Client: CFC
Date: 60/5 1:62
Grid:
Gain: 250
Ramp Time: 1.5

Project: SICKER

Tx Loop: 1
Time Base: 10
ZTS: ZTS: 610

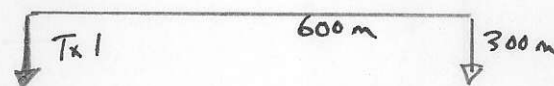
DDH# MTS1

Top of log: 20m
Bottom of log: 170m
Scale: 1:1000

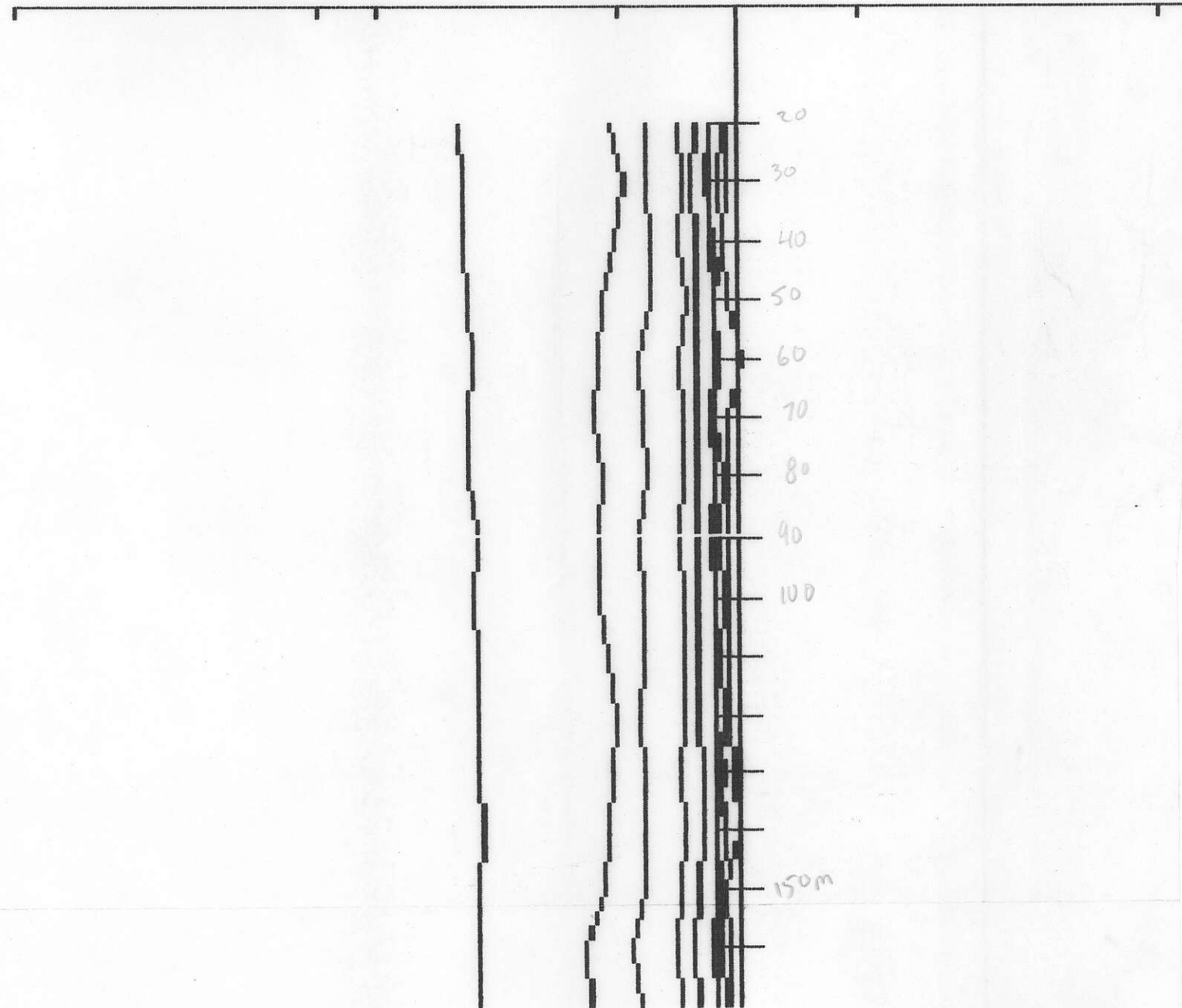


0 100m

- Signs Reversed



-1000 Primary Pulse +1000
-1000 -100 -10 +10 +100



CRONE GEOPHYSICS Ltd.
BOREHOLE-PEM

Client: CFC
Date: 60/5 1:70
Grid:
Gain: 500
Ramp Time: 1.5

Project: SICKER

Tx Loop: 1
Time Base: 10
ZTS: ZTS: 611

DDH# MTSA1

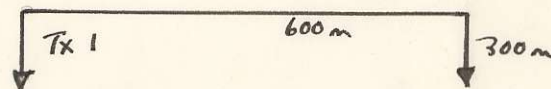
Top of log: 20m
Bottom of log: 170m
Scale: 1:1000



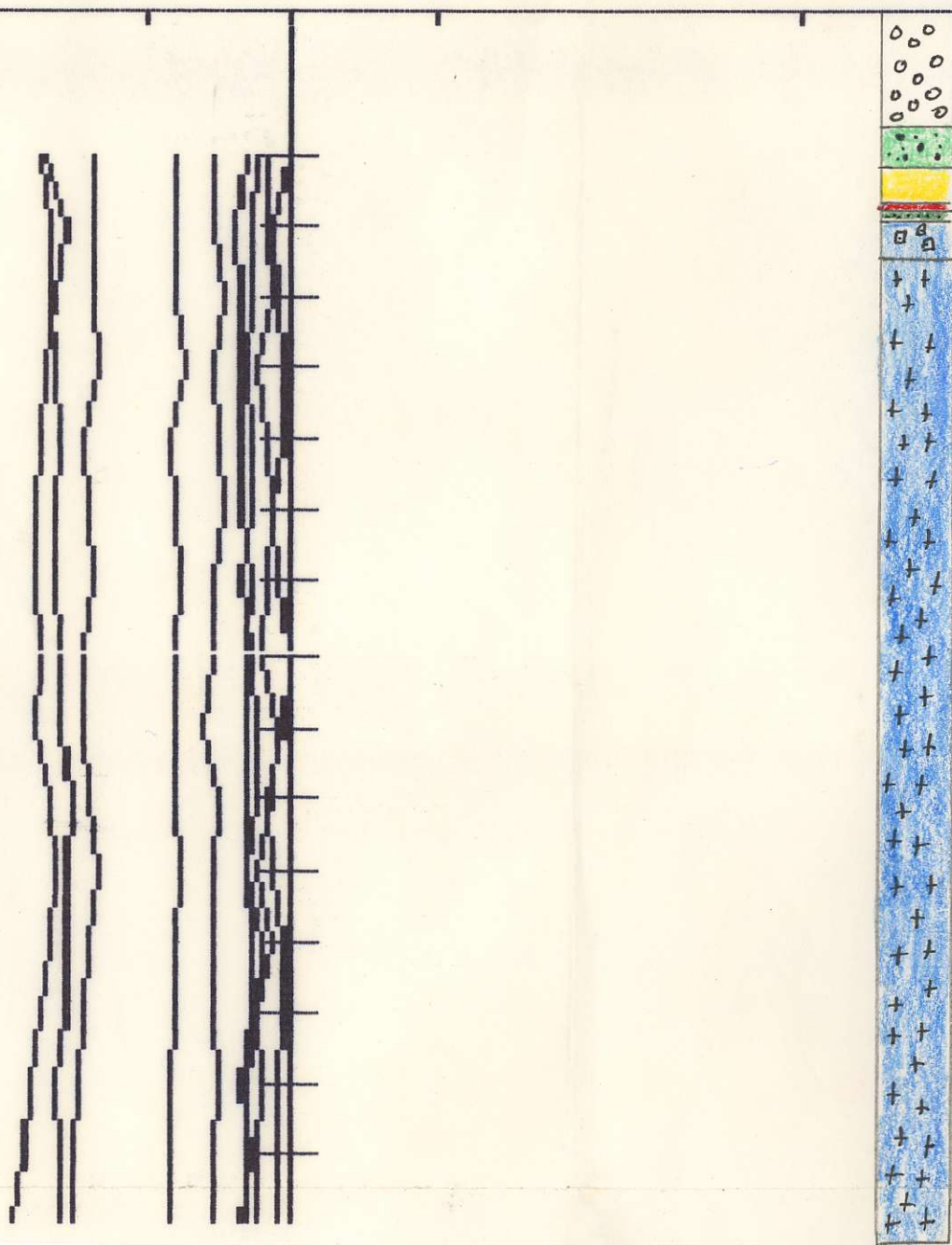
0 MTSA1

0 100m

- sign reversed -



-1000 Primary Pulse +1000
-1000 -100 -10 +10 +100 +10



- OB
- Int. Lappills
Tuff
- Cherty Rhyo
Chert
Mafic Tuff
- Feldspar
Diomite
Porphyry
- Qtz
- Bearing
Diomite

CRONE GEOPHYSICS Ltd.
BOREHOLE-PEM

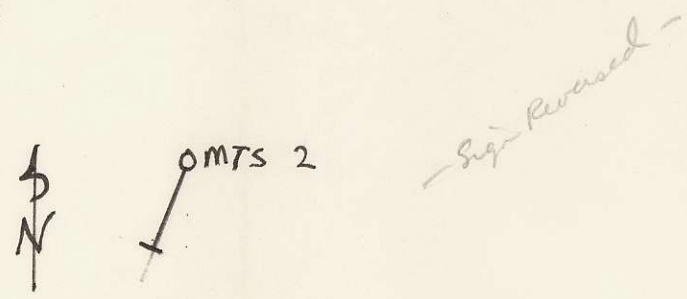
Client: CFC
Date: 60/5 1:84
Grid:
Gain: 250
Ramp Time: 1.5

Project: SICKER

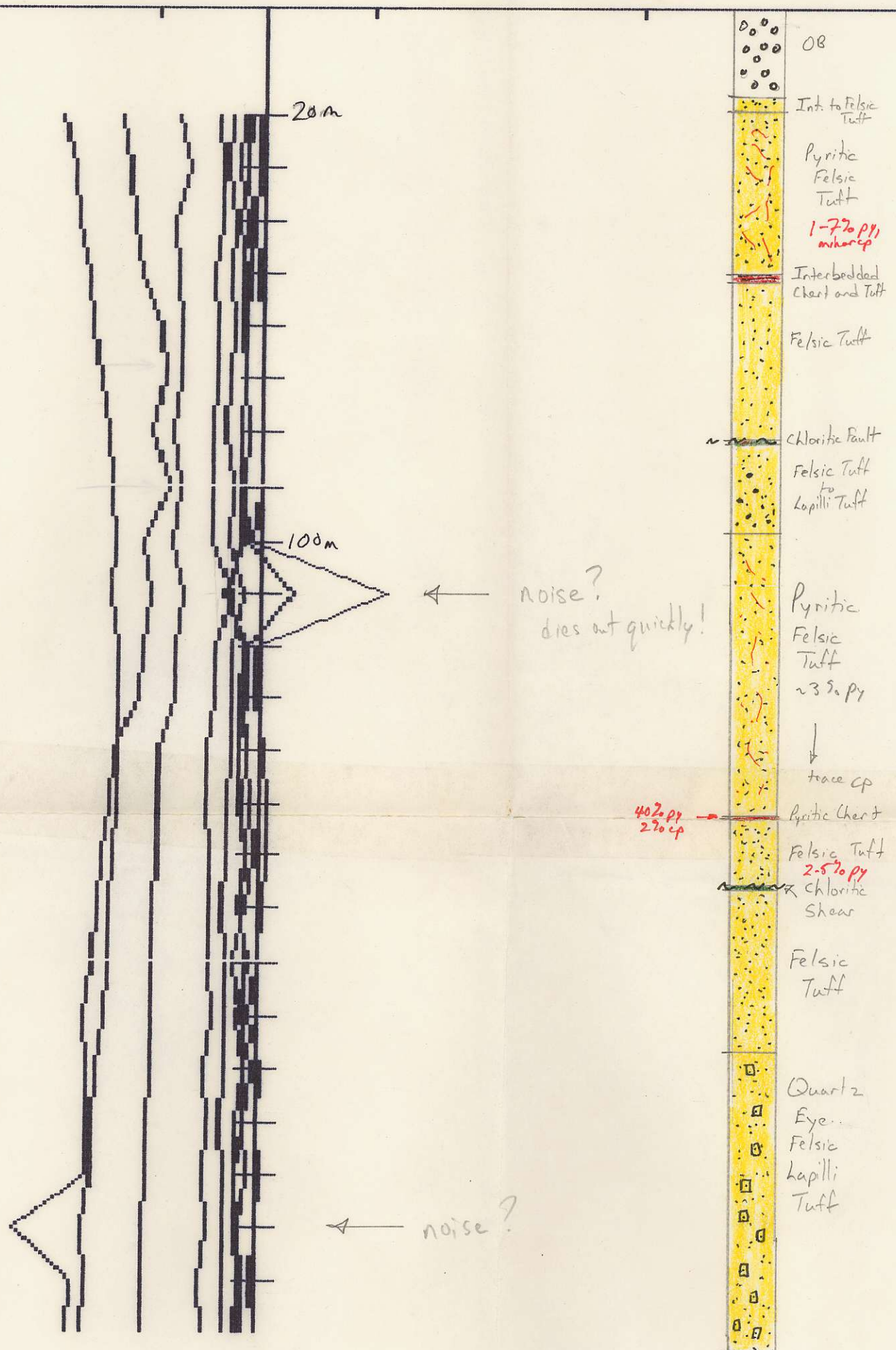
Tx Loop: 1
Time Base: 10
ZTS: ZTS: 620

DDH# MTS2

Top of log: 20m
Bottom of log: 250m
Scale: 1:1000



-1000 Primary Pulse +1000
-1000 -100 -10 +10 +100 +1000



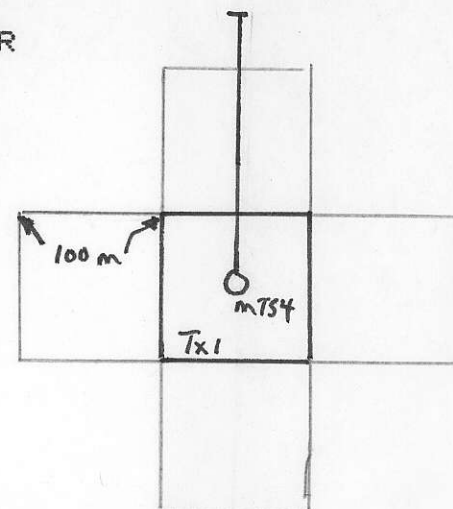
BOREHOLE-PEM

Client: CFC
 Date: 60/6 1:74
 Grid:
 Gain: 250
 Ramp Time: 1.5

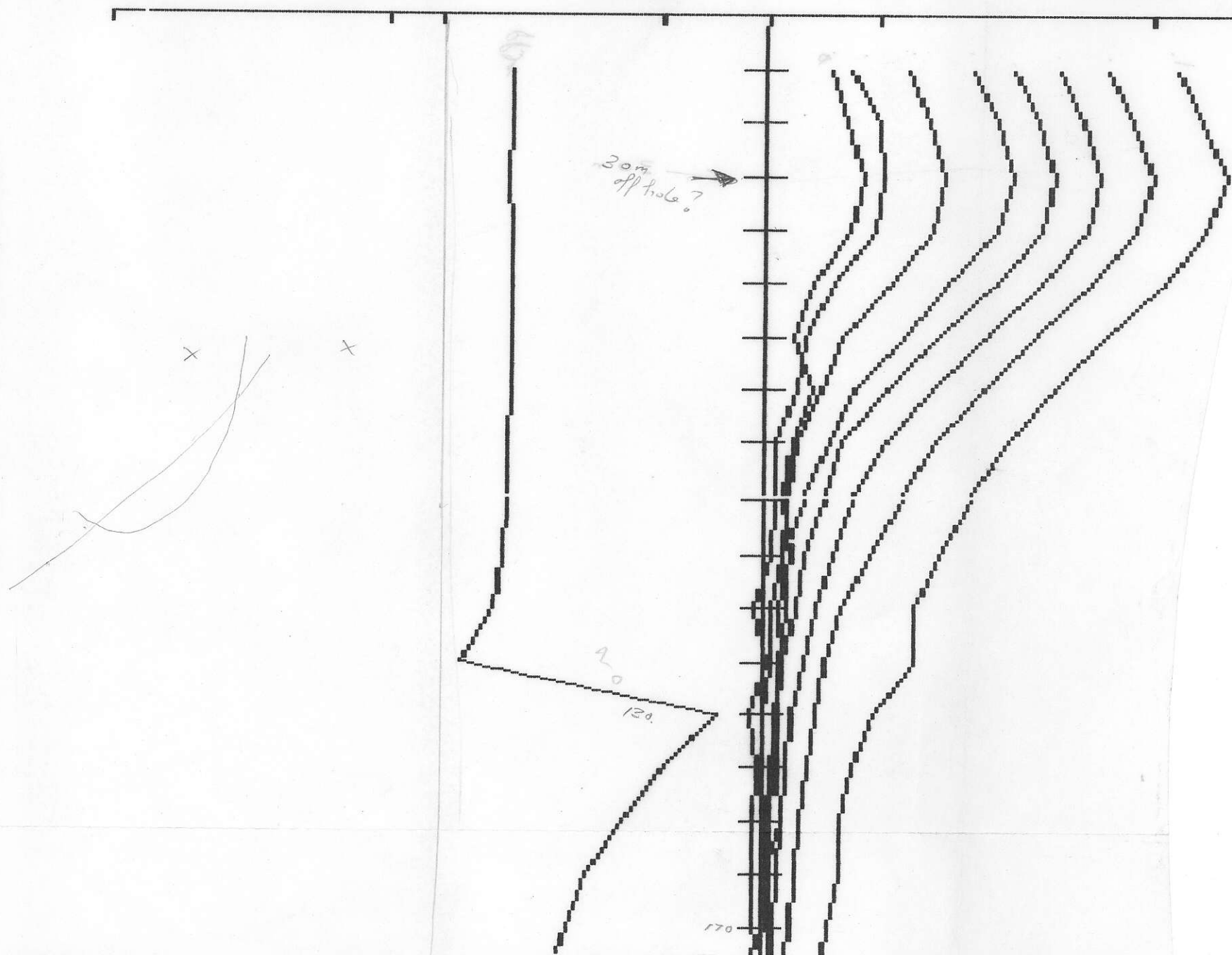
Project: SICKER
 Tx Loop: 1
 Time Base: 10
 ZTS: ZTS: 616

DDH# MTS4

Top of log: 10m
 Bottom of log: 175m
 Scale: 1:1000



-1000 Primary Pulse +1000
 -1000 -100 -10 +10 +100



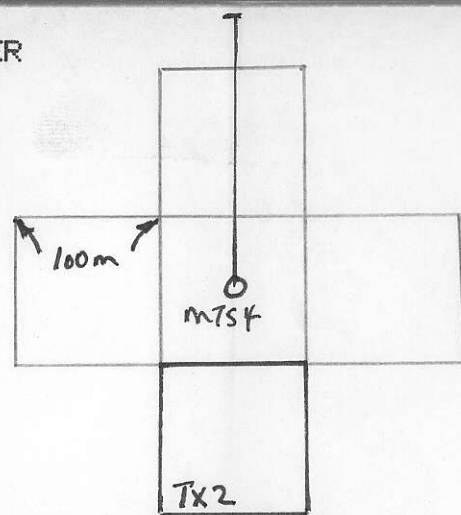
Client: CFC
Date: 60/6 1:81
Grid:
Gain: 250
Ramp Time: 1.5

Project: SICKER

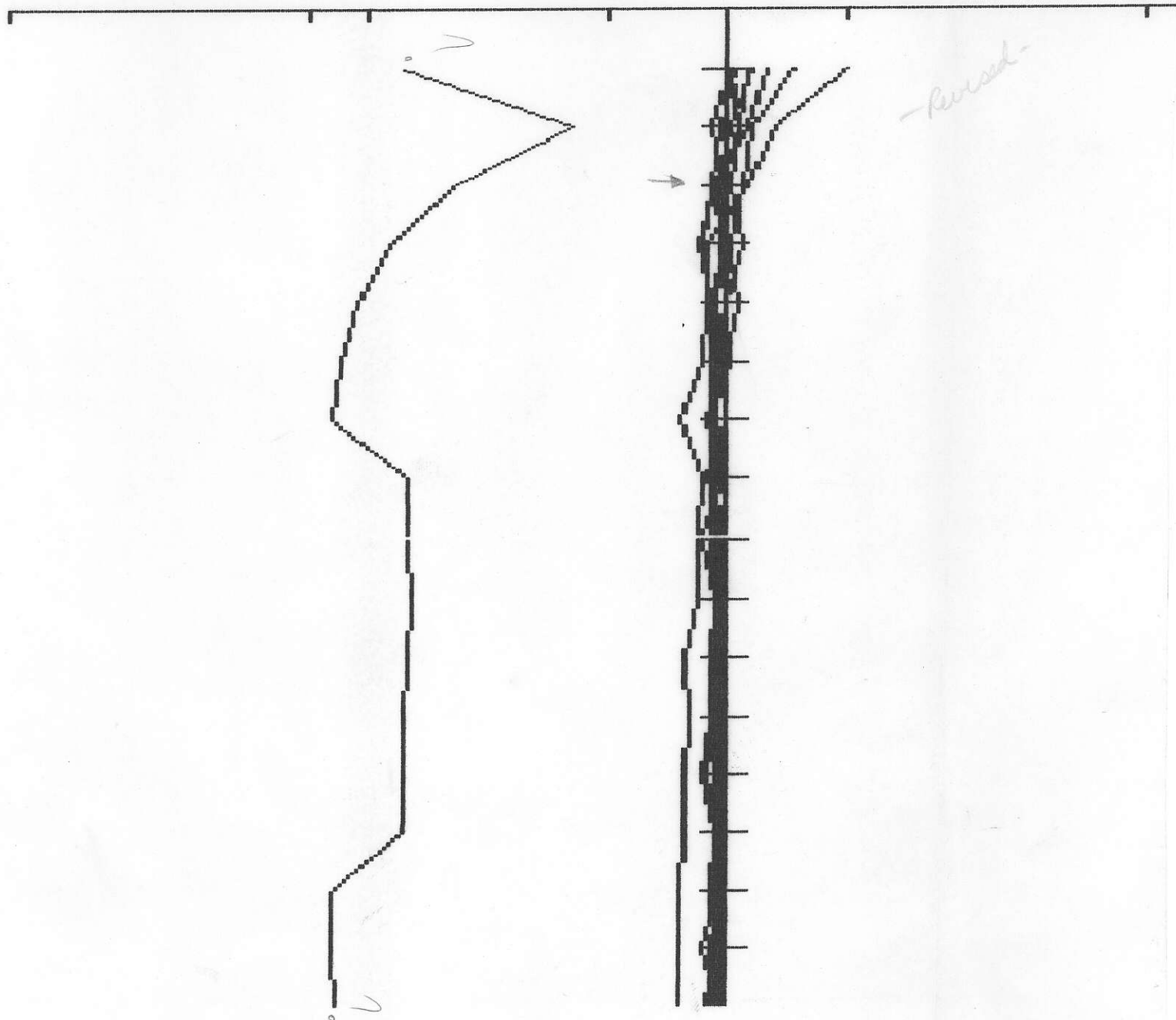
Tx Loop: 2
Time Base: 10
ZTS: ZTS: 618

DDH# MTS4

Top of log: 10m
Bottom of log: 170m
Scale: 1:1000



-1000 Primary Pulse +1000
-1000 -100 -10 +10 +100



CRONE GEOPHYSICS Ltd.
BOREHOLE-FEM

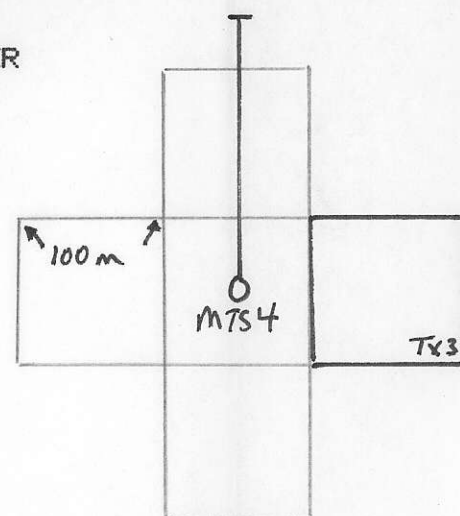
Client: CFC
Date: 60/6 6:06
Grid:
Gain: 250
Ramp Time: 1.5

Project: SICKER

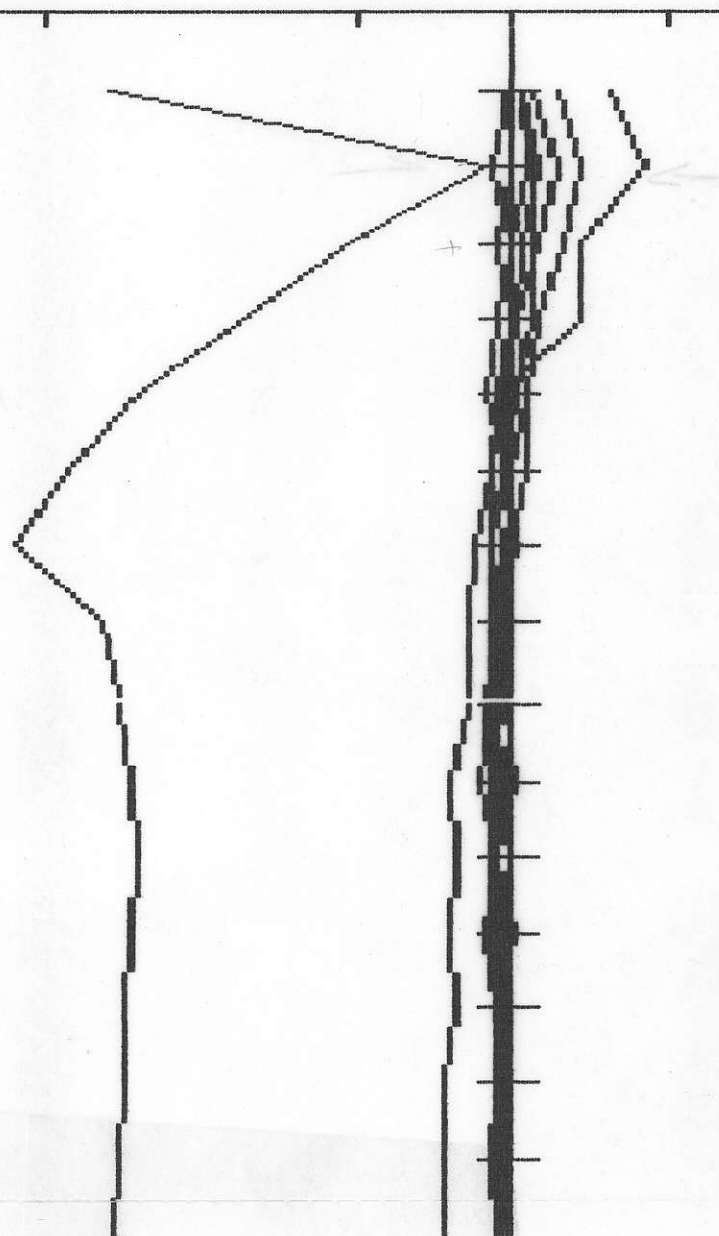
Tx Loop: 3
Time Base: 10
ZTS: ZTS: 618

DDH# MTS4

Top of log: 10m
Bottom of log: 160m
Scale: 1:1000



-1000 Primary Pulse +1000
-1000 -100 -10 +10 +100



CRONE GEOPHYSICS Ltd.
BOREHOLE-PEM

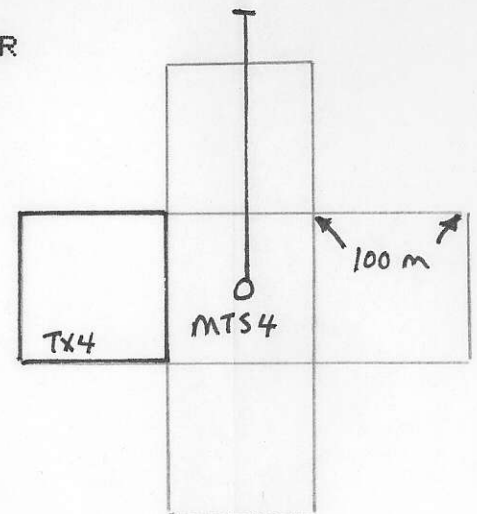
Client: CFC
Date: 60/7 1:23
Grid:
Gain: 250
Ramp Time: 1.5

Project: SICKER

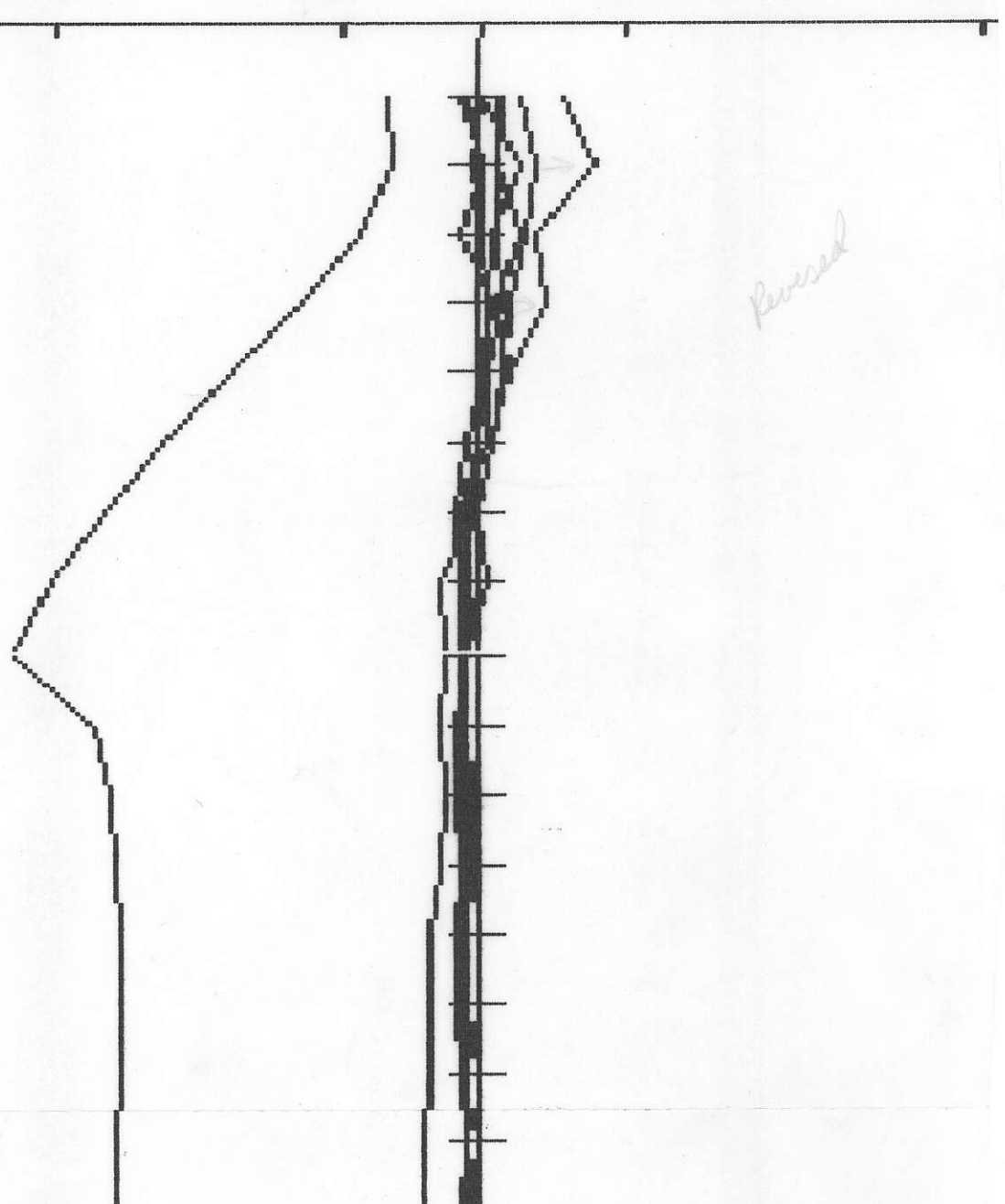
Tx Loop: 4
Time Base: 10
ZTS: ZTS: 616

DDH# MTS4

Top of log: 10m
Bottom of log: 170m
Scale: 1:1000



-1000 Primary Pulse +1000
-1000 -100 -10 +10 +100



CRONE GEOPHYSICS Ltd.
BOREHOLE-PEM

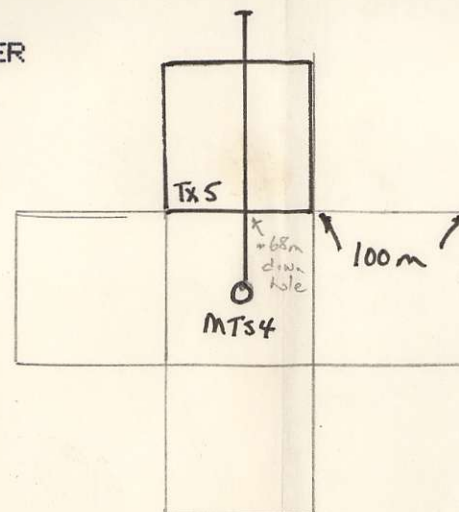
Client: CFC
Date: 60/7 1:35
Grid:
Gain: 250
Ramp Time: 1.5

Project: SICKER

Tx Loop: 5
Time Base: 10
ZTS: ZTS: 618

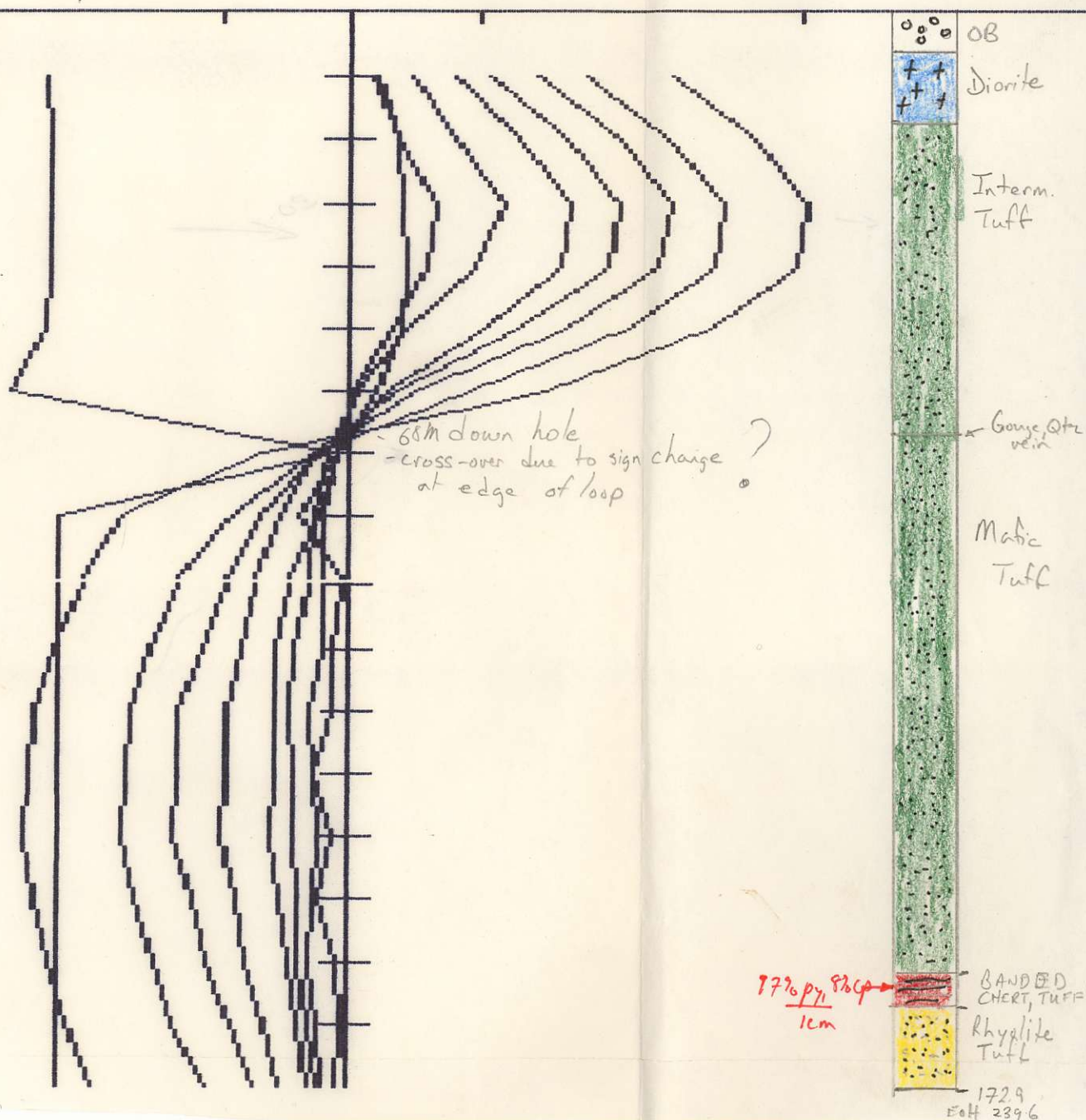
DDH# MTS4

Top of log: 10m
Bottom of log: 170m
Scale: 1:1000



Revised

-1000 Primary Pulse +1000
-1000 -100 -10 +10 +100 +1000



1729 82cp
1cm
Banded Chert, Tuff
Rhyolite Tuff
1729
E04 2396

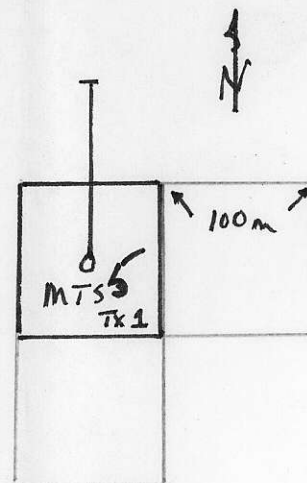
CRONE GEOPHYSICS Ltd.
BOREHOLE-FEM

Client: CFC
Date: 60/7 1:64
Grid:
Gain: 250
Ramp Time: 1.5

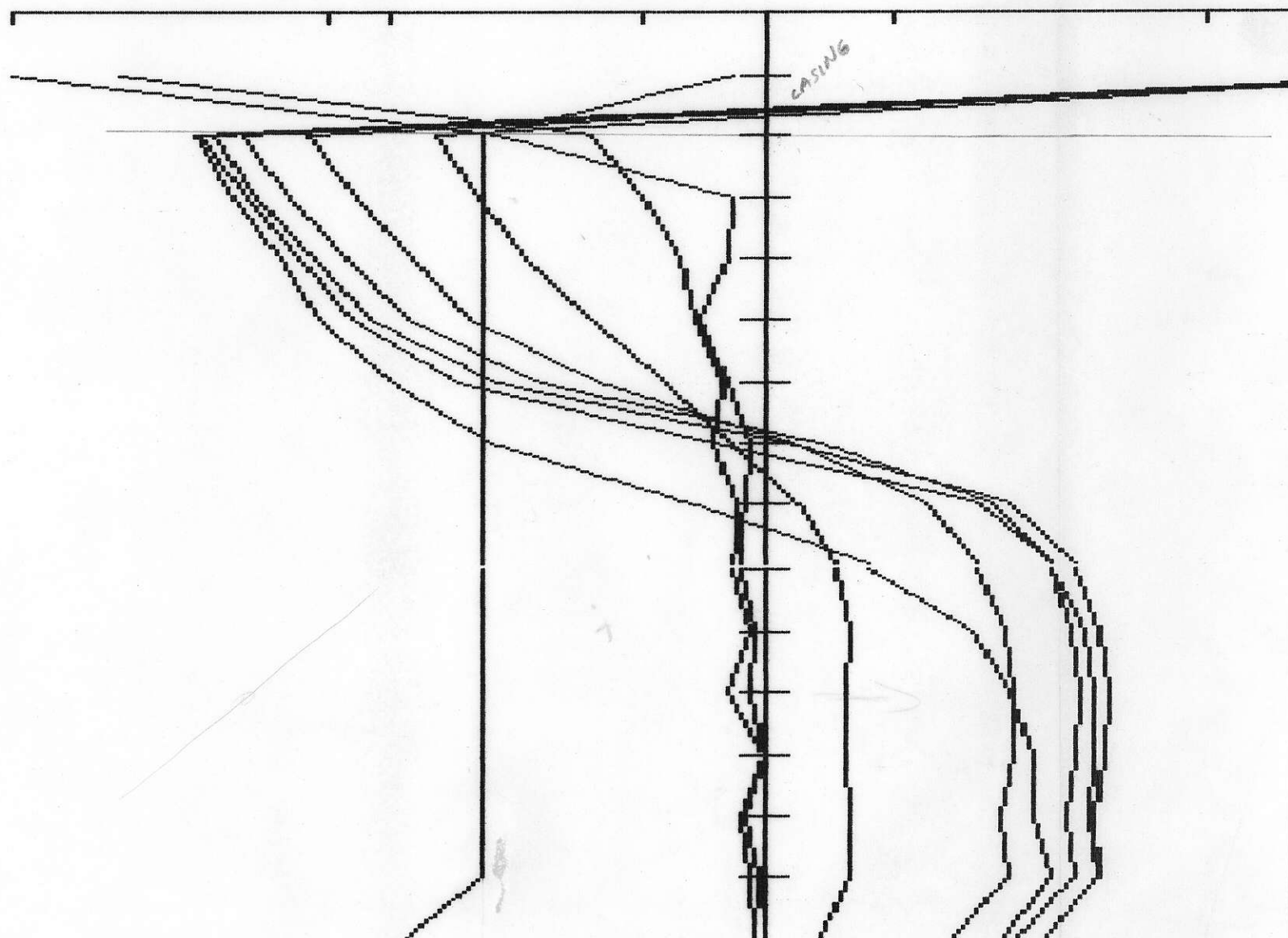
Project: SICKER
Tx Loop: 1
Time Base: 10
ZTS: ZTS: 612

DDH# MTS5

Top of log: 10m
Bottom of log: 150m
Scale: 1:1000



-1000 Primary Pulse +1000
-1000 -100 -10 +10 +100



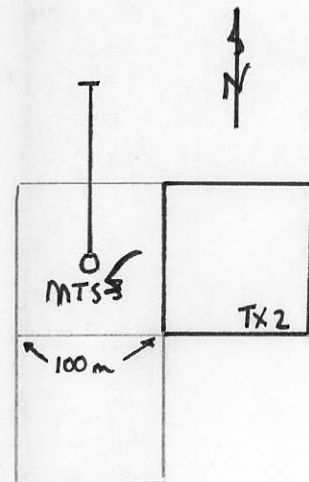
CRONE GEOPHYSICS Ltd.
BOREHOLE-PEM

Client: CFC
Date: 60/7 1:65
Grid:
Gain: 250
Ramp Time: 1.5

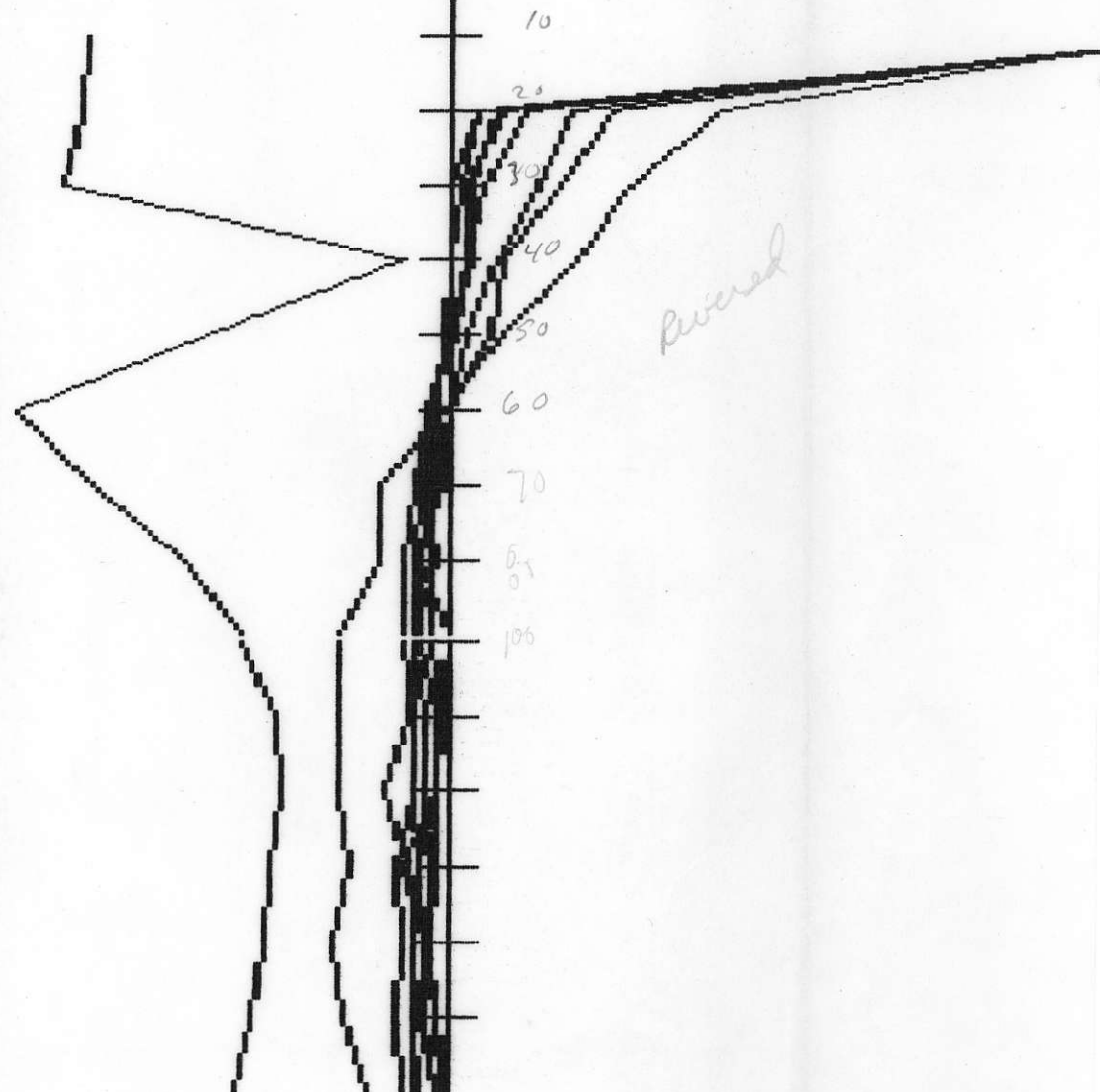
Project: SICKER
Tx Loop: 2
Time Base: 10
ZTS: ZTS: 612

DDH# 5

Top of log: 10m
Bottom of log: 150m
Scale: 1:1000



-1000 Primary Pulse +1000
-1000 -100 -10 +10 +100



CRONE GEOPHYSICS Ltd.
BOREHOLE-PEM

Client: CFC
Date: 60/7 1:75
Grid:
Gain: 250
Ramp Time: 1.

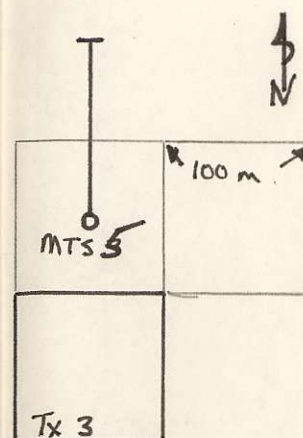
Project: SICKER

Tx Loop: 3
Time Base: 10
ZTS: ZTS: 613

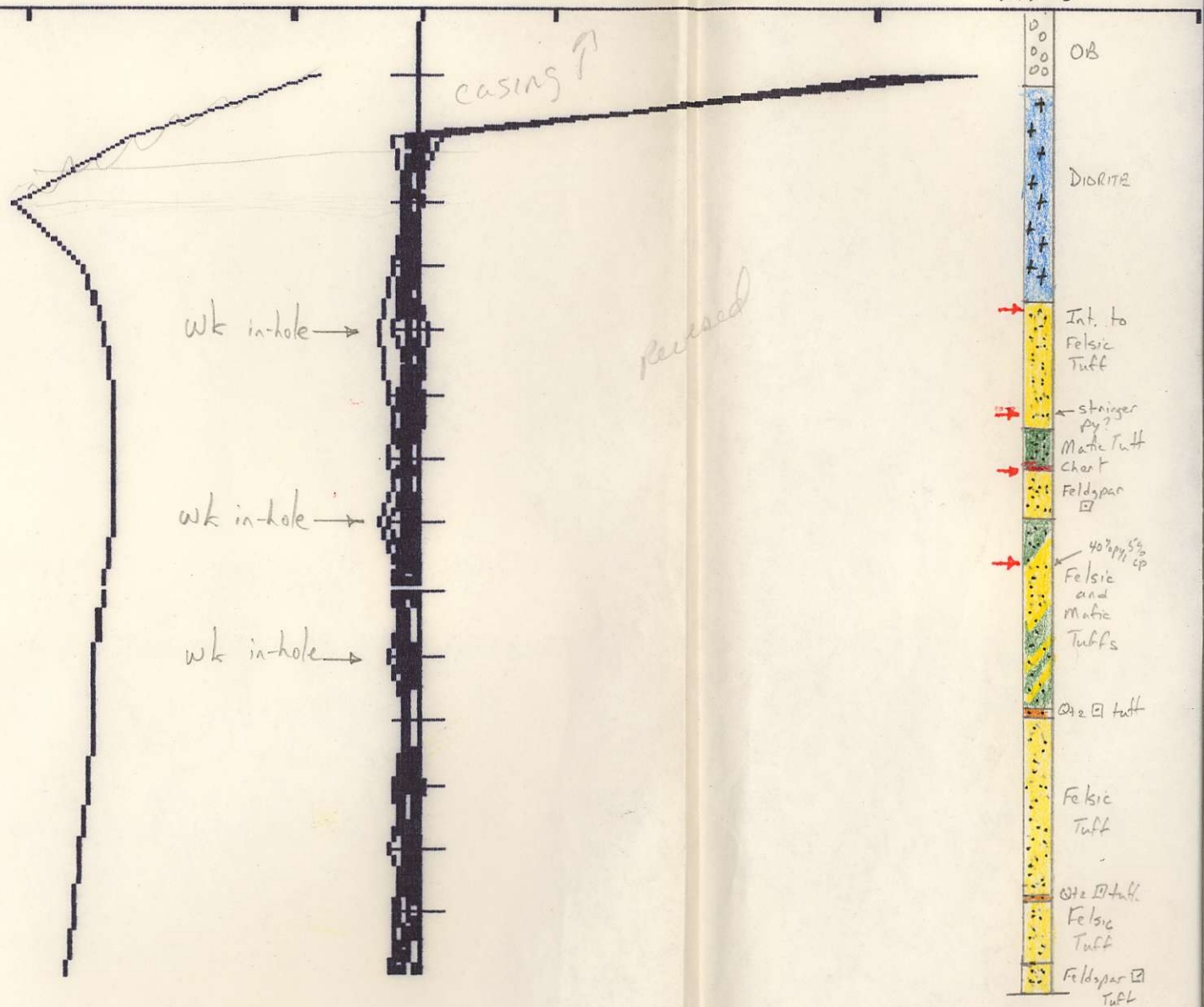
DDH# 5

Top of log: 10m
Bottom of log: 150m
Scale: 1:1000

Downhole Sign: positive



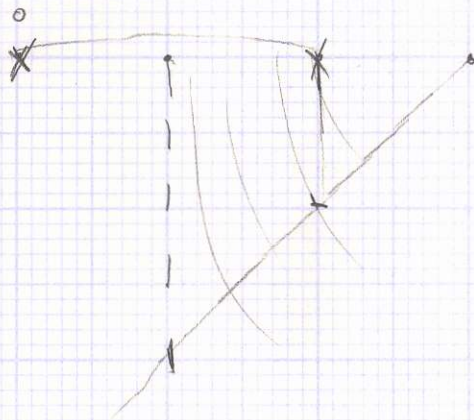
-1000 Primary Pulse +1000
-1000 -100 -10 +10 +100 MTS +10



APPENDICES

1 PEM DATA

~~2 DEEPEM DATA~~



CRONE GEOPHYSICS Ltd.
BOREHOLE PEM

File: MTS1

Client: CFC
Date-time: 60/5 1:62
DDH#: MTS1
Tx LOOP: 1
Gain: 250

Project: SICKER

ZTS: 610
Time Base: 10

DEPTH	Ch.1	Ch.2	Ch.3	Ch.4	Ch.5	Ch.6	Ch.7	Ch.8	PP	GAIN
20m	-10.2	-7.4	-4.7	-3.1	-1.9	-2.1	-0.8	-0.4	226	0
30m	-9.1	-7.3	-4.4	-3.4	-1.9	-2.4	-1.2	-0.4	241	0
40m	-10.0	-6.8	-4.8	-3.0	-1.9	-1.6	-1.1	-0.9	249	0
50m	-10.9	-7.0	-4.1	-3.1	-1.5	-1.8	-1.6	-0.5	253	0
60m	-11.4	-8.0	-4.5	-3.2	-1.8	-1.2	-1.3	0.4	267	0
70m	-11.9	-7.6	-4.2	-3.1	-1.9	-1.5	-1.5	-0.7	259	0
80m	-11.2	-7.3	-4.3	-3.2	-1.7	-1.7	-1.0	-0.6	260	0
90m	-11.3	-8.2	-4.6	-3.2	-1.8	-1.9	-1.2	-0.4	279	0
100m	-11.3	-7.8	-4.3	-3.2	-1.7	-1.7	-0.8	-0.5	272	0
110m	-10.7	-7.6	-4.2	-3.1	-1.5	-1.8	-1.3	-0.4	281	0
120m	-9.8	-8.0	-4.2	-3.3	-1.6	-1.7	-1.1	-0.6	281	0
130m	-10.4	-7.5	-4.5	-2.9	-1.6	-1.0	-1.3	-0.1	275	0
140m	-10.5	-7.6	-4.2	-2.8	-1.8	-1.8	-1.1	0.0	290	0
150m	-11.0	-7.6	-4.5	-3.2	-1.5	-1.5	-1.2	-0.8	275	0
160m	-12.5	-8.7	-5.0	-3.4	-2.0	-1.8	-1.2	-0.7	278	0
170m	-12.3	-8.2	-4.5	-3.0	-1.6	-1.6	-1.1	-0.4	284	0

CRONE GEOPHYSICS Ltd.
BOREHOLE PEM

File: MTS1A

Client: CFC
Date-time: 60/5 1:70
DDH#: MTS1A
Tx LOOP: 1
Gain: 500

Project: SICKER

ZTS: 611
Time Base: 10

DEPTH	Ch.1	Ch.2	Ch.3	Ch.4	Ch.5	Ch.6	Ch.7	Ch.8	PP	GAIN
20m	-18.3	-13.4	-7.8	-4.9	-2.9	-2.0	-1.2	0.1	435	0
30m	-16.2	-13.8	-7.8	-5.2	-3.4	-2.4	-1.4	-1.0	451	0
40m	-17.1	-13.5	-7.8	-4.4	-3.1	-2.6	-1.1	-0.5	458	0
50m	-18.6	-13.2	-7.0	-5.1	-3.1	-2.8	-2.1	-0.3	468	0
60m	-19.4	-14.6	-8.0	-4.8	-3.1	-2.6	-1.4	-0.2	478	0
70m	-19.6	-13.9	-7.8	-4.4	-3.0	-2.6	-1.0	-0.8	470	0
80m	-20.2	-13.8	-7.4	-5.0	-2.5	-3.0	-1.2	-0.4	469	0
90m	-19.5	-14.6	-7.8	-5.0	-2.7	-2.3	-1.5	0.2	482	0
100m	-19.7	-14.5	-7.7	-5.9	-2.7	-1.9	-0.5	-0.2	487	0
110m	-17.9	-13.9	-7.6	-4.6	-2.7	-1.9	-1.1	-1.3	501	0
120m	-17.3	-13.1	-7.4	-4.9	-2.7	-2.7	-2.1	-1.0	496	0
130m	-18.2	-13.9	-7.5	-5.1	-2.6	-1.7	-1.1	-0.3	489	0
140m	-19.5	-14.5	-7.7	-5.2	-2.4	-1.9	-1.9	-0.1	488	0
150m	-21.0	-15.2	-8.1	-4.8	-3.2	-2.8	-1.8	-0.5	473	0
160m	-21.6	-15.4	-8.2	-5.2	-2.5	-2.7	-2.1	-0.7	479	0
170m	-22.6	-15.8	-8.1	-5.0	-3.0	-2.9	-2.1	-0.4	477	0

CRONE GEOPHYSICS Ltd.
BOREHOLE PEM

File: MTS2

Client: CFC	Project: SICKER
Date-time: 60/5 1:84	
DDH#: MTS2	
Tx LOOP: 1	ZTS: 620
Gain: 250	Ramp Time: 1.5
	Time Base: 10

DEPTH	Ch.1	Ch.2	Ch.3	Ch.4	Ch.5	Ch.6	Ch.7	Ch.8	PP	GAIN
20m	-13.0	-7.5	-4.0	-2.8	-1.3	-1.7	-1.0	-0.1	383	0
30m	-12.2	-6.6	-3.7	-3.1	-1.3	-1.9	-1.3	-0.2	418	0
40m	-11.9	-7.9	-3.4	-2.5	-2.1	-1.3	-1.0	-0.4	437	0
50m	-10.9	-7.6	-4.3	-2.7	-1.3	-1.6	-0.8	-0.2	465	0
60m	-9.2	-7.2	-4.0	-2.5	-1.6	-1.6	-1.2	0.3	486	0
70m	-8.8	-7.2	-4.0	-2.8	-1.4	-1.3	-1.2	0.2	508	0
80m	-9.8	-7.9	-4.3	-3.3	-1.6	-1.7	-1.1	0.2	535	0
90m	-8.6	-7.2	-4.4	-2.4	-1.4	-1.6	-1.2	0.1	542	0
100m	-10.7	-7.9	-4.4	-2.8	-1.4	-1.8	-1.1	-0.4	553	0
110m	-10.1	-7.0	-2.6	-1.4	-3.0	-2.8	3.1	12.0	546	0
120m	-10.7	-7.6	-3.9	-2.5	-1.0	-1.4	-0.8	-0.3	571	0
130m	-11.1	-7.7	-3.8	-2.5	-1.1	-1.5	-1.2	-0.2	568	0
140m	-13.8	-9.0	-4.7	-2.5	-1.7	-1.6	-0.8	0.5	570	0
150m	-14.0	-9.3	-4.5	-2.8	-1.3	-1.6	-0.5	0.8	567	0
160m	-15.1	-9.2	-4.3	-2.7	-1.1	-1.1	-0.2	0.9	561	0
170m	-15.8	-9.7	-4.2	-3.3	-1.3	-1.7	-0.8	0.4	546	0
180m	-16.1	-9.5	-4.3	-2.8	-0.8	-0.7	-2.0	0.2	539	0
190m	-17.3	-9.7	-4.1	-2.7	-1.1	-1.5	-1.2	-0.5	527	0
200m	-16.8	-9.7	-4.7	-2.8	-0.9	-1.1	-0.2	0.6	511	0
210m	-16.9	-10.1	-4.2	-3.1	-1.1	-1.6	-0.8	0.2	495	0
220m	-16.4	-10.1	-4.5	-2.8	-1.5	-1.6	-0.6	0.5	478	0
230m	-17.3	-10.2	-4.4	-2.9	-1.2	-1.7	-1.2	0.2	258	0
240m	-16.7	-10.3	-5.1	-2.7	-1.3	-1.3	-1.1	-0.1	437	0
250m	-17.4	-10.3	-4.8	-2.9	-1.5	-0.8	-1.3	0.2	424	0

CRONE GEOPHYSICS Ltd.
BOREHOLE PEM

File: B4CMTS

Client: CFC	Project: SICKER
Date-time: 60/6 1:74	
DDH#: MTS4	
Tx LOOP: 1	ZTS: 616
Gain: 250	Ramp Time: 1.5
	Time Base: 10

DEPTH	Ch. 1	Ch. 2	Ch. 3	Ch. 4	Ch. 5	Ch. 6	Ch. 7	Ch. 8	PP	GAIN
10m	134.5	73.9	48.9	34.1	23.7	13.5	8.2	6.2	228	0
20m	166.8	92.4	60.6	41.9	28.8	16.2	10.8	7.5	228	0
30m	202.8	108.2	70.8	48.3	33.2	18.9	11.1	9.0	224	0
40m	174.2	96.0	62.8	43.5	29.6	16.6	10.2	8.2	228	0
50m	121.7	64.2	42.4	29.0	19.3	11.8	6.7	4.8	225	0
60m	72.7	40.3	26.0	17.6	13.3	7.2	3.9	2.8	227	0
70m	47.2	26.1	16.6	11.6	8.3	5.6	3.2	4.5	227	0
80m	32.5	17.5	11.4	7.4	6.1	3.1	1.3	2.7	225	0
90m	23.6	13.0	8.4	5.9	4.1	2.3	1.4	2.0	223	0
100m	18.2	9.9	6.4	4.0	2.2	2.1	0.9	2.9	209	0
110m	14.6	7.4	4.9	3.0	2.5	1.0	-0.4	1.6	187	0
120m	14.4	5.8	3.9	2.2	1.8	1.0	0.4	1.9	79	0
130m	10.4	4.9	2.9	1.5	1.5	0.2	-0.8	1.4	865	0
140m	8.4	4.3	2.5	1.0	1.3	0.0	-0.3	1.5	706	0
150m	7.4	3.6	2.0	1.0	1.0	0.4	-0.7	1.9	586	0
160m	7.4	3.0	1.7	0.7	1.0	0.7	-0.4	0.6	474	0
170m	6.3	2.7	1.2	0.1	0.7	0.3	-0.7	1.0	408	0
175m	5.9	2.3	1.1	-0.7	-0.5	-0.6	0.0	1.3	376	0

CRONE GEOPHYSICS Ltd.
BOREHOLE FEM

File:BS4MTS

Client: CFC	Project: SICKER
Date-time: 60/6 1:81	
DDH#: MTS4	
Tx LOOP: 2	ZTS: 618
Gain: 250	Ramp Time: 1.5
	Time Base: 10

DEPTH	Ch.1	Ch.2	Ch.3	Ch.4	Ch.5	Ch.6	Ch.7	Ch.8	PP	GAIN
10m	10.2	5.7	3.7	2.3	1.9	0.9	0.7	0.5	105	0
20m	4.4	2.6	2.2	0.5	1.3	-0.1	-0.9	1.2	586	0
30m	2.0	1.5	-0.6	-0.5	0.7	-0.8	0.2	-0.2	239	0
40m	-1.3	0.7	-0.1	-1.9	1.5	-1.5	0.2	0.0	73	0
50m	-1.4	0.2	-0.6	-0.8	0.3	-0.8	-0.4	1.2	-13	0
60m	-1.8	-0.5	-0.4	-0.9	-0.4	-0.2	0.7	0.0	-75	0
70m	-3.4	-0.8	-0.4	-1.1	-0.4	0.1	-0.8	-1.3	-96	0
80m	-1.8	-0.5	-0.9	-1.0	0.2	-1.4	0.1	-0.2	118	0
90m	-2.1	-0.5	-0.4	-0.8	-0.2	0.1	-1.5	-0.8	123	0
100m	-2.2	-0.1	-0.4	-0.7	-0.7	-0.2	-0.5	-0.2	125	0
110m	-3.1	-0.2	-0.5	-1.1	-0.9	-1.1	-0.8	-0.1	114	0
120m	-2.9	-0.2	-0.2	-0.8	0.0	-0.7	-0.2	-0.5	111	0
130m	-3.2	-0.5	-0.5	-1.5	0.1	-1.2	-0.6	-0.1	106	0
140m	-3.3	-0.4	-0.5	-0.5	-0.3	-0.2	0.1	-0.1	100	0
150m	-3.5	-0.6	-0.6	-1.0	-0.2	-0.5	-0.3	-0.3	-98	0
160m	-3.7	-0.5	-0.3	-0.6	0.2	-0.6	-0.9	-1.5	-88	0
170m	-3.5	-0.3	-0.5	-1.2	-0.5	-0.9	-0.2	-0.2	-82	0

CRONE GEOPHYSICS Ltd.
BOREHOLE PEM

File:BE4MTS

Client: CFC
Date-time: 60/6 6:06
DDH#: MTS4
Tx LOOP: 3
Gain: 250

Project: SICKER

ZTS: 618
Time Base: 10

Ramp Time: 1.5

DEPTH	Ch.1	Ch.2	Ch.3	Ch.4	Ch.5	Ch.6	Ch.7	Ch.8	PP	GAIN
10m	6.7	3.3	1.6	1.1	0.9	-0.2	0.3	0.8	140	0
20m	8.8	4.6	3.3	1.9	1.8	0.0	-0.8	1.3	957	0
30m	4.6	3.7	2.2	1.0	1.6	-0.6	0.3	0.2	655	0
40m	4.7	2.2	0.5	0.5	1.5	0.2	-0.4	0.3	428	0
50m	-0.5	1.4	1.2	-0.3	0.7	-0.6	-1.2	-0.2	200	0
60m	-0.8	1.2	0.0	-1.0	-0.2	-1.1	0.2	-0.2	62	0
70m	-2.2	0.3	0.3	-1.0	0.3	-0.2	0.0	0.5	-57	0
80m	-2.6	-0.2	-0.8	-1.0	-0.1	-0.8	0.0	-0.5	129	0
90m	-2.3	-0.4	-1.0	-0.9	-1.2	-0.7	-0.8	-0.1	172	0
100m	-3.7	-0.2	-0.4	-1.6	-0.6	-0.8	-0.5	0.4	188	0
110m	-3.1	-0.5	-0.4	-0.7	0.1	-0.9	-1.0	-0.5	204	0
120m	-3.7	-1.2	-0.2	-0.9	-0.5	-0.9	-0.2	0.7	192	0
130m	-3.3	-0.4	-0.5	-0.3	0.3	-0.4	-0.1	-0.4	186	0
140m	-3.8	-0.1	-0.2	-0.6	0.1	-0.5	-0.4	-0.3	177	0
150m	-4.1	-0.7	-0.5	-0.9	-0.2	-0.7	-0.3	0.0	167	0
160m	-4.1	-0.5	-0.7	-0.7	-0.2	-0.7	-0.4	0.3	154	0

CRONE GEOPHYSICS Ltd.
BOREHOLE PEM

File: BW4MTS

Client: CFC
Date-time: 60/7 1:23
DDH#: MTS4
Tx LOOP: 4
Gain: 250

Ramp Time: 1.5

Project: SICKER

ZTS: 616
Time Base: 10

DEPTH	Ch.1	Ch.2	Ch.3	Ch.4	Ch.5	Ch.6	Ch.7	Ch.8	PP	GAIN
10m	6.2	3.0	1.7	2.2	0.6	0.5	-1.0	-0.7	789	0
20m	8.4	4.4	1.8	1.5	3.1	-0.2	0.4	0.5	804	0
30m	4.2	3.6	3.1	1.5	1.4	0.4	-1.0	0.7	728	0
40m	5.2	2.5	1.5	1.9	1.0	0.0	1.3	0.8	595	0
50m	2.3	1.9	2.3	0.9	0.9	0.6	0.5	0.5	426	0
60m	1.3	1.4	1.3	0.2	1.0	-0.5	0.0	0.0	269	0
70m	0.3	0.2	0.3	-0.2	-0.9	-1.2	-0.6	-0.8	128	0
80m	-2.5	0.0	0.9	-1.0	-0.6	-1.0	-1.1	-0.6	4	0
90m	-2.1	-0.4	-0.4	-0.7	-0.6	-0.4	-0.7	-1.0	-76	0
100m	-2.4	-0.7	-0.4	-1.3	-0.7	-1.3	-0.9	-0.9	109	0
110m	-2.2	-0.3	-0.7	-1.0	-0.1	-1.2	-0.9	-0.9	139	0
120m	-2.3	-0.4	-0.9	-1.1	-0.2	-1.0	0.0	-0.9	158	0
130m	-3.2	-0.8	-0.8	-1.2	-0.4	-1.0	-0.8	-1.2	166	0
0m	-3.3	-0.7	-0.8	-1.2	-0.5	-1.2	-0.6	-0.5	171	0
150m	-3.2	-0.7	-0.7	-0.8	0.1	-0.9	-0.8	-0.8	168	0
160m	-3.7	-0.7	-0.4	-0.7	0.3	-0.4	0.3	-0.6	162	0
170m	-3.5	-0.7	-0.8	-1.1	-0.6	-0.4	-0.3	-0.8	155	0

CRONE GEOPHYSICS Ltd.
BOREHOLE PEM

File:BN4MTS

Client: CFC	Project: SICKER
Date-time: 60/7 1:35	
DDH#: MTS4	
Tx LOOP: 5	ZTS: 618
Gain: 250	Ramp Time: 1.5
	Time Base: 10

DEPTH	Ch.1	Ch.2	Ch.3	Ch.4	Ch.5	Ch.6	Ch.7	Ch.8	PP	GAIN
10m	41.3	22.4	15.4	11.1	8.6	4.9	2.0	2.3	213	0
20m	75.0	40.5	28.1	19.1	13.8	8.3	4.1	4.0	225	0
30m	108.8	60.7	42.1	28.6	19.7	12.1	7.0	4.2	228	0
40m	102.0	56.0	37.5	26.2	18.5	10.1	6.3	4.8	228	0
50m	54.5	30.3	19.5	13.4	10.7	4.5	3.4	4.3	222	0
60m	16.9	9.4	5.6	4.0	3.2	0.8	0.5	2.4	131	0
70m	-6.7	-2.6	-2.1	-2.6	-0.6	-1.2	-0.7	-0.5	976	0
80m	-19.6	-8.8	-6.5	-5.2	-2.2	-2.4	-1.8	-3.5	259	0
90m	-26.5	-13.0	-9.1	-6.9	-4.3	-2.9	-1.7	-0.1	262	0
100m	-32.6	-16.4	-11.0	-8.1	-5.3	-3.8	-1.5	-0.8	262	0
110m	-37.4	-18.8	-13.3	-9.1	-5.3	-4.3	-2.8	-1.1	261	0
120m	-38.9	-19.4	-13.2	-9.3	-5.6	-4.0	-2.3	-2.5	261	0
130m	-40.3	-20.1	-13.5	-9.5	-5.8	-3.9	-2.2	-1.1	261	0
140m	-37.7	-18.1	-12.0	-8.5	-5.0	-3.7	-2.6	-2.0	261	0
150m	-33.9	-15.9	-10.5	-7.5	-4.4	-3.4	-2.9	-0.7	261	0
160m	-29.3	-13.4	-8.7	-6.1	-3.7	-2.9	-1.9	-0.2	261	0
170m	-24.5	-10.5	-6.9	-5.0	-2.7	-2.2	-1.6	-0.5	261	0

CRONE GEOPHYSICS Ltd.
BOREHOLE PEM

File:BC4MTS

Client: CFC
Date-time: 60/7 1:64
DDH#: MTS5
Tx LOOP: 1
Gain: 250

Project: SICKER

ZTS: 612
Time Base: 10

Ramp Time: 1.5

DEPTH	Ch.1	Ch.2	Ch.3	Ch.4	Ch.5	Ch.6	Ch.7	Ch.8	PP	GAIN
10m	861.1	1171.7	1450.3	1450.7	1449.7	1279.6	-455.5	-1255.0	917	0
20m	-264.2	-249.0	-231.0	-184.1	-113.6	-44.2	-13.9	-27.8	260	0
30m	-196.7	-179.6	-164.3	-131.4	-81.4	-32.6	-9.6	-2.3	260	0
40m	-140.4	-121.2	-110.5	-87.4	-53.2	-23.0	-6.6	-2.9	260	0
50m	-104.6	-83.2	-72.5	-55.5	-35.4	-14.1	-5.3	-5.1	261	0
60m	-60.4	-37.5	-28.7	-20.6	-13.2	-7.6	-3.1	-2.8	261	0
70m	-29.2	-4.1	1.9	4.5	2.3	-2.4	-4.1	-0.9	261	0
80m	-5.9	19.1	24.9	21.3	13.2	2.7	-2.1	-1.3	261	0
90m	8.5	34.1	39.7	33.3	19.1	5.8	-1.5	-2.5	261	0
100m	18.5	42.4	47.6	38.5	23.4	6.8	-0.4	-1.1	261	0
110m	24.2	46.2	50.6	40.9	25.5	6.5	-1.0	-2.7	261	0
120m	28.8	46.4	50.0	40.4	25.8	6.7	0.2	0.0	260	0
130m	29.7	44.5	45.9	37.4	23.3	7.0	-1.2	-1.7	260	0
140m	33.9	47.5	47.9	40.2	24.3	6.9	-0.2	-1.0	259	0
150m	23.7	32.3	32.4	26.4	16.4	4.5	-0.5	-0.4	62	0

CRONE GEOPHYSICS Ltd.
BOREHOLE PEM

File: BE5MTS

Client: CFC	Project: SICKER
Date-time: 60/7 1:65	
DDH#: 5	
Tx LOOP: 2	ZTS: 612
Gain: 250	Ramp Time: 1.5
	Time Base: 10

DEPTH	Ch.1	Ch.2	Ch.3	Ch.4	Ch.5	Ch.6	Ch.7	Ch.8	PP	GAIN
10m	372.5	427.2	477.4	508.2	536.3	562.6	613.2	666.2	224	0
20m	20.4	10.5	8.0	3.7	5.2	2.1	1.9	3.2	211	0
30m	12.0	7.2	5.8	1.2	2.4	1.0	0.1	1.5	163	0
40m	8.5	3.7	3.2	1.8	1.2	0.3	0.1	1.3	909	0
50m	3.6	2.9	1.4	0.1	0.1	0.1	-0.1	0.5	476	0
60m	-0.2	0.3	0.2	-1.4	0.0	-0.9	-0.5	-1.2	73	0
70m	-4.3	-0.3	-0.7	-1.9	-0.8	-1.2	-0.8	-1.5	233	0
80m	-4.2	-2.1	-1.7	-2.8	-1.5	-0.5	-0.9	-2.0	433	0
90m	-6.8	-2.1	-1.9	-2.7	0.1	-2.1	-1.0	-1.7	551	0
100m	-7.1	-2.2	-2.6	-2.1	-0.4	-1.2	-0.1	-0.6	637	0
110m	-6.9	-2.2	-4.1	-1.9	-0.4	-1.3	-0.4	-0.4	646	0
120m	-6.3	-3.2	-2.4	-1.8	-1.5	-1.0	-0.5	-2.9	622	0
130m	-7.2	-2.9	-0.9	-1.9	-1.3	-0.8	-0.9	-1.2	612	0
140m	-6.5	-3.2	-1.9	-2.1	-1.6	-1.2	-0.7	-0.4	584	0
150m	-5.0	-2.9	-2.2	-1.7	-0.7	-0.7	-0.1	0.1	547	0

