

NUGGET
745(1)
(3N+3W)

BRENT I
163(5)

FANG
534(5)
(48+9E)

ROCKY 4
158(4)

PLUM
1665(4)
2N+3E

BANANA
1073(8)
(27+9W)
(48729)

929(5)
(2N+5E)

ROCKY 3
757(4)

EAGLE
1982(7)
4N+4W

FALCON
1983(7)
3N+4E

BOB
1666(4)
53X4E

MT.
PREVOST

Area in Red

RES. AIN & PLACES: L-16 FR. NO. 3, 42, 17 AUG 7: 2142 (5)
NO STAKE

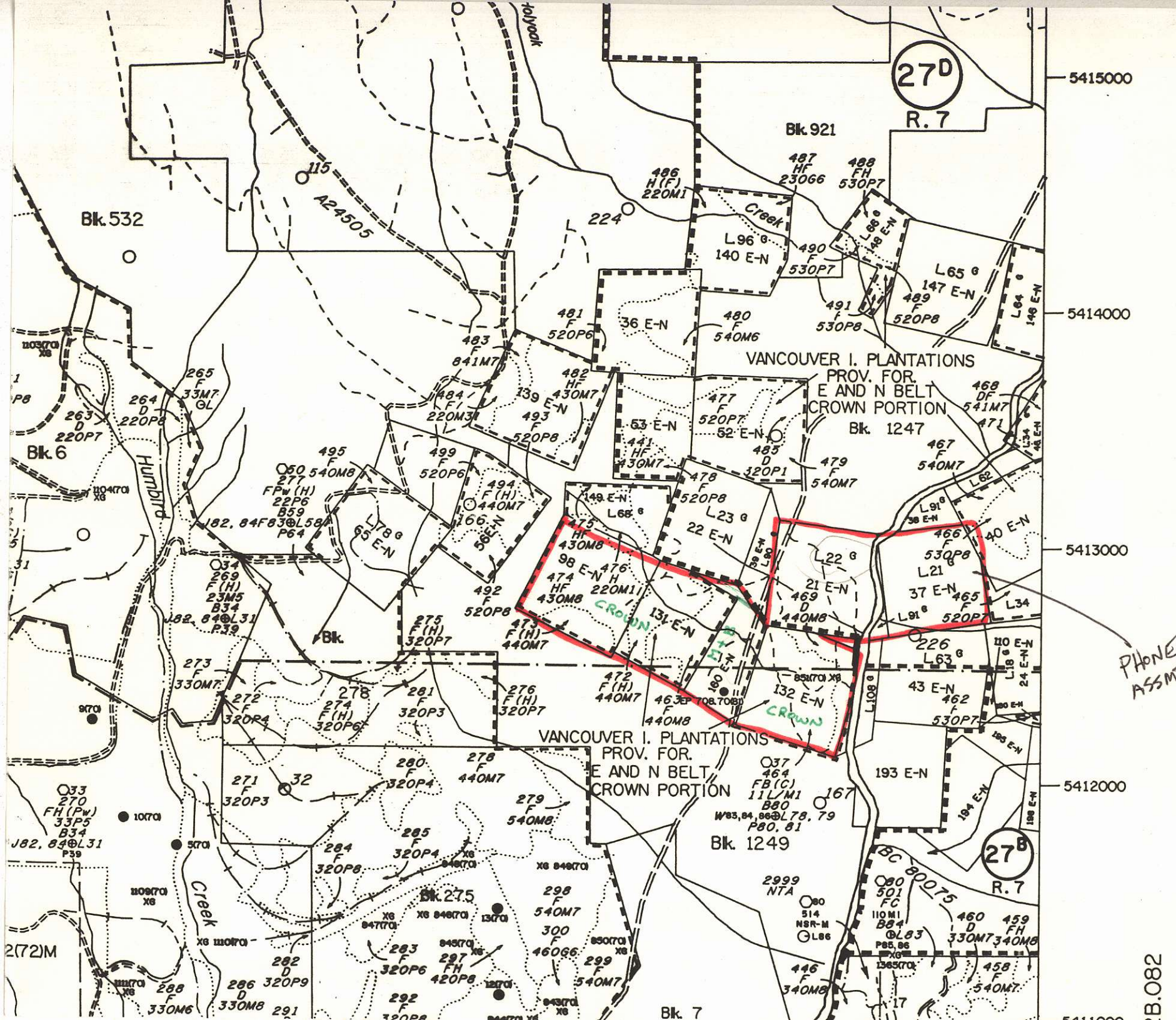
S-1 1677 (5)	S-2 1678 (5)	L7 2062 (12)	L6 2061 (12)	L-9 2082 (2)	L-11 2084 (2)	L-13 2086 (2)	L-15 2088(2)	FR. L 22 227
S-3 1679 (5)	1680 (5)	L5 2060 (12)	L4 2059 (12)	L-8 2081 (2)	L-10 2083 (2)	L-12 2085 (2)	L-14 2087 (2)	L 24 227
S-5 1681 (5)	S-6 1682 (5)	L2 2058(12)	L1 2057(12)	2224(9)	2222(9)	L-20 2220 (9)	L-18 2218(9)	
1683 (5)	S-8 1684 (5)	L3 2056(12)	L-17 2224 (9)	L-21 2221(9)	L-19 2213(9)	L-23 2223(9)		

2225 CLASS A

BET-2 1708 (6)	BET-4 1710 (6)
BET-1	BET-3

Forest
LOOKOUT

3E1/B20 PV LEGAL CORNER POST & TAG NUMBER 9848



AGE CLASS CODES

CODE	LIMITS (years)
1	1-20
2	21-40
3	41-60
4	61-80
5	81-100
6	101-120
7	121-140
8	141-250
9	251+

HEIGHT CLASS CODES

CODE	LIMITS (metres)
1	0-10.4
2	10.5-19.4
3	19.5-28.4
4	28.5-37.4
5	37.5-46.4
6	46.5-55.4
7	55.5-64.4
8	64.5+

STOCKING CLASS CODES

CODE	APPLIES TO	LIMITS
0	all immature *	N.A.
1	all mature *	≥76/ ha, 27.5 cm+ d.b.h.
2	all mature	<76/ ha, 27.5 cm+ d.b.h.
Subclass of 2	3	≥311/ ha, 17.5 cm+ d.b.h. and ≥50% of stems 7.5 cm+ d.b.h. are ≥12.5 cm d.b.h.
	4	<311/ ha, 17.5 cm+ d.b.h. or ≥311/ ha, 17.5 cm+ d.b.h. and <50% of stems 7.5 cm+ d.b.h. are ≥12.5 cm d.b.h.

* All deciduous species; PI; Pa. All coniferous species except PI and Pa.

Immature	1-80 yrs.	1-120 yrs.
Mature	≥81 yrs.	≥121 yrs.

SECONDARY ELEMENTS

- L - Multi-layered stand.
- S - Separate silviculture description is available in the data base.
- V - Veteran component.

QUALIFIERS

- A - Complex stand.
- E - Environmentally sensitive.
- I - Inoperable.

ENVIRONMENTALLY SENSITIVE AREA (E.S.A.) CATEGORIES

CONSTRAINT CLASS	E.S.A. CATEGORY	E.S.A. DESCRIPTION
High	Es	Areas having severe soil and steepness problems.
	Ep	Areas having severe regeneration problems.
	Ea	Areas having severe snow chute and avalanche problems.
	Er	Areas where recreational values are exceptionally high.
	Ew	Areas of critical importance to wildlife.
Moderate	Eh	Areas where water values are exceptionally high.
	E2r	Areas where recreational values are high but less important.
	E2w *	Areas where wildlife values are important but less important.
Nil	E2h	Areas where water values are important but less important.
		Management practices on these lands are subject to consistent with the policies of the Forest Region.

* Important areas for grizzly bears along salmon producing streams and riparian areas.

Fisheries	SYMBOL	STREAM VALUE
	▲	Nil
■	Low	
●	Moderate	
◆	High	

Note: Absence of fisheries symbols indicates information not available.

HISTORY SYMBOLS

CLASS AND SYMBOL	CODE	HISTORY	CLASS AND SYMBOL

PHONE ASSMT

B.082