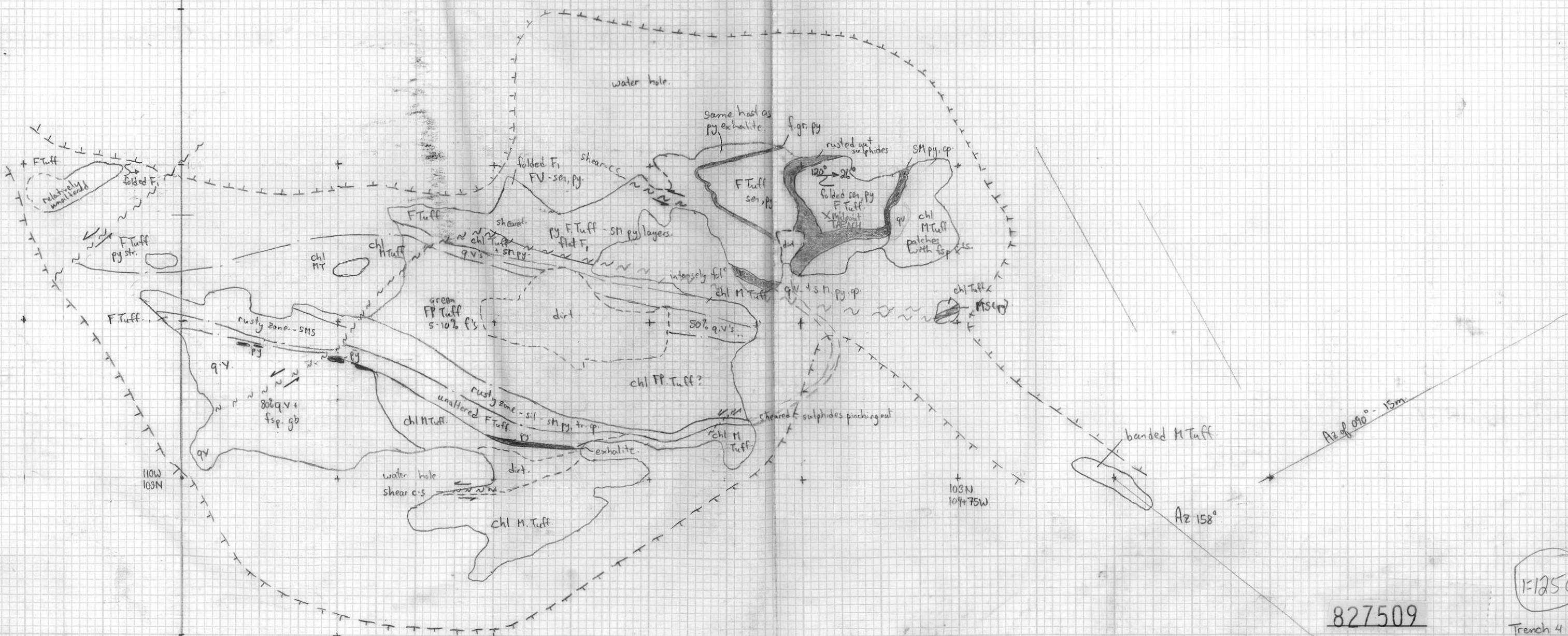


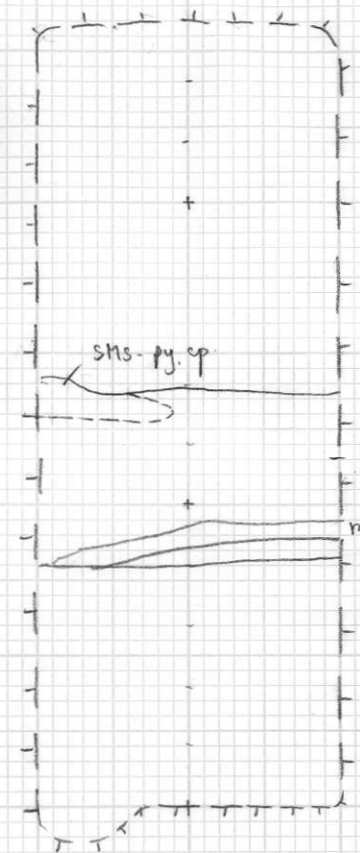
holes 92, 93
 at 21.6 m from L110W, 103150N
 at Az of 327° i.e. NW of str.

hole 7
 at 19.6 m from L110W, 103150N
 at Az of 145° i.e. SE of str.



827509
 Lara 92B/13

1:1250
 Trench 4 Area
 GSW, May 8/90
 CAW 15:20c



py F tuff with chl on folⁿ planes

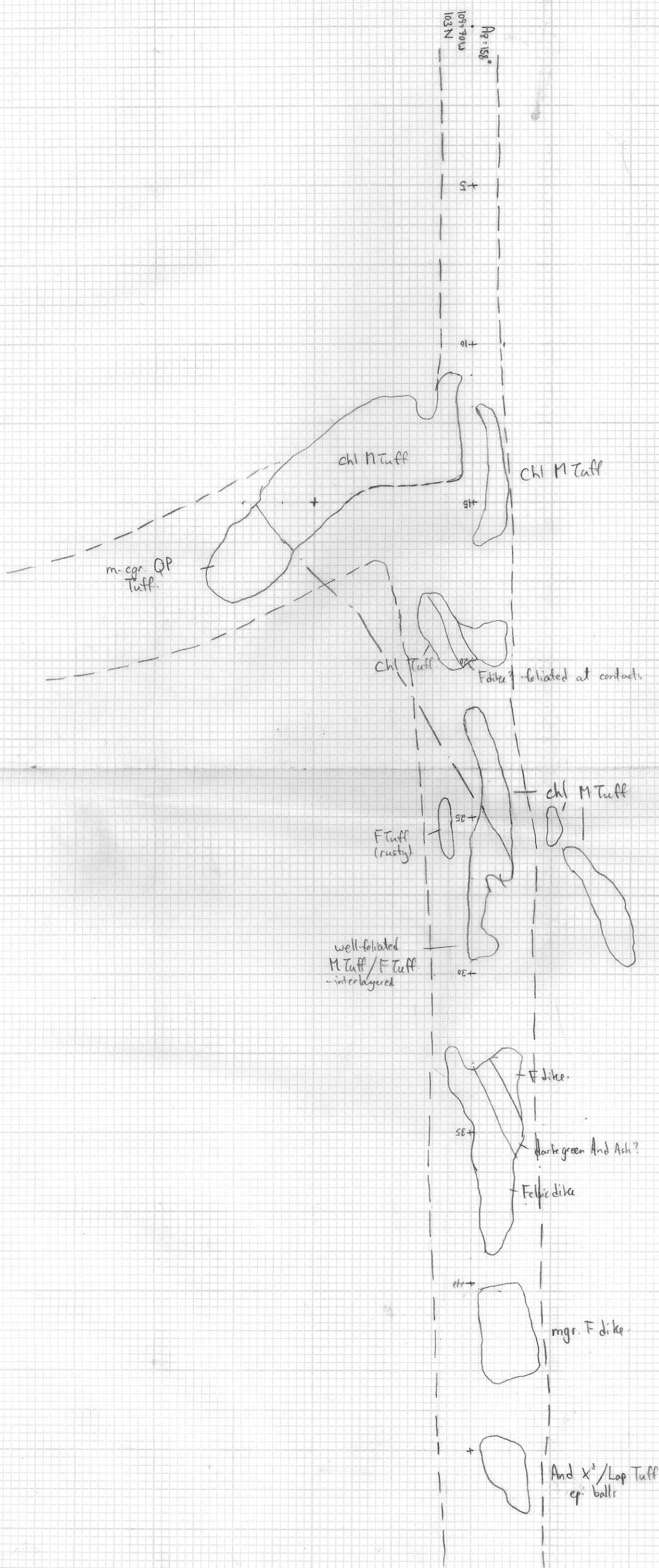
mass py

sns. py. op

Az = 024°

15m. from Tr. 4 103N 109+65W at Az 090

Trench immediately E of Trench 4.



Road to E of Trench 4
May 8/90
GSM