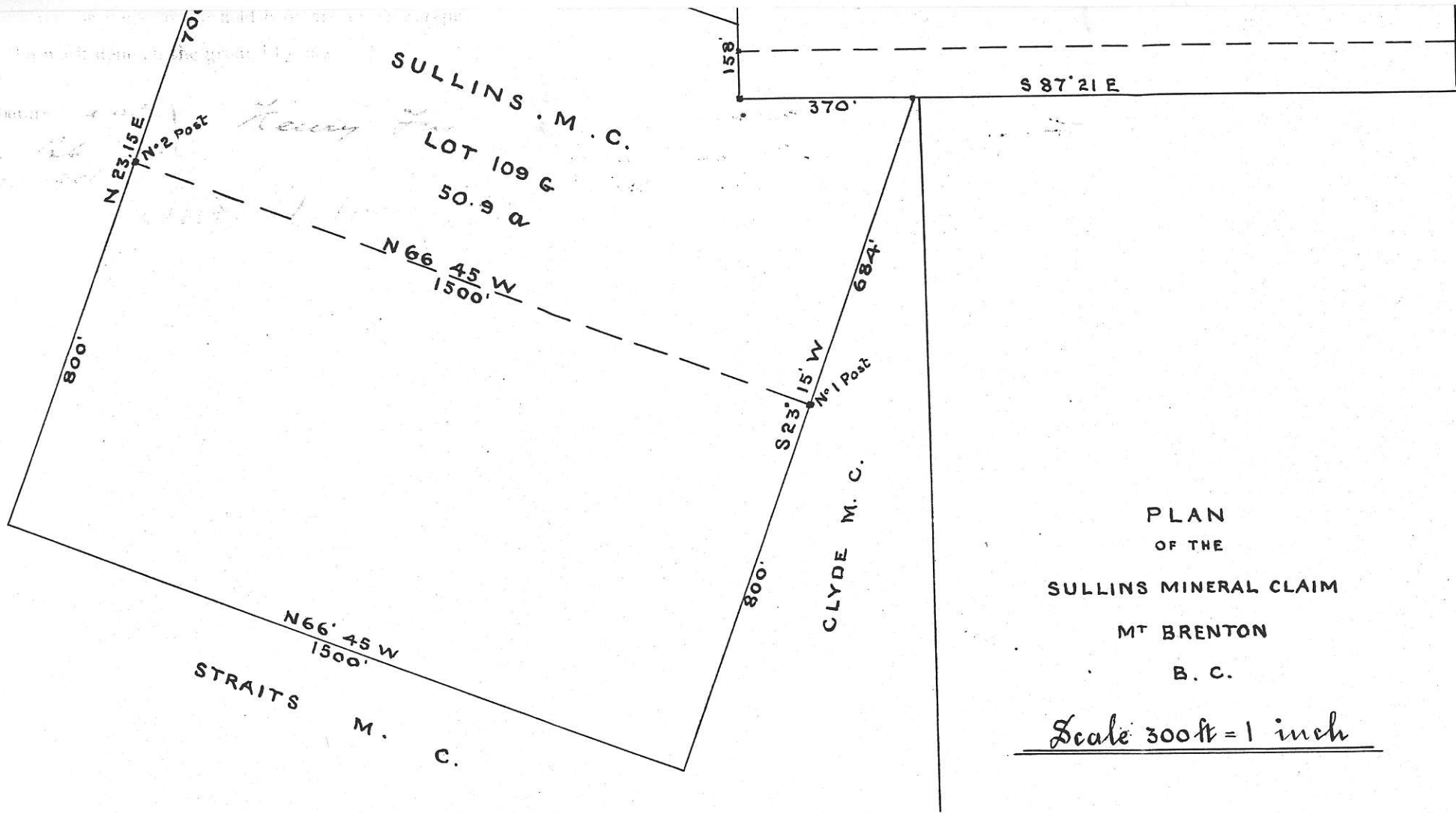


8E1

Dec 13'



PLAN
OF THE
SULLINS MINERAL CLAIM
MT BRENTON
B. C.

Scale 300ft = 1 inch

827493



Var 24.00 E.

of
Pr
m

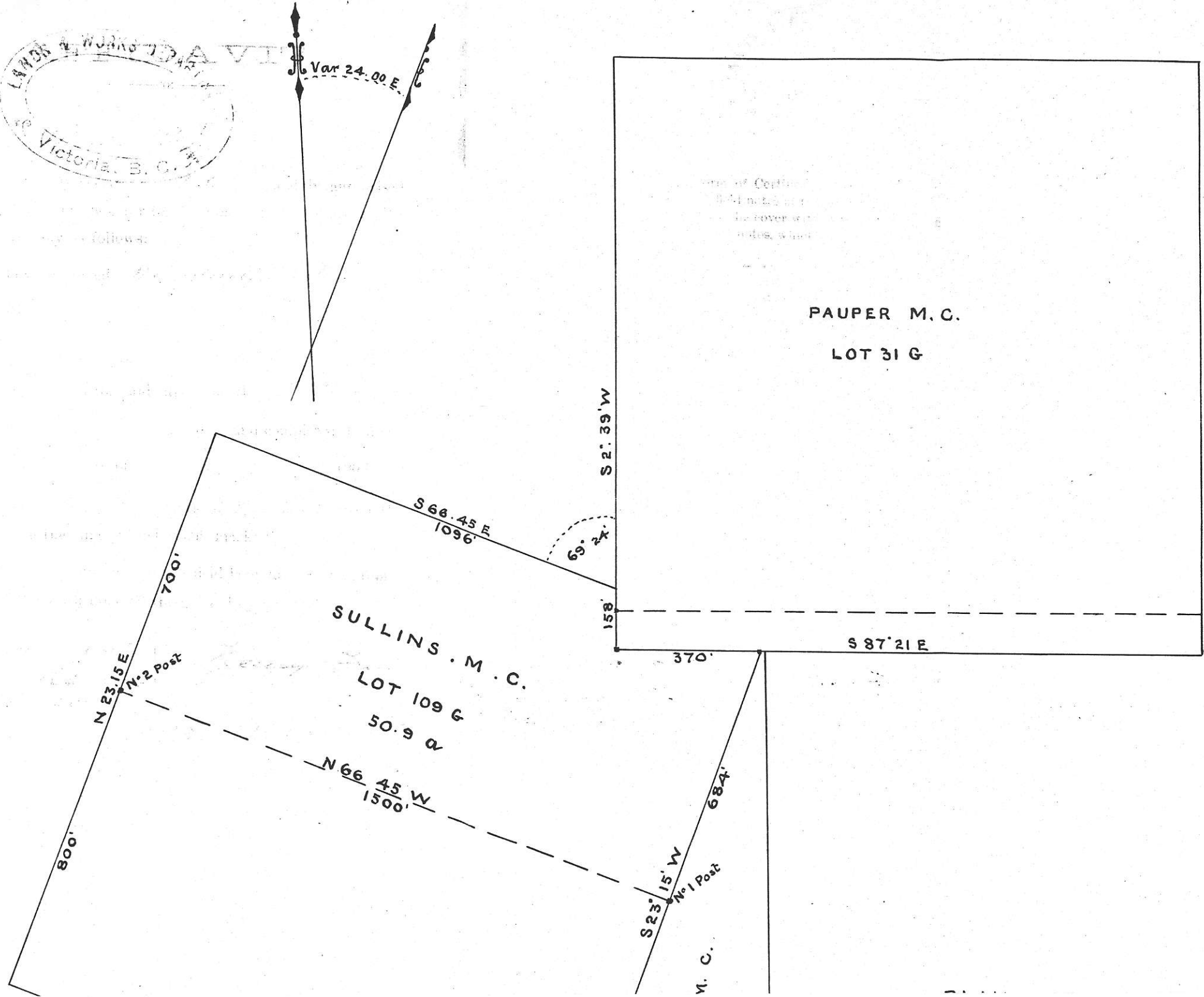
follows:

da

da

ser

Dec 13



PAUPER M. C.

LOT 31 G

SULLINS M. C.

LOT 109 G

50.9 a

N 66° 45' W
1500'

N 23° 15' E
700'

800'

S 2° 39' W
158'

S 87° 21' E
370'

S 23° 15' W
684'

No 1 Post

M. C.

Copy of the

RECORD

Of the Sullivan Mineral Claim.

Located by Lily M. Jewley

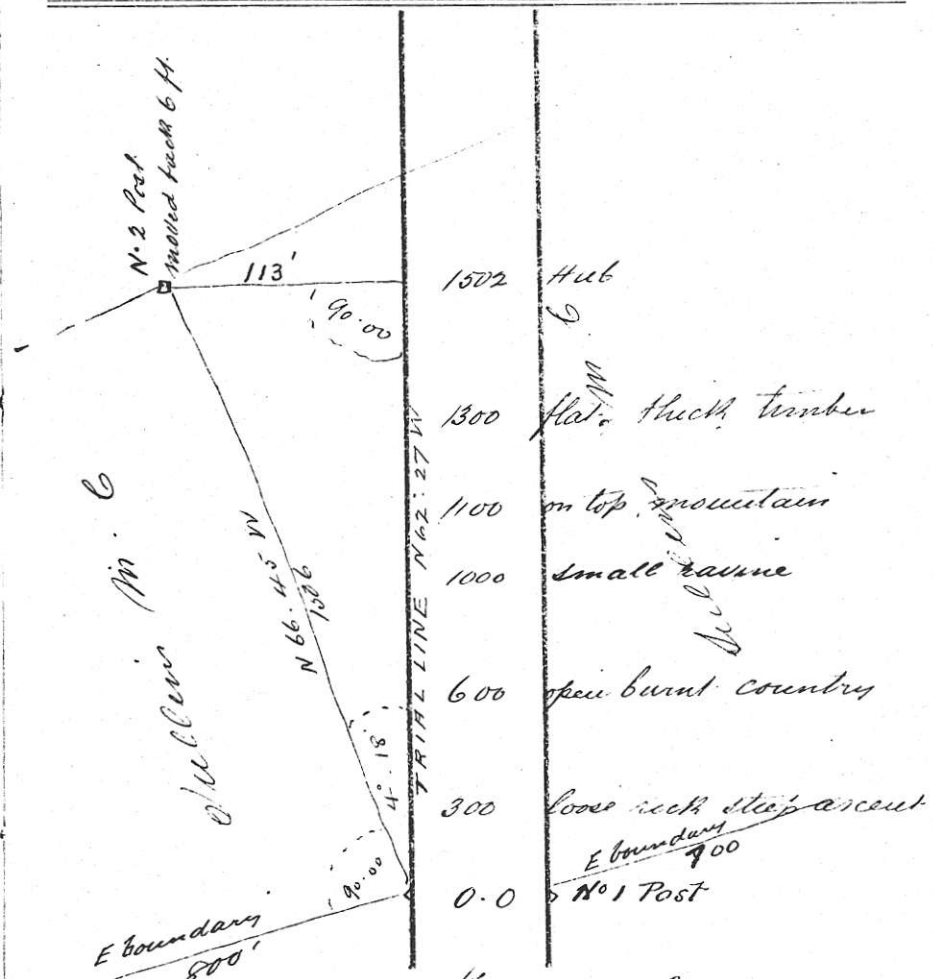
Free Miner's Certificate No. 81093

The Claim is situated on Mount Brenton
about 10 miles west of the E & N R.R.
and in a westerly direction of Westholme

The direction of the Location Line is Westerly
The length of claim is 1500 feet.
And 700 feet lie to the right of Location Line.
And 800 feet lie to the left of Location Line.
The Claim was located on the 15th day of July 1897
Recorded this 5th day of August 1897

Signed W. S. Gore
Mining Recorder.

Sullivan Mineral Claim
Lot No. 109 G West. Ch.emannus District
Location Line Boundary
Bearing N. 66. 45 W. (A.S.T.)



The above line was run the 8th day of July 1901

H. Fry P. S.

Sullins

Mineral Claim

Lot No. 109 E West Chemainus District

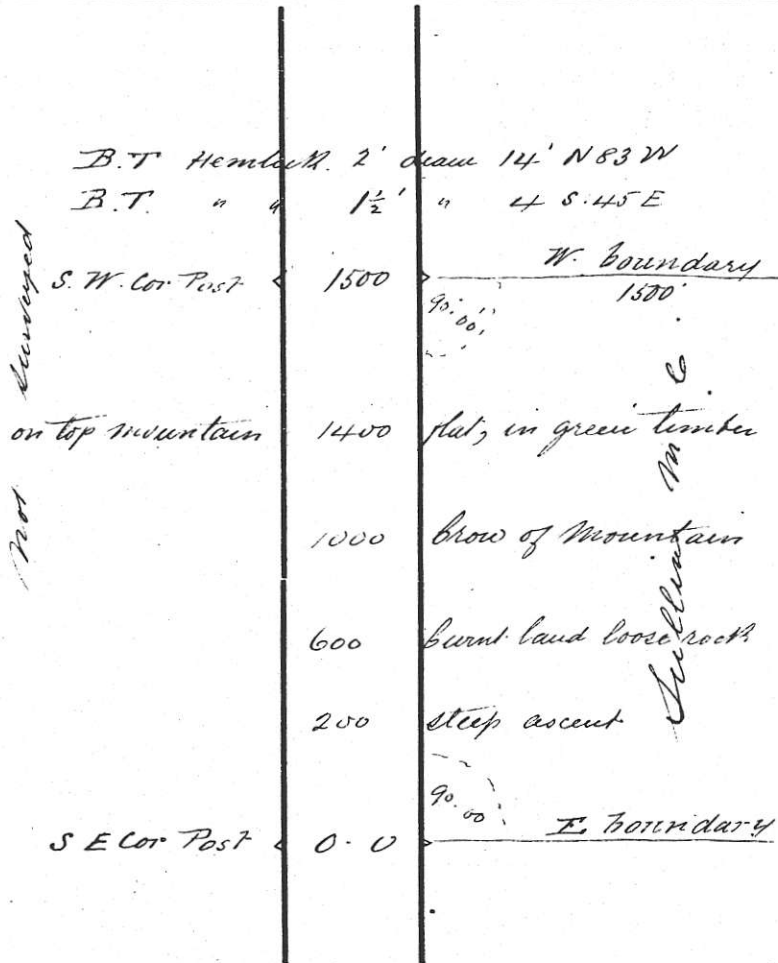
South

Boundary

Bearing N 66° 45' W (Ast)

Charles M. C

Not surveyed



The above line was run the 8th day of July 1901
H. Fry P.L.S.

Sullins

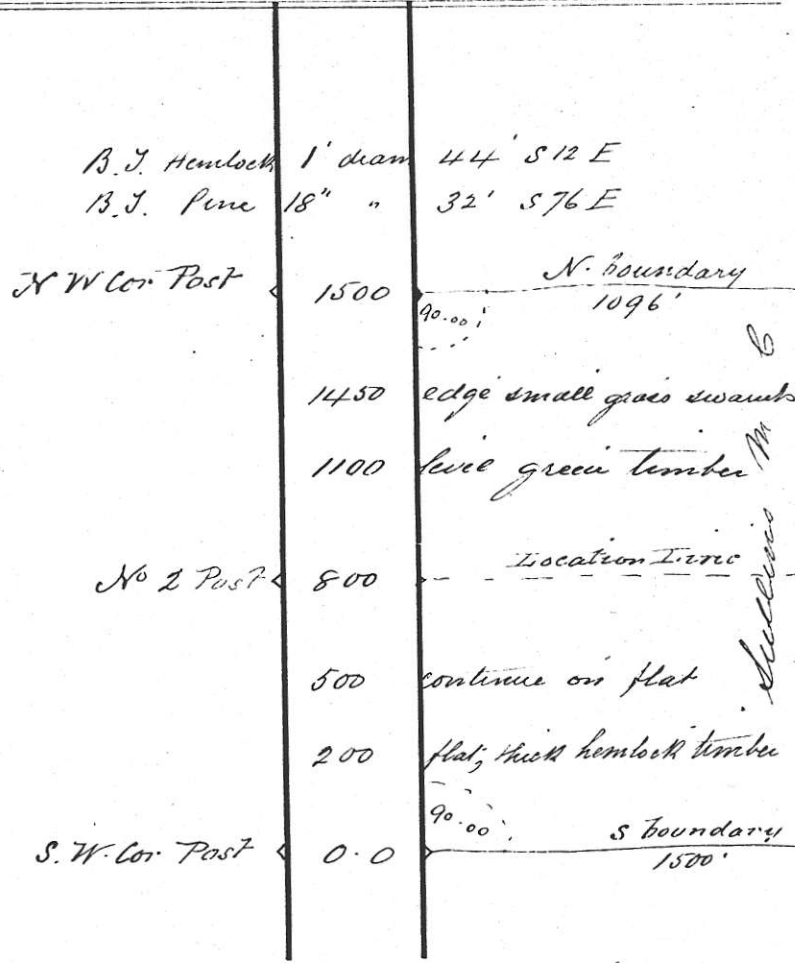
Mineral Claim

Lot No. 109 E West Chemainus District

West

Boundary

Bearing N 23° 15' E (Ast)



The above line was run the 8th day of July 1901
H. Fry P.L.S.

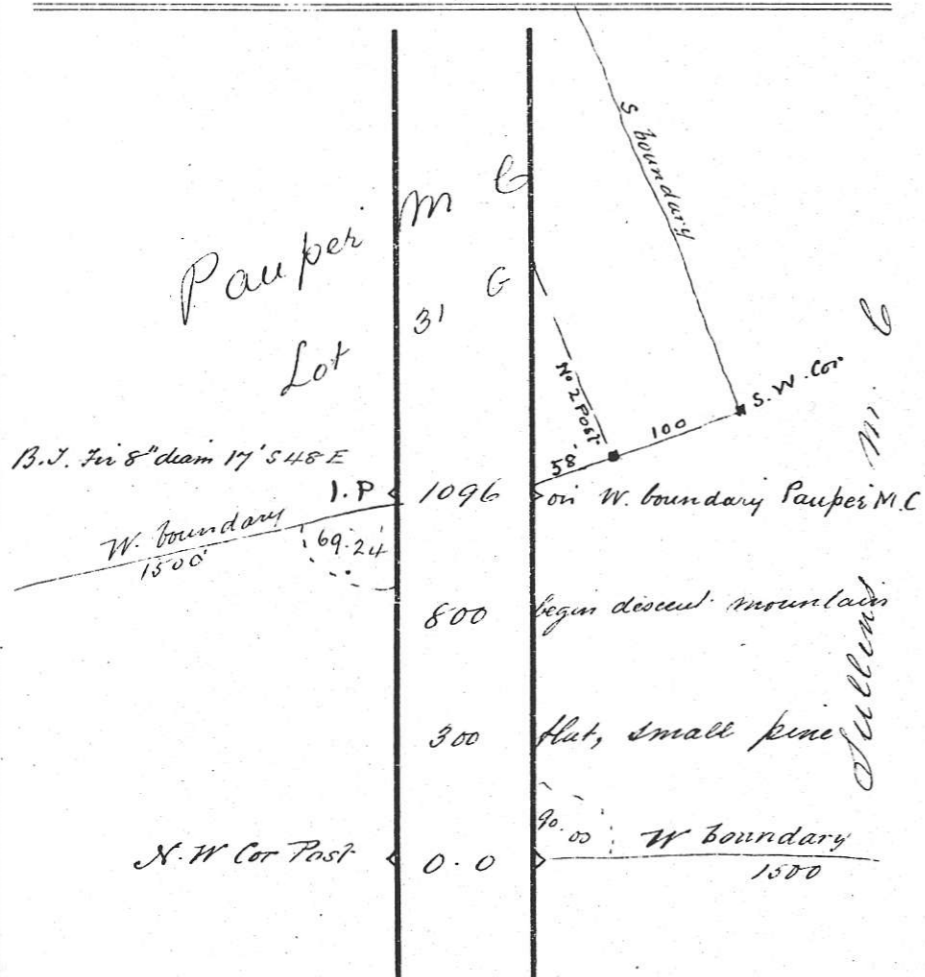
Sullens

Mineral Claim

Lot No. 109 G West Chemainus District

North Boundary

Bearing S 66° 45' E (Ast.)



The above line was run the 9th day of July 1901

Jb. Fry P.L.S.

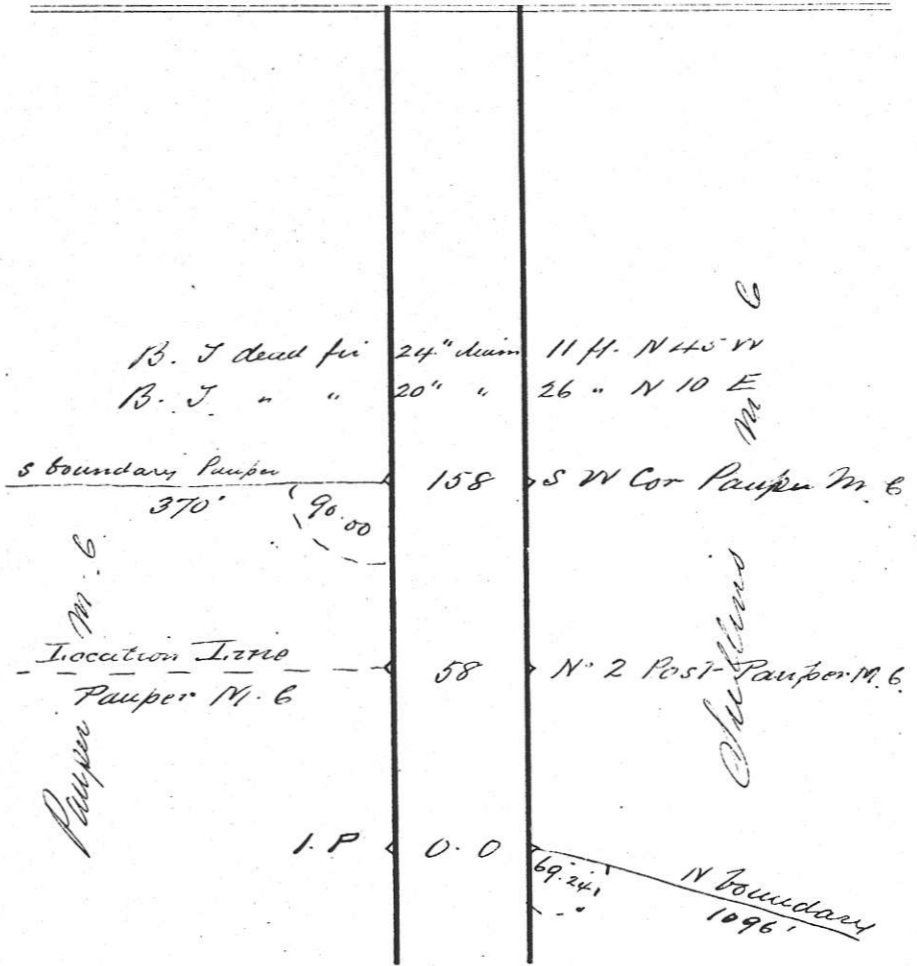
Sullens

Mineral Claim

Lot No. 109 G West Chemainus District

follow Pauper West Boundary

Bearing S 2° 39' W (Ast.)



The above line was run the 9th day of July 1901

Jb. Fry P.L.S.

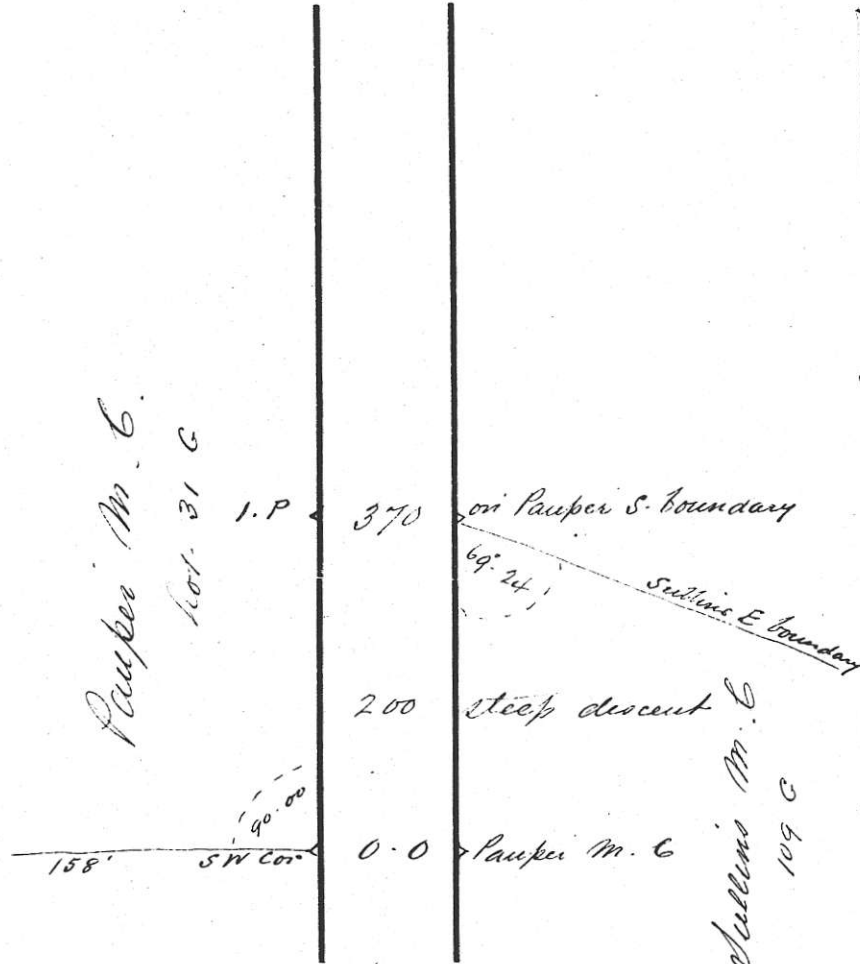
Sullins

Mineral Claim

Lot No. 109 G. West Chemariss District

Follow Pauper South Boundary

Bearing S 87° 21' E (AST)



The above line was run the 9th day of July 1901
 H. Fry P.L.S.

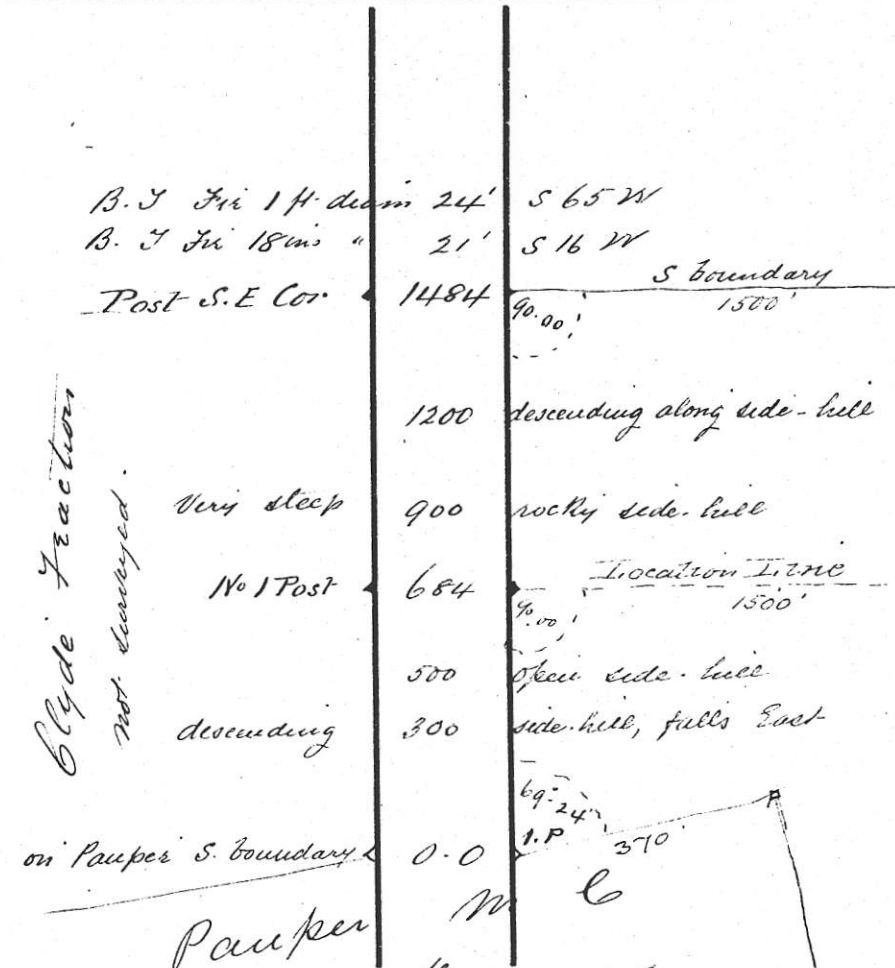
Sullins

Mineral Claim

Lot No. 109 G. West Chemariss District

East Boundary

Bearing S 23° 15' W (AST)



The above line was run the 9th day of July 1901
 H. Fry P.L.S.

10.

Sullivan

Mineral Claim

Lot No. District

Boundary

Bearing *Traverse Table*

No	Bearing	Dis	Lat		Dep		Total	
			N	S	E	W	Lat	Dep
4	N 66.45 W	1500	592			1378	592 N	1378 W
5	N 23.15 E	1500		1378	592		1970 "	786 "
6	S 66.45 E	1096		433	1007		1537 "	221 E
7	S 2.39 W	158		158		7	1379 "	214 "
8	S 87.21 E	370		17	370		1362 "	584 "
9	S 23.15 W	1484		1363		586	1	2

50.9 acres

The above line was run the day of 190

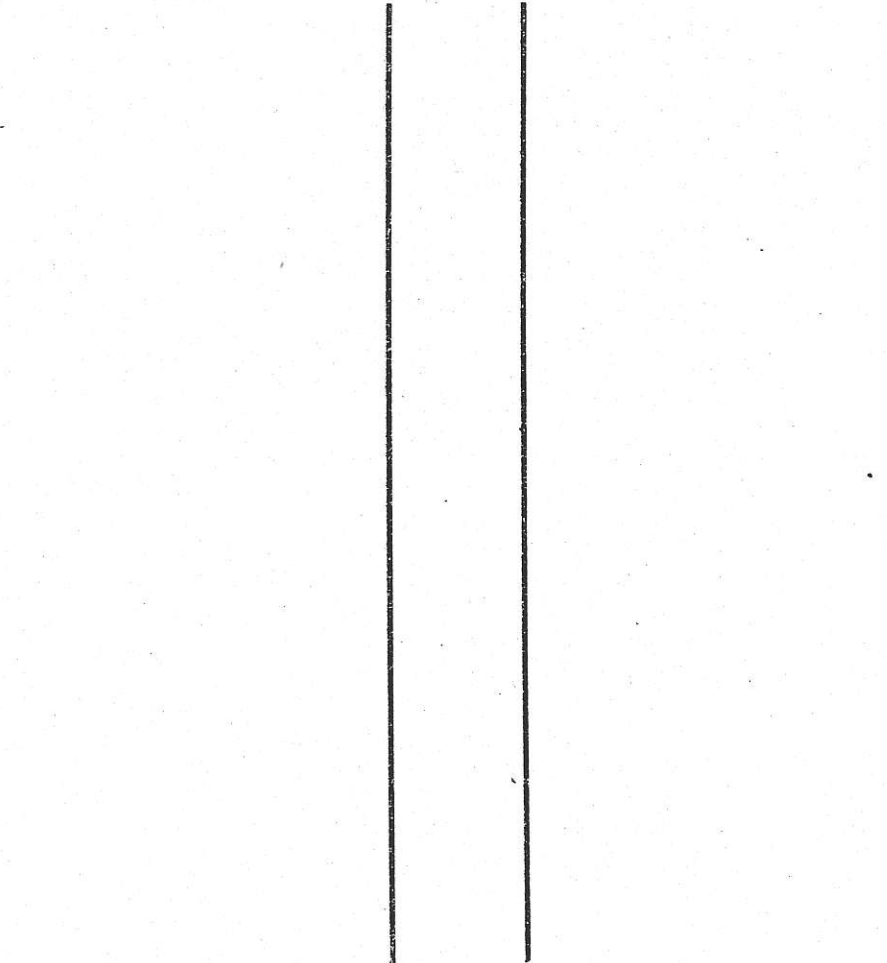
11

Mineral Claim

Lot No. District

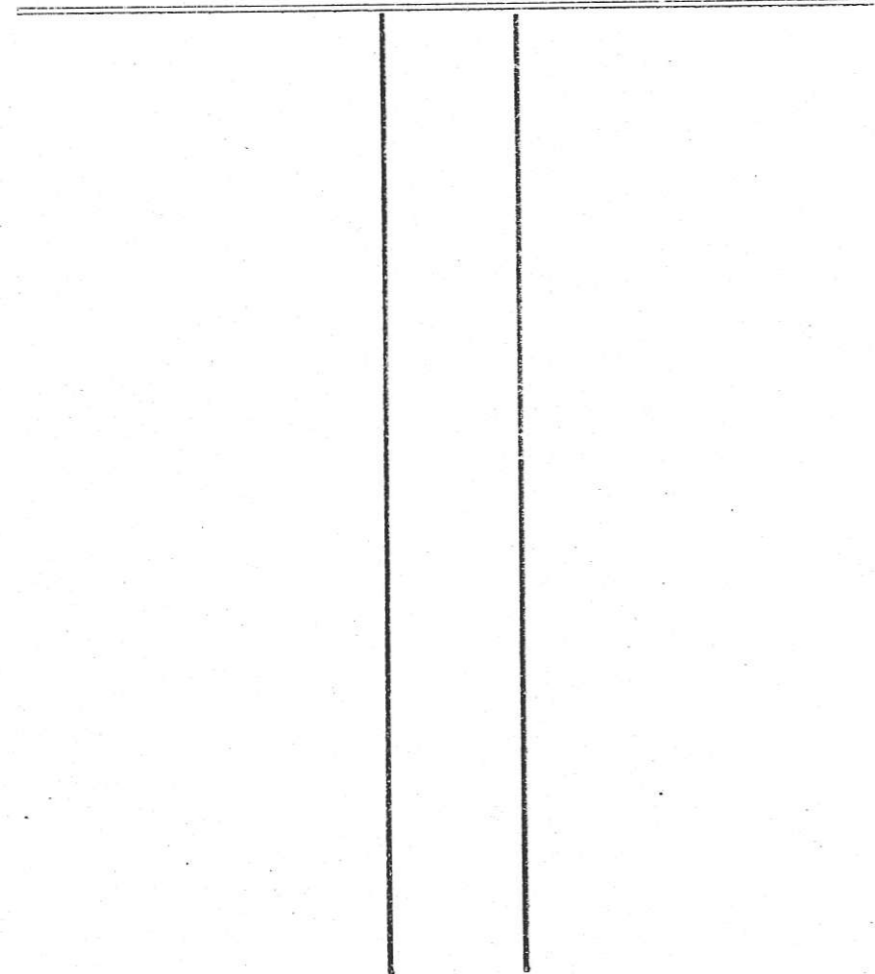
Boundary

Bearing



The above line was run the day of 190

..... Mineral Claim
 Lot No..... District
 Boundary
 Bearing.....



The above line was run the day of 190

Copy of Notice on No. 1 Post.

*Location Notice, Initial Post No 1 of the Sullens M. C
 I Lely M. Jindley have this day located this ground as a
 Mineral claim to be known as the Sullens M. C 1500 ft
 in length by 1500 ft in breadth, the direction of the location
 line is Westerly and 700 ft. of this claim lies to the right and
 800 ft. to the left of the location line, located this 15th day of July
 1847*

*J. S. Sullens
 Agent.*

Copy of Notice on No. 2 Post.

*Sullens M. C.
 No 2 Post of the Sullens M. C located
 July 15th 1847. Cert. 81093
 Lely M. Jindley
 by J. S. Sullens
 Agent.
 Prec M. Cert. No 81054*

Bearings are Astronomic. Bearings of B. T's Mag.
 Distances are in feet and tenths.
 Hubs centered with copper tacks.