

AFFIDAVIT.

Henry Fry

E. M. Skinner B.C., a duly authorised
 Land Surveyor for the Province of British Columbia, make
 say as follows:—

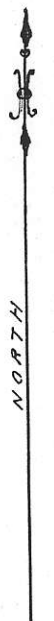
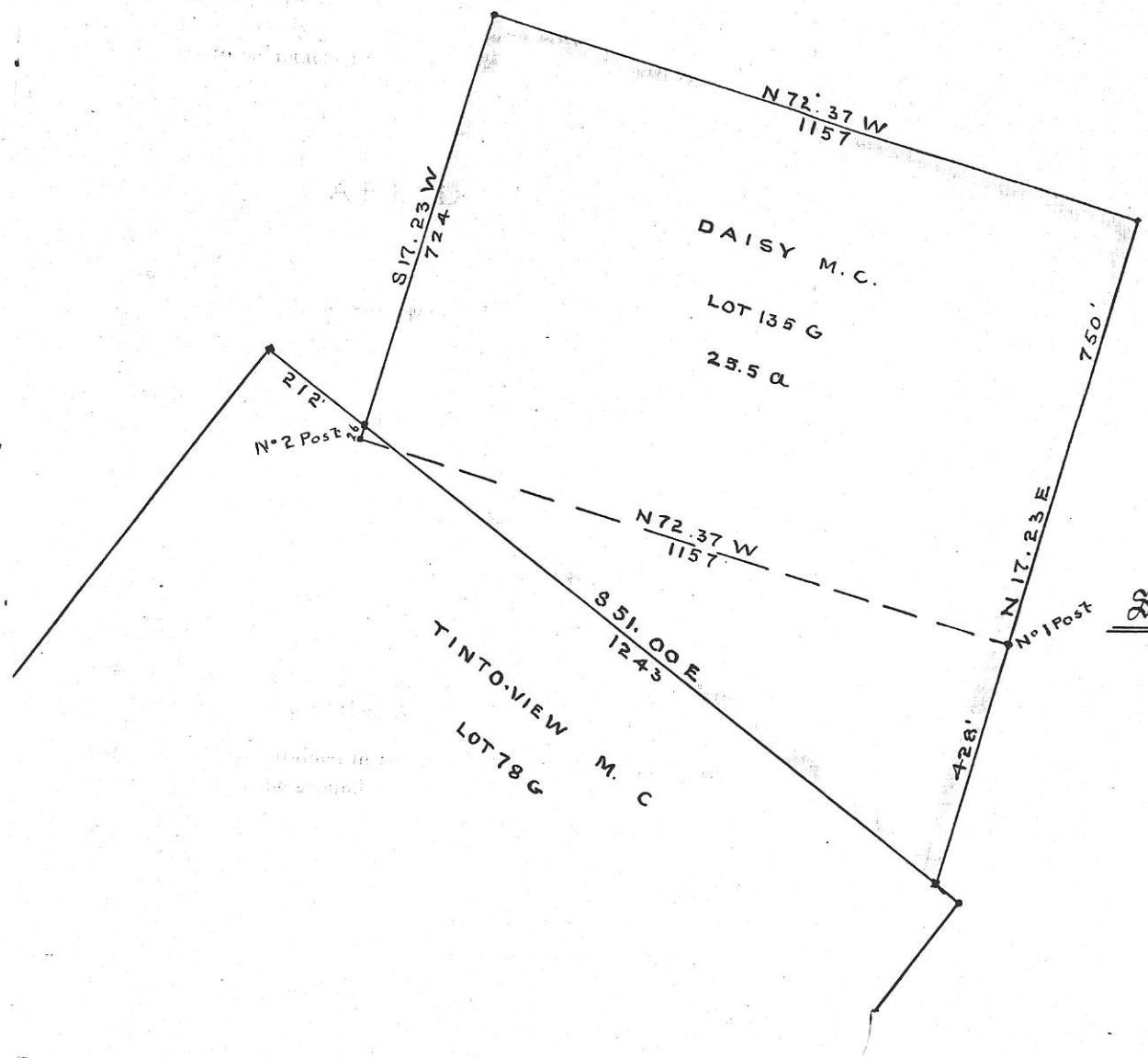
I have surveyed *the survey*
General Claim

commenced the said survey on the *5th* day
August, 190*4*, and completed it on the
16th day of *August*, 190*4*

personally ran all the lines of the said survey on the dates
 the annexed field-book and marked A.

The notes contained in the field-book are a correct represen-
 e work done on the ground by me.

before me at } *Henry Fry*
 this *23rd* }
1904 }
E. M. Skinner



Scale 300 ft = 1 inch

Copy of the

RECORD

Of the Daisy Mineral Claim.

Located by J. M. Little

Free Miner's Certificate No. B. 29540

The Claim is situated on Mt Brenton
bounded on the West by Suite 1100
East by Hampton.

The direction of the Location Line is Westerly

The length of claim is 1500 feet.

And 750 feet lie to the right of Location Line.

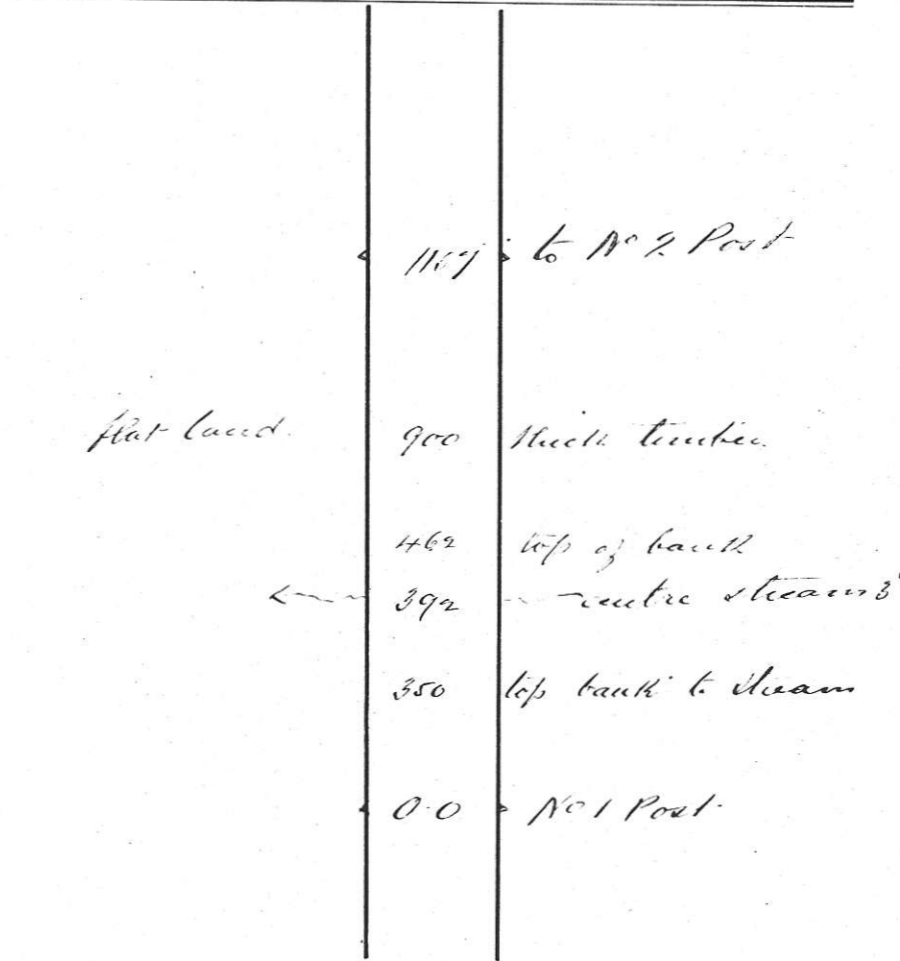
And 750 feet lie to the left of Location Line.

The claim was located on the 29th day of August 1900

Recorded this 17th day of Sept 1900

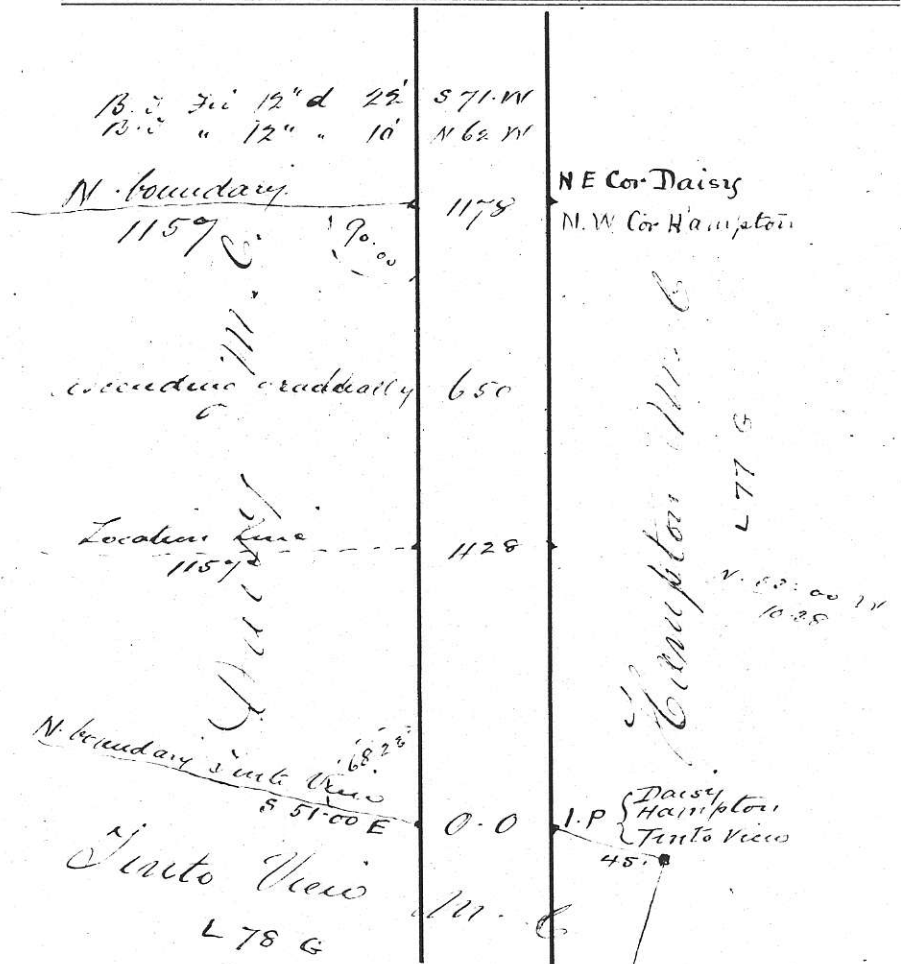
Signed W. S. Gore
Mining Recorder.

Daisy Mineral Claim.
Lot No. 1356 Clunias District.
Location line Boundary.
Bearing N 72° 37' W Asst



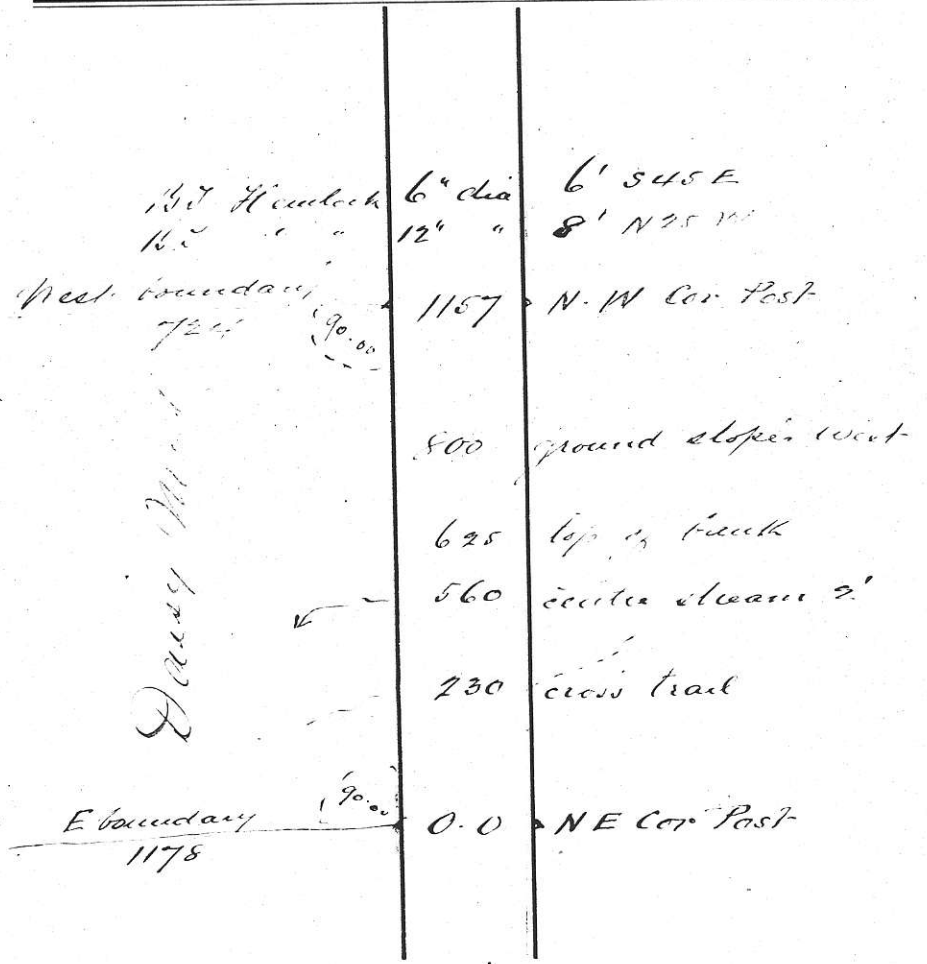
The above line was run the 5th day of August, 1904
H. J. P. S.

..... Daisy Mineral Claim.
 Lot No. 125 G District.
 East Boundary.
 Bearing N. 17. 23. E East



The above line was run the 5th day of August, 1904
 H. Fry

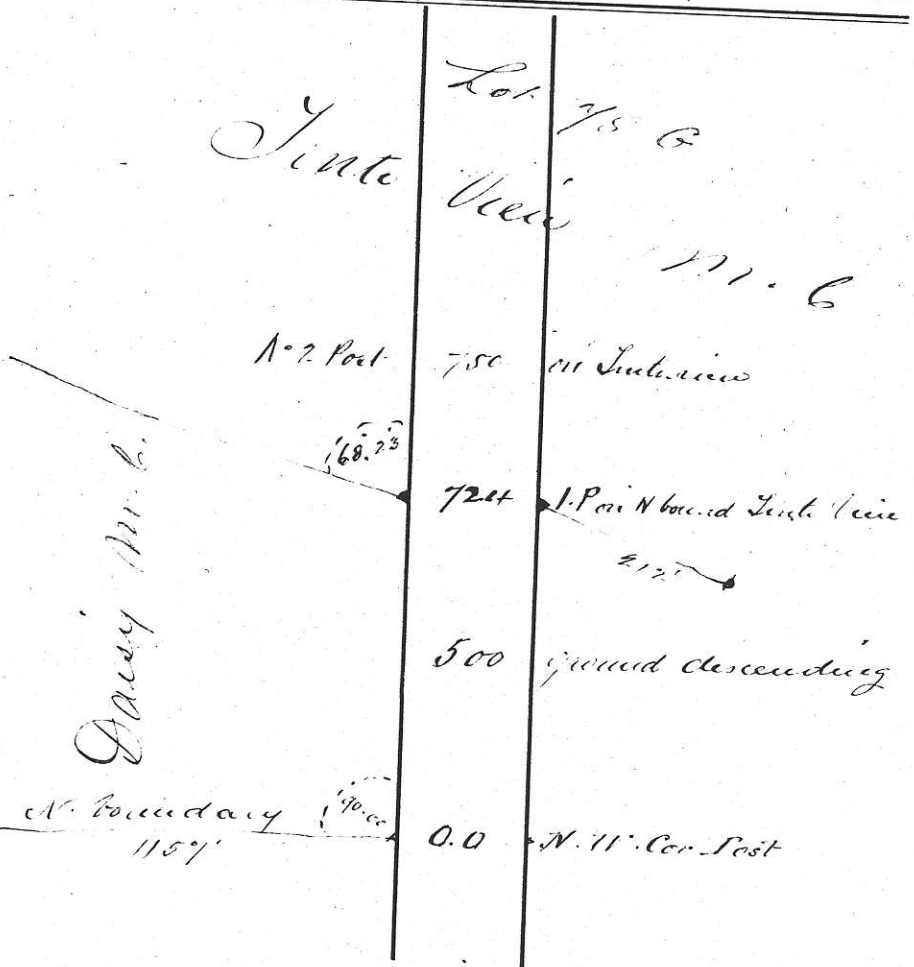
..... Daisy Mineral Claim.
 Lot No. 125 G District.
 South Boundary.
 Bearing N. 72. 37. W East



The above line was run the 5th day of August, 1904
 H. Fry

6

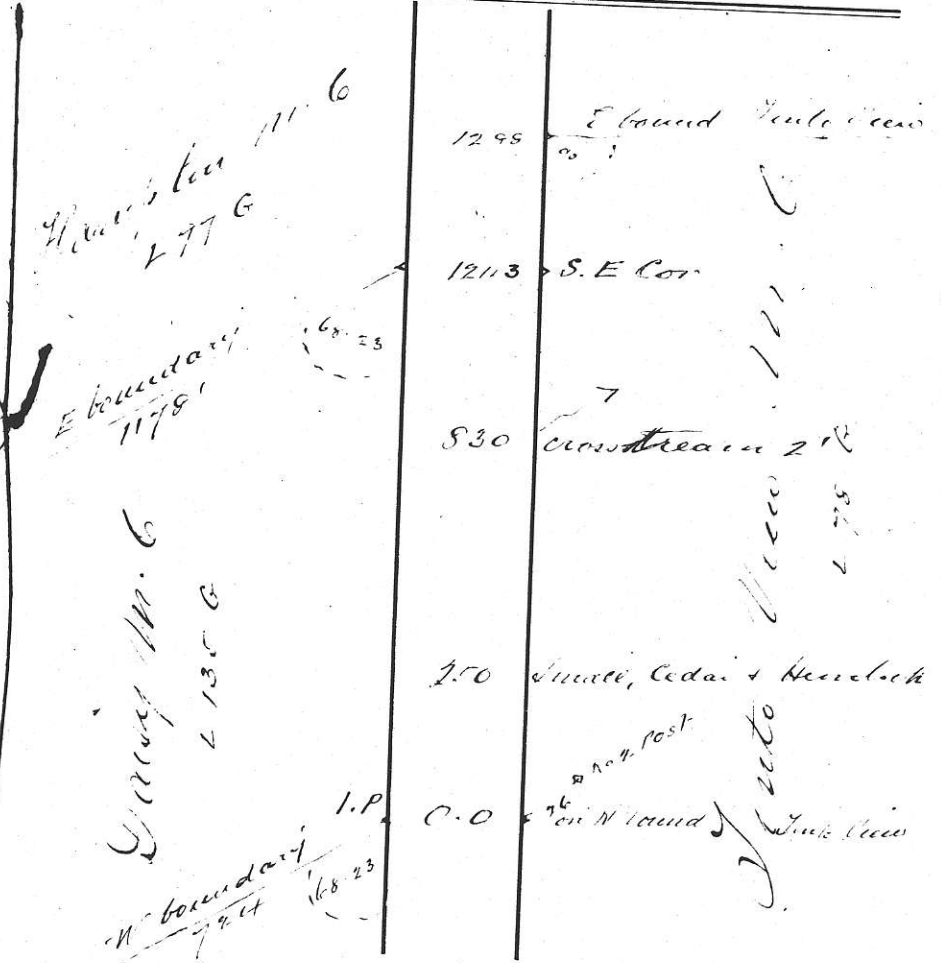
Daisy Mineral Claim.
 Lot No. 135 District.
 West Boundary.
 Bearing S 17. 23 N 1st



The above line was run the 5th day of August, 1904
 H. Fry

7

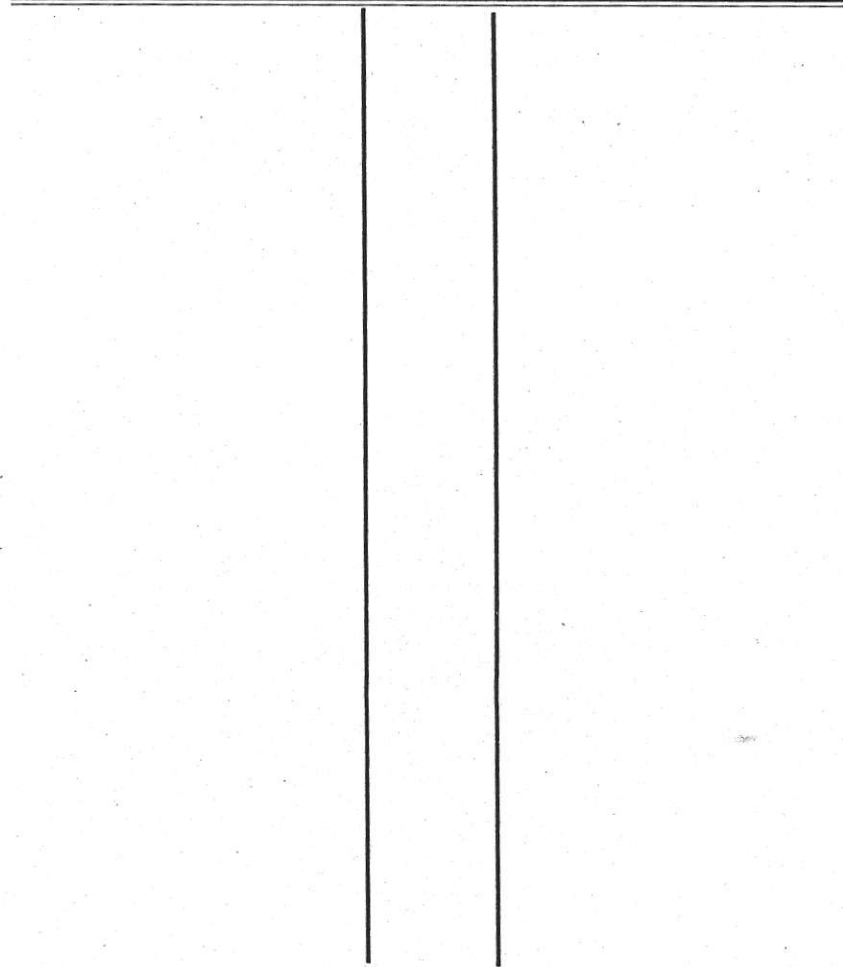
Daisy Mineral Claim.
 Lot No. 135 G District.
 North Boundary.
 Bearing S 51. 00 E 1st



The above line was run the 5th day of August, 1904
 H. Fry

8

..... Mineral Claim.
 Lot No District.
 Boundary.
 Bearing



The above line was run the day of, 190

9

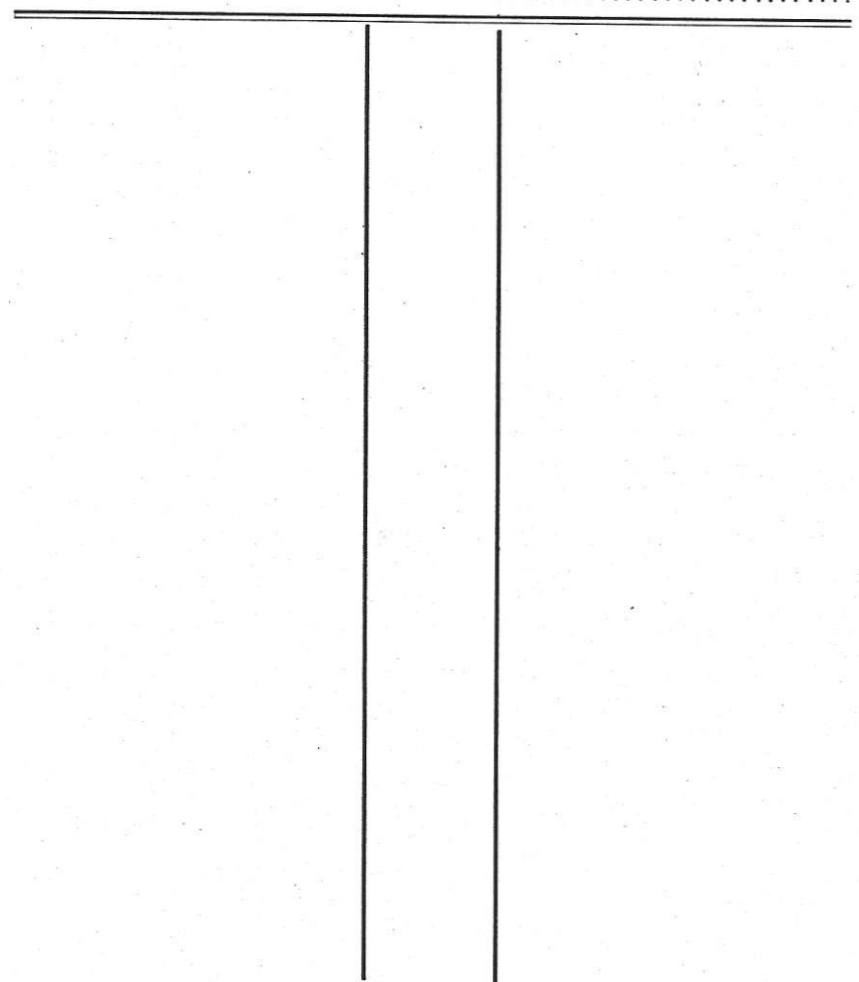
Daisy Mineral Claim.
 Lot No *135 E* District.
 Boundary.
 Bearing *Merriette*

No	Bearing	Dis	Lat		Dep		Total	
			N	S	E	W	Lat	Dep
4	N 17.23 E	1178	1124		352			1124 N 352 E
5	N 72.57 W	1157	346		1104	1470		752 W
6	S 17.23 W	711		690	216	780	968	"
7	S 51.00 E	1243		780	966	0	2	

25.5 a

The above line was run the day of, 190

.....Mineral Claim.
 Lot No.....District.
Boundary.
 Bearing.....



The above line was run the.....day of....., 190

Copy of Notice on No. 1 Post.

*No. 1 Post Daisy Mineral
 Claim.*

*Note. The remainder of writing was
 illegible*

Copy of Notice on No. 2 Post.

*No. 2 Post Daisy Mineral
 Claim.*

J. M. Little

Bearings are Astronomic. Bearings of B. T's Mag.

Distances are in feet and tenths.

Hubs centered with copper tacks.