



PAN OCEAN OIL LTD.

PROJECT: **RECCLE**

Property or Area: _____

Date: **1987**

Map or Air Photo: _____

Sampler: **REK**

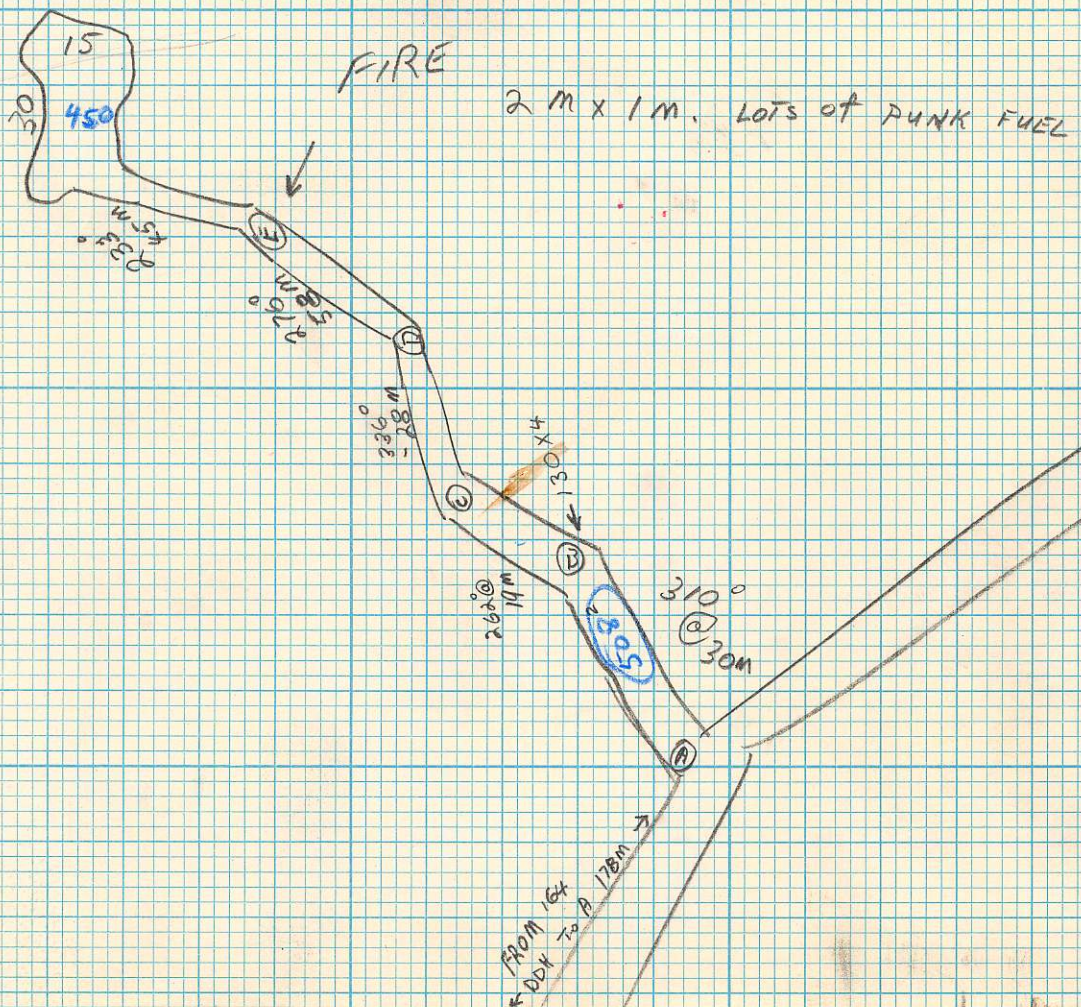
STATION OR SAMPLE #

NOTES

92B/13

827486

RECCLE WATER Rd.





PAN OCEAN OIL LTD.

PROJECT: RECCE

Property or Area: _____

Date: 1987

Map or Air Photo: _____

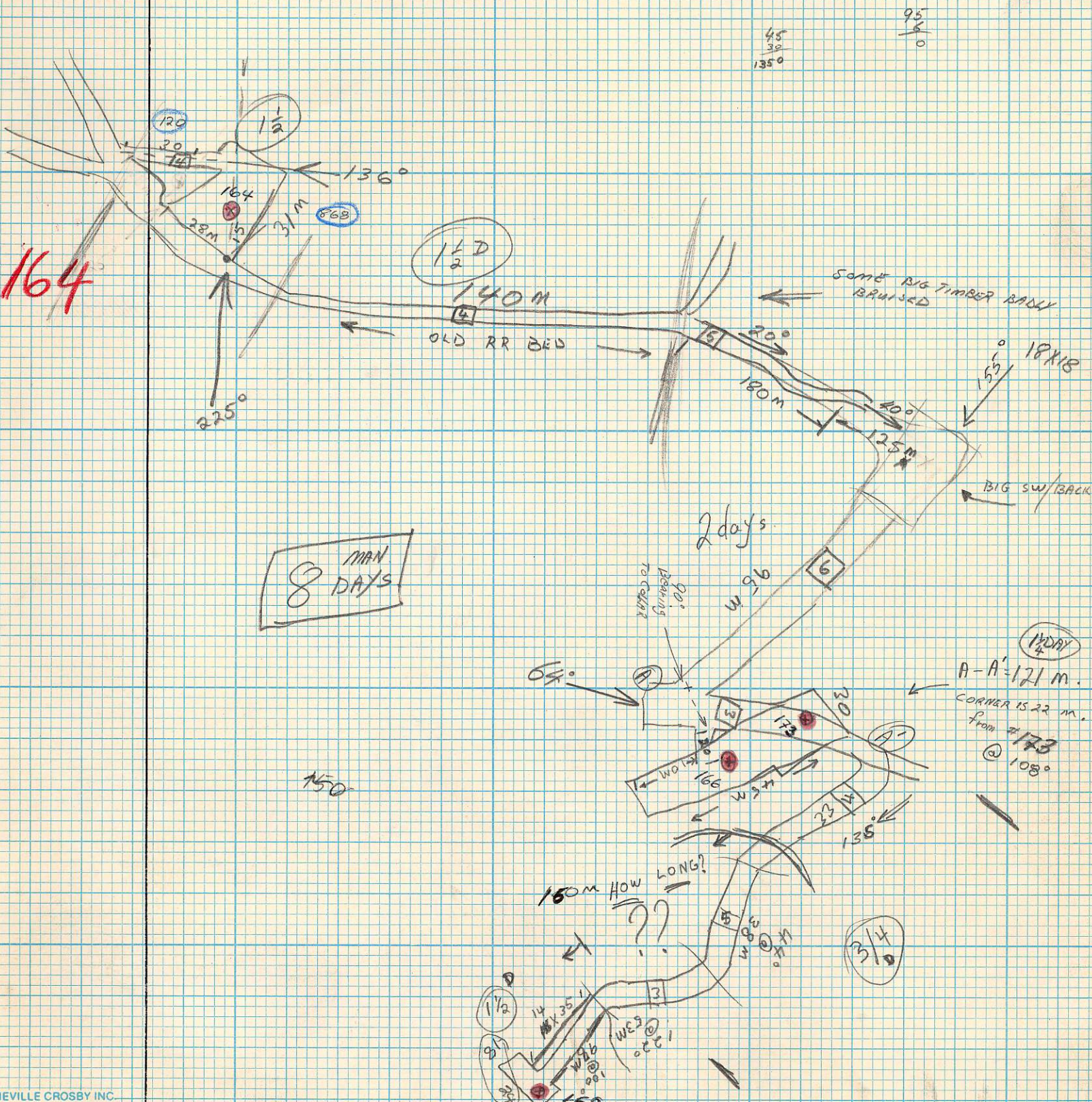
Sampler: REK

STATION OR SAMPLE #

RECCE

NOTES

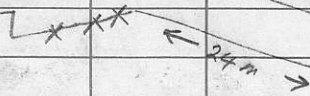
177 some trees down below Rd. 8 site,



DISTURBED:

RIG 2

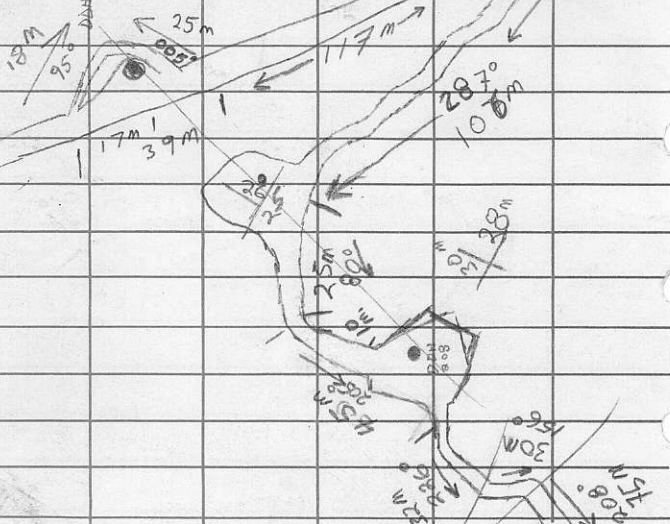
209



RIG #1

208+R10

VERY LITTLE DISTURBED



NEVILLE CROSBY INC
VANCOUVER, B.C.

15m @ 270°

211 35x20

25x25

213

④

214+25

212

37

22m

③.5

211

25x20

215

34

30

M

210°

214

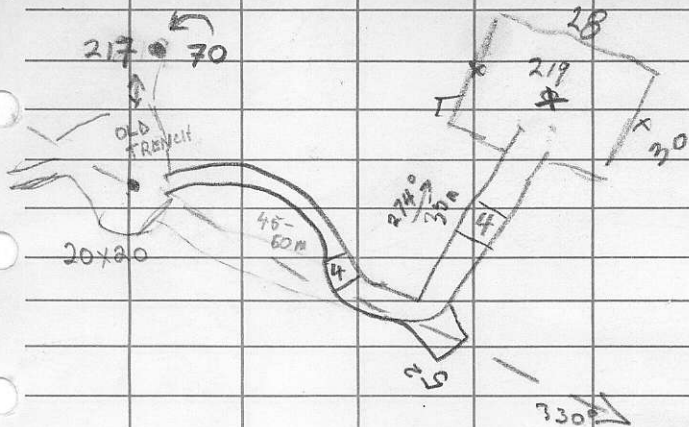
↑ 28 ↓

20

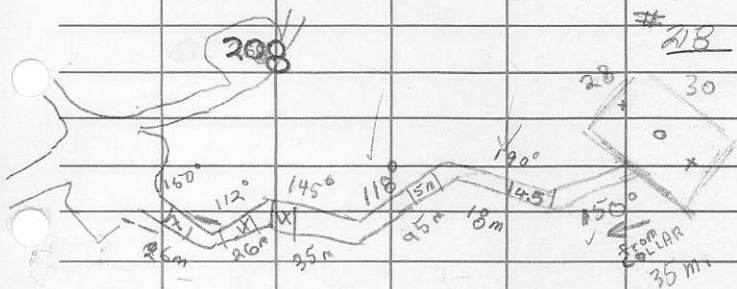
216

20x30

?



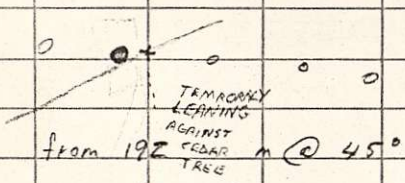
218



Z(w)

1987
REIK

x 57W + 1125N



JOHN

PYRITES

42.5

21.5

517 ft.

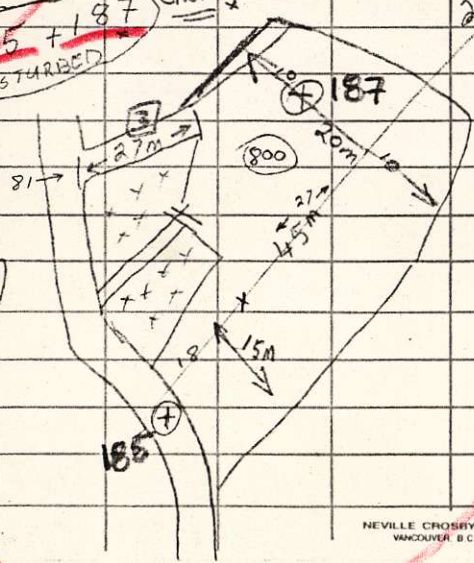
GRN-DARK

~~185 + 187~~
DISTURBED

CASING

24°

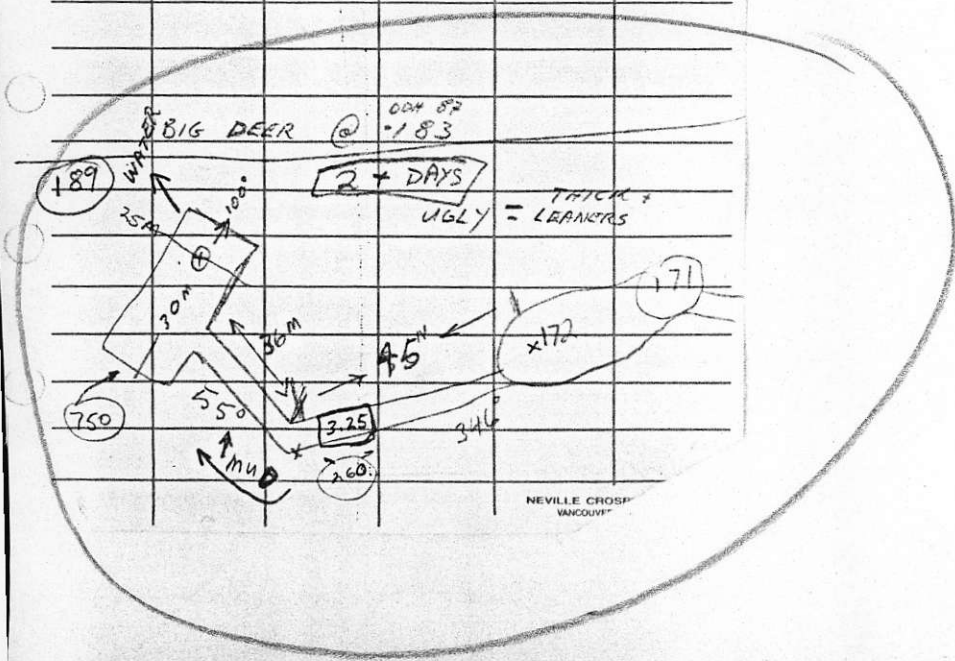
2+DAYS



1987
REK

Z (W)

REK	208-68°	July 11-87
192	62 m @ 330° from 78,79	
	54 m @ 028° f. 183	
	F. 12 m B. 14 m	
2	54 m @ 028° f. 192	
	208-70°	
	F. 14 m B. 12 m	
3	64 m @ 028° f. #2	
195	208-70°	
	F. 11 m B. 12 m	





Z (w)

Property or Area: _____

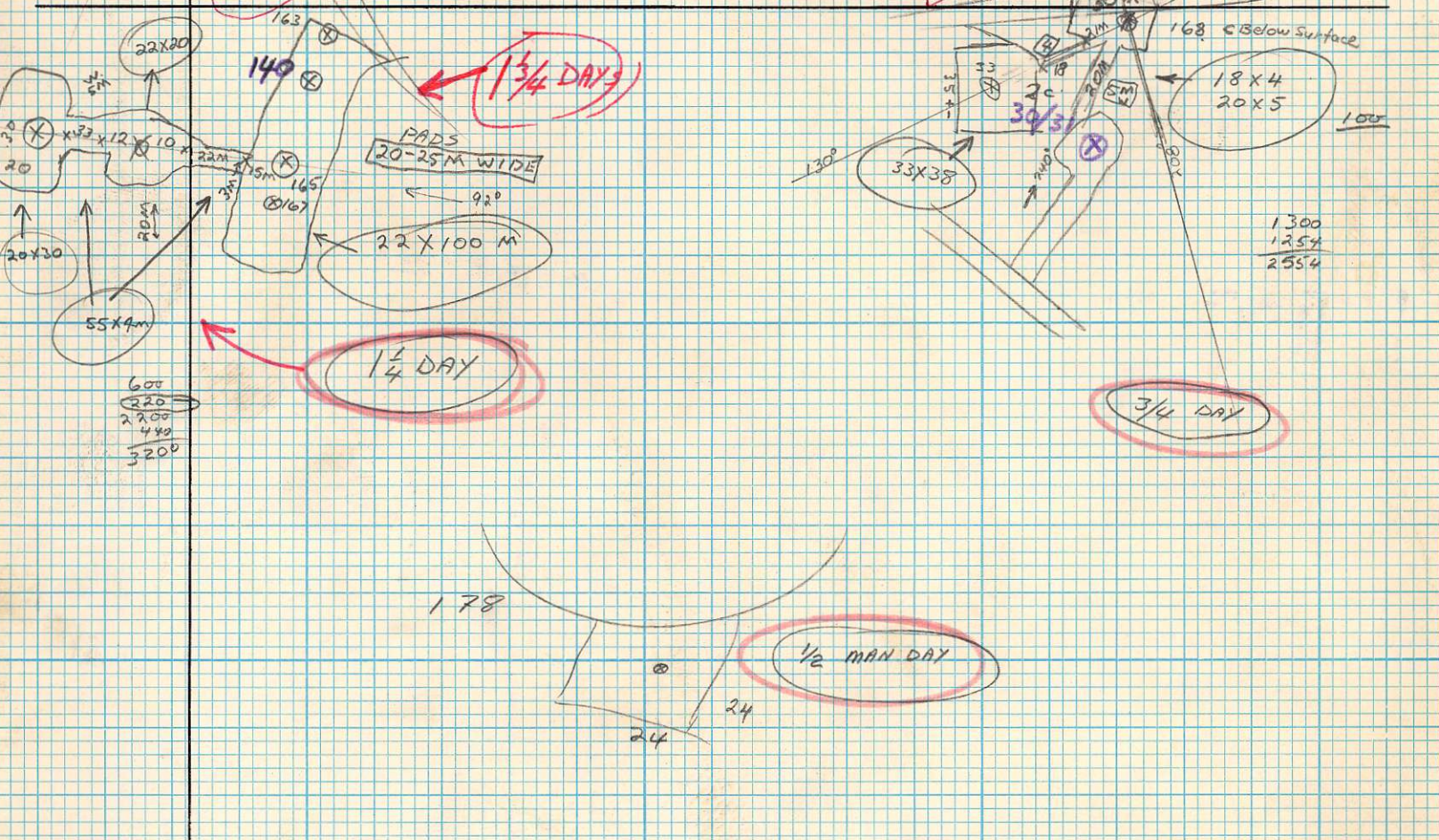
Date: 1997

Map or Air Photo: _____

Sampler: REK

STATION OR
SAMPLE #

NOTES



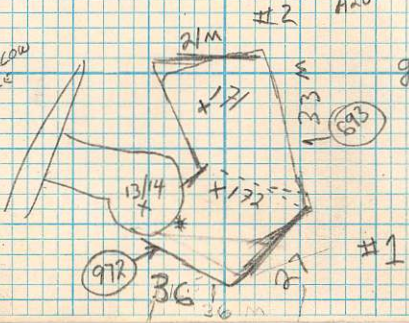
CHECK CHECKER BOARD SIGNS ON GATES.

(LOW GATE)
MISSING

CASING
85-27
24/25 H2O
16
18
17
15
13
12

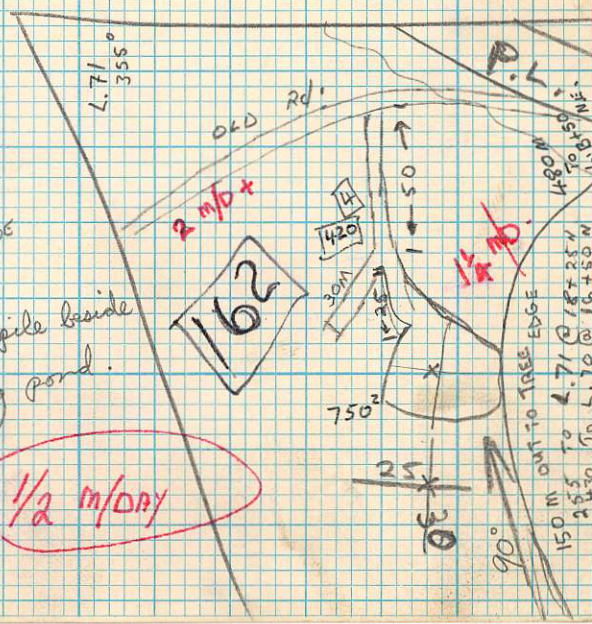
172
171

#1 H2O CASING BELOW SURFACE



casing above H2O IN CASE + BESIDE
garbage pile beside settling pond.

1/2 m/day





PAN OCEAN OIL LTD.

PROJECT:

Z (E)

Property or Area: _____

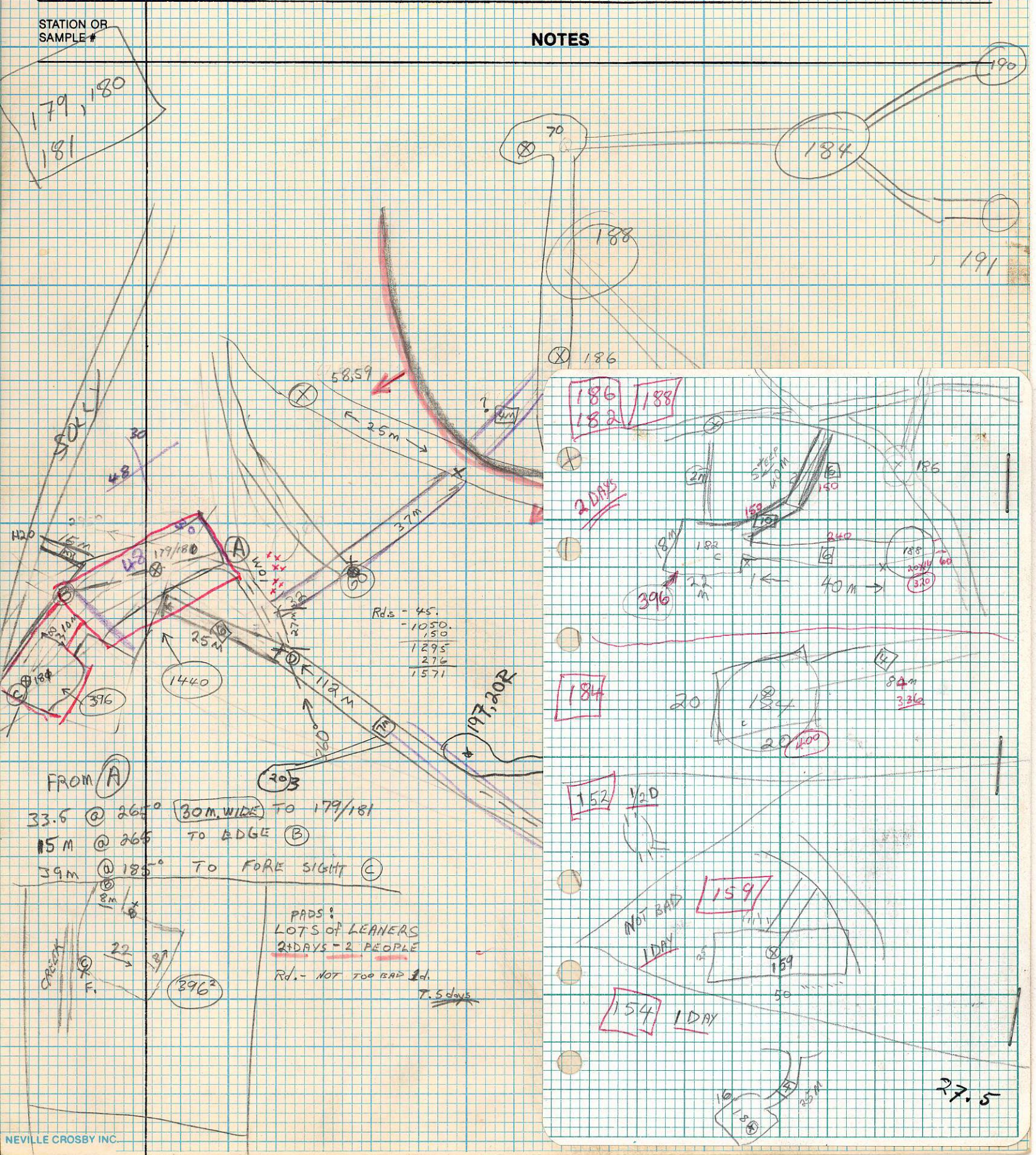
Date: 1987

Map or Air Photo: _____

Sampler: R.F.K.

STATION OR SAMPLE #

NOTES





PAN OCEAN OIL LTD.

PROJECT:

Z (E)

Property or Area: _____

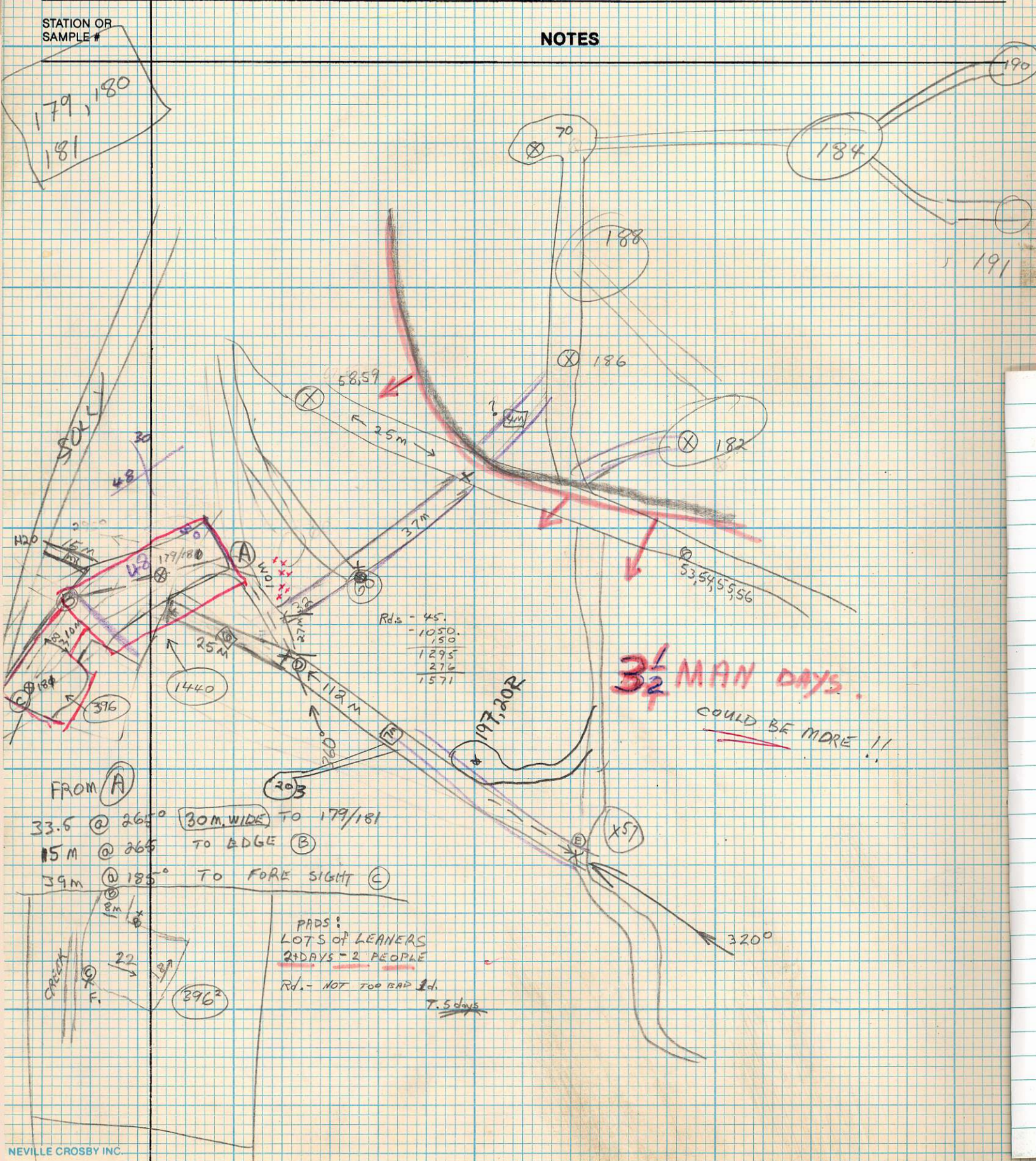
Date: 1987

Map or Air Photo: _____

Sampler: R.F.K.

STATION OR SAMPLE #

NOTES





PAN OCEAN OIL LTD.

PROJECT: Z (E)

Property or Area: _____

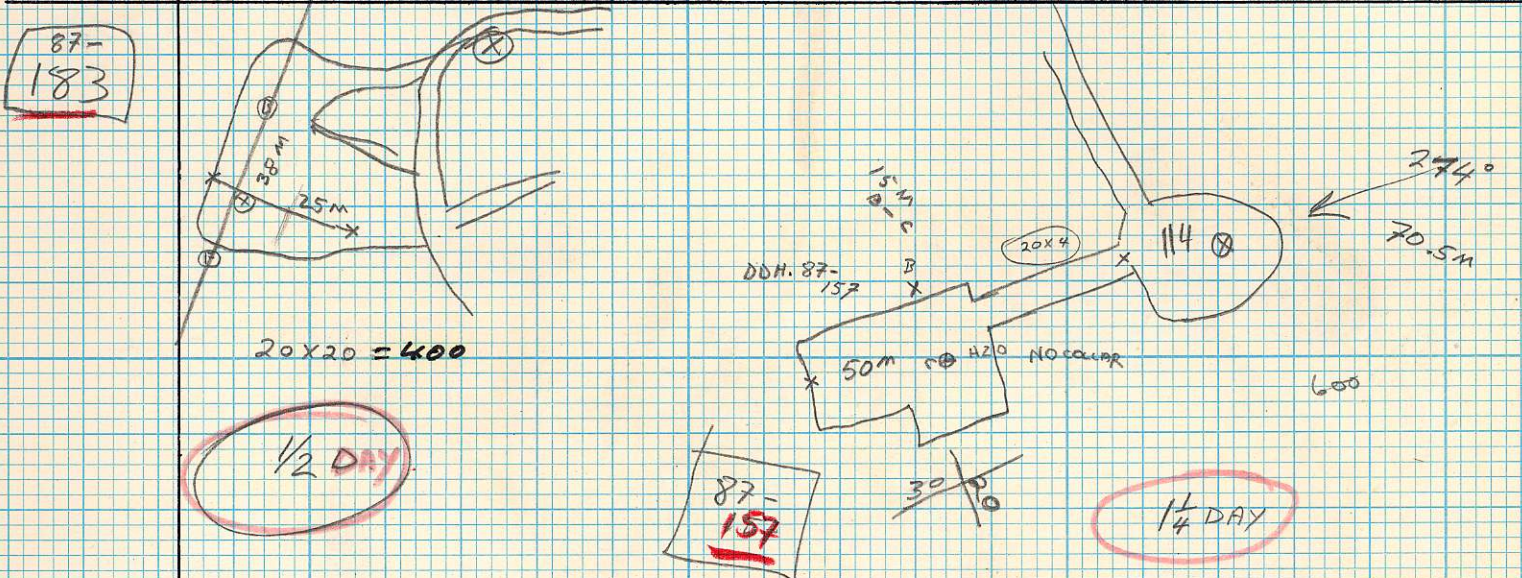
Date: 1987

Map or Air Photo: _____

Sampler: REK

STATION OR SAMPLE #

NOTES



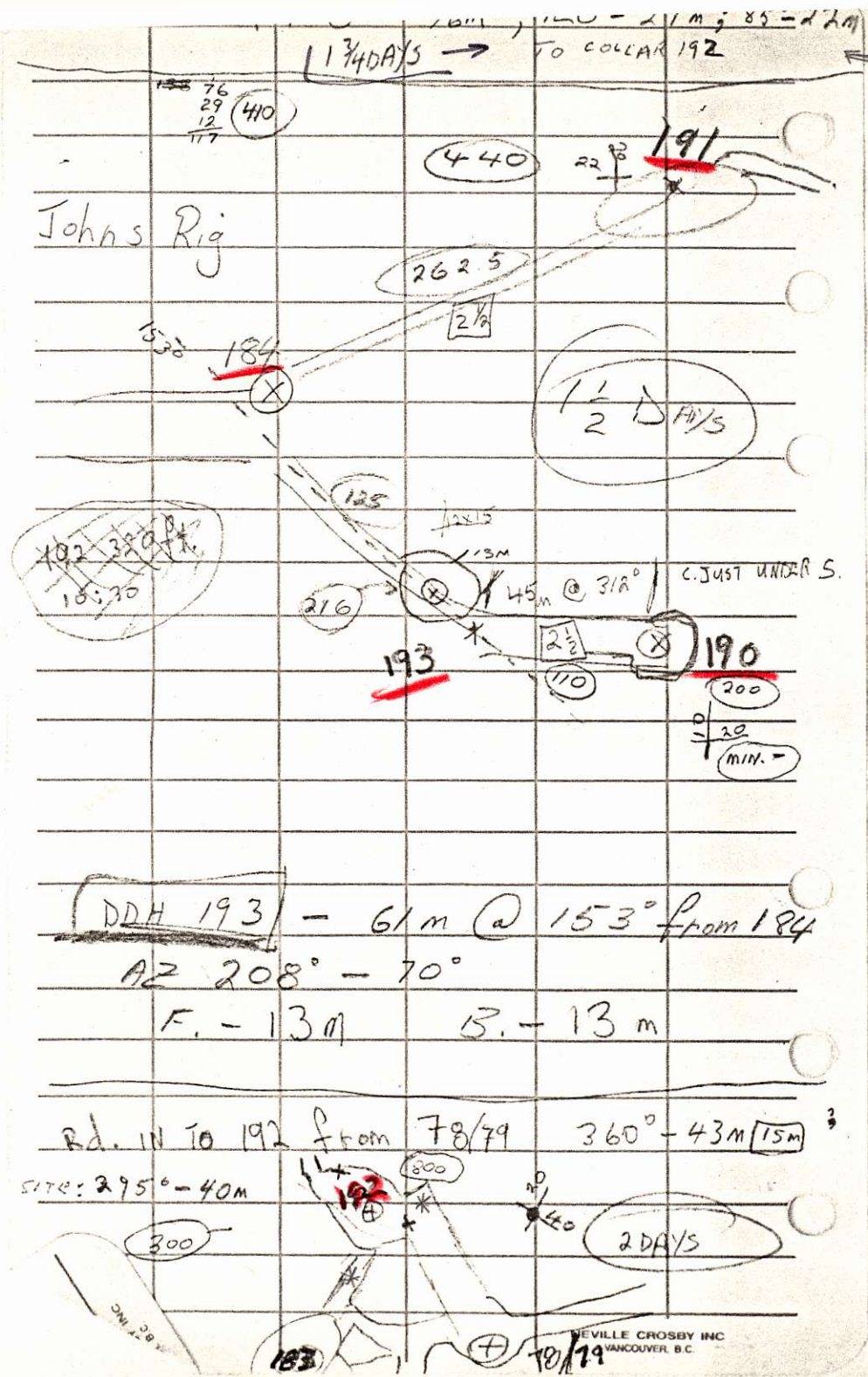
199, 201, 206 (Ref. SITES)

$\approx 10 \times 2 + 15 \times 2 =$

1/4 million tons

6 story 18m 10 ft/story

? 88/89 154 288 $\frac{1}{2}$ ° 77m



(4m. AV. WIDTH)
 Rd. from Edge of 191 :- 76m @ 138°
 29m @ 120° , 22m @ 85° to #192

508m
 + 200 **

Z (E)

1 3/4

192
 183

1987
 REK

2



PAN OCEAN OIL LTD.

2

PROJECT:

ZONE (E)

Property or Area:

Date:

1987

Map or Air Photo:

Sampler:

REIK

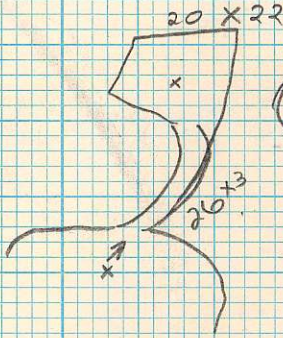
STATION OR SAMPLE #

1-800-821-TALK

NOTES

196

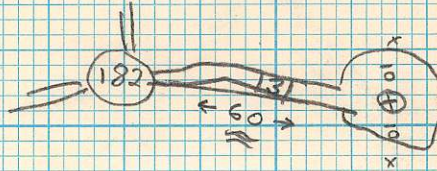
1 DAY



(1440)

200

$$\begin{array}{r} 884 \quad 600 \quad 2 \\ 360 \quad 180 \\ \hline 1244 / 780 \end{array}$$
 1 DAY
3



194

(2 hr.)

12 X 15

(168)

ALDERS 240

6 m. WIDE
 from x
 35m @ 208°
 36m @ 265°
 30m @ 230°
 28m @ 180°
 GRID LINE

CANDIDA NISTATIN

195

180°

GRID LINE

12m X 3

255°

UGHLY

SITE 2 D
ROADS 2

PY BANDING

1:05 PM

1605
QUARTZ POCKET

380
 175
 480
~~336~~
 1371

555
 36
 1080
 1670

W.F.C.

MERCH TREES

58°

(770) 22 X 35

19
 .5
 .75
 1.25
 .25
 1.9
 2
~~2~~
 6.25
 5.75



PAN OCEAN OIL LTD.

PROJECT: Z (E)

Property or Area: _____

Date: P 1987

Map or Air Photo: _____

Sampler: REK.

STATION OR SAMPLE #

NOTES

$196 - 204 = 92^\circ$

PIN - TREE * 9m @ 117°
22m @ 76°

204

205

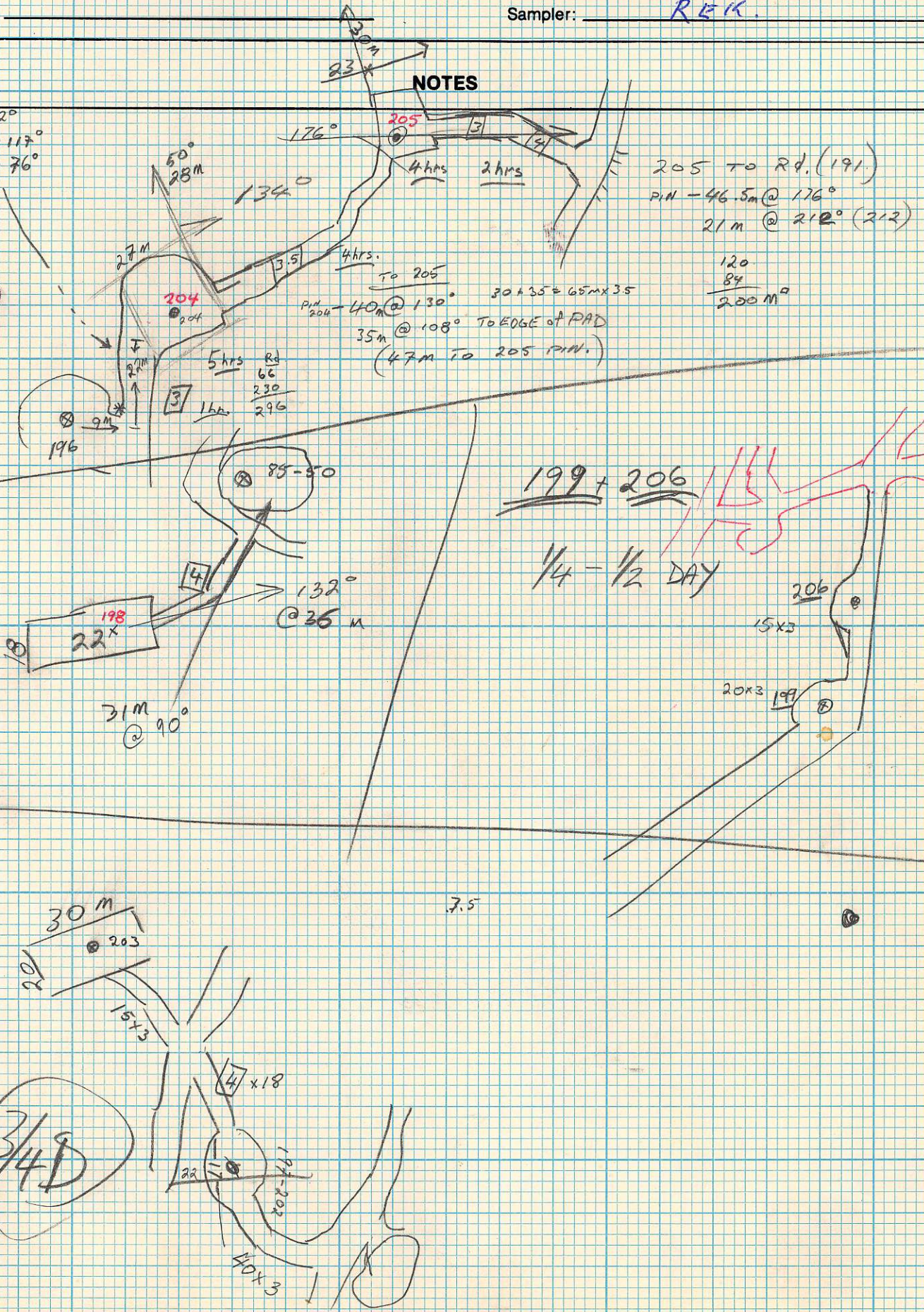
~~198~~

1/25

203

197/202

3/4 D



205 TO Rd. (191)
PIN - 46.5m @ 176°
21m @ 212° (212)

$$\frac{120}{84} = 200 \text{ M}^2$$

To 205
P.M. 204 - 40m @ 130° 30 + 35 + 65m x 35
35m @ 108° TO EDGE OF PAD
(47m TO 205 PIN.)

199 + 206

1/4 - 1/2 DAY

7.5



PAN OCEAN OIL LTD.

PROJECT: _____

Property or Area: _____

Date: _____

Map or Air Photo: _____

Sampler: _____

STATION OR
SAMPLE #

NOTES

40 m ① From Collar DDH 145 179° bearing for 16.50 m ✓
for sight 028° 208° backside 028° (-50°)

300 ② From Collar of DDH 60 bearing 273° for 77.00 m to Collar
foresight 208° backside 028°
LARGE 2 SITES NOT
SAME COLLAR
2 for TUE.

50 ③ From Collar #2 bearing 208° for 41.00 m to Collar ✓
foresight 208°

* Collar #3 From DDH 145, 65.00m bearing 128°
foresight 208° backside 28°

138°

Where is Sally Creek

140 W 1st
94 W

* Road for Collars 2+3 ; From DDH 57 180 m bearing 304°





PAN OCEAN OIL LTD.

PROJECT: _____

Property or Area: _____

Date: _____

Map or Air Photo: _____

Sampler: _____

STATION OR
SAMPLE #

NOTES

CORONATION ZONE

"Large Sites"

from DDH 140 "Large DDH sites"

① from Collar 140 028° for 16.50 to new collar, backside 028°, forsite 208°

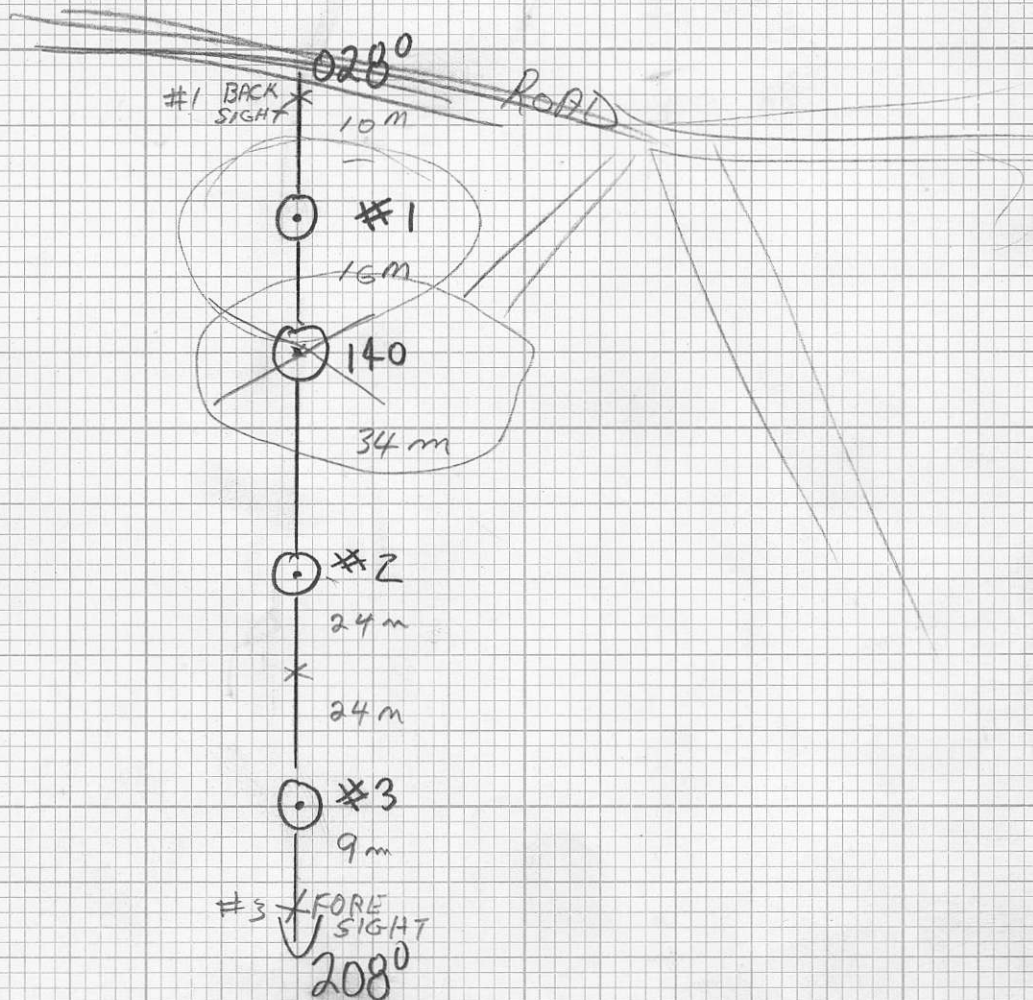
② from Collar 140 208° for 34.00 m, backside 028°, forsite 208°

③ from Collar 140 208° for 82.00 m, backside 028°, forsite 208°

DDH'S
AZIMUTH
208°

82
34
48

24





PAN OCEAN OIL LTD.

PROJECT: _____

Property or Area: _____

Date: _____

Map or Air Photo: _____

Sampler: _____

STATION OR
SAMPLE #

NOTES

- #1 From Collar DDH 165
292 1/2° bearing for 52.50 m to NEW Collar 174
Sightsight 208°, backsight 028°
- #2 From Collar ¹⁷⁴#1 291° bearing for 53.50 m to
Collar #2, Sightsight 208° backsight 028° 175

ROY

DDH 198

44 m @ ^{244°}~~298°~~ from 190

208°, -70° -68°

~~Looks to be 13 m west of 193~~

DDH 199

Tie III

4 1/2 m @ 311° From (51, 52)

208°, -60° -58°

(on 55 1/2 m @ 208 from 198)
(53 m @ " " 198)

W



PAN OCEAN OIL LTD.

PROJECT: _____

Property or Area: _____

Date: _____

Map or Air Photo: _____

Sampler: _____

STATION OR
SAMPLE #

NOTES

from L61+00W

at 13+75N go 42.00m bearing 028° to collar

forsight 208° / backsight 028°

RIG #1
Low
SITE 2



②

from 18+83N L57+00W then

10.00 at 89° to collar.

forsight 208° / backsight 028°

UP
RIG 2
350'
400'

OR

156.50m bearing 028° from 219

216

^{150 m.}
#1

43.0 m @ 028° from 20+00 N / L.63+00 W. 208-50°

^{150 m.}
#2

^{120 m.}
#4

51.5 m @ 028° from 19+00 N / L.66+00 W. -50°

^{150 m}

#6 - access from Rd. @ 92, 93 ?

55.0 m @ 028° from 15+47 N / L.65 W. -50°

SITE 6 MOVED BACK 55 M.

check Henry & Rig. 2 set up

FENCE

RIG #2

BY
SAT

195

28° ✓ 131.5m - 65

✓ 209.5m - 65

✓ 293.5m - 65

✓ 397m - 55

FOREST^{#17} all 208°

397.0

293.5

103.5

293.5

209.5

84.0

209.5

131.5

78.0

1st

205 bear

28°

169m - 50

try to tie to line 225.5 - 60 56.5

309.5 - 60 84m

389.5 - 50 80m

389.5

309.5

80.0

line 60 @ 9.0N

30m @ 0.28

- 50

309.5

225.5

84.0

225.5

169.0

56.5

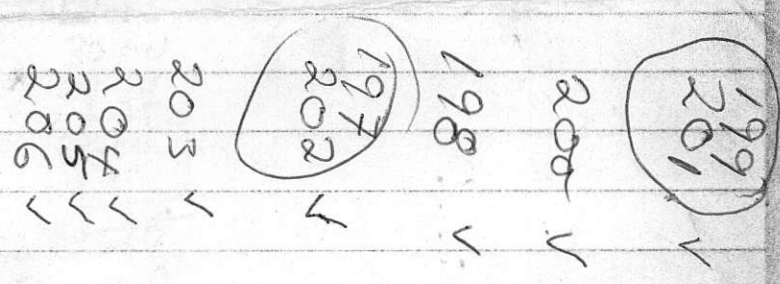
TEST
TUBE
2/2

move Rig #2
tonight.

Double E
savings bond.
#25 = 50 in 12 yrs.

ON Line 60+00W

- ① From 13+00 (old grid) [13+33.5 (New Grid)] on a 028° bearing for 15.00 m to Collar (-50°). Use grid as foresight backsight 028°
- ② From new collar location on 028° bearing for $19\frac{1}{2}$ m to 2nd collar (-50) (should be on 15+25N on L59) foresight 208° backsight 028°
300 m
- ③ From 16+20N on ~~L60~~ L59, 028° bearing for $36\frac{1}{2}$ m to collar (-55°) foresight 208° backsight 028°
200 m
- ④ From 17+50 on L58 bearing 077° for 42.00 m to collar foresight 208° backsight 028°
200 m
- ⑤ From 8+25N on L59+00W bearing ~~277~~¹⁰⁹ for 18.00 m foresight 208° backsight 028°



ell