

File
Notes 827462

nothing new
g.w.
12/09/88

GEOLOGICAL REPORT
ON THE
NORTH FORK 1-5 CLAIMS
NEW WESTMINSTER MINING DIVISION
N.T.S. 92H/12

49° 36' N 121° 45' W

for

ISLAND STAR RESOURCE CORP.
13-1155 MELVILLE STREET
VANCOUVER, B.C., V6E 4C4

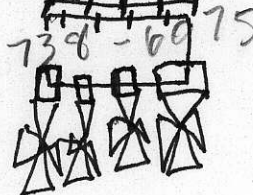
by

GARY A. MEDFORD, Ph.D., FGAC
Consulting Geologist
3894 West 37th Avenue
Vancouver, B.C., V6N 2W3



~~260-9895~~

April 1987



Dale
McCallum
796-9525

682-7082

Night Rose ellen

Apt, 305 681
6070

2030 Bankley

TABLE OF CONTENTS

	<u>Page</u>
INTRODUCTION	1
LOCATION AND ACCESS	1
TOPOGRAPHY	1
CLAIMS	2
PREVIOUS WORK	2
REGIONAL GEOLOGY	3
CLAIM GEOLOGY AND MINERALIZATION	3
CONCLUSIONS	4
RECOMMENDATIONS & BUDGET	4
REFERENCES	5
CERTIFICATE	6

LIST OF FIGURES

FIGURE 1	LOCATION MAP
FIGURE 2	CLAIM MAP
FIGURE 3	REGIONAL GEOLOGY MAP
FIGURE 4	SHOWING
FIGURE 5	LONGITUDINAL SECTION

INTRODUCTION

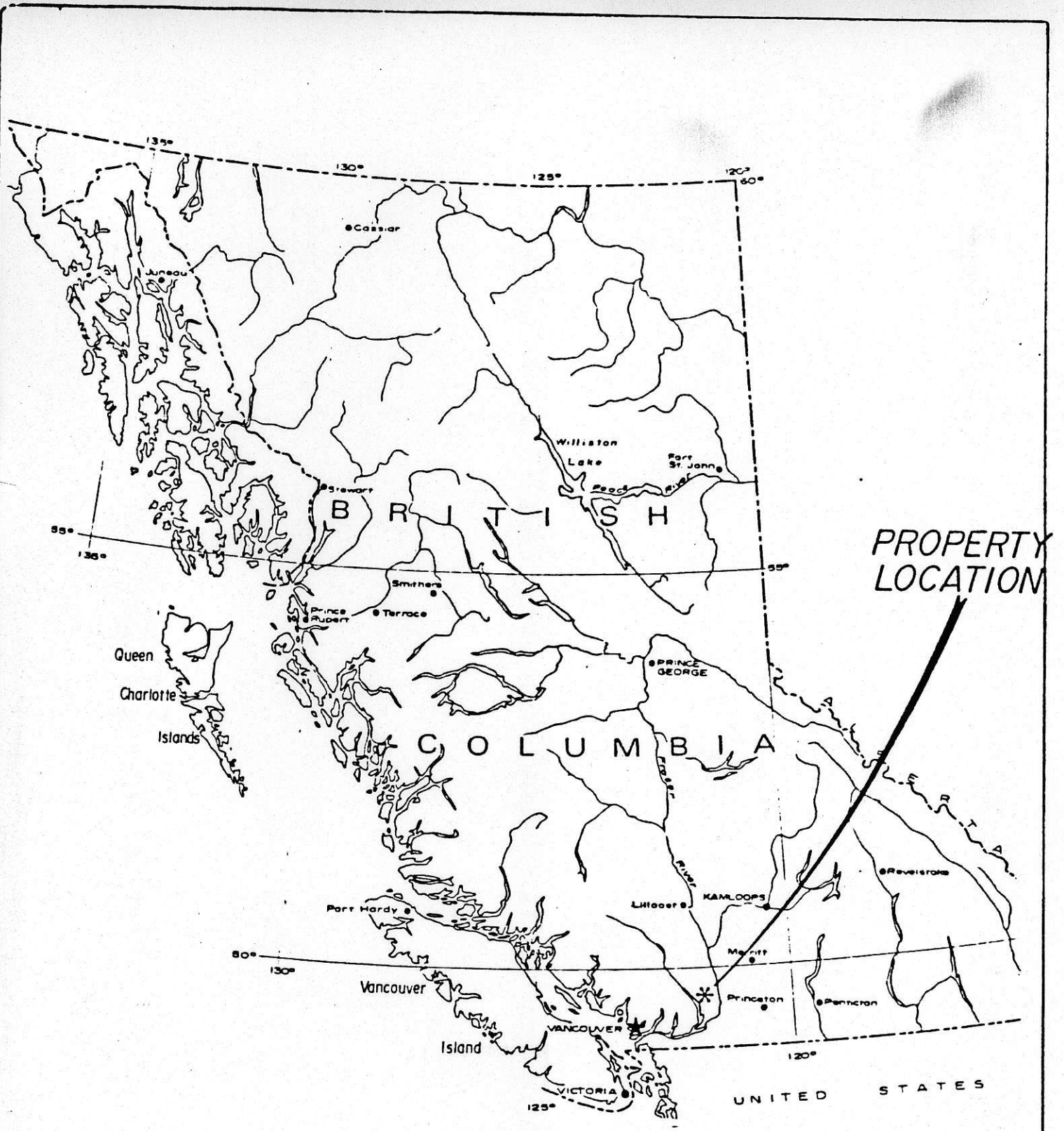
This report is written at the request of Mr. John Dupuis, President, Island Star Resource Corp. to summarize work carried out on the North Fork 1-5 Claims, New Westminster Mining Division, and to recommend program to further explore the property. The writer spent several days on the property in September and October, 1986 examining the structural setting, trenching the main showing, and supervising a Scintrex SE-88 E.M. survey. This report is based on the above work as well as a review of programs carried out by Corporation Falconbridge Copper and others. Interest in the property centres around the occurrence of an impressive massive sulphide showing found within a highly deformed metamorphic package and the possibility that this showing constitutes the distal portion of a much larger massive sulphide body yet to be found on the property.

LOCATION AND ACCESS

The property (Figure 1) is located just east of Harrison Lake approximately 27 km north of the town of Harrison Hot Springs. A gravel road leads from Harrison to the Bear Creek Camp of the Pretty Timber Company. From there a logging road (Cogburn Main) leads north to intersect the North Fork branch at 3.5 km. The North Fork branch winds to the centre of the claim block (and showing) 4.5 km from the turnoff.

TOPOGRAPHY

Elevations range from 365 m (1200 feet) to 1400 m (4600 feet) and the area is, for the most part, rugged and steep. Clear cut logging debris makes traversing even more difficult over portions of the property.



ISLAND STAR RESOURCE CORP.

NORTH FORK 1-5 CLAIMS
 NEW WESTMINSTER
 M.D.

FIGURE 1

CLAIMS

Government claim records indicate the following (Figure 2):

<u>Claim</u>	<u>Units</u>	<u>Record No.</u>	<u>Expiry Date</u>
North Fork 1	9	1243	22 July 1990
North Fork 2	12	1261	24 Aug 1989
North Fork 3	6	2166	6 July 1987
North Fork 4	6	2167	6 July 1988
North Fork 5	9	2168	6 July 1987

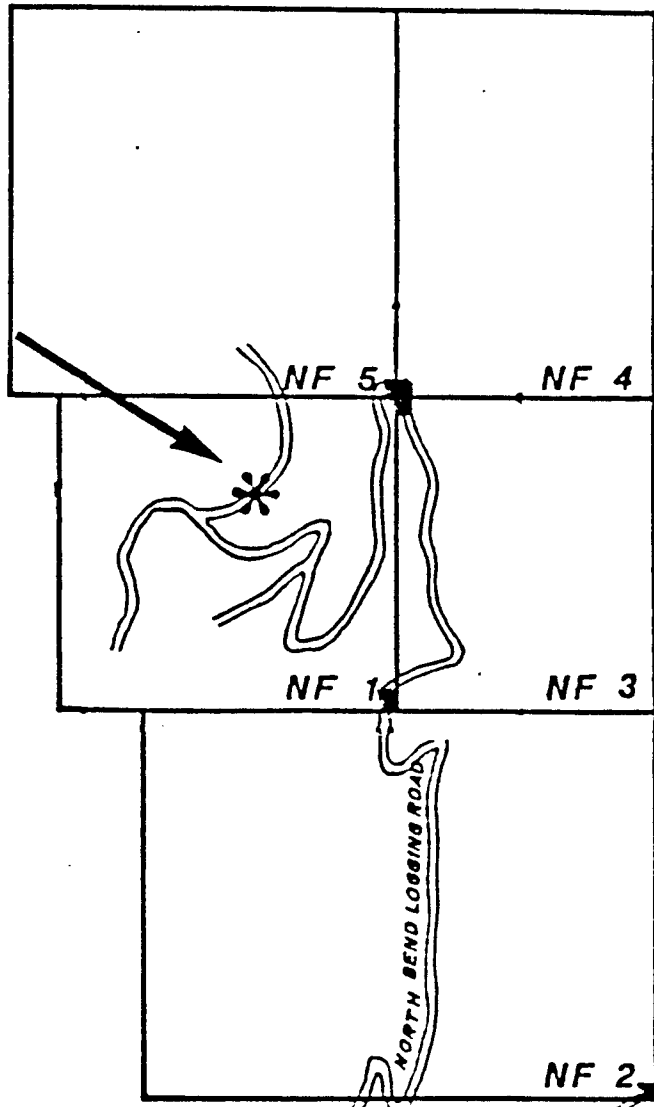
North Fork 1 and 2 were optioned from the stakers by Corporation Falconbridge Copper which staked North Fork 3-5 in 1983. All five claims are currently subject to an agreement between Corporation Falconbridge Copper (as operator) and Island Star Resource Corp.

PREVIOUS WORK

North Fork 1 and 2 were staked in 1981 to cover a massive sulphide showing uncovered by road construction during logging operations. Silver Standard Mines Ltd. optioned the property in 1981 and carried out limited soil geochemistry, self potential, and HEM surveys but dropped the property despite positive results. Orbex Minerals Ltd. subsequently optioned the property in 1982 and drilled four shallow holes. All holes intersected the zone and one hole cut massive sulphide, but no further work was carried out. Corporation Falconbridge Copper then optioned the property in 1983 and carried out detailed mapping, geochemistry, trenching, and a Scintrex S.E. 88 survey. Based on results to date, it proposes to continue exploration jointly with Island Star Resource Corp.

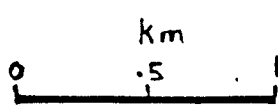


**NORTH FORKS
SHOWING**



MAIN LOGGING ROAD

Cogburn Creek



NTS 92H/12

**Harrison
Lake**



REGIONAL GEOLOGY

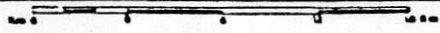
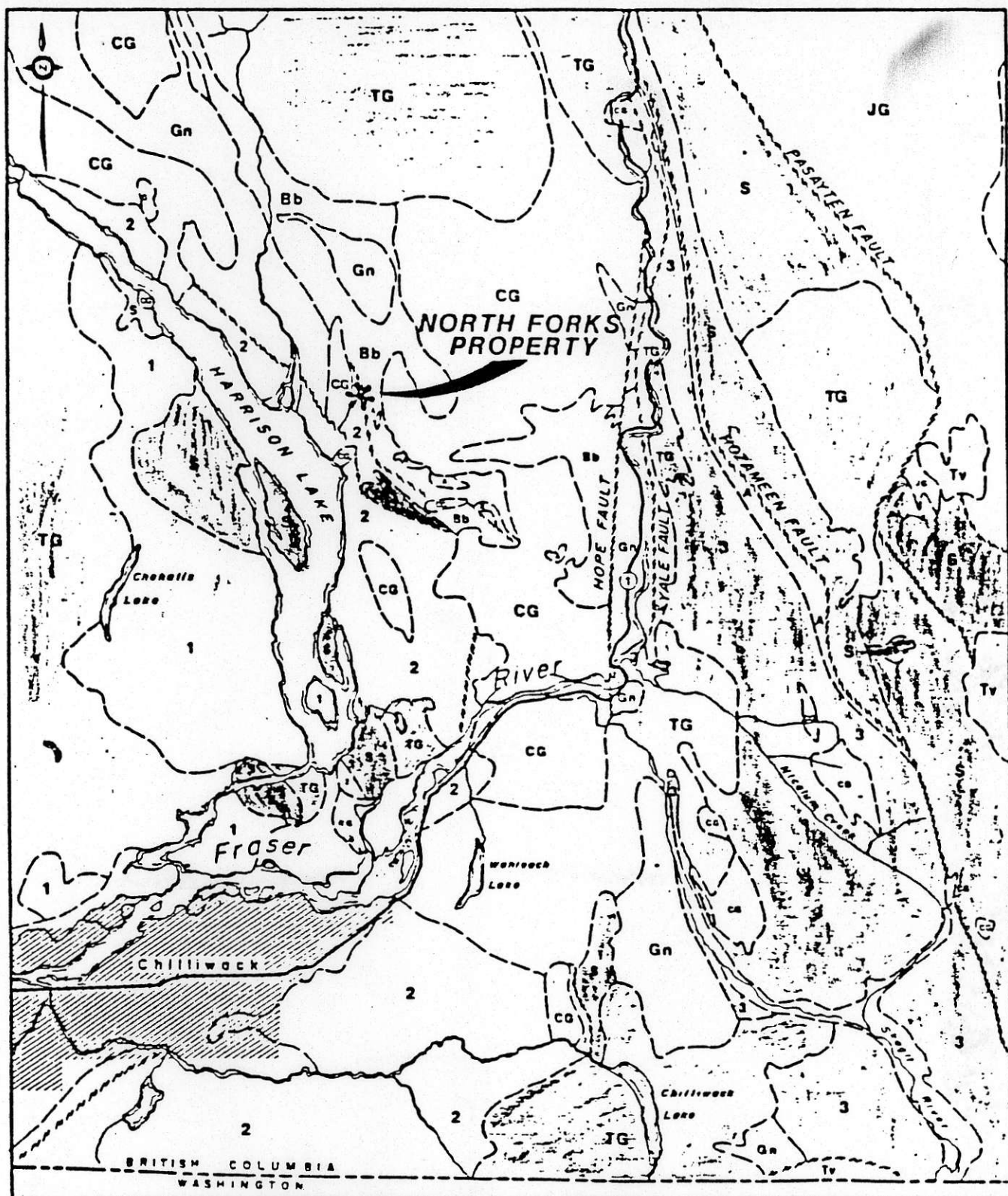
The claims cover metavolcanic and metasedimentary rocks of the Chilliwack group, locally intruded by Cretaceous and Tertiary granitic intrusives (Figure 3).

CLAIM GEOLOGY AND MINERALIZATION

The claims are underlain by predominantly mafic metavolcanics striking approximately northwest and dipping steeply to the east. In the vicinity of the showing the volcanics give way to an overlying argillaceous sedimentary sequence interpreted as stratigraphically upwards to the east (Albino, 1983). The showing thus may occupy an exhalitive horizon that has subsequently been intensely deformed and metamorphosed. Structural examination suggests it is most likely that any deformed sulphide body would have a tubular downward extension with a plunge of 75-80° to the south and be confined to a near vertical plane trending approximately 340°. The S.E.-88 E.M. survey carried out by the writer indicates a conductive strike length of at least 100 m. In conjunction with structural considerations, there is thus potential for a large orebody when projected to depth. It should be noted, in this regard, that Albino (1983) interprets the showing as the distal edge of an exhalitive system.

The known mineralization on the property is mostly confined to the showing and is illustrated in Figure 4. Orbex Minerals Ltd. drilled four holes from the west intersecting the zone less than 60 metres below the showing and obtained the following results:

<u>Hole</u>		<u>Metres</u>	<u>Cu</u>	<u>Zn</u>	<u>Ag</u>
NF-1	massive	3	2.04%	0.98%	9.2 g/t
NF-2	stringer	4	0.19%	-	-
NF-3	massive (pyrrhotite)	1	0.56%	0.66%	-
NF-4	stringer	3	0.23%	-	-



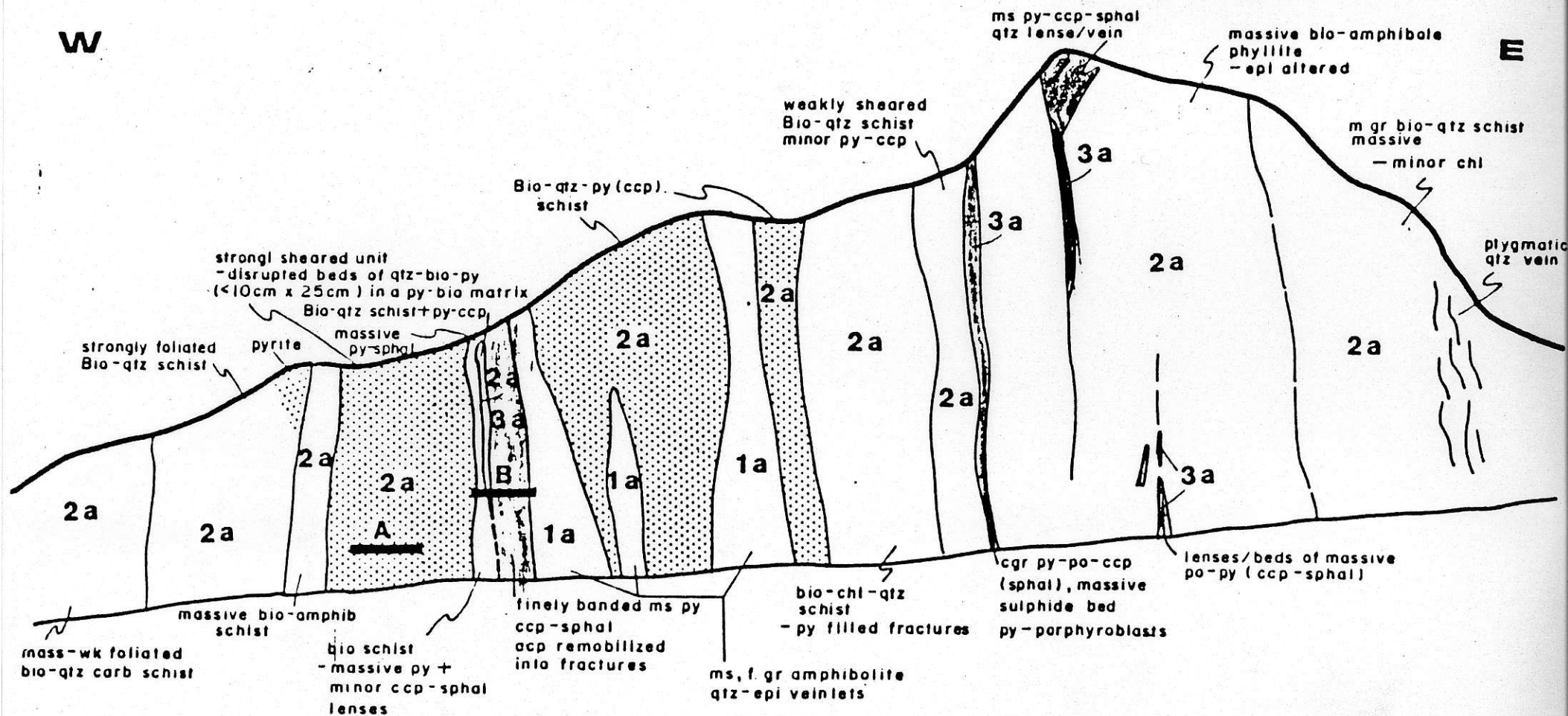
- LEGEND -

1	HARRISON LAKE FORMATION	Gn	Gneiss
2	CHILLIWACK GROUP	S	Sediment (various ages)
3	HOZAMEEN FORMATION	Tv	Tertiary volcanics
TG	Tertiary plutons	U	Ultramafic
CG	Cretaceous plutons	Bb	Schist, amphibolite
JG	Jurassic plutons		

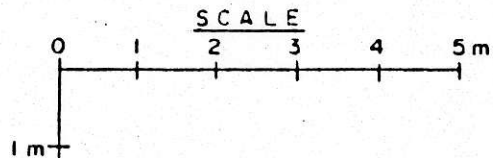
FIGURE 3

W

E



ASSAYS					
	% Cu	% Zn	Ag ppm	Au ppm	width
A	1.78	0.27	23.5	0.28	0.9m
B	3.72	1.41	48.0	0.35	0.8m



REFER TO FIGURE 3 FOR LEGEND (back pocket)
 MINERAL ABBREVIATIONS: bio - biotite, Qtz - quartz
 amph - amphibole, chl - chlorite, epi - epidote, carb - calcite
 ccp - chalcopyrite, sphal - sphalerite, py - pyrite
 po - pyrrhotite

Disseminated Pyrite

NORTH FORKS MASSIVE SULPHIDE SHOWING

CONCLUSIONS

Further exploration in the vicinity of the North Fork showing is warranted and should be directed towards locating a rod-shaped massive sulphide body down-plunge from the showing and to greater depths than tested to date.

RECOMMENDATIONS

It is recommended that drill testing be carried out below the showing in conjunction with off-hole pulse E.M. at depths of 100 - 150 m. Existing geophysical responses up to 50 metres north and south of the showing should also be tested. A five hole program as recommended by Corporation Falconbridge Copper and illustrated in Figure 5 is considered appropriate.

A budget to carry out this Phase I work program is as follows:

Re-establish grid, prepare drill sites	\$ 4,000.00
630 m diamond drilling @ \$120/m	\$ 75,600.00
Pulse E.M. down-hole	\$ 10,000.00
Reporting, supervision, administration	\$ <u>10,400.00</u>
 TOTAL	 \$ <u>100,000.00</u>

950 m

GEOPHYSICAL RESPONSE



SHOWING

2.06, 0.83, 26.0, 0.27

1.7 m

ALSO 3.19, 1.21, 33.5, 0.17

3.0 m

UPPER ROAD

GEOPHYSICAL RESPONSE



PLUNGE OF MASSIVE SULPHIDES at -80°

900 m

P5 * (70m)

NF-2
0.19, -, -, -
4 m stringer cp

NF-1
2.04, 0.98, 9.2, -
3 m massive sulphides

at -65°

850 m

NF-4
0.23, -, -, -
3 m stringer cp

NF-3
0.56, 0.66, -, -
1 m massive po

P3 * PROPOSED DRILLHOLE



Drill Hole with massive sulphides



Drill Hole with non massive sulphides projected to SECTION

% Cu, % Zn, g/T Ag, g/TAu
metres

P1 (110m) *

P2 * (150m)

P3 * (130m)

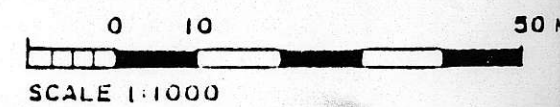
P4 (170m) *

800 m

CORPORATION FALCONBRIDGE COPPER

NORTH FORK SHOWING
LONGITUDINAL SECTION

PROPOSED DRILLING
LOOKING 080°



DRAWN BY: /dq MAR. 1987

DATE: DEC. 1983 473. 92H/12

REFERENCES

Albino, George, 1983. Geology of the North Fork Property and Surrounding Area; for Corporation Falconbridge Copper.

Anderson, J.M., 1981. Geophysical/Geochemical Report on Electromagnetic, self potential and Soil Geochemistry Surveys over North Fork Claims, New Westminster M.D. for Silver Standard Mines Ltd.

Cameron, R.S. and Fox, P.E., 1982. Diamond Drill Program on the North Fork 1, 2 Mineral Claims, Harrison Lake Area, B.C., Orbex Minerals Ltd., Interval Report, 17 p.

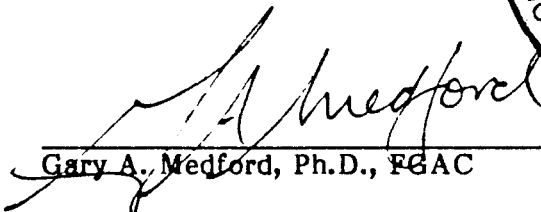
Medford, G.A., 1986. Scintrex SE-88 Traverses on the North Fork Property; for Corporation Falconbridge Copper.

CERTIFICATE

I, Gary A. Medford, with business address at 3894 West 37th Avenue, Vancouver, British Columbia, do hereby certify that:

- 1) I am a consulting geologist and have been engaged in my profession for over 15 years.
- 2) I am a graduate of McGill University with B.Sc. Honours (1968) and M.Sc. (1970) degrees in geology, and have graduated from The University of British Columbia with a Ph.D. (1976) in geology.
- 3) I am a Fellow of the Geological Association of Canada.
- 4) I have no interest, direct or indirect, in the securities of Island Star Resource Corp. nor do I expect to receive any.





Gary A. Medford, Ph.D., FGAC