

Line 8E

827389

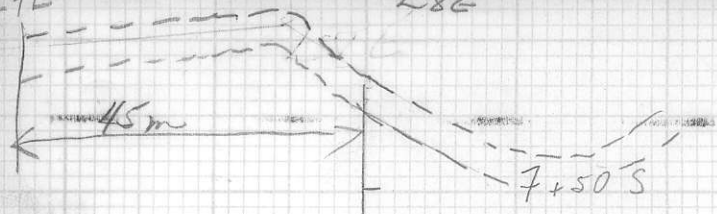
Mt. Sicker-
1983 Field
Sketch Maps
92B/13

mmmm

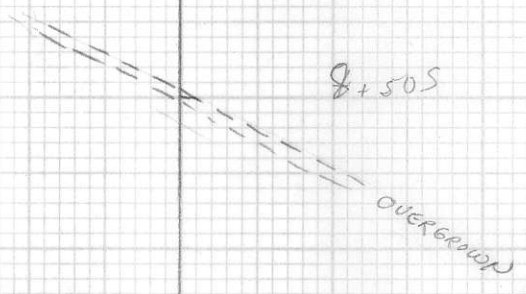
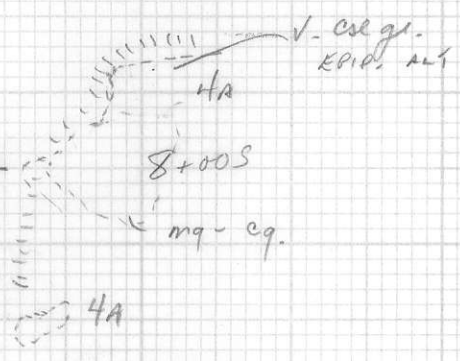
L7E

L8E

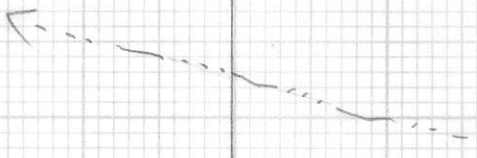
plotted



Section BL
7+80E
HA

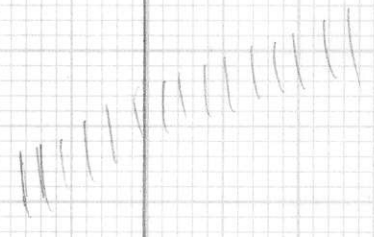


9+00S



9+50S

HA



10+00S

22

L&E

plotted

overgr. - 5+00S

3e? Mylonite
60

overgr. - 5+50S

OVERGR.

- 6+00S

4a? V. STRETCHED -
ALMOST GASEOUS -
Good SLICKS.
115
60

4a

- 6+50S

4a
FLOAT

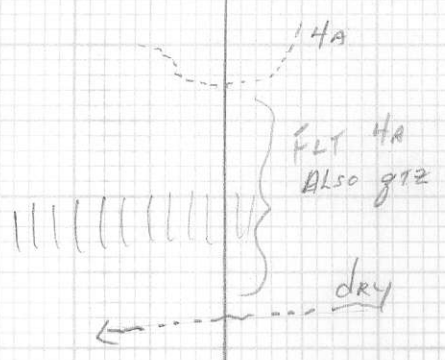
4a
FLOAT

- 7+00S

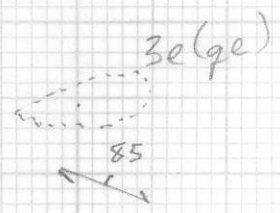
- 7+50S

L8+006

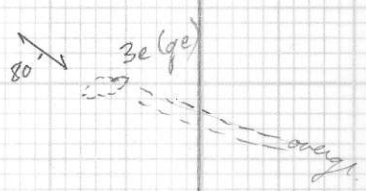
plotted



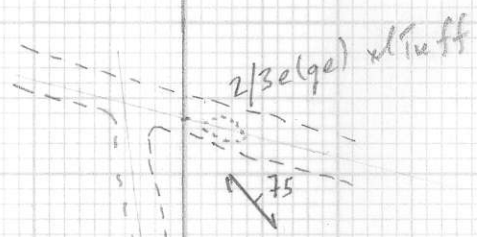
- 2+50S



- 3+00S

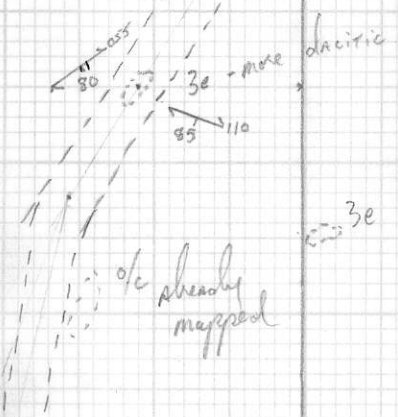


- 3+50S



- 4+00S

- 4+50S



- 5+00S

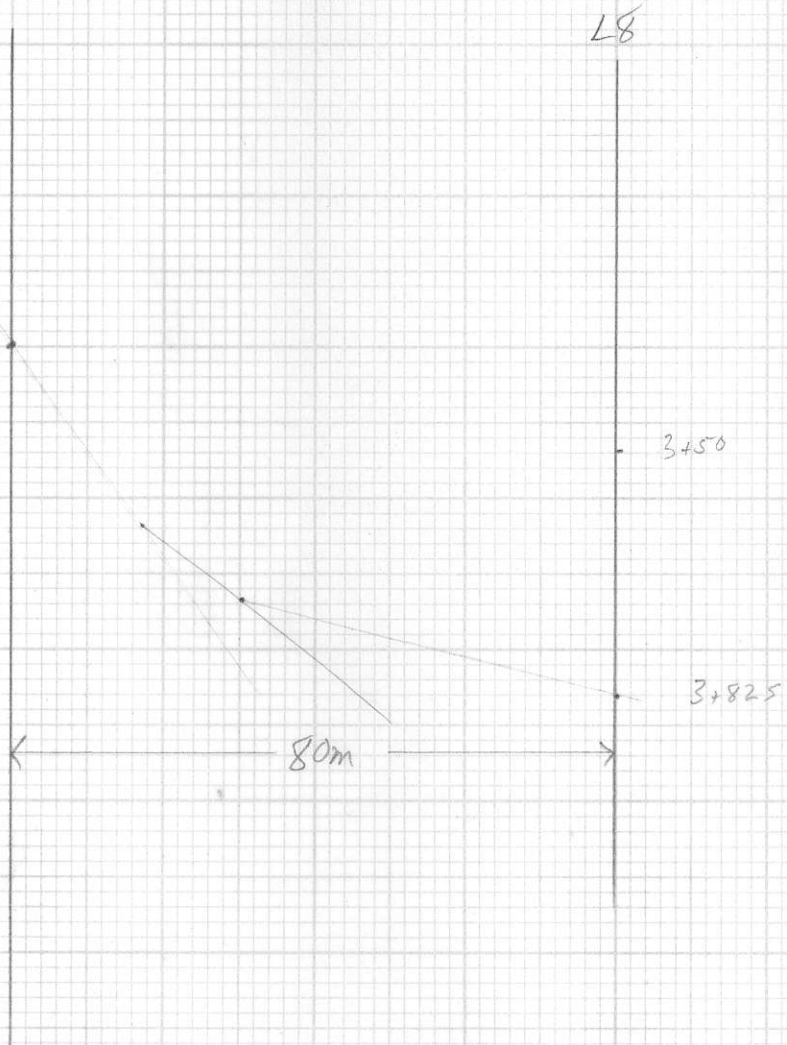
7E
3+505

L8

3+50

3+825

80m



plotted

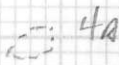
L8+00E

NE is 100m away

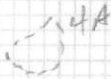
B.L. 0+20 S.

RD OPEN

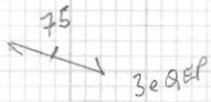
- 1+00S



- 1+50S



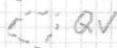
FORESTRY SURVEY LINE (POSS ROAD)



- 2+00S



shaded & striped area



- 2+50S