

Line 7w, 8w

827382
Mt. Sicker 92B/13
1983 Field Sketch
Maps

7w, 8w

8W

5

7W

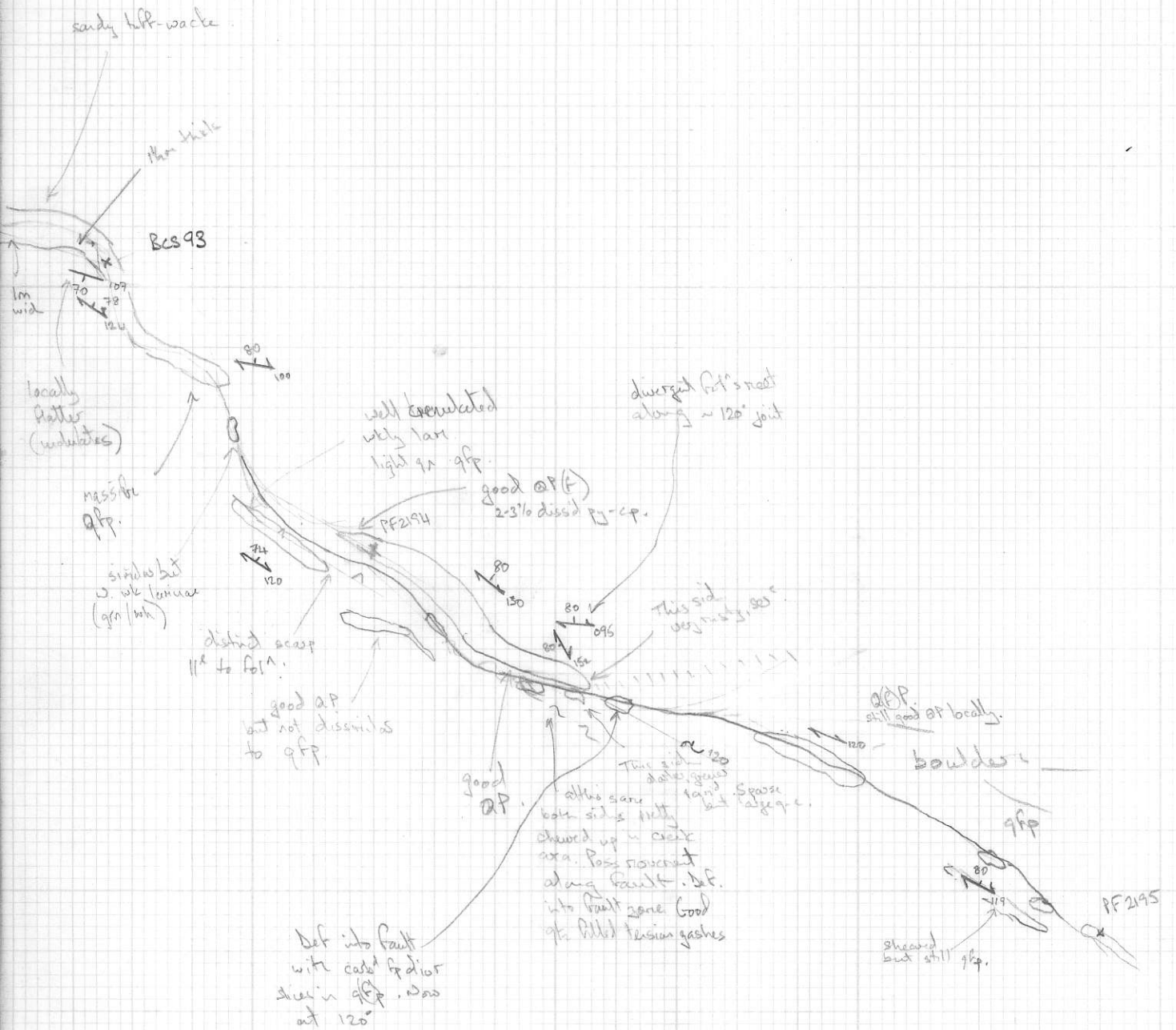
2+50

2N

H50

10

0+50



L8

L7

- 2+505

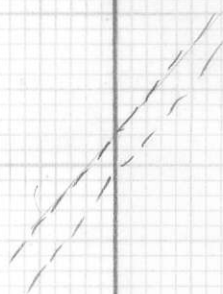
3
4A

2/3e¹
2/2

4A

- 3+005

4A

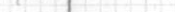


4A

- 3+505

4A

4A



4A

- 4+005

4A



4A

4A

4A

- 4+505

4A

4A

4A 38°

- 5+005

8W

7W

BL

BL

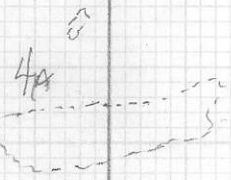
0425-1100
Trel

0+50 S

0+50 S

4A

4A



4A

1+00 S

1+00 S

step

4A

4A



QTZ VEIN

FLAT

1+50 S

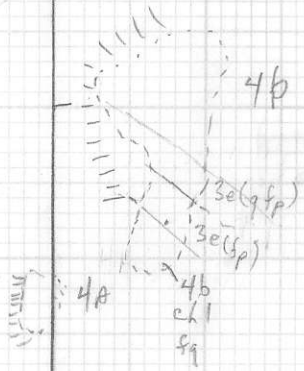
overgl.

4b

1+50 S

2+00 S

2+00 S



4b

3e(gp)

3e(sp)

4b

ch

sq

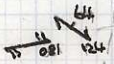
4A

2+50 S

4A

2+50 S

BES 89
dk green gabbro-diorite
BES 90
Not intrusion.



med sheared to mass.
orange weathering dark gabb.
mg. loc. ex knots

intern shear zone

series of intense shear faults
loc with good str. Mass
gabbro or diorite

v. massive diorite
w/ly-nan etc
occ qtz (-calc) vn

mass dior

35

3750

45

4750

55

8W

7W

Handwritten scribbles and notes in the bottom right corner, including the word 'diorite' and some illegible markings.

8

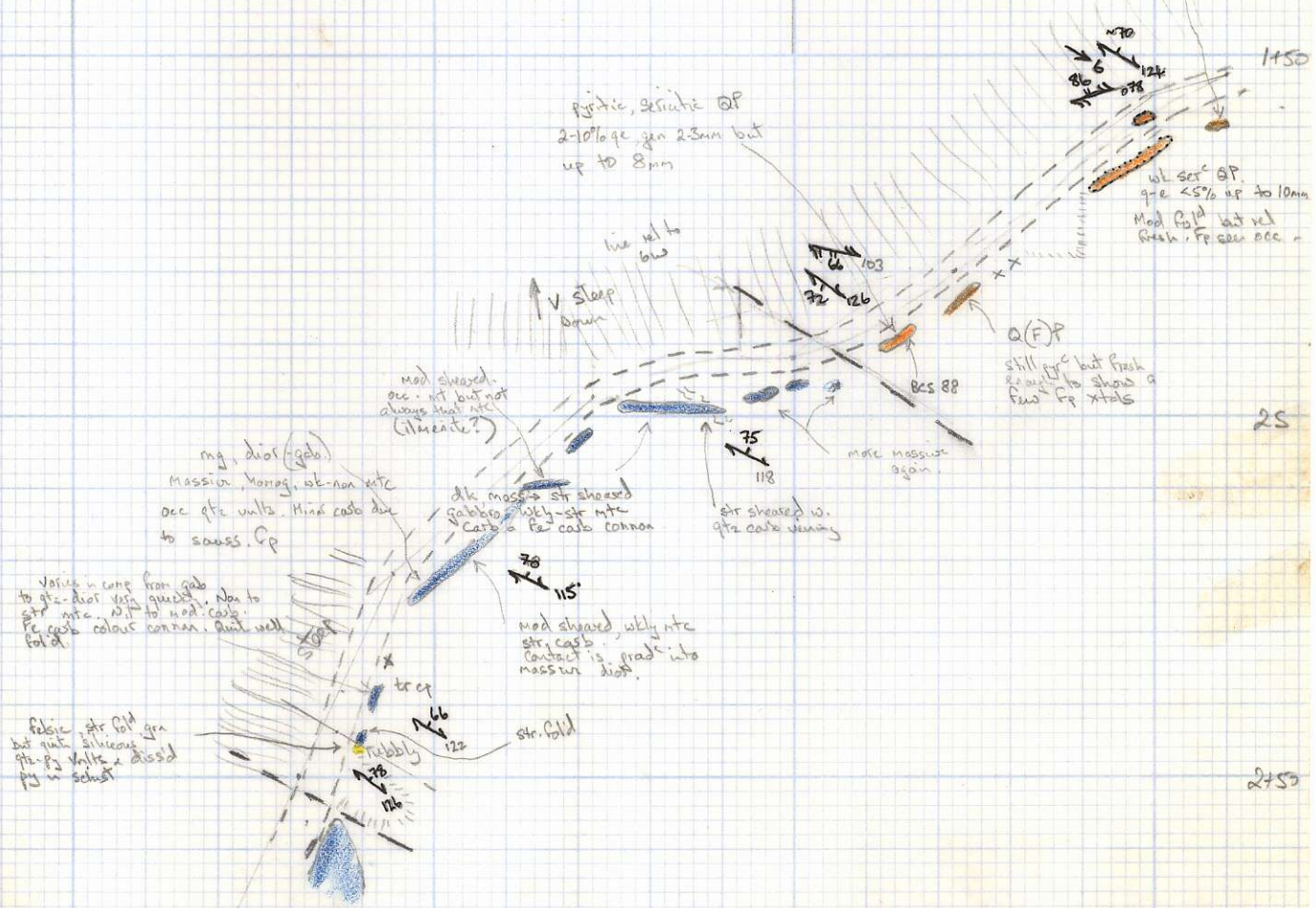
7

0150

1400 S

15

Becomes dk gr, chlc tho
 still quit siliceous. Tuff?
 up to 5% qtz dissd throughout
 2-3% pyrox to 3um. Also acc.
 fp xtals



pyritic, arsenic QP
 2-10% qtz in 2-3mm but
 up to 8mm

wt ser^c QP
 qtz <5% up to 10mm
 Mod fold but not
 fresh. FP acc. acc.

mod sheared.
 acc. not but not
 always that ntc
 (Nevada?)

mg, dior (gab.)
 massive, MORAG, ok-non ntc
 occ pte vults. Hina carb. due
 to sauss. QP

dk masses str sheared
 rubbly w/ly-str ntc
 Carb. Fe carb common

str sheared w.
 qtz carb veins

mod sheared, w/ly ntc
 str, carb.
 Contact is grad^c into
 massive dior.

Varies in comp. from gab.
 to qtz-dior. Vary
 str ntc. No to
 Fe carb colour common. Quite well
 fold.

folitic str. QP
 but quit siliceous
 qtz-py vults. & dissd
 py in schist

8W

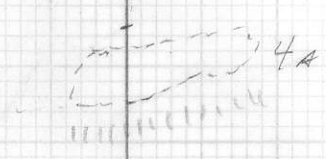
7W

2750

8W

7W

5+00S



5+50S

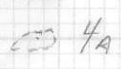


6+00S



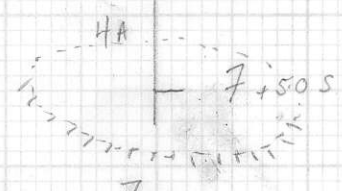
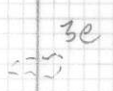
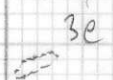
NO % c

6+50S



VALLEY

7+00S



7+50S

8W

7W

L 8+00 W

L 7+00 W

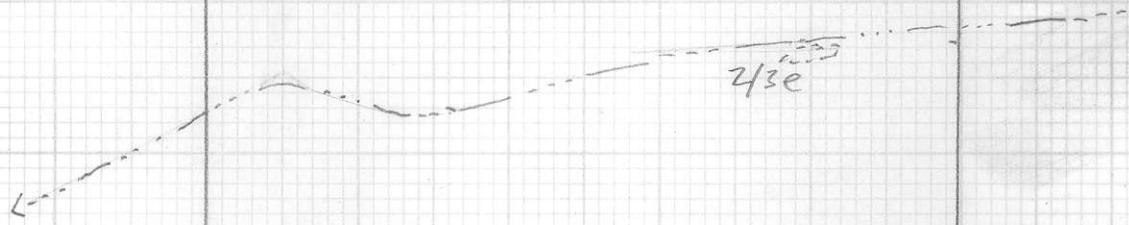
8

7+50 S

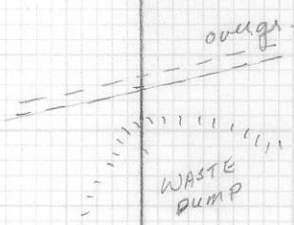
chilled 4b
cht
epi



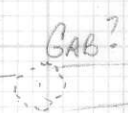
8+00 S



CONTACT
E.S. 30 4b - oosties 2/30
8+50 S



L7
8+44 S



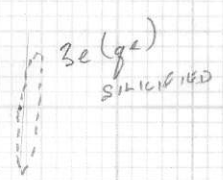
↑
cleared
line

9+00 S



9+50 S

2e? 4A?



10+00 S

8N

7W



750

800

850

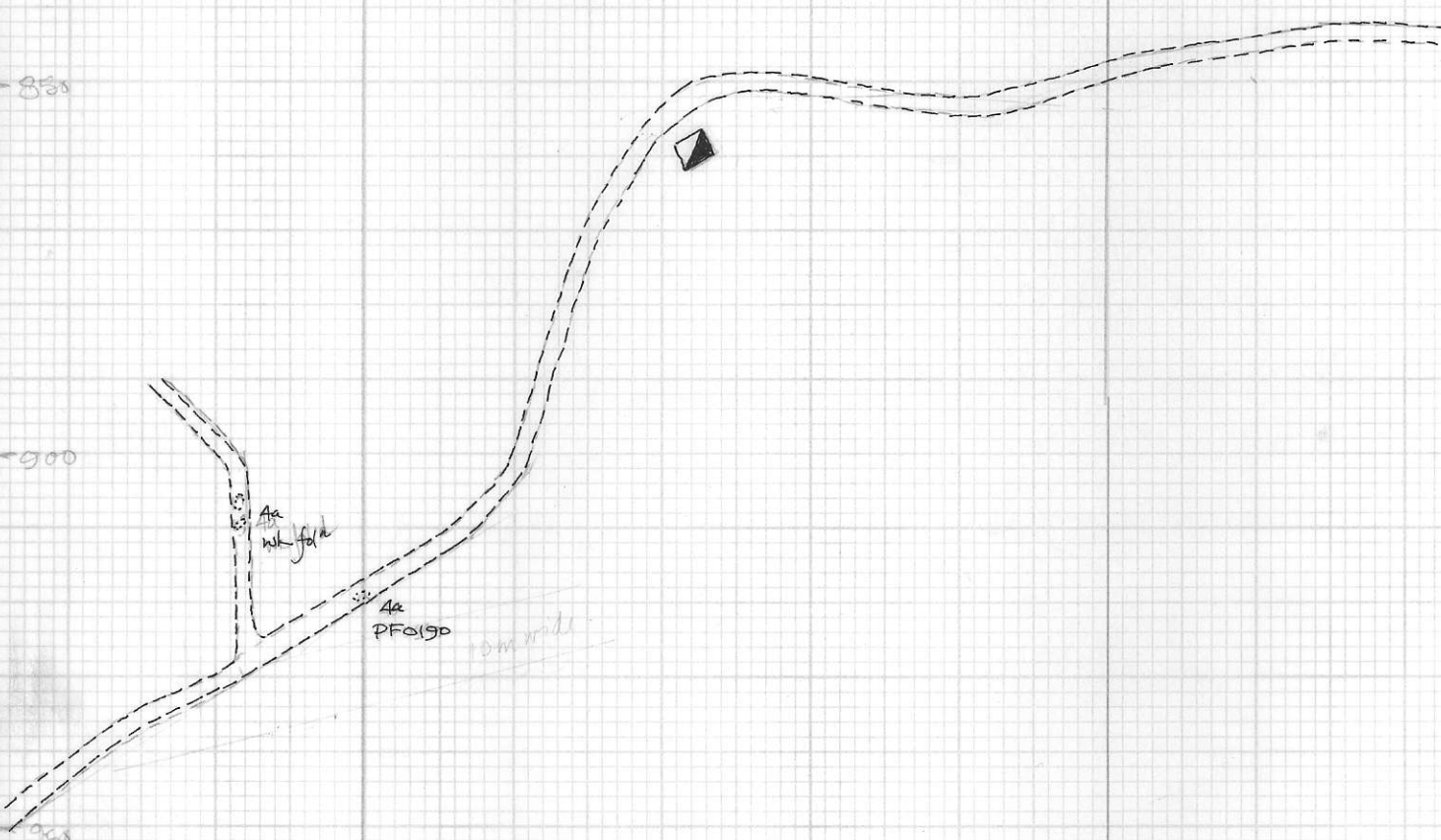
900

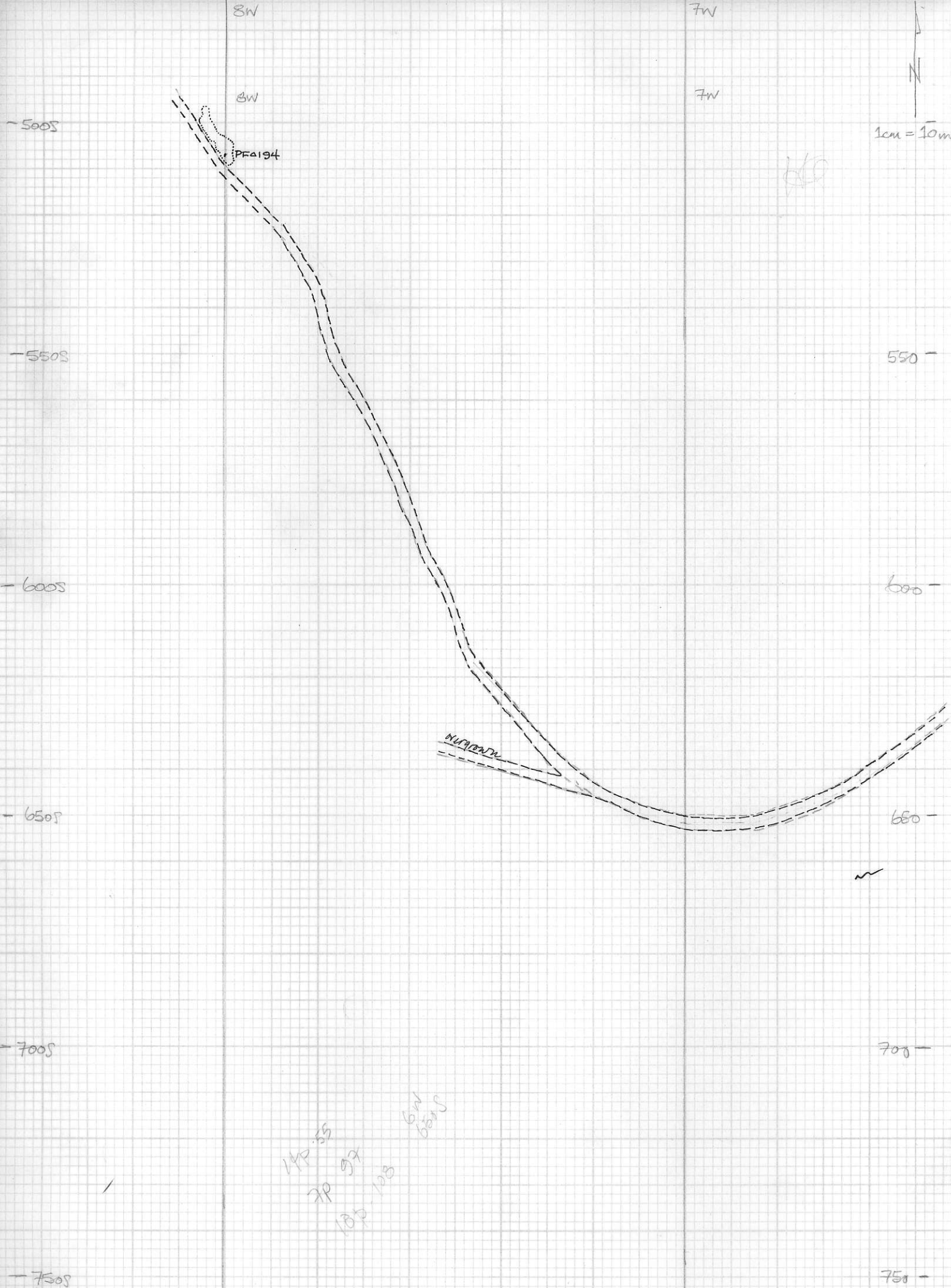
950

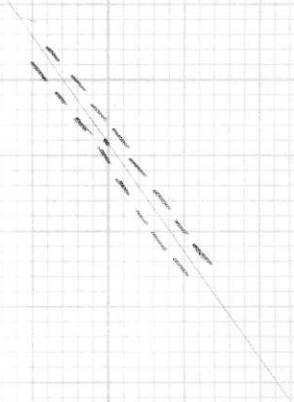
1000

8W

7W







5150

65

6150

75

7150

6w

7w