

Line SW, 6W

827381

Mt. Sicker
1983 Field Sketch
Maps
92B/13

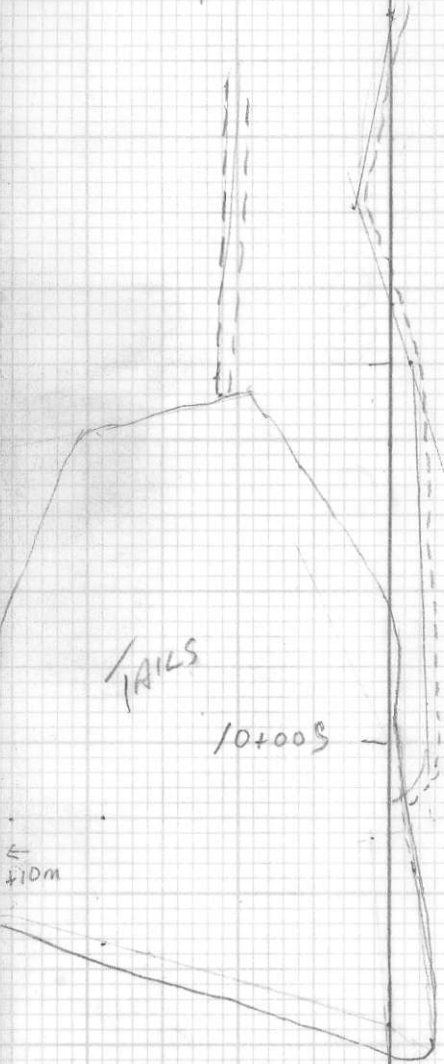
checked & ok.
1:1000

SW, 6W

Aug 10

bw

9+005 -

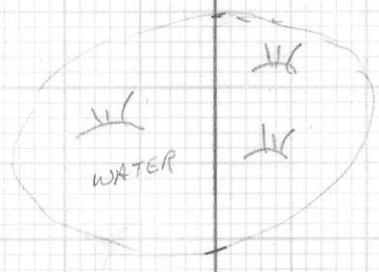


plotted

bw

7+00

L6 @ 6+955 CK →



8

8+00

GOOD WATER FOR STRIPPING FAIR RECHARGE

→ Mill

850

MILL?

TAILS

TAILS

x Dior

900

7w

6w

7w

6w

PF 0169

baalbe ??
DPR

PF 0168

dior

dior.
PF 167

Plotted

dior?
chl. schist
PF 166

11005

RD

PF 164

24005

PF 165

24505

46

Plot

5W

-7+00

750

PF 0141
DIOR?

TO WASTE

SW/BS OK

WASTE
DIO

35m - 800
TO CONCRETE LK RD

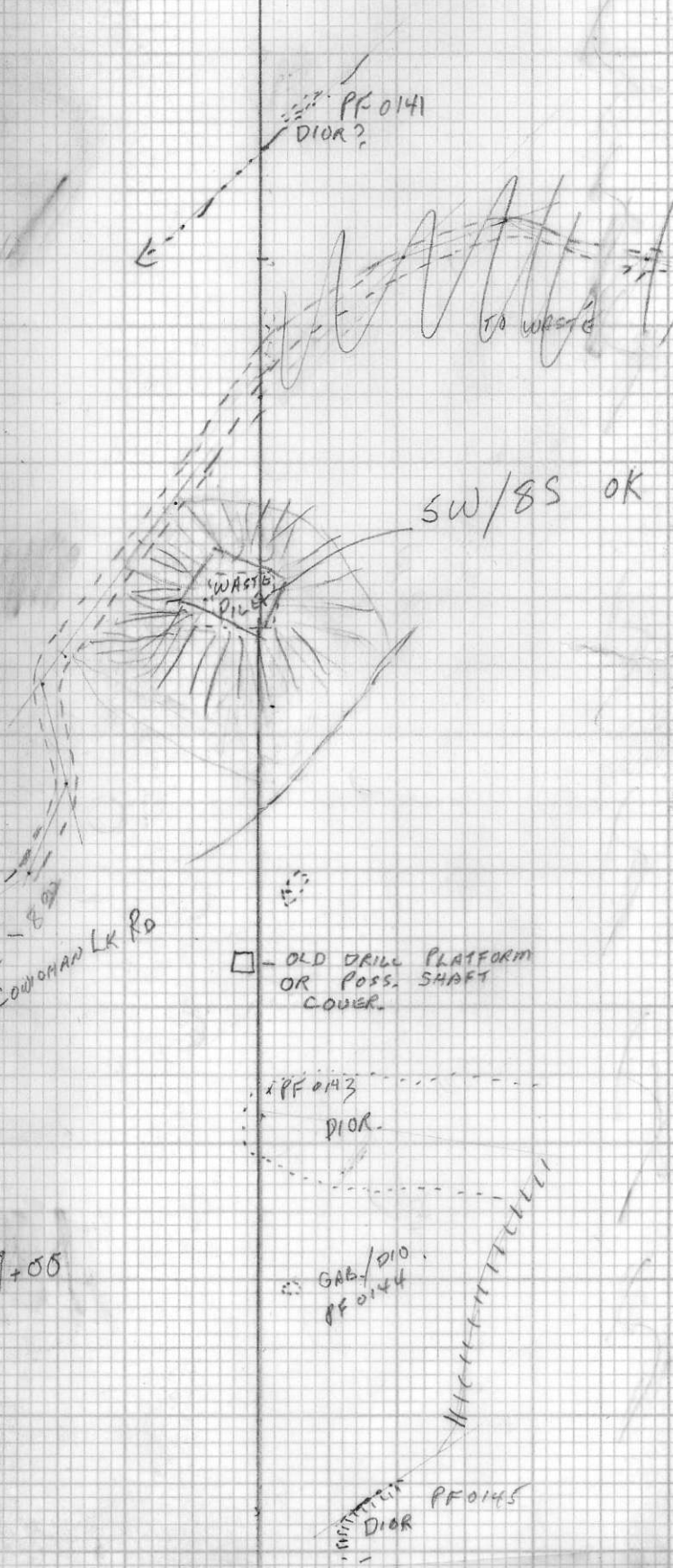
□ - OLD DRILL PLATFORM
OR POSS. SHAFT
COVER.

PF 0143
DIOR.

-9+00

GAB/DIO
PF 0144

PF 0145
DIOR



500

Aug 8

plotted

5+00

9 pax N to 4W/550

57 to line

38 pax rd
61m

x 4W/550P

(585)

6+50

750 on 4 is
20m S of
750 on 5

550 on 4 is
35m S of
550 on 5

7+00



6W



Low = Low

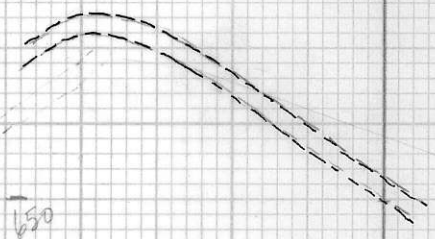
120

600

650

700

750



14.55
 7.92
 10.108

low

7W

600

2+50S

4A

3+00S

→ pole across
to SW 35
RIGHT ON

GAB

ROTTED

DIORITE
4+00S

GAB

GAB 5+00S

plotted

SW

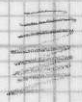
HW

DIOR. (S) PF 0146

DIORITE
+ PF 0149

MAX

9+50



x PF 2028
BOULDER

←
PACED 100m. but
VERY STEEP.
START @ 950 (HW)
& end up 970 (SW)

10+00

6w

plotted

5w

10.5

5w
6s

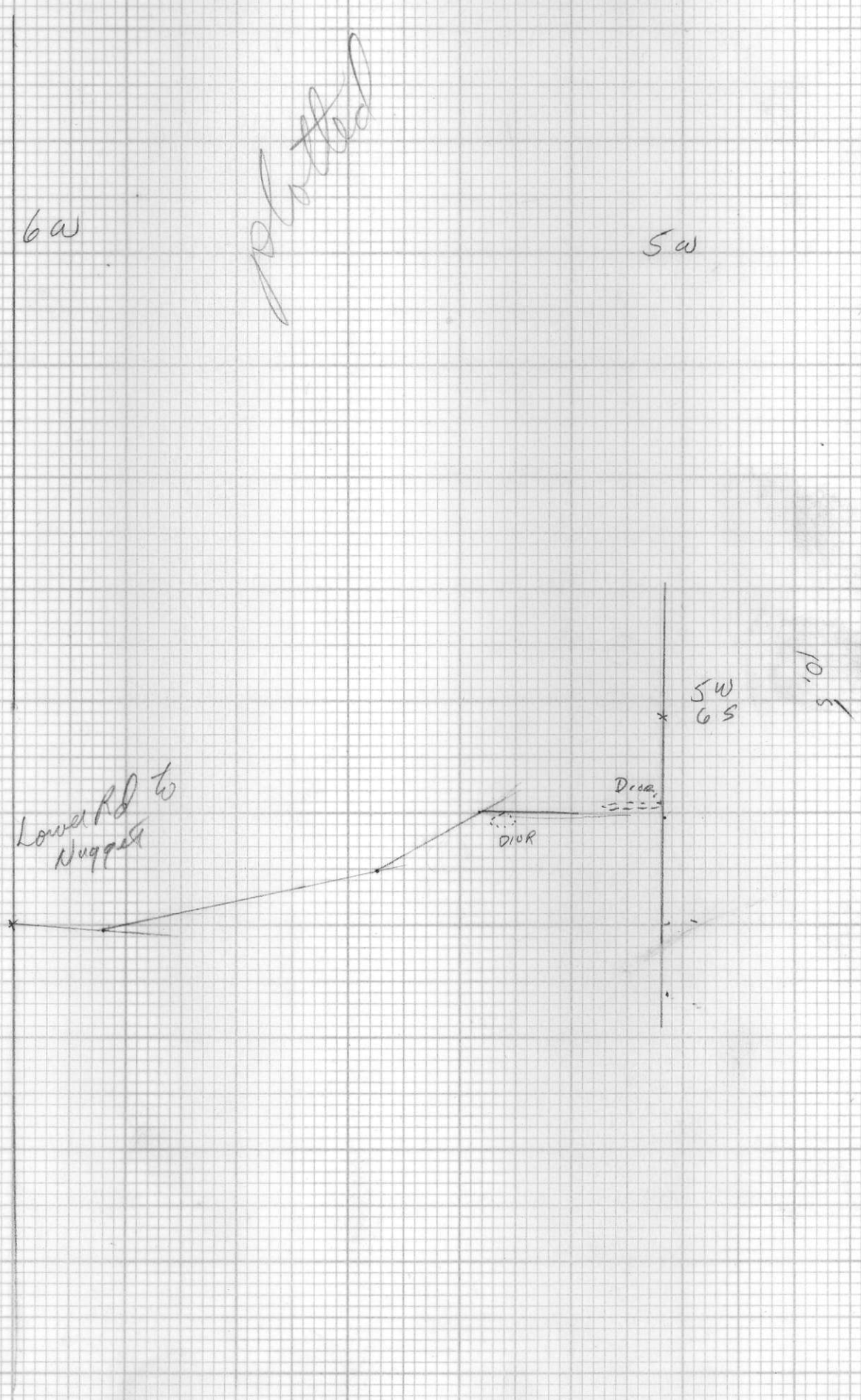
Lower Rd to
Nugget

L6w
6+50s

Deca.

DIOR

6+50 on 6
is 13m N of
650 on 5



6W

5W

plotted

4

-450

-5

550

PITS - 4 4
Poss. H₂O source - 550

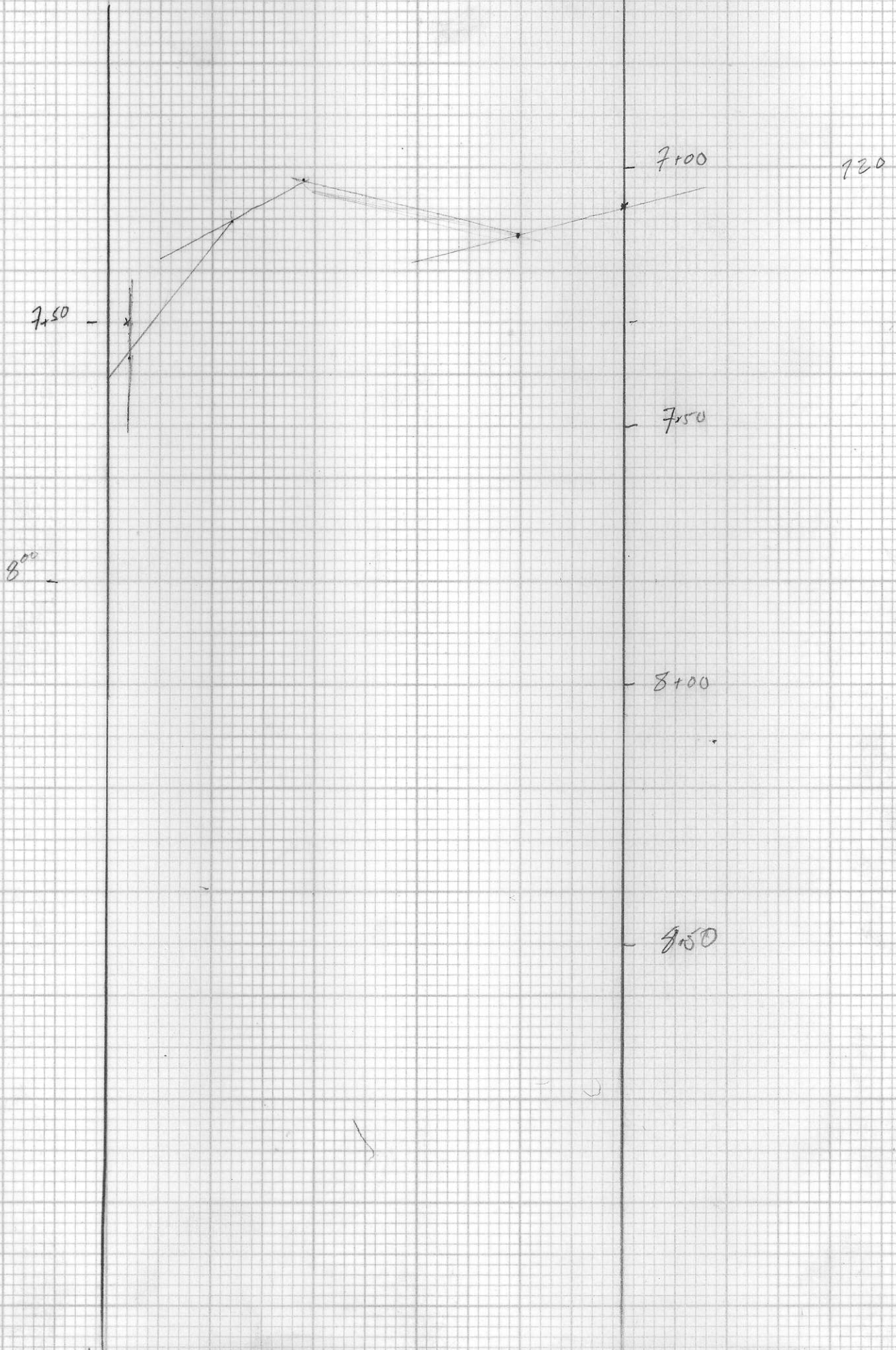


SW

Rd OK line

4W

Aug 8



5400S

SW

4W

⊙ Diok.

5450S

6400S

Diok.

6400S

Diok.

6450S

7400S

GRS

- 250

SW

4a

3+19 S

300 100 m

plot

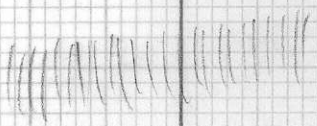
Note:
MAPPING ASSUMES
STATIONS
IDEAL

GAB

- 350

GAB

- 400



- 450



GAB

GAB

5+00 S

7W

6W

5+00S

Dior



- 550

Dior



plotted

6+00S

Dior

Dior



Dior



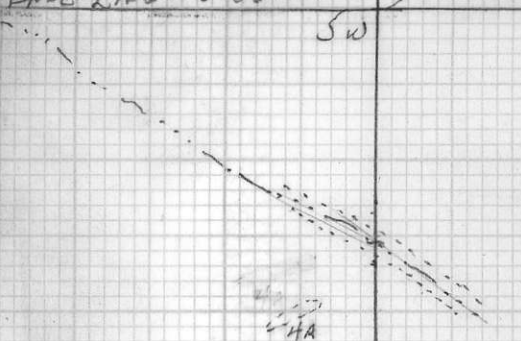
RD (on other sheet)



BASE LINE 0+00

SW SW

SW



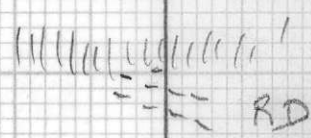
HA

0+50

Dir.



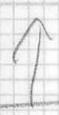
1S



RD

1000

PLOT



PF 0130

3e

150

plot

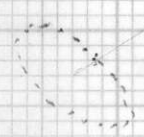
4A

2100S



4A

250

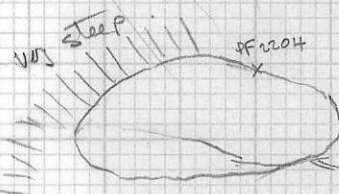


steep down ↑

- 5N

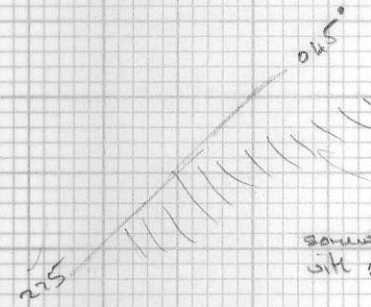
BCS 179

W? or fg dior.
qtz-veined. Mass.
Ap. thin sp.



- very eg graphic gabbro
- highly magnetic
- occ ep knots & numerous
irreg qtz veins

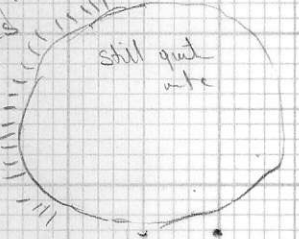
- 4+50



gabbro, not as eg
but still etc.

somewhat chard
with 2-4% dissid eg

talus



n 135° heading @
n 50cm wide with
PJ-eg (Pp)
BCS 180.

- 4N

only with
etc.



here becomes very similar
to dacite xtal tuft. Poss contact.
check char's
May just be that the
gabbro is perhaps
similar.

- 3+50

quiet flat.

slight gully

distinct gully

3N

down
slope

SW

- 2+50N

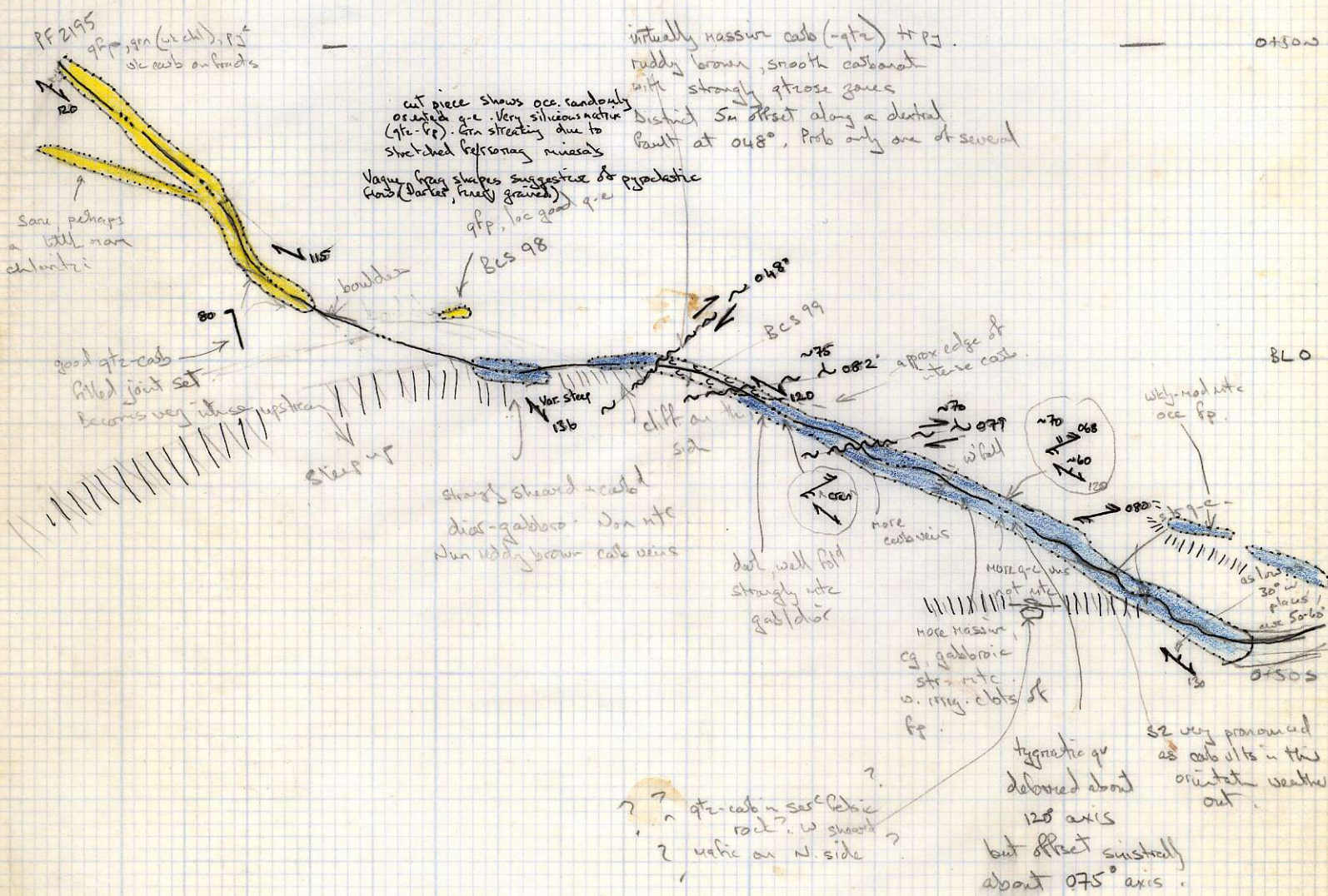
6W

SW

0+300

8L0

0+500



0+50

1/8

SW

quite homog seric fcl's *

interbeds? of dark grn
with laminated material
Cut spec. - probe lap. tuff
lineation 10x + in fol' dir

Very cherty rhyt. loc.
w/ pink bands. More
conspicuous bands are rounded.
Dip slip maps $\pm 20^\circ$ about vertical

accumulated at more
seric than to E. 5-8%
to 8mm. 4% Pt.
slid strongly fol.

still non porph' @P
(no grc visible in cut surface either
just w. mass, quartz, thymolite)

now darker, more heterog.
more chlc.

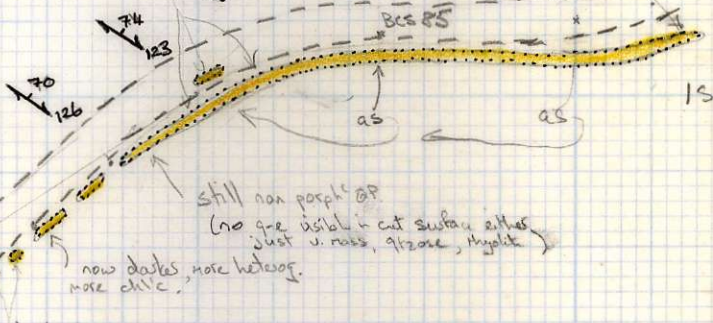
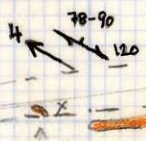
back to homog
V, felsic

darker, more chlc
+ 2% Pt

dark grey/grey? tuffaceous?
chlc @P. Occ pyrite
bands. Has some laminae
as stretched frage. 1-2% Pt
Bcs 86

pos. fig. 7
OR

2/8



1+50

w

250



2+50

SW

SW

- 7N

- 650

Fresh gett slope
 W & W. started here

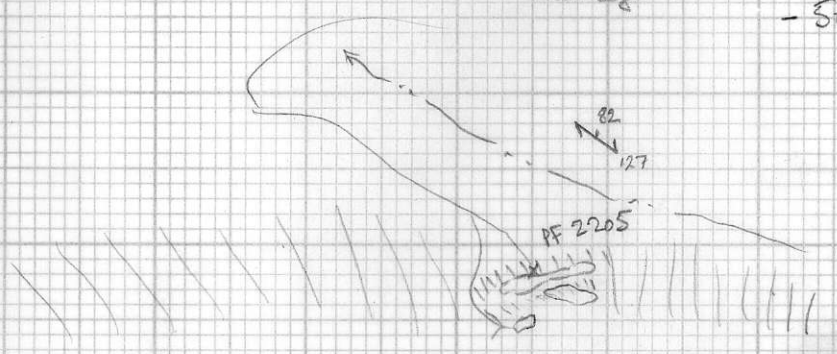


- 6N

open adder occ fir
 Ferry floor
 boundary fill

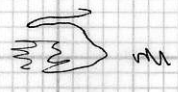
- by Myokit, Poss baked. No sh. 9-eyes
 best poss for transport
 fairly massive but a distinct if weak
 cleavage

- 5750



5N

6W



5W