

89-L-1001  
also a lithic sample  
for cutting

June 3, 1989

L124+00W

103+50N

Gabbro, hornblende; medium green, medium grained,  
90% massive, minor cross-cutting quartz veins, no  
distinctive structure to qc.

1:100

L124+00W

1:100

89-L-1007

Amphibole gabbro, fine grained, moderate to strongly foliated; well developed sericite  
and minor chlorite

107+00N

89-L-1007

72N  
106

101+97

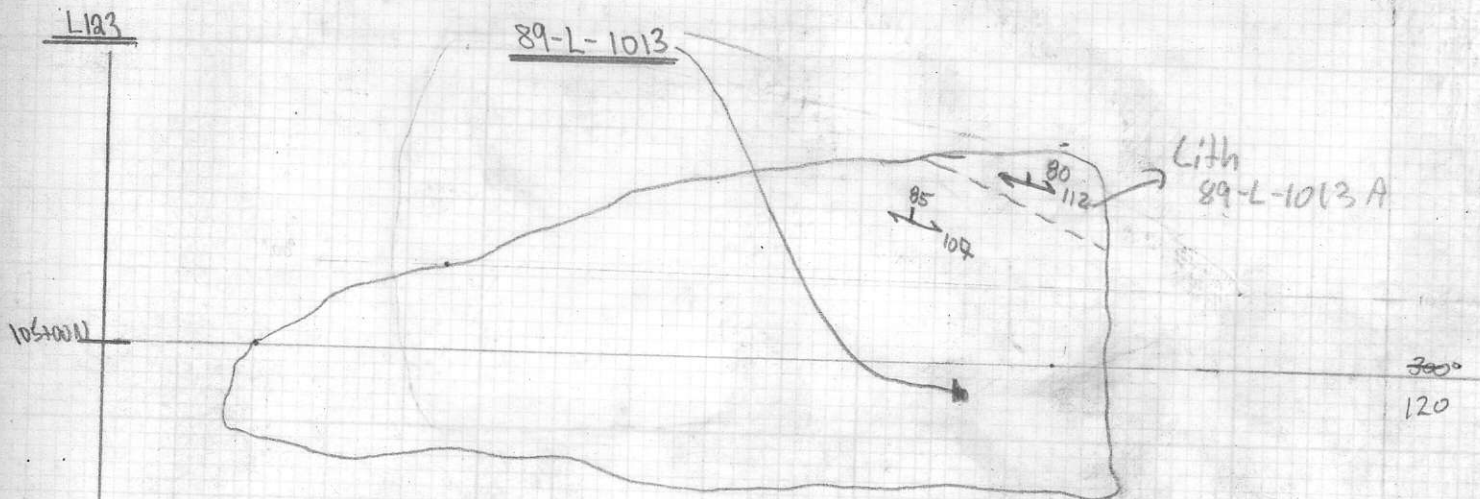
90° E 18.00m

1989  
827302  
Copper Canyon  
Area 92B/13

Start 89-L-1009 (last Sample June 3, L-1008)

June 4, 1988

1 cm = 2 m



89-L-1013 → QFP Felsic Tuff, medium grained, QE to 2mm

89-L-1013A → Finegrained Felsic Tuff

June 27/89

V. 1000

L97+00

Page 1



103+00 Line Ends at 103+00W

No %

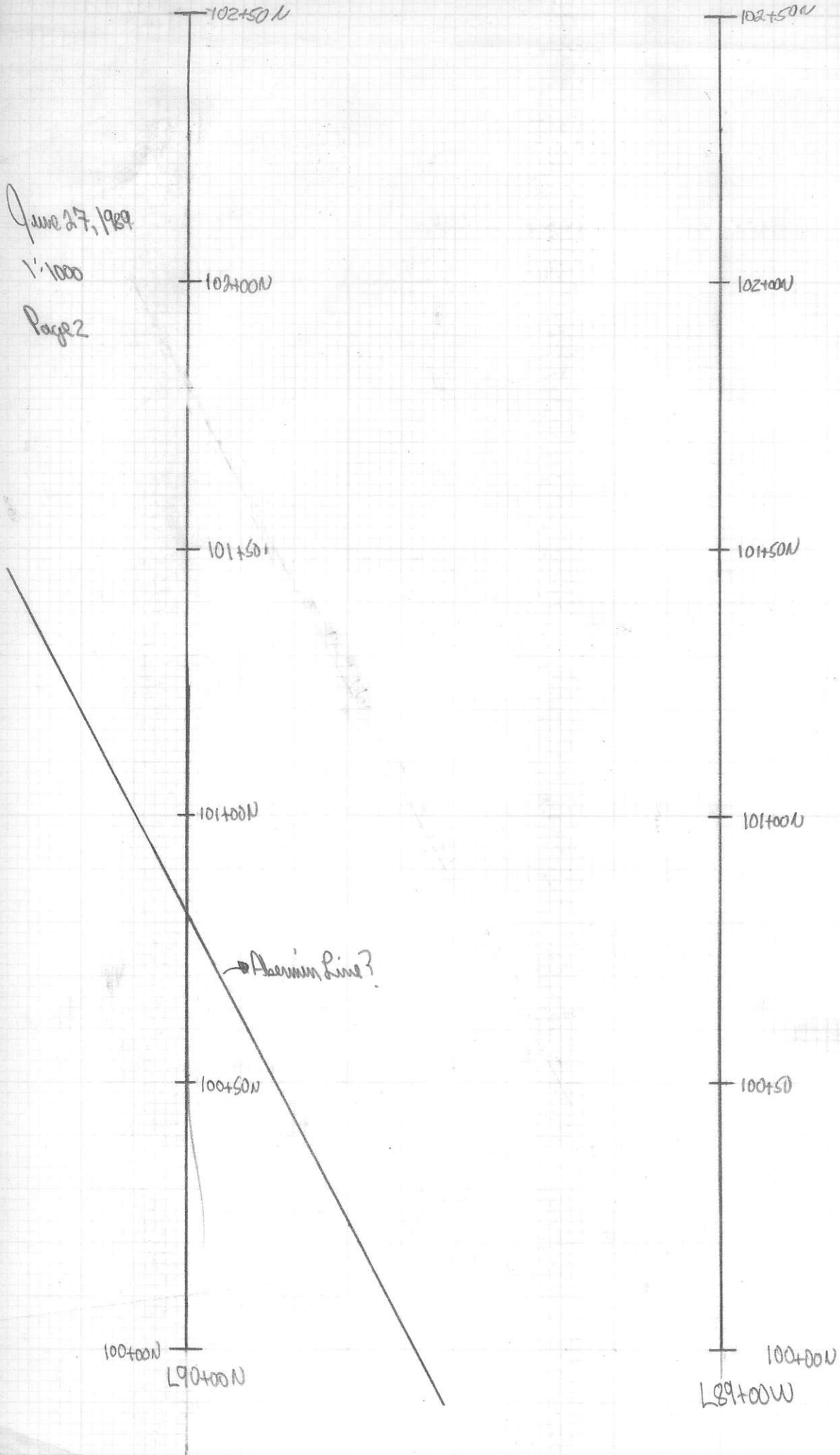
102+50

102+00

June 27, 1989

1:1000

Page 2



Kidd Creek  
L 43+00  
at 8+205

Smart 7/89  
Page 3  
1-1000

105+00

105+00 N

104+50 W

104+00 N

103+50 W

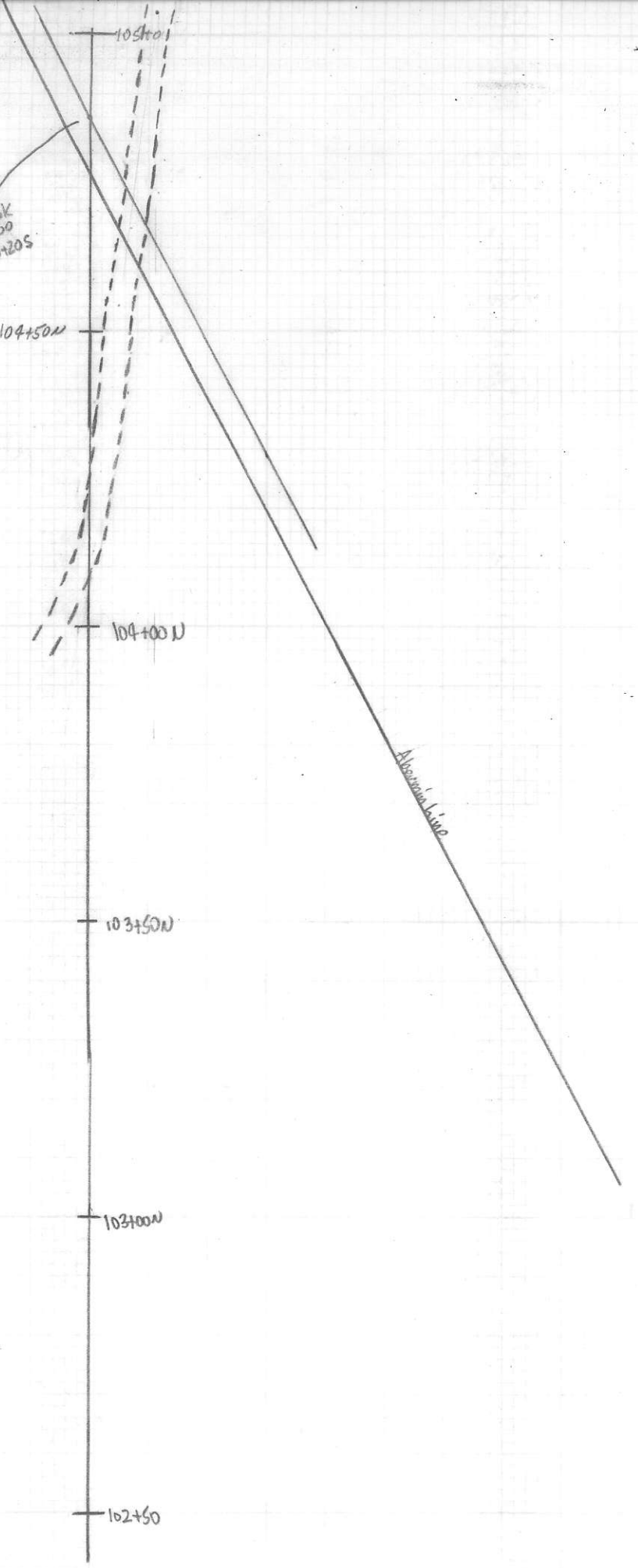
103+00 W

102+50

L 90+00 W

L 89+00 W

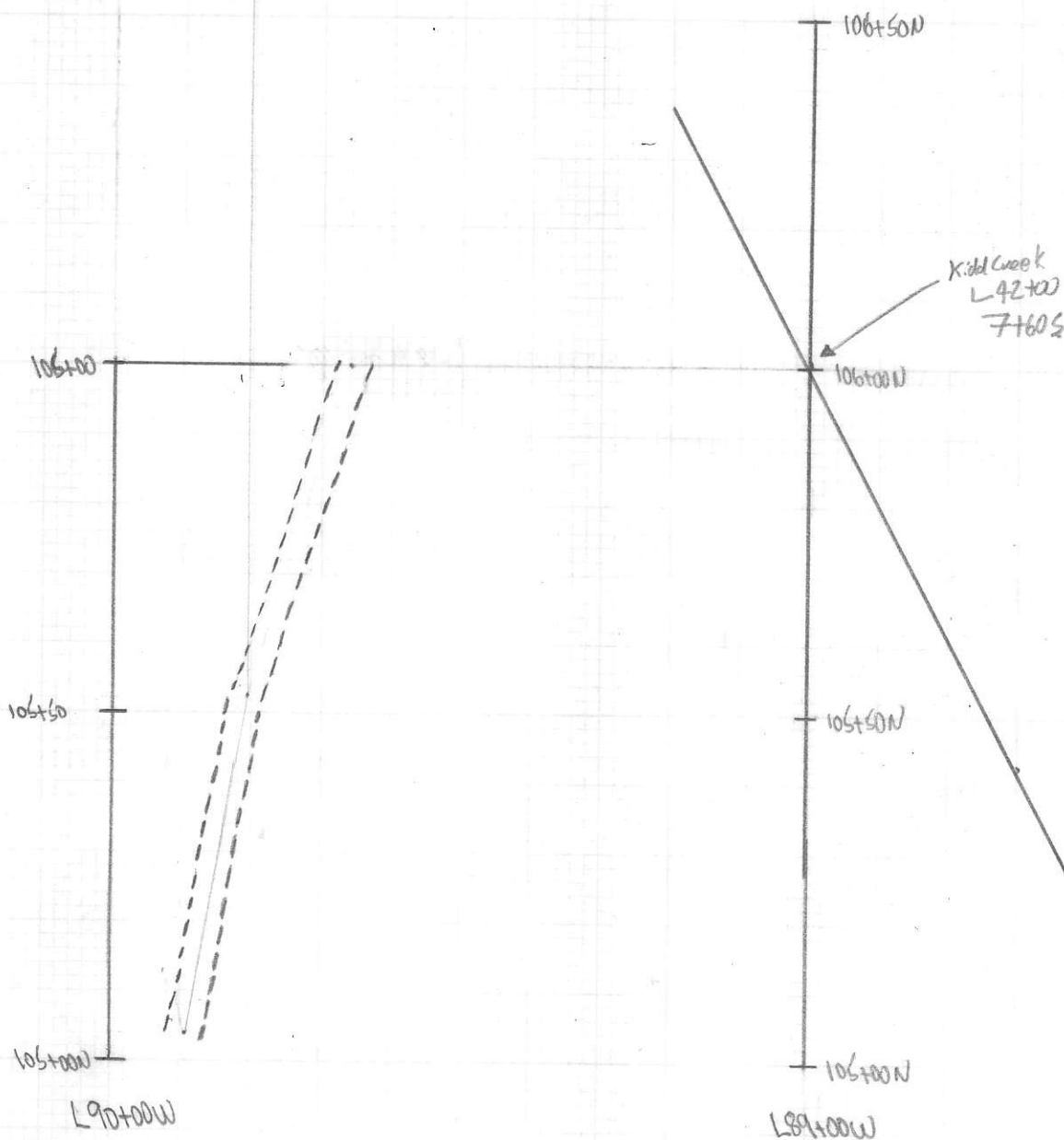
Abandoned Line



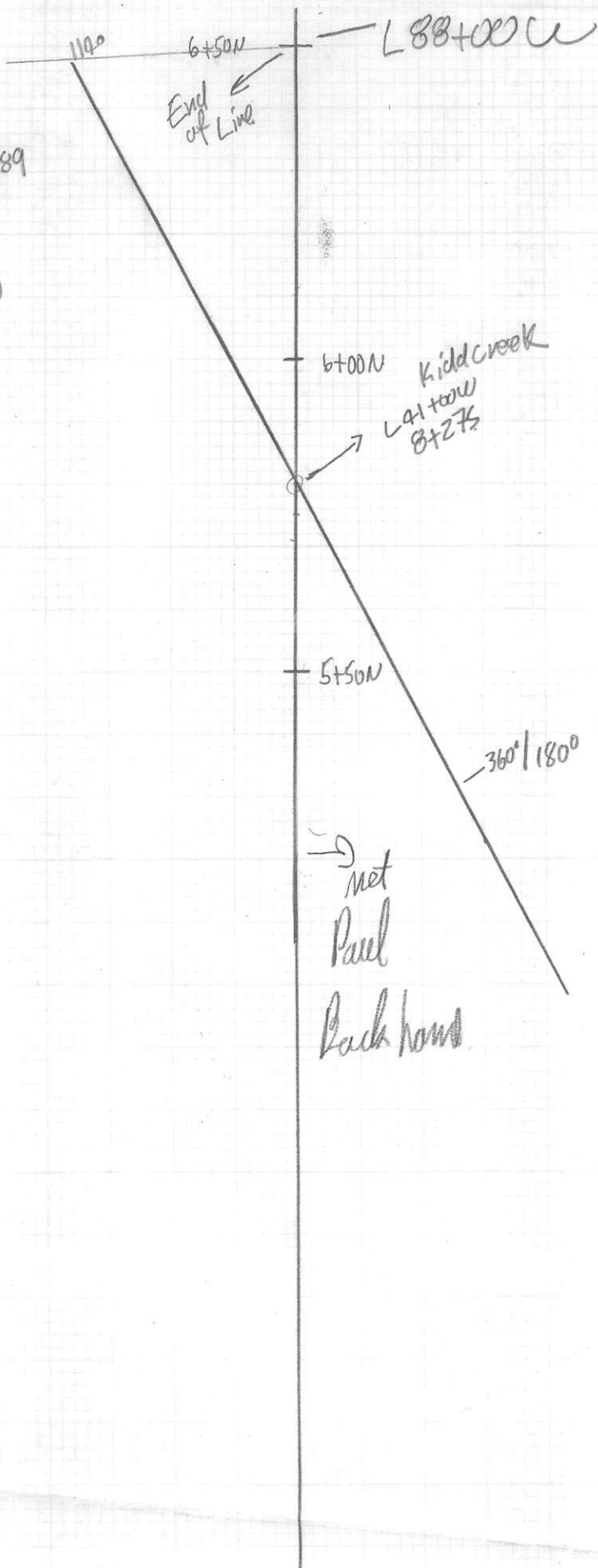
June 27/89

Page 4

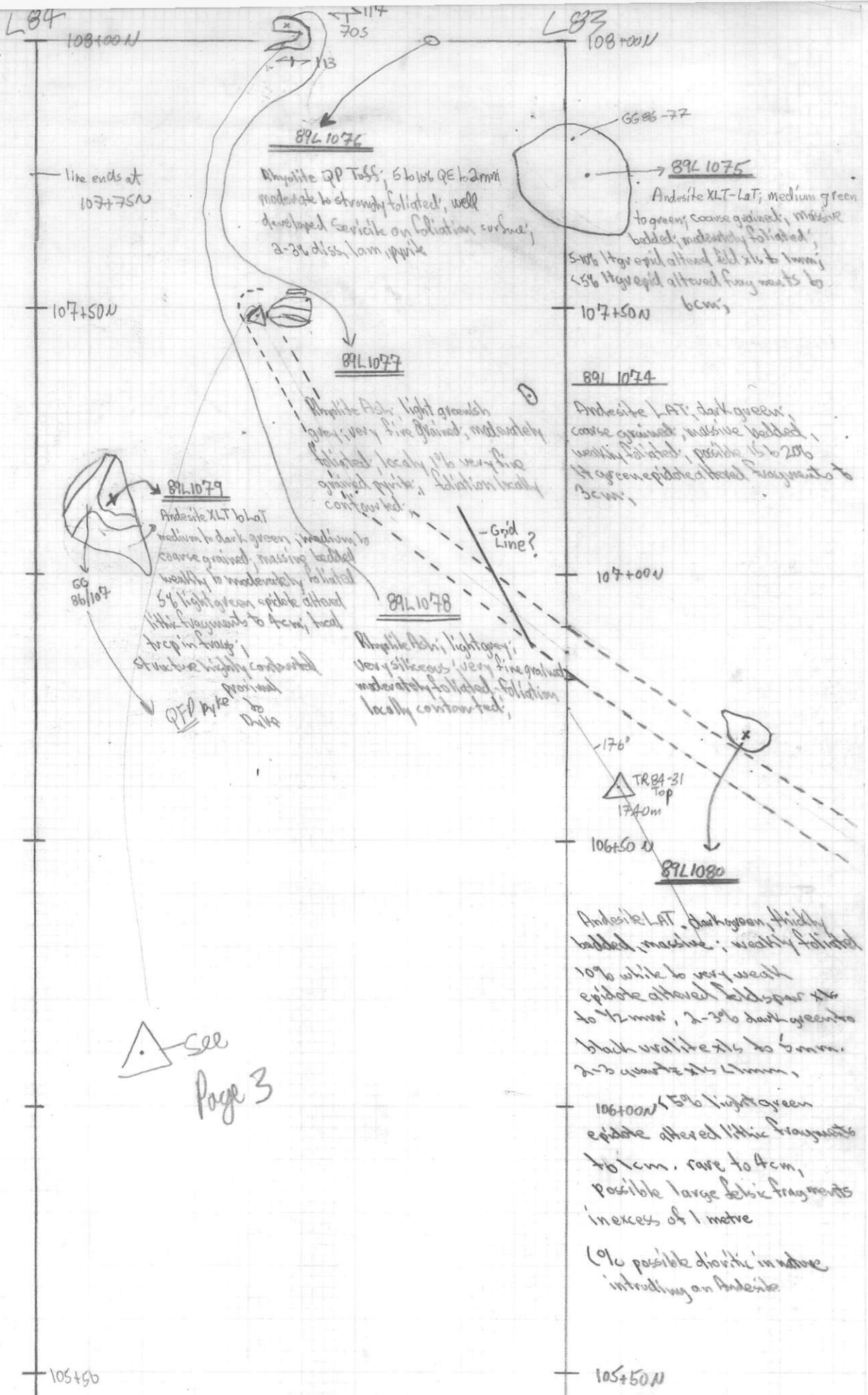
1:1000



Surv 27/89  
Pages  
1:1000

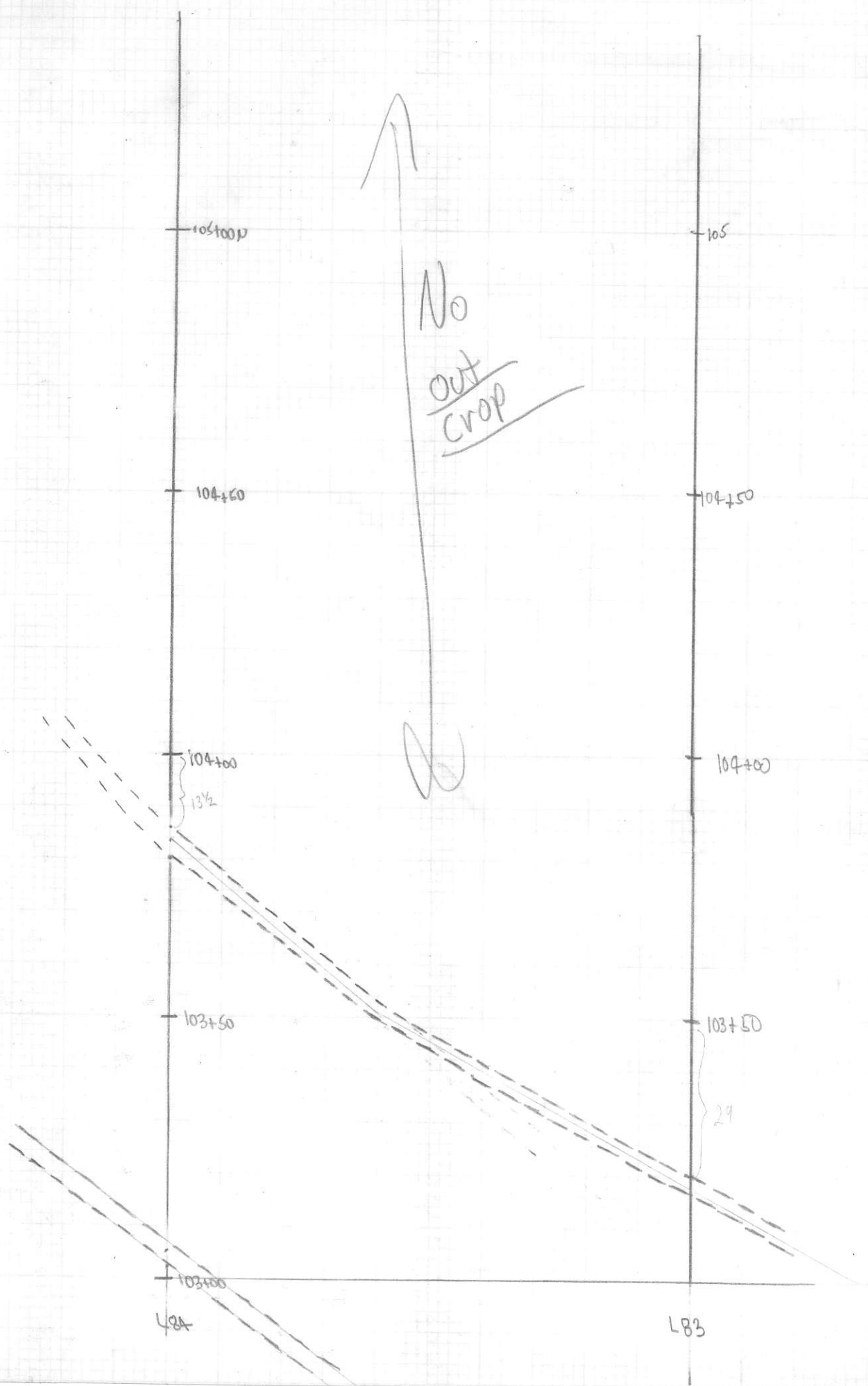


June 30/89  
 East Grid  
 1:1000  
 Page 1  
 L83/84W  
 July 5/89





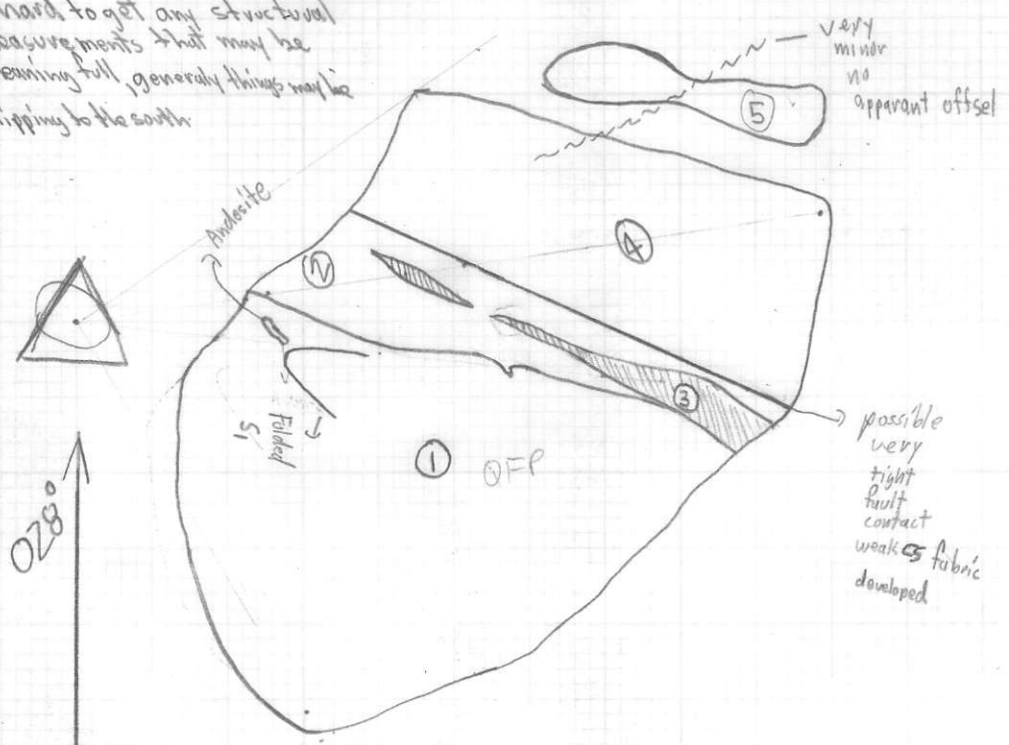
June 30/84  
1:1000  
Page 2



July 6/89

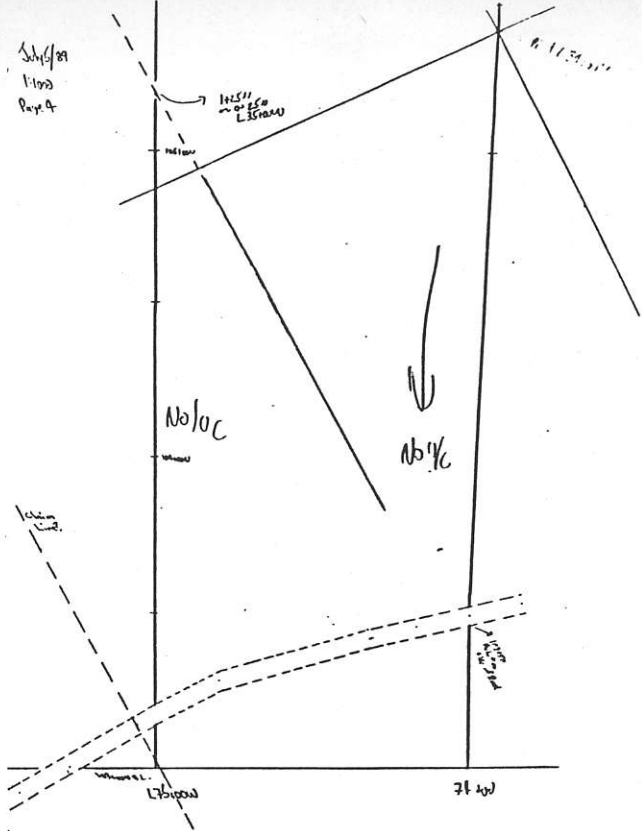
1:100  
Page 3  
Paul 7/8/77

hard to get any structural measurements that may be remaining full, generally things may be dipping to the south

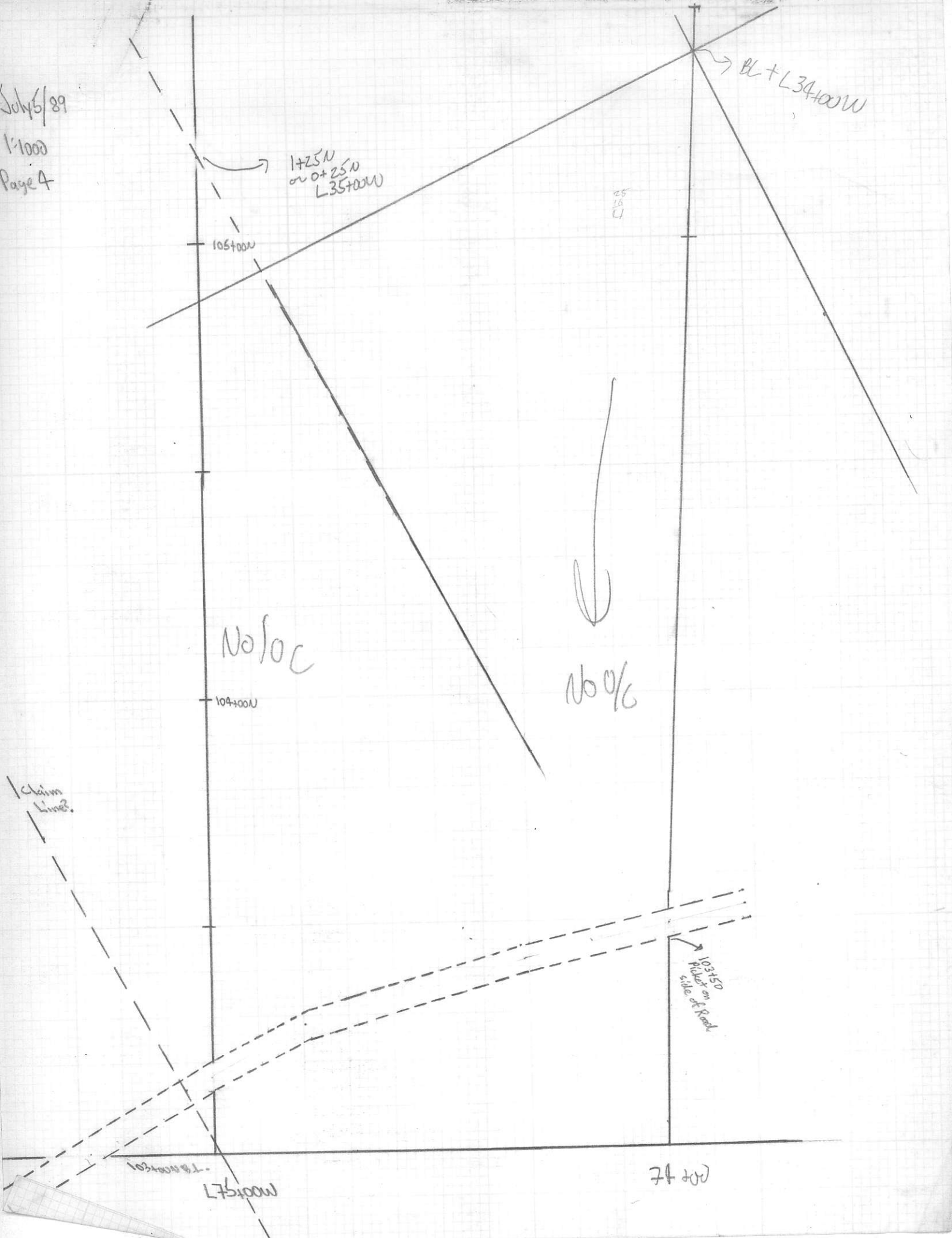


- ① Rhyolite QFP, Felsic Tuff, bleached wh, mgr, thk bdd, massive; mod-str foliated, (foliations generally contorted), 5-10% quartz up to 3mm, 5% white to ghosty feldspar x15 to 42mm.  
(groundmass is wh to aqph + v siliceous, abundant kink bands) 1-2% fine grained disc, wh lam pit to fol pyrite rare pyr cubes in QF;
- ② And LAT, mb dark green, coarse grained; 5% light green epidote altered lithic fragments to 3cm, 5% 3cm to 10cm;
- ③ Rhyolite QFP Felsic Tuff, bleached white, mgr; weak to moderately foliated, 45% QF to 2mm, 45% Feldspar x15 to 40mm, paddy or banded in nature.
- ④ Andesite XLT to LAT; mgr, thk bdd, mod foliated; 5-10% wh to ghosty feldspars; 45% light green epidote altered lithic fragments ? to 3mm, rare fol fabric fragments to 2cm, 3% disc, lam, fine grained pyrite; also 1% banded pyrite fragments 5cm x 2cm
- ⑤ Rhyolite QFP Felsic Tuff, bleached wh, mgr, thk bdd, mod foliated, 45% QF to 2mm, 45% wh to ghosty feldspar x15 to 42mm, has a 1-2% mgreen speckled appearance ? + 1mm, possible fragments ?, 1% disc pyr, laty 2-3%

Sch/81  
1-100  
Page 4



July 6/89  
1:1000  
Page 4



Sub 5/89  
1:1000  
Page 5

108+00  
BL is at  
108+08.50N

Spot  
Checks on  
bearing are  
good at 0290

Line Runs  
0300  
top 50m

108+00 BL  
15  
2.00m N  
of 108

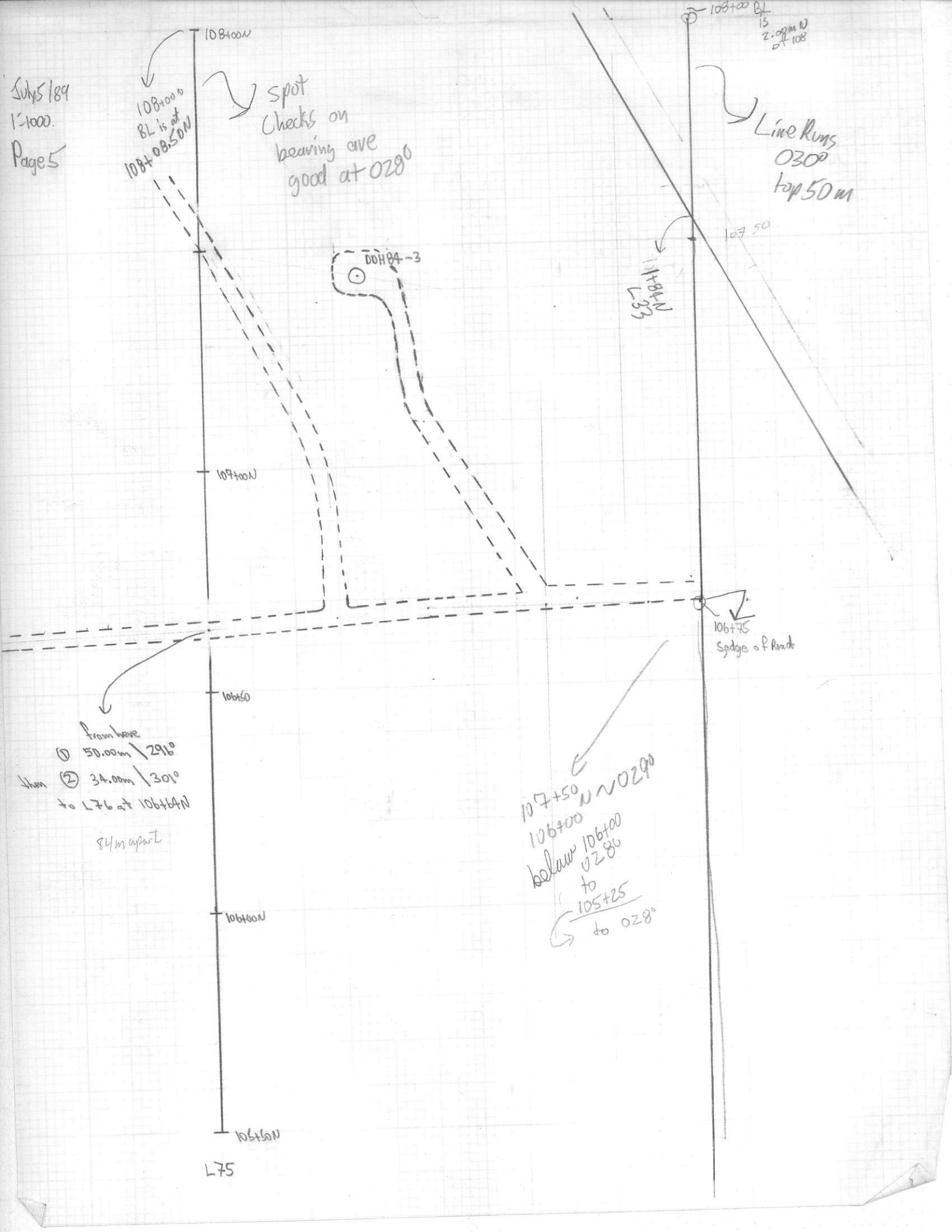
107+33  
L33

DOH 84-3

106+75  
Sedge of Road

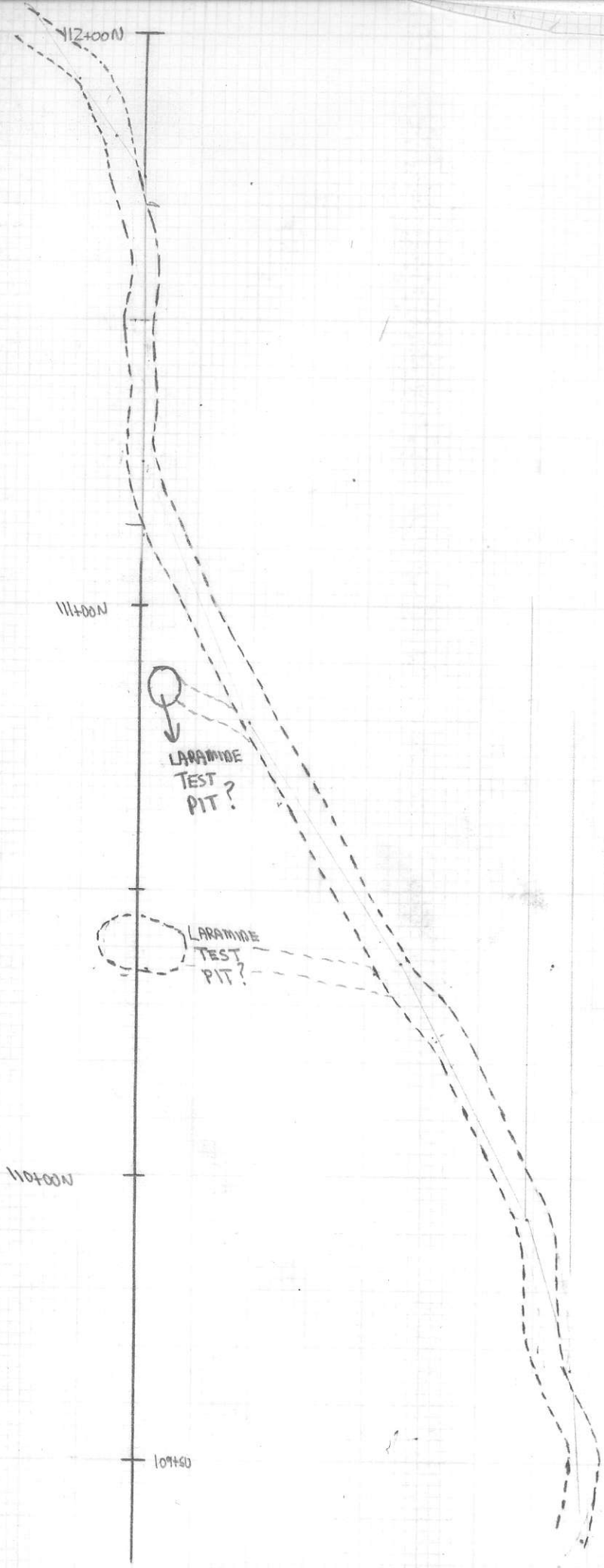
From here  
① 50.00m / 291°  
then ② 34.00m / 301°  
to L76 at 106+64N  
84m apart

107+50  
106+00  
below 106+00  
to 0280  
to 105+25  
to 0280



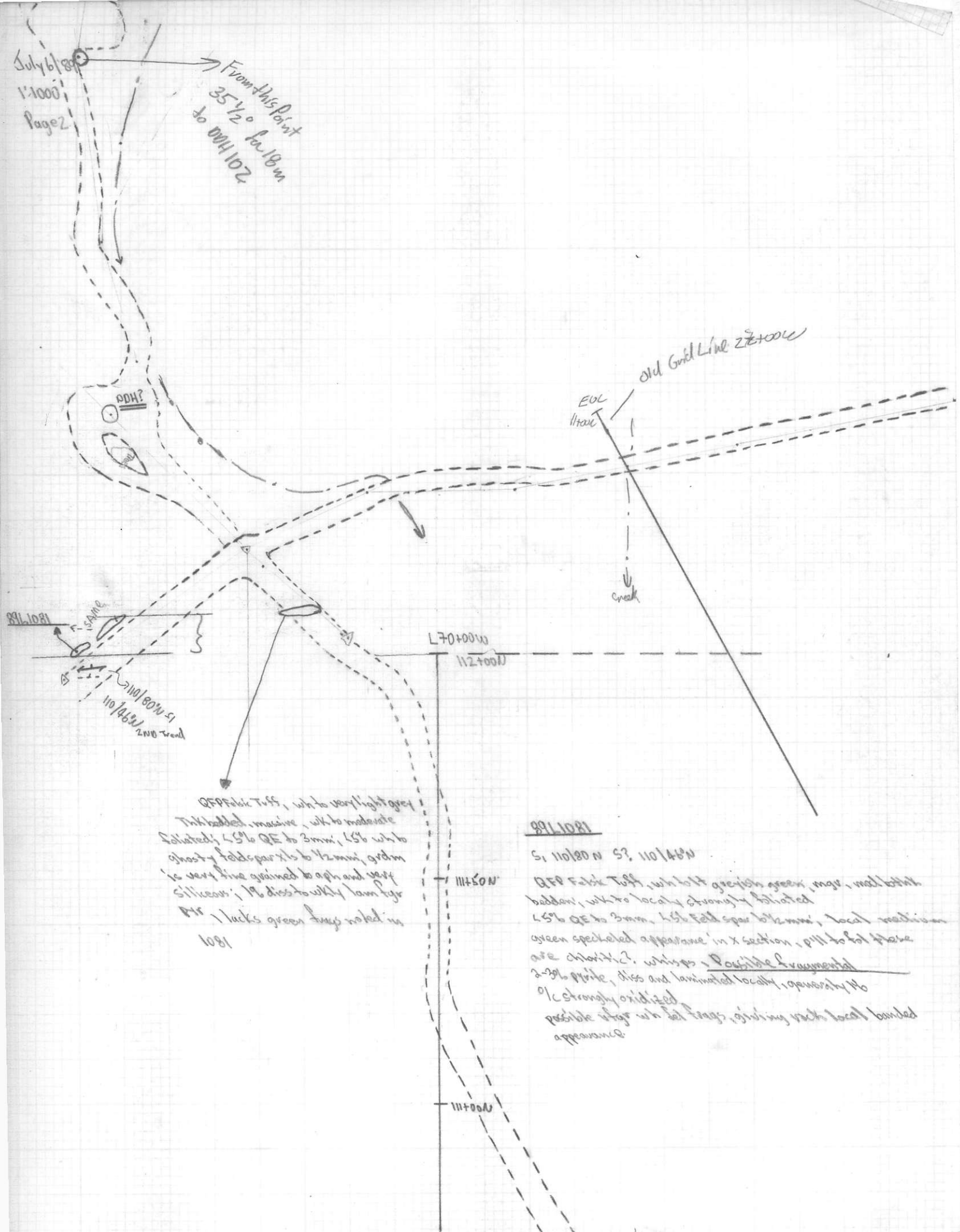
L75

July 6/89  
1:1000  
L 70,69,68  
Page 1



July 6/89  
 1:1000  
 Page 2

From this point  
 35 1/2° for 18m  
 to DDH 102



89L1081  
 110/180N-51  
 110/465N  
 2ND trend

QF-Falic Tuff, white very light grey  
 tabbed, massive, w/ to moderate  
 foliated; 45% QF to 3mm, 45% wh to  
 ghost of falc spar to 1/2 mm, qz/m  
 is very fine grained to aphan and very  
 siliceous; 1% disc to w/ky lam for  
 1% lacks green imp noted in  
 1081

89L1081  
 S1 110/180N S2 110/465N  
 QF-Falic Tuff, wh to lt greyish green, mqr, med to thk  
 bedded, w/ to locally strongly foliated  
 45% QF to 3mm, 45% falc spar to 1/2 mm, local medium  
 green speckled appearance in x section, all to fol these  
 are chloritic? whites, Possible fragmental  
 2-3% white, disc and laminated locally, possibly 1%  
 0% strongly oxidized  
 possible w/ky lam for, giving rock local banded  
 appearance.

July 6/89

1:1000

L70

Page 3

TR83-24  
3 1/2 m

1140

109+25

109+00

L29+00W  
1725N

at 112+00W  
L69 to 70  
123.00 m

108+50

108

108 BL

108+00N

TR83-23

QF Fabric T<sub>11</sub>, mgsen,  
mgsained, 5-10% QF to 2mm,  
minor Feldspar to 1/2mm,

107+50

70+00W  
Should be  
here

89108A

And 17 to LAF, medium to dark green, f-cry,  
mod to strongly foliated, local epid altered  
lithic fragments to 20cm,  
local minor pyrite, the QF in  
places resembles a *Syrs* diorite.

Lower End

TR83-23

107+00N

107+00

106+75



July 6/89  
 1:1000  
 L70  
 Page 4

July 7/89

L70  
 107+00N

L30+00W  
 755

GGR686 114  
 89L1082

QFP felsic Tuff, light greenish wh, wh green east, mag; thick bedded, massive in character, w/ly foliated; 5-10% QF to 3mm; 5% wh to ghostly feldspar xls to 1mm; locality Qc has a faint banded appearance; gndm is sug to Aphanitic + very siliceous "Similar to F.W. Formations of Q2"; local trace disseminated pyrite.

At 106+04m L69, X  
 Abernethy Line 29+00W  
 then 6.00m N on it  
 to 1+005

89L1083

QFP felsic Tuff, light greenish grey mag; mod bedded, mod to str foliated; 5% QF to 3mm; 5% wh to ghostly feldspar xls to 1mm. very similar to 1082 but more straightly foliated.

\*L70, spot checks  
 is almost at oron (close to  
 28°

No/pk  
 ↓

No/oc  
 ↑

Abernethy  
 L31+00W

L Run at 27°  
 above Road

Stops?

105+50

106+00

104+50

105+00 N

106+50

106

105+50

106+00

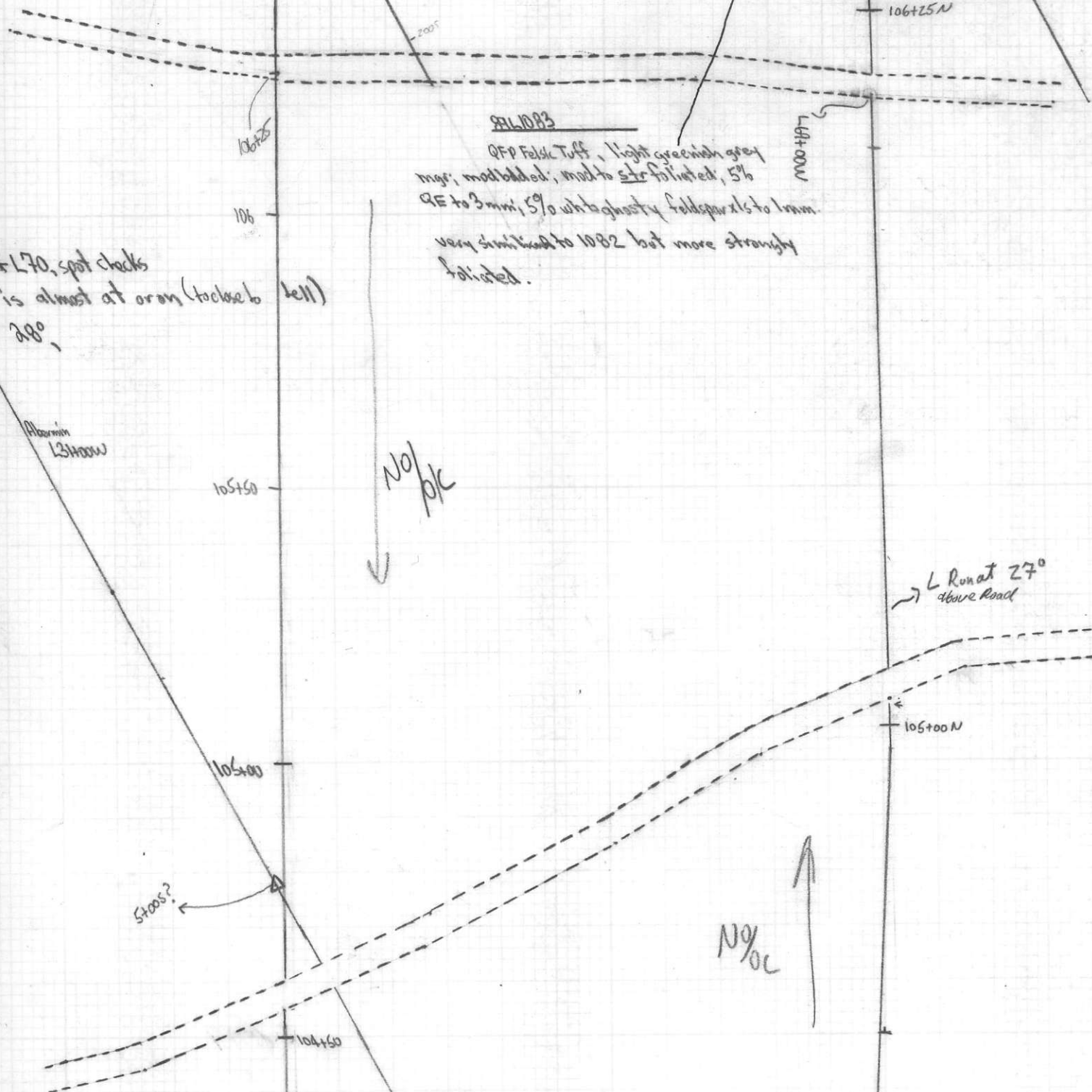
104+50

106+75

106+25 N

100+100 N

L 29+00W



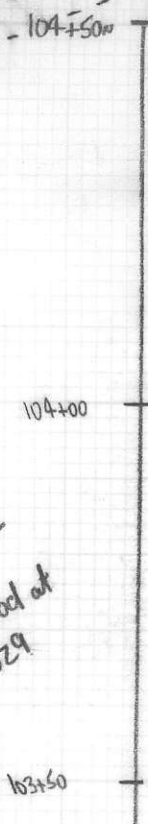
July 7/89

Page 1

1:1000

170/169

↓  
No/oc  
Line good at  
029



↘  
Line  
runs  
029 to 031  
inconsistent

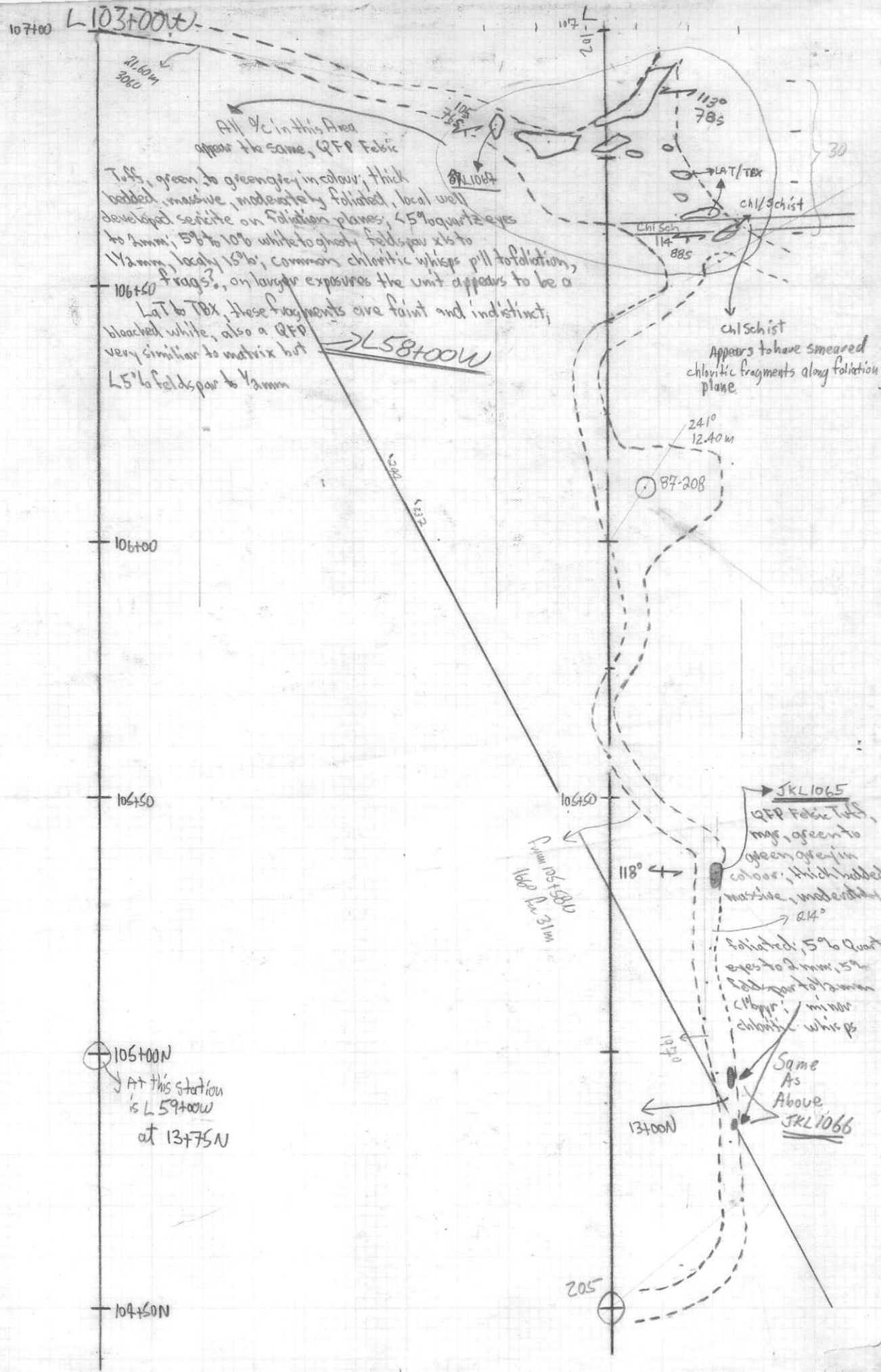
↑  
Tight chained along 103+00 BL  
to 69, 100+00m, good at 118°



June 19, 1989  
 SDK June 19/20  
 Page 1, 1:1000  
 Start 1065

293  
 184  
 113

306 316  
 182 181  
 125 130



All Qc in this Area appear to be same, QFP Fabric

Tuff, green to green-grey in colour, thick bedded, massive, moderately foliated, local well developed sericite on foliation planes, 45% quartz eyes to 2mm, 5% to 10% white to grey, feldspar x6 to 1/2mm, locally 15%, common chloritic whips p/l foliation, frags?, on larger exposures the unit appears to be a Lat to TBX, these fragments are faint and indistinct, bleached white, also a QFP very similar to matrix but L5% to feldspar to 1/2mm

Chl Schist  
 Appears to have smeared chloritic fragments along foliation plane.

JKL1065  
 QFP Fabric Tuff, mg, green to green grey in colour, thick bedded massive, moderately foliated, 5% Quartz eyes to 2mm, 5% feldspar to 1/2mm, minor chloritic whips

Same As Above  
 JKL1066

105+00N  
 At this station is L59+00W at 13+75N

June 12/89

Page 2

115  
130  
140

Andesite XLT / Diorite

fine to medium green, medium grained, massive bedded, very weakly foliated, massive, 10 to 15% white feldspar up to 1/2 mm; weak foliated look; 5% dark green to 1/2 mm; 1/2% contains rare up to 20cm oval in shape

115  
130  
140

Same as Above.

89L1069

DDH 07-215

115

minor chloritic smears all to foliation planes, frags? possible 5% feldspar up to 1/2 mm, white predominantly ghostly to weak epidotted

Fine Grained Foliated Ash

light greenish grey in color thickly bedded, strongly foliated, 5 to 10% pyrite finely disseminated to laminated, 1/2% strongly oxidized, local trace cp. foliation predominantly South, 115° / 72° rare North dips 62° N

Trench 83-31

L103+00W

L102+00W

108+00N

108+00N

160° 91m

89L1068

115° 72° S

Rhyolite QFP, medium green grey, moderately foliated, well developed Surtite on fol surfaces, 1/2% pyrite; 5% quartz eyes to 2mm, 5% feldspar to 1/2 mm; green chloritic smears on foliation surfaces frags?

107+50

107+50N

82° 2.70m DDH 210

Chlorite Schist

medium to dark green, very fine grained strongly foliated, dark green chloritic smears all to fol may be fragments may contain 5% feldspar or other fragments to 1/2 mm "Not a diorite"

Pitted structural trend

57° / 80° SE dip

107

075

111 / 80S

80S SAME AS 1/2% found just below but appears to be a 1AT-10X

also a 54° trend on 110° bearing

107+00N

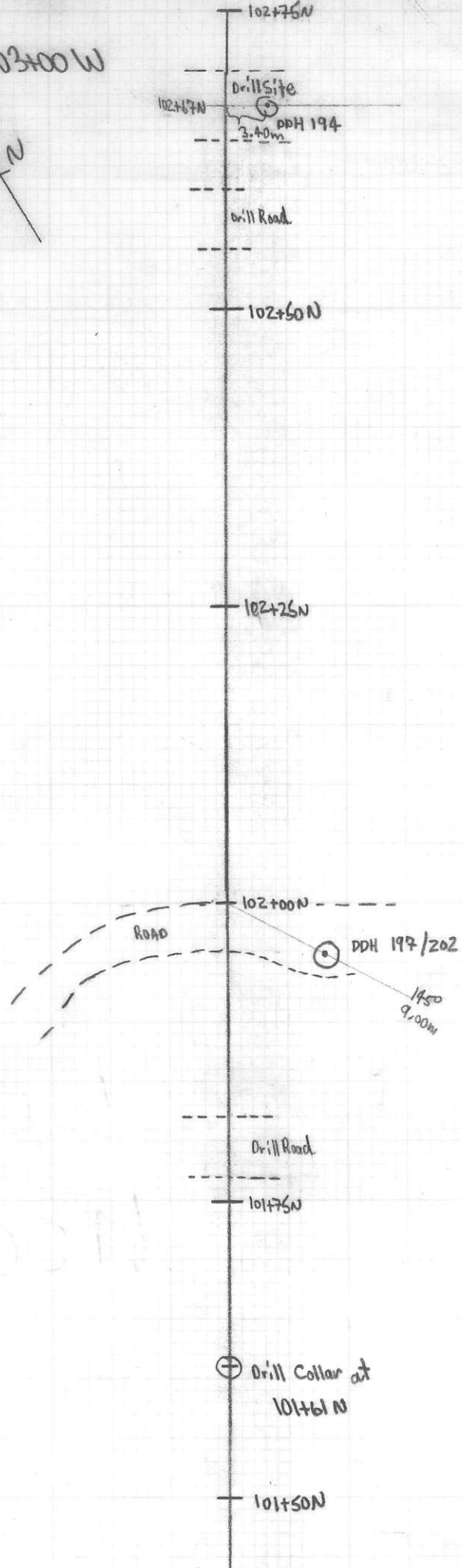
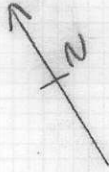
299° 50m

107+00

June 15, 1989 SWK Line 103+00 W

Page 1

1:500



June 16 / Page 2

319° 40m  
DWH 70

103+32W  
103+00N

104+00N

Drill Access Road

103+75

103+50

DWH 188

20'  
Drill Rod

183° for 6.80m

103+25

103+00

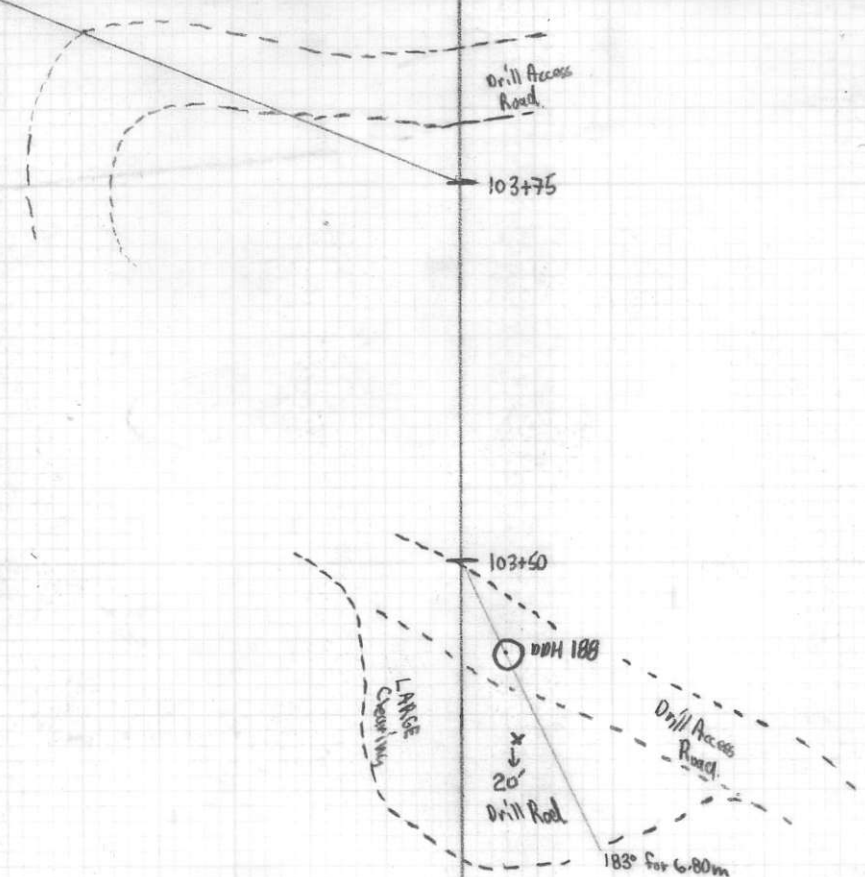
Drill Site 186

194.72° for 11.00m

102+20N

Drill Access Road

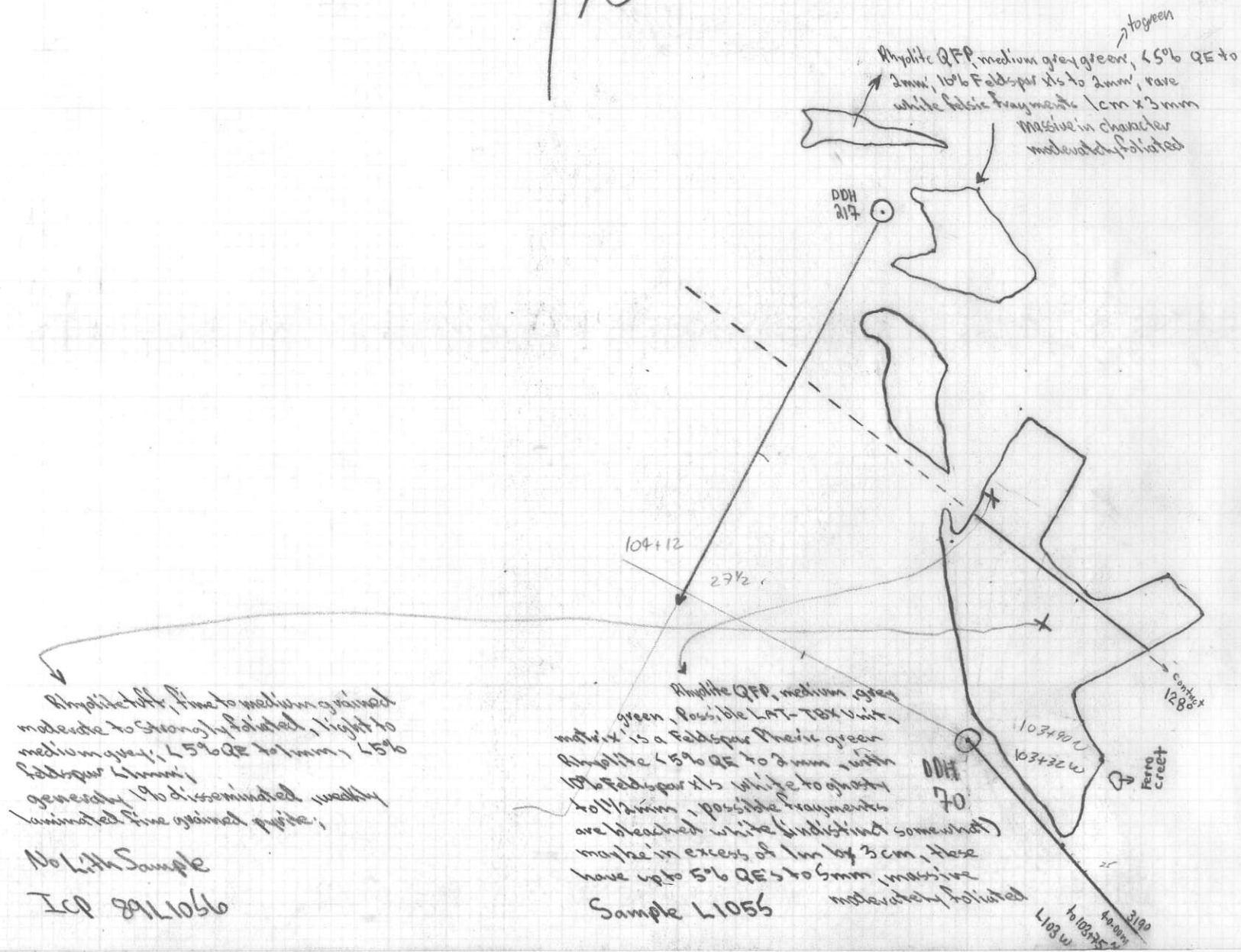
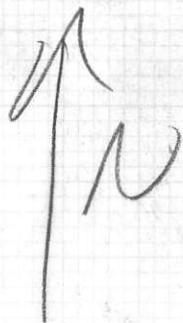
1.7  
180  
319



↑N 1cm=5m

128

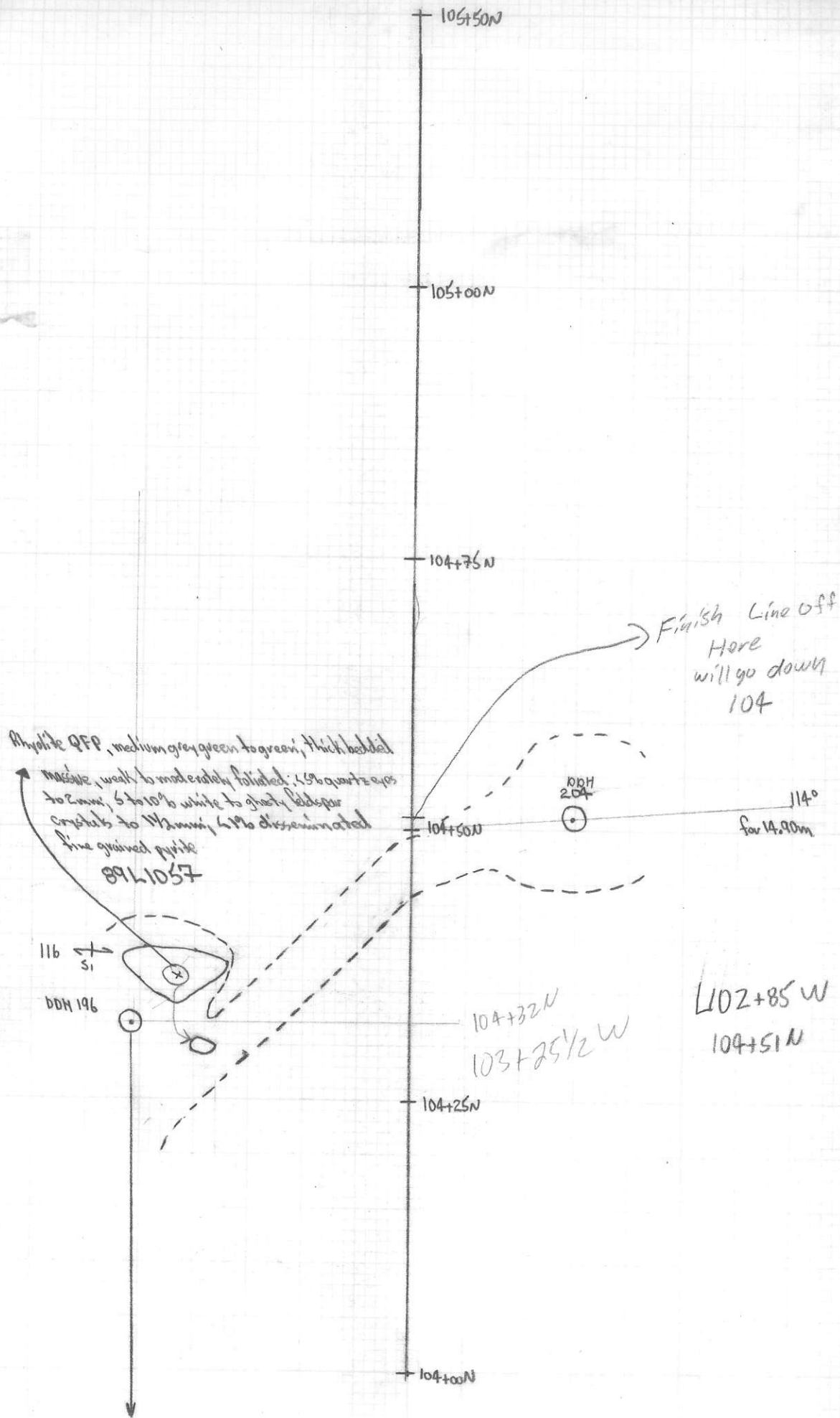
5/20/1981  
Rough 3





June 16/89

Page 4



June 6/89

Page 5

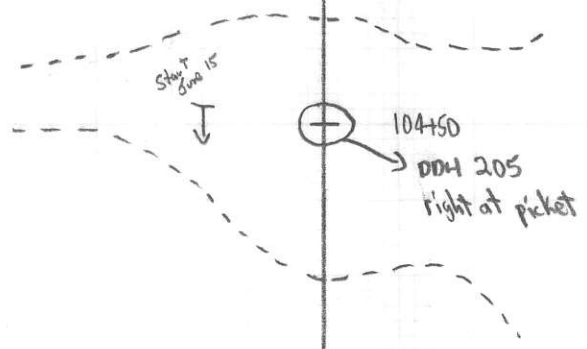
Starting down Line  
102+00w

105+50 L 102

105+25

105+00

104+75



104+25

June 16/89  
Page 6

104+25 L102

104+00

Amphibole tuff, fine to medium grained, white to very light grey; moderate to strongly foliated; well developed sericite; rare quartz eyes < 1mm; rare feldspar < 1/2 to 1/2 mm; locally 1% disseminated weakly laminated fine grained pyrite.

103+75N

89L1058  
No Hand Sample

103+50

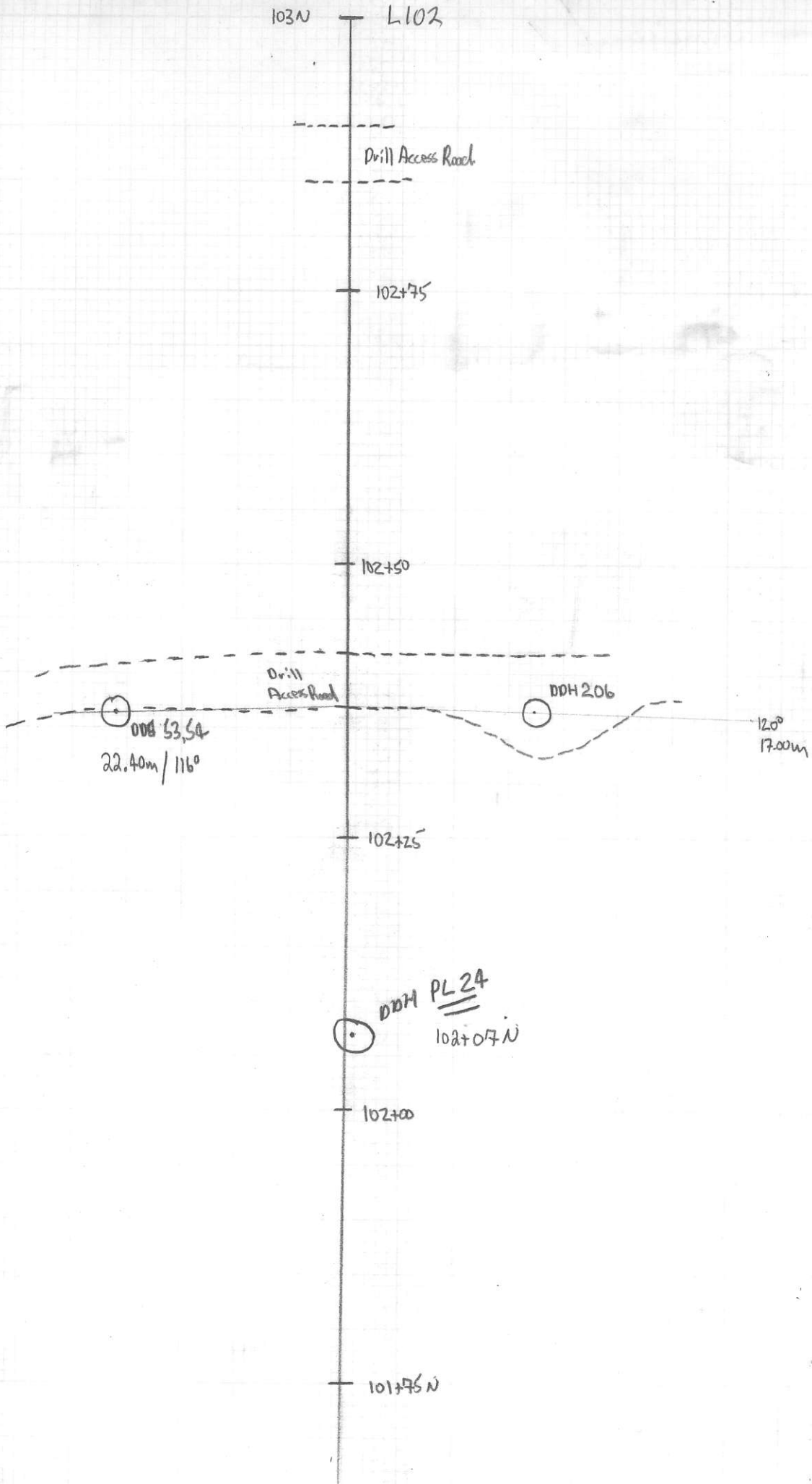
004 193  
200 804.570m

103+25

103+00N

June 15/89

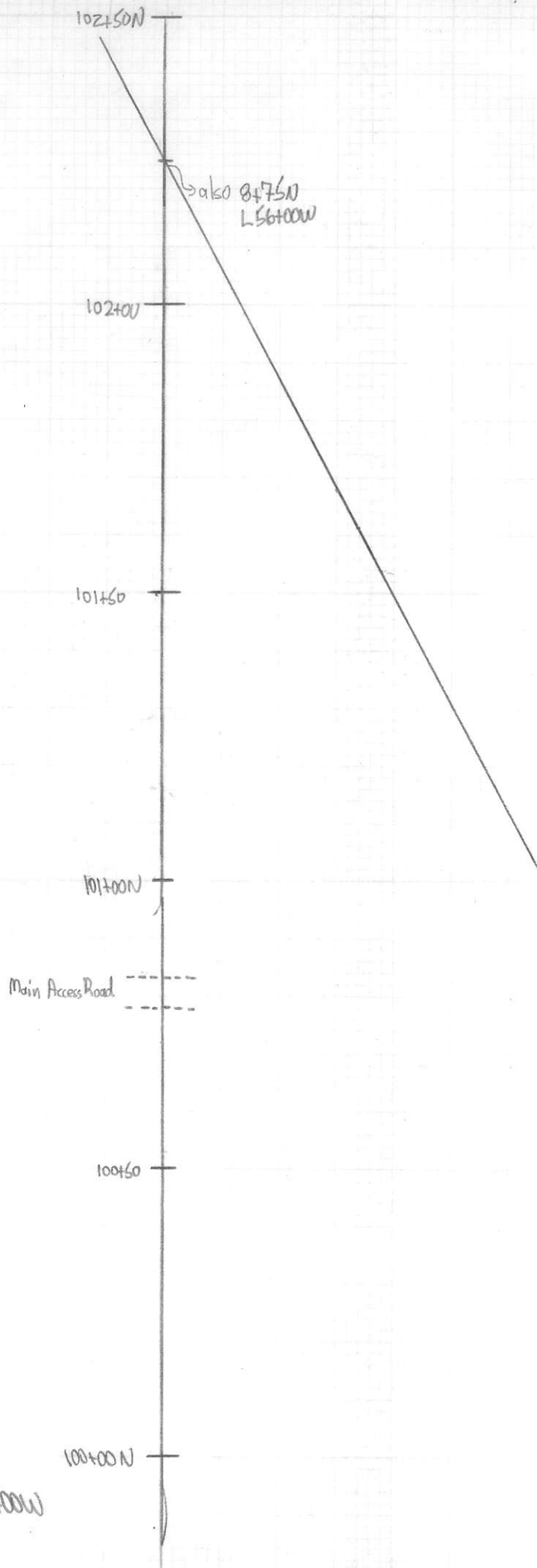
Page 7



June 21 / 89

K1000

Page 1



L98+00W



Survey 2/1969

L98+00W

1:1000

Page 3

98 +00W

Property Boundary

→ F.L.

107  
74N  
107  
76S

11100N

L54+00N  
12+50N

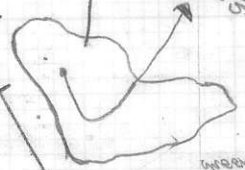
89L1070

QFP, medium green to green grey, massive; moderate to strongly foliated, well developed sericite on foliation planes; 5% QE to 3mm, 5 to 10% white feldspar xls, to 1/2 mm.

L65+00W

old 2/C  
abundant  
Sub crop within this Area

89L1073  
Rhyolite ash to fine  
Grained FP



2870  
89L1072

FP, medium green to greenish grey, fine to medium grained, moderately bedded, moderate to strongly foliated; 5 to 10% white to clay colored feldspar xls to 1/2 mm; rr QE to 2mm

106+00  
End of Line

89L1071

Rhyolite Ash, white to very light grey, fine grained; moderate to thick bedded, strongly foliated, well developed sericite on foliation planes, 1% very fine grained pyrite, may contain 5 to 10% small fragments or feldspar crystals to 1/2 mm

1225

137  
138  
139

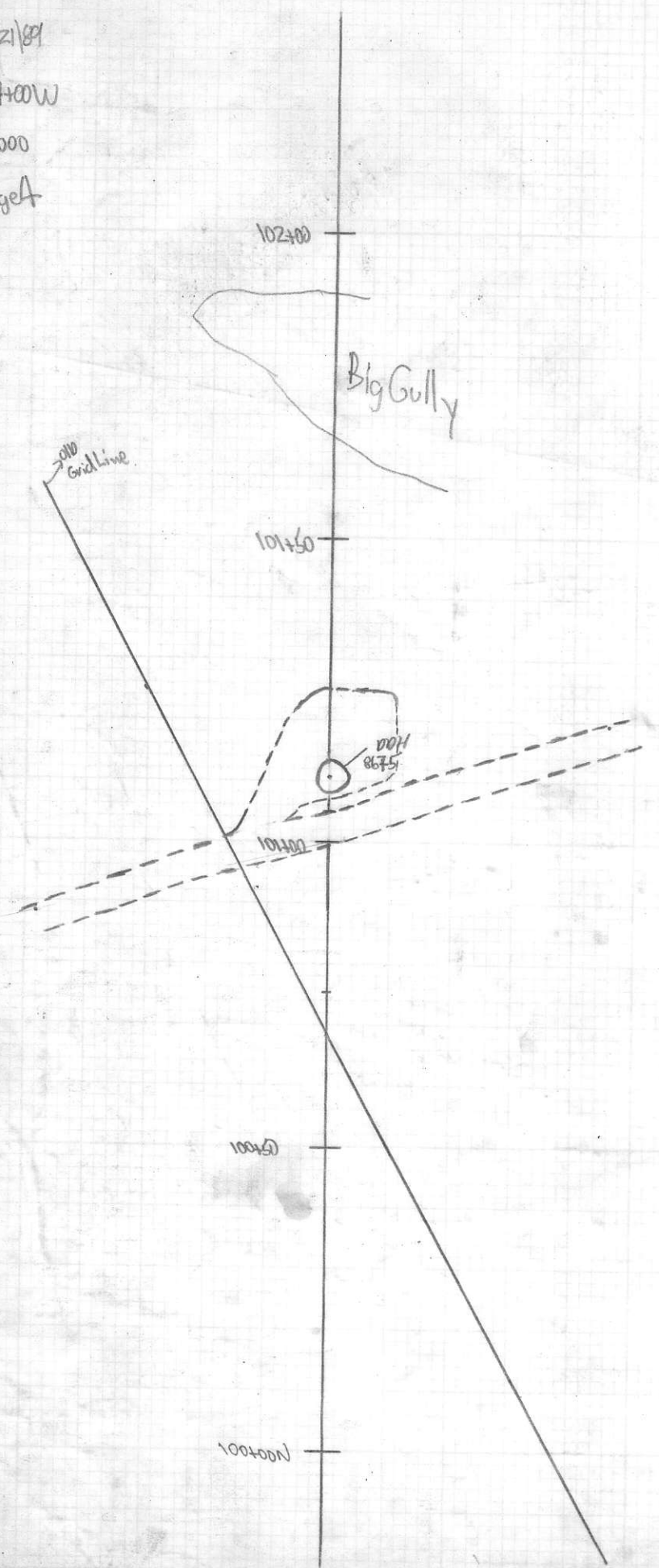
106+50  
End of Pickets

11475

106+00N

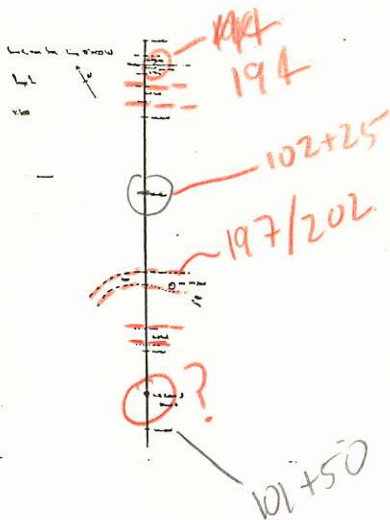
June 21/89  
L97+00W  
1:1000  
Page 4

97 to 103+00  
89 } 106  
90 } 106+50

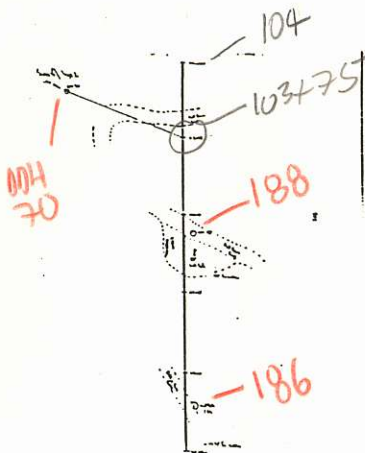




L103



L103



217

10 1000m

5 5/2

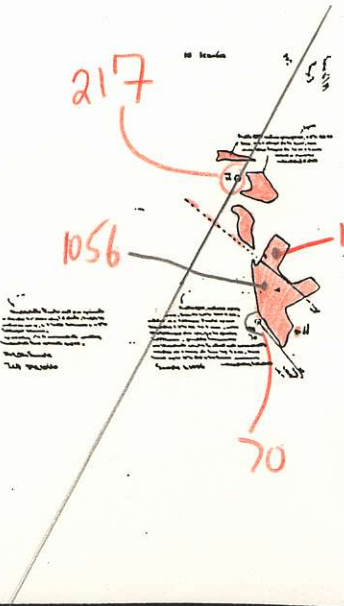
1056

1055

70

Handwritten notes in a column on the left side of the page, partially obscured by a diagonal line.

Handwritten notes in a column on the right side of the page, partially obscured by a diagonal line.



L102

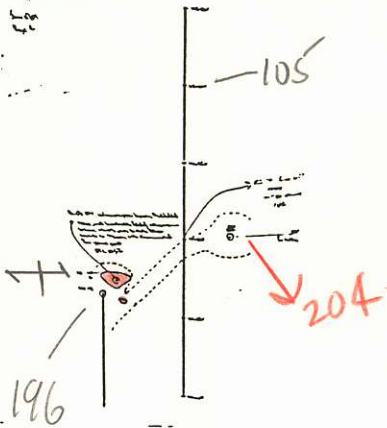
55 ft

— 105+25

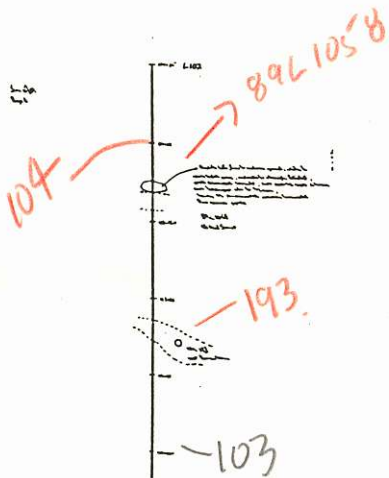
— 205



L 103



L102



THE LIAISON OFFICE AT...

L 102

