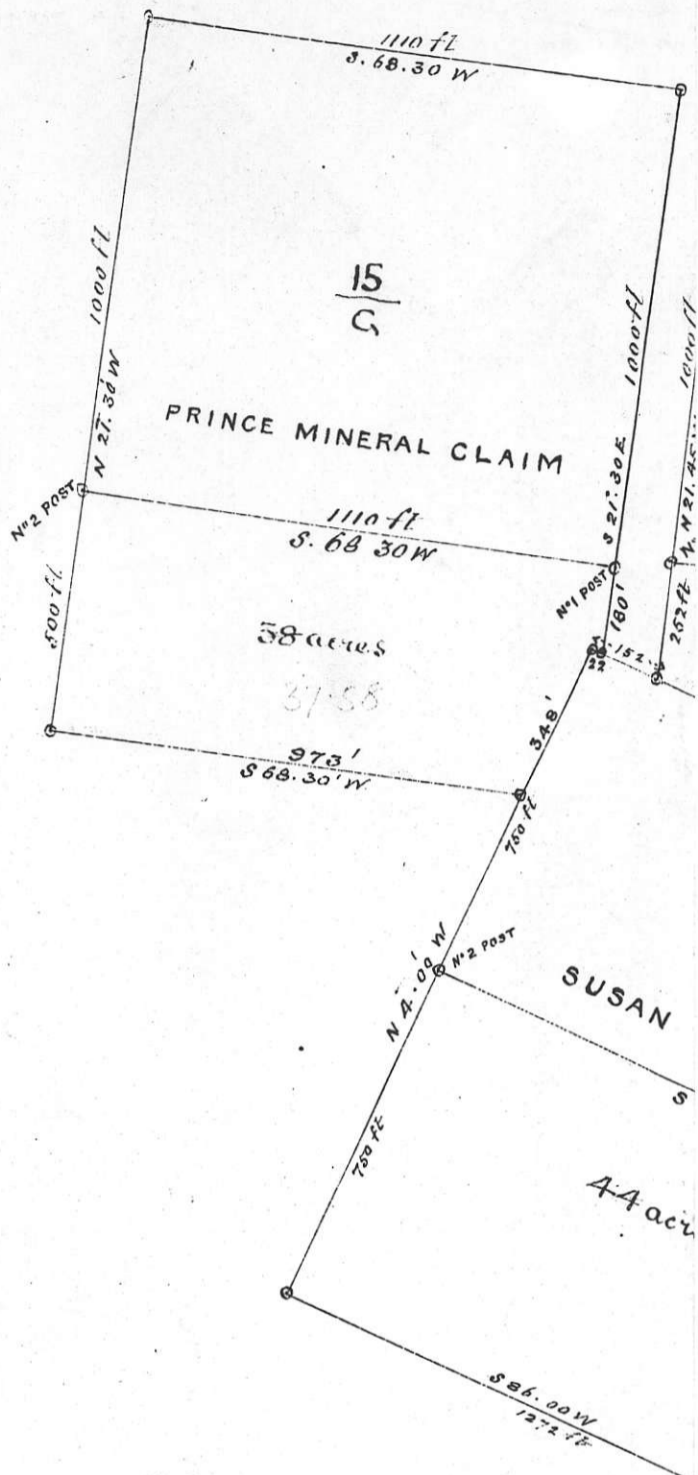


827297



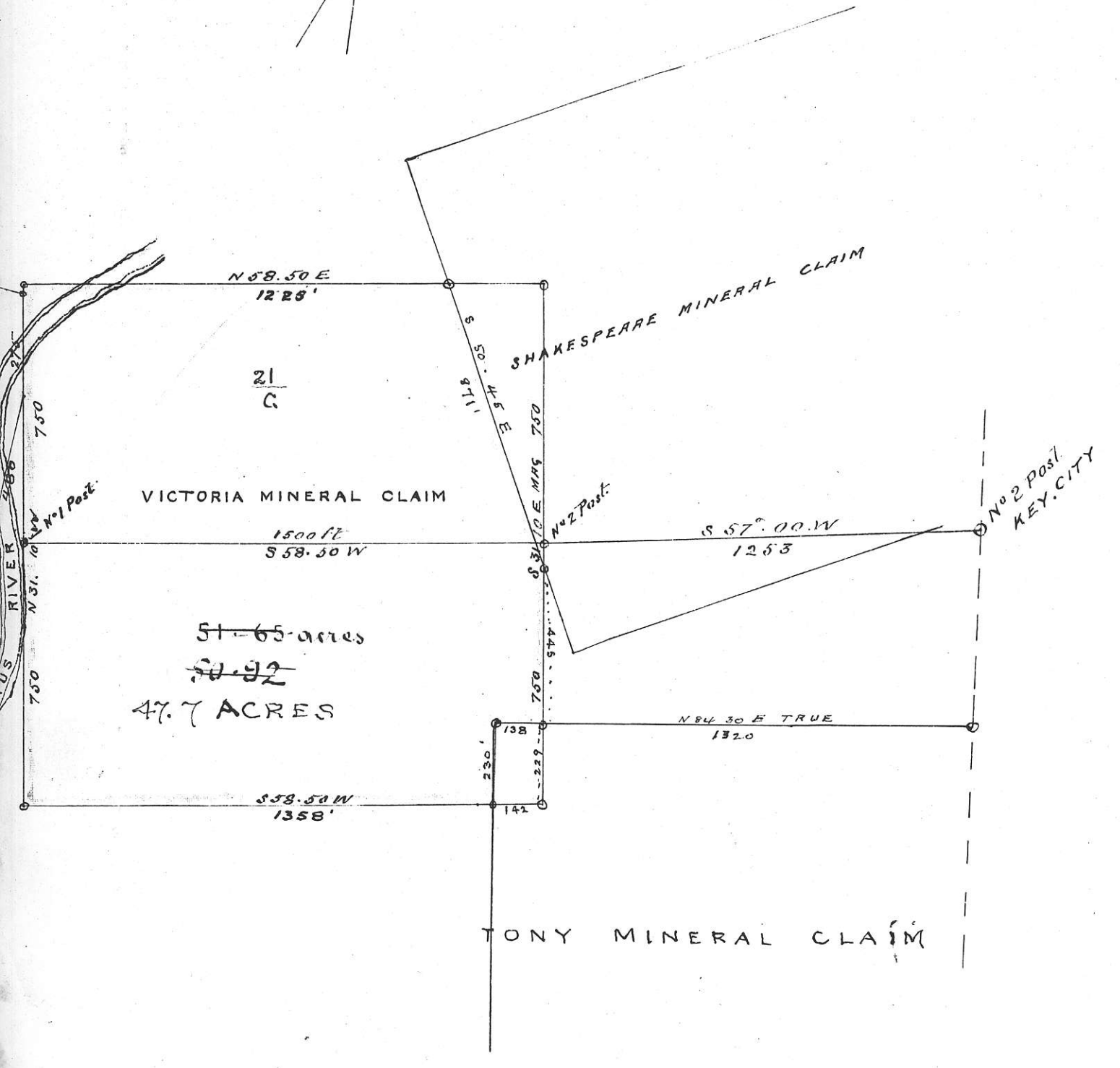
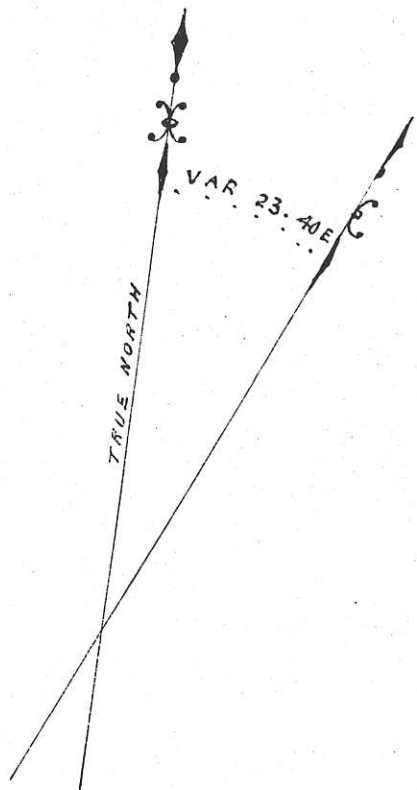
PLAN
of

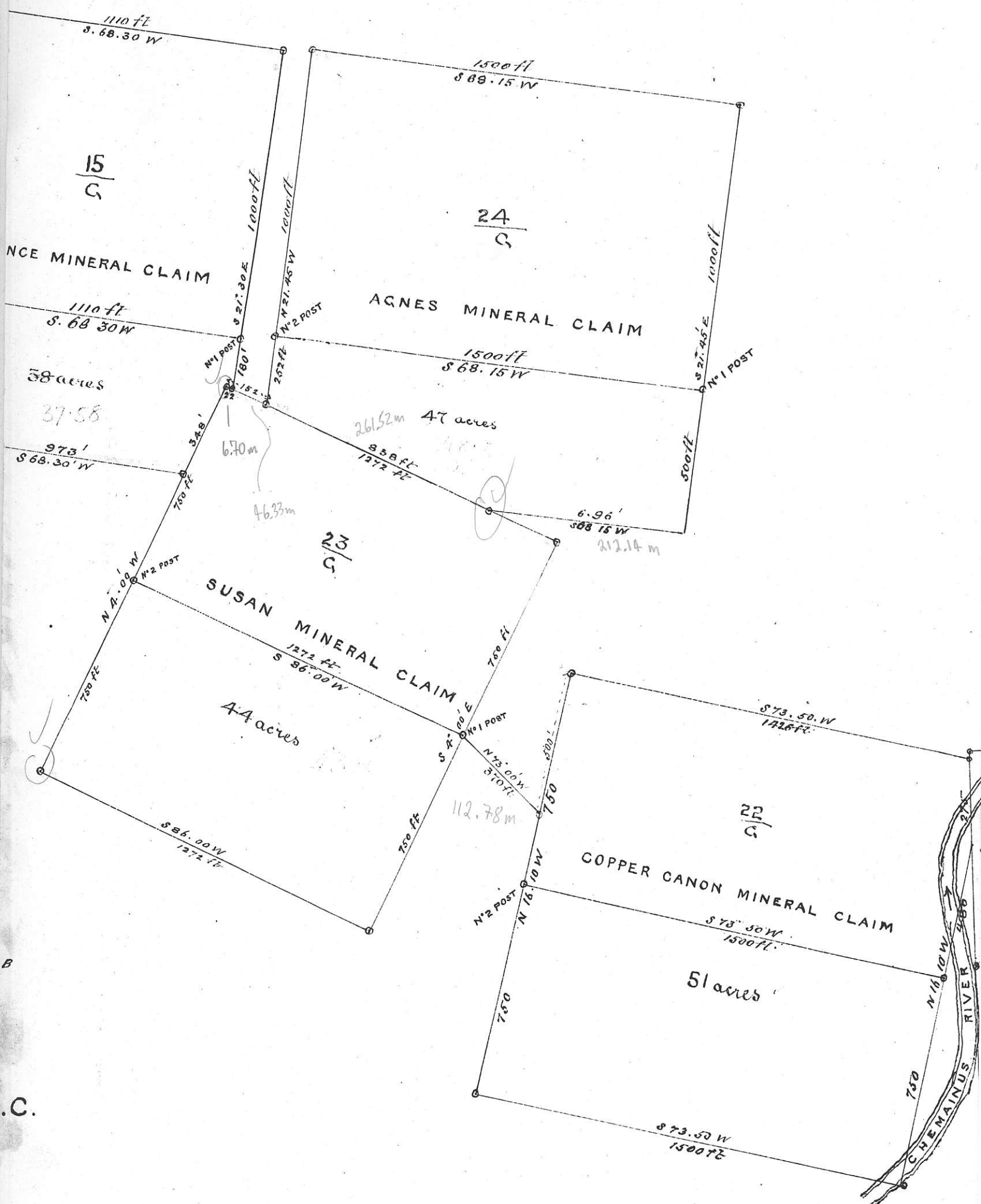
VICTORIA MINERAL CLAIM LOCATED BY JAS. DUNSMUIR,
 COPPER CANON MINERAL CLAIM LOCATED BY J. ERB.
 SUSAN MINERAL CLAIM LOCATED BY SUSANNAH ERB
 AGNES MINERAL CLAIM LOCATED BY E. J. PALMER
 PRINCE MINERAL CLAIM LOCATED BY J. A. HUMBIRD

ON CHEMAINUS RIVER VALLEY B.C.

Scale 400 ft = 1 inch

MINERAL CLAIM





B
C.

Copy of Record Victoria M. C

Victoria Mineral Claim

98884 No of Certificate

located by Jas Drummer

The claim is situated on Churnairus R
about 5 miles from E & W. R. R. bridge

The direction of the location line Easterly

The length of claim is 1500 ft

The claim was located on 29th May 1897

Recorded this 8th day of June 1897

Signed W. S. Gore

Mineral Recorder

750 ft to right & 750 feet to left
of location line

The above line was run the day of 189

Note. This Post is on edge of a stream
running down Mountain see next line
and is on the Long Mineral Claim

Established Post 7 50

lot 21. 9
SE Cor Victoria
mineral claim

intersect N boundary
Ester Post.

5 21

Long Mineral Claim
bearing S 61-15 W mag to N.W
corner Post of Long dis 138 ft

5.00

Land slopes to NE

Etab Post at intersection

7 46

with Shakespeare M. Claim

bearing to South Corner Post S 60-45 E distance 250 ft

Started from N: 2

7

Post Victoria M. Claim

Note: This Post is on the Shakespeare Mineral Claim

Course S 31.15 E May

The above line was run the 30th day of June 1897

Henry J. P. S



The above line was run the day of 189

Established Cedar Post 15 000 Lot $\frac{21}{4}$ S.W. Cor Victoria m. claim

to cross stream 7.00

5.00

Touch bend of 3.00 stream

Pub. intersect W boundary 2.00 1.40

Long Mineral claim

Started from S.E. Cor

Post Victoria m claim

Course S 58.45.0 W mag

The above line was run the 30th day of June 1897 Henry H. P. S.

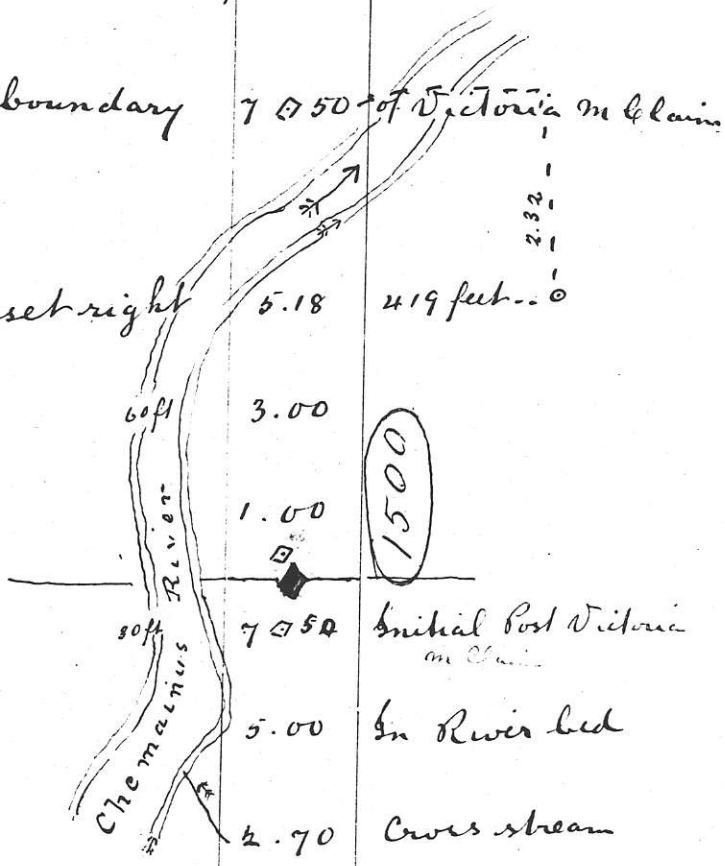
This offset was made on $\frac{1}{2}$ of }
line running in River \rightarrow

The above line was run the day of 189

From here sighted west across River
to intersect line from 518

To N. boundary 7 750 of Victoria m claim

offset right



Started from SW. \diamond Cor. Post Victoria
m claim

Course N. 31.15 W mag

The above line was run the 30th day of June 1897
Henry Jay P.S.S

Note Post is set in a pile of stones at the foot of a rock bluff

The above line was run the day of 189

Lot 21

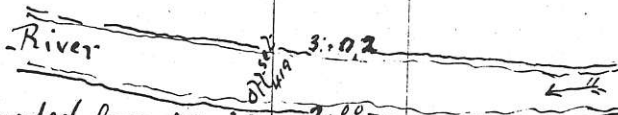
Establish Post 15.00 N.E. Cor. Victoria
This Post is on Shakespeare M. Claim

Establish Post Intersection 2.25 Shakespeare M.C
S 80 40 E Mag
872 ft

Bench Land 10.00 gradual ascent

5.00 Rising fast

From intersection 4 @ 19 N. boundary at 7.50
last page



Started from N.W. Cor of Victoria M Claim

Course N. 58 45 E mag

The above line was run the 30 day of June 1897
Henry Fry P.L.S

Containing 4700

107 $\frac{21}{2}$

To N.E. Cor Post 7950 of Victoria on claim
(see page 10)

5.00 steep descent

3.00 begin descent

1.70 top of rise

Started from \square No. 2 Post Victoria
M. claim

Course N. 31.15' W mag

The above line was run the day of 189

The above line was run the 7th day of July 1897
Henry G. P. S.

Copy of record of Susai Mineral Claims

Susai Mineral Claims

9326.9 No of certificate

located by Susanna L Erb

The claim is situate on the west side of the Chemamin river on an east and west line crossing the big Chemamin river cañon near the south end. This claim joins the copper cañon mineral claim on the west.

The direction of the location line is westerly the length of the claim is 1500 ft.

The claim was located on 31st day of May 189th
Recorded this 3rd day of June 189th

Signed W. J. Gies

Mineral Recorder

750 feet of this claim lays to the right
& 750 ft- to the left of the location line
W J

The above line was run the day of 189

The above line was run the day of 189

Note To connect with Copper Canyon M Claim
see page 25

The above line was run the day of 189

133 Cedar 6 ft }
 133 Fir 6 ft } Pile stones
 " " }
 Establish Post S.E. Cor. 7 ~~7~~ 50 ^{Lot 23} Susan M Claim
 Cedar @
 ← 6.60 Stream 2 ft.
 Side hill continues 5.00 burned timber
 ← 3.50 Cross stream 2 ft
 On side hill 2.00 falls East
 Starting from N.° 1 Post Susan M Claim
 Run East boundary

Course S 4° E

The above line was run the 5 day of July 1897
Henry Fry Pt

B 3 Fri 2 ft. 20 ft N 63 W mag
" " 3 ft 40 " W "

Lot ²³/₆

Establish Post 12572 S.W. Cor Susan m
Claim

Still ascending 7.50 mountain

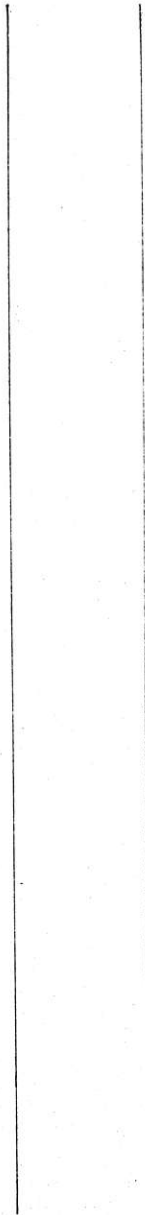
Following up right 5.00 bank _{50.} small stream

Starting from SE \square Cor Susan m Claim
Run South boundary

Course S 86.00 W mag

The above line was run the day of 189

The above line was run the 5 day of July 1897
Henry Fry P.D.



The above line was run the day of 189

Pile Stones N. 6.5
 Establish Post 15 00 N. W. Cor. Susan
 Open burnt side hill M. Claim

9.50 Stream 3 ft

N^o 2 Post 7 50 Susan M. Claim

2.00 Stream 2 ft

Starting from S.W. Cor. □ Susan M. Claim
 Run West boundary

Course N. 42 N. mag

The above line was run the 5th day of July 1897
Henry Fry P. L. S.

B J Fir (dead) 18 lbs S mag
" " 35 " SMC "

Lot 22

N E Cor Post of 12072 Susan M Claim

Very steep descent 10.00 burnt timber

Halls steep to East 4.00 on ridge

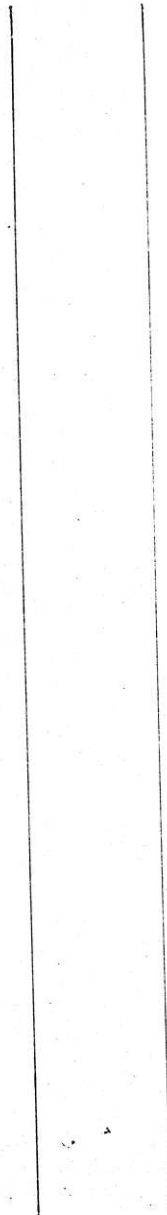
Running down 3.00 Ravine

Starting from N W Cor of Post Susan M Claim
Run North boundary

Course N 86.00 E mag

The above line was run the day of 189

The above line was run the 5 day of July 1897
Henry J. P. S.



The above line was run the day of 189

To No 1 Post 7 750 Susan M McClain
(page 32)

Along foot hill 5.00 of Mountain

Starting from NE \square Cor Susan M McClain
Run East boundary

Course S 4 E mag

The above line was run the 7 day of July 1897
Henry Fry P. L. S

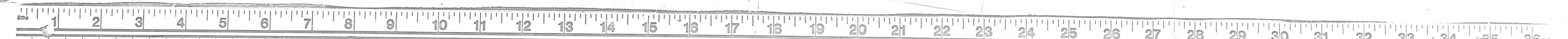
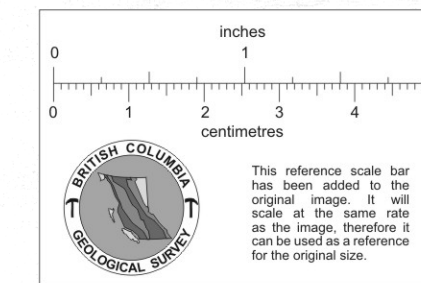
E. COAST VANCOUVER I.

Scale 200 Ft. = 1 inch

CHEMAINUS



257 EAST COAST V. 2T3



105108