

Last Chance  
827120

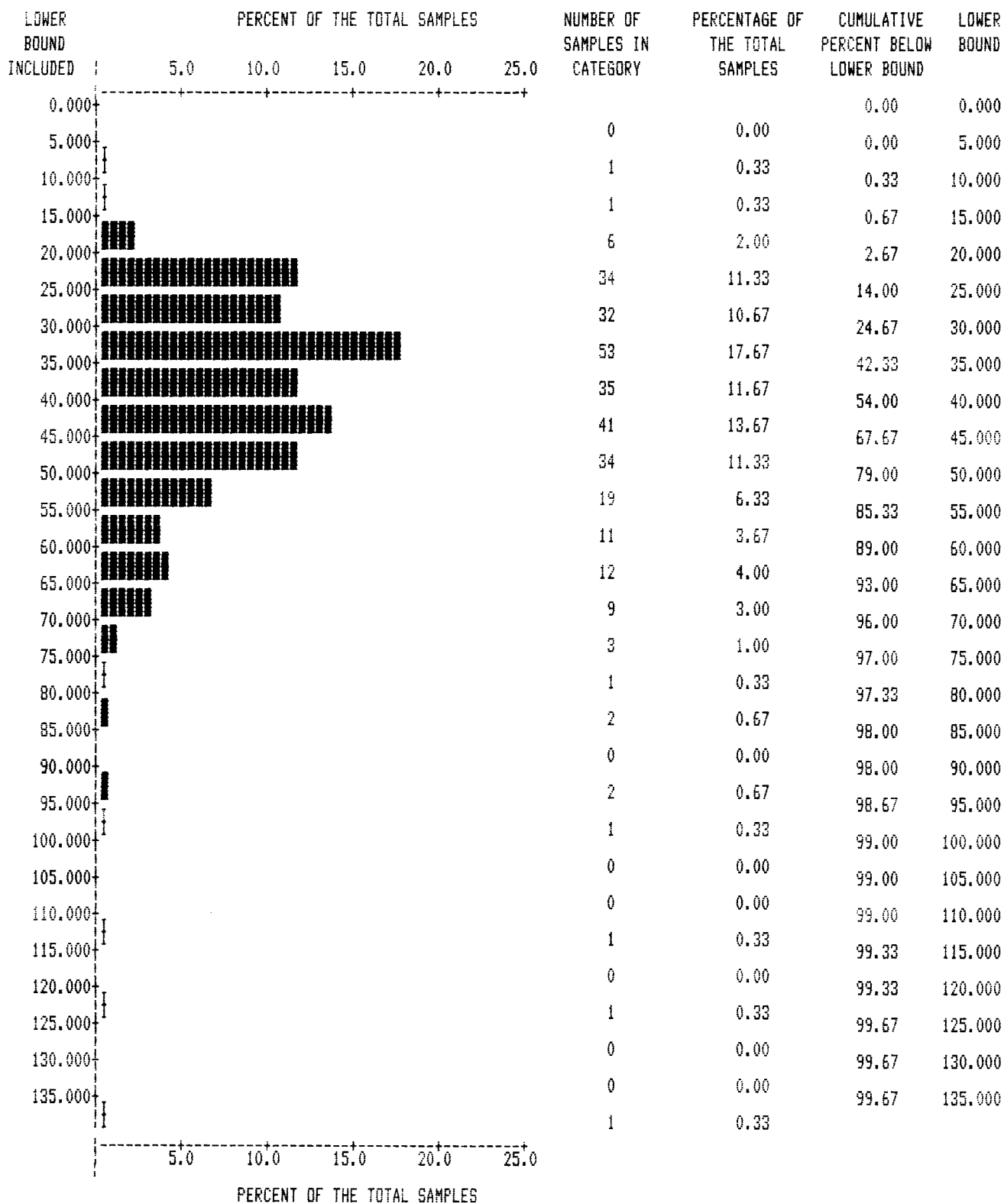
LAST CHANCE SOIL GEOCHEM - 1987

CORRELATION MATRIX: (99.0 INDICATES COEFFICIENT COULD NOT BE CALCULATED)

	AG	AS	B	CU	PB	SB	ZN	AU
AG	1.000	0.352	0.392	0.414	0.211	0.213	-0.003	-0.078
AS	0.352	1.000	0.296	0.111	0.074	0.162	0.088	0.006
B	0.392	0.296	1.000	0.378	0.035	0.311	0.336	-0.026
CU	0.414	0.111	0.378	1.000	0.243	0.162	-0.031	-0.056
PB	0.211	0.074	0.035	0.243	1.000	-0.012	-0.162	-0.092
SB	0.213	0.162	0.311	0.162	-0.012	1.000	0.115	-0.004
ZN	-0.003	0.088	0.336	-0.031	-0.162	0.115	1.000	-0.034
AU	-0.078	0.006	-0.026	-0.056	-0.092	-0.004	-0.034	1.000

DATA TITLE : LAST CHANCE SOIL GEOCHEM - 1987

VARIABLE : CU



VARIABLE: CU  
NUMBER OF OBSERVATIONS: 300  
MINIMUM: 9.000  
MAXIMUM: 138.000  
MEAN: 40.240  
STANDARD ERROR OF MEAN: 0.963  
STANDARD DEVIATION: 16.676  
COEFFICIENT OF VARIATION: 41.440  
SKEWNESS: 1.822  
KURTOSIS: 6.274

\*\*\*\*\*

WE WILL NOW MAKE ANOTHER PASS THROUGH THE DATA.

THE SAME TRANSFORMATIONS AND SELECTIONS AS LAST RUN WILL BE USED IN THIS RUN.

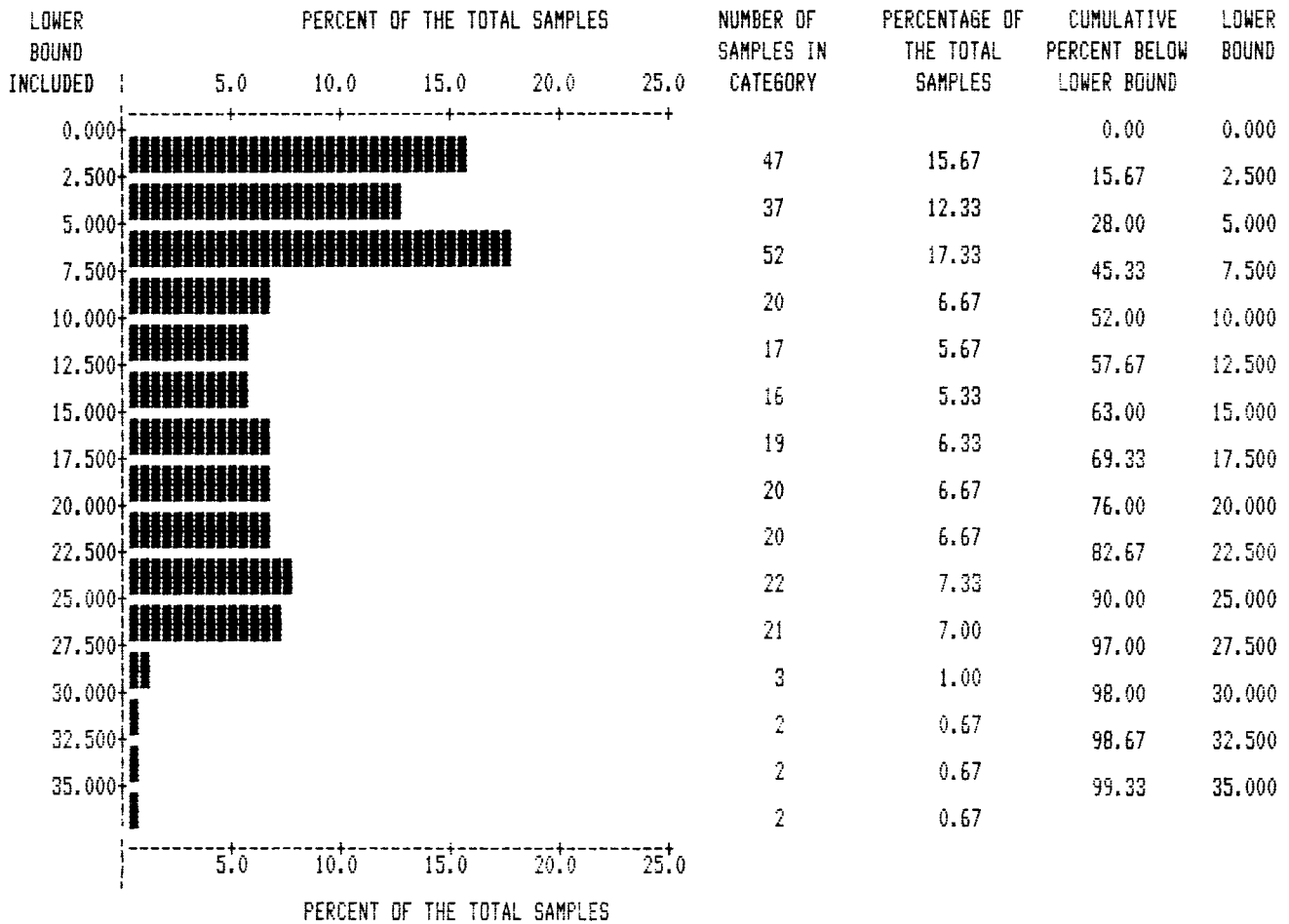
\*\*\*\*\*

WE WILL NOW MAKE ANOTHER PASS THROUGH THE DATA.

THE SAME TRANSFORMATIONS AND SELECTIONS AS LAST RUN WILL BE USED IN THIS RUN.

DATA TITLE : LAST CHANCE SOIL GEOCHEM - 1987

VARIABLE : AS



VARIABLE: AS  
 NUMBER OF OBSERVATIONS: 300  
 MINIMUM: 1.000  
 MAXIMUM: 36.000  
 MEAN: 11.773  
 STANDARD ERROR OF MEAN: 0.514  
 STANDARD DEVIATION: 8.900  
 COEFFICIENT OF VARIATION: 75.593  
 SKEWNESS: 0.519  
 KURTOSIS: -0.968

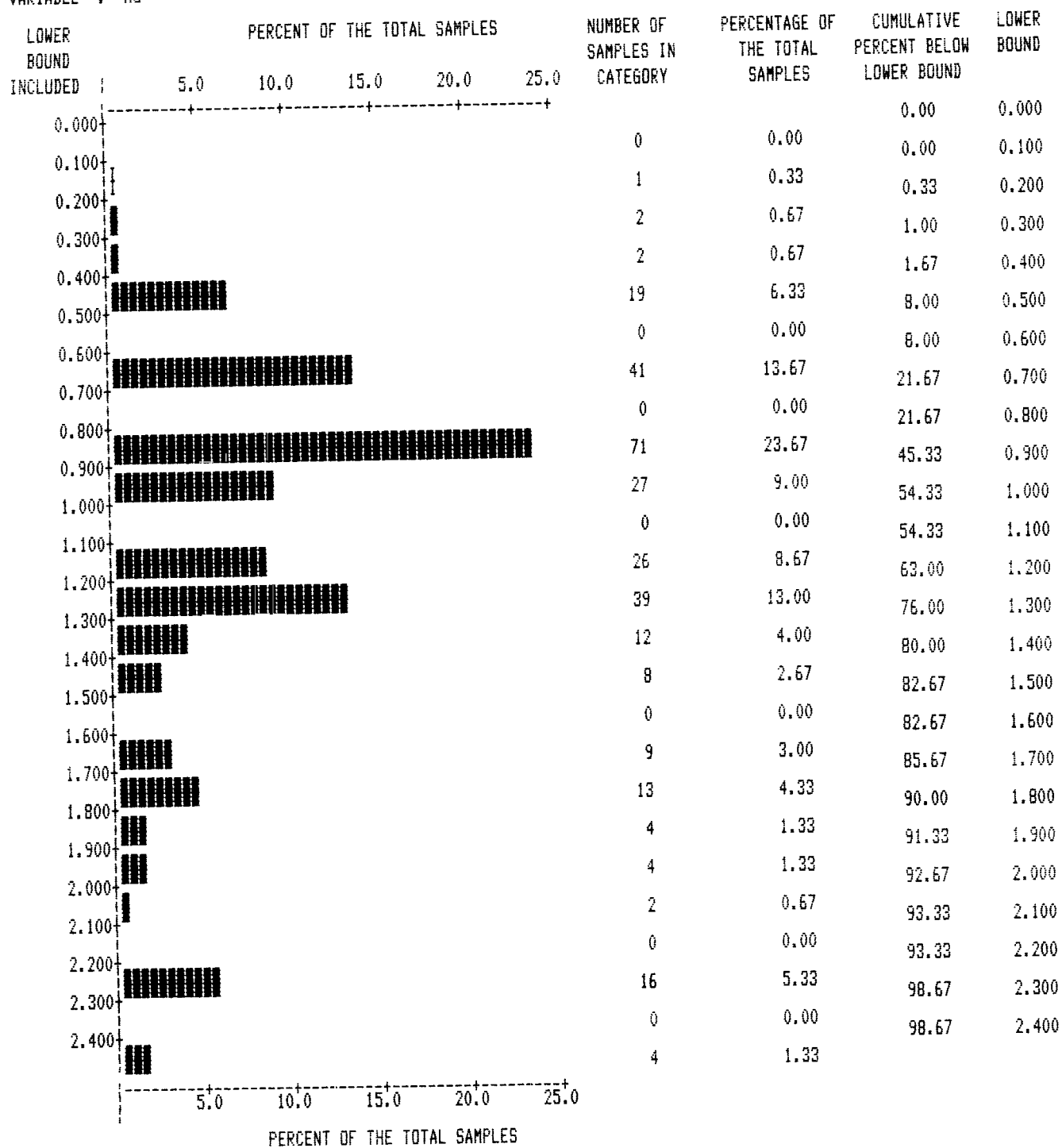
\*\*\*\*\*

WE WILL NOW MAKE ANOTHER PASS THROUGH THE DATA.

THE SAME TRANSFORMATIONS AND SELECTIONS AS LAST RUN WILL BE USED IN THIS RUN.

DATA TITLE : LAST CHANCE SOIL GEOCHEM - 1987

VARIABLE : AG



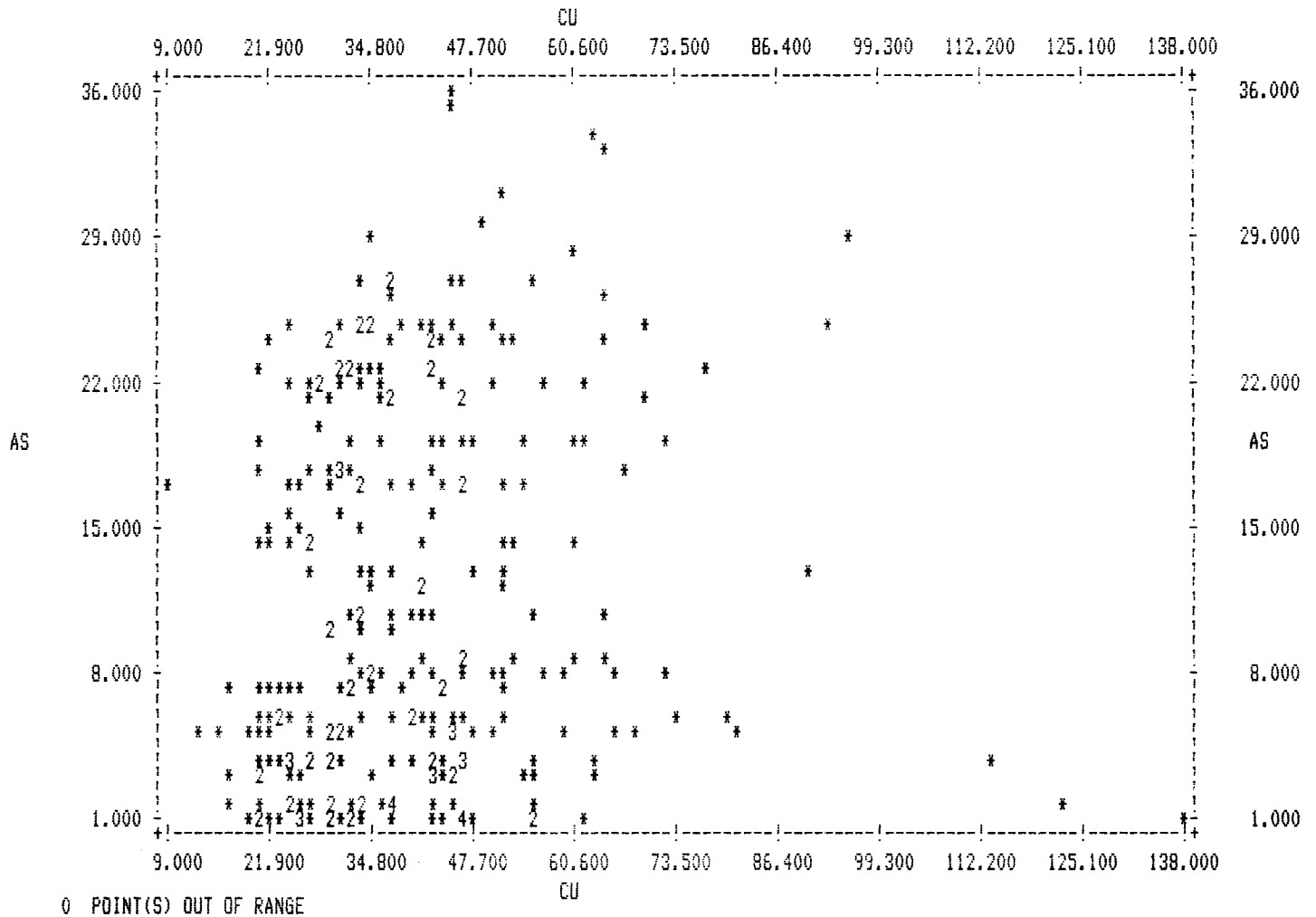
VARIABLE: AG  
 NUMBER OF OBSERVATIONS: 300  
 MINIMUM: 0.100  
 MAXIMUM: 2.500  
 MEAN: 1.107  
 STANDARD ERROR OF MEAN: 0.028  
 STANDARD DEVIATION: 0.491  
 COEFFICIENT OF VARIATION: 44.304  
 SKEWNESS: 0.850  
 KURTOSIS: 0.275

\*\*\*\*\*

WE WILL NOW MAKE ANOTHER PASS THROUGH THE DATA.

THE SAME TRANSFORMATIONS AND SELECTIONS AS LAST RUN WILL BE USED IN THIS RUN.

LAST CHANCE SOIL GEOCHEM - 1987



STATISTICS FOR VARIABLES:	CU	AS
NUMBER OF OBSERVATIONS:	300	300
MINIMUM:	9.00	1.00
MAXIMUM:	138.00	36.00
MEAN:	40.24	11.77
STANDARD ERROR OF MEAN:	0.96	0.51
STANDARD DEVIATION:	16.68	8.90
COEFFICIENT OF VARIATION:	41.44	75.59
SKENNESS:	1.82	0.52
KURTOSIS:	6.27	-0.97
CORRELATION COEFFICIENT:	0.1110	

```

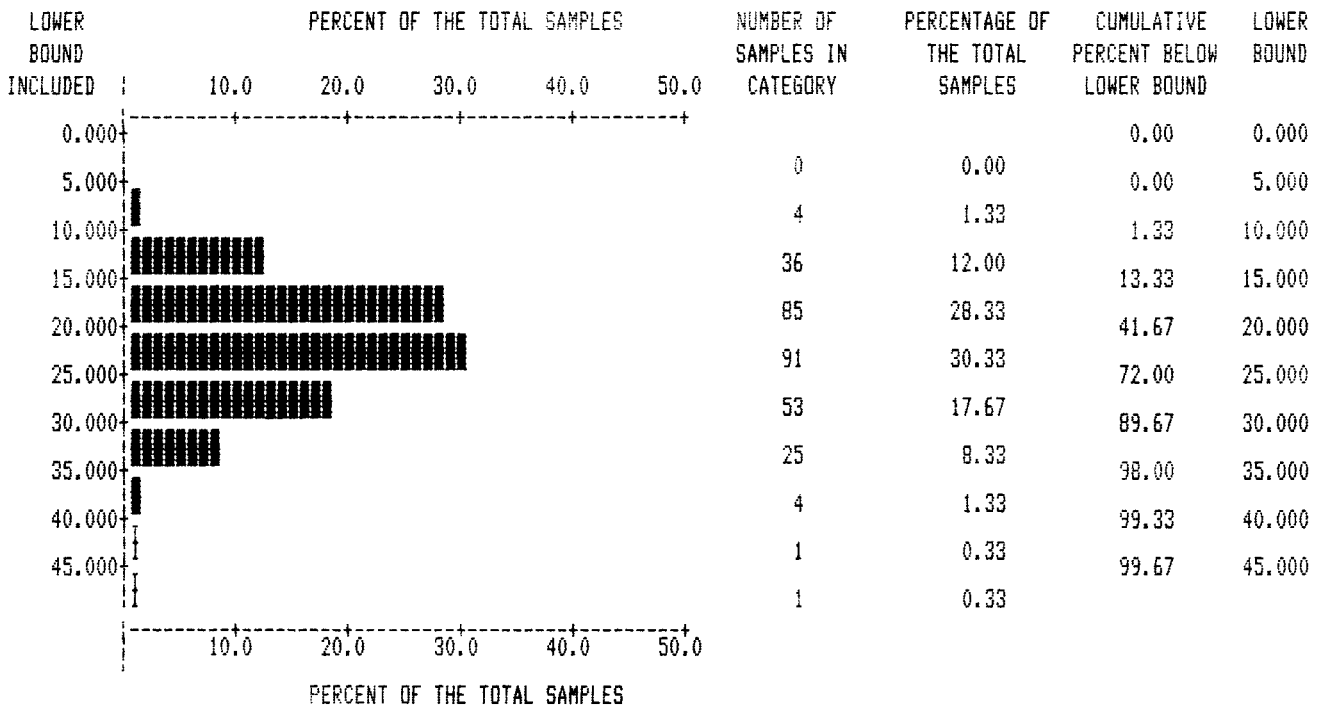
* * * * *
* * * * *
* * * * *
* * * * *
* * * * *

```

06-JAN-88

DATA TITLE : LAST CHANCE SOIL GEOCHEM - 1987

VARIABLE : B

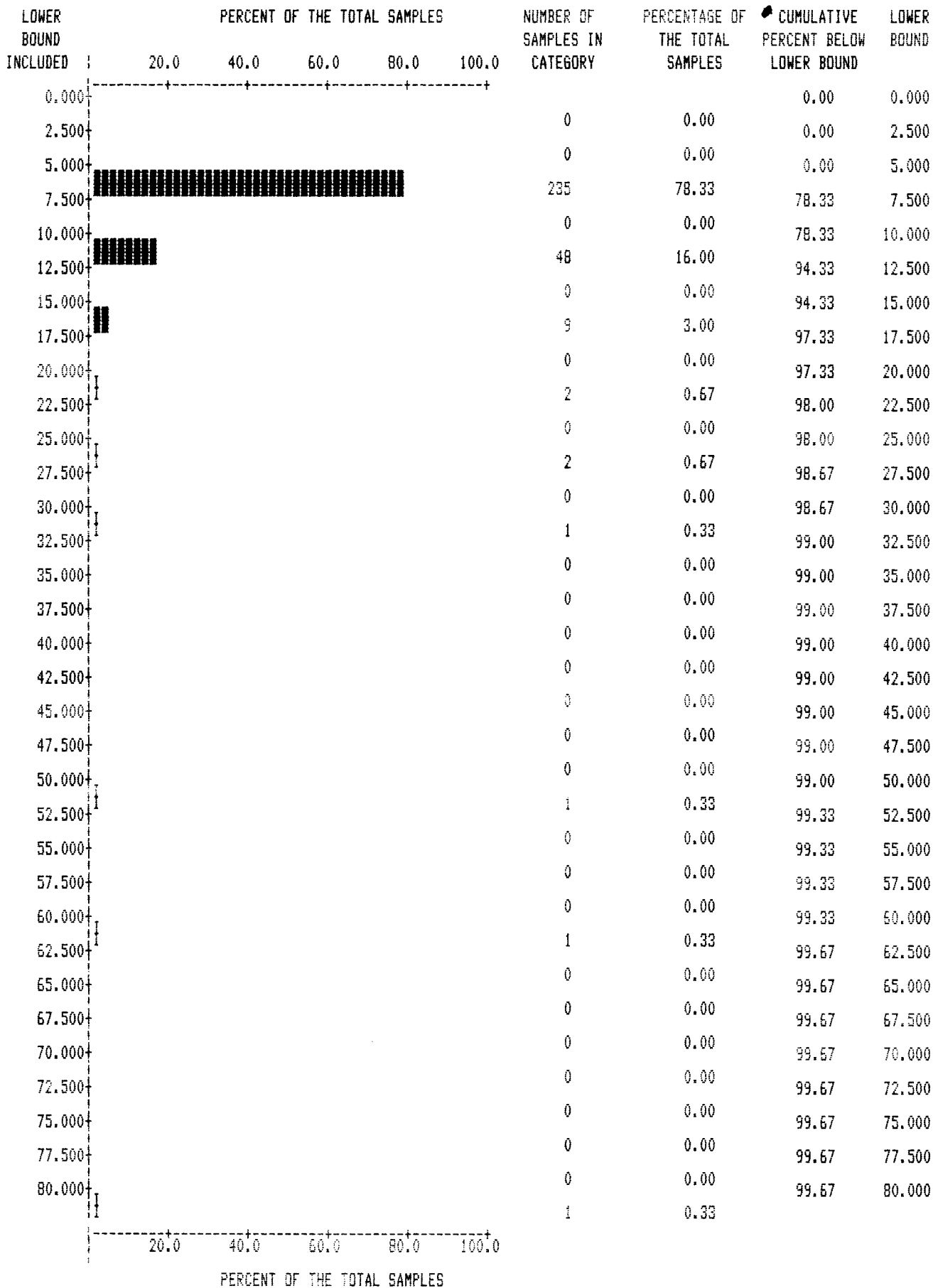


VARIABLE: B  
 NUMBER OF OBSERVATIONS: 300  
 MINIMUM: 7.000  
 MAXIMUM: 47.000  
 MEAN: 21.217  
 STANDARD ERROR OF MEAN: 0.365  
 STANDARD DEVIATION: 6.331  
 COEFFICIENT OF VARIATION: 29.838  
 SKEWNESS: 0.508  
 KURTOSIS: 0.453

\*\*\*\*\*  
 WE WILL NOW MAKE ANOTHER PASS THROUGH THE DATA.  
 THE SAME TRANSFORMATIONS AND SELECTIONS AS LAST RUN WILL BE USED IN THIS RUN.  
 \*\*\*\*\*  
 WE WILL NOW MAKE ANOTHER PASS THROUGH THE DATA.  
 THE SAME TRANSFORMATIONS AND SELECTIONS AS LAST RUN WILL BE USED IN THIS RUN.

DATA TITLE : LAST CHANCE SOIL GEOCHEM - 1987

VARIABLE : AU

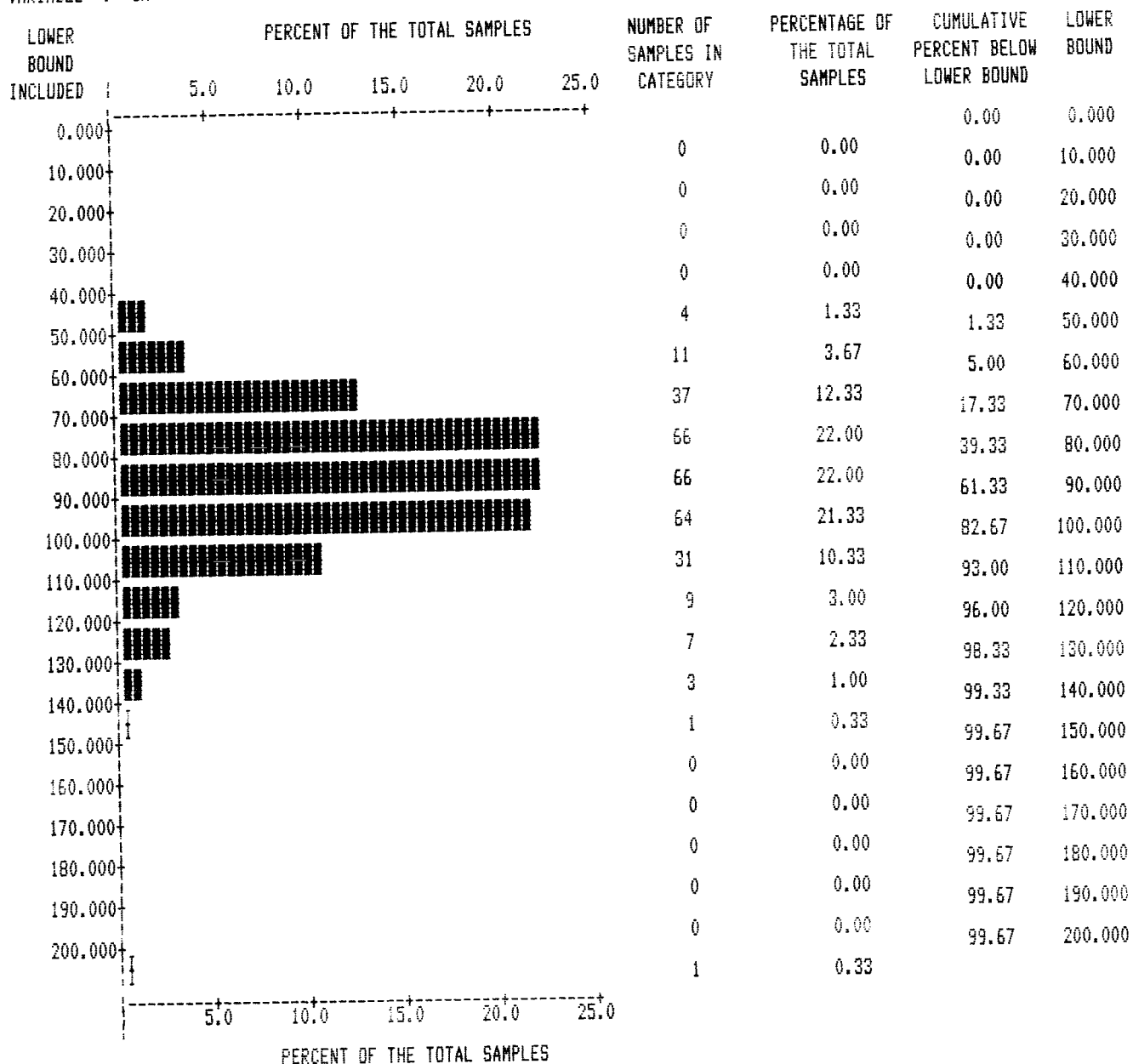




VARIABLE:	AU
NUMBER OF OBSERVATIONS:	300
MINIMUM:	5.000
MAXIMUM:	80.000
MEAN:	7.000
STANDARD ERROR OF MEAN:	0.387
STANDARD DEVIATION:	6.707
COEFFICIENT OF VARIATION:	95.814
SKEWNESS:	7.178
KURTOSIS:	63.385

DATA TITLE : LAST CHANCE SOIL GEOCHEM - 1987

VARIABLE : ZN



VARIABLE: ZN  
 NUMBER OF OBSERVATIONS: 300  
 MINIMUM: 45.000  
 MAXIMUM: 207.000  
 MEAN: 85.317  
 STANDARD ERROR OF MEAN: 1.043  
 STANDARD DEVIATION: 18.060  
 COEFFICIENT OF VARIATION: 21.168  
 SKEWNESS: 1.337  
 KURTOSIS: 6.430

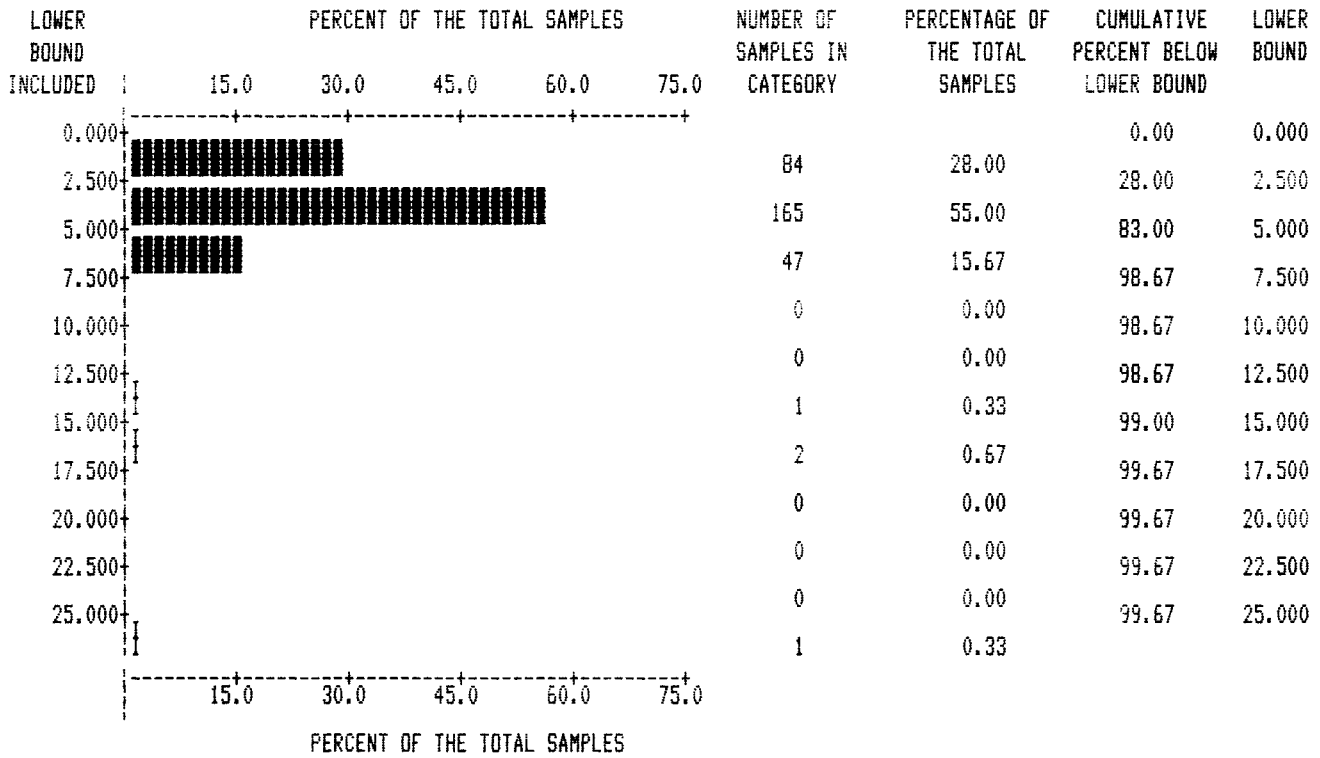
\*\*\*\*\*

WE WILL NOW MAKE ANOTHER PASS THROUGH THE DATA.

THE SAME TRANSFORMATIONS AND SELECTIONS AS LAST RUN WILL BE USED IN THIS RUN.

DATA TITLE : LAST CHANCE SOIL GEOCHEM - 1987

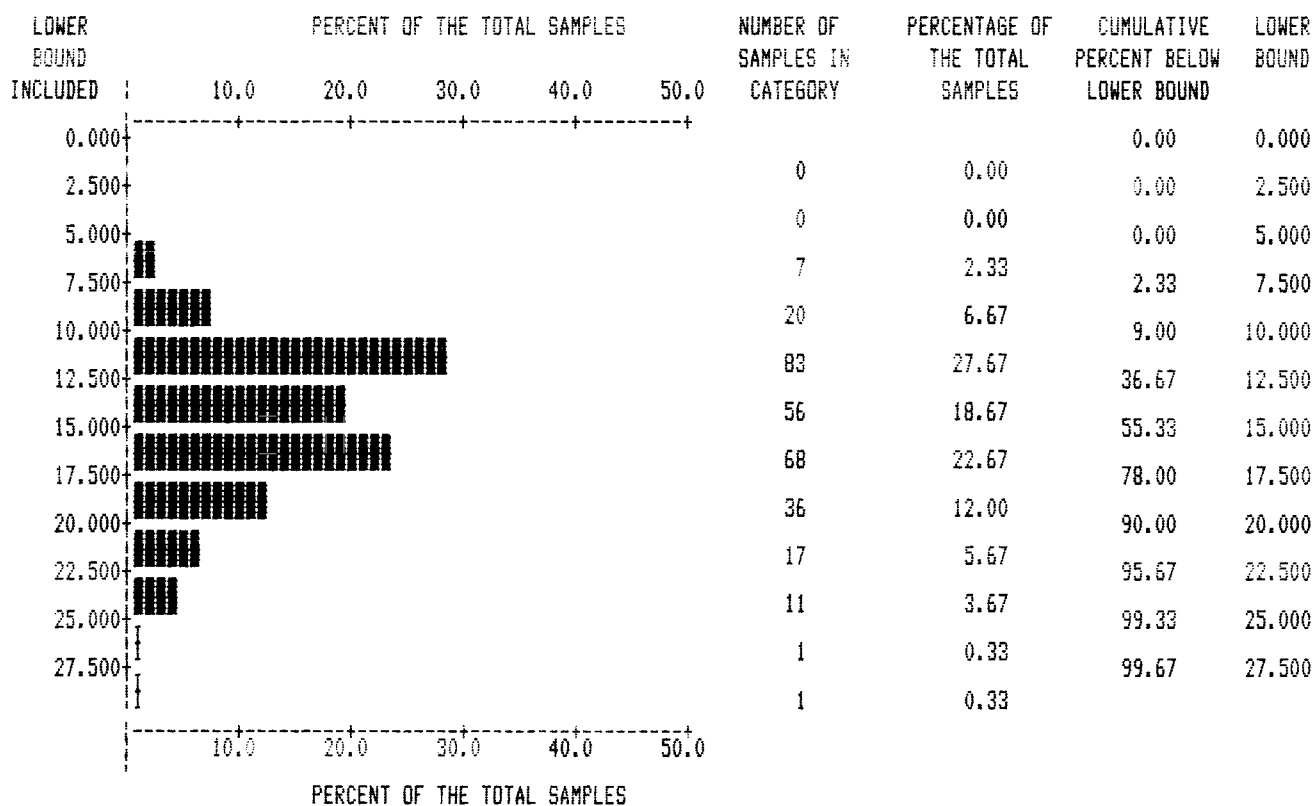
VARIABLE : SB



VARIABLE: SB  
 NUMBER OF OBSERVATIONS: 300  
 MINIMUM: 1.000  
 MAXIMUM: 25.000  
 MEAN: 3.407  
 STANDARD ERROR OF MEAN: 0.131  
 STANDARD DEVIATION: 2.271  
 COEFFICIENT OF VARIATION: 66.670  
 SKEWNESS: 4.482  
 KURTOSIS: 33.704

DATA TITLE : LAST CHANCE SOIL GEOCHEM - 1987

VARIABLE : PB



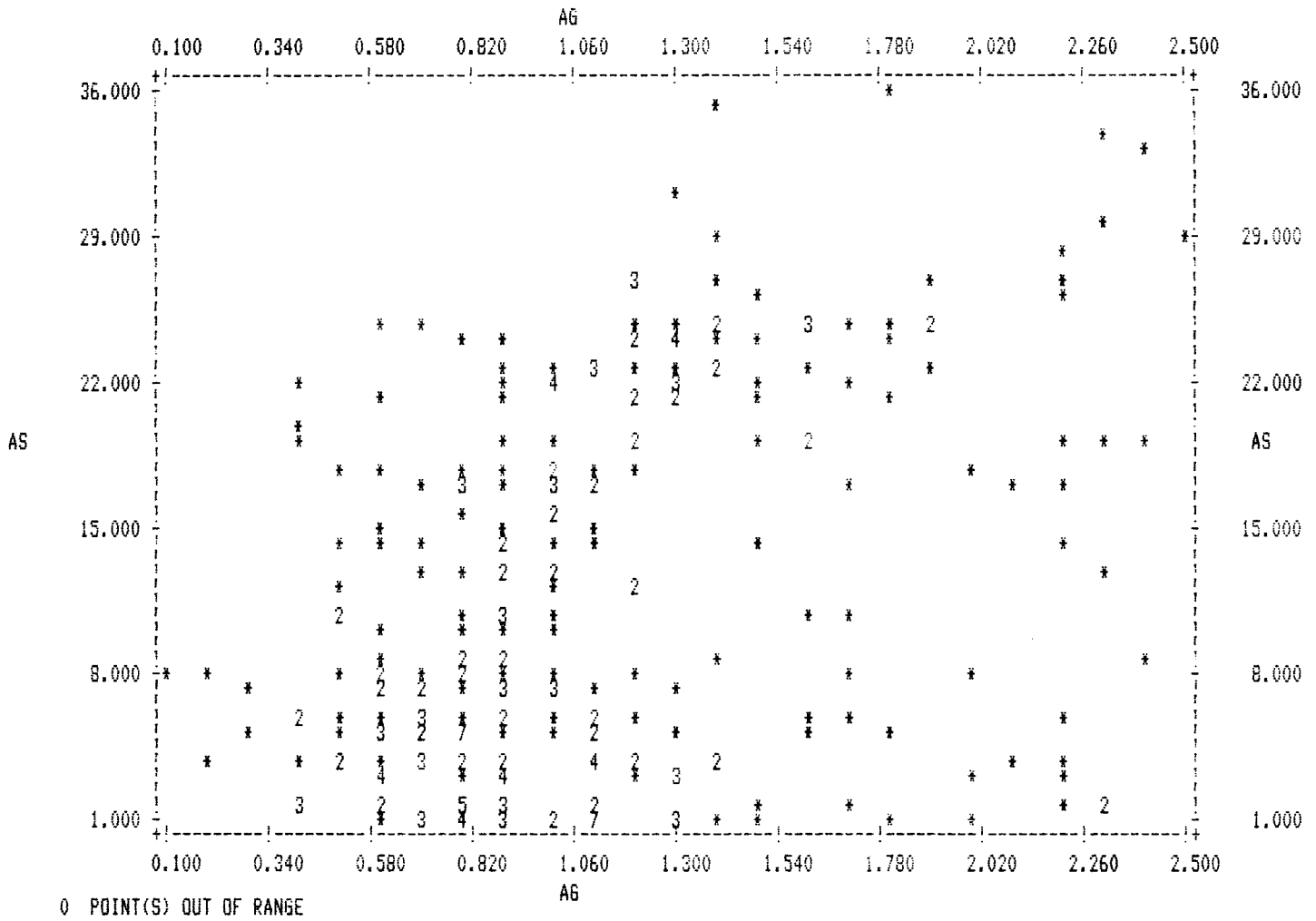
VARIABLE: PB  
 NUMBER OF OBSERVATIONS: 300  
 MINIMUM: 6.000  
 MAXIMUM: 29.000  
 MEAN: 14.317  
 STANDARD ERROR OF MEAN: 0.232  
 STANDARD DEVIATION: 4.012  
 COEFFICIENT OF VARIATION: 28.024  
 SKEWNESS: 0.540  
 KURTOSIS: 0.138

\*\*\*\*\*

WE WILL NOW MAKE ANOTHER PASS THROUGH THE DATA.

THE SAME TRANSFORMATIONS AND SELECTIONS AS LAST RUN WILL BE USED IN THIS RUN.

LAST CHANCE SOIL GEOCHEM - 1987



STATISTICS FOR VARIABLES:	AG	AS
NUMBER OF OBSERVATIONS:	300	300
MINIMUM:	0.10	1.00
MAXIMUM:	2.50	36.00
MEAN:	1.11	11.77
STANDARD ERROR OF MEAN:	0.03	0.51
STANDARD DEVIATION:	0.49	8.90
COEFFICIENT OF VARIATION:	44.30	75.59
SKEWNESS:	0.85	0.52
KURTOSIS:	0.28	-0.97
CORRELATION COEFFICIENT:	0.3521	

Ag x As x Cu

LAST CHANCE SOIL GEOCHEM - 1987

CORRELATION MATRIX: (99.0 INDICATES COEFFICIENT COULD NOT BE CALCULATED)

	AG	AS	<del>B</del>	CU	PB	SB	ZN	AU
AG	1.000	0.352	0.392	0.414	0.211	0.213	-0.003	-0.078
AS	0.352	1.000	0.296	0.111	0.074	0.162	0.088	0.006
B	0.392	0.296	1.000	0.378	0.035	0.311	0.336	-0.026
CU	0.414	0.111	0.378	1.000	0.243	0.162	-0.031	-0.056
PB	0.211	0.074	0.035	0.243	1.000	-0.012	-0.162	-0.092
SB	0.213	0.162	0.311	0.162	-0.012	1.000	0.115	-0.004
ZN	-0.003	0.088	0.336	-0.031	-0.162	0.115	1.000	-0.034
AU	-0.078	0.006	-0.026	-0.056	-0.092	-0.004	-0.034	1.000