

Geological Legend

Quarternary

Qd GLACIAL DRIFT, ALLUVIUM

Tertiary

Tv OLIVINE BASALTS

Ti INTRUSIONS INTERMEDIATE COMPOSITION

Kamloops Group

Ek VOLCANIC FLOWS

Early Jurassic

eJgd WILDHORSE BATHOLITH

Triassic & Jurassic

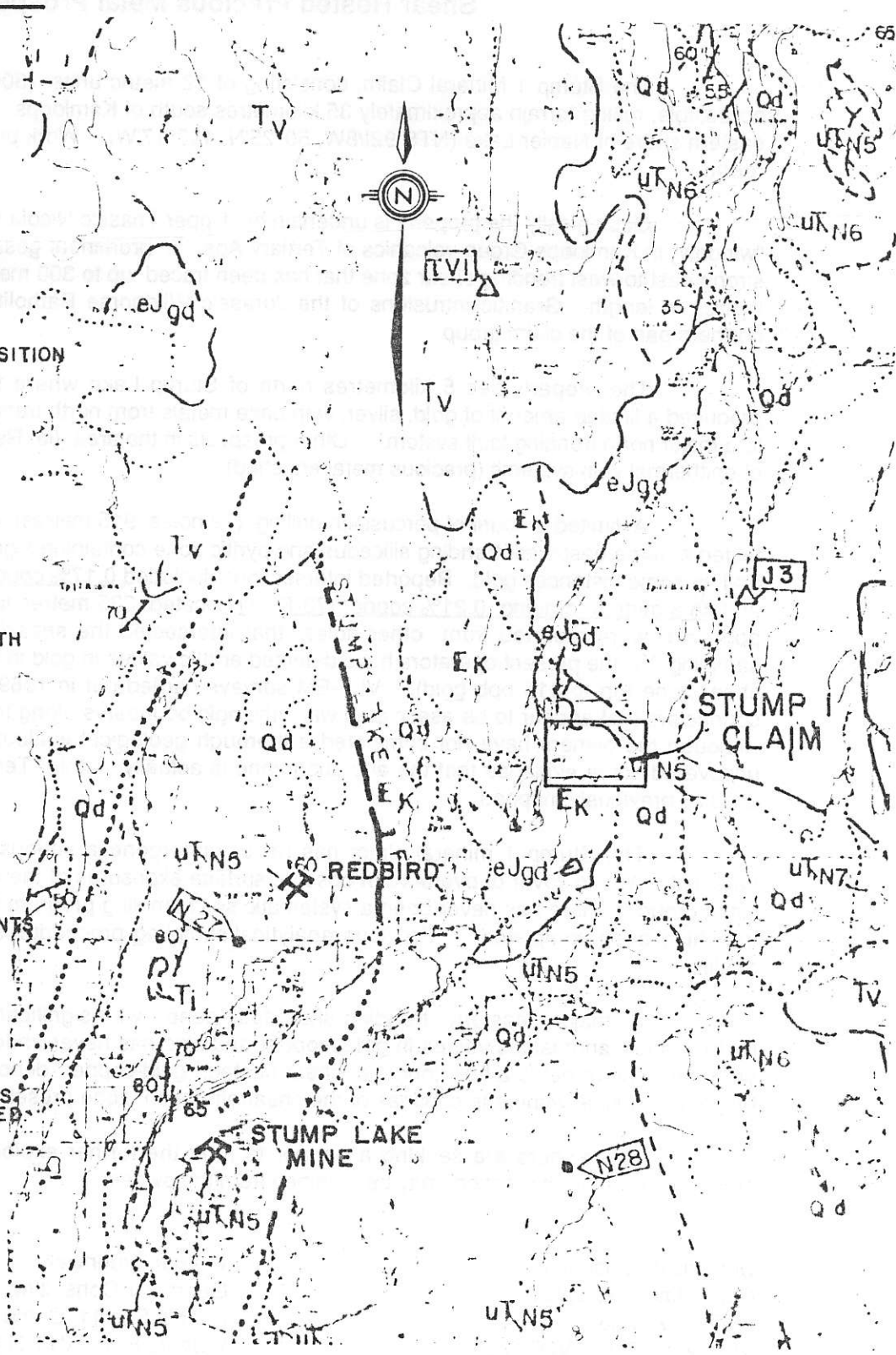
Nicola Group

UTN5 AUGITE PORPHYRY

UTN6 FINE GRAINED SEDIMENTS & VOLCANICLASTICS

UTN7 FOLIATED DIORITES, AMPHIBOLITES

----- FAULTS
DEFINED, APPROXIMATE, ASSUMED



Geology after Monger, 1982

STUMP I CLAIM REGIONAL GEOLOGY

KAMLOOPS MINING DIVISION

N.T.S. 92 I 8

827112

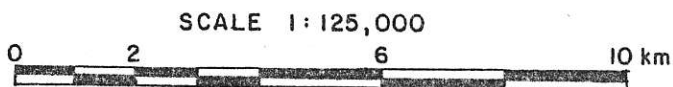


Figure 3

76 Evans

Stump 1 Mineral Claim Shear Hosted Precious Metal Prospect

The Stump 1 Mineral Claim, consisting of 12 metric units (300 hectares) is located in easily accessible, rolling terrain approximately 35 kilometres south of Kamloops, B. C. The claims straddle the eastern shore of Napier Lake (NTS 921/8W, 50°25'N, 120°17'W). Work programs can be conducted year round.

Geologically the property is underlain by Upper Triassic Nicola volcanic rocks that outcrop as a "window" in Kamloops Group volcanics of Tertiary Age. A prominent gossan is closely associated with a strong east to west trending shear zone that has been traced up to 300 metres in width and at least 1,200 metres in length. Granitic intrusions of the Jurassic Wildhorse Batholith have been mapped on the northern part of the claim group.

The property lies 5 kilometres north of Stump Lake where the former Stump Lake Mine produced a limited amount of gold, silver, with base metals from north trending veins thought to be related to a major north trending fault system. Other prospects in the area (ie: Redbird) have the characteristics of epithermal vein systems (precious metal enriched).

A limited amount of percussion drilling (12 holes, 915 metres) completed in the early 1970's tested a large east-west trending siliceous and pyritic zone containing significant amounts of copper, zinc and in some instances gold. Reported intersections included 0.17% copper across 24.4 metres (73-P-8) and 48.8 metres grading 0.21% copper (73-P-11) located 335 metres to the northwest. Values to 230 ppb gold were reported from other holes that intersected the shear/alteration zone. Limited soil sampling by the present operators have detected erratic values in gold in soils associated with the altered shear zone (up to 315 ppb gold). VLF-EM surveys carried out in 1989 have outlined low magnitude conductors that appear to be associated with lithologic boundaries along the periphery of the shear zone. Although the owners have not completed a thorough geological evaluation of the property they have uncovered some evidence that the alteration zone is actually within Tertiary volcanics and not Triassic units as previously mapped.

The Stump 1 mineral claim has never undergone a serious evaluation for precious metal potential. A thin cover of overburden obscures surface exposures of the alteration zone over most of the claim group. There has never been a systematic soil sampling program for precious metals nor has any trenching been completed. Previous analytical/sampling procedures for gold has been of suspect quality.

A major, easterly trending shear/fault zone, with significant alteration (siliceous, sericitic, pyritic) and anomalous values in gold, copper and zinc has never undergone a systematic exploration program. The target is a bulk tonnage, shear hosted, gold-copper deposit. **A 10 to 20 million tonne target is feasible within the confines of the shear/alteration zone presently outlined.**

The owners are seeking a partner to fund the further exploration and development of this property. Further information may be obtained from the owners.

Douglas A. Leishman
Consulting Geologist
P. O. Box 1288
Kamloops, B. C. V2C 6H3

Phone 604-828-6150

Graeme

Werner Gruenwald
Geoquest Consulting Ltd.
RR #3, Site 11, Comp 180
Vernon, B. C. V1T 6L6

Phone or Fax 604-549-5192

857115