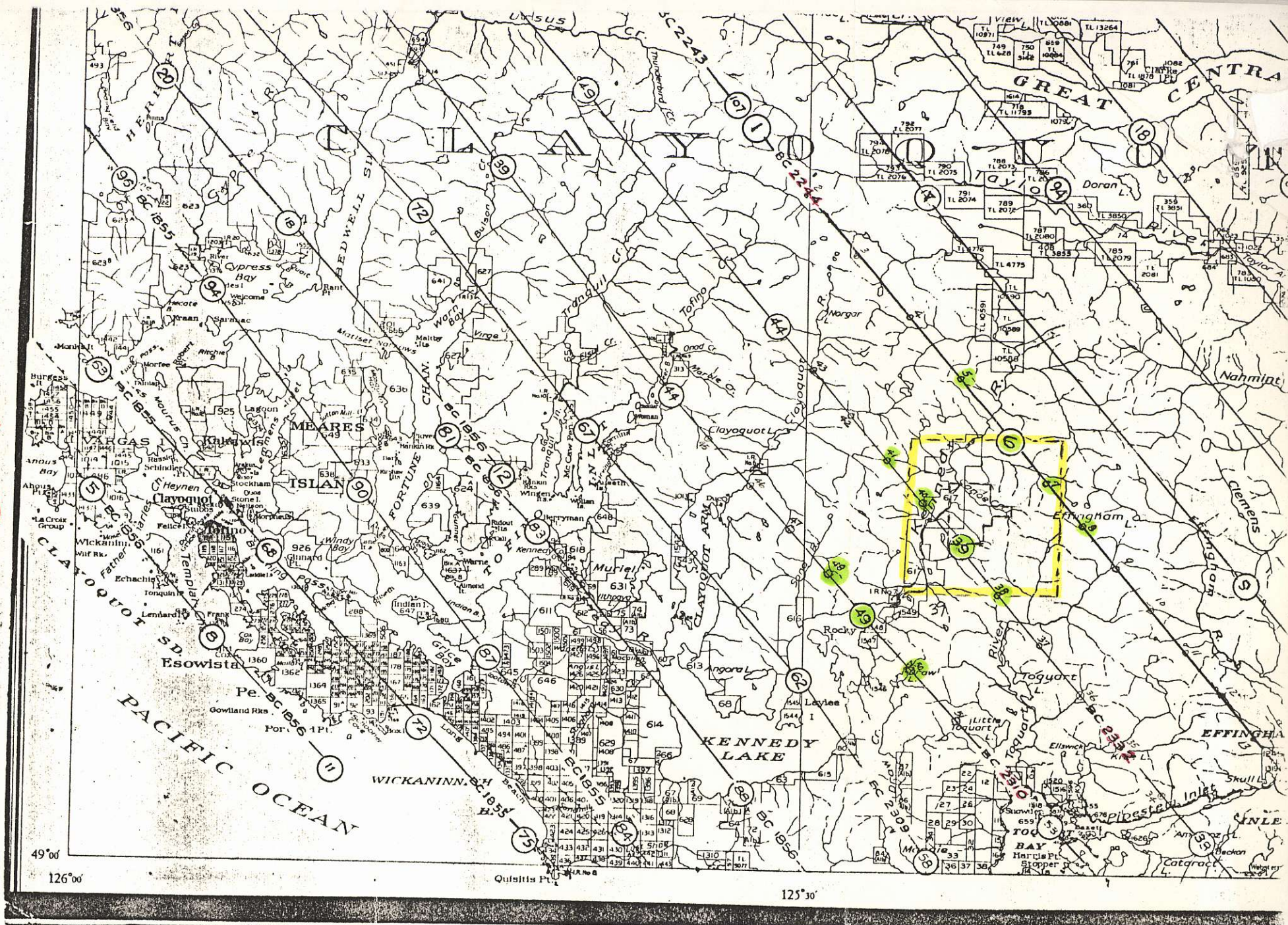


Year Copy

(rebound by the firm)



United Tommy  
Group 92F/3  
827049

↑  
92F-3W/2

92F  
Sheet 4 of 5  
4 mi = 1 in.  
Revised May/60

Bob = ① This is a xerox copy of photo index map (partial) from Victoria.  
 ② Main area of interest others  
 ③ yellow striped lists photos I chose to cover area of interest. Please revise as will. *Jul Chan Oct. 28/86*

MAY 29, 1986  
 B/W  
 PHOTOGRAPHY

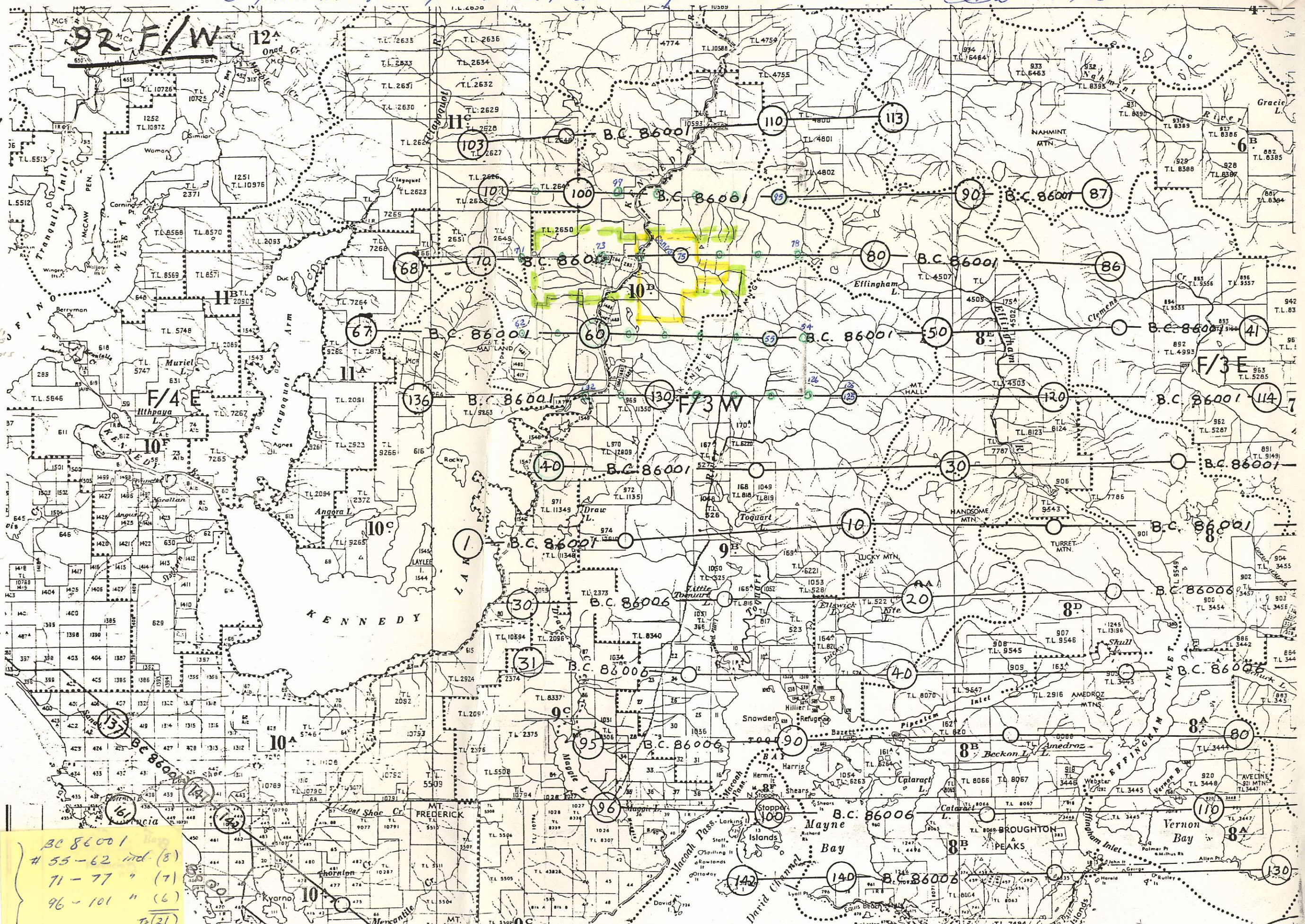
SCALE =  
 1:15,000  
 To Order  
 Quote -  
 ROLL No.

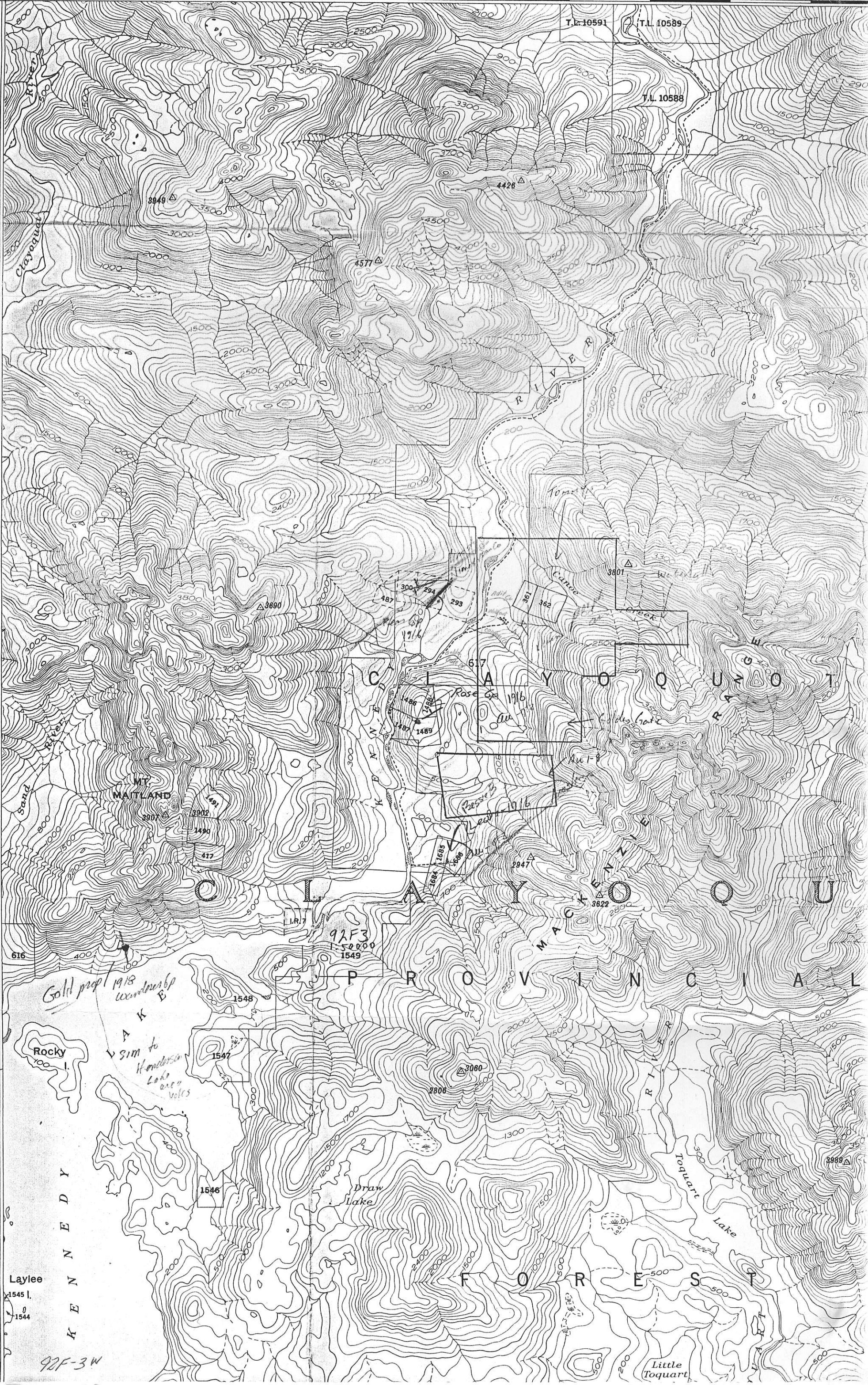
BC 86001  
 #55-60 INCL.  
 #73-78 INCL.  
 #95-100 INCL.  
 #126-132 INCL.

*Revised by F Chan in pencil*

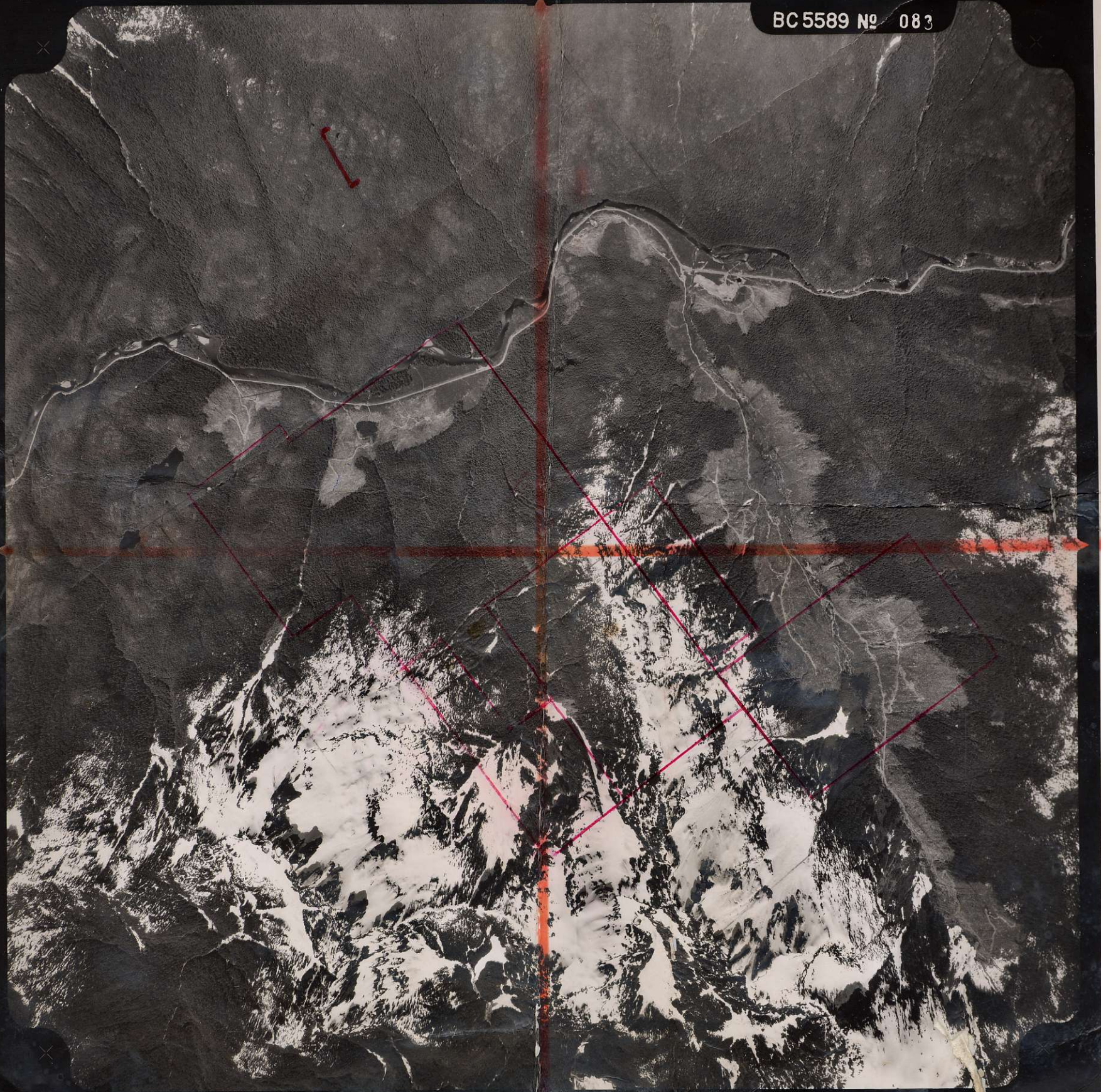
TOTAL  
 NUMBER OF  
 AIR PHOTOS  
 = 24  
 For Stereo  
 Coverage.

BC 86001  
 #55-62 incl (8)  
 71-77 " (7)  
 96-101 " (6)  
 7 (21)









BC 5589 No 083

June 11/44 Photo