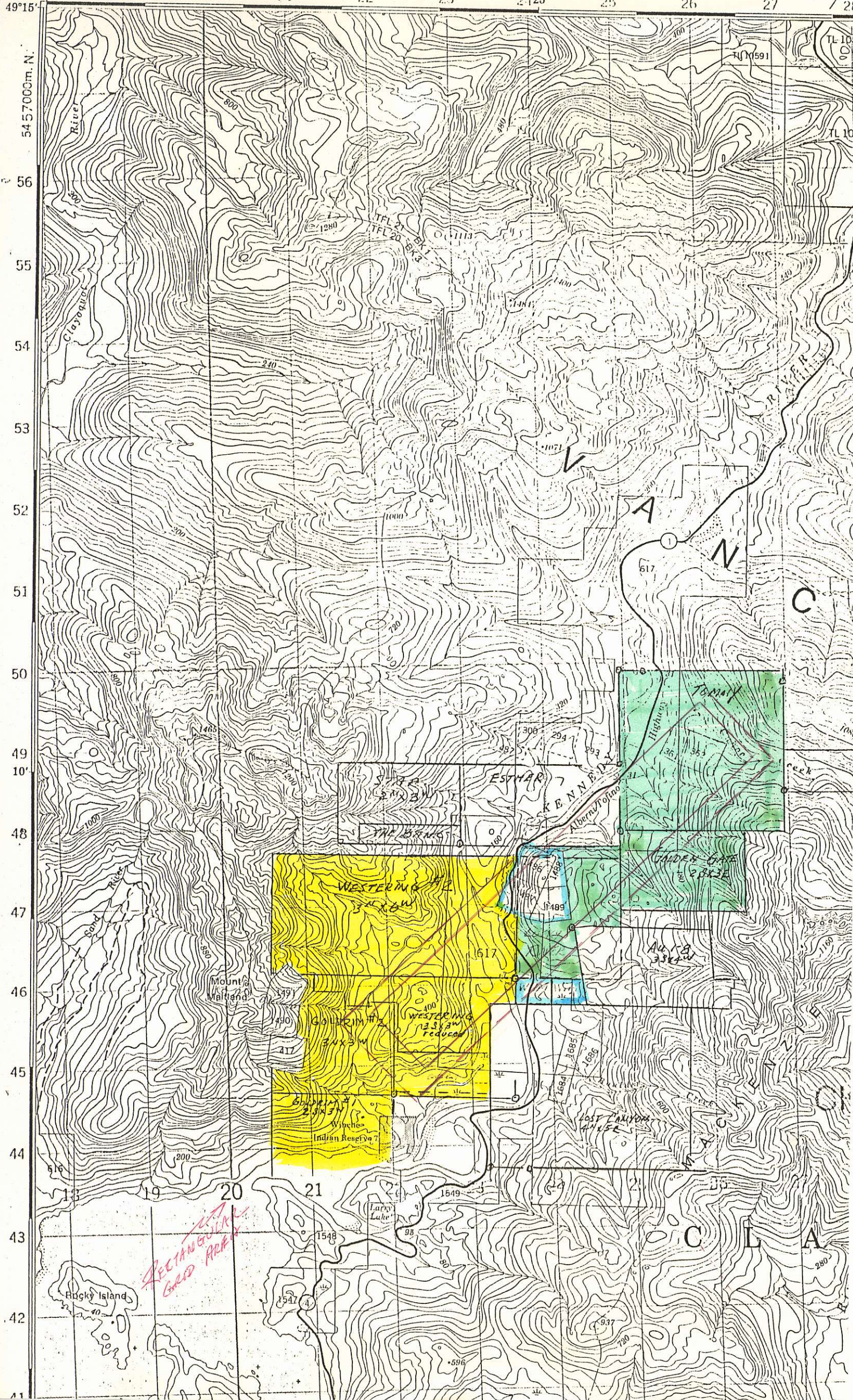


TOMMY & GUPPY CLAIMS 92E/3W 827032



RECTANGULAR GRID AREA

WESTERING #1
3x3W

WESTERING #2
3x3W reduced

TOMMY
GARDEN GATE
28x3E

AUGER
33x4W

C L A

Rocky Island

Larry Lake

LOST LAZYMAN
MINER

ESWAR
K E N N E D Y

Alberni Pottery

A N C

49°15' 56 55 54 53 52 51 50 49 48 47 46 45 44 43 42 41

TL 109
TL 108
TL 107
TL 106
TL 105
TL 104
TL 103
TL 102
TL 101
TL 100
TL 99
TL 98
TL 97
TL 96
TL 95
TL 94
TL 93
TL 92
TL 91
TL 90
TL 89
TL 88
TL 87
TL 86
TL 85
TL 84
TL 83
TL 82
TL 81
TL 80
TL 79
TL 78
TL 77
TL 76
TL 75
TL 74
TL 73
TL 72
TL 71
TL 70
TL 69
TL 68
TL 67
TL 66
TL 65
TL 64
TL 63
TL 62
TL 61
TL 60
TL 59
TL 58
TL 57
TL 56
TL 55
TL 54
TL 53
TL 52
TL 51
TL 50
TL 49
TL 48
TL 47
TL 46
TL 45
TL 44
TL 43
TL 42
TL 41