

827027

CORPORATION FALCONBRIDGE COPPER

MEMORANDUM

→ CMB
Do IT

DATE: Jan. 29, 1987.

TO: A.J.D.

COPIES À
COPIES TO:

DE FROM: C.M.B.

SUJET SUBJECT: **HARDIE MOUNTAIN GROUP 92I/15W**

Alex:

In light of yesterday's McLoughlin talk I suggest we examine the Hardie Mountain area especially the adits and trenches containing chalcedonic quartz veins with associated cinnabar. The ground appears to be open at this time. Assessment work available from the Vancouver office indicates sampling for gold has been limited.

Assessment Reports in Last Chance Area
Hardie Mtn

* 9887
✓* 13216
12259
13618
* 13981
12667
14258
GWR

* 1989
✓ 2467
✓ 10652
✓ 1914
✓ 1789

AR 10,652 - NO AU ASSAYS
- Ward - American unqualif reports
mercury mineralization
Ward claims over old Hardie
group

Assessing Mercury potential

Ecoc Geol 1966 ^{1st ed p. 1018} geochem of
soil unrelated to. min .01 - ~~the~~ .05 ppm

(37) Hardie Mtn.

Quartz occurs within and marginal to
banded shear zones in closely assoc. with
felsic rocks which intrude dark volcanics
Ox bands and most other linear structures
strike NNW Dip 60° ENE

Centre of "Merc" # 17 AR 2467 BCDM

BCDM M GEM 1969-240

" 1970-324

" AR 2467; 1789

"

BCDM Bull 5-45

GSC Mem 249-100

GSC Map 686A

Open file maps J Stevenson Maps 1940

Cookfield W.E GSC Mem 249

Structural Geol of Can Ore Dep CIMM p177

Additional

(58) Lee (Hardie Hill, merc)

63 Criss Creek

104 Eriss Ck. (Placer)

64 Brousseau

Diamond's.

DEPARTMENT OF
MINES AND
BUREAU OF GEOLOGICAL SURVEY

Ver on

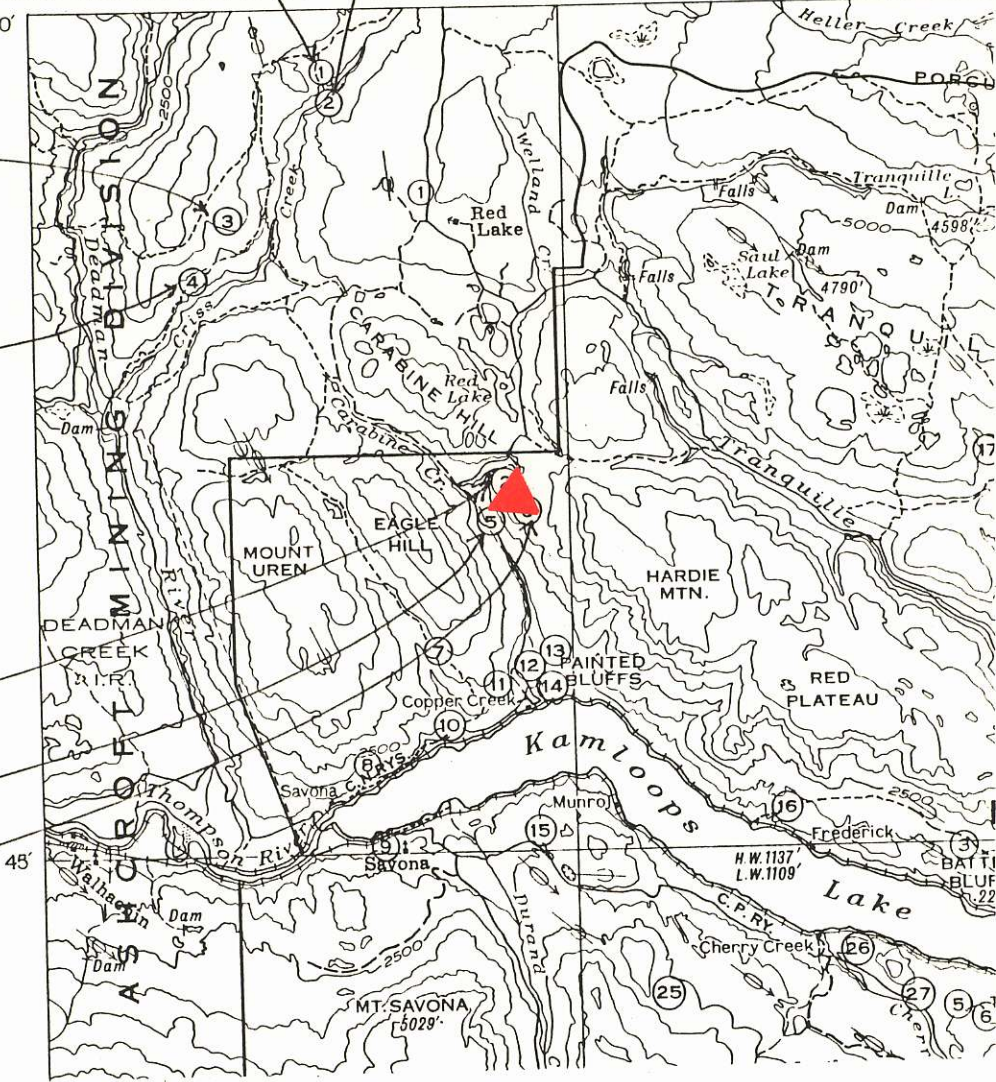
121°00' 45' GEOLGICAL SURVEY 51°00'

Last Chance

Mac Mercury

Hardie Mtn

Mercury Gr.



SHOWINGS & PROSPECTS