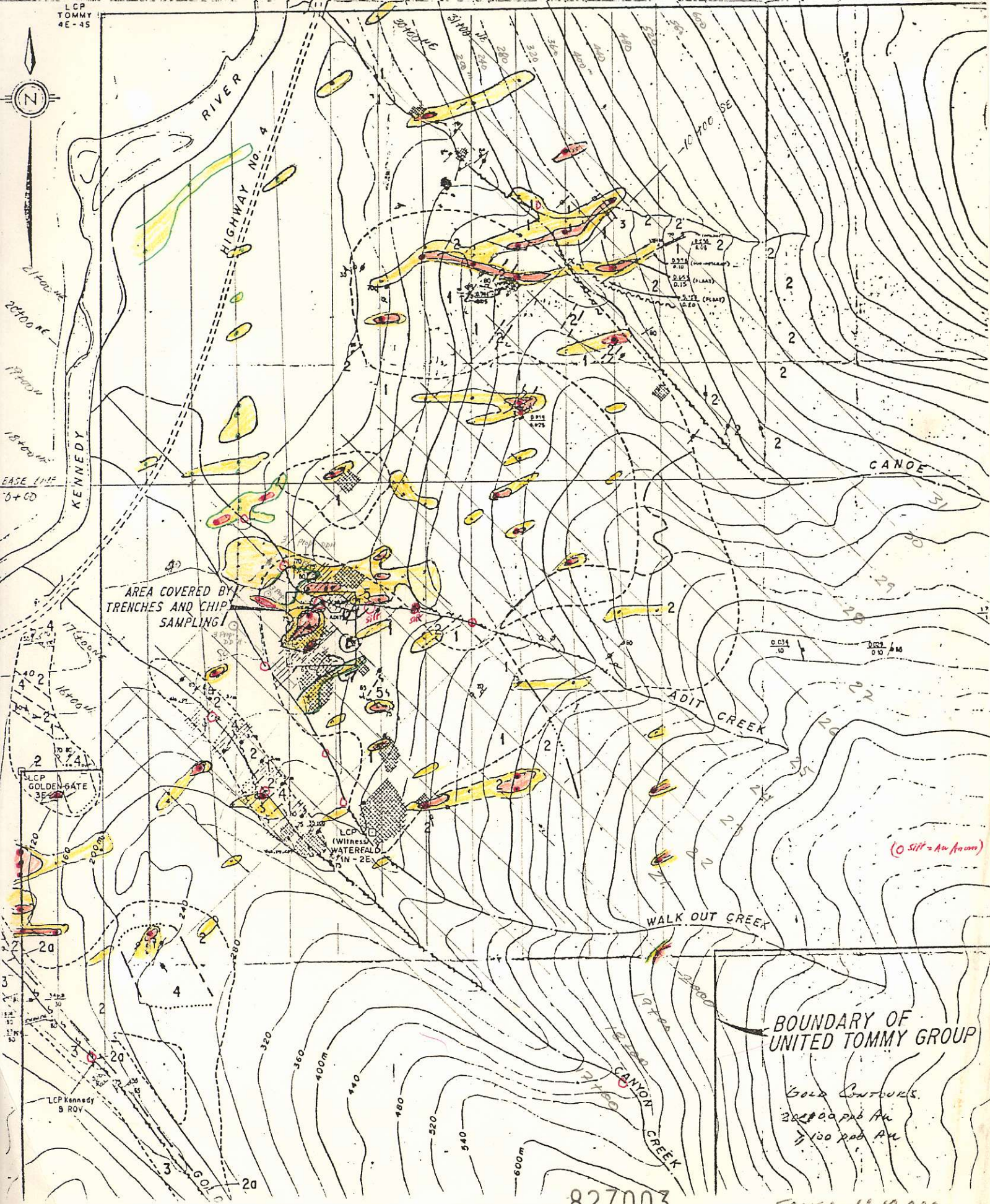
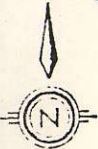


L 0 L 1 E L 2 E L 3 E L 4 E L 5 E L 6 E L 7 E L 8 E L 9 E L 10 E L 11 E L 12 E

LCP TOMMY 4E-45



AREA COVERED BY TRENCHES AND CHIP SAMPLING

LCP GOLDEN GATE 3E

LCP (Witness) WATERFALL 3N-2E

LCP Kennedy 3 ROV

BOUNDARY OF UNITED TOMMY GROUP

Gold Outcrops
20000 ppb Au
100 ppb Au

827003

SCALE: 1:10,000

L 0 L 1 E L 2 E L 3 E L 4 E L 5 E L 6 E L 7 E L 8 E L 9 E L 10 E L 11 E L 12 E

LCP TOMMY 4E-45



20000 NE

BASE LINE 70+00

LCP GOLDEN GATE 3E-23

LCP Kennedy B ROY

AREA COVERED BY TRENCHES AND CHIP SAMPLING

LCP (Witness) WATERFALL PIN - 2E

BOUNDARY OF UNITED TOMMY GROUP

Gold Contours
300000000 Au
100000000 Au

