

JURASSIC

ISLAND INTRUSIONS

- 5 FELSITE - fine grained quartz feldspar dykes and irregular bodies.
- 4 QUARTZ FELDSPAR PORPHYRY - milky anhedral feldspar phenocrysts and glassy quartz in light green siliceous matrix.
- 3 BIOTITE GRANITE - equigranular to porphyritic.

MID TO LATE TRIASSIC

KARLUTSEN FORMATION

- 2 ANDESITE - mottled light to dark green massive locally porphyritic with milky anhedral feldspar crystals. a) Hornfelsed andesite.
- 1 VOLCANIC BRECCIA - angular to sub-rounded olive to dark green fragments in a chloritic matrix.

GEOLOGICAL SYMBOLS

- Limit of geologically mapped outcrop.
- Geological Boundary (definite, approximate, assumed)
- Fault (definite, approximate, assumed)
- Joints (inclined, vertical)
- VEINS**
- Au (oz per ton) / width (metres)
- Veins - quartz, carbonate, and/or sulphide healed (inclined, vertical)
- Isolated vein at least .5 metre thick.
- Area of parallel quartz, carbonate, sulphide vein development. Number of quartz veinlets per metre.
- Area of secondary alteration - as discontinuous fine quartz veinlets and secondary chlorite.
- Adit
- Open cut

ABBREVIATIONS

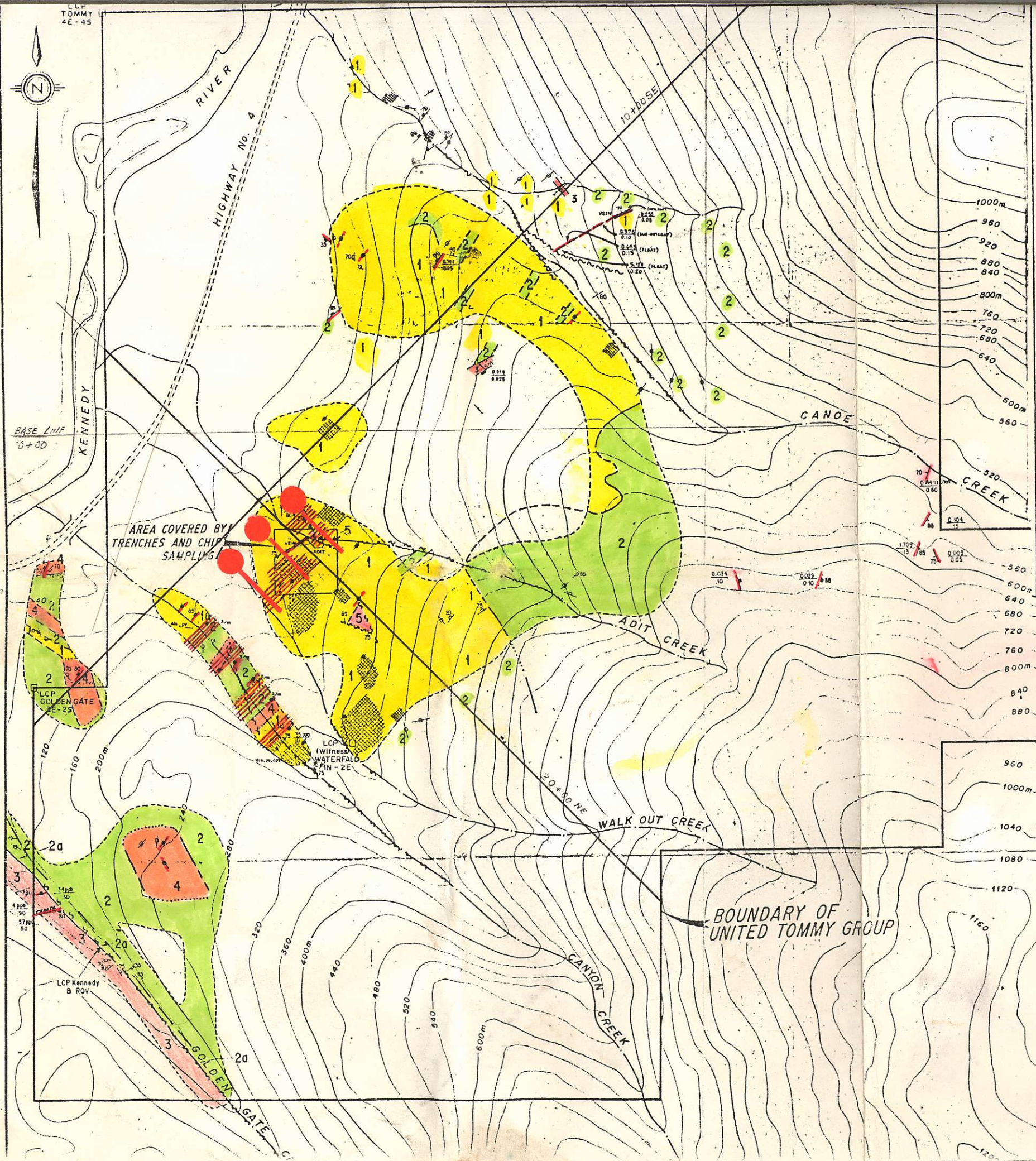
- cpy Chalcopyrite
- dis Disseminated
- ga Galena
- LCP Legal Corner Post
- py Pyrite
- po Pyrrhotite
- sph Sphalerite
- qtz Quartz
- gf Graphite

TECK EXPLORATIONS LIMITED
INTERNATIONAL PHOENIX ENERGY CORP.

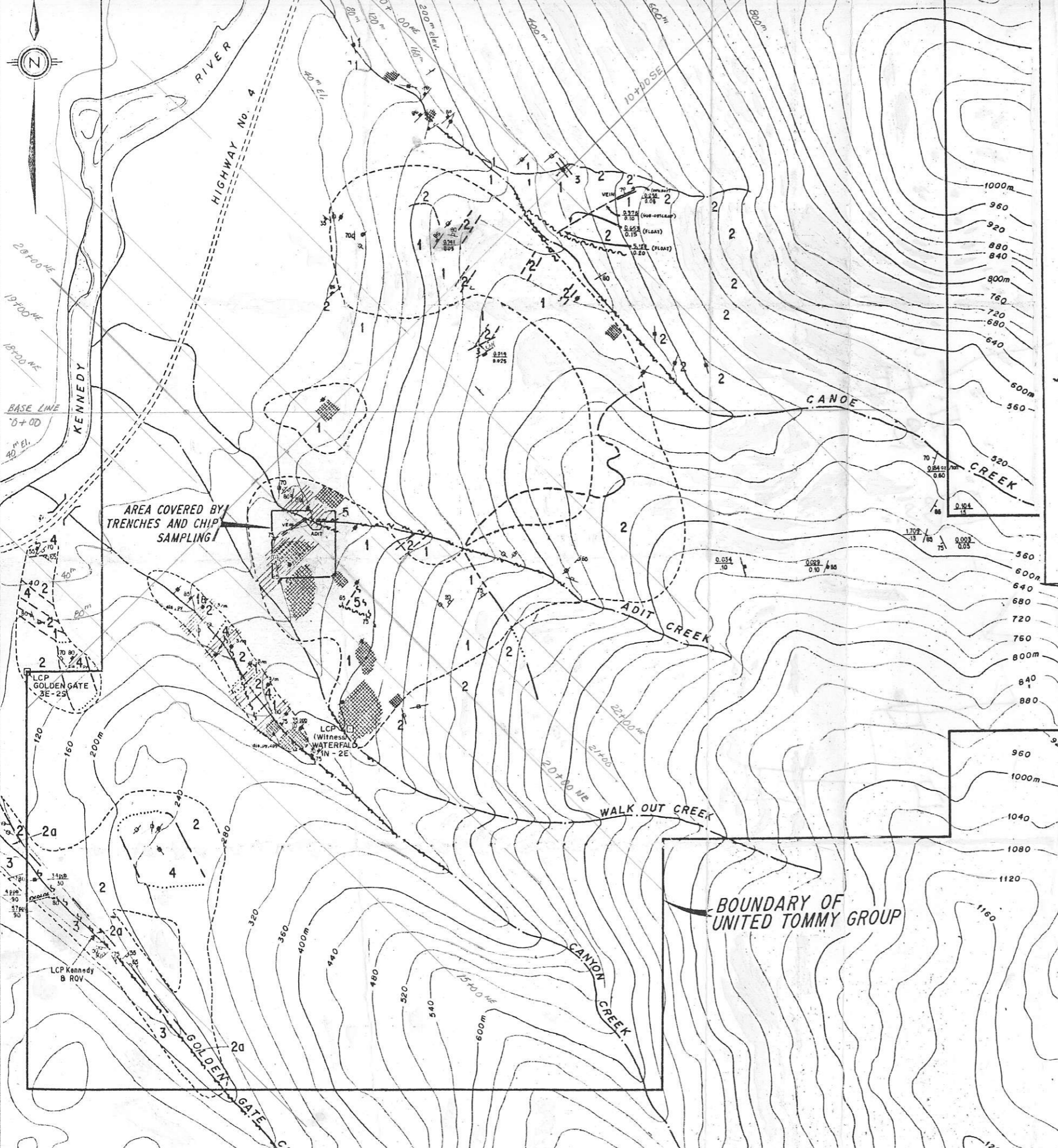
TOMMY
GEOLOGY MAP
FIG. 12

0 100 200 300 400 500 METRES				
SCALE: 1:10,000	DATA BY: R. DURFELD	DRAWN BY: D. SANTOS	DATE: SEPT 1984	REVISION: MAR 85/6L

826999



Proposed 1987 D.D.H. by *Neil Addison*



JURASSIC

- ISLAND INTRUSIONS**
- 5 FELSITE - fine grained quartz feldspar dykes and irregular bodies.
 - 4 QUARTZ FELDSPAR PORPHYRY - milky anhedral feldspar phenocrysts and glassy quartz in light green siliceous matrix.
 - 3 BIOTITE GRANITE - equigranular to porphyritic.

MID TO LATE TRIASSIC

- KARMUTSEN FORMATION**
- 2 ANDESITE - mottled light to dark green massive locally porphyritic with milky anhedral feldspar crystals. a) Hornfelsed andesite.
 - 1 VOLCANIC BRECCIA - angular to sub-rounded olive to dark green fragments in a chloritic matrix.

GEOLOGICAL SYMBOLS

- Limit of geologically mapped outcrop.
- Geological Boundary (definite, approximate, assumed)
- Fault (definite, approximate, assumed)
- Joints (inclined, vertical)
- VEINS
- Au (oz per ton) / width (metres)
- Veins - quartz, carbonate, and/or sulphide healed (inclined, vertical)
- Isolated vein at least .5 metre thick.
- Area of parallel quartz, carbonate, sulphide vein development. Number of quartz veinlets per metre.
- Area of secondary alteration - as discontinuous fine quartz veinlets and secondary chlorite.
- Adit
- Open cut

Proposed 1987 D.D. HOLES

ABBREVIATIONS

- cpy Chalcopyrite
- dis Disseminated
- ga Galena
- LCP Legal Corner Post
- py Pyrite
- pc Pyrrhotite
- sph Sphalerite
- qtz Quartz
- gf Graphite

TECK EXPLORATIONS LIMITED
INTERNATIONAL PHOENIX ENERGY CORP.

GEOLOGY MAP
FIG. 12



SCALE: 1:10000	DATA BY: R. DURFELD	DRAWN BY: D. SANTOS	DATE: SEPT 1984	REVISION: MAR '85/G.L.
-------------------	------------------------	------------------------	--------------------	---------------------------