

## SUMMARY REPORT ON THE SPRAY AND FOAM CLAIMS

( 92 I/12W )

OCTOBER 24, 1985

---

The SPRAY and FOAM claims are currently held by Geostar and Miramar Resources, Larry Barr, President. They acquired the claims from Greg McKillop, formerly of Duval. The SPRAY and FOAM claims cover the southern part of the TOW 1-4 claims, which were staked by Duval in 1978 and explored by them in the period 1978-1981 primarily for porphyry molybdenum mineralization. Duval personnel under Greg's supervision collected soil and silt samples and bulk rock chip samples. According to the assessment reports, these samples were all taken over 10 meter widths, and thus are anything but high-graded! Four diamond drill holes were executed on the TOW claims in 1981, two of them, CH81-3 and CH81-4, on the SPRAY claims (Figure 1).

Three small quartz diorite bodies are exposed on the claims. The largest of them measures 300 X 500 m ( Figure 1 ). A zone of anomalous Au and As in soils and bulk rock chip samples roughly coincides with this intrusion. Au ranges up to 1080 ppb, with 19 values greater than 89 ppb. There are 37 arsenics greater than 99 ppm; values of 10,000 ppm are common. An abysmal map drafted by T. Toop in the Miramar file reports a trench sample containing .35 oz/ton Au, 2.44 oz/ton Ag. The sample is located very poorly and thus does not appear on Figure 1.

Hole CH81-4 is collared near the southern border of the intrusion. The interval 36-57 meters in it, analysed in 3 m sections, contains overall 3670 ppb (.11 oz/ton) Au, with a high of 7860 ppb (.24 oz/ton) over 3 m. Greg believes this intersection to be equivalent to a 7 m - wide zone of quartz veining on surface. The zone trends NW.

Gold values in the core are much higher than those encountered on surface in this zone. The contrast may be due to one or a combination of the following factors:

1. oxidation and weathering on surface that have led to depletion of Au
2. bulk rock samples not representative of specific vein or local stockwork targets; overly diluted by unmineralized material
3. a true grade increase with depth in the hole.

High Au values in the drill holes correlate with Zn and Ag. Greg reported that veins exposed on surface contain pyrite, chalcopyrite, molybdenite, pyrrhotite, arsenopyrite, sphalerite, and rare scheelite.

### Models

The association of gold in veins with sphalerite and silver in this intrusion suggests that it is not a "gold porphyry" target like Poison Mountain, but a system of veins and stockworks like the Abo property. The presence of high grade sections - .35 and .24 oz/ton - is encouraging.

Tonnage potential for the vein zone intersected by Duval might be roughed out as follows:

$$\begin{array}{r}
 10 \text{ m} \quad \times \quad 300\text{m} \quad \times \quad 200 \text{ m} \quad \times \quad 3 \quad = \quad 1.8 \text{ m.t.} \quad \times \quad .11 \text{ oz} \\
 \text{thickness} \quad \text{width of} \quad \text{possible depth} \\
 \quad \quad \quad \text{intrusion}
 \end{array}$$

*WITH DIL & GEC 0.09*

Other targets include a vein swarm in the center of the intrusion; and a linear zone of high Au values ( 460, 1080, 275 ppb ) that trends from the ridge down a gully north and east of the intrusion.

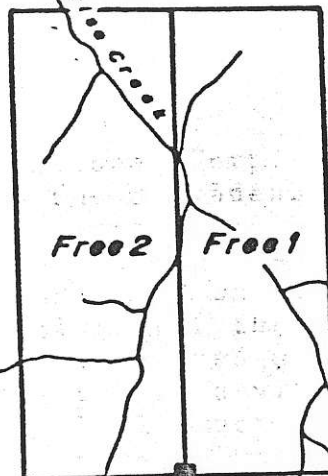
### Recommendations

The veins and stockworks within the quartz diorite on the SPRAY claims need to be mapped and sampled in detail. For this purpose a grid should be laid out and mapped at 1:1000 scale. Soil samples could be taken at the same time.

The zone intersected by CH81-4 needs to be outlined by 6-10 more holes, preferably fanned from several sites along the same spur as the original drill site. The average slope along the spur is 33°, so a small rig is clearly preferred. The maximum required hole depth at this stage is 300 m. Further drilling should test the two other targets mentioned above on a reconnaissance basis.

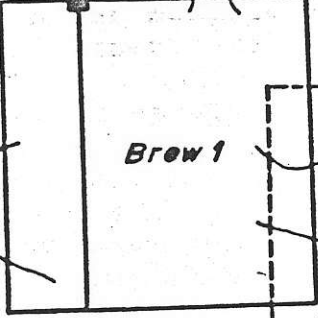
*J. Nelson*

122°00'



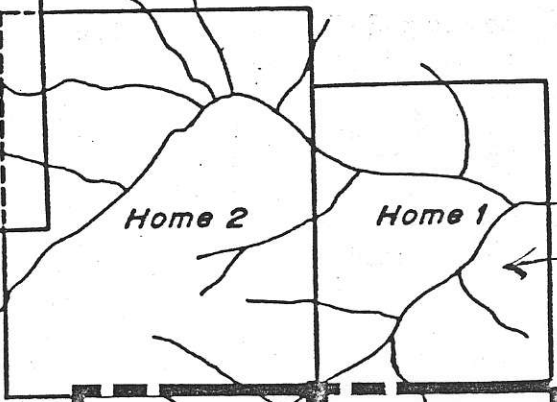
Brew 2

Brew 1



Home 2

Home 1

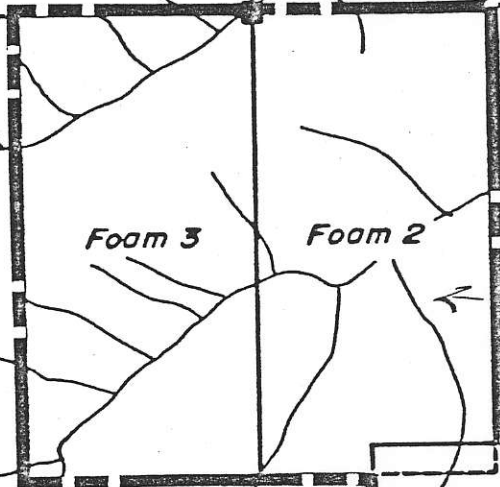


Riley Creek

no interest

Foam 3

Foam 2

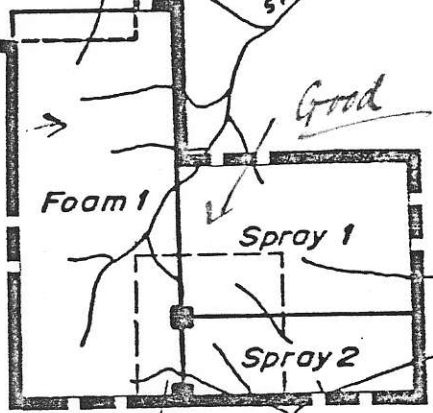


Towlock Creek

not as interesting as spray creek

Spray Creek

interesting



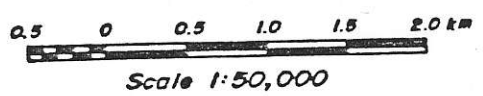
Good

Foam 1

Spray 1

Spray 2

See Fig 3



Miramar Energy Corporation

CLAIM MAP

Spray & Foam Claims

Lillooet Mining Division

NTS: 92I/I2W

JULY, 1985

FIGURE 2

