

826943

92J

KERR ADDISON MINES LIMITED

(FOR INTER-OFFICE USE ONLY)

I.D.B.
P.B.
J.K.C.
A.H.C.
P.S.C.
D.M.H.

J.B.S.

To..... D. A. Lowrie..... From..... C. K. Wilton.....

Subject..... Pacific Eastern claims, Bralorne Camp, B.C. Date..... April 2, 1984.....

FILE

We have no more data on file than that included in the attached reports (a memo by Glen Hogg on December 26, 1973 and a letter by Herb Cox on July 5, 1973).

Arscott's memo to Dujardin of March 16, 1984 comments favourably on the potential of the Pacific Eastern claims without being specific about recommendations for a work program. There is nothing in the memo about the terms wanted for a deal. what deal?

I have no hesitation in recommending follow-up of this situation.

C. K. Wilton

CKW/sm

Attachments

(Arscott's)
The report was intended to describe an area of interest for future exploration
D.W. April 3/84

Thus looks interesting !!

R. Dujardin has been advised of our interest

Subject Pacific Eastern Canada, Alberta Camp
 From
 Date

A review of the Barform camp at Barform River in B.C. prompted by a property submission for the subject Pacific Eastern claims, has revealed a good to excellent potential for the latter ground.

This potential is based on:

The presence of an almost ideal lithologic sequence related to the Pacific Eastern claims relative to the Barform system, especially similar to certain other major gold producing areas such as the Ketchikan system in the State of Alaska.

The general type of success in future exploration there because

(a) The application of modern exploration techniques in the Pacific is still in its infancy. Some have been used,

ckw anything on file? (LH)

I remember Byrnes
 was involved in this area
 years ago

This may be worth some
 deep drilling!

April 2/44 BSR

KERR ADDISON MINES LIMITED

(FOR INTER-OFFICE USE ONLY)

To R. A. Dujardin From D. Arscott

Subject Pacific Eastern Claims, Bralorne Camp Date March 16, 1984

A review of the Bralorne camp at Bridge River in B.C., prompted by a property submission for the adjacent Pacific Eastern claims, has revealed a good to excellent potential for the latter ground.

This potential is based on:

1. The presence of an almost identical lithologic-tectonic setting on the Pacific Eastern claims relative to the Bralorne - a setting remarkably similar to certain other major gold producing areas such as the Mother Lode system in the Sierra Nevada.

2. The probability of success in future exploration there because of:

- a) The application of modern exploration techniques on the Pacific Eastern ground. None have been used, and several are directly applicable
- b) The high ore to waste ratio in the known mines, their frequency of occurrence, and their depth extent (6000 feet in the case of Bralorne itself)
- c) The availability of new theoretical information reflecting on the mode of emplacement of these deposits. Current work by several academics is sufficiently practical that it may well shed light on mechanisms of ore emplacement, host structure, and metal zoning.

KERR ADDISON MINES LIMITED

(FOR INTER-OFFICE USE ONLY)

To..... R.A. Dujardin..... From..... D. Arscott.....

Subject..... Pacific Eastern Claims..... Date.....

- 2 -

The Pacific Eastern claims cover a 4 mile strike length of the favourable belt. Fairly substantial underground work (including some 4000 of drifting and cross cutting) has been carried out at west end of the claims and this is at first sight discouraging. However the following points are pertinent:

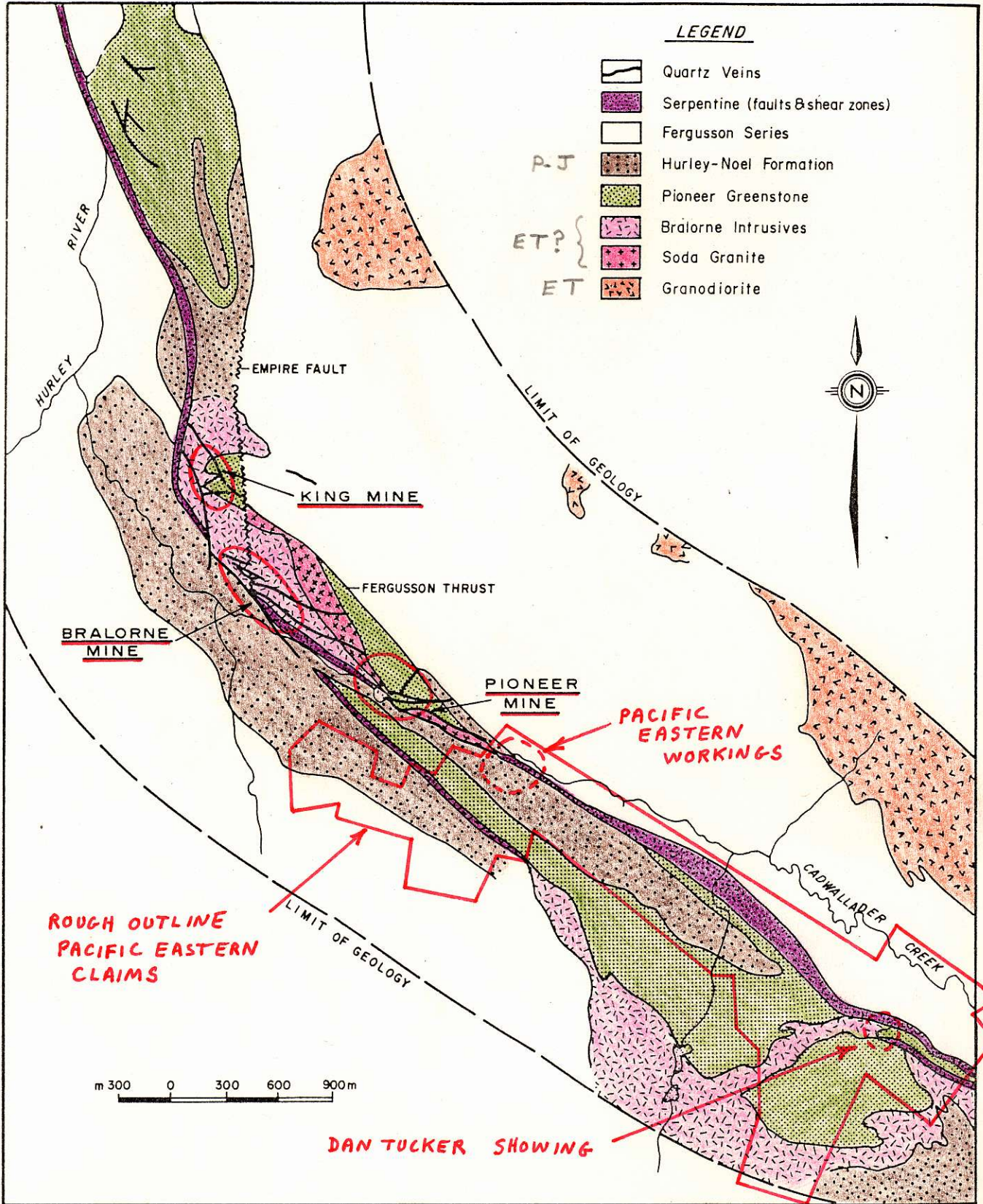
- a) The underground work intersected one sub-economic ore chute with average grade along one drift of 0.58 oz/ton Au over a 1 foot width and 96 foot length.
- b) A number of quartz veins are present for which assays are not available
- c) The price of gold is now substantially higher than when this work was done
- d) Only 12% of the favourable belt within the claims has been explored with this intensity.


Exploration costs will be initially high, but much data is already available. I believe the quality of the target type (Bralorne-King, 5.5 million tons at 0.51 oz per ton), and the very reasonable chance of intersecting a similar deposit on the Pacific Eastern claims, more than justify Kerr's participation.

A more detailed analysis follows.

Respectfully,

David Arscott, P.Eng.
15 Mar 84.



 E & B EXPLORATIONS INC. VANCOUVER CANADA	BRALORNE PROJECT				
	GENERAL GEOLOGY				
DATE	OFFICE	DEPARTMENT	MAP INDEX NO.	SCALE	DRAWING NO.
				1: 31680 or 1" = 1/2 mi.	FIG 3.2

NORTHWEST

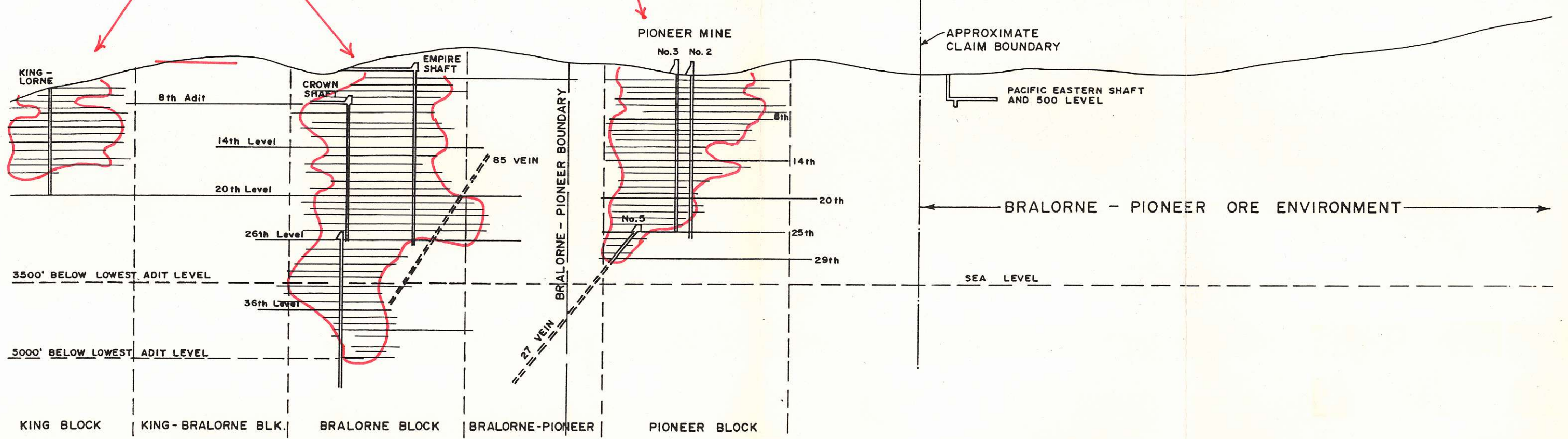
SOUTHEAST

Cumulative Prodⁿ:
5.5 m.t. @ 0.51oz/t. Au

2.5 m.t. @
0.54oz/t. Au

E. & B. EXPLORATION INC.

NORMINE RESOURCES LTD.



NORMINE RESOURCES LTD.

LONGITUDINAL SECTION
BRALORNE - PIONEER -
PACIFIC EASTERN WORKINGS

DATE: 83-05-18 JOB NO.: 83-16

APPROVED BY: FIG. NO.:

▲▲ BEMA INDUSTRIES LTD.

SCALE: 1 IN. = APPROX. 2,000'