

Fig 3. Trace Element
Locations

EAST

1992
Lemare
826874
092L/05

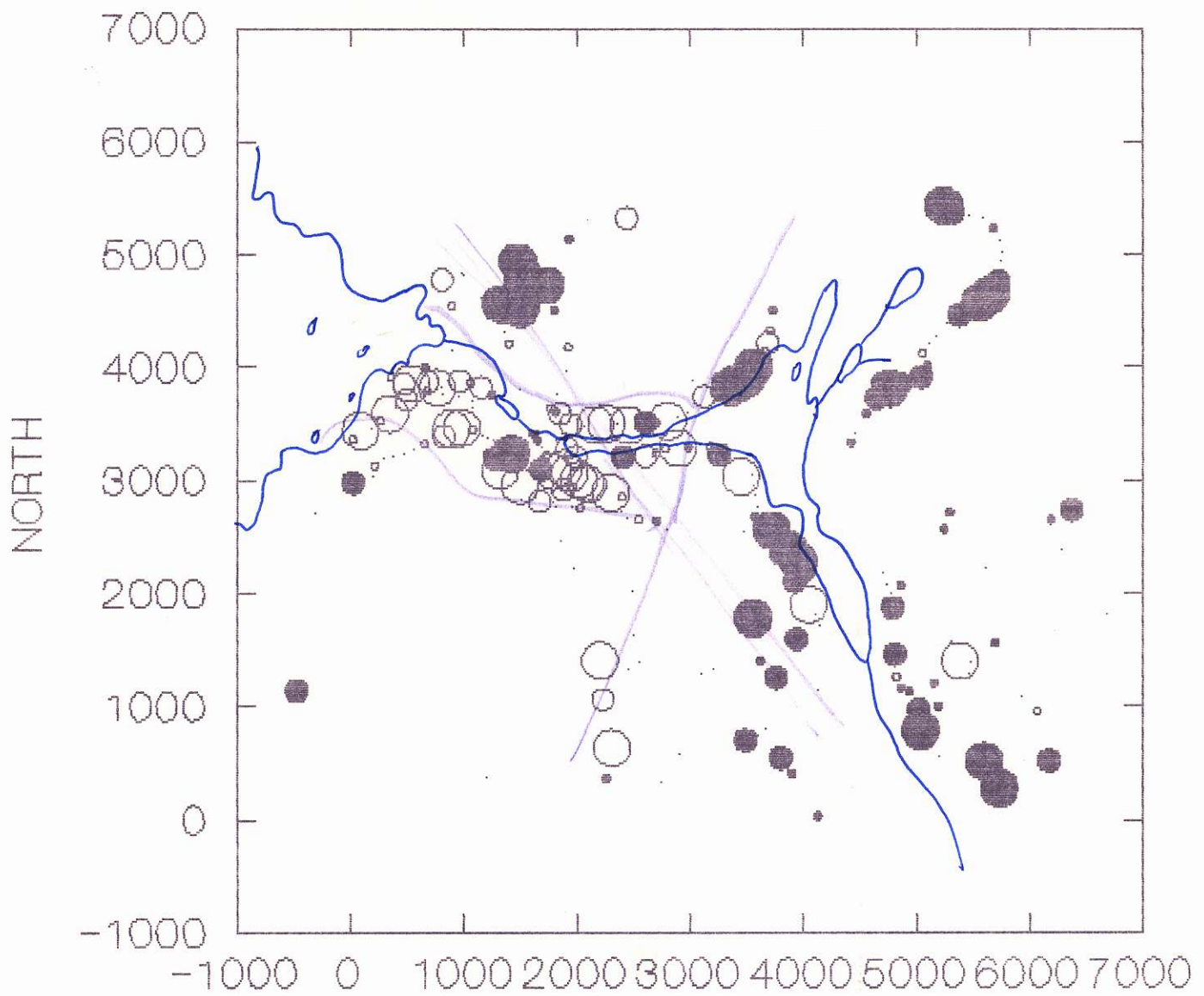


Fig. 4 Potassium Mobility
 Size of circle \approx magnitude
 Open circle \approx Potassium
 Enhancement
 EAST
 Filled Circle \approx Potassium
 Depletion

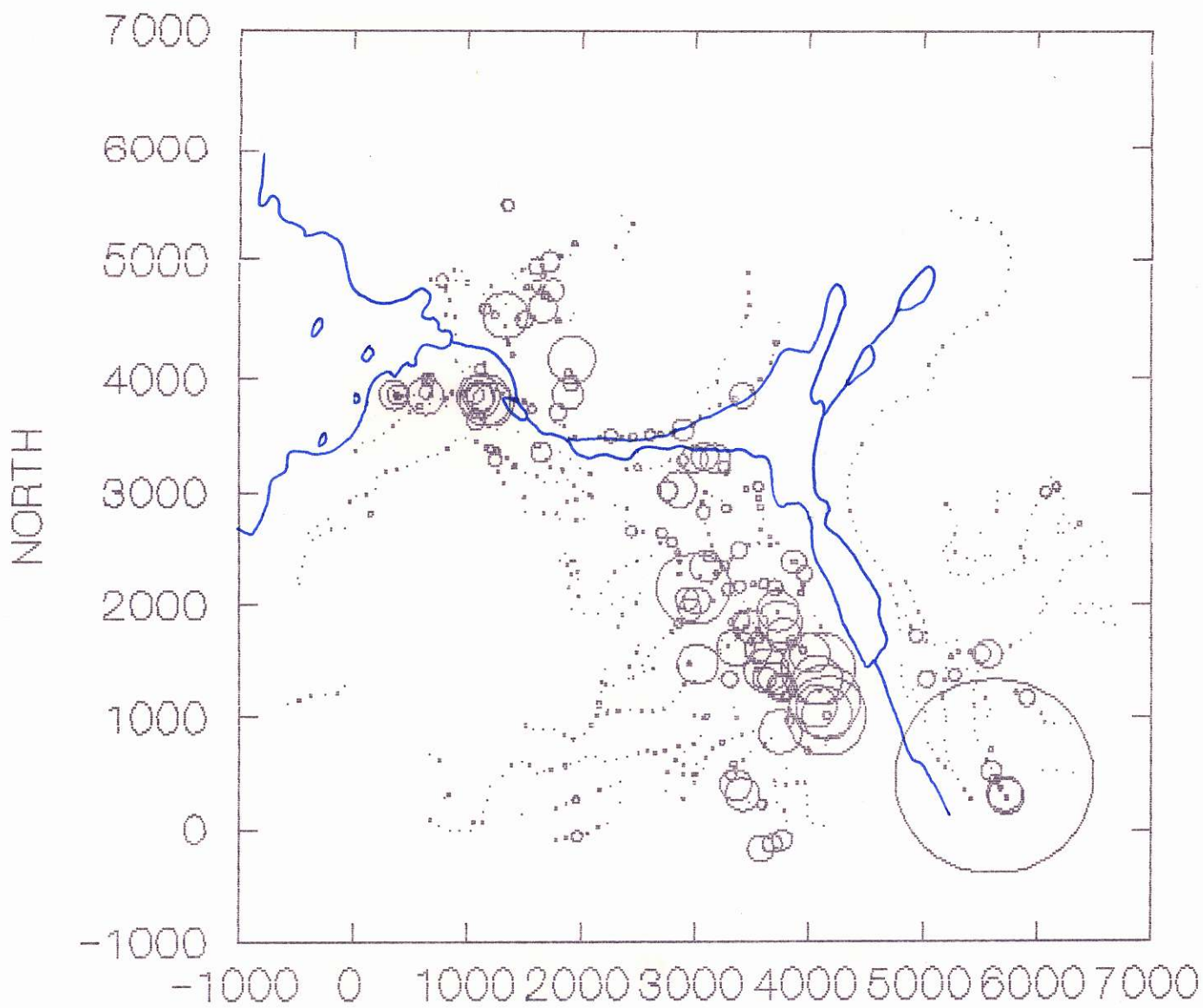


Fig. 5a Sulphur
 Size of circle proportional
 to amount of Sulphur
 largest circle = 10% S

EAST

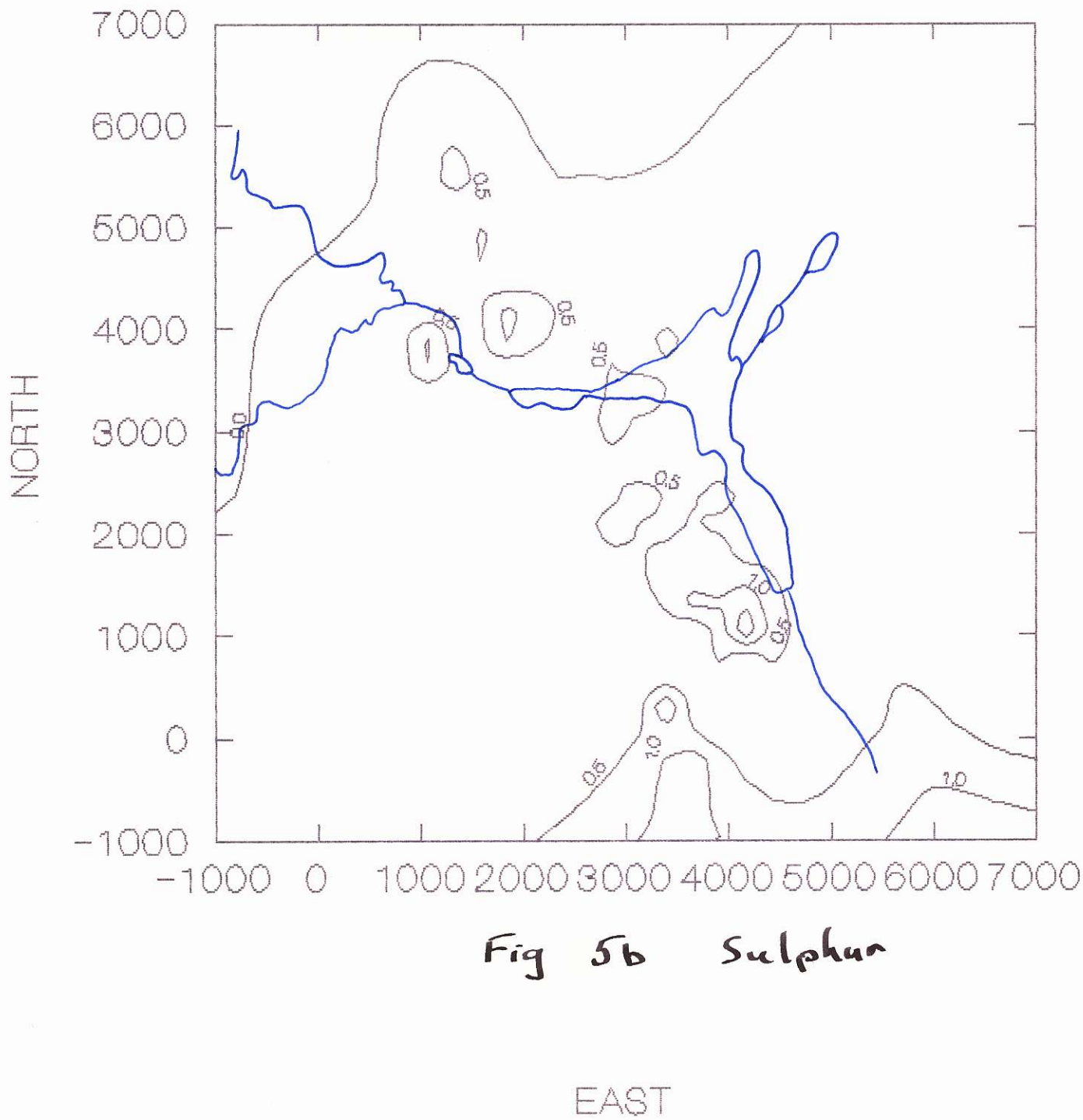


Fig 5b Sulphur

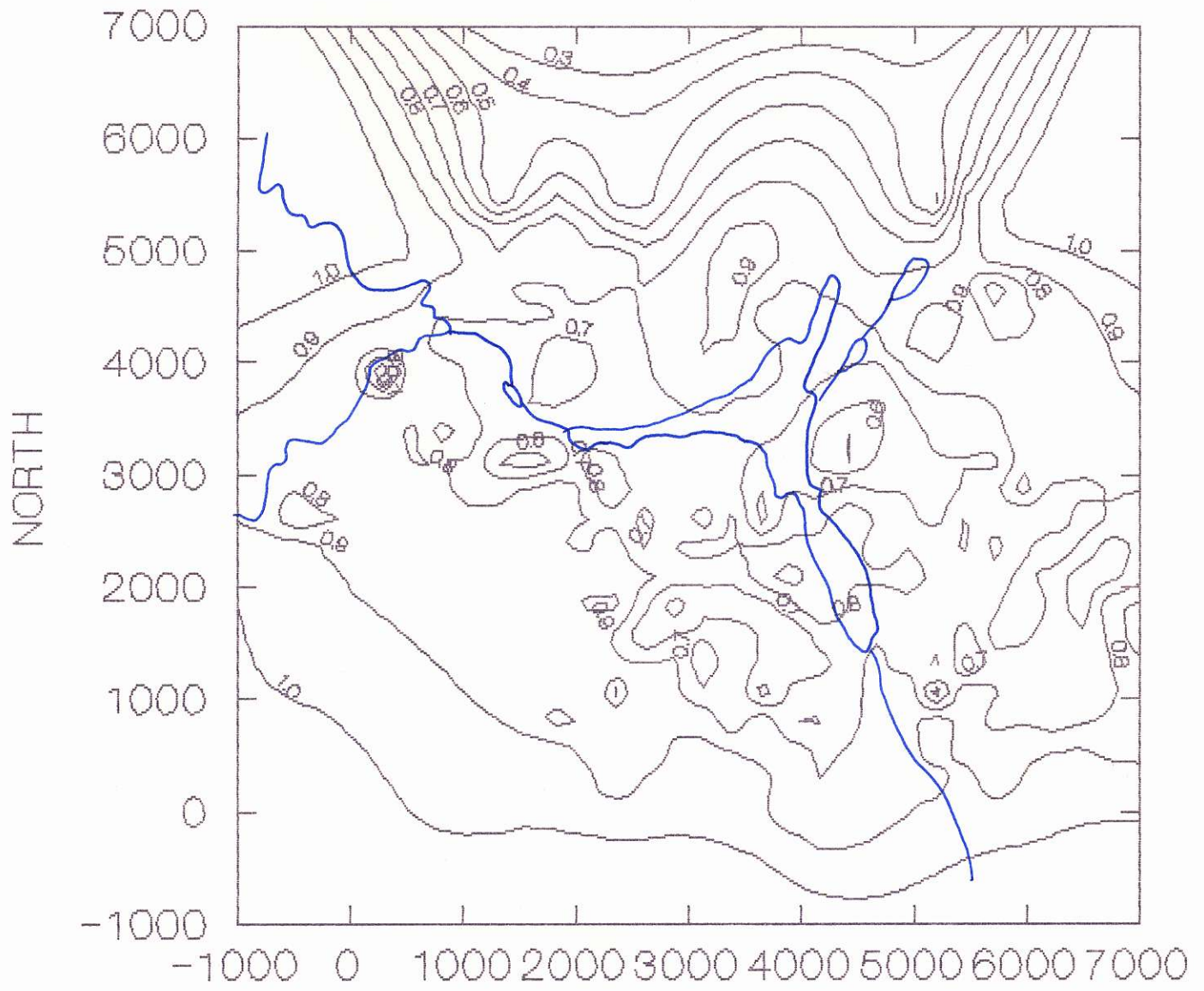


Fig. 6

$$\frac{Cu}{Cu+Pb}$$

Cu/Pb

EAST

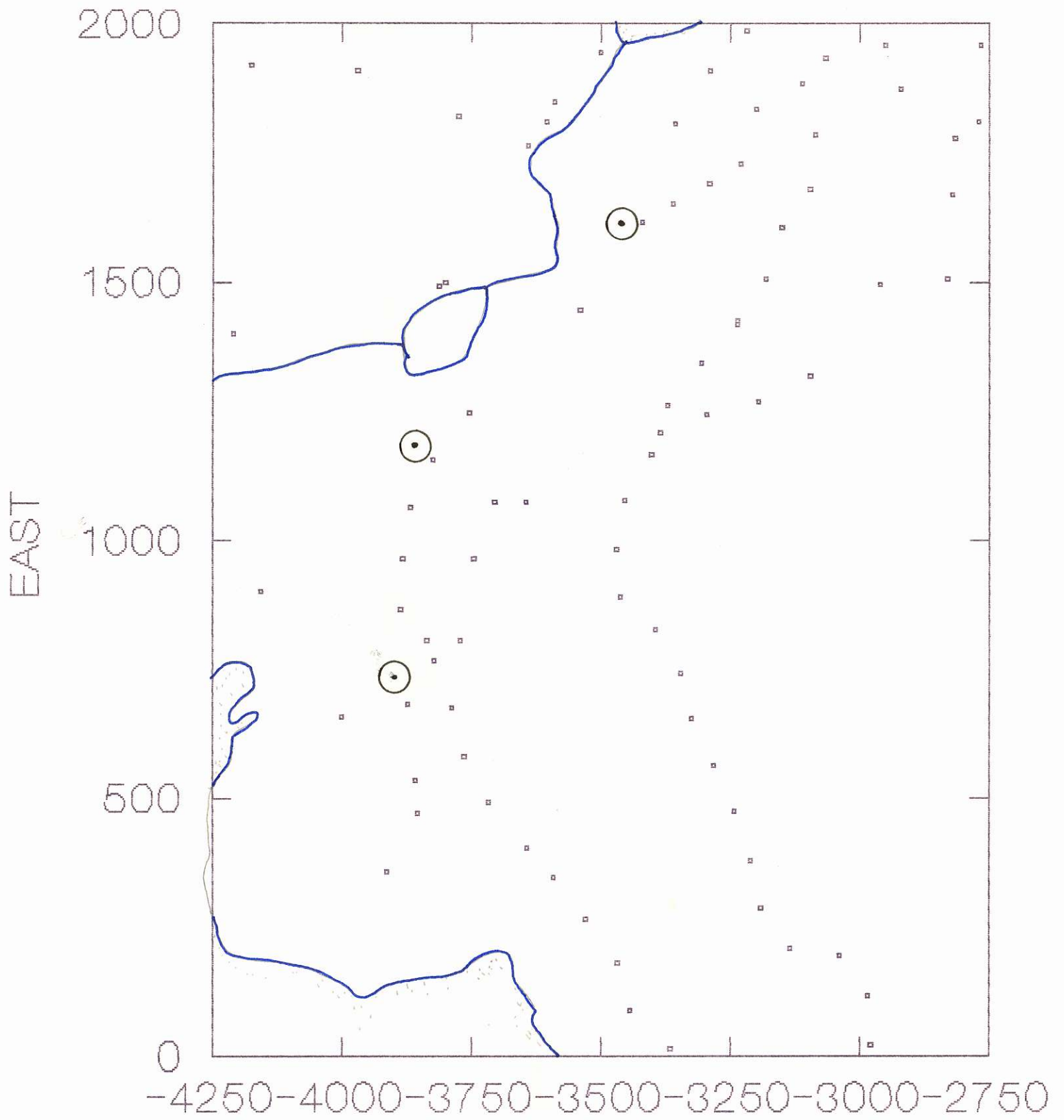


Fig. 7 Whole Rock Locations

NORTHING

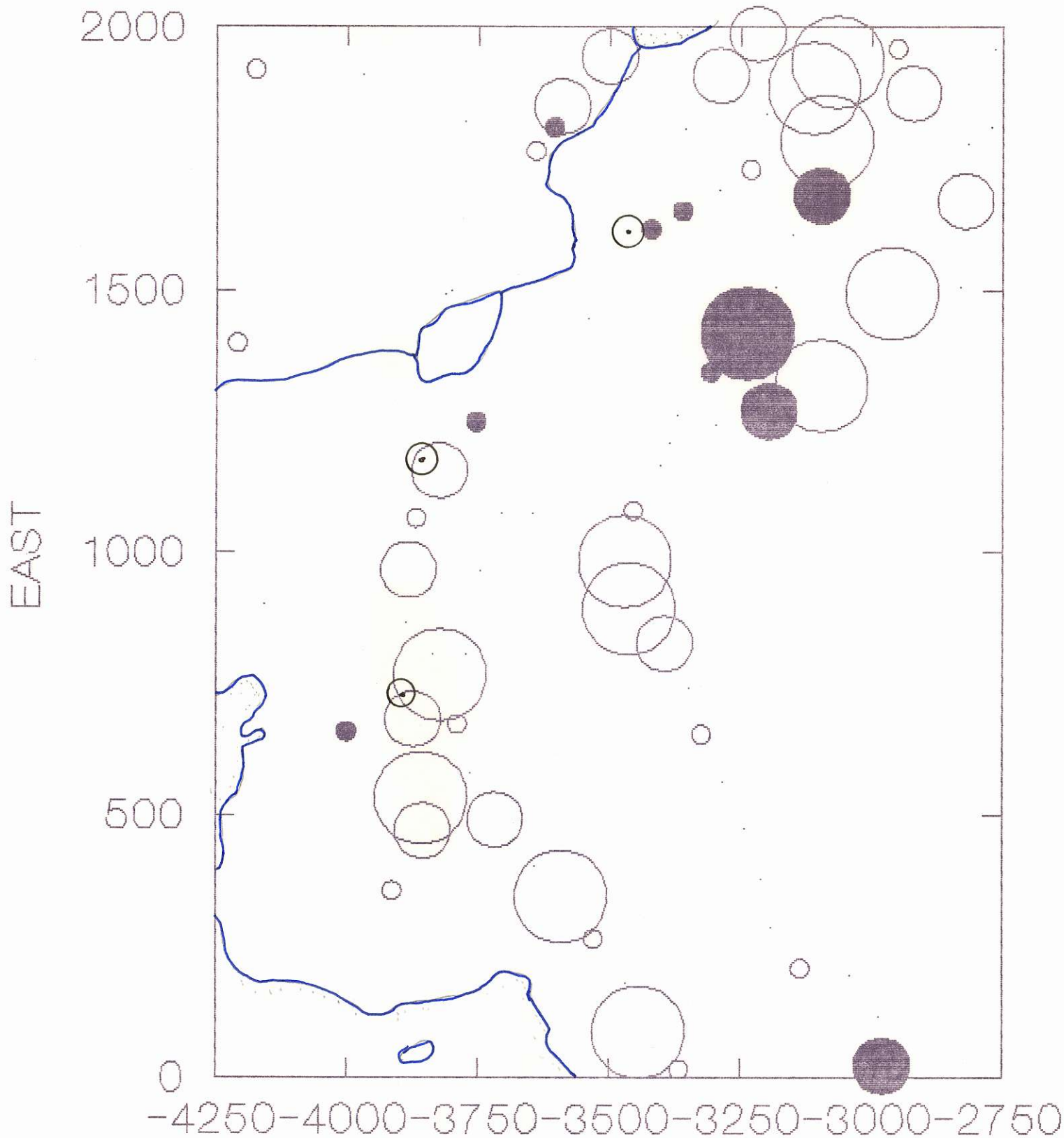


Fig. 8 K mobility
Open circles K enhancement
Closed circles K depletion

NORTHING

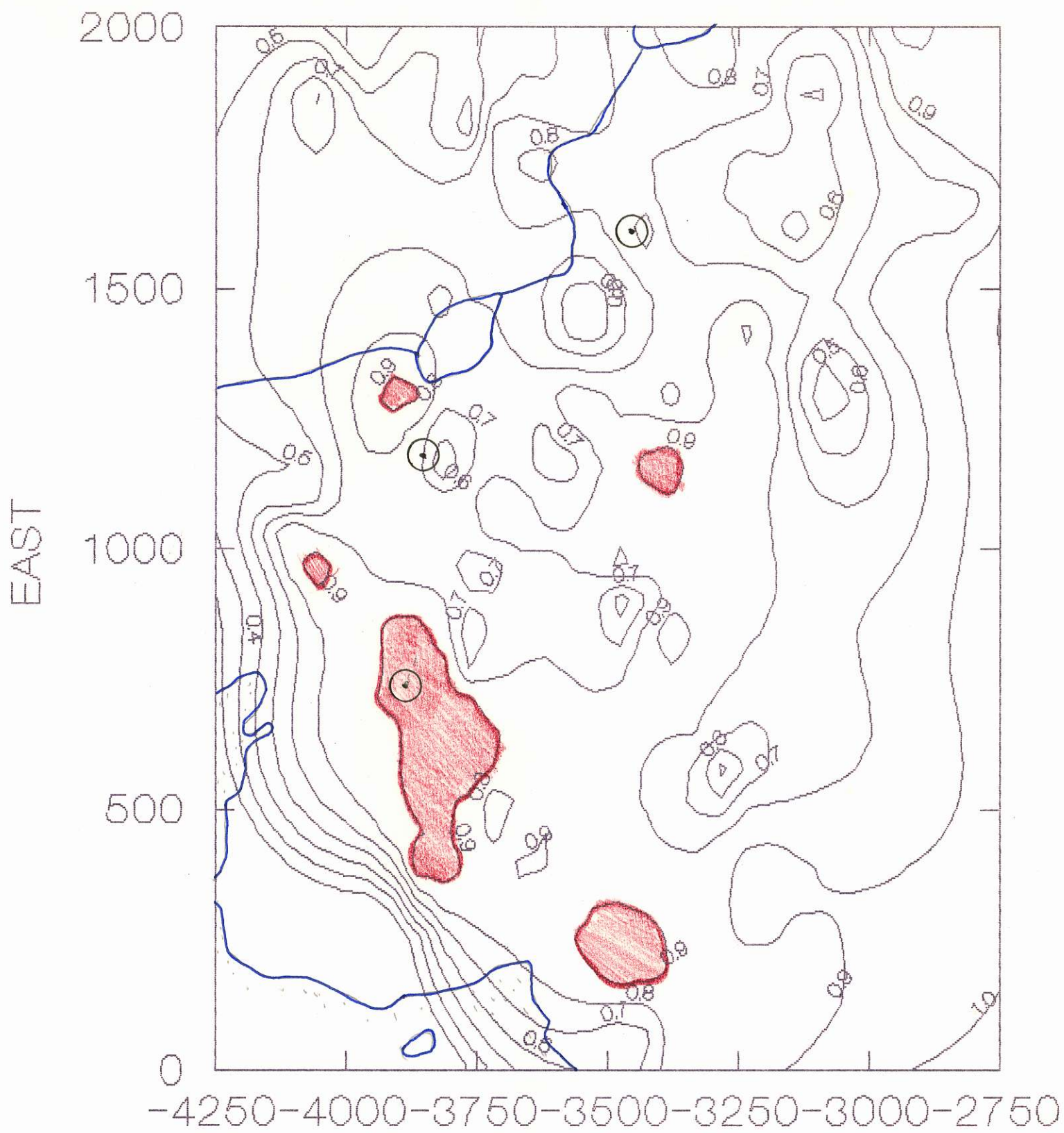


Fig. 9 $\frac{Cu}{Cu+Pb}$

NORTHING

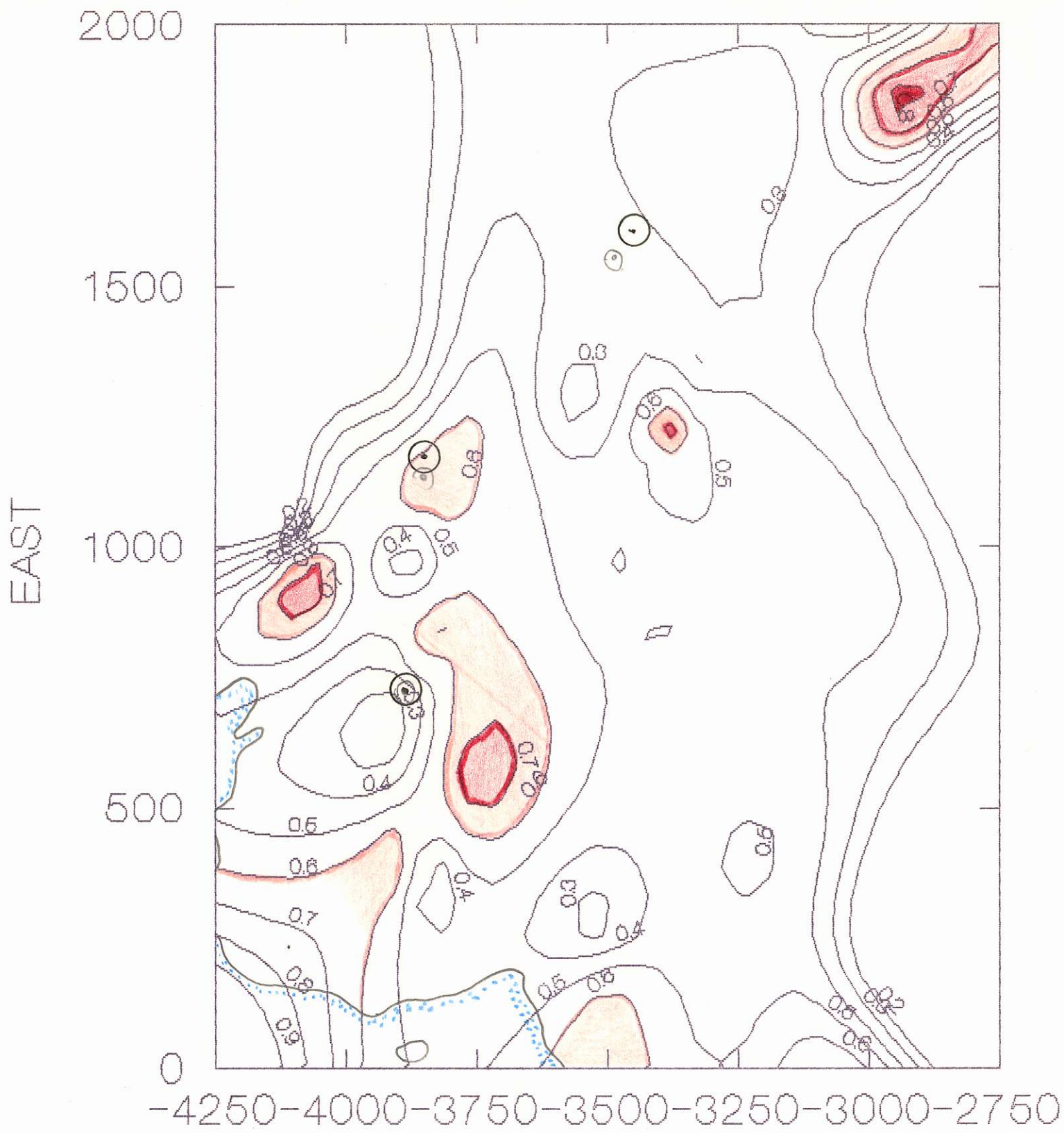
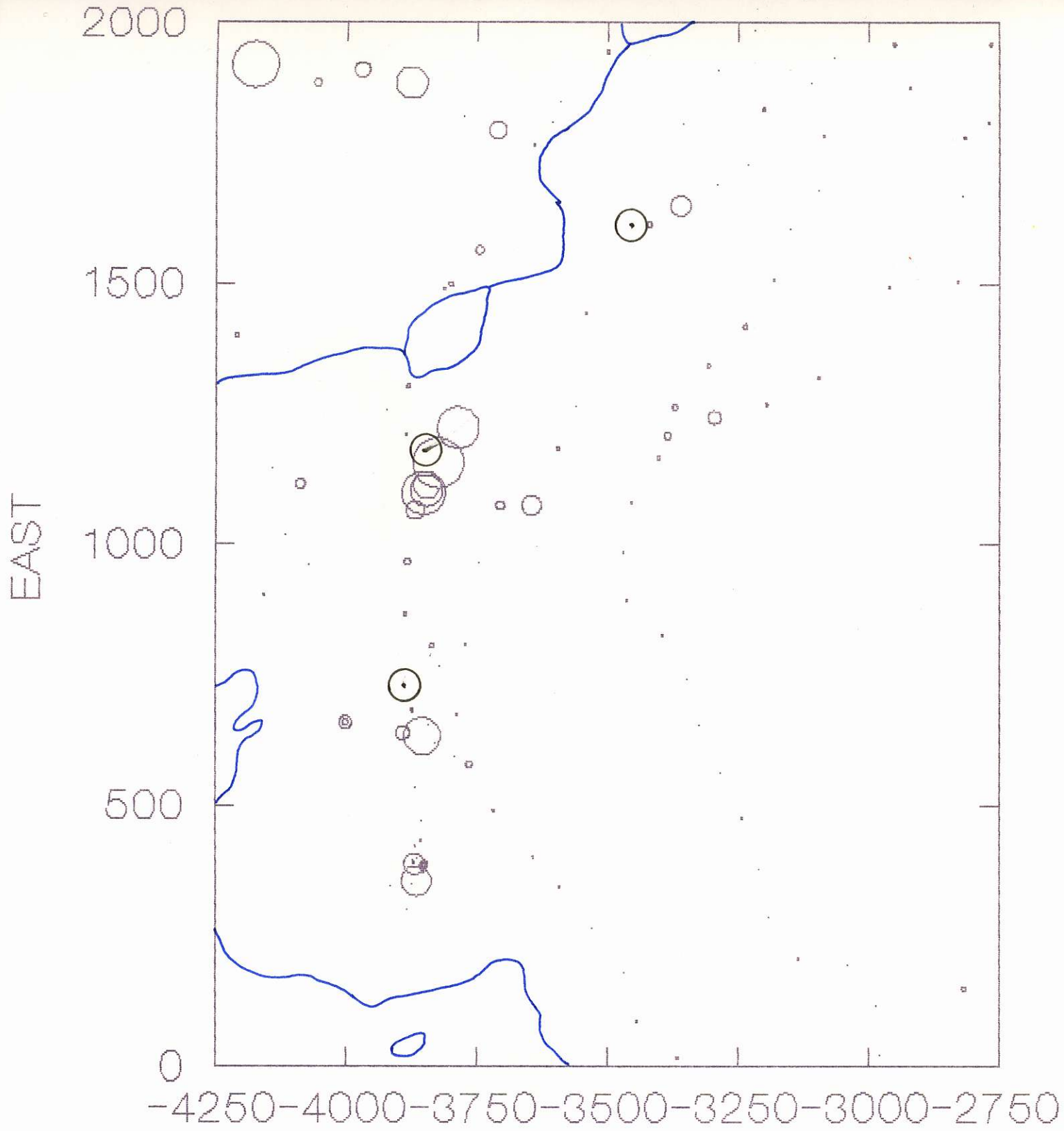


Fig. 10 $\frac{Cu}{Cu+Zn}$



Sulphur Fig. 11

NORTHING

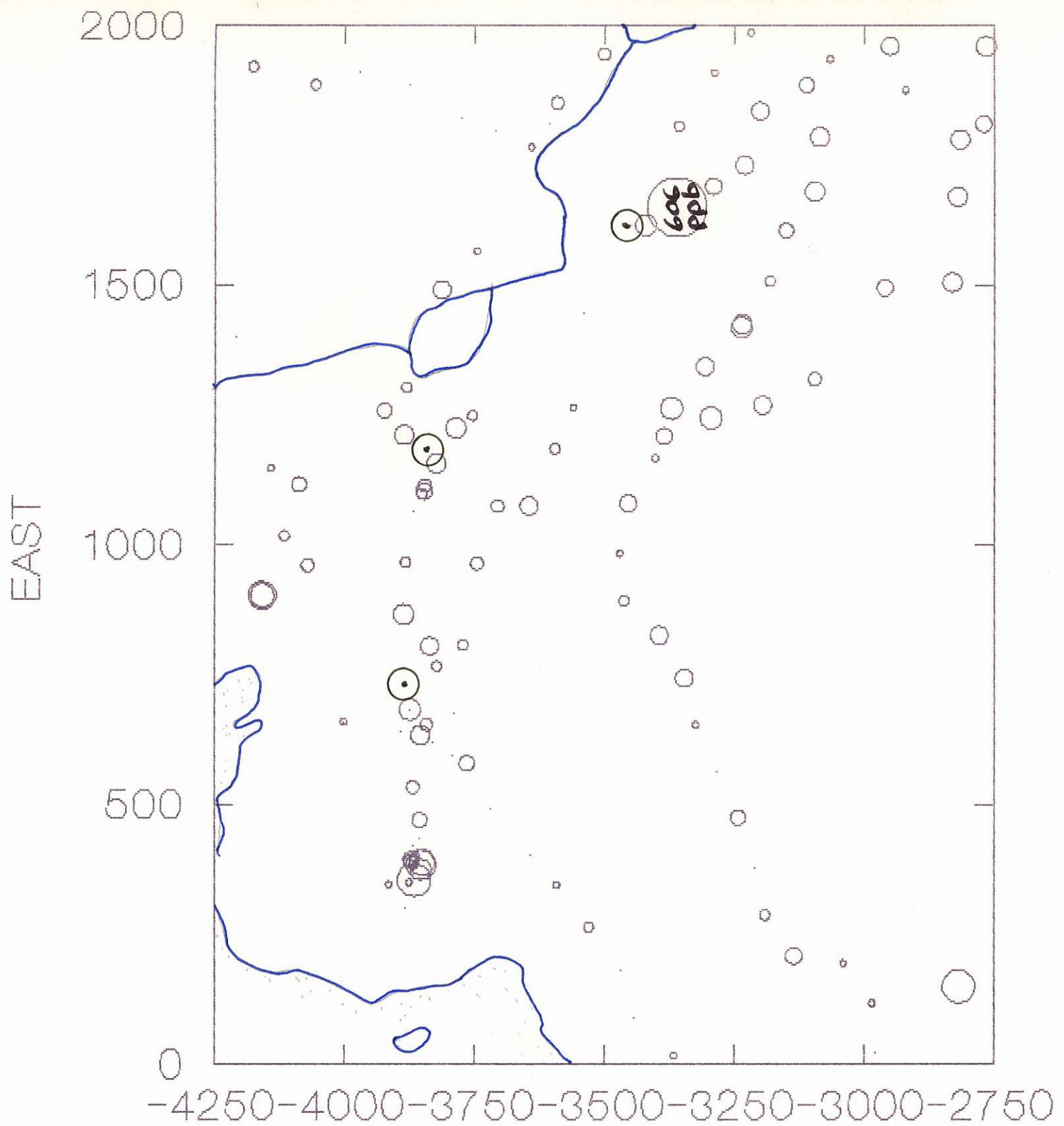


Fig. 12 $\log A_u$

NORTHING

Lemare Project

Gold - Upper Road

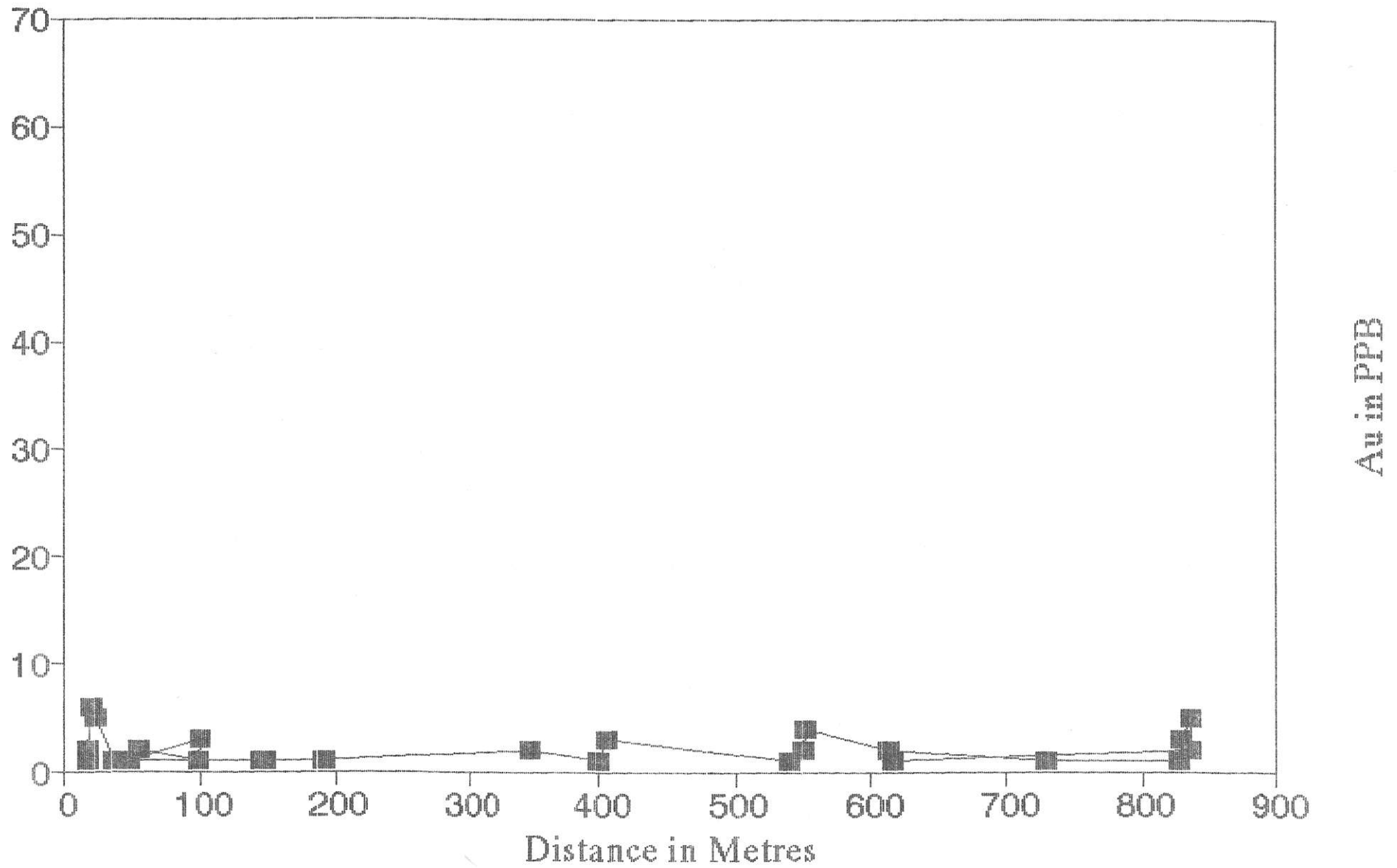
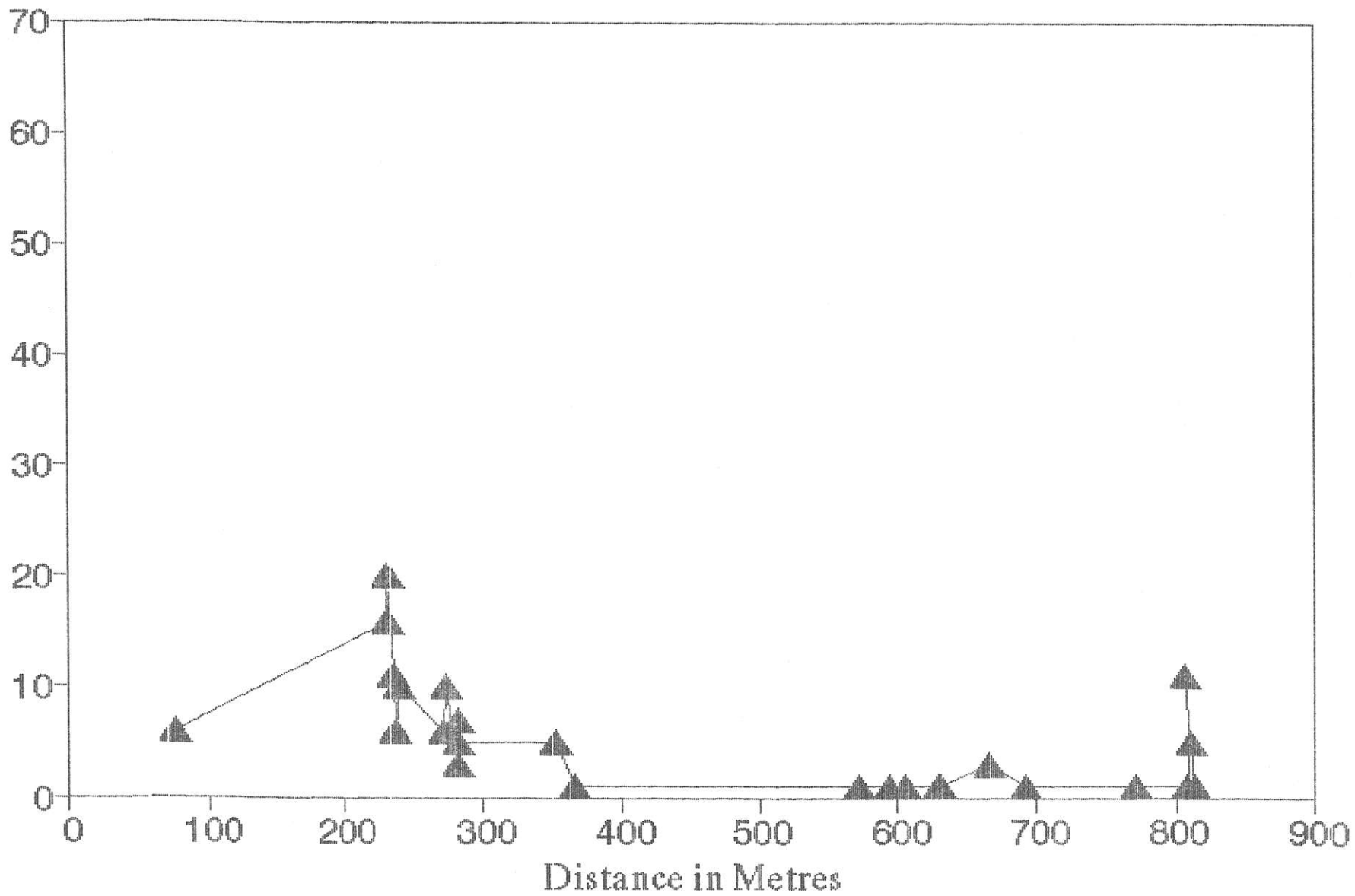


Fig. 13

Lemare Project

Gold - Middle Road



Au in PPM

Fig 14

Lemare Project

Lower Road (320) Gold

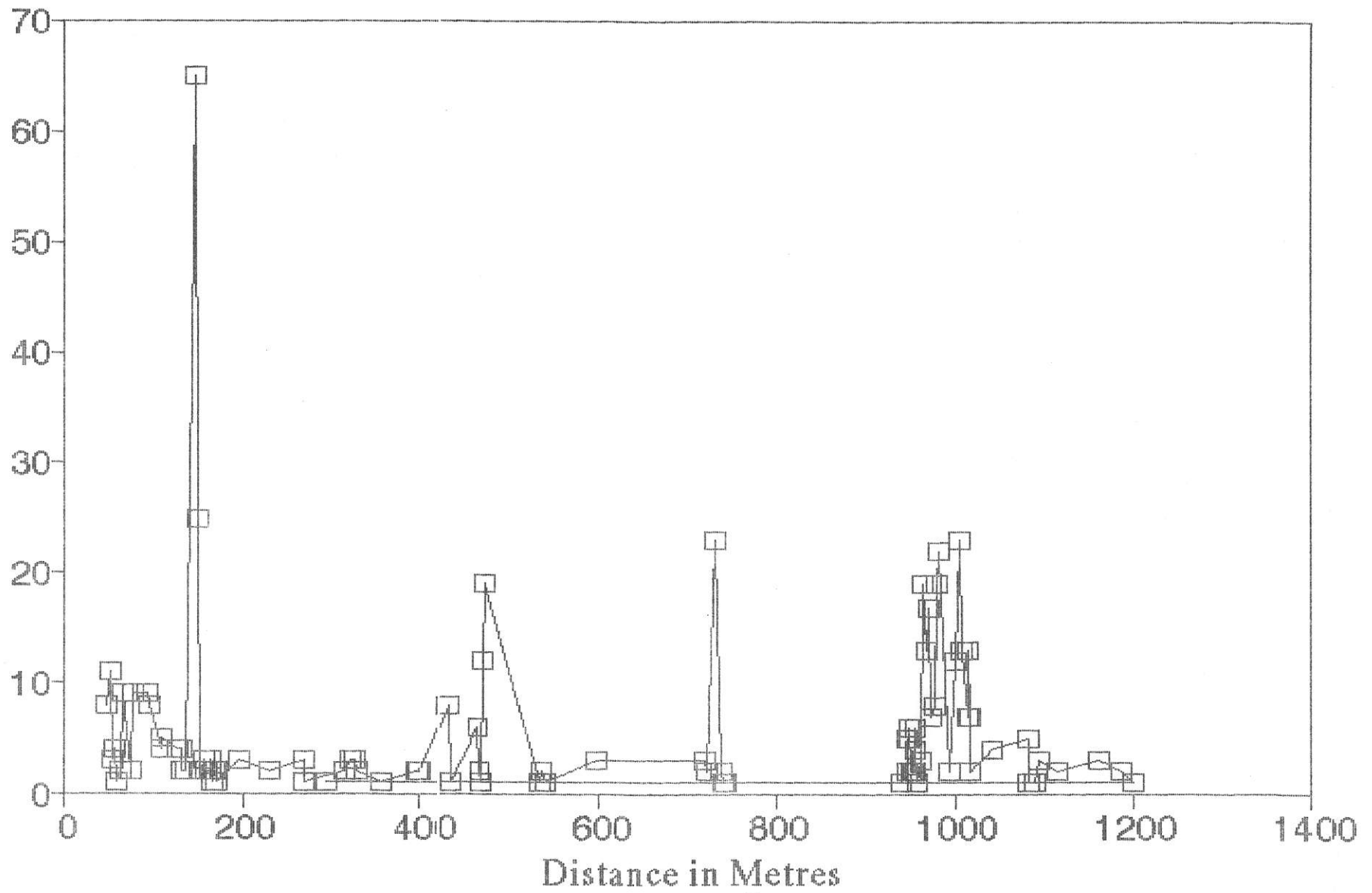


Fig. 15